

Алматы (7273)495-231
Ангарск (3955)60-70-56
Архангельск (8182)63-90-72
Астрахань (8512)99-46-04
Барнаул (3852)73-04-60
Белгород (4722)40-23-64
Благовещенск (4162)22-76-07
Брянск (4832)59-03-52
Владивосток (423)249-28-31
Владикавказ (8672)28-90-48
Владимир (4922)49-43-18
Волгоград (844)278-03-48
Вологда (8172)26-41-59
Воронеж (473)204-51-73
Екатеринбург (343)384-55-89

Иваново (4932)77-34-06
Ижевск (3412)26-03-58
Иркутск (395)279-98-46
Казань (843)206-01-48
Калининград (4012)72-03-81
Калуга (4842)92-23-67
Кемерово (3842)65-04-62
Киров (8332)68-02-04
Коломна (4966)23-41-49
Кострома (4942)77-07-48
Краснодар (861)203-40-90
Красноярск (391)204-63-61
Курск (4712)77-13-04
Курган (3522)50-90-47
Липецк (4742)52-20-81

Магнитогорск (3519)55-03-13
Москва (495)268-04-70
Мурманск (8152)59-64-93
Набережные Челны (8552)20-53-41
Нижний Новгород (831)429-08-12
Новокузнецк (3843)20-46-81
Ноябрьск (3496)41-32-12
Новосибирск (383)227-86-73
Омск (3812)21-46-40
Орел (4862)44-53-42
Оренбург (3532)37-68-04
Пенза (8412)22-31-16
Петрозаводск (8142)55-98-37
Псков (8112)59-10-37
Пермь (342)205-81-47

Ростов-на-Дону (863)308-18-15
Рязань (4912)46-61-64
Самара (846)206-03-16
Санкт-Петербург (812)309-46-40
Саратов (845)249-38-78
Севастополь (8692)22-31-93
Саранск (8342)22-96-24
Симферополь (3652)67-13-56
Смоленск (4812)29-41-54
Сочи (862)225-72-31
Ставрополь (8652)20-65-13
Сургут (3462)77-98-35
Сыктывкар (8212)25-95-17
Тамбов (4752)50-40-97
Тверь (4822)63-31-35

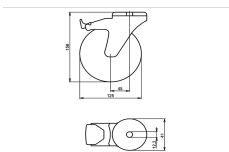
Тольятти (8482)63-91-07
Томск (3822)98-41-53
Тула (4872)33-79-87
Тюмень (3452)66-21-18
Ульяновск (8422)24-23-59
Улан-Удэ (3012)59-97-51
Уфа (347)229-48-12
Хабаровск (4212)92-98-04
Чебоксары (8352)28-53-07
Челябинск (351)202-03-61
Череповец (8202)49-02-64
Чита (3022)38-34-83
Якутск (4112)23-90-97
Ярославль (4852)69-52-93

Россия +7(495)268-04-70

Казахстан +7(7172)727-132

Киргизия +996(312)96-26-47

<https://liv.nt-rt.ru/> || vis@nt-rt.ru



Product description

institutional Swivel castor with brake with an overall height of 156 mm

Wheel diameter x width: 125 x 32 mm

Top plate with 4 mounting holes of 12,2 mm, mounting hole distance #5% mm and top plate outer dimensions: 41 mm

Wheel with ball bearing and polyethylene tread with hardness 82 ° Shore A on polypropylene

the double brake system, brakes the turning of the wheel and the swivel rotation.

Approved and tested load capacity

Dynamic 100 kg

Static 120 kg

Temperature range:

Continuous operation: -20 | +60°C

Short (10 min) exposure: -30 | +80°C

Advantages of this Graceful moving Swivel castor with brake:

- ✓ proof
- ✓ no marks on the floor
- ✓ rotation

LIV SYSTEMS institutional Swivel castor with brake + polyethylene tread Ø125 x W32mm for 100kg Prod ID: 44838

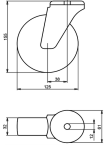
ID 44838: Castor overall height 156 mm | 4 mounting holes with distance #5% mm | Wheel with ball bearing and polyethylene tread with hardness 82 ° Shore A | The double brake system, brakes the turning of the wheel and the swivel rotation. | Graceful moving

Product information

- Article code 2-8LZ-25K
- SKU 44838
- EAN 3838461448386

Specifications

The result of our quality is maximum performance!



Product description

institutional Swivel castor with an overall height of 155 mm

Wheel diameter x width: 125 x 32 mm

Top plate with 4 mounting holes of 12 mm, mounting hole distance #\$\$ mm and top plate outer dimensions: 61 mm

Wheel with ball bearing and solid polypropylene wheel with hardness 60 ± 5 ° Shore D.

Approved and tested load capacity

Dynamic 100 kg

Static 120 kg

Temperature range:

Continuous operation: -20 | $+60$ °C

Short (10 min) exposure: #\$\$ °C

Advantages of this Sliding gently Swivel castor:

- ✓ proof
- ✓ no marks on the floor
- ✓ rotation

LIV SYSTEMS institutional Swivel castor + solid polypropylene wheel Ø125 x W32mm for 100kg Prod ID: 44809

ID 44809: Castor overall height 155 mm | 4 mounting holes with distance #\$\$ mm | Wheel with ball bearing and solid polypropylene wheel with hardness 60 ± 5 ° Shore D |

Sliding gently, dust proof, leaves no marks on the floor, ease rotation

Product information

- Article code 2-817
- SKU 44809
- EAN 3838461448096

Specifications

The result of our quality is maximum performance!



Product description

institutional Wheel with ball bearing and solid polypropylene wheel with hardness 60 ± 5 ° Shore D

Wheel diameter x width: 125 x 32 mm

Axle hole: 8,3 mm

Hub length: mm

Approved and tested load capacity

Dynamic 100 kg

Static 120 kg

Temperature range:

Continuous operation: -20 | $+60$ °C

Short (10 min) exposure: $\#\$$ °C

Advantages of this Sliding gently wheel:

- ✓ proof
- ✓ no marks on the floor
- ✓ rotation

LIV SYSTEMS institutional wheel + solid polypropylene wheel Ø125 x W32mm for 100kg Prod ID: 44804

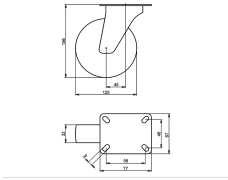
ID 44804:institutional Wheel with ball bearing and solid polypropylene wheel with hardness 60 ± 5 ° Shore D | Axle hole: 8,3 mm | Hub length: mm | Sliding gently, dust proof, leaves no marks on the floor, ease rotation

Product information

- Article code 2-817-25K
- SKU 44804
- EAN 3838461448041

Specifications

The result of our quality is maximum performance!



Product description

institutional Swivel castor with an overall height of 156 mm

Wheel diameter x width: 125 x 32 mm

Top plate with 4 mounting holes of 9 mm, mounting hole distance 56x46 mm and top plate outer dimensions: 77x67 mm

Wheel with ball bearing and polyethylene tread with hardness 82 ° Shore A on polypropylene.

Approved and tested load capacity

Dynamic 100 kg

Static 120 kg

Temperature range:

Continuous operation: -20 | +60°C

Short (10 min) exposure: -30 | +80°C

Advantages of this Graceful moving Swivel castor:

- ✓ proof
- ✓ no marks on the floor
- ✓ rotation

LIV SYSTEMS institutional Swivel castor + polyethylene tread Ø125 x W32mm for 100kg Prod ID: 44818

ID 44818: Castor overall height 156 mm | 4 mounting holes with distance 56x46 mm | Wheel with ball bearing and polyethylene tread with hardness 82 ° Shore A | Graceful moving, dust proof, leaves no marks on the floor, ease rotation

Product information

- Article code 2-8PG-25K
- SKU 44818
- EAN 3838461448188

Specifications

The result of our quality is maximum performance!



Product description

institutional Fixed castor with an overall height of 156 mm

Wheel diameter x width: 125 x 32 mm

Top plate with 4 mounting holes of 9 mm, mounting hole distance 56x46 mm and top plate outer dimensions: 77x67 mm

Wheel with ball bearing and polyethylene tread with hardness 82 ° Shore A on polypropylene.

Approved and tested load capacity

Dynamic 100 kg

Static 120 kg

Temperature range:

Continuous operation: -20 | +60°C

Short (10 min) exposure: #\$\$%°C

Advantages of this Graceful moving Fixed castor:

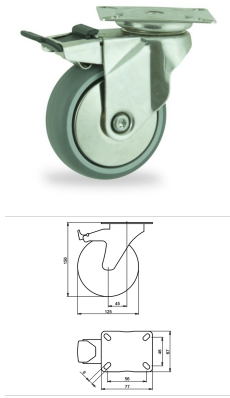
- ✓ proof
- ✓ no marks on the floor
- ✓ rotation

LIV SYSTEMS institutional Fixed castor + polyethylene tread Ø125 x W32mm for 100kg Prod ID: 44828

ID 44828: Castor overall height 156 mm | 4 mounting holes with distance 56x46 mm | Wheel with ball bearing and polyethylene tread with hardness 82 ° Shore A | Graceful moving, dust proof, leaves no marks on the floor, ease rotation

Product information

- Article code 2-8PS-25K
- SKU 44828
- EAN 3838461448287



Product description

institutional Swivel castor with brake with an overall height of 156 mm

Wheel diameter x width: 125 x 32 mm

Top plate with 4 mounting holes of 9 mm, mounting hole distance 56x46 mm and top plate outer dimensions: 77x67 mm

Wheel with ball bearing and polyethylene tread with hardness 82 ° Shore A on polypropylene

the double brake system, brakes the turning of the wheel and the swivel rotation.

Approved and tested load capacity

Dynamic 100 kg

Static 120 kg

Temperature range:

Continuous operation: -20 | +60°C

Short (10 min) exposure: -30 | +80°C

Advantages of this Graceful moving Swivel castor with brake:

- ✓ proof
- ✓ no marks on the floor
- ✓ rotation

LIV SYSTEMS institutional Swivel castor with brake + polyethylene tread Ø125 x W32mm for 100kg Prod ID: 44823

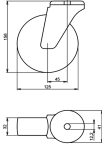
ID 44823: Castor overall height 156 mm | 4 mounting holes with distance 56x46 mm | Wheel with ball bearing and polyethylene tread with hardness 82 ° Shore A | The double brake system, brakes the turning of the wheel and the swivel rotation. | Graceful mov

Product information

- Article code 2-8PZ-25K
- SKU 44823
- EAN 3838461448232

Specifications

The result of our quality is maximum performance!



Product description

institutional Swivel castor with an overall height of 156 mm

Wheel diameter x width: 125 x 32 mm

Top plate with 4 mounting holes of 12,2 mm, mounting hole distance #\$\$ mm and top plate outer dimensions: 41 mm

Wheel with ball bearing and polyethylene tread with hardness 82 ° Shore A on polypropylene.

Approved and tested load capacity

Dynamic 100 kg

Static 120 kg

Temperature range:

Continuous operation: -20 | +60°C

Short (10 min) exposure: -30 | +80°C

Advantages of this Graceful moving Swivel castor:

- ✓ proof
- ✓ no marks on the floor
- ✓ rotation

LIV SYSTEMS institutional Swivel castor + polyethylene tread Ø125 x W32mm for 100kg Prod ID: 44833

ID 44833: Castor overall height 156 mm | 4 mounting holes with distance #\$\$ mm | Wheel with ball bearing and polyethylene tread with hardness 82 ° Shore A | Graceful moving, dust proof, leaves no marks on the floor, ease rotation

Product information

- Article code 2-8LG-25K
- SKU 44833
- EAN 3838461448331

Specifications

The result of our quality is maximum performance!

Алматы (7273)495-231
Ангарск (3955)60-70-56
Архангельск (8182)63-90-72
Астрахань (8512)99-46-04
Барнаул (3852)73-04-60
Белгород (4722)40-23-64
Благовещенск (4162)22-76-07
Брянск (4832)59-03-52
Владивосток (423)249-28-31
Владикавказ (8672)28-90-48
Владимир (4922)49-43-18
Волгоград (844)278-03-48
Вологда (8172)26-41-59
Воронеж (473)204-51-73
Екатеринбург (343)384-55-89

Иваново (4932)77-34-06
Ижевск (3412)26-03-58
Иркутск (395)279-98-46
Казань (843)206-01-48
Калининград (4012)72-03-81
Калуга (4842)92-23-67
Кемерово (3842)65-04-62
Киров (8332)68-02-04
Коломна (4966)23-41-49
Кострома (4942)77-07-48
Краснодар (861)203-40-90
Красноярск (391)204-63-61
Курск (4712)77-13-04
Курган (3522)50-90-47
Липецк (4742)52-20-81

Магнитогорск (3519)55-03-13
Москва (495)268-04-70
Мурманск (8152)59-64-93
Набережные Челны (8552)20-53-41
Нижний Новгород (831)429-08-12
Новокузнецк (3843)20-46-81
Ноябрьск (3496)41-32-12
Новосибирск (383)227-86-73
Омск (3812)21-46-40
Орел (4862)44-53-42
Оренбург (3532)37-68-04
Пенза (8412)22-31-16
Петрозаводск (8142)55-98-37
Псков (8112)59-10-37
Пермь (342)205-81-47

Ростов-на-Дону (863)308-18-15
Рязань (4912)46-61-64
Самара (846)206-03-16
Санкт-Петербург (812)309-46-40
Саратов (845)249-38-78
Севастополь (8692)22-31-93
Саранск (8342)22-96-24
Симферополь (3652)67-13-56
Смоленск (4812)29-41-54
Сочи (862)225-72-31
Ставрополь (8652)20-65-13
Сургут (3462)77-98-35
Сыктывкар (8212)25-95-17
Тамбов (4752)50-40-97
Тверь (4822)63-31-35

Тольятти (8482)63-91-07
Томск (3822)98-41-53
Тула (4872)33-79-87
Тюмень (3452)66-21-18
Ульяновск (8422)24-23-59
Улан-Удэ (3012)59-97-51
Уфа (347)229-48-12
Хабаровск (4212)92-98-04
Чебоксары (8352)28-53-07
Челябинск (351)202-03-61
Череповец (8202)49-02-64
Чита (3022)38-34-83
Якутск (4112)23-90-97
Ярославль (4852)69-52-93

Россия +7(495)268-04-70

Казахстан +7(7172)727-132

Киргизия +996(312)96-26-47

<https://liv.nt-rt.ru/> || vis@nt-rt.ru