

Алматы (7273)495-231  
Ангарск (3955)60-70-56  
Архангельск (8182)63-90-72  
Астрахань (8512)99-46-04  
Барнаул (3852)73-04-60  
Белгород (4722)40-23-64  
Благовещенск (4162)22-76-07  
Брянск (4832)59-03-52  
Владивосток (423)249-28-31  
Владикавказ (8672)28-90-48  
Владимир (4922)49-43-18  
Волгоград (844)278-03-48  
Вологда (8172)26-41-59  
Воронеж (473)204-51-73  
Екатеринбург (343)384-55-89

Иваново (4932)77-34-06  
Ижевск (3412)26-03-58  
Иркутск (395)279-98-46  
Казань (843)206-01-48  
Калининград (4012)72-03-81  
Калуга (4842)92-23-67  
Кемерово (3842)65-04-62  
Киров (8332)68-02-04  
Коломна (4966)23-41-49  
Кострома (4942)77-07-48  
Краснодар (861)203-40-90  
Красноярск (391)204-63-61  
Курск (4712)77-13-04  
Курган (3522)50-90-47  
Липецк (4742)52-20-81

Магнитогорск (3519)55-03-13  
Москва (495)268-04-70  
Ижевск (3412)26-03-58  
Мурманск (8152)59-64-93  
Набережные Челны (8552)20-53-41  
Нижний Новгород (831)429-08-12  
Новокузнецк (3843)20-46-81  
Ноябрьск (3496)41-32-12  
Новосибирск (383)227-86-73  
Омск (3812)21-46-40  
Орел (4862)44-53-42  
Оренбург (3532)37-68-04  
Пенза (8412)22-31-16  
Петрозаводск (8142)55-98-37  
Псков (8112)59-10-37  
Пермь (342)205-81-47

Ростов-на-Дону (863)308-18-15  
Рязань (4912)46-61-64  
Самара (846)206-03-16  
Санкт-Петербург (812)309-46-40  
Саратов (845)249-38-78  
Севастополь (8692)22-31-93  
Саранск (8342)22-96-24  
Симферополь (3652)67-13-56  
Смоленск (4812)29-41-54  
Сочи (862)225-72-31  
Ставрополь (8652)20-65-13  
Сургут (3462)77-98-35  
Сыктывкар (8212)25-95-17  
Тамбов (4752)50-40-97  
Тверь (4822)63-31-35

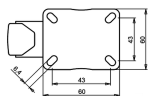
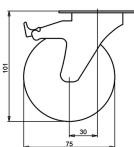
Тольятти (8482)63-91-07  
Томск (3822)98-41-53  
Тула (4872)33-79-87  
Тюмень (3452)66-21-18  
Ульяновск (8422)24-23-59  
Улан-Удэ (3012)59-97-51  
Уфа (347)229-48-12  
Хабаровск (4212)92-98-04  
Чебоксары (8352)28-53-07  
Челябинск (351)202-03-61  
Череповец (8202)49-02-64  
Чита (3022)38-34-83  
Якутск (4112)23-90-97  
Ярославль (4852)69-52-93

Россия +7(495)268-04-70

Казахстан +7(7172)727-132

Киргизия +996(312)96-26-47

<https://liv.nt-rt.ru/> || [vis@nt-rt.ru](mailto:vis@nt-rt.ru)



## institutional Swivel castor with brake + polyethylene tread Ø75 x W24mm for 60kg Prod ID: 44820

institutional Swivel castor with brake with an overall height of 101 mm

Wheel diameter x width: 75 x 24 mm

Top plate with 4 mounting holes of 6,4 mm, mounting hole distance 43x43 mm and top plate outer dimensions: 60x60 mm

Wheel with ball bearing and polyethylene tread with hardness 82 ° Shore A on polypropylene the double brake system, brakes the turning of the wheel and the swivel rotation.

### Approved and tested load capacity

Dynamic 60 kg

Static 70 kg

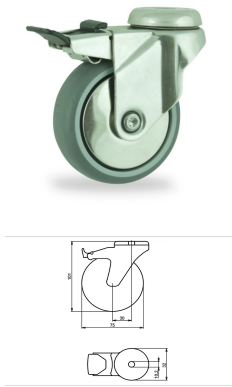
### Temperature range:

Continuous operation: -20 | +60°C

Short (10 min) exposure: -30 | +80°C

### Advantages of this Graceful moving Swivel castor with brake:

- ✓ proof
- ✓ no marks on the floor
- ✓ rotation



## Product description

institutional Swivel castor with brake with an overall height of 101 mm

Wheel diameter x width: 75 x 24 mm

Top plate with 4 mounting holes of 10,2 mm, mounting hole distance #\$\$ mm and top plate outer dimensions: 32 mm

Wheel with ball bearing and polyethylene tread with hardness 82 ° Shore A on polypropylene

the double brake system, brakes the turning of the wheel and the swivel rotation.

### Approved and tested load capacity

Dynamic 60 kg

Static 70 kg

### Temperature range:

Continuous operation: -20 | +60°C

Short (10 min) exposure: -30 | +80°C

### Advantages of this Graceful moving Swivel castor with brake:

- ✓ proof
- ✓ no marks on the floor
- ✓ rotation

## LIV SYSTEMS institutional Swivel castor with brake + polyethylene tread Ø75 x W24mm for 60kg Prod ID: 44835

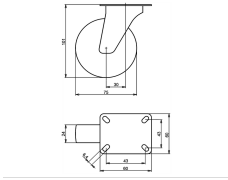
ID 44835: Castor overall height 101 mm | 4 mounting holes with distance #\$\$ mm | Wheel with ball bearing and polyethylene tread with hardness 82 ° Shore A | The double brake system, brakes the turning of the wheel and the swivel rotation. | Graceful movin

## Product information

- Article code 2-7LZ-15K
- SKU 44835
- EAN 3838461448355

## Specifications

The result of our quality is maximum performance!



## Product description

institutional Swivel castor with an overall height of 101 mm

Wheel diameter x width: 75 x 24 mm

Top plate with 4 mounting holes of 6,4 mm, mounting hole distance 43x43 mm and top plate outer dimensions: 60x60 mm

Wheel with ball bearing and polyethylene tread with hardness 82 ° Shore A on polypropylene.

### Approved and tested load capacity

Dynamic 60 kg

Static 70 kg

### Temperature range:

Continuous operation: -20 | +60°C

Short (10 min) exposure: -30 | +80°C

### Advantages of this Graceful moving Swivel castor:

- ✓ proof
- ✓ no marks on the floor
- ✓ rotation

## LIV SYSTEMS institutional Swivel castor + polyethylene tread Ø75 x W24mm for 60kg Prod ID: 44815

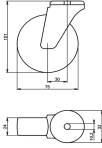
ID 44815: Castor overall height 101 mm | 4 mounting holes with distance 43x43 mm | Wheel with ball bearing and polyethylene tread with hardness 82 ° Shore A | Graceful moving, dust proof, leaves no marks on the floor, ease rotation

## Product information

- Article code 2-7PG-15K
- SKU 44815
- EAN 3838461448157

## Specifications

The result of our quality is maximum performance!



## Product description

institutional Swivel castor with an overall height of 101 mm

Wheel diameter x width: 75 x 24 mm

Top plate with 4 mounting holes of 10,2 mm, mounting hole distance #\$\$ mm and top plate outer dimensions: 32 mm

Wheel with ball bearing and polyethylene tread with hardness 82 ° Shore A on polypropylene.

### Approved and tested load capacity

Dynamic 60 kg

Static 70 kg

### Temperature range:

Continuous operation: -20 | +60°C

Short (10 min) exposure: -30 | +80°C

### Advantages of this Graceful moving Swivel castor:

- ✓ proof
- ✓ no marks on the floor
- ✓ rotation

## LIV SYSTEMS institutional Swivel castor + polyethylene tread Ø75 x W24mm for 60kg Prod ID: 44830

ID 44830: Castor overall height 101 mm | 4 mounting holes with distance #\$\$ mm | Wheel with ball bearing and polyethylene tread with hardness 82 ° Shore A | Graceful moving, dust proof, leaves no marks on the floor, ease rotation

## Product information

- Article code 2-7LG-15K
- SKU 44830
- EAN 3838461448300

## Specifications

The result of our quality is maximum performance!



## Product description

institutional Fixed castor with an overall height of 101 mm

Wheel diameter x width: 75 x 24 mm

Top plate with 4 mounting holes of 6,4 mm, mounting hole distance 43x43 mm and top plate outer dimensions: 60x60 mm

Wheel with ball bearing and polyethylene tread with hardness 82 ° Shore A on polypropylene.

### Approved and tested load capacity

Dynamic 60 kg

Static 70 kg

### Temperature range:

Continuous operation: -20 | +60°C

Short (10 min) exposure: -30 | +80°C

### Advantages of this Graceful moving Fixed castor:

- ✓ proof
- ✓ no marks on the floor
- ✓ rotation

## LIV SYSTEMS institutional Fixed castor + polyethylene tread Ø75 x W24mm for 60kg Prod ID: 44825

ID 44825: Castor overall height 101 mm | 4 mounting holes with distance 43x43 mm | Wheel with ball bearing and polyethylene tread with hardness 82 ° Shore A | Graceful moving, dust proof, leaves no marks on the floor, ease rotation

## Product information

- Article code 2-7PS-15K
- SKU 44825
- EAN 3838461448256

Алматы (7273)495-231  
Ангарск (3955)60-70-56  
Архангельск (8182)63-90-72  
Астрахань (8512)99-46-04  
Барнаул (3852)73-04-60  
Белгород (4722)40-23-64  
Благовещенск (4162)22-76-07  
Брянск (4832)59-03-52  
Владивосток (423)249-28-31  
Владикавказ (8672)28-90-48  
Владимир (4922)49-43-18  
Волгоград (844)278-03-48  
Вологда (8172)26-41-59  
Воронеж (473)204-51-73  
Екатеринбург (343)384-55-89

Иваново (4932)77-34-06  
Ижевск (3412)26-03-58  
Иркутск (395)279-98-46  
Казань (843)206-01-48  
Калининград (4012)72-03-81  
Калуга (4842)92-23-67  
Кемерово (3842)65-04-62  
Киров (8332)68-02-04  
Коломна (4966)23-41-49  
Кострома (4942)77-07-48  
Краснодар (861)203-40-90  
Красноярск (391)204-63-61  
Курск (4712)77-13-04  
Курган (3522)50-90-47  
Липецк (4742)52-20-81

Магнитогорск (3519)55-03-13  
Москва (495)268-04-70  
Мурманск (8152)59-64-93  
Набережные Челны (8552)20-53-41  
Нижний Новгород (831)429-08-12  
Новокузнецк (3843)20-46-81  
Ноябрьск (3496)41-32-12  
Новосибирск (383)227-86-73  
Омск (3812)21-46-40  
Орел (4862)44-53-42  
Оренбург (3532)37-68-04  
Пенза (8412)22-31-16  
Петрозаводск (8142)55-98-37  
Псков (8112)59-10-37  
Пермь (342)205-81-47

Ростов-на-Дону (863)308-18-15  
Рязань (4912)46-61-64  
Самара (846)206-03-16  
Санкт-Петербург (812)309-46-40  
Саратов (845)249-38-78  
Севастополь (8692)22-31-93  
Саранск (8342)22-96-24  
Симферополь (3652)67-13-56  
Смоленск (4812)29-41-54  
Сочи (862)225-72-31  
Ставрополь (8652)20-65-13  
Сургут (3462)77-98-35  
Сыктывкар (8212)25-95-17  
Тамбов (4752)50-40-97  
Тверь (4822)63-31-35

Тольятти (8482)63-91-07  
Томск (3822)98-41-53  
Тула (4872)33-79-87  
Тюмень (3452)66-21-18  
Ульяновск (8422)24-23-59  
Улан-Удэ (3012)59-97-51  
Уфа (347)229-48-12  
Хабаровск (4212)92-98-04  
Чебоксары (8352)28-53-07  
Челябинск (351)202-03-61  
Череповец (8202)49-02-64  
Чита (3022)38-34-83  
Якутск (4112)23-90-97  
Ярославль (4852)69-52-93

Россия +7(495)268-04-70

Казахстан +7(7172)727-132

Киргизия +996(312)96-26-47