

## Product description

heavy duty Wheel with ball bearing and injection-moulded polyurethane tread with hardness 92 ° Shore A on aluminium

Wheel diameter x width: 125 x 40 mm

Axle hole: 12 mm

Hub length: 44 mm

### Approved and tested load capacity

Dynamic 300 kg

Static 370 kg

### Temperature range:

Continuous operation: -25 | -55°C

Short (10 min) exposure: -40 | +55°C

### Advantages of this Indestructable footing wheel:

- ✓ burden transport
- ✓ resistance
- ✓ own weight

## LIV SYSTEMS heavy duty wheel + injection-moulded polyurethane tread Ø125 x W40mm for 300kg Prod ID: 42345

ID 42345: heavy duty Wheel with ball bearing and injection-moulded polyurethane tread with hardness 92 ° Shore A on aluminium | Axle hole: 12 mm | Hub length: 44 mm | Indestructable footing, effortless burden transport, chemical resistance, low own weight

## Product information

- Article code 2-120-25K
- SKU 42345
- EAN 3838461423451

Алматы (7273)495-231  
Ангарск (3955)60-70-56  
Архангельск (8182)63-90-72  
Астрахань (8512)99-46-04  
Барнаул (3852)73-04-60  
Белгород (4722)40-23-64  
Благовещенск (4162)22-76-07  
Брянск (4832)59-03-52  
Владивосток (423)249-28-31  
Владикавказ (8672)28-90-48  
Владимир (4922)49-43-18  
Волгоград (844)278-03-48  
Вологда (8172)26-41-59  
Воронеж (473)204-51-73  
Екатеринбург (343)384-55-89

Иваново (4932)77-34-06  
Ижевск (3412)26-03-58  
Иркутск (395)279-98-46  
Казань (843)206-01-48  
Калининград (4012)72-03-81  
Калуга (4842)92-23-67  
Кемерово (3842)65-04-62  
Киров (8332)68-02-04  
Копонна (4966)23-41-49  
Кострома (4942)77-07-48  
Краснодар (861)203-40-90  
Красноярск (391)204-63-61  
Курск (4712)77-13-04  
Курган (3522)50-90-47  
Липецк (4742)52-20-81

Магнитогорск (3519)55-03-13  
Москва (495)268-04-70  
Мурманск (8152)59-64-93  
Набережные Челны (8552)20-53-41  
Нижний Новгород (831)429-08-12  
Новокузнецк (3843)20-46-81  
Ноябрьск (3496)41-32-12  
Новосибирск (383)227-86-73  
Омск (3812)21-46-40  
Орел (4862)44-53-42  
Оренбург (3532)37-68-04  
Пенза (8412)22-31-16  
Петрозаводск (8142)55-98-37  
Псков (8112)59-10-37  
Пермь (342)205-81-47

Ростов-на-Дону (863)308-18-15  
Рязань (4912)46-61-64  
Самара (846)206-03-16  
Санкт-Петербург (812)309-46-40  
Саратов (845)249-38-78  
Севастополь (8692)22-31-93  
Саранск (8342)22-96-24  
Симферополь (3652)67-13-56  
Смоленск (4812)29-41-54  
Сочи (862)225-72-31  
Ставрополь (8652)20-65-13  
Сургут (3462)77-98-35  
Сыктывкар (8212)25-95-17  
Тамбов (4752)50-40-97  
Тверь (4822)63-31-35

Тольятти (8482)63-91-07  
Томск (3822)98-41-53  
Тула (4872)33-79-87  
Тюмень (3452)66-21-18  
Ульяновск (8422)24-23-59  
Улан-Удэ (3012)59-97-51  
Уфа (347)229-48-12  
Хабаровск (4212)92-98-04  
Чебоксары (8352)28-53-07  
Челябинск (351)202-03-61  
Череповец (8202)49-02-64  
Чита (3022)38-34-83  
Якутск (4112)23-90-97  
Ярославль (4852)69-52-93

Россия +7(495)268-04-70

Казахстан +7(7172)727-132

Киргизия +996(312)96-26-47

<https://liv.nt-rt.ru/> || [vis@nt-rt.ru](https://vis@nt-rt.ru)



## Product description

standard Swivel castor with an overall height of 155 mm

Wheel diameter x width: 125 x 35 mm

Top plate with 4 mounting holes of 9 mm, mounting hole distance 80x60 mm and top plate outer dimensions: 105x85 mm

Wheel with roller bearing and elastic rubber tyre with hardness 70 ° Shore A on polyamide.

### Approved and tested load capacity

Dynamic 200 kg

Static 250 kg

### Temperature range:

Continuous operation: -25 | +80°C

Short (10 min) exposure: -30 | +110°C

### Advantages of this silent floor motion Swivel castor:

- ✓ rolling resistance
- ✓ to surface
- ✓ barrier passing

## LIV SYSTEMS standard Swivel castor + elastic rubber tyre Ø125 x W35mm for 200kg Prod ID: 41025

ID 41025: Castor overall height 155 mm | 4 mounting holes with distance 80x60 mm | Wheel with roller bearing and elastic rubber tyre with hardness 70 ° Shore A | silent floor motion, low rolling resistance, delicate to surface, effortless barrier passing

## Product information

- Article code 2-072-25V
- SKU 41025
- EAN 3838461410253



## Product description

standard Swivel castor with brake with an overall height of 155 mm

Wheel diameter x width: 125 x 35 mm

Top plate with 4 mounting holes of 12,5 mm, mounting hole distance #\$\$% mm and top plate outer dimensions: 70 mm

Wheel with ball bearing and elastic rubber tyre with hardness 70 ° Shore A on polyamide  
the double brake system, brakes the turning of the wheel and the swivel rotation.

### Approved and tested load capacity

Dynamic 200 kg

Static 250 kg

### Temperature range:

Continuous operation: -25 | +80°C

Short (10 min) exposure: -30 | +110°C

### Advantages of this silent floor motion Swivel castor with brake:

- ✓ rolling resistance
- ✓ to surface
- ✓ barrier passing

## LIV SYSTEMS standard Swivel castor with brake + elastic rubber tyre Ø125 x W35mm for 200kg Prod ID: 41084

ID 41084: Castor overall height 155 mm | 4 mounting holes with distance #\$\$% mm | Wheel with ball bearing and elastic rubber tyre with hardness 70 ° Shore A | The double brake system, brakes the turning of the wheel and the swivel rotation. | silent floor

## Product information

- 
- Article code 2-075-25K
  - SKU 41084
  - EAN 3838461410840



## Product description

heavy duty Fixed castor with an overall height of 155 mm

Wheel diameter x width: 125 x 40 mm

Top plate with 4 mounting holes of 9 mm, mounting hole distance 80x60 mm and top plate outer dimensions: 105x85 mm

Wheel with ball bearing and injection-moulded polyurethane tread with hardness 92 ° Shore A on aluminium.

### Approved and tested load capacity

Dynamic 300 kg

Static 370 kg

### Temperature range:

Continuous operation: -25 | -55°C

Short (10 min) exposure: -40 | +55°C

### Advantages of this Indestructable footing Fixed castor:

- ✓ burden transport
- ✓ resistance
- ✓ own weight

## LIV SYSTEMS heavy duty Fixed castor + injection-moulded polyurethane tread Ø125 x W40mm for 300kg Prod ID: 42384

ID 42384: Castor overall height 155 mm | 4 mounting holes with distance 80x60 mm | Wheel with ball bearing and injection-moulded polyurethane tread with hardness 92 ° Shore A | Indestructable footing, effortless burden transport, chemical resistance, low

## Product information

- Article code 2-121-25K
- SKU 42384
- EAN 3838461423840

## Specifications

The result of our quality is maximum performance!

[Close](#)

[Close](#)



## Product description

heavy duty Wheel with ball bearing and black rubber tyre with hardness 92 ° Shore A on aluminium

Wheel diameter x width: 125 x 40 mm

Axle hole: 12 mm

Hub length: 44 mm

### Approved and tested load capacity

Dynamic 200 kg

Static 250 kg

### Temperature range:

Continuous operation: -20 | +70°C

Short (10 min) exposure: -30 | +80°C

### Advantages of this Firm and soft way wheel:

- ✓ moving of goods
- ✓ for uneven floor
- ✓ weight capacity

## LIV SYSTEMS heavy duty wheel + black rubber tyre Ø125 x W40mm for 200kg Prod ID: 42343

ID 42343:heavy duty Wheel with ball bearing and black rubber tyre with hardness 92 ° Shore A on aluminium | Axle hole: 12 mm | Hub length: 44 mm | Firm and soft way, quite moving of goods, made for uneven floor, high weight capacity

## Product information

- Article code 2-110-25K
- SKU 42343
- EAN 3838461423437



## Product description

standard Swivel castor with an overall height of 155 mm

Wheel diameter x width: 125 x 35 mm

Top plate with 4 mounting holes of 9 mm, mounting hole distance 80x60 mm and top plate outer dimensions: 105x85 mm

Wheel with plain bearing and elastic rubber tyre with hardness 70 ° Shore A on polyamide.

### Approved and tested load capacity

Dynamic 200 kg

Static 250 kg

### Temperature range:

Continuous operation: -25 | +80°C

Short (10 min) exposure: -30 | +110°C

### Advantages of this silent floor motion Swivel castor:

- ✓ rolling resistance
- ✓ to surface
- ✓ barrier passing

## LIV SYSTEMS standard Swivel castor + elastic rubber tyre Ø125 x W35mm for 200kg Prod ID: 41033

ID 41033: Castor overall height 155 mm | 4 mounting holes with distance 80x60 mm | Wheel with plain bearing and elastic rubber tyre with hardness 70 ° Shore A | silent floor motion, low rolling resistance, delicate to surface, effortless barrier passing

## Product information

- Article code 2-072-25D
- SKU 41033
- EAN 3838461410338



## Product description

standard Swivel castor with an overall height of 155 mm

Wheel diameter x width: 125 x 35 mm

Top plate with 4 mounting holes of 9 mm, mounting hole distance 80x60 mm and top plate outer dimensions: 105x85 mm

Wheel with ball bearing and elastic rubber tyre with hardness 70 ° Shore A on polyamide.

### Approved and tested load capacity

Dynamic 200 kg

Static 250 kg

### Temperature range:

Continuous operation: -25 | +80°C

Short (10 min) exposure: -30 | +110°C

### Advantages of this silent floor motion Swivel castor:

- ✓ rolling resistance
- ✓ to surface
- ✓ barrier passing

## LIV SYSTEMS standard Swivel castor + elastic rubber tyre Ø125 x W35mm for 200kg Prod ID: 41024

ID 41024: Castor overall height 155 mm | 4 mounting holes with distance 80x60 mm | Wheel with ball bearing and elastic rubber tyre with hardness 70 ° Shore A | silent floor motion, low rolling resistance, delicate to surface, effortless barrier passing

## Product information

- Article code 2-072-25K
- SKU 41024
- EAN 3838461410246



## Product description

standard Swivel castor with brake with an overall height of 155 mm

Wheel diameter x width: 125 x 35 mm

Top plate with 4 mounting holes of 9 mm, mounting hole distance 80x60 mm and top plate outer dimensions: 105x85 mm

Wheel with plain bearing and elastic rubber tyre with hardness 70 ° Shore A on polyamide  
the double brake system, brakes the turning of the wheel and the swivel rotation.

### Approved and tested load capacity

Dynamic 200 kg

Static 250 kg

### Temperature range:

Continuous operation: -25 | +80°C

Short (10 min) exposure: -30 | +110°C

### Advantages of this silent floor motion Swivel castor with brake:

- ✓ rolling resistance
- ✓ to surface
- ✓ barrier passing

## LIV SYSTEMS standard Swivel castor with brake + elastic rubber tyre Ø125 x W35mm for 200kg Prod ID: 41053

ID 41053: Castor overall height 155 mm | 4 mounting holes with distance 80x60 mm | Wheel with plain bearing and elastic rubber tyre with hardness 70 ° Shore A | The double brake system, brakes the turning of the wheel and the swivel rotation. | silent flo

## Product information

- 
- Article code 2-073-25D
  - SKU 41053
  - EAN 3838461410536





## Product description

standard Swivel castor with brake with an overall height of 155 mm

Wheel diameter x width: 125 x 35 mm

Top plate with 4 mounting holes of 9 mm, mounting hole distance 80x60 mm and top plate outer dimensions: 105x85 mm

Wheel with roller bearing and elastic rubber tyre with hardness 70 ° Shore A on polyamide  
the double brake system, brakes the turning of the wheel and the swivel rotation.

### Approved and tested load capacity

Dynamic 200 kg

Static 250 kg

### Temperature range:

Continuous operation: -25 | +80°C

Short (10 min) exposure: -30 | +110°C

### Advantages of this silent floor motion Swivel castor with brake:

- ✓ rolling resistance
- ✓ to surface
- ✓ barrier passing

## LIV SYSTEMS standard Swivel castor with brake + elastic rubber tyre Ø125 x W35mm for 200kg Prod ID: 41045

ID 41045: Castor overall height 155 mm | 4 mounting holes with distance 80x60 mm | Wheel with roller bearing and elastic rubber tyre with hardness 70 ° Shore A | The double brake system, brakes the turning of the wheel and the swivel rotation. | silent fl

## Product information

- 
- Article code 2-073-25V
  - SKU 41045
  - EAN 3838461410451



## Product description

standard Swivel castor with brake with an overall height of 155 mm

Wheel diameter x width: 125 x 35 mm

Top plate with 4 mounting holes of 9 mm, mounting hole distance 80x60 mm and top plate outer dimensions: 105x85 mm

Wheel with ball bearing and elastic rubber tyre with hardness 70 ° Shore A on polyamide  
the double brake system, brakes the turning of the wheel and the swivel rotation.

### Approved and tested load capacity

Dynamic 200 kg

Static 250 kg

### Temperature range:

Continuous operation: -25 | +80°C

Short (10 min) exposure: -30 | +110°C


### Advantages of this silent floor motion Swivel castor with brake:

- ✓ rolling resistance
- ✓ to surface
- ✓ barrier passing

## LIV SYSTEMS standard Swivel castor with brake + elastic rubber tyre Ø125 x W35mm for 200kg Prod ID: 41044

ID 41044: Castor overall height 155 mm | 4 mounting holes with distance 80x60 mm | Wheel with ball bearing and elastic rubber tyre with hardness 70 ° Shore A | The double brake system, brakes the turning of the wheel and the swivel rotation. | silent floor

## Product information

- 
- Article code 2-073-25K
  - SKU 41044
  - EAN 3838461410444



## Product description

standard Swivel castor with brake with an overall height of 155 mm

Wheel diameter x width: 125 x 35 mm

Top plate with 4 mounting holes of 12,5 mm, mounting hole distance #\$\$% mm and top plate outer dimensions: 70 mm

Wheel with plain bearing and elastic rubber tyre with hardness 70 ° Shore A on polyamide  
the double brake system, brakes the turning of the wheel and the swivel rotation.

### Approved and tested load capacity

Dynamic 200 kg

Static 250 kg

### Temperature range:

Continuous operation: -25 | +80°C

Short (10 min) exposure: -30 | +110°C


### Advantages of this silent floor motion Swivel castor with brake:

- ✓ rolling resistance
- ✓ to surface
- ✓ barrier passing

## LIV SYSTEMS standard Swivel castor with brake + elastic rubber tyre Ø125 x W35mm for 200kg Prod ID: 41093

ID 41093: Castor overall height 155 mm | 4 mounting holes with distance #\$\$% mm | Wheel with plain bearing and elastic rubber tyre with hardness 70 ° Shore A | The double brake system, brakes the turning of the wheel and the swivel rotation. | silent floor

## Product information

- 
- Article code 2-075-25D
  - SKU 41093
  - EAN 3838461410932



## Product description

standard Swivel castor with brake with an overall height of 155 mm

Wheel diameter x width: 125 x 35 mm

Top plate with 4 mounting holes of 12,5 mm, mounting hole distance #\$\$% mm and top plate outer dimensions: 70 mm

Wheel with roller bearing and elastic rubber tyre with hardness 70 ° Shore A on polyamide  
the double brake system, brakes the turning of the wheel and the swivel rotation.

### Approved and tested load capacity

Dynamic 200 kg

Static 250 kg

### Temperature range:

Continuous operation: -25 | +80°C

Short (10 min) exposure: -30 | +110°C

### Advantages of this silent floor motion Swivel castor with brake:

- ✓ rolling resistance
- ✓ to surface
- ✓ barrier passing

## LIV SYSTEMS standard Swivel castor with brake + elastic rubber tyre Ø125 x W35mm for 200kg Prod ID: 41085

ID 41085: Castor overall height 155 mm | 4 mounting holes with distance #\$\$% mm | Wheel with roller bearing and elastic rubber tyre with hardness 70 ° Shore A | The double brake system, brakes the turning of the wheel and the swivel rotation. | silent floor

## Product information

- 
- Article code 2-075-25V
  - SKU 41085
  - EAN 3838461410857



## Product description

standard Fixed castor with an overall height of 155 mm

Wheel diameter x width: 125 x 35 mm

Top plate with 4 mounting holes of 9 mm, mounting hole distance 80x60 mm and top plate outer dimensions: 105x85 mm

Wheel with plain bearing and elastic rubber tyre with hardness 70 ° Shore A on polyamide.

### Approved and tested load capacity

Dynamic 200 kg

Static 250 kg

### Temperature range:

Continuous operation: -25 | +80°C

Short (10 min) exposure: -30 | +110°C

### Advantages of this silent floor motion Fixed castor:

- ✓ rolling resistance
- ✓ to surface
- ✓ barrier passing

## LIV SYSTEMS standard Fixed castor + elastic rubber tyre Ø125 x W35mm for 200kg Prod ID: 41013

ID 41013: Castor overall height 155 mm | 4 mounting holes with distance 80x60 mm | Wheel with plain bearing and elastic rubber tyre with hardness 70 ° Shore A | silent floor motion, low rolling resistance, delicate to surface, effortless barrier passing

## Product information

- Article code 2-071-25D
- SKU 41013
- EAN 3838461410130



## Product description

standard Fixed castor with an overall height of 155 mm

Wheel diameter x width: 125 x 35 mm

Top plate with 4 mounting holes of 9 mm, mounting hole distance 80x60 mm and top plate outer dimensions: 105x85 mm

Wheel with roller bearing and elastic rubber tyre with hardness 70 ° Shore A on polyamide.

### Approved and tested load capacity

Dynamic 200 kg

Static 250 kg

### Temperature range:

Continuous operation: -25 | +80°C

Short (10 min) exposure: -30 | +110°C

### Advantages of this silent floor motion Fixed castor:

- ✓ rolling resistance
- ✓ to surface
- ✓ barrier passing

## LIV SYSTEMS standard Fixed castor + elastic rubber tyre Ø125 x W35mm for 200kg Prod ID: 41005

ID 41005: Castor overall height 155 mm | 4 mounting holes with distance 80x60 mm | Wheel with roller bearing and elastic rubber tyre with hardness 70 ° Shore A | silent floor motion, low rolling resistance, delicate to surface, effortless barrier passing

## Product information

- Article code 2-071-25V
- SKU 41005
- EAN 3838461410055



## Product description

standard Fixed castor with an overall height of 155 mm

Wheel diameter x width: 125 x 35 mm

Top plate with 4 mounting holes of 9 mm, mounting hole distance 80x60 mm and top plate outer dimensions: 105x85 mm

Wheel with ball bearing and elastic rubber tyre with hardness 70 ° Shore A on polyamide.

### Approved and tested load capacity

Dynamic 200 kg

Static 250 kg

### Temperature range:

Continuous operation: -25 | +80°C

Short (10 min) exposure: -30 | +110°C

### Advantages of this silent floor motion Fixed castor:

- ✓ rolling resistance
- ✓ to surface
- ✓ barrier passing

## LIV SYSTEMS standard Fixed castor + elastic rubber tyre Ø125 x W35mm for 200kg Prod ID: 41004

ID 41004: Castor overall height 155 mm | 4 mounting holes with distance 80x60 mm | Wheel with ball bearing and elastic rubber tyre with hardness 70 ° Shore A | silent floor motion, low rolling resistance, delicate to surface, effortless barrier passing

## Product information

- Article code 2-071-25K
- SKU 41004
- EAN 3838461410048



## Product description

standard Swivel castor with an overall height of 155 mm

Wheel diameter x width: 125 x 35 mm

Top plate with 4 mounting holes of 12,5 mm, mounting hole distance #\$\$ mm and top plate outer dimensions: 70 mm

Wheel with plain bearing and elastic rubber tyre with hardness 70 ° Shore A on polyamide.

### Approved and tested load capacity

Dynamic 200 kg

Static 250 kg

### Temperature range:

Continuous operation: -25 | +80°C

Short (10 min) exposure: -30 | +110°C

### Advantages of this silent floor motion Swivel castor:

- ✓ rolling resistance
- ✓ to surface
- ✓ barrier passing

## LIV SYSTEMS standard Swivel castor + elastic rubber tyre Ø125 x W35mm for 200kg Prod ID: 41073

ID 41073: Castor overall height 155 mm | 4 mounting holes with distance #\$\$ mm | Wheel with plain bearing and elastic rubber tyre with hardness 70 ° Shore A | silent floor motion, low rolling resistance, delicate to surface, effortless barrier passing

## Product information

- Article code 2-074-25D
- SKU 41073
- EAN 3838461410734





## Product description

standard Swivel castor with an overall height of 155 mm

Wheel diameter x width: 125 x 35 mm

Top plate with 4 mounting holes of 12,5 mm, mounting hole distance #\$\$ mm and top plate outer dimensions: 70 mm

Wheel with roller bearing and elastic rubber tyre with hardness 70 ° Shore A on polyamide.

### Approved and tested load capacity

Dynamic 200 kg

Static 250 kg

### Temperature range:

Continuous operation: -25 | +80°C

Short (10 min) exposure: -30 | +110°C

### Advantages of this silent floor motion Swivel castor:

- ✓ rolling resistance
- ✓ to surface
- ✓ barrier passing

## LIV SYSTEMS standard Swivel castor + elastic rubber tyre Ø125 x W35mm for 200kg Prod ID: 41065

ID 41065: Castor overall height 155 mm | 4 mounting holes with distance #\$\$ mm | Wheel with roller bearing and elastic rubber tyre with hardness 70 ° Shore A | silent floor motion, low rolling resistance, delicate to surface, effortless barrier passing

## Product information

- Article code 2-074-25V
- SKU 41065
- EAN 3838461410659



## Product description

standard Swivel castor with an overall height of 155 mm

Wheel diameter x width: 125 x 35 mm

Top plate with 4 mounting holes of 12,5 mm, mounting hole distance #\$\$ mm and top plate outer dimensions: 70 mm

Wheel with ball bearing and elastic rubber tyre with hardness 70 ° Shore A on polyamide.

### Approved and tested load capacity

Dynamic 200 kg

Static 250 kg

### Temperature range:

Continuous operation: -25 | +80°C

Short (10 min) exposure: -30 | +110°C

### Advantages of this silent floor motion Swivel castor:

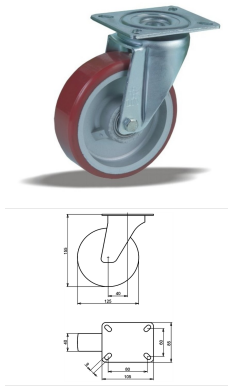
- ✓ rolling resistance
- ✓ to surface
- ✓ barrier passing

## LIV SYSTEMS standard Swivel castor + elastic rubber tyre Ø125 x W35mm for 200kg Prod ID: 41064

ID 41064: Castor overall height 155 mm | 4 mounting holes with distance #\$\$ mm | Wheel with ball bearing and elastic rubber tyre with hardness 70 ° Shore A | silent floor motion, low rolling resistance, delicate to surface, effortless barrier passing

## Product information

- Article code 2-074-25K
- SKU 41064
- EAN 3838461410642



## Product description

heavy duty Swivel castor with an overall height of 155 mm

Wheel diameter x width: 125 x 40 mm

Top plate with 4 mounting holes of 9 mm, mounting hole distance 80x60 mm and top plate outer dimensions: 105x85 mm

Wheel with ball bearing and injection-moulded polyurethane tread with hardness 92 ° Shore A on aluminium.

### Approved and tested load capacity

Dynamic 300 kg

Static 370 kg

### Temperature range:

Continuous operation: -25 | -55°C

Short (10 min) exposure: -40 | +55°C

### Advantages of this Indestructable footing Swivel castor:

- ✓ burden transport
- ✓ resistance
- ✓ own weight

## LIV SYSTEMS heavy duty Swivel castor + injection-moulded polyurethane tread Ø125 x W40mm for 300kg Prod ID: 42395

ID 42395: Castor overall height 155 mm | 4 mounting holes with distance 80x60 mm | Wheel with ball bearing and injection-moulded polyurethane tread with hardness 92 ° Shore A | Indestructable footing, effortless burden transport, chemical resistance, low

## Product information

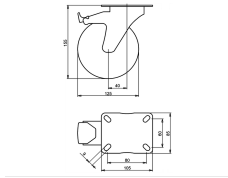
- Article code 2-122-25K
- SKU 42395
- EAN 3838461423956

## Specifications

The result of our quality is maximum performance!

[Close](#)

[Close](#)



## Product description

heavy duty Swivel castor with brake with an overall height of 155 mm

Wheel diameter x width: 125 x 40 mm

Top plate with 4 mounting holes of 9 mm, mounting hole distance 80x60 mm and top plate outer dimensions: 105x85 mm

Wheel with ball bearing and injection-moulded polyurethane tread with hardness 92 ° Shore A on aluminium

the double brake system, brakes the turning of the wheel and the swivel rotation.

### Approved and tested load capacity

Dynamic 300 kg

Static 370 kg

### Temperature range:

Continuous operation: -25 | -55°C

Short (10 min) exposure: -40 | +55°C

### Advantages of this Indestructable footing Swivel castor with brake:

- ✓ burden transport
- ✓ resistance
- ✓ own weight

## LIV SYSTEMS heavy duty Swivel castor with brake + injection-moulded polyurethane tread Ø125 x W40mm for 300kg Prod ID: 42413

ID 42413: Castor overall height 155 mm | 4 mounting holes with distance 80x60 mm | Wheel with ball bearing and injection-moulded polyurethane tread with hardness 92 ° Shore A | The double brake system, brakes the turning of the wheel and the swivel rotation

## Product information

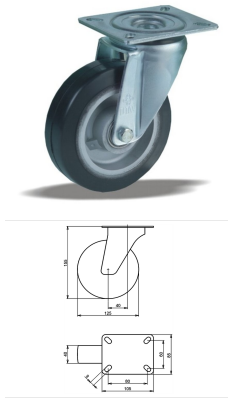
- Article code 2-123-25K
- SKU 42413
- EAN 3838461424137

## Specifications

The result of our quality is maximum performance!

[Close](#)

[Close](#)



## Product description

heavy duty Swivel castor with an overall height of 155 mm  
 Wheel diameter x width: 125 x 40 mm  
 Top plate with 4 mounting holes of 9 mm, mounting hole distance 80x60 mm and top plate outer dimensions: 105x85 mm  
 Wheel with ball bearing and black rubber tyre with hardness 92 ° Shore A on aluminium.

### Approved and tested load capacity

Dynamic 200 kg  
 Static 250 kg

### Temperature range:

Continuous operation: -20 | +70°C  
 Short (10 min) exposure: -30 | +80°C

### Advantages of this Firm and soft way Swivel castor:

- ✓ moving of goods
- ✓ for uneven floor
- ✓ weight capacity

## LIV SYSTEMS heavy duty Swivel castor + black rubber tyre Ø125 x W40mm for 200kg Prod ID: 42363

ID 42363: Castor overall height 155 mm | 4 mounting holes with distance 80x60 mm | Wheel with ball bearing and black rubber tyre with hardness 92 ° Shore A | Firm and soft way, quite moving of goods, made for uneven floor, high weight capacity

## Product information

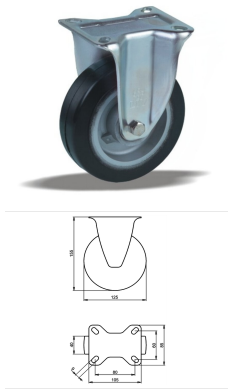
- Article code 2-112-25K
- SKU 42363
- EAN 3838461423635

## Specifications

The result of our quality is maximum performance!

[Close](#)

[Close](#)



## Product description

heavy duty Fixed castor with an overall height of 155 mm

Wheel diameter x width: 125 x 40 mm

Top plate with 4 mounting holes of 9 mm, mounting hole distance 80x60 mm and top plate outer dimensions: 105x85 mm

Wheel with ball bearing and black rubber tyre with hardness 92 ° Shore A on aluminium.

### Approved and tested load capacity

Dynamic 200 kg

Static 250 kg

### Temperature range:

Continuous operation: -20 | +70°C

Short (10 min) exposure: -30 | +80°C

### Advantages of this Firm and soft way Fixed castor:

- ✓ moving of goods
- ✓ for uneven floor
- ✓ weight capacity

## LIV SYSTEMS heavy duty Fixed castor + black rubber tyre Ø125 x W40mm for 200kg Prod ID: 42353

ID 42353: Castor overall height 155 mm | 4 mounting holes with distance 80x60 mm | Wheel with ball bearing and black rubber tyre with hardness 92 ° Shore A | Firm and soft way, quite moving of goods, made for uneven floor, high weight capacity

## Product information

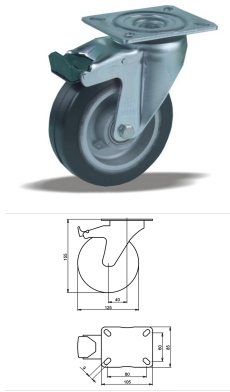
- Article code 2-111-25K
- SKU 42353
- EAN 3838461423536

## Specifications

The result of our quality is maximum performance!

[Close](#)

[Close](#)



## Product description

heavy duty Swivel castor with brake with an overall height of 155 mm  
 Wheel diameter x width: 125 x 40 mm  
 Top plate with 4 mounting holes of 9 mm, mounting hole distance 80x60 mm and top plate outer dimensions: 105x85 mm  
 Wheel with ball bearing and black rubber tyre with hardness 92 ° Shore A on aluminium  
 the double brake system, brakes the turning of the wheel and the swivel rotation.

### Approved and tested load capacity

Dynamic 200 kg  
 Static 250 kg

### Temperature range:

Continious operation: -20 | +70°C  
 Short (10 min) exposure: -30 | +80°C

### Advantages of this Firm and soft way Swivel castor with brake:

- ✓ moving of goods
- ✓ for uneven floor
- ✓ weight capacity

## LIV SYSTEMS heavy duty Swivel castor with brake + black rubber tyre Ø125 x W40mm for 200kg Prod ID: 42373

ID 42373: Castor overall height 155 mm | 4 mounting holes with distance 80x60 mm | Wheel with ball bearing and black rubber tyre with hardness 92 ° Shore A | The double brake system, brakes the turning of the wheel and the swivel rotation. | Firm and sof

## Product information

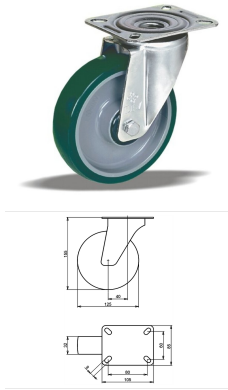
- Article code 2-113-25K
- SKU 42373
- EAN 3838461423734

## Specifications

The result of our quality is maximum performance!

[Close](#)

[Close](#)



## Product description

standard Swivel castor with an overall height of 155 mm

Wheel diameter x width: 125 x 32 mm

Top plate with 4 mounting holes of 9 mm, mounting hole distance 80x60 mm and top plate outer dimensions: 105x85 mm

Wheel with plain bearing and injection-moulded polyurethane tread with hardness 92 ° Shore A on polyamide.

### Approved and tested load capacity

Dynamic 200 kg

Static 250 kg

### Temperature range:

Continuous operation: -25 | +55°C

Short (10 min) exposure: -30 | +55°C

### Advantages of this Power ride Swivel castor:

- ✓ chemical resistance
- ✓ surface pressure
- ✓ force to start

## LIV SYSTEMS standard Swivel castor + injection-moulded polyurethane tread Ø125 x W32mm for 200kg Prod ID: 41133

ID 41133: Castor overall height 155 mm | 4 mounting holes with distance 80x60 mm | Wheel with plain bearing and injection-moulded polyurethane tread with hardness 92 ° Shore A | Power ride, wide chemical resistance, small surface pressure, low force to s

## Product information

- Article code 2-082-25D
- SKU 41133
- EAN 3838461411335

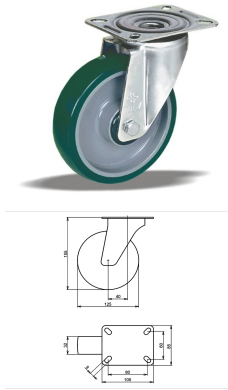
## Specifications

The result of our quality is maximum performance!

[Close](#)

[Close](#)





## Product description

standard Swivel castor with an overall height of 155 mm

Wheel diameter x width: 125 x 32 mm

Top plate with 4 mounting holes of 9 mm, mounting hole distance 80x60 mm and top plate outer dimensions: 105x85 mm

Wheel with roller bearing and injection-moulded polyurethane tread with hardness 92 ° Shore A on polyamide.

### Approved and tested load capacity

Dynamic 200 kg

Static 250 kg

### Temperature range:

Continuous operation: -25 | +55°C

Short (10 min) exposure: -30 | +55°C

### Advantages of this Power ride Swivel castor:

- ✓ chemical resistance
- ✓ surface pressure
- ✓ force to start

## LIV SYSTEMS standard Swivel castor + injection-moulded polyurethane tread Ø125 x W32mm for 200kg Prod ID: 41125

ID 41125: Castor overall height 155 mm | 4 mounting holes with distance 80x60 mm | Wheel with roller bearing and injection-moulded polyurethane tread with hardness 92 ° Shore A | Power ride, wide chemical resistance, small surface pressure, low force to

## Product information

- Article code 2-082-25V
- SKU 41125
- EAN 3838461411250

## Specifications

The result of our quality is maximum performance!

[Close](#)

[Close](#)



## Product description

standard Swivel castor with brake with an overall height of 155 mm

Wheel diameter x width: 125 x 32 mm

Top plate with 4 mounting holes of 12,5 mm, mounting hole distance #\$\$ mm and top plate outer dimensions: 70 mm

Wheel with roller bearing and injection-moulded polyurethane tread with hardness 92 ° Shore A on polyamide the double brake system, brakes the turning of the wheel and the swivel rotation.

### Approved and tested load capacity

Dynamic 200 kg

Static 250 kg

### Temperature range:

Continuous operation: -25 | +55°C

Short (10 min) exposure: -30 | +55°C

### Advantages of this Power ride Swivel castor with brake:

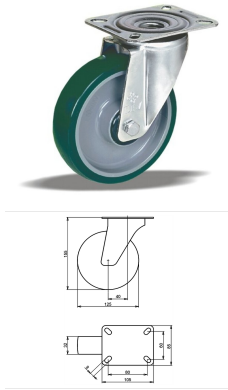
- ✓ chemical resistance
- ✓ surface pressure
- ✓ force to start

## LIV SYSTEMS standard Swivel castor with brake + injection-moulded polyurethane tread Ø125 x W32mm for 200kg Prod ID: 41185

ID 41185: Castor overall height 155 mm | 4 mounting holes with distance #\$\$ mm | Wheel with roller bearing and injection-moulded polyurethane tread with hardness 92 ° Shore A | The double brake system, brakes the turning of the wheel and the swivel rotat

## Product information

- 
- Article code 2-085-25V
  - SKU 41185
  - EAN 3838461411854



## Product description

standard Swivel castor with an overall height of 155 mm

Wheel diameter x width: 125 x 32 mm

Top plate with 4 mounting holes of 9 mm, mounting hole distance 80x60 mm and top plate outer dimensions: 105x85 mm

Wheel with ball bearing and injection-moulded polyurethane tread with hardness 92 ° Shore A on polyamide.

### Approved and tested load capacity

Dynamic 200 kg

Static 250 kg

### Temperature range:

Continuous operation: -25 | +55°C

Short (10 min) exposure: -30 | +55°C

### Advantages of this Power ride Swivel castor:

- ✓ chemical resistance
- ✓ surface pressure
- ✓ force to start

## LIV SYSTEMS standard Swivel castor + injection-moulded polyurethane tread Ø125 x W32mm for 200kg Prod ID: 41124

ID 41124: Castor overall height 155 mm | 4 mounting holes with distance 80x60 mm | Wheel with ball bearing and injection-moulded polyurethane tread with hardness 92 ° Shore A | Power ride, wide chemical resistance, small surface pressure, low force to st

## Product information

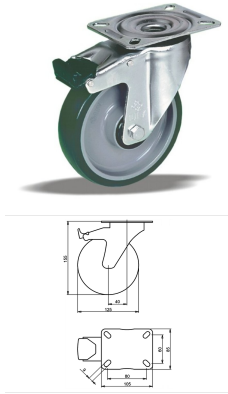
- Article code 2-082-25K
- SKU 41124
- EAN 3838461411243

## Specifications

The result of our quality is maximum performance!

[Close](#)

[Close](#)



## Product description

standard Swivel castor with brake with an overall height of 155 mm  
 Wheel diameter x width: 125 x 32 mm  
 Top plate with 4 mounting holes of 9 mm, mounting hole distance 80x60 mm and top plate outer dimensions: 105x85 mm  
 Wheel with plain bearing and injection-moulded polyurethane tread with hardness 92 ° Shore A on polyamide  
 the double brake system, brakes the turning of the wheel and the swivel rotation.

### Approved and tested load capacity

Dynamic 200 kg  
 Static 250 kg

### Temperature range:

Continuous operation: -25 | +55°C  
 Short (10 min) exposure: -30 | +55°C

### Advantages of this Power ride Swivel castor with brake:

- ✓ chemical resistance
- ✓ surface pressure
- ✓ force to start

## LIV SYSTEMS standard Swivel castor with brake + injection-moulded polyurethane tread Ø125 x W32mm for 200kg Prod ID: 41153

ID 41153: Castor overall height 155 mm | 4 mounting holes with distance 80x60 mm | Wheel with plain bearing and injection-moulded polyurethane tread with hardness 92 ° Shore A | The double brake system, brakes the turning of the wheel and the swivel rota

## Product information

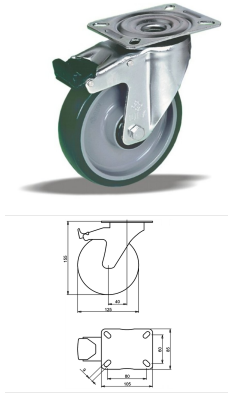
- Article code 2-083-25D
- SKU 41153
- EAN 3838461411533

## Specifications

The result of our quality is maximum performance!

[Close](#)

[Close](#)



## Product description

standard Swivel castor with brake with an overall height of 155 mm  
 Wheel diameter x width: 125 x 32 mm  
 Top plate with 4 mounting holes of 9 mm, mounting hole distance 80x60 mm and top plate outer dimensions: 105x85 mm  
 Wheel with roller bearing and injection-moulded polyurethane tread with hardness 92 ° Shore A on polyamide  
 the double brake system, brakes the turning of the wheel and the swivel rotation.

### Approved and tested load capacity

Dynamic 200 kg  
 Static 250 kg

### Temperature range:

Continuous operation: -25 | +55°C  
 Short (10 min) exposure: -30 | +55°C

### Advantages of this Power ride Swivel castor with brake:

- ✓ chemical resistance
- ✓ surface pressure
- ✓ force to start

## LIV SYSTEMS standard Swivel castor with brake + injection-moulded polyurethane tread Ø125 x W32mm for 200kg Prod ID: 41145

ID 41145: Castor overall height 155 mm | 4 mounting holes with distance 80x60 mm | Wheel with roller bearing and injection-moulded polyurethane tread with hardness 92 ° Shore A | The double brake system, brakes the turning of the wheel and the swivel rot

## Product information

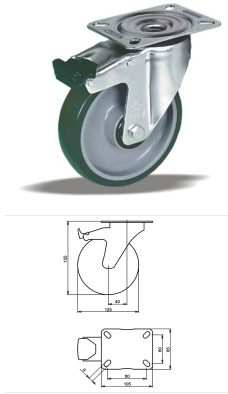
- Article code 2-083-25V
- SKU 41145
- EAN 3838461411458

## Specifications

The result of our quality is maximum performance!

[Close](#)

[Close](#)



## Product description

standard Swivel castor with brake with an overall height of 155 mm  
 Wheel diameter x width: 125 x 32 mm  
 Top plate with 4 mounting holes of 9 mm, mounting hole distance 80x60 mm and top plate outer dimensions: 105x85 mm  
 Wheel with ball bearing and injection-moulded polyurethane tread with hardness 92 ° Shore A on polyamide  
 the double brake system, brakes the turning of the wheel and the swivel rotation.

### Approved and tested load capacity

Dynamic 200 kg  
 Static 250 kg

### Temperature range:

Continuous operation: -25 | +55°C  
 Short (10 min) exposure: -30 | +55°C

### Advantages of this Power ride Swivel castor with brake:

- ✓ chemical resistance
- ✓ surface pressure
- ✓ force to start

## LIV SYSTEMS standard Swivel castor with brake + injection-moulded polyurethane tread Ø125 x W32mm for 200kg Prod ID: 41144

ID 41144: Castor overall height 155 mm | 4 mounting holes with distance 80x60 mm | Wheel with ball bearing and injection-moulded polyurethane tread with hardness 92 ° Shore A | The double brake system, brakes the turning of the wheel and the swivel rotation

## Product information

- Article code 2-083-25K
- SKU 41144
- EAN 3838461411441

## Specifications

The result of our quality is maximum performance!

[Close](#)

[Close](#)



## Product description

standard Swivel castor with brake with an overall height of 155 mm

Wheel diameter x width: 125 x 32 mm

Top plate with 4 mounting holes of 12,5 mm, mounting hole distance #\$\$ mm and top plate outer dimensions: 70 mm

Wheel with plain bearing and injection-moulded polyurethane tread with hardness 92 ° Shore A on polyamide the double brake system, brakes the turning of the wheel and the swivel rotation.

### Approved and tested load capacity

Dynamic 200 kg

Static 250 kg

### Temperature range:

Continuous operation: -25 | +55°C

Short (10 min) exposure: -30 | +55°C


### Advantages of this Power ride Swivel castor with brake:

- ✓ chemical resistance
- ✓ surface pressure
- ✓ force to start

## LIV SYSTEMS standard Swivel castor with brake + injection-moulded polyurethane tread Ø125 x W32mm for 200kg Prod ID: 41193

ID 41193: Castor overall height 155 mm | 4 mounting holes with distance #\$\$ mm | Wheel with plain bearing and injection-moulded polyurethane tread with hardness 92 ° Shore A | The double brake system, brakes the turning of the wheel and the swivel rotation

## Product information

- 
- Article code 2-085-25D
  - SKU 41193
  - EAN 3838461411939



## Product description

standard Swivel castor with brake with an overall height of 155 mm

Wheel diameter x width: 125 x 32 mm

Top plate with 4 mounting holes of 12,5 mm, mounting hole distance #\$\$% mm and top plate outer dimensions: 70 mm

Wheel with ball bearing and injection-moulded polyurethane tread with hardness 92 ° Shore A on polyamide the double brake system, brakes the turning of the wheel and the swivel rotation.

### Approved and tested load capacity

Dynamic 200 kg

Static 250 kg

### Temperature range:

Continuous operation: -25 | +55°C

Short (10 min) exposure: -30 | +55°C

### Advantages of this Power ride Swivel castor with brake:

- ✓ chemical resistance
- ✓ surface pressure
- ✓ force to start

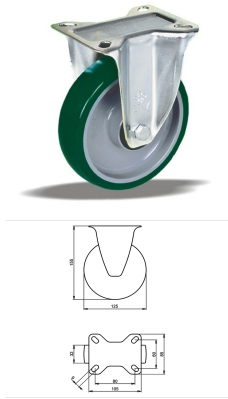
## LIV SYSTEMS standard Swivel castor with brake + injection-moulded polyurethane tread Ø125 x W32mm for 200kg Prod ID: 41184

ID 41184: Castor overall height 155 mm | 4 mounting holes with distance #\$\$% mm | Wheel with ball bearing and injection-moulded polyurethane tread with hardness 92 ° Shore A | The double brake system, brakes the turning of the wheel and the swivel rotatio

## Product information

- 
- Article code 2-085-25K
  - SKU 41184
  - EAN 3838461411847





## Product description

standard Fixed castor with an overall height of 155 mm

Wheel diameter x width: 125 x 32 mm

Top plate with 4 mounting holes of 9 mm, mounting hole distance 80x60 mm and top plate outer dimensions: 105x85 mm

Wheel with plain bearing and injection-moulded polyurethane tread with hardness 92 ° Shore A on polyamide.

### Approved and tested load capacity

Dynamic 200 kg

Static 250 kg

### Temperature range:

Continuous operation: -25 | +55°C

Short (10 min) exposure: -30 | +55°C

### Advantages of this Power ride Fixed castor:

- ✓ chemical resistance
- ✓ surface pressure
- ✓ force to start

## LIV SYSTEMS standard Fixed castor + injection-moulded polyurethane tread Ø125 x W32mm for 200kg Prod ID: 41113

ID 41113: Castor overall height 155 mm | 4 mounting holes with distance 80x60 mm | Wheel with plain bearing and injection-moulded polyurethane tread with hardness 92 ° Shore A | Power ride, wide chemical resistance, small surface pressure, low force to s

## Product information

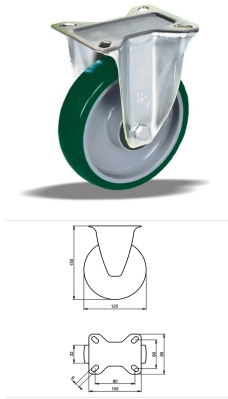
- Article code 2-081-25D
- SKU 41113
- EAN 3838461411137

## Specifications

The result of our quality is maximum performance!

[Close](#)

[Close](#)



## Product description

standard Fixed castor with an overall height of 155 mm

Wheel diameter x width: 125 x 32 mm

Top plate with 4 mounting holes of 9 mm, mounting hole distance 80x60 mm and top plate outer dimensions: 105x85 mm

Wheel with roller bearing and injection-moulded polyurethane tread with hardness 92 ° Shore A on polyamide.

### Approved and tested load capacity

Dynamic 200 kg

Static 250 kg

### Temperature range:

Continuous operation: -25 | +55°C

Short (10 min) exposure: -30 | +55°C

### Advantages of this Power ride Fixed castor:

- ✓ chemical resistance
- ✓ surface pressure
- ✓ force to start

## LIV SYSTEMS standard Fixed castor + injection-moulded polyurethane tread Ø125 x W32mm for 200kg Prod ID: 41105

ID 41105: Castor overall height 155 mm | 4 mounting holes with distance 80x60 mm | Wheel with roller bearing and injection-moulded polyurethane tread with hardness 92 ° Shore A | Power ride, wide chemical resistance, small surface pressure, low force to

## Product information

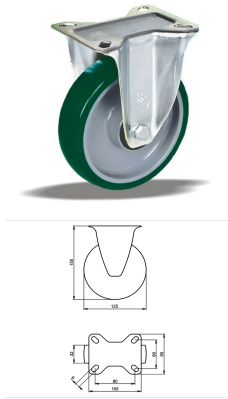
- Article code 2-081-25V
- SKU 41105
- EAN 3838461411052

## Specifications

The result of our quality is maximum performance!

[Close](#)

[Close](#)



## Product description

standard Fixed castor with an overall height of 155 mm

Wheel diameter x width: 125 x 32 mm

Top plate with 4 mounting holes of 9 mm, mounting hole distance 80x60 mm and top plate outer dimensions: 105x85 mm

Wheel with ball bearing and injection-moulded polyurethane tread with hardness 92 ° Shore A on polyamide.

### Approved and tested load capacity

Dynamic 200 kg

Static 250 kg

### Temperature range:

Continuous operation: -25 | +55°C

Short (10 min) exposure: -30 | +55°C

### Advantages of this Power ride Fixed castor:

- ✓ chemical resistance
- ✓ surface pressure
- ✓ force to start

## LIV SYSTEMS standard Fixed castor + injection-moulded polyurethane tread Ø125 x W32mm for 200kg Prod ID: 41104

ID 41104: Castor overall height 155 mm | 4 mounting holes with distance 80x60 mm | Wheel with ball bearing and injection-moulded polyurethane tread with hardness 92 ° Shore A | Power ride, wide chemical resistance, small surface pressure, low force to st

## Product information

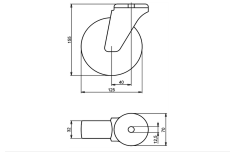
- Article code 2-081-25K
- SKU 41104
- EAN 3838461411045

## Specifications

The result of our quality is maximum performance!

[Close](#)

[Close](#)



## Product description

standard Swivel castor with an overall height of 155 mm

Wheel diameter x width: 125 x 32 mm

Top plate with 4 mounting holes of 12,5 mm, mounting hole distance #\$\$ mm and top plate outer dimensions: 70 mm

Wheel with plain bearing and injection-moulded polyurethane tread with hardness 92 ° Shore A on polyamide.

### Approved and tested load capacity

Dynamic 200 kg

Static 250 kg

### Temperature range:

Continuous operation: -25 | +55°C

Short (10 min) exposure: -30 | +55°C

### Advantages of this Power ride Swivel castor:

- ✓ chemical resistance
- ✓ surface pressure
- ✓ force to start

## LIV SYSTEMS standard Swivel castor + injection-moulded polyurethane tread Ø125 x W32mm for 200kg Prod ID: 41173

ID 41173: Castor overall height 155 mm | 4 mounting holes with distance #\$\$ mm | Wheel with plain bearing and injection-moulded polyurethane tread with hardness 92 ° Shore A | Power ride, wide chemical resistance, small surface pressure, low force to sta

## Product information

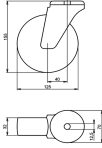
- Article code 2-084-25D
- SKU 41173
- EAN 3838461411731

## Specifications

The result of our quality is maximum performance!

[Close](#)

[Close](#)



## Product description

standard Swivel castor with an overall height of 155 mm

Wheel diameter x width: 125 x 32 mm

Top plate with 4 mounting holes of 12,5 mm, mounting hole distance #\$\$ mm and top plate outer dimensions: 70 mm

Wheel with roller bearing and injection-moulded polyurethane tread with hardness 92 ° Shore A on polyamide.

### Approved and tested load capacity

Dynamic 200 kg

Static 250 kg

### Temperature range:

Continuous operation: -25 | +55°C

Short (10 min) exposure: -30 | +55°C

### Advantages of this Power ride Swivel castor:

- ✓ chemical resistance
- ✓ surface pressure
- ✓ force to start

## LIV SYSTEMS standard Swivel castor + injection-moulded polyurethane tread Ø125 x W32mm for 200kg Prod ID: 41165

ID 41165: Castor overall height 155 mm | 4 mounting holes with distance #\$\$ mm | Wheel with roller bearing and injection-moulded polyurethane tread with hardness 92 ° Shore A | Power ride, wide chemical resistance, small surface pressure, low force to st

## Product information

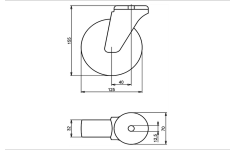
- Article code 2-084-25V
- SKU 41165
- EAN 3838461411656

## Specifications

The result of our quality is maximum performance!

[Close](#)

[Close](#)



## Product description

standard Swivel castor with an overall height of 155 mm

Wheel diameter x width: 125 x 32 mm

Top plate with 4 mounting holes of 12,5 mm, mounting hole distance #\$\$ mm and top plate outer dimensions: 70 mm

Wheel with ball bearing and injection-moulded polyurethane tread with hardness 92 ° Shore A on polyamide.

### Approved and tested load capacity

Dynamic 200 kg

Static 250 kg

### Temperature range:

Continuous operation: -25 | +55°C

Short (10 min) exposure: -30 | +55°C

### Advantages of this Power ride Swivel castor:

- ✓ chemical resistance
- ✓ surface pressure
- ✓ force to start

## LIV SYSTEMS standard Swivel castor + injection-moulded polyurethane tread Ø125 x W32mm for 200kg Prod ID: 41164

ID 41164: Castor overall height 155 mm | 4 mounting holes with distance #\$\$ mm | Wheel with ball bearing and injection-moulded polyurethane tread with hardness 92 ° Shore A | Power ride, wide chemical resistance, small surface pressure, low force to star

## Product information

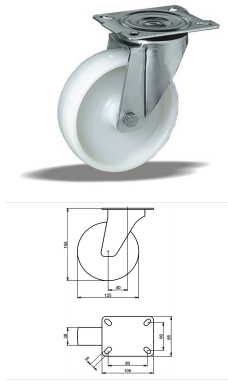
- Article code 2-084-25K
- SKU 41164
- EAN 3838461411649

## Specifications

The result of our quality is maximum performance!

[Close](#)

[Close](#)



## Product description

standard Swivel castor with an overall height of 155 mm

Wheel diameter x width: 125 x 38 mm

Top plate with 4 mounting holes of 9 mm, mounting hole distance 80x60 mm and top plate outer dimensions: 105x85 mm

Wheel with plain bearing and solid polyamide wheel with hardness 70±5 Shore D.

### Approved and tested load capacity

Dynamic 250 kg

Static 310 kg

### Temperature range:

Continuous operation: -25 | +80°C

Short (10 min) exposure: -30 | +110°C

### Advantages of this High load easy start Swivel castor:

- ✓ wearout
- ✓ effort to keep rolling
- ✓ to turn

## LIV SYSTEMS standard Swivel castor + solid polyamide wheel Ø125 x W38mm for 250kg Prod ID: 40843

ID 40843: Castor overall height 155 mm | 4 mounting holes with distance 80x60 mm | Wheel with plain bearing and solid polyamide wheel with hardness 70±5 Shore D | High load easy start, low wearout, little effort to keep rolling, easy to turn

## Product information

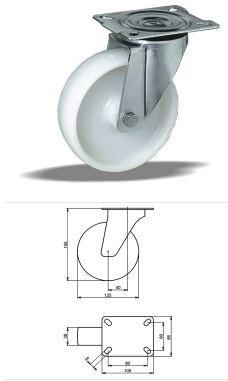
- Article code 2-062-25D
- SKU 40843
- EAN 3838461408434

## Specifications

The result of our quality is maximum performance!

[Close](#)

[Close](#)



## Product description

standard Swivel castor with an overall height of 155 mm

Wheel diameter x width: 125 x 38 mm

Top plate with 4 mounting holes of 9 mm, mounting hole distance 80x60 mm and top plate outer dimensions: 105x85 mm

Wheel with roller bearing and solid polyamide wheel with hardness 70±5 Shore D.

### Approved and tested load capacity

Dynamic 250 kg

Static 310 kg

### Temperature range:

Continuous operation: -25 | +80°C

Short (10 min) exposure: -30 | +110°C

### Advantages of this High load easy start Swivel castor:

✓ wearout

✓ effort to keep rolling

✓ to turn

## LIV SYSTEMS standard Swivel castor + solid polyamide wheel Ø125 x W38mm for 250kg Prod ID: 40834

ID 40834: Castor overall height 155 mm | 4 mounting holes with distance 80x60 mm | Wheel with roller bearing and solid polyamide wheel with hardness 70±5 Shore D | High load easy start, low wearout, little effort to keep rolling, easy to turn

## Product information

- Article code 2-062-25V
- SKU 40834
- EAN 3838461408342

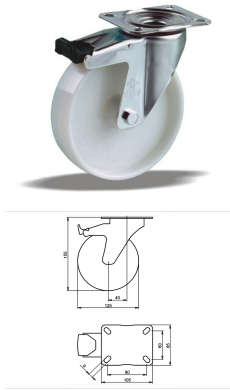
## Specifications

The result of our quality is maximum performance!

[Close](#)

[Close](#)





## Product description

standard Swivel castor with brake with an overall height of 155 mm  
 Wheel diameter x width: 125 x 38 mm  
 Top plate with 4 mounting holes of 9 mm, mounting hole distance 80x60 mm and top plate outer dimensions: 105x85 mm  
 Wheel with plain bearing and solid polyamide wheel with hardness 70±5 Shore D  
 the double brake system, brakes the turning of the wheel and the swivel rotation.

### Approved and tested load capacity

Dynamic 250 kg  
 Static 310 kg

### Temperature range:

Continuous operation: -25 | +80°C  
 Short (10 min) exposure: -30 | +110°C

### Advantages of this High load easy start Swivel castor with brake:

- ✓ wearout
- ✓ effort to keep rolling
- ✓ to turn

## LIV SYSTEMS standard Swivel castor with brake + solid polyamide wheel Ø125 x W38mm for 250kg Prod ID: 40883

ID 40883: Castor overall height 155 mm | 4 mounting holes with distance 80x60 mm | Wheel with plain bearing and solid polyamide wheel with hardness 70±5 Shore D | The double brake system, brakes the turning of the wheel and the swivel rotation. | High lo

## Product information

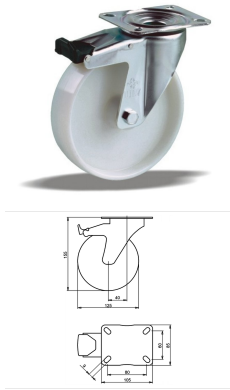
- Article code 2-063-25D
- SKU 40883
- EAN 3838461408830

## Specifications

The result of our quality is maximum performance!

[Close](#)

[Close](#)



## Product description

standard Swivel castor with brake with an overall height of 155 mm  
 Wheel diameter x width: 125 x 38 mm  
 Top plate with 4 mounting holes of 9 mm, mounting hole distance 80x60 mm and top plate outer dimensions: 105x85 mm  
 Wheel with roller bearing and solid polyamide wheel with hardness 70±5 Shore D  
 the double brake system, brakes the turning of the wheel and the swivel rotation.

### Approved and tested load capacity

Dynamic 250 kg  
 Static 310 kg

### Temperature range:

Continuous operation: -25 | +80°C  
 Short (10 min) exposure: -30 | +110°C

### Advantages of this High load easy start Swivel castor with brake:

- ✓ wearout
- ✓ effort to keep rolling
- ✓ to turn

## LIV SYSTEMS standard Swivel castor with brake + solid polyamide wheel Ø125 x W38mm for 250kg Prod ID: 40874

ID 40874: Castor overall height 155 mm | 4 mounting holes with distance 80x60 mm | Wheel with roller bearing and solid polyamide wheel with hardness 70±5 Shore D | The double brake system, brakes the turning of the wheel and the swivel rotation. | High I

## Product information

- Article code 2-063-25V
- SKU 40874
- EAN 3838461408748

## Specifications

The result of our quality is maximum performance!

[Close](#)

[Close](#)



## Product description

standard Swivel castor with brake with an overall height of 155 mm

Wheel diameter x width: 125 x 38 mm

Top plate with 4 mounting holes of 12,5 mm, mounting hole distance #\$\$% mm and top plate outer dimensions: 70 mm

Wheel with plain bearing and solid polyamide wheel with hardness 70±5 Shore D  
the double brake system, brakes the turning of the wheel and the swivel rotation.

### Approved and tested load capacity

Dynamic 250 kg

Static 310 kg

### Temperature range:

Continuous operation: -25 | +80°C

Short (10 min) exposure: -30 | +110°C

### Advantages of this High load easy start Swivel castor with brake:


- ✓ wearout
- ✓ effort to keep rolling
- ✓ to turn

## LIV SYSTEMS standard Swivel castor with brake + solid polyamide wheel

### Ø125 x W38mm for 250kg Prod ID: 40963

ID 40963: Castor overall height 155 mm | 4 mounting holes with distance #\$\$% mm | Wheel with plain bearing and solid polyamide wheel with hardness 70±5 Shore D | The double brake system, brakes the turning of the wheel and the swivel rotation. | High load

## Product information

- 
- Article code 2-065-25D
  - SKU 40963
  - EAN 3838461409639



## Product description

standard Swivel castor with brake with an overall height of 155 mm

Wheel diameter x width: 125 x 38 mm

Top plate with 4 mounting holes of 12,5 mm, mounting hole distance #\$\$% mm and top plate outer dimensions: 70 mm

Wheel with roller bearing and solid polyamide wheel with hardness 70±5 Shore D  
the double brake system, brakes the turning of the wheel and the swivel rotation.

### Approved and tested load capacity

Dynamic 250 kg

Static 310 kg

### Temperature range:

Continuous operation: -25 | +80°C

Short (10 min) exposure: -30 | +110°C

### Advantages of this High load easy start Swivel castor with brake:

- ✓ wearout
- ✓ effort to keep rolling
- ✓ to turn

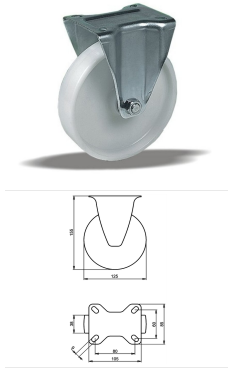
## LIV SYSTEMS standard Swivel castor with brake + solid polyamide wheel

### Ø125 x W38mm for 250kg Prod ID: 40954

ID 40954: Castor overall height 155 mm | 4 mounting holes with distance #\$\$% mm | Wheel with roller bearing and solid polyamide wheel with hardness 70±5 Shore D | The double brake system, brakes the turning of the wheel and the swivel rotation. | High loa

## Product information

- 
- Article code 2-065-25V
  - SKU 40954
  - EAN 3838461409547



## Product description

standard Fixed castor with an overall height of 155 mm

Wheel diameter x width: 125 x 38 mm

Top plate with 4 mounting holes of 9 mm, mounting hole distance 80x60 mm and top plate outer dimensions: 105x85 mm

Wheel with plain bearing and solid polyamide wheel with hardness 70±5 Shore D.

### Approved and tested load capacity

Dynamic 250 kg

Static 310 kg

### Temperature range:

Continuous operation: -25 | +80°C

Short (10 min) exposure: -30 | +110°C

### Advantages of this High load easy start Fixed castor:

- ✓ wearout
- ✓ effort to keep rolling
- ✓ to turn

## LIV SYSTEMS standard Fixed castor + solid polyamide wheel Ø125 x W38mm for 250kg Prod ID: 40803

ID 40803: Castor overall height 155 mm | 4 mounting holes with distance 80x60 mm | Wheel with plain bearing and solid polyamide wheel with hardness 70±5 Shore D | High load easy start, low wearout, little effort to keep rolling, easy to turn

## Product information

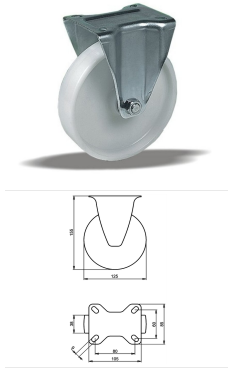
- Article code 2-061-25D
- SKU 40803
- EAN 3838461408038

## Specifications

The result of our quality is maximum performance!

[Close](#)

[Close](#)



## Product description

standard Fixed castor with an overall height of 155 mm

Wheel diameter x width: 125 x 38 mm

Top plate with 4 mounting holes of 9 mm, mounting hole distance 80x60 mm and top plate outer dimensions: 105x85 mm

Wheel with roller bearing and solid polyamide wheel with hardness 70±5 Shore D.

### Approved and tested load capacity

Dynamic 250 kg

Static 310 kg

### Temperature range:

Continuous operation: -25 | +80°C

Short (10 min) exposure: -30 | +110°C

### Advantages of this High load easy start Fixed castor:

✓ wearout

✓ effort to keep rolling

✓ to turn

## LIV SYSTEMS standard Fixed castor + solid polyamide wheel Ø125 x W38mm for 250kg Prod ID: 40794

ID 40794: Castor overall height 155 mm | 4 mounting holes with distance 80x60 mm | Wheel with roller bearing and solid polyamide wheel with hardness 70±5 Shore D | High load easy start, low wearout, little effort to keep rolling, easy to turn

## Product information

- Article code 2-061-25V
- SKU 40794
- EAN 3838461407949

## Specifications

The result of our quality is maximum performance!

[Close](#)

[Close](#)



## Product description

standard Swivel castor with an overall height of 155 mm

Wheel diameter x width: 125 x 38 mm

Top plate with 4 mounting holes of 12,5 mm, mounting hole distance #\$\$ mm and top plate outer dimensions: 70 mm

Wheel with plain bearing and solid polyamide wheel with hardness 70±5 Shore D.

### Approved and tested load capacity

Dynamic 250 kg

Static 310 kg

### Temperature range:

Continuous operation: -25 | +80°C

Short (10 min) exposure: -30 | +110°C

### Advantages of this High load easy start Swivel castor:

- ✓ wearout
- ✓ effort to keep rolling
- ✓ to turn

## LIV SYSTEMS standard Swivel castor + solid polyamide wheel Ø125 x W38mm for 250kg Prod ID: 40923

ID 40923: Castor overall height 155 mm | 4 mounting holes with distance #\$\$ mm | Wheel with plain bearing and solid polyamide wheel with hardness 70±5 Shore D | High load easy start, low wearout, little effort to keep rolling, easy to turn

## Product information

- Article code 2-064-25D
- SKU 40923
- EAN 3838461409233



## Product description

standard Swivel castor with an overall height of 155 mm

Wheel diameter x width: 125 x 38 mm

Top plate with 4 mounting holes of 12,5 mm, mounting hole distance #\$\$ mm and top plate outer dimensions: 70 mm

Wheel with roller bearing and solid polyamide wheel with hardness 70±5 Shore D.

### Approved and tested load capacity

Dynamic 250 kg

Static 310 kg

### Temperature range:

Continuous operation: -25 | +80°C

Short (10 min) exposure: -30 | +110°C

### Advantages of this High load easy start Swivel castor:

- ✓ wearout
- ✓ effort to keep rolling
- ✓ to turn

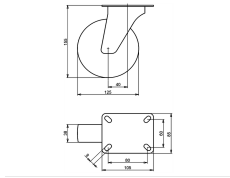
## LIV SYSTEMS standard Swivel castor + solid polyamide wheel Ø125 x W38mm for 250kg Prod ID: 40914

ID 40914: Castor overall height 155 mm | 4 mounting holes with distance #\$\$ mm | Wheel with roller bearing and solid polyamide wheel with hardness 70±5 Shore D | High load easy start, low wearout, little effort to keep rolling, easy to turn

## Product information

- Article code 2-064-25V
- SKU 40914
- EAN 3838461409141





## Product description

standard Swivel castor with an overall height of 155 mm

Wheel diameter x width: 125 x 38 mm

Top plate with 4 mounting holes of 9 mm, mounting hole distance 80x60 mm and top plate outer dimensions: 105x85 mm

Wheel with plain bearing and solid polyamide wheel with hardness 70±5 Shore D.

### Approved and tested load capacity

Dynamic 250 kg

Static 310 kg

### Temperature range:

Continuous operation: -25 | +80°C

Short (10 min) exposure: -30 | +110°C

### Advantages of this High load easy start Swivel castor:

- ✓ wearout
- ✓ effort to keep rolling
- ✓ to turn

## LIV SYSTEMS standard Swivel castor + solid polyamide wheel Ø125 x W38mm for 250kg Prod ID: 40835

ID 40835: Castor overall height 155 mm | 4 mounting holes with distance 80x60 mm | Wheel with plain bearing and solid polyamide wheel with hardness 70±5 Shore D | High load easy start, low wearout, little effort to keep rolling, easy to turn

## Product information

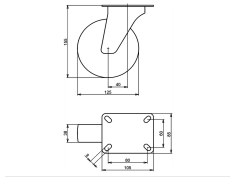
- Article code 2-062-25D
- SKU 40835
- EAN 3838461408359

## Specifications

The result of our quality is maximum performance!

[Close](#)

[Close](#)



## Product description

standard Swivel castor with an overall height of 155 mm

Wheel diameter x width: 125 x 38 mm

Top plate with 4 mounting holes of 9 mm, mounting hole distance 80x60 mm and top plate outer dimensions: 105x85 mm

Wheel with roller bearing and solid polyamide wheel with hardness 70±5 Shore D.

### Approved and tested load capacity

Dynamic 250 kg

Static 310 kg

### Temperature range:

Continuous operation: -25 | +80°C

Short (10 min) exposure: -30 | +110°C

### Advantages of this High load easy start Swivel castor:

- ✓ wearout
- ✓ effort to keep rolling
- ✓ to turn

## LIV SYSTEMS standard Swivel castor + solid polyamide wheel Ø125 x W38mm for 250kg Prod ID: 40833

ID 40833: Castor overall height 155 mm | 4 mounting holes with distance 80x60 mm | Wheel with roller bearing and solid polyamide wheel with hardness 70±5 Shore D | High load easy start, low wearout, little effort to keep rolling, easy to turn

## Product information

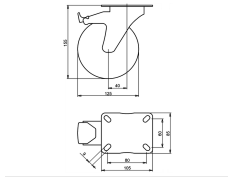
- Article code 2-062-25V
- SKU 40833
- EAN 3838461408335

## Specifications

The result of our quality is maximum performance!

[Close](#)

[Close](#)



## Product description

standard Swivel castor with brake with an overall height of 155 mm  
 Wheel diameter x width: 125 x 38 mm  
 Top plate with 4 mounting holes of 9 mm, mounting hole distance 80x60 mm and top plate outer dimensions: 105x85 mm  
 Wheel with plain bearing and solid polyamide wheel with hardness 70±5 Shore D  
 the double brake system, brakes the turning of the wheel and the swivel rotation.

### Approved and tested load capacity

Dynamic 250 kg  
 Static 310 kg

### Temperature range:

Continuous operation: -25 | +80°C  
 Short (10 min) exposure: -30 | +110°C

### Advantages of this High load easy start Swivel castor with brake:

- ✓ wearout
- ✓ effort to keep rolling
- ✓ to turn

## LIV SYSTEMS standard Swivel castor with brake + solid polyamide wheel Ø125 x W38mm for 250kg Prod ID: 40875

ID 40875: Castor overall height 155 mm | 4 mounting holes with distance 80x60 mm | Wheel with plain bearing and solid polyamide wheel with hardness 70±5 Shore D | The double brake system, brakes the turning of the wheel and the swivel rotation. | High lo

## Product information

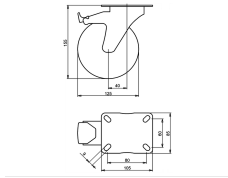
- Article code 2-063-25D
- SKU 40875
- EAN 3838461408755

## Specifications

The result of our quality is maximum performance!

[Close](#)

[Close](#)



## Product description

standard Swivel castor with brake with an overall height of 155 mm  
 Wheel diameter x width: 125 x 38 mm  
 Top plate with 4 mounting holes of 9 mm, mounting hole distance 80x60 mm and top plate outer dimensions: 105x85 mm  
 Wheel with roller bearing and solid polyamide wheel with hardness 70±5 Shore D  
 the double brake system, brakes the turning of the wheel and the swivel rotation.

### Approved and tested load capacity

Dynamic 250 kg  
 Static 310 kg

### Temperature range:

Continuous operation: -25 | +80°C  
 Short (10 min) exposure: -30 | +110°C

### Advantages of this High load easy start Swivel castor with brake:

- ✓ wearout
- ✓ effort to keep rolling
- ✓ to turn

## LIV SYSTEMS standard Swivel castor with brake + solid polyamide wheel Ø125 x W38mm for 250kg Prod ID: 40873

ID 40873: Castor overall height 155 mm | 4 mounting holes with distance 80x60 mm | Wheel with roller bearing and solid polyamide wheel with hardness 70±5 Shore D | The double brake system, brakes the turning of the wheel and the swivel rotation. | High I

## Product information

- Article code 2-063-25V
- SKU 40873
- EAN 3838461408731

## Specifications

The result of our quality is maximum performance!

[Close](#)

[Close](#)



## Product description

standard Swivel castor with an overall height of 155 mm

Wheel diameter x width: 125 x 38 mm

Top plate with 4 mounting holes of 12,5 mm, mounting hole distance #\$\$ mm and top plate outer dimensions: 70 mm

Wheel with plain bearing and solid polyamide wheel with hardness 70±5 Shore D.

### Approved and tested load capacity

Dynamic 250 kg

Static 310 kg

### Temperature range:

Continuous operation: -25 | +80°C

Short (10 min) exposure: -30 | +110°C

### Advantages of this High load easy start Swivel castor:

- ✓ wearout
- ✓ effort to keep rolling
- ✓ to turn

## LIV SYSTEMS standard Swivel castor + solid polyamide wheel Ø125 x W38mm for 250kg Prod ID: 40915

ID 40915: Castor overall height 155 mm | 4 mounting holes with distance #\$\$ mm | Wheel with plain bearing and solid polyamide wheel with hardness 70±5 Shore D | High load easy start, low wearout, little effort to keep rolling, easy to turn

## Product information

- Article code 2-064-25D
- SKU 40915
- EAN 3838461409158



## Product description

standard Swivel castor with an overall height of 155 mm

Wheel diameter x width: 125 x 38 mm

Top plate with 4 mounting holes of 12,5 mm, mounting hole distance #\$\$ mm and top plate outer dimensions: 70 mm

Wheel with roller bearing and solid polyamide wheel with hardness 70±5 Shore D.

### Approved and tested load capacity

Dynamic 250 kg

Static 310 kg

### Temperature range:

Continuous operation: -25 | +80°C

Short (10 min) exposure: -30 | +110°C

### Advantages of this High load easy start Swivel castor:

- ✓ wearout
- ✓ effort to keep rolling
- ✓ to turn

## LIV SYSTEMS standard Swivel castor + solid polyamide wheel Ø125 x W38mm for 250kg Prod ID: 40913

ID 40913: Castor overall height 155 mm | 4 mounting holes with distance #\$\$ mm | Wheel with roller bearing and solid polyamide wheel with hardness 70±5 Shore D | High load easy start, low wearout, little effort to keep rolling, easy to turn

## Product information

- Article code 2-064-25V
- SKU 40913
- EAN 3838461409134



## Product description

standard Swivel castor with brake with an overall height of 155 mm

Wheel diameter x width: 125 x 38 mm

Top plate with 4 mounting holes of 12,5 mm, mounting hole distance #\$\$% mm and top plate outer dimensions: 70 mm

Wheel with plain bearing and solid polyamide wheel with hardness 70±5 Shore D  
the double brake system, brakes the turning of the wheel and the swivel rotation.

### Approved and tested load capacity

Dynamic 250 kg

Static 310 kg

### Temperature range:

Continuous operation: -25 | +80°C

Short (10 min) exposure: -30 | +110°C


### Advantages of this High load easy start Swivel castor with brake:

- ✓ wearout
- ✓ effort to keep rolling
- ✓ to turn

## LIV SYSTEMS standard Swivel castor with brake + solid polyamide wheel Ø125 x W38mm for 250kg Prod ID: 40955

ID 40955: Castor overall height 155 mm | 4 mounting holes with distance #\$\$% mm | Wheel with plain bearing and solid polyamide wheel with hardness 70±5 Shore D | The double brake system, brakes the turning of the wheel and the swivel rotation. | High load

## Product information

- 
- Article code 2-065-25D
  - SKU 40955
  - EAN 3838461409554



## Product description

standard Swivel castor with brake with an overall height of 155 mm

Wheel diameter x width: 125 x 38 mm

Top plate with 4 mounting holes of 12,5 mm, mounting hole distance #\$\$% mm and top plate outer dimensions: 70 mm

Wheel with roller bearing and solid polyamide wheel with hardness 70±5 Shore D  
the double brake system, brakes the turning of the wheel and the swivel rotation.

### Approved and tested load capacity

Dynamic 250 kg

Static 310 kg

### Temperature range:

Continuous operation: -25 | +80°C

Short (10 min) exposure: -30 | +110°C


### Advantages of this High load easy start Swivel castor with brake:

- ✓ wearout
- ✓ effort to keep rolling
- ✓ to turn

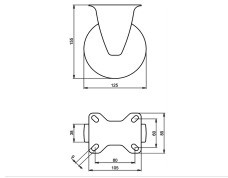
## LIV SYSTEMS standard Swivel castor with brake + solid polyamide wheel Ø125 x W38mm for 250kg Prod ID: 40953

ID 40953: Castor overall height 155 mm | 4 mounting holes with distance #\$\$% mm | Wheel with roller bearing and solid polyamide wheel with hardness 70±5 Shore D | The double brake system, brakes the turning of the wheel and the swivel rotation. | High loa

## Product information

- 
- Article code 2-065-25V
  - SKU 40953
  - EAN 3838461409530





## Product description

standard Fixed castor with an overall height of 155 mm

Wheel diameter x width: 125 x 38 mm

Top plate with 4 mounting holes of 9 mm, mounting hole distance 80x60 mm and top plate outer dimensions: 105x85 mm

Wheel with plain bearing and solid polyamide wheel with hardness 70±5 Shore D.

### Approved and tested load capacity

Dynamic 250 kg

Static 310 kg

### Temperature range:

Continuous operation: -25 | +80°C

Short (10 min) exposure: -30 | +110°C

### Advantages of this High load easy start Fixed castor:

- ✓ wearout
- ✓ effort to keep rolling
- ✓ to turn

## LIV SYSTEMS standard Fixed castor + solid polyamide wheel Ø125 x W38mm for 250kg Prod ID: 40795

ID 40795: Castor overall height 155 mm | 4 mounting holes with distance 80x60 mm | Wheel with plain bearing and solid polyamide wheel with hardness 70±5 Shore D | High load easy start, low wearout, little effort to keep rolling, easy to turn

## Product information

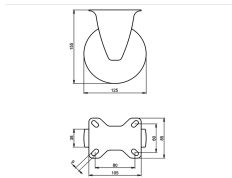
- Article code 2-061-25D
- SKU 40795
- EAN 3838461407956

## Specifications

The result of our quality is maximum performance!

[Close](#)

[Close](#)



## Product description

standard Fixed castor with an overall height of 155 mm

Wheel diameter x width: 125 x 38 mm

Top plate with 4 mounting holes of 9 mm, mounting hole distance 80x60 mm and top plate outer dimensions: 105x85 mm

Wheel with roller bearing and solid polyamide wheel with hardness 70±5 Shore D.

### Approved and tested load capacity

Dynamic 250 kg

Static 310 kg

### Temperature range:

Continuous operation: -25 | +80°C

Short (10 min) exposure: -30 | +110°C

### Advantages of this High load easy start Fixed castor:

- ✓ wearout
- ✓ effort to keep rolling
- ✓ to turn

## LIV SYSTEMS standard Fixed castor + solid polyamide wheel Ø125 x W38mm for 250kg Prod ID: 40793

ID 40793: Castor overall height 155 mm | 4 mounting holes with distance 80x60 mm | Wheel with roller bearing and solid polyamide wheel with hardness 70±5 Shore D | High load easy start, low wearout, little effort to keep rolling, easy to turn

## Product information

- Article code 2-061-25V
- SKU 40793
- EAN 3838461407932

**Алматы** (7273)495-231  
**Ангарск** (3955)60-70-56  
**Архангельск** (8182)63-90-72  
**Астрахань** (8512)99-46-04  
**Барнаул** (3852)73-04-60  
**Белгород** (4722)40-23-64  
**Благовещенск** (4162)22-76-07  
**Брянск** (4832)59-03-52  
**Владивосток** (423)249-28-31  
**Владикавказ** (8672)28-90-48  
**Владимир** (4922)49-43-18  
**Волгоград** (844)278-03-48  
**Вологда** (8172)26-41-59  
**Воронеж** (473)204-51-73  
**Екатеринбург** (343)384-55-89

**Иваново** (4932)77-34-06  
**Ижевск** (3412)26-03-58  
**Иркутск** (395)279-98-46  
**Казань** (843)206-01-48  
**Калининград** (4012)72-03-81  
**Калуга** (4842)92-23-67  
**Кемерово** (3842)65-04-62  
**Киров** (8332)68-02-04  
**Коломна** (4966)23-41-49  
**Кострома** (4942)77-07-48  
**Краснодар** (861)203-40-90  
**Красноярск** (391)204-63-61  
**Курск** (4712)77-13-04  
**Курган** (3522)50-90-47  
**Липецк** (4742)52-20-81

**Магнитогорск** (3519)55-03-13  
**Москва** (495)268-04-70  
**Мурманск** (8152)59-64-93  
**Набережные Челны** (8552)20-53-41  
**Нижний Новгород** (831)429-08-12  
**Новокузнецк** (3843)20-46-81  
**Ноябрьск** (3496)41-32-12  
**Новосибирск** (383)227-86-73  
**Омск** (3812)21-46-40  
**Орел** (4862)44-53-42  
**Оренбург** (3532)37-68-04  
**Пенза** (8412)22-31-16  
**Петрозаводск** (8142)55-98-37  
**Псков** (8112)59-10-37  
**Пермь** (342)205-81-47

**Ростов-на-Дону** (863)308-18-15  
**Рязань** (4912)46-61-64  
**Самара** (846)206-03-16  
**Санкт-Петербург** (812)309-46-40  
**Саратов** (845)249-38-78  
**Севастополь** (8692)22-31-93  
**Саранск** (8342)22-96-24  
**Симферополь** (3652)67-13-56  
**Смоленск** (4812)29-41-54  
**Сочи** (862)225-72-31  
**Ставрополь** (8652)20-65-13  
**Сургут** (3462)77-98-35  
**Сыктывкар** (8212)25-95-17  
**Тамбов** (4752)50-40-97  
**Тверь** (4822)63-31-35

**Тольятти** (8482)63-91-07  
**Томск** (3822)98-41-53  
**Тула** (4872)33-79-87  
**Тюмень** (3452)66-21-18  
**Ульяновск** (8422)24-23-59  
**Улан-Удэ** (3012)59-97-51  
**Уфа** (347)229-48-12  
**Хабаровск** (4212)92-98-04  
**Чебоксары** (8352)28-53-07  
**Челябинск** (351)202-03-61  
**Череповец** (8202)49-02-64  
**Чита** (3022)38-34-83  
**Якутск** (4112)23-90-97  
**Ярославль** (4852)69-52-93

**Россия** +7(495)268-04-70

**Казахстан** +7(7172)727-132

**Киргизия** +996(312)96-26-47

<https://liv.nt-rt.ru/> || [vis@nt-rt.ru](mailto:vis@nt-rt.ru)