

Product description

heavy duty Swivel castor with an overall height of 205 mm

Wheel diameter x width: 160 x 50 mm

Top plate with 4 mounting holes of 11 mm, mounting hole distance 105x80 mm and top plate outer dimensions: 140x110 mm

Wheel with ball bearing and black rubber tyre with hardness 65 ° Shore A on cast iron.

Approved and tested load capacity

Dynamic 400 kg

Static 500 kg

Temperature range:

Continuous operation: -20 | +70°C

Short (10 min) exposure: -30 | +80°C

Advantages of this Customised floor transport Swivel castor:

- ✓ moving
- ✓ goods protected
- ✓ unfavourable environment

LIV SYSTEMS heavy duty Swivel castor + black rubber tyre Ø160 x W50mm for 400kg Prod ID: 55383

ID 55383: Castor overall height 205 mm | 4 mounting holes with distance 105x80 mm | Wheel with ball bearing and black rubber tyre with hardness 65 ° Shore A | Customised floor transport, silent moving, heavy goods protected, for unfavourable environment

Product information

- Article code 2-362 ISO
- SKU 55383
- EAN 3838461553837

Алматы (7273)495-231
Ангарск (3955)60-70-56
Архангельск (8182)63-90-72
Астрахань (8512)99-46-04
Барнаул (3852)73-04-60
Белгород (4722)40-23-64
Благовещенск (4162)22-76-07
Брянск (4832)59-03-52
Владивосток (423)249-28-31
Владикавказ (8672)28-90-48
Владимир (4922)49-43-18
Волгоград (844)278-03-48
Вологда (8172)26-41-59
Воронеж (473)204-51-73
Екатеринбург (343)384-55-89

Иваново (4932)77-34-06
Ижевск (3412)26-03-58
Иркутск (395)279-98-46
Казань (843)206-01-48
Калининград (4012)72-03-81
Калуга (4842)92-23-67
Кемерово (3842)65-04-62
Киров (8332)68-02-04
Коломна (4966)23-41-49
Кострома (4942)77-07-48
Краснодар (861)203-40-90
Красноярск (391)204-63-61
Курск (4712)77-13-04
Курган (3522)50-90-47
Липецк (4742)52-20-81

Россия +7(495)268-04-70

Магнитогорск (3519)55-03-13
Москва (495)268-04-70
Мурманск (8152)59-64-93
Набережные Челны (8552)20-53-41
Нижний Новгород (831)429-08-12
Новокузнецк (3843)20-46-81
Ноябрьск (3496)41-32-12
Новосибирск (383)227-86-73
Омск (3812)21-46-40
Орел (4862)44-53-42
Оренбург (3532)37-68-04
Пенза (8412)22-31-16
Петрозаводск (8142)55-98-37
Псков (8112)59-10-37
Пермь (342)205-81-47

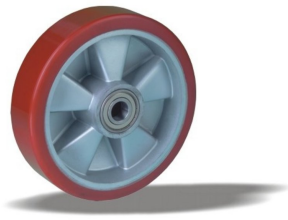
Казахстан +7(7172)727-132

Ростов-на-Дону (863)308-18-15
Рязань (4912)46-61-64
Самара (846)206-03-16
Санкт-Петербург (812)309-46-40
Саратов (845)249-38-78
Севастополь (8692)22-31-93
Саранск (8342)22-96-24
Симферополь (3652)67-13-56
Смоленск (4812)29-41-54
Сочи (862)225-72-31
Ставрополь (8652)20-65-13
Сургут (3462)77-98-35
Сыктывкар (8212)25-95-17
Тамбов (4752)50-40-97
Тверь (4822)63-31-35

Киргизия +996(312)96-26-47

Тольятти (8482)63-91-07
Томск (3822)98-41-53
Тула (4872)33-79-87
Тюмень (3452)66-21-18
Саратов (845)249-38-78
Ульяновск (8422)24-23-59
Улан-Удэ (3012)59-97-51
Уфа (347)229-48-12
Хабаровск (4212)92-98-04
Чебоксары (8352)28-53-07
Челябинск (351)202-03-61
Череповец (8202)49-02-64
Чита (3022)38-34-83
Якутск (4112)23-90-97
Ярославль (4852)69-52-93

<https://liv.nt-rt.ru/> || vis@nt-rt.ru



Product description

heavy duty Wheel with ball bearing and injection-moulded polyurethane tread with hardness 92 ° Shore A on aluminium

Wheel diameter x width: 160 x 50 mm

Axle hole: 20 mm

Hub length: 60 mm

Approved and tested load capacity

Dynamic 600 kg

Static 750 kg

Temperature range:

Continuous operation: -25 | -55°C

Short (10 min) exposure: -40 | +55°C

Advantages of this Indestructable footing wheel:

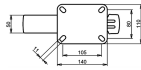
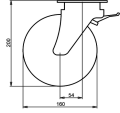
- ✓ burden transport
- ✓ resistance
- ✓ own weight

LIV SYSTEMS heavy duty wheel + injection-moulded polyurethane tread Ø160 x W50mm for 600kg Prod ID: 17840

ID 17840: heavy duty Wheel with ball bearing and injection-moulded polyurethane tread with hardness 92 ° Shore A on aluminium | Axle hole: 20 mm | Hub length: 60 mm | Indestructable footing, effortless burden transport, chemical resistance, low own weight

Product information

- Article code 2-120-32K
- SKU 17840
- EAN 3838461178405



Product description

heavy duty Swivel castor with brake with an overall height of 200 mm

Wheel diameter x width: 160 x 50 mm

Top plate with 4 mounting holes of 11 mm, mounting hole distance 105x80 mm and top plate outer dimensions: 140x110 mm

Wheel with ball bearing and solid polyamide wheel with hardness 70±5 Shore D

the double brake system, brakes the turning of the wheel and the swivel rotation.

Approved and tested load capacity

Dynamic 400 kg

Static 500 kg

Temperature range:

Continious operation: -25 | +80°C

Short (10 min) exposure: -30 | +110°C

Advantages of this High load easy start Swivel castor with brake:

- ✓ wearout
- ✓ effort to keep rolling
- ✓ to turn

LIV SYSTEMS heavy duty Swivel castor with brake + solid polyamide wheel Ø160 x W50mm for 400kg Prod ID: 42563

ID 42563: Castor overall height 200 mm | 4 mounting holes with distance 105x80 mm | Wheel with ball bearing and solid polyamide wheel with hardness 70±5 Shore D | The double brake system, brakes the turning of the wheel and the swivel rotation. | High lo

Product information

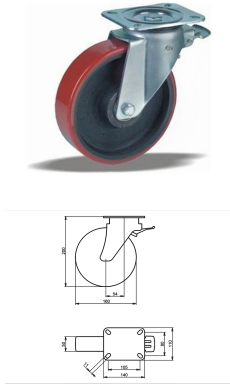
- Article code 2-063-32K
- SKU 42563
- EAN 3838461425639

Specifications

The result of our quality is maximum performance!

[Close](#)

[Close](#)



Product description

heavy duty Swivel castor with brake with an overall height of 200 mm

Wheel diameter x width: 160 x 50 mm

Top plate with 4 mounting holes of 11 mm, mounting hole distance 105x80 mm and top plate outer dimensions: 140x110 mm

Wheel with ball bearing and injection-moulded polyurethane tread with hardness 65 ° Shore A on cast iron
the double brake system, brakes the turning of the wheel and the swivel rotation.

Approved and tested load capacity

Dynamic 600 kg

Static 750 kg

Temperature range:

Continuous operation: -20 | +70°C

Short (10 min) exposure: -30 | +80°C

Advantages of this Gravity resisting Swivel castor with brake:

- ✓ high loads
- ✓ deformation when stationed
- ✓ by rough textures

LIV SYSTEMS heavy duty Swivel castor with brake + injection-moulded polyurethane tread Ø160 x W50mm for 600kg Prod ID: 42454

ID 42454: Castor overall height 200 mm | 4 mounting holes with distance 105x80 mm | Wheel with ball bearing and injection-moulded polyurethane tread with hardness 65 ° Shore A | The double brake system, brakes the turning of the wheel and the swivel rotat

Product information

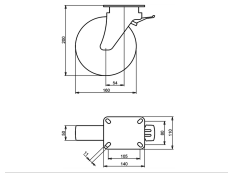
- Article code 2-143-32K
- SKU 42454
- EAN 3838461424540

Specifications

The result of our quality is maximum performance!

[Close](#)

[Close](#)



Product description

heavy duty Swivel castor with brake with an overall height of 200 mm

Wheel diameter x width: 160 x 50 mm

Top plate with 4 mounting holes of 11 mm, mounting hole distance 105x80 mm and top plate outer dimensions: 140x110 mm

Wheel with ball bearing and solid cast iron wheel with hardness 180-220 ° 180-220 HB

the double brake system, brakes the turning of the wheel and the swivel rotation.

Approved and tested load capacity

Dynamic 600 kg

Static 750 kg

Temperature range:

Continuous operation: -40 | +130°C

Short (10 min) exposure: -40 | +130°C

Advantages of this Heavyweight runner Swivel castor with brake:

- ✓ proof
- ✓ rolling resistance
- ✓ substantial temperature change

LIV SYSTEMS heavy duty Swivel castor with brake + solid cast iron wheel Ø160 x W50mm for 600kg Prod ID: 42525

ID 42525: Castor overall height 200 mm | 4 mounting holes with distance 105x80 mm | Wheel with ball bearing and solid cast iron wheel with hardness 180-220 ° 180-220 HB

| The double brake system, brakes the turning of the wheel and the swivel rotation. |

Product information

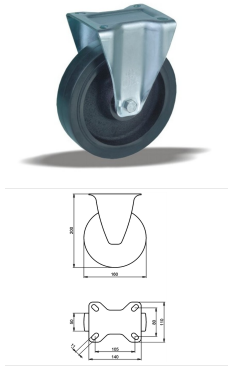
- Article code 2-153-32K
- SKU 42525
- EAN 3838461425257

Specifications

The result of our quality is maximum performance!

[Close](#)

[Close](#)



Product description

heavy duty Fixed castor with an overall height of 200 mm

Wheel diameter x width: 160 x 50 mm

Top plate with 4 mounting holes of 11 mm, mounting hole distance 105x80 mm and top plate outer dimensions: 140x110 mm

Wheel with ball bearing and black rubber tyre with hardness 65 ° Shore A on cast iron.

Approved and tested load capacity

Dynamic 500 kg

Static 620 kg

Temperature range:

Continuous operation: -20 | +70°C

Short (10 min) exposure: -30 | +80°C

Advantages of this Heavy floor convey Fixed castor:

- ✓ friendly
- ✓ surpassing obstacles
- ✓ loads smooth ride

LIV SYSTEMS heavy duty Fixed castor + black rubber tyre Ø160 x W50mm for 500kg Prod ID: 42423

ID 42423: Castor overall height 200 mm | 4 mounting holes with distance 105x80 mm | Wheel with ball bearing and black rubber tyre with hardness 65 ° Shore A | Heavy floor convey, floor friendly, easily surpassing obstacles, weightly loads smooth ride

Product information

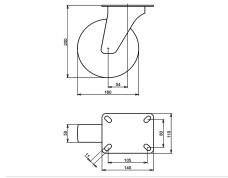
- Article code 2-131-32K
- SKU 42423
- EAN 3838461424236

Specifications

The result of our quality is maximum performance!

[Close](#)

[Close](#)



Product description

heavy duty Swivel castor with an overall height of 200 mm

Wheel diameter x width: 160 x 50 mm

Top plate with 4 mounting holes of 11 mm, mounting hole distance 105x80 mm and top plate outer dimensions: 140x110 mm

Wheel with ball bearing and injection-moulded polyurethane tread with hardness 92 ° Shore A on aluminium.

Approved and tested load capacity

Dynamic 600 kg

Static 750 kg

Temperature range:

Continuous operation: -25 | -55°C

Short (10 min) exposure: -40 | +55°C

Advantages of this Indestructable footing Swivel castor:

- ✓ burden transport
- ✓ resistance
- ✓ own weight

LIV SYSTEMS heavy duty Swivel castor + injection-moulded polyurethane tread Ø160 x W50mm for 600kg Prod ID: 42403

ID 42403: Castor overall height 200 mm | 4 mounting holes with distance 105x80 mm | Wheel with ball bearing and injection-moulded polyurethane tread with hardness 92 ° Shore A | Indestructable footing, effortless burden transport, chemical resistance, low

Product information

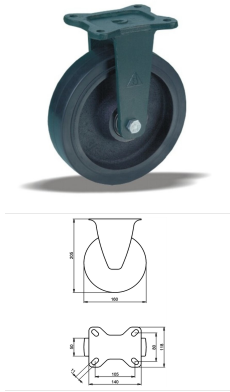
- Article code 2-122-32K
- SKU 42403
- EAN 3838461424038

Specifications

The result of our quality is maximum performance!

[Close](#)

[Close](#)



Product description

heavy duty Fixed castor with an overall height of 205 mm

Wheel diameter x width: 160 x 50 mm

Top plate with 4 mounting holes of 11 mm, mounting hole distance 105x80 mm and top plate outer dimensions: 140x118 mm

Wheel with ball bearing and black rubber tyre with hardness 65 ° Shore A on cast iron.

Approved and tested load capacity

Dynamic 400 kg

Static 500 kg

Temperature range:

Continuous operation: -20 | +70°C

Short (10 min) exposure: -30 | +80°C

Advantages of this Customised floor transport Fixed castor:

- ✓ moving
- ✓ goods protected
- ✓ unfavourable environment

LIV SYSTEMS heavy duty Fixed castor + black rubber tyre Ø160 x W50mm for 400kg Prod ID: 54623

ID 54623: Castor overall height 205 mm | 4 mounting holes with distance 105x80 mm | Wheel with ball bearing and black rubber tyre with hardness 65 ° Shore A | Customised floor transport, silent moving, heavy goods protected, for unfavourable environment

Product information

- Article code 2-361 ISO
- SKU 54623
- EAN 3838461546235

Specifications

The result of our quality is maximum performance!

[Close](#)

[Close](#)



Product description

heavy duty Wheel with ball bearing and solid cast iron wheel with hardness 180-220 ° 180-220 HB

Wheel diameter x width: 160 x 50 mm

Axle hole: 20 mm

Hub length: 60 mm

Approved and tested load capacity

Dynamic 900 kg

Static 1120 kg

Temperature range:

Continuous operation: -40 | +130°C

Short (10 min) exposure: -40 | +130°C

Advantages of this Heavyweight runner wheel:

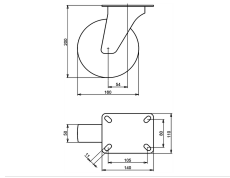
- ✓ proof
- ✓ rolling resistance
- ✓ substantial temperature change

LIV SYSTEMS heavy duty wheel + solid cast iron wheel Ø160 x W50mm for 900kg Prod ID: 35554

ID 35554: heavy duty Wheel with ball bearing and solid cast iron wheel with hardness 180-220 ° 180-220 HB | Axle hole: 20 mm | Hub length: 60 mm | Heavyweight runner, wareout proof, low rolling resistance, for substantial temperature change

Product information

- Article code 2-150-32K
- SKU 35554
- EAN 3838461355547



Product description

heavy duty Swivel castor with an overall height of 200 mm

Wheel diameter x width: 160 x 50 mm

Top plate with 4 mounting holes of 11 mm, mounting hole distance 105x80 mm and top plate outer dimensions: 140x110 mm

Wheel with ball bearing and black rubber tyre with hardness 65 ° Shore A on cast iron.

Approved and tested load capacity

Dynamic 500 kg

Static 620 kg

Temperature range:

Continuous operation: -20 | +70°C

Short (10 min) exposure: -30 | +80°C

Advantages of this Heavy floor convey Swivel castor:

- ✓ friendly
- ✓ surpassing obstacles
- ✓ loads smooth ride

LIV SYSTEMS heavy duty Swivel castor + black rubber tyre Ø160 x W50mm for 500kg Prod ID: 42425

ID 42425: Castor overall height 200 mm | 4 mounting holes with distance 105x80 mm | Wheel with ball bearing and black rubber tyre with hardness 65 ° Shore A | Heavy floor convey, floor friendly, easily surpassing obstacles, weightly loads smooth ride

Product information

- Article code 2-132-32K
- SKU 42425
- EAN 3838461424250

Specifications

The result of our quality is maximum performance!

[Close](#)

[Close](#)



Product description

heavy duty Swivel castor with brake with an overall height of 200 mm

Wheel diameter x width: 160 x 50 mm

Top plate with 4 mounting holes of 11 mm, mounting hole distance 105x80 mm and top plate outer dimensions: 140x110 mm

Wheel with ball bearing and injection-moulded polyurethane tread with hardness 92 ° Shore A on aluminium the double brake system, brakes the turning of the wheel and the swivel rotation.

Approved and tested load capacity

Dynamic 600 kg

Static 750 kg

Temperature range:

Continuous operation: -25 | -55°C

Short (10 min) exposure: -40 | +55°C

Advantages of this Indestructable footing Swivel castor with brake:

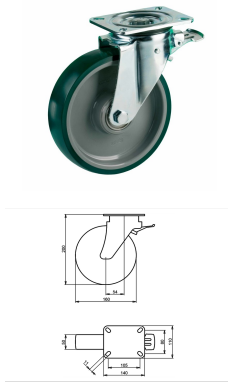
- ✓ burden transport
- ✓ resistance
- ✓ own weight

LIV SYSTEMS heavy duty Swivel castor with brake + injection-moulded polyurethane tread Ø160 x W50mm for 600kg Prod ID: 42414

ID 42414: Castor overall height 200 mm | 4 mounting holes with distance 105x80 mm | Wheel with ball bearing and injection-moulded polyurethane tread with hardness 92 ° Shore A | The double brake system, brakes the turning of the wheel and the swivel rotat

Product information

- 
- Article code 2-123-32K
 - SKU 42414
 - EAN 3838461424144



Product description

heavy duty Swivel castor with brake with an overall height of 200 mm

Wheel diameter x width: 160 x 50 mm

Top plate with 4 mounting holes of 11 mm, mounting hole distance 105x80 mm and top plate outer dimensions: 140x110 mm

Wheel with ball bearing and injection-moulded polyurethane tread with hardness 92 ° Shore A on polyamide

the double brake system, brakes the turning of the wheel and the swivel rotation.

Approved and tested load capacity

Dynamic 400 kg

Static 500 kg

Temperature range:

Continuous operation: -25 | +55°C

Short (10 min) exposure: -30 | +55°C

Advantages of this Power ride Swivel castor with brake:

- ✓ chemical resistance
- ✓ surface pressure
- ✓ force to start

LIV SYSTEMS heavy duty Swivel castor with brake + injection-moulded polyurethane tread Ø160 x W50mm for 400kg Prod ID: 42475

ID 42475: Castor overall height 200 mm | 4 mounting holes with distance 105x80 mm | Wheel with ball bearing and injection-moulded polyurethane tread with hardness 92 ° Shore A | The double brake system, brakes the turning of the wheel and the swivel rota

Product information

- Article code 2-083-32K
- SKU 42475
- EAN 3838461424755

Specifications

The result of our quality is maximum performance!

[Close](#)

[Close](#)



Product description

heavy duty Wheel with ball bearing and solid polyamide wheel with hardness 70 ± 5 Shore D

Wheel diameter x width: 160 x 50 mm

Axle hole: 20 mm

Hub length: 60 mm

Approved and tested load capacity

Dynamic 400 kg

Static 500 kg

Temperature range:

Continuous operation: -25 | $+80^{\circ}\text{C}$

Short (10 min) exposure: -30 | $+110^{\circ}\text{C}$

Advantages of this High load easy start wheel:

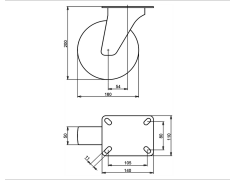
- ✓ wearout
- ✓ effort to keep rolling
- ✓ to turn

LIV SYSTEMS heavy duty wheel + solid polyamide wheel $\text{Ø}160$ x W50mm for 400kg Prod ID: 35595

ID 35595: heavy duty Wheel with ball bearing and solid polyamide wheel with hardness 70 ± 5 Shore D | Axle hole: 20 mm | Hub length: 60 mm | High load easy start, low wearout, little effort to keep rolling, easy to turn

Product information

- Article code 2-278 ISO
- SKU 35595
- EAN 3838461355950



Product description

heavy duty Swivel castor with an overall height of 200 mm

Wheel diameter x width: 160 x 50 mm

Top plate with 4 mounting holes of 11 mm, mounting hole distance 105x80 mm and top plate outer dimensions: 140x110 mm

Wheel with ball bearing and solid cast iron wheel with hardness 180-220 ° 180-220 HB.

Approved and tested load capacity

Dynamic 600 kg

Static 750 kg

Temperature range:

Continuous operation: -40 | +130°C

Short (10 min) exposure: -40 | +130°C

Advantages of this Heavyweight runner Swivel castor:

- ✓ proof
- ✓ rolling resistance
- ✓ substantial temperature change

LIV SYSTEMS heavy duty Swivel castor + solid cast iron wheel Ø160 x W50mm for 600kg Prod ID: 56392

ID 56392: Castor overall height 200 mm | 4 mounting holes with distance 105x80 mm | Wheel with ball bearing and solid cast iron wheel with hardness 180-220 ° 180-220 HB
| Heavyweight runner, wareout proof, low rolling resistance, for substantial temperatu

Product information

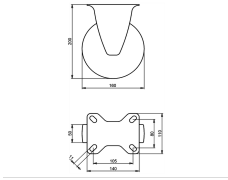
- Article code 2-152-32K
- SKU 56392
- EAN 3838461563928

Specifications

The result of our quality is maximum performance!

[Close](#)

[Close](#)



Product description

heavy duty Fixed castor with an overall height of 200 mm

Wheel diameter x width: 160 x 50 mm

Top plate with 4 mounting holes of 11 mm, mounting hole distance 105x80 mm and top plate outer dimensions: 140x110 mm

Wheel with ball bearing and solid cast iron wheel with hardness 65 ° Shore A.

Approved and tested load capacity

Dynamic 600 kg

Static 750 kg

Temperature range:

Continuous operation: -40 | +130°C

Short (10 min) exposure: -40 | +130°C

Advantages of this Heavyweight runner Fixed castor:

- ✓ proof
- ✓ rolling resistance
- ✓ substantial temperature change

LIV SYSTEMS heavy duty Fixed castor + solid cast iron wheel Ø160 x W50mm for 600kg Prod ID: 56394

ID 56394: Castor overall height 200 mm | 4 mounting holes with distance 105x80 mm | Wheel with ball bearing and solid cast iron wheel with hardness 65 ° Shore A | Heavyweight runner, wareout proof, low rolling resistance, for substantial temperature chang

Product information

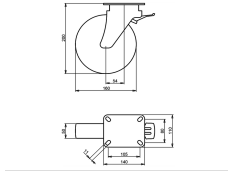
- Article code 2-151-32K
- SKU 56394
- EAN 3838461563942

Specifications

The result of our quality is maximum performance!

[Close](#)

[Close](#)



Product description

heavy duty Swivel castor with brake with an overall height of 200 mm

Wheel diameter x width: 160 x 50 mm

Top plate with 4 mounting holes of 11 mm, mounting hole distance 105x80 mm and top plate outer dimensions: 140x110 mm

Wheel with ball bearing and black rubber tyre with hardness 65 ° Shore A on cast iron

the double brake system, brakes the turning of the wheel and the swivel rotation.

Approved and tested load capacity

Dynamic 500 kg

Static 620 kg

Temperature range:

Continuous operation: -20 | +70°C

Short (10 min) exposure: -30 | +80°C

Advantages of this Heavy floor convey Swivel castor with brake:

- ✓ friendly
- ✓ surpassing obstacles
- ✓ loads smooth ride

LIV SYSTEMS heavy duty Swivel castor with brake + black rubber tyre Ø160 x W50mm for 500kg Prod ID: 42434

ID 42434: Castor overall height 200 mm | 4 mounting holes with distance 105x80 mm | Wheel with ball bearing and black rubber tyre with hardness 65 ° Shore A | The double brake system, brakes the turning of the wheel and the swivel rotation. | Heavy floor

Product information

- Article code 2-133-32K
- SKU 42434
- EAN 3838461424342

Specifications

The result of our quality is maximum performance!

[Close](#)

[Close](#)



Product description

heavy duty Wheel with ball bearing and black rubber tyre with hardness 92 ° Shore A on aluminium

Wheel diameter x width: 160 x 50 mm

Axle hole: 20 mm

Hub length: 60 mm

Approved and tested load capacity

Dynamic 400 kg

Static 500 kg

Temperature range:

Continuous operation: -20 | +70°C

Short (10 min) exposure: -30 | +80°C

Advantages of this Firm and soft way wheel:

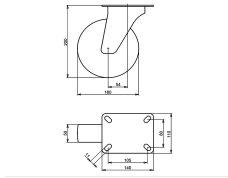
- ✓ moving of goods
- ✓ for uneven floor
- ✓ weight capacity

LIV SYSTEMS heavy duty wheel + black rubber tyre Ø160 x W50mm for 400kg Prod ID: 42514

ID 42514: heavy duty Wheel with ball bearing and black rubber tyre with hardness 92 ° Shore A on aluminium | Axle hole: 20 mm | Hub length: 60 mm | Firm and soft way, quite moving of goods, made for uneven floor, high weight capacity

Product information

- Article code 2-110-32K
- SKU 42514
- EAN 3838461425141



Product description

heavy duty Swivel castor with an overall height of 200 mm

Wheel diameter x width: 160 x 50 mm

Top plate with 4 mounting holes of 11 mm, mounting hole distance 105x80 mm and top plate outer dimensions: 140x110 mm

Wheel with ball bearing and injection-moulded polyurethane tread with hardness 92 ° Shore A on polyamide.

Approved and tested load capacity

Dynamic 400 kg

Static 500 kg

Temperature range:

Continuous operation: -25 | +55°C

Short (10 min) exposure: -30 | +55°C

Advantages of this Power ride Swivel castor:

- ✓ chemical resistance
- ✓ surface pressure
- ✓ force to start

LIV SYSTEMS heavy duty Swivel castor + injection-moulded polyurethane tread Ø160 x W50mm for 400kg Prod ID: 42474

ID 42474: Castor overall height 200 mm | 4 mounting holes with distance 105x80 mm | Wheel with ball bearing and injection-moulded polyurethane tread with hardness 92 ° Shore A | Power ride, wide chemical resistance, small surface pressure, low force to start

Product information

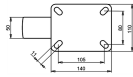
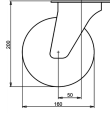
- Article code 2-082-32K
- SKU 42474
- EAN 3838461424748

Specifications

The result of our quality is maximum performance!

[Close](#)

[Close](#)



Product description

heavy duty Swivel castor with an overall height of 200 mm

Wheel diameter x width: 160 x 50 mm

Top plate with 4 mounting holes of 11 mm, mounting hole distance 105x80 mm and top plate outer dimensions: 140x110 mm

Wheel with ball bearing and solid polyamide wheel with hardness 70±5 Shore D.

Approved and tested load capacity

Dynamic 400 kg

Static 500 kg

Temperature range:

Continuous operation: -25 | +80°C

Short (10 min) exposure: -30 | +110°C

Advantages of this High load easy start Swivel castor:

- ✓ wearout
- ✓ effort to keep rolling
- ✓ to turn

LIV SYSTEMS heavy duty Swivel castor + solid polyamide wheel Ø160 x W50mm for 400kg Prod ID: 31774

ID 31774: Castor overall height 200 mm | 4 mounting holes with distance 105x80 mm | Wheel with ball bearing and solid polyamide wheel with hardness 70±5 Shore D | High load easy start, low wearout, little effort to keep rolling, easy to turn

Product information

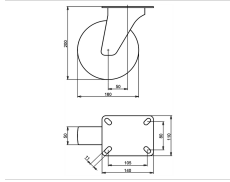
- Article code 2-394 ISO
- SKU 31774
- EAN 3838461317743

Specifications

The result of our quality is maximum performance!

[Close](#)

[Close](#)



Product description

heavy duty Swivel castor with an overall height of 200 mm

Wheel diameter x width: 160 x 50 mm

Top plate with 4 mounting holes of 11 mm, mounting hole distance 105x80 mm and top plate outer dimensions: 140x110 mm

Wheel with ball bearing and solid polyamide wheel with hardness 70±5 Shore D.

Approved and tested load capacity

Dynamic 400 kg

Static 500 kg

Temperature range:

Continuous operation: -25 | +80°C

Short (10 min) exposure: -30 | +110°C

Advantages of this High load easy start Swivel castor:

- ✓ wearout
- ✓ effort to keep rolling
- ✓ to turn

LIV SYSTEMS heavy duty Swivel castor + solid polyamide wheel Ø160 x W50mm for 400kg Prod ID: 55381

ID 55381: Castor overall height 200 mm | 4 mounting holes with distance 105x80 mm | Wheel with ball bearing and solid polyamide wheel with hardness 70±5 Shore D | High load easy start, low wearout, little effort to keep rolling, easy to turn

Product information

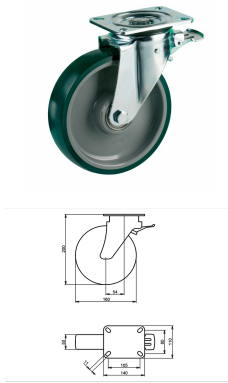
- Article code 2-394 ISO
- SKU 55381
- EAN 3838461553813

Specifications

The result of our quality is maximum performance!

[Close](#)

[Close](#)



Product description

heavy duty Swivel castor with brake with an overall height of 200 mm

Wheel diameter x width: 160 x 50 mm

Top plate with 4 mounting holes of 11 mm, mounting hole distance 105x80 mm and top plate outer dimensions: 140x110 mm

Wheel with roller bearing and injection-moulded polyurethane tread with hardness 92 ° Shore A on polyamide

the double brake system, brakes the turning of the wheel and the swivel rotation.

Approved and tested load capacity

Dynamic 400 kg

Static 500 kg

Temperature range:

Continuous operation: -25 | +55°C

Short (10 min) exposure: -30 | +55°C

Advantages of this Power ride Swivel castor with brake:

- ✓ chemical resistance
- ✓ surface pressure
- ✓ force to start

LIV SYSTEMS heavy duty Swivel castor with brake + injection-moulded polyurethane tread Ø160 x W50mm for 400kg Prod ID: 42603

ID 42603: Castor overall height 200 mm | 4 mounting holes with distance 105x80 mm | Wheel with roller bearing and injection-moulded polyurethane tread with hardness 92 ° Shore A | The double brake system, brakes the turning of the wheel and the swivel ro

Product information

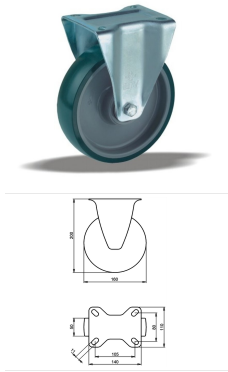
- Article code 2-083-32V
- SKU 42603
- EAN 3838461426032

Specifications

The result of our quality is maximum performance!

[Close](#)

[Close](#)



Product description

heavy duty Fixed castor with an overall height of 200 mm

Wheel diameter x width: 160 x 50 mm

Top plate with 4 mounting holes of 11 mm, mounting hole distance 105x80 mm and top plate outer dimensions: 140x110 mm

Wheel with ball bearing and injection-moulded polyurethane tread with hardness 92 ° Shore A on polyamide.

Approved and tested load capacity

Dynamic 400 kg

Static 500 kg

Temperature range:

Continuous operation: -25 | +55°C

Short (10 min) exposure: -30 | +55°C

Advantages of this Power ride Fixed castor:

- ✓ chemical resistance
- ✓ surface pressure
- ✓ force to start

LIV SYSTEMS heavy duty Fixed castor + injection-moulded polyurethane tread Ø160 x W50mm for 400kg Prod ID: 42615

ID 42615: Castor overall height 200 mm | 4 mounting holes with distance 105x80 mm | Wheel with ball bearing and injection-moulded polyurethane tread with hardness 92 ° Shore A | Power ride, wide chemical resistance, small surface pressure, low force to start

Product information

- Article code 2-081-32K
- SKU 42615
- EAN 3838461426155

Specifications

The result of our quality is maximum performance!

[Close](#)

[Close](#)



Product description

heavy duty Fixed castor with an overall height of 200 mm

Wheel diameter x width: 160 x 44 mm

Top plate with 4 mounting holes of 11 mm, mounting hole distance 105x80 mm and top plate outer dimensions: 140x110 mm

Wheel with plain bearing and solid polyamide wheel with hardness 70±5 Shore D.

Approved and tested load capacity

Dynamic 400 kg

Static 500 kg

Temperature range:

Continuous operation: -25 | +80°C

Short (10 min) exposure: -30 | +110°C

Advantages of this High load easy start Fixed castor:

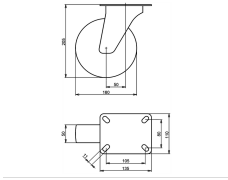
- ✓ wearout
- ✓ effort to keep rolling
- ✓ to turn

LIV SYSTEMS heavy duty Fixed castor + solid polyamide wheel Ø160 x W44mm for 400kg Prod ID: 31795

ID 31795: Castor overall height 200 mm | 4 mounting holes with distance 105x80 mm | Wheel with plain bearing and solid polyamide wheel with hardness 70±5 Shore D | High load easy start, low wearout, little effort to keep rolling, easy to turn

Product information

- Article code 2-735 ISO
- SKU 31795
- EAN 3838461317958



Product description

heavy duty Swivel castor with an overall height of 205 mm

Wheel diameter x width: 160 x 50 mm

Top plate with 4 mounting holes of 11 mm, mounting hole distance 105x80 mm and top plate outer dimensions: 135x110 mm

Wheel with ball bearing and solid cast iron wheel with hardness 180-220 ° 180-220 HB.

Approved and tested load capacity

Dynamic 900 kg

Static 1120 kg

Temperature range:

Continuous operation: -40 | +130°C

Short (10 min) exposure: -40 | +130°C

Advantages of this titanic move Swivel castor:

- ✓ high and low temperatures
- ✓ robust handling
- ✓ proof

LIV SYSTEMS heavy duty Swivel castor + solid cast iron wheel Ø160 x W50mm for 900kg Prod ID: 56198

ID 56198: Castor overall height 205 mm | 4 mounting holes with distance 105x80 mm | Wheel with ball bearing and solid cast iron wheel with hardness 180-220 ° 180-220 HB | titanic move, for high and low temperatures, for robust handling, damage proof

Product information

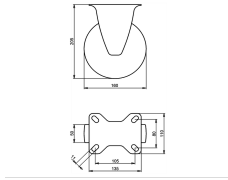
- Article code 2-336 ISO
- SKU 56198
- EAN 3838461561986

Specifications

The result of our quality is maximum performance!

[Close](#)

[Close](#)



Product description

heavy duty Fixed castor with an overall height of 205 mm

Wheel diameter x width: 160 x 50 mm

Top plate with 4 mounting holes of 11 mm, mounting hole distance 105X80 mm and top plate outer dimensions: 135X110 mm

Wheel with ball bearing and solid cast iron wheel with hardness 180-220 ° 180-220 HB.

Approved and tested load capacity

Dynamic 900 kg

Static 1120 kg

Temperature range:

Continuous operation: -40 | +130°C

Short (10 min) exposure: -40 | +130°C

Advantages of this titanic move Fixed castor:

- ✓ high and low temperatures
- ✓ robust handling
- ✓ proof

LIV SYSTEMS heavy duty Fixed castor + solid cast iron wheel Ø160 x W50mm for 900kg Prod ID: 56199

ID 56199: Castor overall height 205 mm | 4 mounting holes with distance 105X80 mm | Wheel with ball bearing and solid cast iron wheel with hardness 180-220 ° 180-220 HB | titanic move, for high and low temperatures, for robust handling, damage proof

Product information

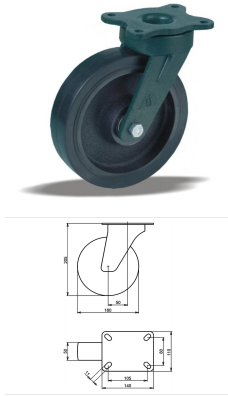
- Article code 2-356 ISO
- SKU 56199
- EAN 3838461561993

Specifications

The result of our quality is maximum performance!

[Close](#)

[Close](#)



Product description

heavy duty Swivel castor with an overall height of 205 mm

Wheel diameter x width: 160 x 50 mm

Top plate with 4 mounting holes of 11 mm, mounting hole distance 105x80 mm and top plate outer dimensions: 140x110 mm

Wheel with ball bearing and injection-moulded polyurethane tread with hardness 92 ° Shore A on cast iron.

Approved and tested load capacity

Dynamic 600 kg

Static 750 kg

Temperature range:

Continuous operation: -20 | +70°C

Short (10 min) exposure: -30 | +80°C

Advantages of this Eternal moving Swivel castor:

- ✓ losing shape being stationed
- ✓ to push
- ✓ for grainy floors

LIV SYSTEMS heavy duty Swivel castor + injection-moulded polyurethane tread Ø160 x W50mm for 600kg Prod ID: 60999

ID 60999: Castor overall height 205 mm | 4 mounting holes with distance 105x80 mm | Wheel with ball bearing and injection-moulded polyurethane tread with hardness 92 ° Shore A | Eternal moving, not losing shape being stationed, easy to push, perfect for

Product information

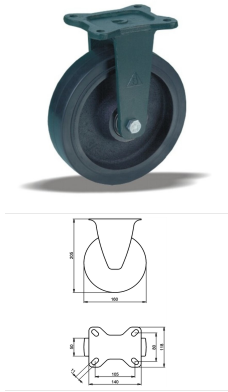
- Article code 2-322 ISO
- SKU 60999
- EAN 3838461609992

Specifications

The result of our quality is maximum performance!

[Close](#)

[Close](#)



Product description

heavy duty Fixed castor with an overall height of 205 mm

Wheel diameter x width: 160 x 50 mm

Top plate with 4 mounting holes of 11 mm, mounting hole distance 105x80 mm and top plate outer dimensions: 140x118 mm

Wheel with ball bearing and injection-moulded polyurethane tread with hardness 92 ° Shore A on cast iron.

Approved and tested load capacity

Dynamic 600 kg

Static 750 kg

Temperature range:

Continuous operation: -20 | +70°C

Short (10 min) exposure: -30 | +80°C

Advantages of this Eternal moving Fixed castor:

- ✓ losing shape being stationed
- ✓ to push
- ✓ for grainy floors

LIV SYSTEMS heavy duty Fixed castor + injection-moulded polyurethane tread Ø160 x W50mm for 600kg Prod ID: 61000

ID 61000: Castor overall height 205 mm | 4 mounting holes with distance 105x80 mm | Wheel with ball bearing and injection-moulded polyurethane tread with hardness 92 ° Shore A | Eternal moving, not losing shape being stationed, easy to push, perfect for

Product information

- Article code 2-321 ISO
- SKU 61000
- EAN 3838461610004

Specifications

The result of our quality is maximum performance!

[Close](#)

[Close](#)



Product description

heavy duty Wheel with ball bearing and injection-moulded polyurethane tread with hardness 92 ° Shore A on cast iron

Wheel diameter x width: 160 x 50 mm

Axle hole: 20 mm

Hub length: 60 mm

Approved and tested load capacity

Dynamic 850 kg

Static 1060 kg

Temperature range:

Continuous operation: -25 | -55°C

Short (10 min) exposure: -40 | +55°C

Advantages of this Gravity resisting wheel:

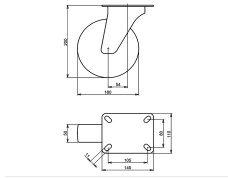
- ✓ high loads
- ✓ deformation when long stationed
- ✓ by rough textures

LIV SYSTEMS heavy duty wheel + injection-moulded polyurethane tread Ø160 x W50mm for 850kg Prod ID: 42503

ID 42503: heavy duty Wheel with ball bearing and injection-moulded polyurethane tread with hardness 92 ° Shore A on cast iron | Axle hole: 20 mm | Hub length: 60 mm | Gravity resisting, extremely high loads, no deformation when long stationed, untact by rou

Product information

- Article code 2-140-32K
- SKU 42503
- EAN 3838461425035



Product description

heavy duty Swivel castor with an overall height of 200 mm

Wheel diameter x width: 160 x 50 mm

Top plate with 4 mounting holes of 11 mm, mounting hole distance 105x80 mm and top plate outer dimensions: 140x110 mm

Wheel with ball bearing and injection-moulded polyurethane tread with hardness 65 ° Shore A on cast iron.

Approved and tested load capacity

Dynamic 600 kg

Static 750 kg

Temperature range:

Continuous operation: -20 | +70°C

Short (10 min) exposure: -30 | +80°C

Advantages of this Gravity resisting Swivel castor:

- ✓ high loads
- ✓ deformation when stationed
- ✓ by rough textures

LIV SYSTEMS heavy duty Swivel castor + injection-moulded polyurethane tread Ø160 x W50mm for 600kg Prod ID: 42445

ID 42445: Castor overall height 200 mm | 4 mounting holes with distance 105x80 mm | Wheel with ball bearing and injection-moulded polyurethane tread with hardness 65 ° Shore A | Gravity resisting, extremely high loads, no deformation when stationed, uncontact

Product information

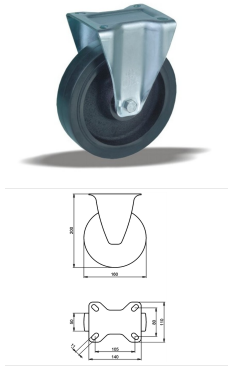
- Article code 2-142-32K
- SKU 42445
- EAN 3838461424458

Specifications

The result of our quality is maximum performance!

[Close](#)

[Close](#)



Product description

heavy duty Fixed castor with an overall height of 200 mm

Wheel diameter x width: 160 x 50 mm

Top plate with 4 mounting holes of 11 mm, mounting hole distance 105x80 mm and top plate outer dimensions: 140x110 mm

Wheel with ball bearing and injection-moulded polyurethane tread with hardness 65 ° Shore A on cast iron.

Approved and tested load capacity

Dynamic 600 kg

Static 750 kg

Temperature range:

Continuous operation: -20 | +70°C

Short (10 min) exposure: -30 | +80°C

Advantages of this Gravity resisting Fixed castor:

- ✓ high loads
- ✓ deformation when stationed
- ✓ by rough textures

LIV SYSTEMS heavy duty Fixed castor + injection-moulded polyurethane tread Ø160 x W50mm for 600kg Prod ID: 42443

ID 42443: Castor overall height 200 mm | 4 mounting holes with distance 105x80 mm | Wheel with ball bearing and injection-moulded polyurethane tread with hardness 65 ° Shore A | Gravity resisting, extremely high loads, no deformation when stationed, untract

Product information

- Article code 2-141-32K
- SKU 42443
- EAN 3838461424434

Specifications

The result of our quality is maximum performance!

[Close](#)

[Close](#)



Product description

heavy duty Wheel with ball bearing and black rubber tyre with hardness 92 ° Shore A on cast iron

Wheel diameter x width: 160 x 50 mm

Axle hole: 20 mm

Hub length: 60 mm

Approved and tested load capacity

Dynamic 500 kg

Static 620 kg

Temperature range:

Continuous operation: -20 | +70°C

Short (10 min) exposure: -30 | +80°C

Advantages of this Heavy floor convey wheel:

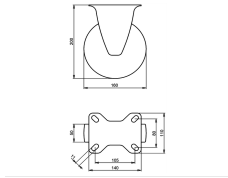
- ✓ friendly
- ✓ surpassing obstacles
- ✓ loads smooth ride

LIV SYSTEMS heavy duty wheel + black rubber tyre Ø160 x W50mm for 500kg Prod ID: 42505

ID 42505: heavy duty Wheel with ball bearing and black rubber tyre with hardness 92 ° Shore A on cast iron | Axle hole: 20 mm | Hub length: 60 mm | Heavy floor convey, floor friendly, easily surpassing obstacles, weightly loads smooth ride

Product information

- Article code 2-130-32K
- SKU 42505
- EAN 3838461425059



Product description

heavy duty Fixed castor with an overall height of 200 mm

Wheel diameter x width: 160 x 50 mm

Top plate with 4 mounting holes of 11 mm, mounting hole distance 105x80 mm and top plate outer dimensions: 140x110 mm

Wheel with ball bearing and injection-moulded polyurethane tread with hardness 92 ° Shore A on aluminium.

Approved and tested load capacity

Dynamic 600 kg

Static 750 kg

Temperature range:

Continuous operation: -25 | -55°C

Short (10 min) exposure: -40 | +55°C

Advantages of this Indestructable footing Fixed castor:

- ✓ burden transport
- ✓ resistance
- ✓ own weight

LIV SYSTEMS heavy duty Fixed castor + injection-moulded polyurethane tread Ø160 x W50mm for 600kg Prod ID: 42385

ID 42385: Castor overall height 200 mm | 4 mounting holes with distance 105x80 mm | Wheel with ball bearing and injection-moulded polyurethane tread with hardness 92 ° Shore A | Indestructable footing, effortless burden transport, chemical resistance, low

Product information

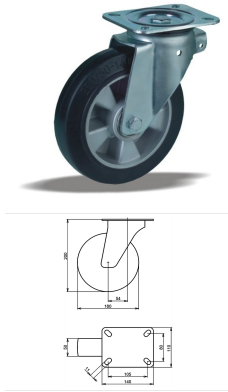
- Article code 2-121-32K
- SKU 42385
- EAN 3838461423857

Specifications

The result of our quality is maximum performance!

[Close](#)

[Close](#)



Product description

heavy duty Swivel castor with an overall height of 200 mm

Wheel diameter x width: 160 x 50 mm

Top plate with 4 mounting holes of 11 mm, mounting hole distance 105x80 mm and top plate outer dimensions: 140x110 mm

Wheel with ball bearing and black rubber tyre with hardness 65 ° Shore A on aluminium.

Approved and tested load capacity

Dynamic 400 kg

Static 500 kg

Temperature range:

Continuous operation: -20 | +70°C

Short (10 min) exposure: -30 | +80°C

Advantages of this Firm and soft way Swivel castor:

- ✓ moving of goods
- ✓ for uneven floor
- ✓ weight capacity

LIV SYSTEMS heavy duty Swivel castor + black rubber tyre Ø160 x W50mm for 400kg Prod ID: 42364

ID 42364: Castor overall height 200 mm | 4 mounting holes with distance 105x80 mm | Wheel with ball bearing and black rubber tyre with hardness 65 ° Shore A | Firm and soft way, quite moving of goods, made for uneven floor, high weight capacity

Product information

- Article code 2-112-32K
- SKU 42364
- EAN 3838461423642

Specifications

The result of our quality is maximum performance!

[Close](#)

[Close](#)



Product description

heavy duty Swivel castor with brake with an overall height of 200 mm

Wheel diameter x width: 160 x 50 mm

Top plate with 4 mounting holes of 11 mm, mounting hole distance 105x80 mm and top plate outer dimensions: 140x110 mm

Wheel with ball bearing and black rubber tyre with hardness 65 ° Shore A on aluminium
the double brake system, brakes the turning of the wheel and the swivel rotation.

Approved and tested load capacity

Dynamic 400 kg

Static 500 kg

Temperature range:

Continuous operation: -20 | +70°C

Short (10 min) exposure: -30 | +80°C

Advantages of this Firm and soft way Swivel castor with brake:

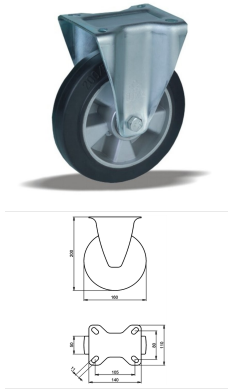
- ✓ moving of goods
- ✓ for uneven floor
- ✓ weight capacity

LIV SYSTEMS heavy duty Swivel castor with brake + black rubber tyre Ø160 x W50mm for 400kg Prod ID: 42374

ID 42374: Castor overall height 200 mm | 4 mounting holes with distance 105x80 mm | Wheel with ball bearing and black rubber tyre with hardness 65 ° Shore A | The double brake system, brakes the turning of the wheel and the swivel rotation. | Firm and so

Product information

- 
- Article code 2-113-32K
 - SKU 42374
 - EAN 3838461423741



Product description

heavy duty Fixed castor with an overall height of 200 mm

Wheel diameter x width: 160 x 50 mm

Top plate with 4 mounting holes of 11 mm, mounting hole distance 105x80 mm and top plate outer dimensions: 140x110 mm

Wheel with ball bearing and black rubber tyre with hardness 65 ° Shore A on aluminium.

Approved and tested load capacity

Dynamic 400 kg

Static 500 kg

Temperature range:

Continuous operation: -20 | +70°C

Short (10 min) exposure: -30 | +80°C

Advantages of this Firm and soft way Fixed castor:

- ✓ moving of goods
- ✓ for uneven floor
- ✓ weight capacity

LIV SYSTEMS heavy duty Fixed castor + black rubber tyre Ø160 x W50mm for 400kg Prod ID: 42354

ID 42354: Castor overall height 200 mm | 4 mounting holes with distance 105x80 mm | Wheel with ball bearing and black rubber tyre with hardness 65 ° Shore A | Firm and soft way, quite moving of goods, made for uneven floor, high weight capacity

Product information

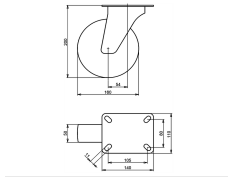
- Article code 2-111-32K
- SKU 42354
- EAN 3838461423543

Specifications

The result of our quality is maximum performance!

[Close](#)

[Close](#)



Product description

heavy duty Swivel castor with an overall height of 200 mm

Wheel diameter x width: 160 x 50 mm

Top plate with 4 mounting holes of 11 mm, mounting hole distance 105x80 mm and top plate outer dimensions: 140x110 mm

Wheel with plain bearing and injection-moulded polyurethane tread with hardness 92 ° Shore A on polyamide.

Approved and tested load capacity

Dynamic 400 kg

Static 500 kg

Temperature range:

Continuous operation: -25 | +55°C

Short (10 min) exposure: -30 | +55°C

Advantages of this Power ride Swivel castor:

- ✓ chemical resistance
- ✓ surface pressure
- ✓ force to start

LIV SYSTEMS heavy duty Swivel castor + injection-moulded polyurethane tread Ø160 x W50mm for 400kg Prod ID: 42585

ID 42585: Castor overall height 200 mm | 4 mounting holes with distance 105x80 mm | Wheel with plain bearing and injection-moulded polyurethane tread with hardness 92 ° Shore A | Power ride, wide chemical resistance, small surface pressure, low force to

Product information

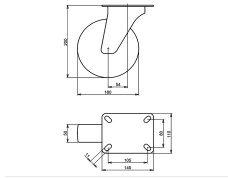
- Article code 2-082-32D
- SKU 42585
- EAN 3838461425851

Specifications

The result of our quality is maximum performance!

[Close](#)

[Close](#)



Product description

heavy duty Swivel castor with an overall height of 200 mm

Wheel diameter x width: 160 x 50 mm

Top plate with 4 mounting holes of 11 mm, mounting hole distance 105x80 mm and top plate outer dimensions: 140x110 mm

Wheel with roller bearing and injection-moulded polyurethane tread with hardness 92 ° Shore A on polyamide.

Approved and tested load capacity

Dynamic 400 kg

Static 500 kg

Temperature range:

Continuous operation: -25 | +55°C

Short (10 min) exposure: -30 | +55°C

Advantages of this Power ride Swivel castor:

- ✓ chemical resistance
- ✓ surface pressure
- ✓ force to start

LIV SYSTEMS heavy duty Swivel castor + injection-moulded polyurethane tread Ø160 x W50mm for 400kg Prod ID: 42584

ID 42584: Castor overall height 200 mm | 4 mounting holes with distance 105x80 mm | Wheel with roller bearing and injection-moulded polyurethane tread with hardness 92 ° Shore A | Power ride, wide chemical resistance, small surface pressure, low force to

Product information

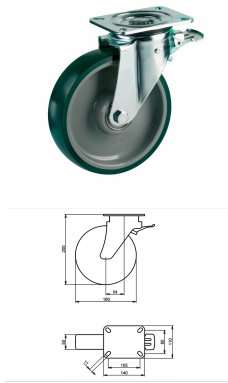
- Article code 2-082-32V
- SKU 42584
- EAN 3838461425844

Specifications

The result of our quality is maximum performance!

[Close](#)

[Close](#)



Product description

heavy duty Swivel castor with brake with an overall height of 200 mm

Wheel diameter x width: 160 x 50 mm

Top plate with 4 mounting holes of 11 mm, mounting hole distance 105x80 mm and top plate outer dimensions: 140x110 mm

Wheel with plain bearing and injection-moulded polyurethane tread with hardness 92 ° Shore A on polyamide

the double brake system, brakes the turning of the wheel and the swivel rotation.

Approved and tested load capacity

Dynamic 400 kg

Static 500 kg

Temperature range:

Continuous operation: -25 | +55°C

Short (10 min) exposure: -30 | +55°C

Advantages of this Power ride Swivel castor with brake:

- ✓ chemical resistance
- ✓ surface pressure
- ✓ force to start

LIV SYSTEMS heavy duty Swivel castor with brake + injection-moulded polyurethane tread Ø160 x W50mm for 400kg Prod ID: 42604

ID 42604: Castor overall height 200 mm | 4 mounting holes with distance 105x80 mm | Wheel with plain bearing and injection-moulded polyurethane tread with hardness 92 ° Shore A | The double brake system, brakes the turning of the wheel and the swivel rot

Product information

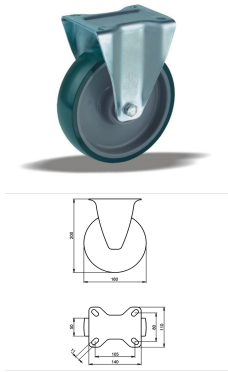
- Article code 2-083-32D
- SKU 42604
- EAN 3838461426049

Specifications

The result of our quality is maximum performance!

[Close](#)

[Close](#)



Product description

heavy duty Fixed castor with an overall height of 200 mm

Wheel diameter x width: 160 x 50 mm

Top plate with 4 mounting holes of 11 mm, mounting hole distance 105x80 mm and top plate outer dimensions: 140x110 mm

Wheel with plain bearing and injection-moulded polyurethane tread with hardness 92 ° Shore A on polyamide.

Approved and tested load capacity

Dynamic 400 kg

Static 500 kg

Temperature range:

Continuous operation: -25 | +55°C

Short (10 min) exposure: -30 | +55°C

Advantages of this Power ride Fixed castor:

- ✓ chemical resistance
- ✓ surface pressure
- ✓ force to start

LIV SYSTEMS heavy duty Fixed castor + injection-moulded polyurethane tread Ø160 x W50mm for 400kg Prod ID: 42624

ID 42624: Castor overall height 200 mm | 4 mounting holes with distance 105x80 mm | Wheel with plain bearing and injection-moulded polyurethane tread with hardness 92 ° Shore A | Power ride, wide chemical resistance, small surface pressure, low force to

Product information

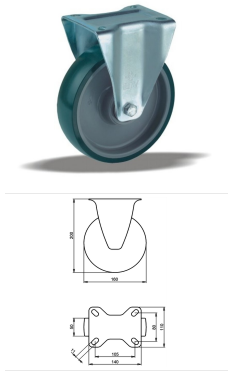
- Article code 2-081-32D
- SKU 42624
- EAN 3838461426247

Specifications

The result of our quality is maximum performance!

[Close](#)

[Close](#)



Product description

heavy duty Fixed castor with an overall height of 200 mm

Wheel diameter x width: 160 x 50 mm

Top plate with 4 mounting holes of 11 mm, mounting hole distance 105x80 mm and top plate outer dimensions: 140x110 mm

Wheel with roller bearing and injection-moulded polyurethane tread with hardness 92 ° Shore A on polyamide.

Approved and tested load capacity

Dynamic 400 kg

Static 500 kg

Temperature range:

Continuous operation: -25 | +55°C

Short (10 min) exposure: -30 | +55°C

Advantages of this Power ride Fixed castor:

- ✓ chemical resistance
- ✓ surface pressure
- ✓ force to start

LIV SYSTEMS heavy duty Fixed castor + injection-moulded polyurethane tread Ø160 x W50mm for 400kg Prod ID: 42623

ID 42623: Castor overall height 200 mm | 4 mounting holes with distance 105x80 mm | Wheel with roller bearing and injection-moulded polyurethane tread with hardness 92 ° Shore A | Power ride, wide chemical resistance, small surface pressure, low force to

Product information

- Article code 2-081-32V
- SKU 42623
- EAN 3838461426230

Specifications

The result of our quality is maximum performance!

[Close](#)

[Close](#)



Product description

heavy duty Wheel with plain bearing and solid polyamide wheel with hardness 70 ± 5 Shore D

Wheel diameter x width: 160 x 44 mm

Axle hole: 20 mm

Hub length: 59 mm

Approved and tested load capacity

Dynamic 400 kg

Static 500 kg

Temperature range:

Continuous operation: -25 | $+80^{\circ}\text{C}$

Short (10 min) exposure: -30 | $+110^{\circ}\text{C}$

Advantages of this High load easy start wheel:

- ✓ wearout
- ✓ effort to keep rolling
- ✓ to turn

LIV SYSTEMS heavy duty wheel + solid polyamide wheel $\text{\O}160$ x W44mm for 400kg Prod ID: 23705

ID 23705: heavy duty Wheel with plain bearing and solid polyamide wheel with hardness 70 ± 5 Shore D | Axle hole: 20 mm | Hub length: 59 mm | High load easy start, low wearout, little effort to keep rolling, easy to turn

Product information

- Article code 2-731
- SKU 23705
- EAN 3838461237058



Product description

heavy duty Wheel with plain bearing and solid polyamide wheel with hardness 70 ± 5 Shore D

Wheel diameter x width: 160 x 44 mm

Axle hole: 25 mm

Hub length: 59 mm

Approved and tested load capacity

Dynamic 400 kg

Static 500 kg

Temperature range:

Continuous operation: -25 | $+80^{\circ}\text{C}$

Short (10 min) exposure: -30 | $+110^{\circ}\text{C}$

Advantages of this High load easy start wheel:

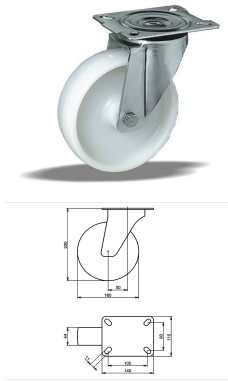
- ✓ wearout
- ✓ effort to keep rolling
- ✓ to turn

LIV SYSTEMS heavy duty wheel + solid polyamide wheel $\text{Ø}160$ x W44mm for 400kg Prod ID: 23704

ID 23704: heavy duty Wheel with plain bearing and solid polyamide wheel with hardness 70 ± 5 Shore D | Axle hole: 25 mm | Hub length: 59 mm | High load easy start, low wearout, little effort to keep rolling, easy to turn

Product information

- Article code 2-732
- SKU 23704
- EAN 3838461237041



Product description

heavy duty Swivel castor with an overall height of 200 mm

Wheel diameter x width: 160 x 44 mm

Top plate with 4 mounting holes of 11 mm, mounting hole distance 105x80 mm and top plate outer dimensions: 140x110 mm

Wheel with plain bearing and solid polyamide wheel with hardness 70±5 Shore D.

Approved and tested load capacity

Dynamic 400 kg

Static 500 kg

Temperature range:

Continuous operation: -25 | +80°C

Short (10 min) exposure: -30 | +110°C

Advantages of this High load easy start Swivel castor:

- ✓ wearout
- ✓ effort to keep rolling
- ✓ to turn

LIV SYSTEMS heavy duty Swivel castor + solid polyamide wheel Ø160 x W44mm for 400kg Prod ID: 55380

ID 55380: Castor overall height 200 mm | 4 mounting holes with distance 105x80 mm | Wheel with plain bearing and solid polyamide wheel with hardness 70±5 Shore D |

High load easy start, low wearout, little effort to keep rolling, easy to turn

Product information

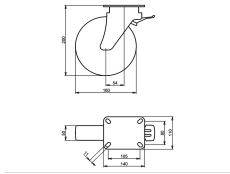
- Article code 2-738 ISO
- SKU 55380
- EAN 3838461553806

Specifications

The result of our quality is maximum performance!

[Close](#)

[Close](#)



Product description

heavy duty Swivel castor with brake with an overall height of 200 mm

Wheel diameter x width: 160 x 50 mm

Top plate with 4 mounting holes of 11 mm, mounting hole distance 105x80 mm and top plate outer dimensions: 140x110 mm

Wheel with plain bearing and solid polyamide wheel with hardness 70±5 Shore D

the double brake system, brakes the turning of the wheel and the swivel rotation.

Approved and tested load capacity

Dynamic 400 kg

Static 500 kg

Temperature range:

Continuous operation: -25 | +80°C

Short (10 min) exposure: -30 | +110°C

Advantages of this High load easy start Swivel castor with brake:

- ✓ wearout
- ✓ effort to keep rolling
- ✓ to turn

LIV SYSTEMS heavy duty Swivel castor with brake + solid polyamide wheel Ø160 x W50mm for 400kg Prod ID: 42555

ID 42555: Castor overall height 200 mm | 4 mounting holes with distance 105x80 mm | Wheel with plain bearing and solid polyamide wheel with hardness 70±5 Shore D | The double brake system, brakes the turning of the wheel and the swivel rotation. | High l

Product information

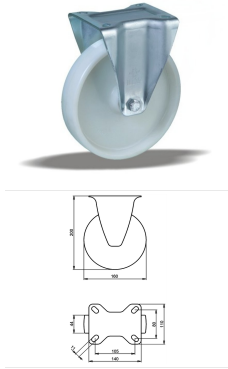
- Article code 2-063-32D
- SKU 42555
- EAN 3838461425554

Specifications

The result of our quality is maximum performance!

[Close](#)

[Close](#)



Product description

heavy duty Fixed castor with an overall height of 200 mm

Wheel diameter x width: 160 x 44 mm

Top plate with 4 mounting holes of 11 mm, mounting hole distance 105x80 mm and top plate outer dimensions: 140x110 mm

Wheel with plain bearing and solid polyamide wheel with hardness 70±5 Shore D.

Approved and tested load capacity

Dynamic 400 kg

Static 500 kg

Temperature range:

Continuous operation: -25 | +80°C

Short (10 min) exposure: -30 | +110°C

Advantages of this High load easy start Fixed castor:

- ✓ wearout
- ✓ effort to keep rolling
- ✓ to turn

LIV SYSTEMS heavy duty Fixed castor + solid polyamide wheel Ø160 x W44mm for 400kg Prod ID: 54621

ID 54621: Castor overall height 200 mm | 4 mounting holes with distance 105x80 mm | Wheel with plain bearing and solid polyamide wheel with hardness 70±5 Shore D |

High load easy start, low wearout, little effort to keep rolling, easy to turn

Product information

- Article code 2-735 ISO
- SKU 54621
- EAN 3838461546211

Specifications

The result of our quality is maximum performance!

[Close](#)

[Close](#)



Product description

heavy duty Wheel with plain bearing and solid polyamide wheel with hardness 70 ± 5 Shore D

Wheel diameter x width: 160 x 44 mm

Axle hole: 20 mm

Hub length: 59 mm

Approved and tested load capacity

Dynamic 400 kg

Static 500 kg

Temperature range:

Continuous operation: -25 | $+80^{\circ}\text{C}$

Short (10 min) exposure: -30 | $+110^{\circ}\text{C}$

Advantages of this High load easy start wheel:

- ✓ wearout
- ✓ effort to keep rolling
- ✓ to turn

LIV SYSTEMS heavy duty wheel + solid polyamide wheel $\text{Ø}160$ x W44mm for 400kg Prod ID: 91083

ID 91083: heavy duty Wheel with plain bearing and solid polyamide wheel with hardness 70 ± 5 Shore D | Axle hole: 20 mm | Hub length: 59 mm | High load easy start, low wearout, little effort to keep rolling, easy to turn

Product information

- Article code 2-731
- SKU 91083
- EAN 3838461910838



Product description

heavy duty Wheel with plain bearing and solid polyamide wheel with hardness 70 ± 5 Shore D

Wheel diameter x width: 160 x 44 mm

Axle hole: 25 mm

Hub length: 59 mm

Approved and tested load capacity

Dynamic 400 kg

Static 500 kg

Temperature range:

Continuous operation: -25 | $+80^{\circ}\text{C}$

Short (10 min) exposure: -30 | $+110^{\circ}\text{C}$

Advantages of this High load easy start wheel:

- ✓ wearout
- ✓ effort to keep rolling
- ✓ to turn

LIV SYSTEMS heavy duty wheel + solid polyamide wheel $\text{\O}160$ x W44mm for 400kg Prod ID: 91084

ID 91084: heavy duty Wheel with plain bearing and solid polyamide wheel with hardness 70 ± 5 Shore D | Axle hole: 25 mm | Hub length: 59 mm | High load easy start, low wearout, little effort to keep rolling, easy to turn

Product information

- Article code 2-732
- SKU 91084
- EAN 3838461910845



Product description

heavy duty Swivel castor with an overall height of 200 mm

Wheel diameter x width: 160 x 44 mm

Top plate with 4 mounting holes of 11 mm, mounting hole distance 105x80 mm and top plate outer dimensions: 140x110 mm

Wheel with plain bearing and solid polyamide wheel with hardness 70±5 Shore D.

Approved and tested load capacity

Dynamic 400 kg

Static 500 kg

Temperature range:

Continuous operation: -25 | +80°C

Short (10 min) exposure: -30 | +110°C

Advantages of this High load easy start Swivel castor:

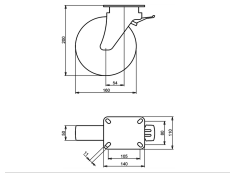
- ✓ wearout
- ✓ effort to keep rolling
- ✓ to turn

LIV SYSTEMS heavy duty Swivel castor + solid polyamide wheel Ø160 x W44mm for 400kg Prod ID: 31794

ID 31794: Castor overall height 200 mm | 4 mounting holes with distance 105x80 mm | Wheel with plain bearing and solid polyamide wheel with hardness 70±5 Shore D | High load easy start, low wearout, little effort to keep rolling, easy to turn

Product information

- Article code 2-738 ISO
- SKU 31794
- EAN 3838461317941



Product description

heavy duty Swivel castor with brake with an overall height of 200 mm

Wheel diameter x width: 160 x 50 mm

Top plate with 4 mounting holes of 11 mm, mounting hole distance 105x80 mm and top plate outer dimensions: 140x110 mm

Wheel with plain bearing and solid polyamide wheel with hardness 70±5 Shore D

the double brake system, brakes the turning of the wheel and the swivel rotation.

Approved and tested load capacity

Dynamic 400 kg

Static 500 kg

Temperature range:

Continuous operation: -25 | +80°C

Short (10 min) exposure: -30 | +110°C

Advantages of this High load easy start Swivel castor with brake:

- ✓ wearout
- ✓ effort to keep rolling
- ✓ to turn

LIV SYSTEMS heavy duty Swivel castor with brake + solid polyamide wheel Ø160 x W50mm for 400kg Prod ID: 42564

ID 42564: Castor overall height 200 mm | 4 mounting holes with distance 105x80 mm | Wheel with plain bearing and solid polyamide wheel with hardness 70±5 Shore D | The double brake system, brakes the turning of the wheel and the swivel rotation. | High l

Product information

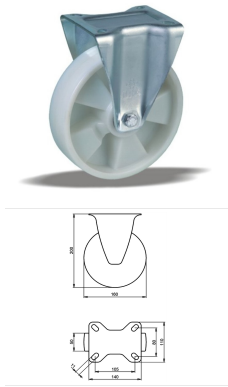
- Article code 2-063-32D
- SKU 42564
- EAN 3838461425646

Specifications

The result of our quality is maximum performance!

[Close](#)

[Close](#)



Product description

heavy duty Fixed castor with an overall height of 200 mm

Wheel diameter x width: 160 x 50 mm

Top plate with 4 mounting holes of 11 mm, mounting hole distance 105x80 mm and top plate outer dimensions: 140x110 mm

Wheel with ball bearing and solid polyamide wheel with hardness 70±5 Shore D.

Approved and tested load capacity

Dynamic 400 kg

Static 500 kg

Temperature range:

Continuous operation: -25 | +80°C

Short (10 min) exposure: -30 | +110°C

Advantages of this High load easy start Fixed castor:

- ✓ wearout
- ✓ effort to keep rolling
- ✓ to turn

LIV SYSTEMS heavy duty Fixed castor + solid polyamide wheel Ø160 x W50mm for 400kg Prod ID: 31775

ID 31775: Castor overall height 200 mm | 4 mounting holes with distance 105x80 mm | Wheel with ball bearing and solid polyamide wheel with hardness 70±5 Shore D | High load easy start, low wearout, little effort to keep rolling, easy to turn

Product information

- Article code 2-344 ISO
- SKU 31775
- EAN 3838461317750

Specifications

The result of our quality is maximum performance!

[Close](#)

[Close](#)



Product description

heavy duty Wheel with ball bearing and solid polyamide wheel with hardness 70 ± 5 Shore D

Wheel diameter x width: 160 x 50 mm

Axle hole: 20 mm

Hub length: 60 mm

Approved and tested load capacity

Dynamic 400 kg

Static 500 kg

Temperature range:

Continuous operation: -25 | $+80^{\circ}\text{C}$

Short (10 min) exposure: -30 | $+110^{\circ}\text{C}$

Advantages of this High load easy start wheel:

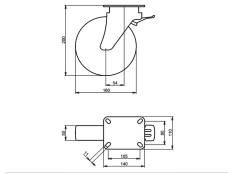
- ✓ wearout
- ✓ effort to keep rolling
- ✓ to turn

LIV SYSTEMS heavy duty wheel + solid polyamide wheel $\text{\O}160$ x W50mm for 400kg Prod ID: 35593

ID 35593: heavy duty Wheel with ball bearing and solid polyamide wheel with hardness 70 ± 5 Shore D | Axle hole: 20 mm | Hub length: 60 mm | High load easy start, low wearout, little effort to keep rolling, easy to turn

Product information

- Article code 2-278 ISO
- SKU 35593
- EAN 3838461355936



Product description

heavy duty Swivel castor with brake with an overall height of 200 mm

Wheel diameter x width: 160 x 50 mm

Top plate with 4 mounting holes of 11 mm, mounting hole distance 105x80 mm and top plate outer dimensions: 140x110 mm

Wheel with ball bearing and solid polyamide wheel with hardness 70±5 Shore D
the double brake system, brakes the turning of the wheel and the swivel rotation.

Approved and tested load capacity

Dynamic 400 kg

Static 500 kg

Temperature range:

Continuous operation: -25 | +80°C

Short (10 min) exposure: -30 | +110°C

Advantages of this High load easy start Swivel castor with brake:

- ✓ wearout
- ✓ effort to keep rolling
- ✓ to turn

LIV SYSTEMS heavy duty Swivel castor with brake + solid polyamide wheel Ø160 x W50mm for 400kg Prod ID: 42565

ID 42565: Castor overall height 200 mm | 4 mounting holes with distance 105x80 mm | Wheel with ball bearing and solid polyamide wheel with hardness 70±5 Shore D | The double brake system, brakes the turning of the wheel and the swivel rotation. | High lo

Product information

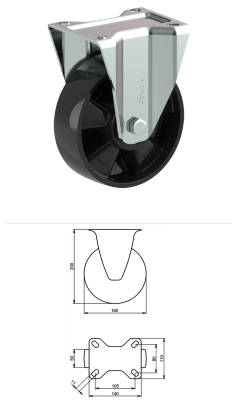
- Article code 2-063-32K
- SKU 42565
- EAN 3838461425653

Specifications

The result of our quality is maximum performance!

[Close](#)

[Close](#)



Product description

heavy duty Fixed castor with an overall height of 200 mm

Wheel diameter x width: 160 x 50 mm

Top plate with 4 mounting holes of 11 mm, mounting hole distance 105x80 mm and top plate outer dimensions: 140x110 mm

Wheel with ball bearing and solid polyamide wheel with hardness 70±5 Shore D.

Approved and tested load capacity

Dynamic 400 kg

Static 500 kg

Temperature range:

Continous operation: -25 | +80°C

Short (10 min) exposure: -30 | +110°C

Advantages of this High load easy start Fixed castor:

- ✓ wearout
- ✓ effort to keep rolling
- ✓ to turn

LIV SYSTEMS heavy duty Fixed castor + solid polyamide wheel Ø160 x W50mm for 400kg Prod ID: 54622

ID 54622: Castor overall height 200 mm | 4 mounting holes with distance 105x80 mm | Wheel with ball bearing and solid polyamide wheel with hardness 70±5 Shore D | High load easy start, low wearout, little effort to keep rolling, easy to turn

Product information

- Article code 2-344 ISO
- SKU 54622
- EAN 3838461546228

Алматы (7273)495-231
Ангарск (3955)60-70-56
Архангельск (8182)63-90-72
Астрахань (8512)99-46-04
Барнаул (3852)73-04-60
Белгород (4722)40-23-64
Благовещенск (4162)22-76-07
Брянск (4832)59-03-52
Владивосток (423)249-28-31
Владикавказ (8672)28-90-48
Владимир (4922)49-43-18
Волгоград (844)278-03-48
Вологда (8172)26-41-59
Воронеж (473)204-51-73
Екатеринбург (343)384-55-89

Иваново (4932)77-34-06
Ижевск (3412)26-03-58
Иркутск (395)279-98-46
Казань (843)206-01-48
Калининград (4012)72-03-81
Калуга (4842)92-23-67
Кемерово (3842)65-04-62
Киров (8332)68-02-04
Коломна (4966)23-41-49
Кострома (4942)77-07-48
Краснодар (861)203-40-90
Красноярск (391)204-63-61
Курск (4712)77-13-04
Курган (3522)50-90-47
Липецк (4742)52-20-81

Россия +7(495)268-04-70

Магнитогорск (3519)55-03-13
Москва (495)268-04-70
Мурманск (8152)59-64-93
Набережные Челны (8552)20-53-41
Нижний Новгород (831)429-08-12
Новокузнецк (3843)20-46-81
Ноябрьск (3496)41-32-12
Новосибирск (383)227-86-73
Омск (3812)21-46-40
Орел (4862)44-53-42
Оренбург (3532)37-68-04
Пенза (8412)22-31-16
Петрозаводск (8142)55-98-37
Псков (8112)59-10-37
Пермь (342)205-81-47

Казахстан +7(7172)727-132

Ростов-на-Дону (863)308-18-15
Рязань (4912)46-61-64
Самара (846)206-03-16
Санкт-Петербург (812)309-46-40
Саратов (845)249-38-78
Севастополь (8692)22-31-93
Саранск (8342)22-96-24
Симферополь (3652)67-13-56
Смоленск (4812)29-41-54
Сочи (862)225-72-31
Ставрополь (8652)20-65-13
Сургут (3462)77-98-35
Сыктывкар (8212)25-95-17
Тамбов (4752)50-40-97
Тверь (4822)63-31-35

Киргизия +996(312)96-26-47

Тольятти (8482)63-91-07
Томск (3822)98-41-53
Тула (4872)33-79-87
Тюмень (3452)66-21-18
Ульяновск (8422)24-23-59
Улан-Удэ (3012)59-97-51
Уфа (347)229-48-12
Хабаровск (4212)92-98-04
Чебоксары (8352)28-53-07
Челябинск (351)202-03-61
Череповец (8202)49-02-64
Чита (3022)38-34-83
Якутск (4112)23-90-97
Ярославль (4852)69-52-93

<https://liv.nt-rt.ru/> || vis@nt-rt.ru