

Product description

standard Fixed castor with an overall height of 106 mm

Wheel diameter x width: 80 x 35 mm

Top plate with 4 mounting holes of 9 mm, mounting hole distance 80x60 mm and top plate outer dimensions: 105x85 mm

Wheel with plain bearing and solid polyamide wheel with hardness 70±5 Shore D.

Approved and tested load capacity

Dynamic 150 kg

Static 180 kg

Temperature range:

Continuous operation: -25 | +80°C

Short (10 min) exposure: -30 | +110°C

Advantages of this High load easy start Fixed castor:

- ✓ wearout
- ✓ effort to keep rolling
- ✓ to turn

LIV SYSTEMS standard Fixed castor + solid polyamide wheel Ø80 x W35mm for 150kg Prod ID: 40774

ID 40774: Castor overall height 106 mm | 4 mounting holes with distance 80x60 mm | Wheel with plain bearing and solid polyamide wheel with hardness 70±5 Shore D | High load easy start, low wearout, little effort to keep rolling, easy to turn

Product information

- Article code 2-061-16D
- SKU 40774
- EAN 3838461407741

Алматы (7273)495-231
Ангарск (3955)60-70-56
Архангельск (8182)63-90-72
Астрахань (8512)99-46-04
Барнаул (3852)73-04-60
Белгород (4722)40-23-64
Благовещенск (4162)22-76-07
Брянск (4832)59-03-52
Владивосток (423)249-28-31
Владикавказ (8672)28-90-48
Владимир (4922)49-43-18
Волгоград (844)278-03-48
Вологда (8172)26-41-59
Воронеж (473)204-51-73
Екатеринбург (343)384-55-89

Иваново (4932)77-34-06
Ижевск (3412)26-03-58
Иркутск (395)279-98-46
Казань (843)206-01-48
Калининград (4012)72-03-81
Калуга (4842)92-23-67
Кемерово (3842)65-04-62
Киров (8332)68-02-04
Коломна (4966)23-41-49
Кострома (4942)77-07-48
Краснодар (861)203-40-90
Красноярск (391)204-63-61
Курск (4712)77-13-04
Курган (3522)50-90-47
Липецк (4742)52-20-81

Магнитогорск (3519)55-03-13
Москва (495)268-04-70
Мурманск (8152)59-64-93
Набережные Челны (8552)20-53-41
Нижний Новгород (831)429-08-12
Новокузнецк (3843)20-46-81
Ноябрьск (3496)41-32-12
Новосибирск (383)227-86-73
Омск (3812)21-46-40
Орел (4862)44-53-42
Оренбург (3532)37-68-04
Пенза (8412)22-31-16
Петрозаводск (8142)55-98-37
Псков (8112)59-10-37
Пермь (342)205-81-47

Ростов-на-Дону (863)308-18-15
Рязань (4912)46-61-64
Самара (846)206-03-16
Санкт-Петербург (812)309-46-40
Саратов (845)249-38-78
Севастополь (8692)22-31-93
Саранск (8342)22-96-24
Симферополь (3652)67-13-56
Смоленск (4812)29-41-54
Сочи (862)225-72-31
Ставрополь (8652)20-65-13
Сургут (3462)77-98-35
Сыктывкар (8212)25-95-17
Тамбов (4752)50-40-97
Тверь (4822)63-31-35

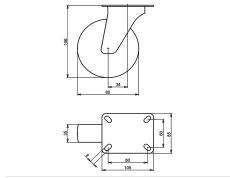
Тольятти (8482)63-91-07
Томск (3822)98-41-53
Тула (4872)33-79-87
Тюмень (3452)66-21-18
Ульяновск (8422)24-23-59
Улан-Удэ (3012)59-97-51
Уфа (347)229-48-12
Хабаровск (4212)92-98-04
Чебоксары (8352)28-53-07
Челябинск (351)202-03-61
Череповец (8202)49-02-64
Чита (3022)38-34-83
Якутск (4112)23-90-97
Ярославль (4852)69-52-93

Россия +7(495)268-04-70

Казахстан +7(7172)727-132

Киргизия +996(312)96-26-47

<https://liv.nt-rt.ru/> || vis@nt-rt.ru



Product description

standard Swivel castor with an overall height of 106 mm

Wheel diameter x width: 80 x 35 mm

Top plate with 4 mounting holes of 9 mm, mounting hole distance 80x60 mm and top plate outer dimensions: 105x85 mm

Wheel with plain bearing and solid polyamide wheel with hardness 70±5 Shore D.

Approved and tested load capacity

Dynamic 150 kg

Static 180 kg

Temperature range:

Continuous operation: -25 | +80°C

Short (10 min) exposure: -30 | +110°C

Advantages of this High load easy start Swivel castor:

- ✓ wearout
- ✓ effort to keep rolling
- ✓ to turn

LIV SYSTEMS standard Swivel castor + solid polyamide wheel Ø80 x W35mm for 150kg Prod ID: 40813

ID 40813: Castor overall height 106 mm | 4 mounting holes with distance 80x60 mm | Wheel with plain bearing and solid polyamide wheel with hardness 70±5 Shore D | High load easy start, low wearout, little effort to keep rolling, easy to turn

Product information

- Article code 2-062-16D
- SKU 40813
- EAN 3838461408137

Specifications

The result of our quality is maximum performance!

[Close](#)

[Close](#)



Product description

standard Swivel castor with brake with an overall height of 106 mm

Wheel diameter x width: 80 x 35 mm

Top plate with 4 mounting holes of 12,5 mm, mounting hole distance #50 mm and top plate outer dimensions: 70 mm

Wheel with plain bearing and solid polyamide wheel with hardness 70±5 Shore D
the double brake system, brakes the turning of the wheel and the swivel rotation.

Approved and tested load capacity

Dynamic 150 kg

Static 180 kg

Temperature range:

Continuous operation: -25 | +80°C

Short (10 min) exposure: -30 | +110°C

Advantages of this High load easy start Swivel castor with brake:

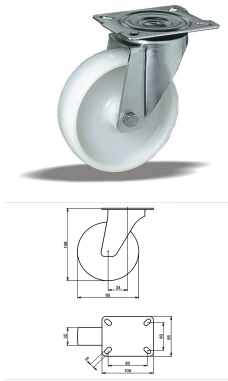
- ✓ wearout
- ✓ effort to keep rolling
- ✓ to turn

LIV SYSTEMS standard Swivel castor with brake + solid polyamide wheel Ø80 x W35mm for 150kg Prod ID: 40933

ID 40933: Castor overall height 106 mm | 4 mounting holes with distance #50 mm | Wheel with plain bearing and solid polyamide wheel with hardness 70±5 Shore D | The double brake system, brakes the turning of the wheel and the swivel rotation. | High load

Product information

- 
- Article code 2-065-16D
 - SKU 40933
 - EAN 3838461409332



Product description

standard Swivel castor with an overall height of 106 mm

Wheel diameter x width: 80 x 35 mm

Top plate with 4 mounting holes of 9 mm, mounting hole distance 80x60 mm and top plate outer dimensions: 105x85 mm

Wheel with plain bearing and solid polyamide wheel with hardness 70±5 Shore D.

Approved and tested load capacity

Dynamic 150 kg

Static 180 kg

Temperature range:

Continuous operation: -25 | +80°C

Short (10 min) exposure: -30 | +110°C

Advantages of this High load easy start Swivel castor:

- ✓ wearout
- ✓ effort to keep rolling
- ✓ to turn

LIV SYSTEMS standard Swivel castor + solid polyamide wheel Ø80 x W35mm for 150kg Prod ID: 40814

ID 40814: Castor overall height 106 mm | 4 mounting holes with distance 80x60 mm | Wheel with plain bearing and solid polyamide wheel with hardness 70±5 Shore D | High load easy start, low wearout, little effort to keep rolling, easy to turn

Product information

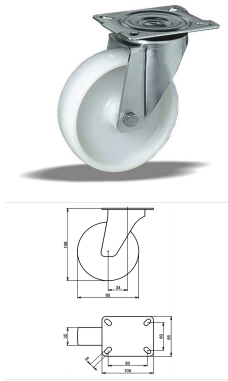
- Article code 2-062-16D
- SKU 40814
- EAN 3838461408144

Specifications

The result of our quality is maximum performance!

[Close](#)

[Close](#)



Product description

standard Swivel castor with an overall height of 106 mm

Wheel diameter x width: 80 x 35 mm

Top plate with 4 mounting holes of 9 mm, mounting hole distance 80x60 mm and top plate outer dimensions: 105x85 mm

Wheel with roller bearing and solid polyamide wheel with hardness 70±5 Shore D.

Approved and tested load capacity

Dynamic 150 kg

Static 180 kg

Temperature range:

Continuous operation: -25 | +80°C

Short (10 min) exposure: -30 | +110°C

Advantages of this High load easy start Swivel castor:

- ✓ wearout
- ✓ effort to keep rolling
- ✓ to turn

LIV SYSTEMS standard Swivel castor + solid polyamide wheel Ø80 x W35mm for 150kg Prod ID: 40805

ID 40805: Castor overall height 106 mm | 4 mounting holes with distance 80x60 mm | Wheel with roller bearing and solid polyamide wheel with hardness 70±5 Shore D | High load easy start, low wearout, little effort to keep rolling, easy to turn

Product information

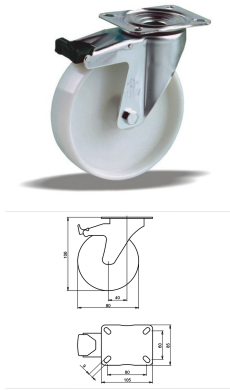
- Article code 2-062-16V
- SKU 40805
- EAN 3838461408052

Specifications

The result of our quality is maximum performance!

[Close](#)

[Close](#)



Product description

standard Swivel castor with brake with an overall height of 106 mm
 Wheel diameter x width: 80 x 35 mm
 Top plate with 4 mounting holes of 9 mm, mounting hole distance 80x60 mm and top plate outer dimensions: 105x85 mm
 Wheel with plain bearing and solid polyamide wheel with hardness 70±5 Shore D
 the double brake system, brakes the turning of the wheel and the swivel rotation.

Approved and tested load capacity

Dynamic 150 kg
 Static 180 kg

Temperature range:

Continuous operation: -25 | +80°C
 Short (10 min) exposure: -30 | +110°C

Advantages of this High load easy start Swivel castor with brake:

- ✓ wearout
- ✓ effort to keep rolling
- ✓ to turn

LIV SYSTEMS standard Swivel castor with brake + solid polyamide wheel Ø80 x W35mm for 150kg Prod ID: 40854

ID 40854: Castor overall height 106 mm | 4 mounting holes with distance 80x60 mm | Wheel with plain bearing and solid polyamide wheel with hardness 70±5 Shore D | The double brake system, brakes the turning of the wheel and the swivel rotation. | High lo

Product information

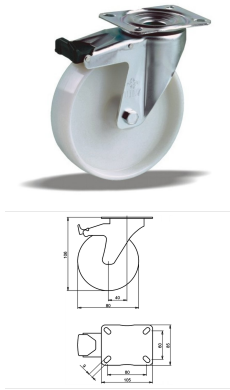
- Article code 2-063-16D
- SKU 40854
- EAN 3838461408540

Specifications

The result of our quality is maximum performance!

[Close](#)

[Close](#)



Product description

standard Swivel castor with brake with an overall height of 106 mm
 Wheel diameter x width: 80 x 35 mm
 Top plate with 4 mounting holes of 9 mm, mounting hole distance 80x60 mm and top plate outer dimensions: 105x85 mm
 Wheel with roller bearing and solid polyamide wheel with hardness 70±5 Shore D
 the double brake system, brakes the turning of the wheel and the swivel rotation.

Approved and tested load capacity

Dynamic 150 kg
 Static 180 kg

Temperature range:

Continuous operation: -25 | +80°C
 Short (10 min) exposure: -30 | +110°C

Advantages of this High load easy start Swivel castor with brake:

- ✓ wearout
- ✓ effort to keep rolling
- ✓ to turn

LIV SYSTEMS standard Swivel castor with brake + solid polyamide wheel Ø80 x W35mm for 150kg Prod ID: 40845

ID 40845: Castor overall height 106 mm | 4 mounting holes with distance 80x60 mm | Wheel with roller bearing and solid polyamide wheel with hardness 70±5 Shore D | The double brake system, brakes the turning of the wheel and the swivel rotation. | High I

Product information

- Article code 2-063-16V
- SKU 40845
- EAN 3838461408458

Specifications

The result of our quality is maximum performance!

[Close](#)

[Close](#)



Product description

standard Swivel castor with brake with an overall height of 106 mm

Wheel diameter x width: 80 x 35 mm

Top plate with 4 mounting holes of 12,5 mm, mounting hole distance #50 mm and top plate outer dimensions: 70 mm

Wheel with plain bearing and solid polyamide wheel with hardness 70±5 Shore D
the double brake system, brakes the turning of the wheel and the swivel rotation.

Approved and tested load capacity

Dynamic 150 kg

Static 180 kg

Temperature range:

Continuous operation: -25 | +80°C

Short (10 min) exposure: -30 | +110°C


Advantages of this High load easy start Swivel castor with brake:

- ✓ wearout
- ✓ effort to keep rolling
- ✓ to turn

LIV SYSTEMS standard Swivel castor with brake + solid polyamide wheel Ø80 x W35mm for 150kg Prod ID: 40934

ID 40934: Castor overall height 106 mm | 4 mounting holes with distance #50 mm | Wheel with plain bearing and solid polyamide wheel with hardness 70±5 Shore D | The double brake system, brakes the turning of the wheel and the swivel rotation. | High load

Product information

- 
- Article code 2-065-16D
 - SKU 40934
 - EAN 3838461409349



Product description

standard Swivel castor with brake with an overall height of 106 mm

Wheel diameter x width: 80 x 35 mm

Top plate with 4 mounting holes of 12,5 mm, mounting hole distance #\$\$% mm and top plate outer dimensions: 70 mm

Wheel with roller bearing and solid polyamide wheel with hardness 70±5 Shore D
the double brake system, brakes the turning of the wheel and the swivel rotation.

Approved and tested load capacity

Dynamic 150 kg

Static 180 kg

Temperature range:

Continuous operation: -25 | +80°C

Short (10 min) exposure: -30 | +110°C

Advantages of this High load easy start Swivel castor with brake:

- ✓ wearout
- ✓ effort to keep rolling
- ✓ to turn

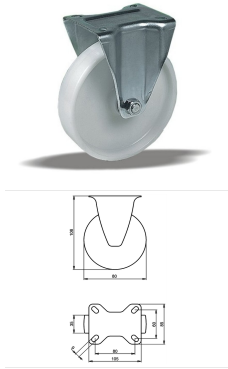
LIV SYSTEMS standard Swivel castor with brake + solid polyamide wheel

Ø80 x W35mm for 150kg Prod ID: 40925

ID 40925: Castor overall height 106 mm | 4 mounting holes with distance #\$\$% mm | Wheel with roller bearing and solid polyamide wheel with hardness 70±5 Shore D | The double brake system, brakes the turning of the wheel and the swivel rotation. | High loa

Product information

- 
- Article code 2-065-16V
 - SKU 40925
 - EAN 3838461409257



Product description

standard Fixed castor with an overall height of 106 mm

Wheel diameter x width: 80 x 35 mm

Top plate with 4 mounting holes of 9 mm, mounting hole distance 80x60 mm and top plate outer dimensions: 105x85 mm

Wheel with roller bearing and solid polyamide wheel with hardness 70±5 Shore D.

Approved and tested load capacity

Dynamic 150 kg

Static 180 kg

Temperature range:

Continuous operation: -25 | +80°C

Short (10 min) exposure: -30 | +110°C

Advantages of this High load easy start Fixed castor:

- ✓ wearout
- ✓ effort to keep rolling
- ✓ to turn

LIV SYSTEMS standard Fixed castor + solid polyamide wheel Ø80 x W35mm for 150kg Prod ID: 40765

ID 40765: Castor overall height 106 mm | 4 mounting holes with distance 80x60 mm | Wheel with roller bearing and solid polyamide wheel with hardness 70±5 Shore D | High load easy start, low wearout, little effort to keep rolling, easy to turn

Product information

- Article code 2-061-16V
- SKU 40765
- EAN 3838461407659

Specifications

The result of our quality is maximum performance!

[Close](#)

[Close](#)



Product description

standard Swivel castor with an overall height of 106 mm

Wheel diameter x width: 80 x 35 mm

Top plate with 4 mounting holes of 12,5 mm, mounting hole distance #\$\$ mm and top plate outer dimensions: 70 mm

Wheel with plain bearing and solid polyamide wheel with hardness 70±5 Shore D.

Approved and tested load capacity

Dynamic 150 kg

Static 180 kg

Temperature range:

Continuous operation: -25 | +80°C

Short (10 min) exposure: -30 | +110°C

Advantages of this High load easy start Swivel castor:

- ✓ wearout
- ✓ effort to keep rolling
- ✓ to turn

LIV SYSTEMS standard Swivel castor + solid polyamide wheel Ø80 x W35mm for 150kg Prod ID: 40894

ID 40894: Castor overall height 106 mm | 4 mounting holes with distance #\$\$ mm | Wheel with plain bearing and solid polyamide wheel with hardness 70±5 Shore D | High load easy start, low wearout, little effort to keep rolling, easy to turn

Product information

- Article code 2-064-16D
- SKU 40894
- EAN 3838461408946



Product description

standard Swivel castor with an overall height of 106 mm

Wheel diameter x width: 80 x 35 mm

Top plate with 4 mounting holes of 12,5 mm, mounting hole distance #\$\$ mm and top plate outer dimensions: 70 mm

Wheel with roller bearing and solid polyamide wheel with hardness 70±5 Shore D.

Approved and tested load capacity

Dynamic 150 kg

Static 180 kg

Temperature range:

Continuous operation: -25 | +80°C

Short (10 min) exposure: -30 | +110°C

Advantages of this High load easy start Swivel castor:

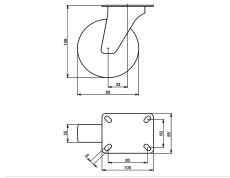
- ✓ wearout
- ✓ effort to keep rolling
- ✓ to turn

LIV SYSTEMS standard Swivel castor + solid polyamide wheel Ø80 x W35mm for 150kg Prod ID: 40885

ID 40885: Castor overall height 106 mm | 4 mounting holes with distance #\$\$ mm | Wheel with roller bearing and solid polyamide wheel with hardness 70±5 Shore D | High load easy start, low wearout, little effort to keep rolling, easy to turn

Product information

- Article code 2-064-16V
- SKU 40885
- EAN 3838461408854



Product description

standard Swivel castor with an overall height of 106 mm

Wheel diameter x width: 80 x 35 mm

Top plate with 4 mounting holes of 9 mm, mounting hole distance 80x60 mm and top plate outer dimensions: 105x85 mm

Wheel with roller bearing and solid polyamide wheel with hardness 70±5 Shore D.

Approved and tested load capacity

Dynamic 150 kg

Static 180 kg

Temperature range:

Continuous operation: -25 | +80°C

Short (10 min) exposure: -30 | +110°C

Advantages of this High load easy start Swivel castor:

- ✓ wearout
- ✓ effort to keep rolling
- ✓ to turn

LIV SYSTEMS standard Swivel castor + solid polyamide wheel Ø80 x W35mm for 150kg Prod ID: 40804

ID 40804: Castor overall height 106 mm | 4 mounting holes with distance 80x60 mm | Wheel with roller bearing and solid polyamide wheel with hardness 70±5 Shore D | High load easy start, low wearout, little effort to keep rolling, easy to turn

Product information

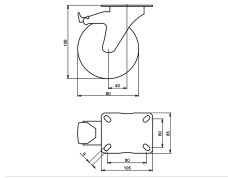
- Article code 2-062-16V
- SKU 40804
- EAN 3838461408045

Specifications

The result of our quality is maximum performance!

[Close](#)

[Close](#)



Product description

standard Swivel castor with brake with an overall height of 106 mm
 Wheel diameter x width: 80 x 35 mm
 Top plate with 4 mounting holes of 9 mm, mounting hole distance 80x60 mm and top plate outer dimensions: 105x85 mm
 Wheel with plain bearing and solid polyamide wheel with hardness 70±5 Shore D
 the double brake system, brakes the turning of the wheel and the swivel rotation.

Approved and tested load capacity

Dynamic 150 kg
 Static 180 kg

Temperature range:

Continuous operation: -25 | +80°C
 Short (10 min) exposure: -30 | +110°C

Advantages of this High load easy start Swivel castor with brake:

- ✓ wearout
- ✓ effort to keep rolling
- ✓ to turn

LIV SYSTEMS standard Swivel castor with brake + solid polyamide wheel Ø80 x W35mm for 150kg Prod ID: 40853

ID 40853: Castor overall height 106 mm | 4 mounting holes with distance 80x60 mm | Wheel with plain bearing and solid polyamide wheel with hardness 70±5 Shore D | The double brake system, brakes the turning of the wheel and the swivel rotation. | High lo

Product information

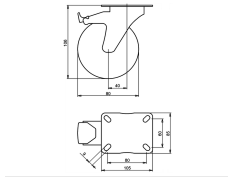
- Article code 2-063-16D
- SKU 40853
- EAN 3838461408533

Specifications

The result of our quality is maximum performance!

[Close](#)

[Close](#)



Product description

standard Swivel castor with brake with an overall height of 106 mm
 Wheel diameter x width: 80 x 35 mm
 Top plate with 4 mounting holes of 9 mm, mounting hole distance 80x60 mm and top plate outer dimensions: 105x85 mm
 Wheel with roller bearing and solid polyamide wheel with hardness 70±5 Shore D
 the double brake system, brakes the turning of the wheel and the swivel rotation.

Approved and tested load capacity

Dynamic 150 kg
 Static 180 kg

Temperature range:

Continuous operation: -25 | +80°C
 Short (10 min) exposure: -30 | +110°C

Advantages of this High load easy start Swivel castor with brake:

- ✓ wearout
- ✓ effort to keep rolling
- ✓ to turn

LIV SYSTEMS standard Swivel castor with brake + solid polyamide wheel Ø80 x W35mm for 150kg Prod ID: 40844

ID 40844: Castor overall height 106 mm | 4 mounting holes with distance 80x60 mm | Wheel with roller bearing and solid polyamide wheel with hardness 70±5 Shore D | The double brake system, brakes the turning of the wheel and the swivel rotation. | High I

Product information

- Article code 2-063-16V
- SKU 40844
- EAN 3838461408441

Specifications

The result of our quality is maximum performance!

[Close](#)

[Close](#)



Product description

standard Swivel castor with an overall height of 106 mm

Wheel diameter x width: 80 x 35 mm

Top plate with 4 mounting holes of 12,5 mm, mounting hole distance #\$\$ mm and top plate outer dimensions: 70 mm

Wheel with plain bearing and solid polyamide wheel with hardness 70±5 Shore D.

Approved and tested load capacity

Dynamic 150 kg

Static 180 kg

Temperature range:

Continuous operation: -25 | +80°C

Short (10 min) exposure: -30 | +110°C

Advantages of this High load easy start Swivel castor:

- ✓ wearout
- ✓ effort to keep rolling
- ✓ to turn

LIV SYSTEMS standard Swivel castor + solid polyamide wheel Ø80 x W35mm for 150kg Prod ID: 40893

ID 40893: Castor overall height 106 mm | 4 mounting holes with distance #\$\$ mm | Wheel with plain bearing and solid polyamide wheel with hardness 70±5 Shore D | High load easy start, low wearout, little effort to keep rolling, easy to turn

Product information

- Article code 2-064-16D
- SKU 40893
- EAN 3838461408939



Product description

standard Swivel castor with an overall height of 106 mm

Wheel diameter x width: 80 x 35 mm

Top plate with 4 mounting holes of 12,5 mm, mounting hole distance #\$\$ mm and top plate outer dimensions: 70 mm

Wheel with roller bearing and solid polyamide wheel with hardness 70±5 Shore D.

Approved and tested load capacity

Dynamic 150 kg

Static 180 kg

Temperature range:

Continuous operation: -25 | +80°C

Short (10 min) exposure: -30 | +110°C

Advantages of this High load easy start Swivel castor:

- ✓ wearout
- ✓ effort to keep rolling
- ✓ to turn

LIV SYSTEMS standard Swivel castor + solid polyamide wheel Ø80 x W35mm for 150kg Prod ID: 40884

ID 40884: Castor overall height 106 mm | 4 mounting holes with distance #\$\$ mm | Wheel with roller bearing and solid polyamide wheel with hardness 70±5 Shore D | High load easy start, low wearout, little effort to keep rolling, easy to turn

Product information

- Article code 2-064-16V
- SKU 40884
- EAN 3838461408847



Product description

standard Swivel castor with brake with an overall height of 106 mm

Wheel diameter x width: 80 x 35 mm

Top plate with 4 mounting holes of 12,5 mm, mounting hole distance #50 mm and top plate outer dimensions: 70 mm

Wheel with roller bearing and solid polyamide wheel with hardness 70±5 Shore D
the double brake system, brakes the turning of the wheel and the swivel rotation.

Approved and tested load capacity

Dynamic 150 kg

Static 180 kg

Temperature range:

Continuous operation: -25 | +80°C

Short (10 min) exposure: -30 | +110°C

Advantages of this High load easy start Swivel castor with brake:


- ✓ wearout
- ✓ effort to keep rolling
- ✓ to turn

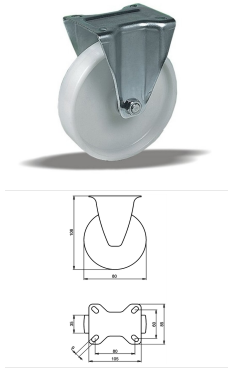
LIV SYSTEMS standard Swivel castor with brake + solid polyamide wheel

Ø80 x W35mm for 150kg Prod ID: 40924

ID 40924: Castor overall height 106 mm | 4 mounting holes with distance #50 mm | Wheel with roller bearing and solid polyamide wheel with hardness 70±5 Shore D | The double brake system, brakes the turning of the wheel and the swivel rotation. | High load

Product information

- 
- Article code 2-065-16V
 - SKU 40924
 - EAN 3838461409240



Product description

standard Fixed castor with an overall height of 106 mm

Wheel diameter x width: 80 x 35 mm

Top plate with 4 mounting holes of 9 mm, mounting hole distance 80x60 mm and top plate outer dimensions: 105x85 mm

Wheel with plain bearing and solid polyamide wheel with hardness 70±5 Shore D.

Approved and tested load capacity

Dynamic 150 kg

Static 180 kg

Temperature range:

Continuous operation: -25 | +80°C

Short (10 min) exposure: -30 | +110°C

Advantages of this High load easy start Fixed castor:

- ✓ wearout
- ✓ effort to keep rolling
- ✓ to turn

LIV SYSTEMS standard Fixed castor + solid polyamide wheel Ø80 x W35mm for 150kg Prod ID: 40773

ID 40773: Castor overall height 106 mm | 4 mounting holes with distance 80x60 mm | Wheel with plain bearing and solid polyamide wheel with hardness 70±5 Shore D | High load easy start, low wearout, little effort to keep rolling, easy to turn

Product information

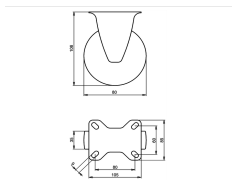
- Article code 2-061-16D
- SKU 40773
- EAN 3838461407734

Specifications

The result of our quality is maximum performance!

[Close](#)

[Close](#)



Product description

standard Fixed castor with an overall height of 106 mm

Wheel diameter x width: 80 x 35 mm

Top plate with 4 mounting holes of 9 mm, mounting hole distance 80x60 mm and top plate outer dimensions: 105x85 mm

Wheel with roller bearing and solid polyamide wheel with hardness 70±5 Shore D.

Approved and tested load capacity

Dynamic 150 kg

Static 180 kg

Temperature range:

Continuous operation: -25 | +80°C

Short (10 min) exposure: -30 | +110°C

Advantages of this High load easy start Fixed castor:

- ✓ wearout
- ✓ effort to keep rolling
- ✓ to turn

LIV SYSTEMS standard Fixed castor + solid polyamide wheel Ø80 x W35mm for 150kg Prod ID: 40764

ID 40764: Castor overall height 106 mm | 4 mounting holes with distance 80x60 mm | Wheel with roller bearing and solid polyamide wheel with hardness 70±5 Shore D | High load easy start, low wearout, little effort to keep rolling, easy to turn

Product information

- Article code 2-061-16V
- SKU 40764
- EAN 3838461407642

Алматы (7273)495-231
Ангарск (3955)60-70-56
Архангельск (8182)63-90-72
Астрахань (8512)99-46-04
Барнаул (3852)73-04-60
Белгород (4722)40-23-64
Благовещенск (4162)22-76-07
Брянск (4832)59-03-52
Владивосток (423)249-28-31
Владикавказ (8672)28-90-48
Владимир (4922)49-43-18
Волгоград (844)278-03-48
Вологда (8172)26-41-59
Воронеж (473)204-51-73
Екатеринбург (343)384-55-89

Иваново (4932)77-34-06
Ижевск (3412)26-03-58
Иркутск (395)279-98-46
Казань (843)206-01-48
Калининград (4012)72-03-81
Калуга (4842)92-23-67
Камерово (3842)65-04-62
Киров (8332)68-02-04
Коломна (4966)23-41-49
Кострома (4942)77-07-48
Краснодар (861)203-40-90
Красноярск (391)204-63-61
Курск (4712)77-13-04
Курган (3522)50-90-47
Липецк (4742)52-20-81

Магнитогорск (3519)55-03-13
Москва (495)268-04-70
Мурманск (8152)59-64-93
Набережные Челны (8552)20-53-41
Нижний Новгород (831)429-08-12
Новокузнецк (3843)20-46-81
Ноябрьск (3496)41-32-12
Новосибирск (383)227-86-73
Омск (3812)21-46-40
Орел (4862)44-53-42
Оренбург (3532)37-68-04
Пенза (8412)22-31-16
Петрозаводск (8142)55-98-37
Псков (8112)59-10-37
Пермь (342)205-81-47

Ростов-на-Дону (863)308-18-15
Рязань (4912)46-61-64
Самара (846)206-03-16
Санкт-Петербург (812)309-46-40
Саратов (845)249-38-78
Севастополь (8692)22-31-93
Саранск (8342)22-96-24
Симферополь (3652)67-13-56
Смоленск (4812)29-41-54
Сочи (862)225-72-31
Ставрополь (8652)20-65-13
Сургут (3462)77-98-35
Сыктывкар (8212)25-95-17
Тамбов (4752)50-40-97
Тверь (4822)63-31-35

Тольятти (8482)63-91-07
Томск (3822)98-41-53
Тула (4872)33-79-87
Тюмень (3452)66-21-18
Ульяновск (8422)24-23-59
Улан-Удэ (3012)59-97-51
Уфа (347)229-48-12
Хабаровск (4212)92-98-04
Чебоксары (8352)28-53-07
Челябинск (351)202-03-61
Череповец (8202)49-02-64
Чита (3022)38-34-83
Якутск (4112)23-90-97
Ярославль (4852)69-52-93

Россия +7(495)268-04-70

Казахстан +7(7172)727-132

Киргизия +996(312)96-26-47

<https://liv.nt-rt.ru/> || vis@nt-rt.ru