



Product description

heavy duty Swivel castor with brake with an overall height of 240 mm

Wheel diameter x width: 200 x 50 mm

Top plate with 4 mounting holes of 11 mm, mounting hole distance 105x80 mm and top plate outer dimensions: 140x110 mm

Wheel with ball bearing and injection-moulded polyurethane tread with hardness 92 ° Shore A on aluminium the double brake system, brakes the turning of the wheel and the swivel rotation.

Approved and tested load capacity

Dynamic 600 kg

Static 750 kg

Temperature range:

Continuous operation: -25 | -55°C

Short (10 min) exposure: -40 | +55°C

Advantages of this Indestructable footing Swivel castor with brake:

- ✓ burden transport
- ✓ resistance
- ✓ own weight

LIV SYSTEMS heavy duty Swivel castor with brake + injection-moulded polyurethane tread Ø200 x W50mm for 600kg Prod ID: 42415

ID 42415: Castor overall height 240 mm | 4 mounting holes with distance 105x80 mm | Wheel with ball bearing and injection-moulded polyurethane tread with hardness 92 ° Shore A | The double brake system, brakes the turning of the wheel and the swivel rotation

Product information

- Article code 2-123-40K
- SKU 42415
- EAN 3838461424151

Алматы (7273)495-231
Ангарск (3955)60-70-56
Архангельск (8182)63-90-72
Астрахань (8512)99-46-04
Барнаул (3852)73-04-60
Белгород (4722)40-23-64
Благовещенск (4162)22-76-07
Брянск (4832)59-03-52
Владивосток (423)249-28-31
Владикавказ (8672)28-90-48
Владимир (4922)49-43-18
Волгоград (844)278-03-48
Вологда (8172)26-41-59
Воронеж (473)204-51-73
Екатеринбург (343)384-55-89

Иваново (4932)77-34-06
Ижевск (3412)26-03-58
Иркутск (395)279-98-46
Казань (843)206-01-48
Калининград (4012)72-03-81
Калуга (4842)92-23-67
Кемерово (3842)65-04-62
Киров (8332)68-02-04
Коломна (4966)23-41-49
Кострома (4942)77-07-48
Краснодар (861)203-40-90
Красноярск (391)204-63-61
Курск (4712)77-13-04
Курган (3522)50-90-47
Липецк (4742)52-20-81

Россия +7(495)268-04-70

Магнитогорск (3519)55-03-13
Москва (495)268-04-70
Мурманск (8152)59-64-93
Набережные Челны (8552)20-53-41
Нижний Новгород (831)429-08-12
Новокузнецк (3843)20-46-81
Новосибирск (383)227-86-73
Омск (3812)21-46-40
Орел (4862)44-53-42
Оренбург (3532)37-68-04
Пенза (8412)22-31-16
Петрозаводск (8142)55-98-37
Псков (8112)59-10-37
Пермь (342)205-81-47

Казахстан +7(7172)727-132

Ростов-на-Дону (863)308-18-15
Рязань (4912)46-61-64
Самара (846)206-03-16
Санкт-Петербург (812)309-46-40
Саратов (845)249-38-78
Севастополь (8692)22-31-93
Саранск (8342)22-96-24
Симферополь (3652)67-13-56
Смоленск (4812)29-41-54
Сочи (862)225-72-31
Ставрополь (8652)20-65-13
Сургут (3462)77-98-35
Сыктывкар (8212)25-95-17
Тамбов (4752)50-40-97
Тверь (4822)63-31-35

Киргизия +996(312)96-26-47

Тольятти (8482)63-91-07
Томск (3822)98-41-53
Тула (4872)33-79-87
Тюмень (3452)66-21-18
Ульяновск (8422)24-23-59
Улан-Удэ (3012)59-97-51
Уфа (347)229-48-12
Хабаровск (4212)92-98-04
Чебоксары (8352)28-53-07
Челябинск (351)202-03-61
Череповец (8202)49-02-64
Чита (3022)38-34-83
Якутск (4112)23-90-97
Ярославль (4852)69-52-93



Product description

heavy duty Swivel castor with brake with an overall height of 240 mm

Wheel diameter x width: 200 x 50 mm

Top plate with 4 mounting holes of 11 mm, mounting hole distance 105x80 mm and top plate outer dimensions: 140x110 mm

Wheel with ball bearing and injection-moulded polyurethane tread with hardness 92 ° Shore A on aluminium the double brake system, brakes the turning of the wheel and the swivel rotation.

Approved and tested load capacity

Dynamic 600 kg

Static 750 kg

Temperature range:

Continuous operation: -25 | -55°C

Short (10 min) exposure: -40 | +55°C


Advantages of this Indestructable footing Swivel castor with brake:

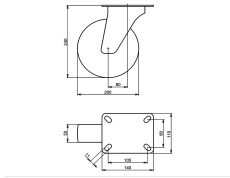
- ✓ burden transport
- ✓ resistance
- ✓ own weight

LIV SYSTEMS heavy duty Swivel castor with brake + injection-moulded polyurethane tread Ø200 x W50mm for 600kg Prod ID: 42415

ID 42415: Castor overall height 240 mm | 4 mounting holes with distance 105x80 mm | Wheel with ball bearing and injection-moulded polyurethane tread with hardness 92 ° Shore A | The double brake system, brakes the turning of the wheel and the swivel rotat

Product information

- 
- Article code 2-123-40K
 - SKU 42415
 - EAN 3838461424151



Product description

heavy duty Swivel castor with an overall height of 240 mm

Wheel diameter x width: 200 x 50 mm

Top plate with 4 mounting holes of 11 mm, mounting hole distance 105x80 mm and top plate outer dimensions: 140x110 mm

Wheel with ball bearing and injection-moulded polyurethane tread with hardness 92 ° Shore A on aluminium.

Approved and tested load capacity

Dynamic 800 kg

Static 1000 kg

Temperature range:

Continuous operation: -25 | -55°C

Short (10 min) exposure: -40 | +55°C

Advantages of this Indestructable footing Swivel castor:

- ✓ burden transport
- ✓ resistance
- ✓ own weight

LIV SYSTEMS heavy duty Swivel castor + injection-moulded polyurethane tread Ø200 x W50mm for 800kg Prod ID: 42404

ID 42404: Castor overall height 240 mm | 4 mounting holes with distance 105x80 mm | Wheel with ball bearing and injection-moulded polyurethane tread with hardness 92 ° Shore A | Indestructable footing, effortless burden transport, chemical resistance, low

Product information

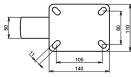
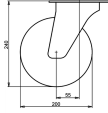
- Article code 2-122-40K
- SKU 42404
- EAN 3838461424045

Specifications

The result of our quality is maximum performance!

[Close](#)

[Close](#)



Product description

heavy duty Swivel castor with an overall height of 240 mm

Wheel diameter x width: 200 x 50 mm

Top plate with 4 mounting holes of 11 mm, mounting hole distance 105x80 mm and top plate outer dimensions: 140x110 mm

Wheel with ball bearing and solid polyamide wheel with hardness 70±5 Shore D.

Approved and tested load capacity

Dynamic 500 kg

Static 620 kg

Temperature range:

Continuous operation: -25 | +80°C

Short (10 min) exposure: -30 | +110°C

Advantages of this High load easy start Swivel castor:

- ✓ wearout
- ✓ effort to keep rolling
- ✓ to turn

LIV SYSTEMS heavy duty Swivel castor + solid polyamide wheel Ø200 x W50mm for 500kg Prod ID: 31793

ID 31793: Castor overall height 240 mm | 4 mounting holes with distance 105x80 mm | Wheel with ball bearing and solid polyamide wheel with hardness 70±5 Shore D | High load easy start, low wearout, little effort to keep rolling, easy to turn

Product information

- Article code 2-276 ISO
- SKU 31793
- EAN 3838461317934

Specifications

The result of our quality is maximum performance!

[Close](#)

[Close](#)



Product description

heavy duty Swivel castor with brake with an overall height of 240 mm

Wheel diameter x width: 200 x 50 mm

Top plate with 4 mounting holes of 11 mm, mounting hole distance 105x80 mm and top plate outer dimensions: 140x110 mm

Wheel with ball bearing and black rubber tyre with hardness 65 ° Shore A on aluminium
the double brake system, brakes the turning of the wheel and the swivel rotation.

Approved and tested load capacity

Dynamic 500 kg

Static 620 kg

Temperature range:

Continuous operation: -20 | +70°C

Short (10 min) exposure: -30 | +80°C

Advantages of this Firm and soft way Swivel castor with brake:

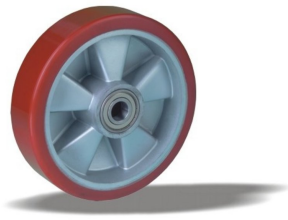
- ✓ moving of goods
- ✓ for uneven floor
- ✓ weight capacity

LIV SYSTEMS heavy duty Swivel castor with brake + black rubber tyre Ø200 x W50mm for 500kg Prod ID: 42375

ID 42375: Castor overall height 240 mm | 4 mounting holes with distance 105x80 mm | Wheel with ball bearing and black rubber tyre with hardness 65 ° Shore A | The double brake system, brakes the turning of the wheel and the swivel rotation. | Firm and so

Product information

- 
- Article code 2-113-40K
 - SKU 42375
 - EAN 3838461423758



Product description

heavy duty Wheel with ball bearing and injection-moulded polyurethane tread with hardness 92 ° Shore A on aluminium

Wheel diameter x width: 200 x 50 mm

Axle hole: 20 mm

Hub length: 60 mm

Approved and tested load capacity

Dynamic 800 kg

Static 1000 kg

Temperature range:

Continuous operation: -25 | -55°C

Short (10 min) exposure: -40 | +55°C

Advantages of this Indestructable footing wheel:

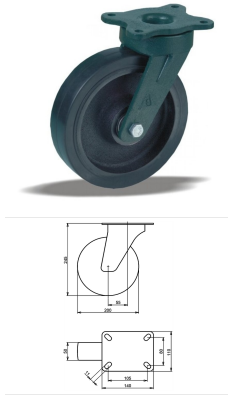
- ✓ burden transport
- ✓ resistance
- ✓ own weight

LIV SYSTEMS heavy duty wheel + injection-moulded polyurethane tread Ø200 x W50mm for 800kg Prod ID: 32894

ID 32894: heavy duty Wheel with ball bearing and injection-moulded polyurethane tread with hardness 92 ° Shore A on aluminium | Axle hole: 20 mm | Hub length: 60 mm | Indestructable footing, effortless burden transport, chemical resistance, low own weight

Product information

- Article code 2-120-40K
- SKU 32894
- EAN 3838461328947



Product description

heavy duty Swivel castor with an overall height of 245 mm

Wheel diameter x width: 200 x 50 mm

Top plate with 4 mounting holes of 11 mm, mounting hole distance 105x80 mm and top plate outer dimensions: 140x110 mm

Wheel with ball bearing and injection-moulded polyurethane tread with hardness 92 ° Shore A on cast iron.

Approved and tested load capacity

Dynamic 1000 kg

Static 1250 kg

Temperature range:

Continuous operation: -20 | +70°C

Short (10 min) exposure: -30 | +80°C

Advantages of this Eternal moving Swivel castor:

- ✓ losing shape being stationed
- ✓ to push
- ✓ for grainy floors

LIV SYSTEMS heavy duty Swivel castor + injection-moulded polyurethane tread Ø200 x W50mm for 1000kg Prod ID: 61003

ID 61003: Castor overall height 245 mm | 4 mounting holes with distance 105x80 mm | Wheel with ball bearing and injection-moulded polyurethane tread with hardness 92 ° Shore A | Eternal moving, not losing shape being stationed, easy to push, perfect for

Product information

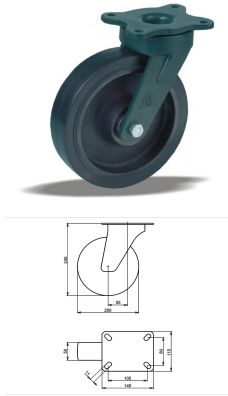
- Article code 2-370 ISO
- SKU 61003
- EAN 3838461610035

Specifications

The result of our quality is maximum performance!

[Close](#)

[Close](#)



Product description

heavy duty Swivel castor with an overall height of 245 mm

Wheel diameter x width: 200 x 50 mm

Top plate with 4 mounting holes of 11 mm, mounting hole distance 105x80 mm and top plate outer dimensions: 140x110 mm

Wheel with ball bearing and black rubber tyre with hardness 65 ° Shore A on cast iron.

Approved and tested load capacity

Dynamic 500 kg

Static 620 kg

Temperature range:

Continuous operation: -20 | +70°C

Short (10 min) exposure: -30 | +80°C

Advantages of this Customised floor transport Swivel castor:

- ✓ moving
- ✓ goods protected
- ✓ unfavourable environment

LIV SYSTEMS heavy duty Swivel castor + black rubber tyre Ø200 x W50mm for 500kg Prod ID: 55388

ID 55388: Castor overall height 245 mm | 4 mounting holes with distance 105x80 mm | Wheel with ball bearing and black rubber tyre with hardness 65 ° Shore A | Customised floor transport, silent moving, heavy goods protected, for unfavourable environment

Product information

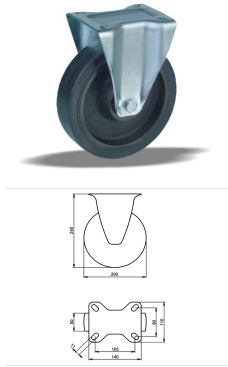
- Article code 2-315 ISO
- SKU 55388
- EAN 3838461553882

Specifications

The result of our quality is maximum performance!

[Close](#)

[Close](#)



Product description

heavy duty Fixed castor with an overall height of 240 mm

Wheel diameter x width: 200 x 50 mm

Top plate with 4 mounting holes of 11 mm, mounting hole distance 105x80 mm and top plate outer dimensions: 140x110 mm

Wheel with ball bearing and injection-moulded polyurethane tread with hardness 65 ° Shore A on cast iron.

Approved and tested load capacity

Dynamic 1000 kg

Static 1250 kg

Temperature range:

Continuous operation: -20 | +70°C

Short (10 min) exposure: -30 | +80°C

Advantages of this Gravity resisting Fixed castor:

- ✓ high loads
- ✓ deformation when stationed
- ✓ high and low temperatures

LIV SYSTEMS heavy duty Fixed castor + injection-moulded polyurethane tread Ø200 x W50mm for 1000kg Prod ID: 42444

ID 42444: Castor overall height 240 mm | 4 mounting holes with distance 105x80 mm | Wheel with ball bearing and injection-moulded polyurethane tread with hardness 65 ° Shore A | Gravity resisting, extremely high loads, no deformation when stationed, for hi

Product information

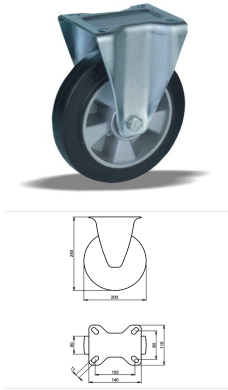
- Article code 2-141-40K
- SKU 42444
- EAN 3838461424441

Specifications

The result of our quality is maximum performance!

[Close](#)

[Close](#)



Product description

heavy duty Fixed castor with an overall height of 240 mm

Wheel diameter x width: 200 x 50 mm

Top plate with 4 mounting holes of 11 mm, mounting hole distance 105x80 mm and top plate outer dimensions: 140x110 mm

Wheel with ball bearing and black rubber tyre with hardness 65 ° Shore A on aluminium.

Approved and tested load capacity

Dynamic 500 kg

Static 620 kg

Temperature range:

Continuous operation: -20 | +70°C

Short (10 min) exposure: -30 | +80°C

Advantages of this Firm and soft way Fixed castor:

- ✓ moving of goods
- ✓ for uneven floor
- ✓ weight capacity

LIV SYSTEMS heavy duty Fixed castor + black rubber tyre Ø200 x W50mm for 500kg Prod ID: 42355

ID 42355: Castor overall height 240 mm | 4 mounting holes with distance 105x80 mm | Wheel with ball bearing and black rubber tyre with hardness 65 ° Shore A | Firm and soft way, quite moving of goods, made for uneven floor, high weight capacity

Product information

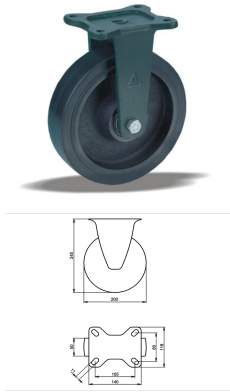
- Article code 2-111-40K
- SKU 42355
- EAN 3838461423550

Specifications

The result of our quality is maximum performance!

[Close](#)

[Close](#)



Product description

heavy duty Fixed castor with an overall height of 245 mm

Wheel diameter x width: 200 x 50 mm

Top plate with 4 mounting holes of 11 mm, mounting hole distance 105x80 mm and top plate outer dimensions: 140x118 mm

Wheel with ball bearing and black rubber tyre with hardness 65 ° Shore A on cast iron.

Approved and tested load capacity

Dynamic 500 kg

Static 620 kg

Temperature range:

Continuous operation: -20 | +70°C

Short (10 min) exposure: -30 | +80°C

Advantages of this Customised floor transport Fixed castor:

- ✓ moving
- ✓ goods protected
- ✓ unfavourable environment

LIV SYSTEMS heavy duty Fixed castor + black rubber tyre Ø200 x W50mm for 500kg Prod ID: 55372

ID 55372: Castor overall height 245 mm | 4 mounting holes with distance 105x80 mm | Wheel with ball bearing and black rubber tyre with hardness 65 ° Shore A | Customised floor transport, silent moving, heavy goods protected, for unfavourable environment

Product information

- Article code 2-325 ISO
- SKU 55372
- EAN 3838461553721

Specifications

The result of our quality is maximum performance!

[Close](#)

[Close](#)



Product description

heavy duty Wheel with ball bearing and black rubber tyre with hardness 65 ° Shore A on aluminium

Wheel diameter x width: 200 x 50 mm

Axle hole: 20 mm

Hub length: 60 mm

Approved and tested load capacity

Dynamic 500 kg

Static 620 kg

Temperature range:

Continuous operation: -20 | +70°C

Short (10 min) exposure: -30 | +80°C

Advantages of this Firm and soft way wheel:

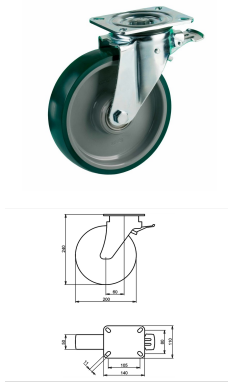
- ✓ moving of goods
- ✓ for uneven floor
- ✓ weight capacity

LIV SYSTEMS heavy duty wheel + black rubber tyre Ø200 x W50mm for 500kg Prod ID: 42515

ID 42515:heavy duty Wheel with ball bearing and black rubber tyre with hardness 65 ° Shore A on aluminium | Axle hole: 20 mm | Hub length: 60 mm | Firm and soft way, quite moving of goods, made for uneven floor, high weight capacity

Product information

- Article code 2-110-40K
- SKU 42515
- EAN 3838461425158



Product description

heavy duty Swivel castor with brake with an overall height of 240 mm

Wheel diameter x width: 200 x 50 mm

Top plate with 4 mounting holes of 11 mm, mounting hole distance 105x80 mm and top plate outer dimensions: 140x110 mm

Wheel with plain bearing and injection-moulded polyurethane tread with hardness 92 ° Shore A on polyamide

the double brake system, brakes the turning of the wheel and the swivel rotation.

Approved and tested load capacity

Dynamic 500 kg

Static 620 kg

Temperature range:

Continuous operation: -25 | +55°C

Short (10 min) exposure: -30 | +55°C

Advantages of this Power ride Swivel castor with brake:

- ✓ chemical resistance
- ✓ surface pressure
- ✓ force to start

LIV SYSTEMS heavy duty Swivel castor with brake + injection-moulded polyurethane tread Ø200 x W50mm for 500kg Prod ID: 42614

ID 42614: Castor overall height 240 mm | 4 mounting holes with distance 105x80 mm | Wheel with plain bearing and injection-moulded polyurethane tread with hardness 92 ° Shore A | The double brake system, brakes the turning of the wheel and the swivel rot

Product information

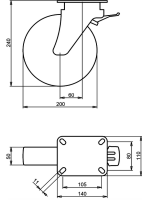
- Article code 2-083-40D
- SKU 42614
- EAN 3838461426148

Specifications

The result of our quality is maximum performance!

[Close](#)

[Close](#)



Product description

heavy duty Swivel castor with brake with an overall height of 240 mm

Wheel diameter x width: 200 x 50 mm

Top plate with 4 mounting holes of 11 mm, mounting hole distance 105x80 mm and top plate outer dimensions: 140x110 mm

Wheel with ball bearing and solid polyamide wheel with hardness 70±5 Shore D
the double brake system, brakes the turning of the wheel and the swivel rotation.

Approved and tested load capacity

Dynamic 500 kg

Static 620 kg

Temperature range:

Continuous operation: -25 | +80°C

Short (10 min) exposure: -30 | +110°C

Advantages of this High load easy start Swivel castor with brake:

- ✓ wearout
- ✓ effort to keep rolling
- ✓ to turn

LIV SYSTEMS heavy duty Swivel castor with brake + solid polyamide wheel Ø200 x W50mm for 500kg Prod ID: 42574

ID 42574: Castor overall height 240 mm | 4 mounting holes with distance 105x80 mm | Wheel with ball bearing and solid polyamide wheel with hardness 70±5 Shore D | The double brake system, brakes the turning of the wheel and the swivel rotation. | High lo

Product information

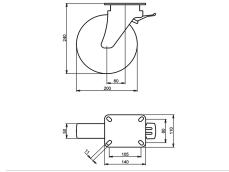
- Article code 2-063-40K
- SKU 42574
- EAN 3838461425745

Specifications

The result of our quality is maximum performance!

[Close](#)

[Close](#)



Product description

heavy duty Swivel castor with brake with an overall height of 240 mm

Wheel diameter x width: 200 x 50 mm

Top plate with 4 mounting holes of 11 mm, mounting hole distance 105x80 mm and top plate outer dimensions: 140x110 mm

Wheel with ball bearing and solid polyamide wheel with hardness 70±5 Shore D
the double brake system, brakes the turning of the wheel and the swivel rotation.

Approved and tested load capacity

Dynamic 500 kg

Static 620 kg

Temperature range:

Continuous operation: -25 | +80°C

Short (10 min) exposure: -30 | +110°C

Advantages of this High load easy start Swivel castor with brake:

- ✓ wearout
- ✓ effort to keep rolling
- ✓ to turn

LIV SYSTEMS heavy duty Swivel castor with brake + solid polyamide wheel Ø200 x W50mm for 500kg Prod ID: 42583

ID 42583: Castor overall height 240 mm | 4 mounting holes with distance 105x80 mm | Wheel with ball bearing and solid polyamide wheel with hardness 70±5 Shore D | The double brake system, brakes the turning of the wheel and the swivel rotation. | High lo

Product information

- Article code 2-063-40K
- SKU 42583
- EAN 3838461425837

Specifications

The result of our quality is maximum performance!

[Close](#)

[Close](#)



Product description

heavy duty Fixed castor with an overall height of 245 mm

Wheel diameter x width: 200 x 50 mm

Top plate with 4 mounting holes of 11 mm, mounting hole distance 105x80 mm and top plate outer dimensions: 135x110 mm

Wheel with ball bearing and solid cast iron wheel with hardness 180-220 ° 180-220 HB.

Approved and tested load capacity

Dynamic 1100 kg

Static 1370 kg

Temperature range:

Continuous operation: -40 | +130°C

Short (10 min) exposure: -40 | +130°C

Advantages of this titanic move Fixed castor:

- ✓ high and low temperatures
- ✓ robust handling
- ✓ proof

LIV SYSTEMS heavy duty Fixed castor + solid cast iron wheel Ø200 x W50mm for 1100kg Prod ID: 56209

ID 56209: Castor overall height 245 mm | 4 mounting holes with distance 105x80 mm | Wheel with ball bearing and solid cast iron wheel with hardness 180-220 ° 180-220 HB | titanic move, for high and low temperatures, for robust handling, damage proof

Product information

- Article code 2-345 ISO
- SKU 56209
- EAN 3838461562099

Specifications

The result of our quality is maximum performance!

[Close](#)

[Close](#)



Product description

heavy duty Wheel with ball bearing and solid cast iron wheel with hardness 180-220 ° 180-220 HB

Wheel diameter x width: 200 x 50 mm

Axle hole: 20 mm

Hub length: 60 mm

Approved and tested load capacity

Dynamic 1100 kg

Static 1370 kg

Temperature range:

Continuous operation: -40 | +130°C

Short (10 min) exposure: -40 | +130°C

Advantages of this Heavyweight runner wheel:

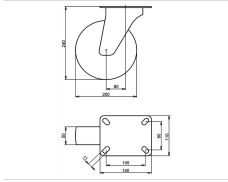
- ✓ proof
- ✓ rolling resistance
- ✓ substantial temperature change

LIV SYSTEMS heavy duty wheel + solid cast iron wheel Ø200 x W50mm for 1100kg Prod ID: 35555

ID 35555: heavy duty Wheel with ball bearing and solid cast iron wheel with hardness 180-220 ° 180-220 HB | Axle hole: 20 mm | Hub length: 60 mm | Heavyweight runner, wareout proof, low rolling resistance, for substantial temperature change

Product information

- Article code 2-150-40K
- SKU 35555
- EAN 3838461355554



Product description

heavy duty Swivel castor with an overall height of 240 mm

Wheel diameter x width: 200 x 50 mm

Top plate with 4 mounting holes of 11 mm, mounting hole distance 105x80 mm and top plate outer dimensions: 140x110 mm

Wheel with ball bearing and solid cast iron wheel with hardness 180-220 ° 180-220 HB.

Approved and tested load capacity

Dynamic 800 kg

Static 1000 kg

Temperature range:

Continuous operation: -40 | +130°C

Short (10 min) exposure: -40 | +130°C

Advantages of this Heavyweight runner Swivel castor:

- ✓ proof
- ✓ rolling resistance
- ✓ substantial temperature change

LIV SYSTEMS heavy duty Swivel castor + solid cast iron wheel Ø200 x W50mm for 800kg Prod ID: 55391

ID 55391: Castor overall height 240 mm | 4 mounting holes with distance 105x80 mm | Wheel with ball bearing and solid cast iron wheel with hardness 180-220 ° 180-220 HB
| Heavyweight runner, wareout proof, low rolling resistance, for substantial temperatu

Product information

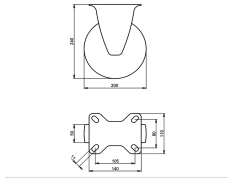
- Article code 2-152-40K
- SKU 55391
- EAN 3838461553912

Specifications

The result of our quality is maximum performance!

[Close](#)

[Close](#)



Product description

heavy duty Fixed castor with an overall height of 240 mm

Wheel diameter x width: 200 x 50 mm

Top plate with 4 mounting holes of 11 mm, mounting hole distance 105x80 mm and top plate outer dimensions: 140x110 mm

Wheel with ball bearing and solid cast iron wheel with hardness 65 ° Shore A.

Approved and tested load capacity

Dynamic 800 kg

Static 1000 kg

Temperature range:

Continuous operation: -40 | +130°C

Short (10 min) exposure: -40 | +130°C

Advantages of this Heavyweight runner Fixed castor:

- ✓ proof
- ✓ rolling resistance
- ✓ substantial temperature change

LIV SYSTEMS heavy duty Fixed castor + solid cast iron wheel Ø200 x W50mm for 800kg Prod ID: 56395

ID 56395: Castor overall height 240 mm | 4 mounting holes with distance 105x80 mm | Wheel with ball bearing and solid cast iron wheel with hardness 65 ° Shore A |

Heavyweight runner, wareout proof, low rolling resistance, for substantial temperature chang

Product information

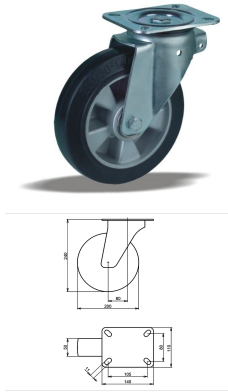
- Article code 2-151-40K
- SKU 56395
- EAN 3838461563959

Specifications

The result of our quality is maximum performance!

[Close](#)

[Close](#)



Product description

heavy duty Swivel castor with an overall height of 240 mm

Wheel diameter x width: 200 x 50 mm

Top plate with 4 mounting holes of 11 mm, mounting hole distance 105x80 mm and top plate outer dimensions: 140x110 mm

Wheel with ball bearing and black rubber tyre with hardness 65 ° Shore A on aluminium.

Approved and tested load capacity

Dynamic 500 kg

Static 620 kg

Temperature range:

Continuous operation: -20 | +70°C

Short (10 min) exposure: -30 | +80°C

Advantages of this Firm and soft way Swivel castor:

- ✓ moving of goods
- ✓ for uneven floor
- ✓ weight capacity

LIV SYSTEMS heavy duty Swivel castor + black rubber tyre Ø200 x W50mm for 500kg Prod ID: 42365

ID 42365: Castor overall height 240 mm | 4 mounting holes with distance 105x80 mm | Wheel with ball bearing and black rubber tyre with hardness 65 ° Shore A | Firm and soft way, quite moving of goods, made for uneven floor, high weight capacity

Product information

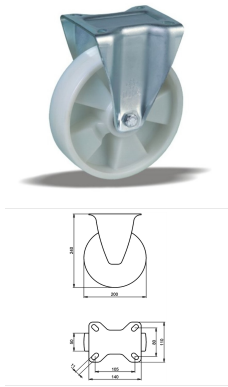
- Article code 2-112-40K
- SKU 42365
- EAN 3838461423659

Specifications

The result of our quality is maximum performance!

[Close](#)

[Close](#)



Product description

heavy duty Fixed castor with an overall height of 240 mm

Wheel diameter x width: 200 x 50 mm

Top plate with 4 mounting holes of 11 mm, mounting hole distance 105x80 mm and top plate outer dimensions: 140x110 mm

Wheel with ball bearing and solid polyamide wheel with hardness 70±5 Shore D.

Approved and tested load capacity

Dynamic 500 kg

Static 620 kg

Temperature range:

Continuous operation: -25 | +80°C

Short (10 min) exposure: -30 | +110°C

Advantages of this High load easy start Fixed castor:

- ✓ wearout
- ✓ effort to keep rolling
- ✓ to turn

LIV SYSTEMS heavy duty Fixed castor + solid polyamide wheel Ø200 x W50mm for 500kg Prod ID: 22830

ID 22830: Castor overall height 240 mm | 4 mounting holes with distance 105x80 mm | Wheel with ball bearing and solid polyamide wheel with hardness 70±5 Shore D | High load easy start, low wearout, little effort to keep rolling, easy to turn

Product information

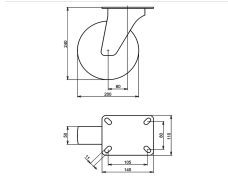
- Article code 2-246 ISO
- SKU 22830
- EAN 3838461228308

Specifications

The result of our quality is maximum performance!

[Close](#)

[Close](#)



Product description

heavy duty Swivel castor with an overall height of 240 mm

Wheel diameter x width: 200 x 50 mm

Top plate with 4 mounting holes of 11 mm, mounting hole distance 105x80 mm and top plate outer dimensions: 140x110 mm

Wheel with ball bearing and injection-moulded polyurethane tread with hardness 92 ° Shore A on polyamide.

Approved and tested load capacity

Dynamic 500 kg

Static 620 kg

Temperature range:

Continuous operation: -25 | +55°C

Short (10 min) exposure: -30 | +55°C

Advantages of this Power ride Swivel castor:

- ✓ chemical resistance
- ✓ surface pressure
- ✓ force to start

LIV SYSTEMS heavy duty Swivel castor + injection-moulded polyurethane tread Ø200 x W50mm for 500kg Prod ID: 42593

ID 42593: Castor overall height 240 mm | 4 mounting holes with distance 105x80 mm | Wheel with ball bearing and injection-moulded polyurethane tread with hardness 92 ° Shore A | Power ride, wide chemical resistance, small surface pressure, low force to start

Product information

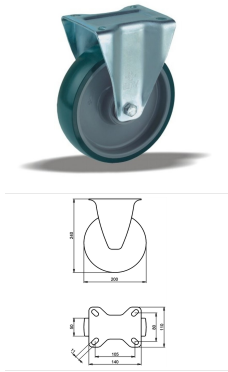
- Article code 2-082-40K
- SKU 42593
- EAN 3838461425936

Specifications

The result of our quality is maximum performance!

[Close](#)

[Close](#)



Product description

heavy duty Fixed castor with an overall height of 240 mm

Wheel diameter x width: 200 x 50 mm

Top plate with 4 mounting holes of 11 mm, mounting hole distance 105x80 mm and top plate outer dimensions: 140x110 mm

Wheel with plain bearing and injection-moulded polyurethane tread with hardness 92 ° Shore A on polyamide.

Approved and tested load capacity

Dynamic 500 kg

Static 620 kg

Temperature range:

Continuous operation: -25 | +55°C

Short (10 min) exposure: -30 | +55°C

Advantages of this Power ride Fixed castor:

- ✓ chemical resistance
- ✓ surface pressure
- ✓ force to start

LIV SYSTEMS heavy duty Fixed castor + injection-moulded polyurethane tread Ø200 x W50mm for 500kg Prod ID: 42634

ID 42634: Castor overall height 240 mm | 4 mounting holes with distance 105x80 mm | Wheel with plain bearing and injection-moulded polyurethane tread with hardness 92 ° Shore A | Power ride, wide chemical resistance, small surface pressure, low force to

Product information

- Article code 2-081-40D
- SKU 42634
- EAN 3838461426346

Specifications

The result of our quality is maximum performance!

[Close](#)

[Close](#)



Product description

heavy duty Wheel with ball bearing and solid polyamide wheel with hardness 70±5 Shore D

Wheel diameter x width: 200 x 50 mm

Axle hole: 20 mm

Hub length: 60 mm

Approved and tested load capacity

Dynamic 500 kg

Static 620 kg

Temperature range:

Continuous operation: -25 | +80°C

Short (10 min) exposure: -30 | +110°C

Advantages of this High load easy start wheel:

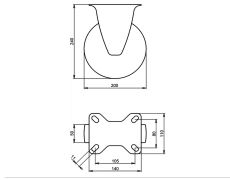
- ✓ wearout
- ✓ effort to keep rolling
- ✓ to turn

LIV SYSTEMS heavy duty wheel + solid polyamide wheel Ø200 x W50mm for 500kg Prod ID: 35603

ID 35603: heavy duty Wheel with ball bearing and solid polyamide wheel with hardness 70±5 Shore D | Axle hole: 20 mm | Hub length: 60 mm | High load easy start, low wearout, little effort to keep rolling, easy to turn

Product information

- Article code 2-277 ISO
- SKU 35603
- EAN 3838461356032



Product description

heavy duty Fixed castor with an overall height of 240 mm

Wheel diameter x width: 200 x 50 mm

Top plate with 4 mounting holes of 11 mm, mounting hole distance 105x80 mm and top plate outer dimensions: 140x110 mm

Wheel with ball bearing and solid polyamide wheel with hardness 70±5 Shore D.

Approved and tested load capacity

Dynamic 500 kg

Static 620 kg

Temperature range:

Continuous operation: -25 | +80°C

Short (10 min) exposure: -30 | +110°C

Advantages of this High load easy start Fixed castor:

- ✓ wearout
- ✓ effort to keep rolling
- ✓ to turn

LIV SYSTEMS heavy duty Fixed castor + solid polyamide wheel Ø200 x W50mm for 500kg Prod ID: 56586

ID 56586: Castor overall height 240 mm | 4 mounting holes with distance 105x80 mm | Wheel with ball bearing and solid polyamide wheel with hardness 70±5 Shore D | High load easy start, low wearout, little effort to keep rolling, easy to turn

Product information

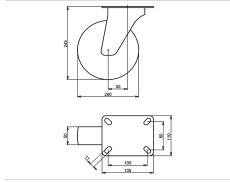
- Article code 2-246 ISO
- SKU 56586
- EAN 3838461565861

Specifications

The result of our quality is maximum performance!

[Close](#)

[Close](#)



Product description

heavy duty Swivel castor with an overall height of 245 mm

Wheel diameter x width: 200 x 50 mm

Top plate with 4 mounting holes of 11 mm, mounting hole distance 105x80 mm and top plate outer dimensions: 135x110 mm

Wheel with ball bearing and solid cast iron wheel with hardness 180-220 ° 180-220 HB.

Approved and tested load capacity

Dynamic 1100 kg

Static 1370 kg

Temperature range:

Continuous operation: -40 | +130°C

Short (10 min) exposure: -40 | +130°C

Advantages of this titanic move Swivel castor:

- ✓ high and low temperatures
- ✓ robust handling
- ✓ proof

LIV SYSTEMS heavy duty Swivel castor + solid cast iron wheel Ø200 x W50mm for 1100kg Prod ID: 56200

ID 56200: Castor overall height 245 mm | 4 mounting holes with distance 105x80 mm | Wheel with ball bearing and solid cast iron wheel with hardness 180-220 ° 180-220 HB | titanic move, for high and low temperatures, for robust handling, damage proof

Product information

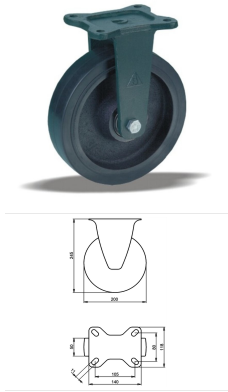
- Article code 2-335 ISO
- SKU 56200
- EAN 3838461562006

Specifications

The result of our quality is maximum performance!

[Close](#)

[Close](#)



Product description

heavy duty Fixed castor with an overall height of 245 mm

Wheel diameter x width: 200 x 50 mm

Top plate with 4 mounting holes of 11 mm, mounting hole distance 105x80 mm and top plate outer dimensions: 140x118 mm

Wheel with ball bearing and injection-moulded polyurethane tread with hardness 92 ° Shore A on cast iron.

Approved and tested load capacity

Dynamic 1000 kg

Static 1250 kg

Temperature range:

Continuous operation: -20 | +70°C

Short (10 min) exposure: -30 | +80°C

Advantages of this Eternal moving Fixed castor:

- ✓ losing shape being stationed
- ✓ to push
- ✓ for grainy floors

LIV SYSTEMS heavy duty Fixed castor + injection-moulded polyurethane tread Ø200 x W50mm for 1000kg Prod ID: 61004

ID 61004: Castor overall height 245 mm | 4 mounting holes with distance 105x80 mm | Wheel with ball bearing and injection-moulded polyurethane tread with hardness 92 ° Shore A | Eternal moving, not losing shape being stationed, easy to push, perfect for

Product information

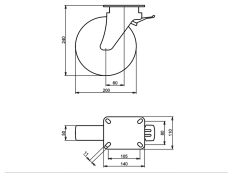
- Article code 2-330 ISO
- SKU 61004
- EAN 3838461610042

Specifications

The result of our quality is maximum performance!

[Close](#)

[Close](#)



Product description

heavy duty Swivel castor with brake with an overall height of 240 mm

Wheel diameter x width: 200 x 50 mm

Top plate with 4 mounting holes of 11 mm, mounting hole distance 105x80 mm and top plate outer dimensions: 140x110 mm

Wheel with ball bearing and solid cast iron wheel with hardness 180-220 ° 180-220 HB

the double brake system, brakes the turning of the wheel and the swivel rotation.

Approved and tested load capacity

Dynamic 800 kg

Static 1000 kg

Temperature range:

Continuous operation: -40 | +130°C

Short (10 min) exposure: -40 | +130°C

Advantages of this Heavyweight runner Swivel castor with brake:

- ✓ proof
- ✓ rolling resistance
- ✓ substantial temperature change

LIV SYSTEMS heavy duty Swivel castor with brake + solid cast iron wheel Ø200 x W50mm for 800kg Prod ID: 42533

ID 42533: Castor overall height 240 mm | 4 mounting holes with distance 105x80 mm | Wheel with ball bearing and solid cast iron wheel with hardness 180-220 ° 180-220 HB

| The double brake system, brakes the turning of the wheel and the swivel rotation. |

Product information

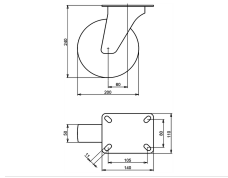
- Article code 2-153-40K
- SKU 42533
- EAN 3838461425332

Specifications

The result of our quality is maximum performance!

[Close](#)

[Close](#)



Product description

heavy duty Swivel castor with an overall height of 240 mm

Wheel diameter x width: 200 x 50 mm

Top plate with 4 mounting holes of 11 mm, mounting hole distance 105x80 mm and top plate outer dimensions: 140x110 mm

Wheel with ball bearing and injection-moulded polyurethane tread with hardness 65 ° Shore A on cast iron.

Approved and tested load capacity

Dynamic 1000 kg

Static 1250 kg

Temperature range:

Continuous operation: -20 | +70°C

Short (10 min) exposure: -30 | +80°C

Advantages of this Gravity resisting Swivel castor:

- ✓ high loads
- ✓ deformation when stationed
- ✓ by rough textures

LIV SYSTEMS heavy duty Swivel castor + injection-moulded polyurethane tread Ø200 x W50mm for 1000kg Prod

ID: 42453

ID 42453: Castor overall height 240 mm | 4 mounting holes with distance 105x80 mm | Wheel with ball bearing and injection-moulded polyurethane tread with hardness 65 ° Shore A | Gravity resisting, extremely high loads, no deformation when stationed, uncontact

Product information

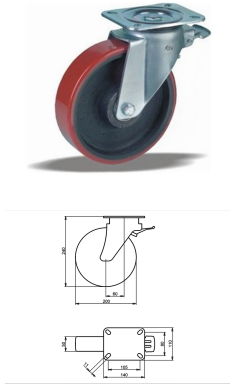
- Article code 2-142-40K
- SKU 42453
- EAN 3838461424533

Specifications

The result of our quality is maximum performance!

[Close](#)

[Close](#)



Product description

heavy duty Swivel castor with brake with an overall height of 240 mm

Wheel diameter x width: 200 x 50 mm

Top plate with 4 mounting holes of 11 mm, mounting hole distance 105x80 mm and top plate outer dimensions: 140x110 mm

Wheel with ball bearing and injection-moulded polyurethane tread with hardness 65 ° Shore A on cast iron

the double brake system, brakes the turning of the wheel and the swivel rotation.

Approved and tested load capacity

Dynamic 1000 kg

Static 1250 kg

Temperature range:

Continuous operation: -20 | +70°C

Short (10 min) exposure: -30 | +80°C

Advantages of this Gravity resisting Swivel castor with brake:

- ✓ high loads
- ✓ deformation when stationed
- ✓ by rough textures

LIV SYSTEMS heavy duty Swivel castor with brake + injection-moulded polyurethane tread Ø200 x W50mm for 1000kg Prod ID: 42455

ID 42455: Castor overall height 240 mm | 4 mounting holes with distance 105x80 mm | Wheel with ball bearing and injection-moulded polyurethane tread with hardness 65 ° Shore A | The double brake system, brakes the turning of the wheel and the swivel rotat

Product information

- Article code 2-143-40K
- SKU 42455
- EAN 3838461424557

Specifications

The result of our quality is maximum performance!

[Close](#)

[Close](#)



Product description

heavy duty Wheel with ball bearing and injection-moulded polyurethane tread with hardness 65 ° Shore A on cast iron

Wheel diameter x width: 200 x 50 mm

Axle hole: 20 mm

Hub length: 60 mm

Approved and tested load capacity

Dynamic 1000 kg

Static 1250 kg

Temperature range:

Continuous operation: -20 | +70°C

Short (10 min) exposure: -30 | +80°C

Advantages of this Gravity resisting wheel:

- ✓ high loads
- ✓ deformation when long stationed
- ✓ by rough textures

LIV SYSTEMS heavy duty wheel + injection-moulded polyurethane tread Ø200 x W50mm for 1000kg Prod ID: 42504

ID 42504: heavy duty Wheel with ball bearing and injection-moulded polyurethane tread with hardness 65 ° Shore A on cast iron | Axle hole: 20 mm | Hub length: 60 mm | Gravity resisting, extremely high loads, no deformation when long stationed, untact by rou

Product information

- Article code 2-140-40K
- SKU 42504
- EAN 3838461425042



Product description

heavy duty Wheel with ball bearing and black rubber tyre with hardness 65 ° Shore A on cast iron

Wheel diameter x width: 200 x 50 mm

Axle hole: 20 mm

Hub length: 60 mm

Approved and tested load capacity

Dynamic 600 kg

Static 750 kg

Temperature range:

Continuous operation: -20 | +70°C

Short (10 min) exposure: -30 | +80°C

Advantages of this Heavy floor convey wheel:

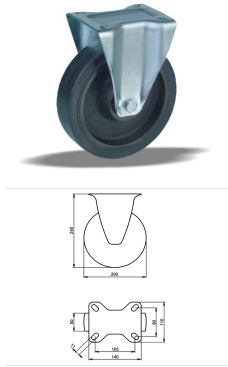
- ✓ friendly
- ✓ surpassing obstacles
- ✓ loads smooth ride

LIV SYSTEMS heavy duty wheel + black rubber tyre Ø200 x W50mm for 600kg Prod ID: 42513

ID 42513: heavy duty Wheel with ball bearing and black rubber tyre with hardness 65 ° Shore A on cast iron | Axle hole: 20 mm | Hub length: 60 mm | Heavy floor convey, floor friendly, easily surpassing obstacles, weightly loads smooth ride

Product information

- Article code 2-130-40K
- SKU 42513
- EAN 3838461425134



Product description

heavy duty Fixed castor with an overall height of 240 mm

Wheel diameter x width: 200 x 50 mm

Top plate with 4 mounting holes of 11 mm, mounting hole distance 105x80 mm and top plate outer dimensions: 140x110 mm

Wheel with ball bearing and black rubber tyre with hardness 65 ° Shore A on cast iron.

Approved and tested load capacity

Dynamic 600 kg

Static 750 kg

Temperature range:

Continuous operation: -20 | +70°C

Short (10 min) exposure: -30 | +80°C

Advantages of this Heavy floor convey Fixed castor:

- ✓ friendly
- ✓ surpassing obstacles
- ✓ loads smooth ride

LIV SYSTEMS heavy duty Fixed castor + black rubber tyre Ø200 x W50mm for 600kg Prod ID: 42424

ID 42424: Castor overall height 240 mm | 4 mounting holes with distance 105x80 mm | Wheel with ball bearing and black rubber tyre with hardness 65 ° Shore A | Heavy floor convey, floor friendly, easily surpassing obstacles, weightly loads smooth ride

Product information

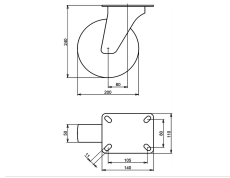
- Article code 2-131-40K
- SKU 42424
- EAN 3838461424243

Specifications

The result of our quality is maximum performance!

[Close](#)

[Close](#)



Product description

heavy duty Swivel castor with an overall height of 240 mm

Wheel diameter x width: 200 x 50 mm

Top plate with 4 mounting holes of 11 mm, mounting hole distance 105x80 mm and top plate outer dimensions: 140x110 mm

Wheel with ball bearing and black rubber tyre with hardness 65 ° Shore A on cast iron.

Approved and tested load capacity

Dynamic 600 kg

Static 750 kg

Temperature range:

Continuous operation: -20 | +70°C

Short (10 min) exposure: -30 | +80°C

Advantages of this Heavy floor convey Swivel castor:

- ✓ friendly
- ✓ surpassing obstacles
- ✓ loads smooth ride

LIV SYSTEMS heavy duty Swivel castor + black rubber tyre Ø200 x W50mm for 600kg Prod ID: 42433

ID 42433: Castor overall height 240 mm | 4 mounting holes with distance 105x80 mm | Wheel with ball bearing and black rubber tyre with hardness 65 ° Shore A | Heavy floor convey, floor friendly, easily surpassing obstacles, weightly loads smooth ride

Product information

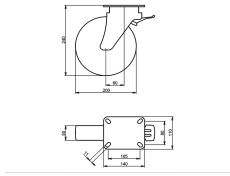
- Article code 2-132-40K
- SKU 42433
- EAN 3838461424335

Specifications

The result of our quality is maximum performance!

[Close](#)

[Close](#)



Product description

heavy duty Swivel castor with brake with an overall height of 240 mm

Wheel diameter x width: 200 x 50 mm

Top plate with 4 mounting holes of 11 mm, mounting hole distance 105x80 mm and top plate outer dimensions: 140x110 mm

Wheel with ball bearing and black rubber tyre with hardness 65 ° Shore A on cast iron

the double brake system, brakes the turning of the wheel and the swivel rotation.

Approved and tested load capacity

Dynamic 600 kg

Static 750 kg

Temperature range:

Continious operation: -20 | +70°C

Short (10 min) exposure: -30 | +80°C

Advantages of this Heavy floor convey Swivel castor with brake:

- ✓ friendly
- ✓ surpassing obstacles
- ✓ loads smooth ride

LIV SYSTEMS heavy duty Swivel castor with brake + black rubber tyre Ø200 x W50mm for 600kg Prod ID: 42435

ID 42435: Castor overall height 240 mm | 4 mounting holes with distance 105x80 mm | Wheel with ball bearing and black rubber tyre with hardness 65 ° Shore A | The double brake system, brakes the turning of the wheel and the swivel rotation. | Heavy floor

Product information

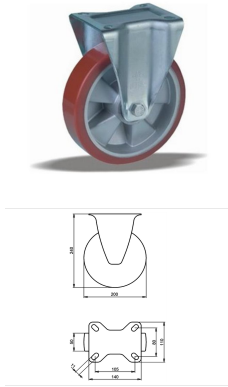
- Article code 2-133-40K
- SKU 42435
- EAN 3838461424359

Specifications

The result of our quality is maximum performance!

[Close](#)

[Close](#)



Product description

heavy duty Fixed castor with an overall height of 240 mm

Wheel diameter x width: 200 x 50 mm

Top plate with 4 mounting holes of 11 mm, mounting hole distance 105x80 mm and top plate outer dimensions: 140x110 mm

Wheel with ball bearing and injection-moulded polyurethane tread with hardness 92 ° Shore A on aluminium.

Approved and tested load capacity

Dynamic 600 kg

Static 750 kg

Temperature range:

Continuous operation: -25 | -55°C

Short (10 min) exposure: -40 | +55°C

Advantages of this Indestructable footing Fixed castor:

- ✓ burden transport
- ✓ resistance
- ✓ own weight

LIV SYSTEMS heavy duty Fixed castor + injection-moulded polyurethane tread Ø200 x W50mm for 600kg Prod ID: 42393

ID 42393: Castor overall height 240 mm | 4 mounting holes with distance 105x80 mm | Wheel with ball bearing and injection-moulded polyurethane tread with hardness 92 ° Shore A | Indestructable footing, effortless burden transport, chemical resistance, low

Product information

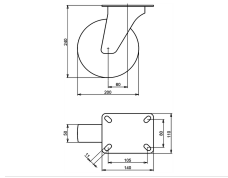
- Article code 2-121-40K
- SKU 42393
- EAN 3838461423932

Specifications

The result of our quality is maximum performance!

[Close](#)

[Close](#)



Product description

heavy duty Swivel castor with an overall height of 240 mm

Wheel diameter x width: 200 x 50 mm

Top plate with 4 mounting holes of 11 mm, mounting hole distance 105x80 mm and top plate outer dimensions: 140x110 mm

Wheel with plain bearing and injection-moulded polyurethane tread with hardness 92 ° Shore A on polyamide.

Approved and tested load capacity

Dynamic 500 kg

Static 620 kg

Temperature range:

Continuous operation: -25 | +55°C

Short (10 min) exposure: -30 | +55°C

Advantages of this Power ride Swivel castor:

- ✓ chemical resistance
- ✓ surface pressure
- ✓ force to start

LIV SYSTEMS heavy duty Swivel castor + injection-moulded polyurethane tread Ø200 x W50mm for 500kg Prod ID: 42595

ID 42595: Castor overall height 240 mm | 4 mounting holes with distance 105x80 mm | Wheel with plain bearing and injection-moulded polyurethane tread with hardness 92 ° Shore A | Power ride, wide chemical resistance, small surface pressure, low force to

Product information

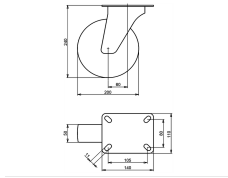
- Article code 2-082-40D
- SKU 42595
- EAN 3838461425950

Specifications

The result of our quality is maximum performance!

[Close](#)

[Close](#)



Product description

heavy duty Swivel castor with an overall height of 240 mm

Wheel diameter x width: 200 x 50 mm

Top plate with 4 mounting holes of 11 mm, mounting hole distance 105x80 mm and top plate outer dimensions: 140x110 mm

Wheel with roller bearing and injection-moulded polyurethane tread with hardness 92 ° Shore A on polyamide.

Approved and tested load capacity

Dynamic 500 kg

Static 620 kg

Temperature range:

Continuous operation: -25 | +55°C

Short (10 min) exposure: -30 | +55°C

Advantages of this Power ride Swivel castor:

- ✓ chemical resistance
- ✓ surface pressure
- ✓ force to start

LIV SYSTEMS heavy duty Swivel castor + injection-moulded polyurethane tread Ø200 x W50mm for 500kg Prod ID: 42594

ID 42594: Castor overall height 240 mm | 4 mounting holes with distance 105x80 mm | Wheel with roller bearing and injection-moulded polyurethane tread with hardness 92 ° Shore A | Power ride, wide chemical resistance, small surface pressure, low force to

Product information

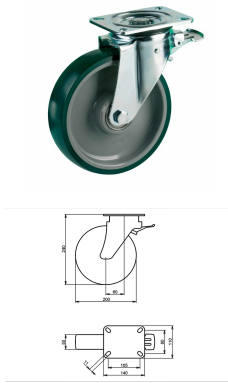
- Article code 2-082-40V
- SKU 42594
- EAN 3838461425943

Specifications

The result of our quality is maximum performance!

[Close](#)

[Close](#)



Product description

heavy duty Swivel castor with brake with an overall height of 240 mm

Wheel diameter x width: 200 x 50 mm

Top plate with 4 mounting holes of 11 mm, mounting hole distance 105x80 mm and top plate outer dimensions: 140x110 mm

Wheel with roller bearing and injection-moulded polyurethane tread with hardness 92 ° Shore A on polyamide

the double brake system, brakes the turning of the wheel and the swivel rotation.

Approved and tested load capacity

Dynamic 500 kg

Static 620 kg

Temperature range:

Continuous operation: -25 | +55°C

Short (10 min) exposure: -30 | +55°C

Advantages of this Power ride Swivel castor with brake:

- ✓ chemical resistance
- ✓ surface pressure
- ✓ force to start

LIV SYSTEMS heavy duty Swivel castor with brake + injection-moulded polyurethane tread Ø200 x W50mm for 500kg Prod ID: 42613

ID 42613: Castor overall height 240 mm | 4 mounting holes with distance 105x80 mm | Wheel with roller bearing and injection-moulded polyurethane tread with hardness 92 ° Shore A | The double brake system, brakes the turning of the wheel and the swivel ro

Product information

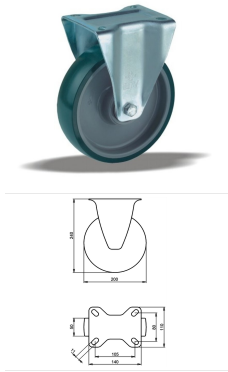
- Article code 2-083-40V
- SKU 42613
- EAN 3838461426131

Specifications

The result of our quality is maximum performance!

[Close](#)

[Close](#)



Product description

heavy duty Fixed castor with an overall height of 240 mm

Wheel diameter x width: 200 x 50 mm

Top plate with 4 mounting holes of 11 mm, mounting hole distance 105x80 mm and top plate outer dimensions: 140x110 mm

Wheel with roller bearing and injection-moulded polyurethane tread with hardness 92 ° Shore A on polyamide.

Approved and tested load capacity

Dynamic 500 kg

Static 620 kg

Temperature range:

Continuous operation: -25 | +55°C

Short (10 min) exposure: -30 | +55°C

Advantages of this Power ride Fixed castor:

- ✓ chemical resistance
- ✓ surface pressure
- ✓ force to start

LIV SYSTEMS heavy duty Fixed castor + injection-moulded polyurethane tread Ø200 x W50mm for 500kg Prod ID: 42633

ID 42633: Castor overall height 240 mm | 4 mounting holes with distance 105x80 mm | Wheel with roller bearing and injection-moulded polyurethane tread with hardness 92 ° Shore A | Power ride, wide chemical resistance, small surface pressure, low force to

Product information

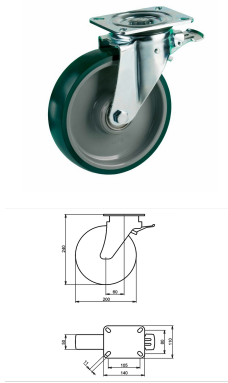
- Article code 2-081-40V
- SKU 42633
- EAN 3838461426339

Specifications

The result of our quality is maximum performance!

[Close](#)

[Close](#)



Product description

heavy duty Swivel castor with brake with an overall height of 240 mm

Wheel diameter x width: 200 x 50 mm

Top plate with 4 mounting holes of 11 mm, mounting hole distance 105x80 mm and top plate outer dimensions: 140x110 mm

Wheel with ball bearing and injection-moulded polyurethane tread with hardness 92 ° Shore A on polyamide

the double brake system, brakes the turning of the wheel and the swivel rotation.

Approved and tested load capacity

Dynamic 500 kg

Static 620 kg

Temperature range:

Continious operation: -25 | +55°C

Short (10 min) exposure: -30 | +55°C

Advantages of this Power ride Swivel castor with brake:

- ✓ chemical resistance
- ✓ surface pressure
- ✓ force to start

LIV SYSTEMS heavy duty Swivel castor with brake + injection-moulded polyurethane tread Ø200 x W50mm for 500kg Prod ID: 42605

ID 42605: Castor overall height 240 mm | 4 mounting holes with distance 105x80 mm | Wheel with ball bearing and injection-moulded polyurethane tread with hardness 92 ° Shore A | The double brake system, brakes the turning of the wheel and the swivel rota

Product information

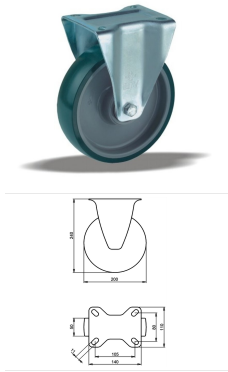
- Article code 2-083-40K
- SKU 42605
- EAN 3838461426056

Specifications

The result of our quality is maximum performance!

[Close](#)

[Close](#)



Product description

heavy duty Fixed castor with an overall height of 240 mm

Wheel diameter x width: 200 x 50 mm

Top plate with 4 mounting holes of 11 mm, mounting hole distance 105x80 mm and top plate outer dimensions: 140x110 mm

Wheel with ball bearing and injection-moulded polyurethane tread with hardness 92 ° Shore A on polyamide.

Approved and tested load capacity

Dynamic 500 kg

Static 620 kg

Temperature range:

Continuous operation: -25 | +55°C

Short (10 min) exposure: -30 | +55°C

Advantages of this Power ride Fixed castor:

- ✓ chemical resistance
- ✓ surface pressure
- ✓ force to start

LIV SYSTEMS heavy duty Fixed castor + injection-moulded polyurethane tread Ø200 x W50mm for 500kg Prod ID: 42625

ID 42625: Castor overall height 240 mm | 4 mounting holes with distance 105x80 mm | Wheel with ball bearing and injection-moulded polyurethane tread with hardness 92 ° Shore A | Power ride, wide chemical resistance, small surface pressure, low force to s

Product information

- Article code 2-081-40K
- SKU 42625
- EAN 3838461426254

Specifications

The result of our quality is maximum performance!

[Close](#)

[Close](#)



Product description

heavy duty Wheel with plain bearing and solid polyamide wheel with hardness 70 ± 5 Shore D

Wheel diameter x width: 200 x 44 mm

Axle hole: 20 mm

Hub length: 59 mm

Approved and tested load capacity

Dynamic 500 kg

Static 620 kg

Temperature range:

Continuous operation: -25 | $+80^{\circ}\text{C}$

Short (10 min) exposure: -30 | $+110^{\circ}\text{C}$

Advantages of this High load easy start wheel:

- ✓ wearout
- ✓ effort to keep rolling
- ✓ to turn

LIV SYSTEMS heavy duty wheel + solid polyamide wheel $\text{Ø}200$ x W44mm for 500kg Prod ID: 23707

ID 23707: heavy duty Wheel with plain bearing and solid polyamide wheel with hardness 70 ± 5 Shore D | Axle hole: 20 mm | Hub length: 59 mm | High load easy start, low wearout, little effort to keep rolling, easy to turn

Product information

- Article code 2-733
- SKU 23707
- EAN 3838461237072



Product description

heavy duty Wheel with plain bearing and solid polyamide wheel with hardness 70 ± 5 Shore D

Wheel diameter x width: 200 x 44 mm

Axle hole: 25 mm

Hub length: 59 mm

Approved and tested load capacity

Dynamic 500 kg

Static 620 kg

Temperature range:

Continuous operation: -25 | $+80^{\circ}\text{C}$

Short (10 min) exposure: -30 | $+110^{\circ}\text{C}$

Advantages of this High load easy start wheel:

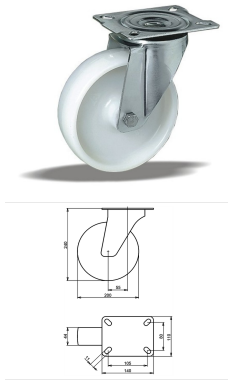
- ✓ wearout
- ✓ effort to keep rolling
- ✓ to turn

LIV SYSTEMS heavy duty wheel + solid polyamide wheel $\text{\O}200$ x W44mm for 500kg Prod ID: 23706

ID 23706: heavy duty Wheel with plain bearing and solid polyamide wheel with hardness 70 ± 5 Shore D | Axle hole: 25 mm | Hub length: 59 mm | High load easy start, low wearout, little effort to keep rolling, easy to turn

Product information

- Article code 2-734
- SKU 23706
- EAN 3838461237065



Product description

heavy duty Swivel castor with an overall height of 240 mm

Wheel diameter x width: 200 x 44 mm

Top plate with 4 mounting holes of 11 mm, mounting hole distance 105x80 mm and top plate outer dimensions: 140x110 mm

Wheel with plain bearing and solid polyamide wheel with hardness 70±5 Shore D.

Approved and tested load capacity

Dynamic 500 kg

Static 620 kg

Temperature range:

Continuous operation: -25 | +80°C

Short (10 min) exposure: -30 | +110°C

Advantages of this High load easy start Swivel castor:

- ✓ wearout
- ✓ effort to keep rolling
- ✓ to turn

LIV SYSTEMS heavy duty Swivel castor + solid polyamide wheel Ø200 x W44mm for 500kg Prod ID: 56582

ID 56582: Castor overall height 240 mm | 4 mounting holes with distance 105x80 mm | Wheel with plain bearing and solid polyamide wheel with hardness 70±5 Shore D |

High load easy start, low wearout, little effort to keep rolling, easy to turn

Product information

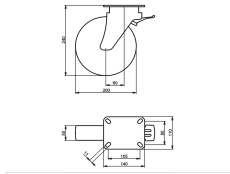
- Article code 2-743 ISO
- SKU 56582
- EAN 3838461565823

Specifications

The result of our quality is maximum performance!

[Close](#)

[Close](#)



Product description

heavy duty Swivel castor with brake with an overall height of 240 mm

Wheel diameter x width: 200 x 50 mm

Top plate with 4 mounting holes of 11 mm, mounting hole distance 105x80 mm and top plate outer dimensions: 140x110 mm

Wheel with plain bearing and solid polyamide wheel with hardness 70±5 Shore D

the double brake system, brakes the turning of the wheel and the swivel rotation.

Approved and tested load capacity

Dynamic 500 kg

Static 620 kg

Temperature range:

Continuous operation: -25 | +80°C

Short (10 min) exposure: -30 | +110°C

Advantages of this High load easy start Swivel castor with brake:

- ✓ wearout
- ✓ effort to keep rolling
- ✓ to turn

LIV SYSTEMS heavy duty Swivel castor with brake + solid polyamide wheel Ø200 x W50mm for 500kg Prod ID: 42573

ID 42573: Castor overall height 240 mm | 4 mounting holes with distance 105x80 mm | Wheel with plain bearing and solid polyamide wheel with hardness 70±5 Shore D | The double brake system, brakes the turning of the wheel and the swivel rotation. | High l

Product information

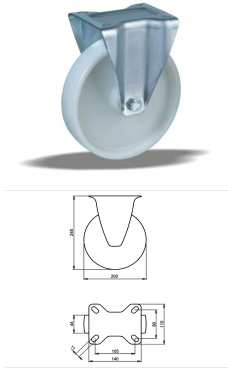
- Article code 2-063-40D
- SKU 42573
- EAN 3838461425738

Specifications

The result of our quality is maximum performance!

[Close](#)

[Close](#)



Product description

heavy duty Fixed castor with an overall height of 240 mm

Wheel diameter x width: 200 x 44 mm

Top plate with 4 mounting holes of 11 mm, mounting hole distance 105x80 mm and top plate outer dimensions: 140x110 mm

Wheel with plain bearing and solid polyamide wheel with hardness 70±5 Shore D.

Approved and tested load capacity

Dynamic 500 kg

Static 620 kg

Temperature range:

Continuous operation: -25 | +80°C

Short (10 min) exposure: -30 | +110°C

Advantages of this High load easy start Fixed castor:

- ✓ wearout
- ✓ effort to keep rolling
- ✓ to turn

LIV SYSTEMS heavy duty Fixed castor + solid polyamide wheel Ø200 x W44mm for 500kg Prod ID: 56585

ID 56585: Castor overall height 240 mm | 4 mounting holes with distance 105x80 mm | Wheel with plain bearing and solid polyamide wheel with hardness 70±5 Shore D |

High load easy start, low wearout, little effort to keep rolling, easy to turn

Product information

- Article code 2-737 ISO
- SKU 56585
- EAN 3838461565854

Specifications

The result of our quality is maximum performance!

[Close](#)

[Close](#)



Product description

heavy duty Wheel with plain bearing and solid polyamide wheel with hardness 70 ± 5 Shore D

Wheel diameter x width: 200 x 44 mm

Axle hole: 20 mm

Hub length: 59 mm

Approved and tested load capacity

Dynamic 500 kg

Static 620 kg

Temperature range:

Continuous operation: -25 | $+80^{\circ}\text{C}$

Short (10 min) exposure: -30 | $+110^{\circ}\text{C}$

Advantages of this High load easy start wheel:

- ✓ wearout
- ✓ effort to keep rolling
- ✓ to turn

LIV SYSTEMS heavy duty wheel + solid polyamide wheel $\text{Ø}200$ x W44mm for 500kg Prod ID: 91085

ID 91085: heavy duty Wheel with plain bearing and solid polyamide wheel with hardness 70 ± 5 Shore D | Axle hole: 20 mm | Hub length: 59 mm | High load easy start, low wearout, little effort to keep rolling, easy to turn

Product information

- Article code 2-733
- SKU 91085
- EAN 3838461910852



Product description

heavy duty Wheel with plain bearing and solid polyamide wheel with hardness 70 ± 5 Shore D

Wheel diameter x width: 200 x 44 mm

Axle hole: 25 mm

Hub length: 59 mm

Approved and tested load capacity

Dynamic 500 kg

Static 620 kg

Temperature range:

Continuous operation: -25 | $+80^{\circ}\text{C}$

Short (10 min) exposure: -30 | $+110^{\circ}\text{C}$

Advantages of this High load easy start wheel:

- ✓ wearout
- ✓ effort to keep rolling
- ✓ to turn

LIV SYSTEMS heavy duty wheel + solid polyamide wheel $\text{Ø}200$ x W44mm for 500kg Prod ID: 24622

ID 24622: heavy duty Wheel with plain bearing and solid polyamide wheel with hardness 70 ± 5 Shore D | Axle hole: 25 mm | Hub length: 59 mm | High load easy start, low wearout, little effort to keep rolling, easy to turn

Product information

- Article code 2-734
- SKU 24622
- EAN 3838461246227



Product description

heavy duty Swivel castor with an overall height of 240 mm

Wheel diameter x width: 200 x 44 mm

Top plate with 4 mounting holes of 11 mm, mounting hole distance 105x80 mm and top plate outer dimensions: 140x110 mm

Wheel with plain bearing and solid polyamide wheel with hardness 70±5 Shore D.

Approved and tested load capacity

Dynamic 500 kg

Static 620 kg

Temperature range:

Continuous operation: -25 | +80°C

Short (10 min) exposure: -30 | +110°C

Advantages of this High load easy start Swivel castor:

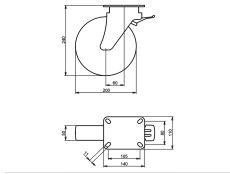
- ✓ wearout
- ✓ effort to keep rolling
- ✓ to turn

LIV SYSTEMS heavy duty Swivel castor + solid polyamide wheel Ø200 x W44mm for 500kg Prod ID: 31803

ID 31803: Castor overall height 240 mm | 4 mounting holes with distance 105x80 mm | Wheel with plain bearing and solid polyamide wheel with hardness 70±5 Shore D | High load easy start, low wearout, little effort to keep rolling, easy to turn

Product information

- Article code 2-743 ISO
- SKU 31803
- EAN 3838461318030



Product description

heavy duty Swivel castor with brake with an overall height of 240 mm

Wheel diameter x width: 200 x 50 mm

Top plate with 4 mounting holes of 11 mm, mounting hole distance 105x80 mm and top plate outer dimensions: 140x110 mm

Wheel with plain bearing and solid polyamide wheel with hardness 70±5 Shore D

the double brake system, brakes the turning of the wheel and the swivel rotation.

Approved and tested load capacity

Dynamic 500 kg

Static 620 kg

Temperature range:

Continuous operation: -25 | +80°C

Short (10 min) exposure: -30 | +110°C

Advantages of this High load easy start Swivel castor with brake:

- ✓ wearout
- ✓ effort to keep rolling
- ✓ to turn

LIV SYSTEMS heavy duty Swivel castor with brake + solid polyamide wheel Ø200 x W50mm for 500kg Prod ID: 42575

ID 42575: Castor overall height 240 mm | 4 mounting holes with distance 105x80 mm | Wheel with plain bearing and solid polyamide wheel with hardness 70±5 Shore D | The double brake system, brakes the turning of the wheel and the swivel rotation. | High l

Product information

- Article code 2-063-40D
- SKU 42575
- EAN 3838461425752

Specifications

The result of our quality is maximum performance!

[Close](#)

[Close](#)



Product description

heavy duty Fixed castor with an overall height of 240 mm

Wheel diameter x width: 200 x 44 mm

Top plate with 4 mounting holes of 11 mm, mounting hole distance 105x80 mm and top plate outer dimensions: 140x110 mm

Wheel with plain bearing and solid polyamide wheel with hardness 70±5 Shore D.

Approved and tested load capacity

Dynamic 500 kg

Static 620 kg

Temperature range:

Continuous operation: -25 | +80°C

Short (10 min) exposure: -30 | +110°C

Advantages of this High load easy start Fixed castor:

- ✓ wearout
- ✓ effort to keep rolling
- ✓ to turn

LIV SYSTEMS heavy duty Fixed castor + solid polyamide wheel Ø200 x W44mm for 500kg Prod ID: 22831

ID 22831: Castor overall height 240 mm | 4 mounting holes with distance 105x80 mm | Wheel with plain bearing and solid polyamide wheel with hardness 70±5 Shore D | High load easy start, low wearout, little effort to keep rolling, easy to turn

Product information

- Article code 2-737 ISO
- SKU 22831
- EAN 3838461228315



Product description

heavy duty Wheel with ball bearing and solid polyamide wheel with hardness 70 ± 5 Shore D

Wheel diameter x width: 200 x 50 mm

Axle hole: 20 mm

Hub length: 60 mm

Approved and tested load capacity

Dynamic 500 kg

Static 620 kg

Temperature range:

Continuous operation: -25 | $+80^{\circ}\text{C}$

Short (10 min) exposure: -30 | $+110^{\circ}\text{C}$

Advantages of this High load easy start wheel:

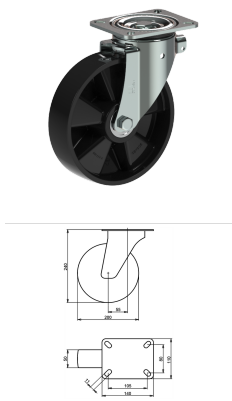
- ✓ wearout
- ✓ effort to keep rolling
- ✓ to turn

LIV SYSTEMS heavy duty wheel + solid polyamide wheel $\text{\O}200$ x W50mm for 500kg Prod ID: 35605

ID 35605: heavy duty Wheel with ball bearing and solid polyamide wheel with hardness 70 ± 5 Shore D | Axle hole: 20 mm | Hub length: 60 mm | High load easy start, low wearout, little effort to keep rolling, easy to turn

Product information

- Article code 2-277 ISO
- SKU 35605
- EAN 3838461356056



Product description

heavy duty Swivel castor with an overall height of 240 mm

Wheel diameter x width: 200 x 50 mm

Top plate with 4 mounting holes of 11 mm, mounting hole distance 105x80 mm and top plate outer dimensions: 140x110 mm

Wheel with ball bearing and solid polyamide wheel with hardness 70±5 Shore D.

Approved and tested load capacity

Dynamic 500 kg

Static 620 kg

Temperature range:

Continuous operation: -25 | +80°C

Short (10 min) exposure: -30 | +110°C

Advantages of this High load easy start Swivel castor:

- ✓ wearout
- ✓ effort to keep rolling
- ✓ to turn

LIV SYSTEMS heavy duty Swivel castor + solid polyamide wheel Ø200 x W50mm for 500kg Prod ID: 56583

ID 56583: Castor overall height 240 mm | 4 mounting holes with distance 105x80 mm | Wheel with ball bearing and solid polyamide wheel with hardness 70±5 Shore D | High load easy start, low wearout, little effort to keep rolling, easy to turn

Product information

- Article code 2-276 ISO
- SKU 56583
- EAN 3838461565830

Алматы (7273)495-231
Ангарск (3955)60-70-56
Архангельск (8182)63-90-72
Астрахань (8512)99-46-04
Барнаул (3852)73-04-60
Белгород (4722)40-23-64
Благовещенск (4162)22-76-07
Брянск (4832)59-03-52
Владивосток (423)249-28-31
Владикавказ (8672)28-90-48
Владимир (4922)49-43-18
Волгоград (844)278-03-48
Вологда (8172)26-41-59
Воронеж (473)204-51-73
Екатеринбург (343)384-55-89

Иваново (4932)77-34-06
Ижевск (3412)26-03-58
Иркутск (395)279-98-46
Казань (843)206-01-48
Калининград (4012)72-03-81
Калуга (4842)92-23-67
Кемерово (3842)65-04-62
Киров (8332)68-02-04
Коломна (4966)23-41-49
Кострома (4942)77-07-48
Краснодар (861)203-40-90
Красноярск (391)204-63-61
Курск (4712)77-13-04
Курган (3522)50-90-47
Липецк (4742)52-20-81

Магнитогорск (3519)55-03-13
Москва (495)268-04-70
Мурманск (8152)59-64-93
Набережные Челны (8552)20-53-41
Нижний Новгород (831)429-08-12
Новокузнецк (3843)20-46-81
Ноябрьск (3496)41-32-12
Киров (8332)68-02-04
Новосибирск (383)227-86-73
Омск (3812)21-46-40
Орел (4862)44-53-42
Оренбург (3532)37-68-04
Пенза (8412)22-31-16
Петрозаводск (8142)55-98-37
Псков (8112)59-10-37
Пермь (342)205-81-47

Ростов-на-Дону (863)308-18-15
Рязань (4912)46-61-64
Самара (846)206-03-16
Санкт-Петербург (812)309-46-40
Саратов (845)249-38-78
Севастополь (8692)22-31-93
Саранск (8342)22-96-24
Симферополь (3652)67-13-56
Смоленск (4812)29-41-54
Сочи (862)225-72-31
Ставрополь (8652)20-65-13
Сургут (3462)77-98-35
Сыктывкар (8212)25-95-17
Тамбов (4752)50-40-97
Тверь (4822)63-31-35

Тольятти (8482)63-91-07
Томск (3822)98-41-53
Тула (4872)33-79-87
Тюмень (3452)66-21-18
Ульяновск (8422)24-23-59
Улан-Удэ (3012)59-97-51
Уфа (347)229-48-12
Хабаровск (4212)92-98-04
Чебоксары (8352)28-53-07
Челябинск (351)202-03-61
Череповец (8202)49-02-64
Чита (3022)38-34-83
Якутск (4112)23-90-97
Ярославль (4852)69-52-93

Россия +7(495)268-04-70

Казахстан +7(7172)727-132

Киргизия +996(312)96-26-47

<https://liv.nt-rt.ru/> || vis@nt-rt.ru