

Алматы (7273)495-231
Ангарск (3956)60-70-56
Архангельск (8182)63-90-72
Астрахань (8512)99-46-04
Барнаул (3852)73-04-60
Белгород (4722)40-23-64
Благовещенск (4162)22-76-07
Брянск (4832)59-03-52
Владивосток (423)249-28-31
Владикавказ (8672)28-90-48
Владимир (4922)49-43-18
Волгоград (844)278-03-48
Вологда (8172)26-41-59
Воронеж (473)204-51-73
Екатеринбург (343)384-55-89

Иваново (4932)77-34-06
Ижевск (3412)26-03-58
Иркутск (395)279-98-46
Казань (843)206-01-48
Калининград (4012)72-03-81
Калуга (4842)92-23-67
Кемерово (3842)65-04-62
Киров (8332)68-02-04
Коломна (4966)23-41-49
Кострома (4942)77-07-48
Краснодар (861)203-40-90
Красноярск (391)204-63-61
Курск (4712)77-13-04
Курган (3522)50-90-47
Липецк (4742)52-20-81

Россия +7(495)268-04-70

Магнитогорск (3519)55-03-13
Москва (495)268-04-70
Мурманск (8152)59-64-93
Набережные Челны (8552)20-53-41
Нижегород (831)429-08-12
Новокузнецк (3843)20-46-81
Новосибирск (383)227-86-73
Омск (3812)21-46-40
Орел (4862)44-53-42
Оренбург (3532)37-68-04
Пенза (8412)22-31-16
Петрозаводск (8142)55-98-37
Пермь (342)205-81-47

Казахстан +7(7172)727-132

Ростов-на-Дону (863)308-18-15
Рязань (4912)46-61-64
Самара (846)206-03-16
Санкт-Петербург (812)309-46-40
Саратов (845)249-38-78
Севастополь (8692)22-31-93
Саранск (8342)22-96-24
Симферополь (3652)67-13-56
Смоленск (4812)29-41-54
Сочи (862)225-72-31
Ставрополь (8652)20-65-13
Сургут (3462)77-98-35
Сыктывкар (8212)25-95-17
Тамбов (4752)50-40-97
Тверь (4822)63-31-35

Киргизия +996(312)96-26-47

Тольятти (8482)63-91-07
Томск (3822)98-41-53
Тула (4872)33-79-87
Тюмень (3452)66-21-18
Ульяновск (8422)24-23-59
Улан-Удэ (3012)59-97-51
Уфа (347)229-48-12
Хабаровск (4212)92-98-04
Чебоксары (8352)28-53-07
Челябинск (351)202-03-61
Череповец (8202)49-02-64
Чита (3022)38-34-83
Якутск (4112)23-90-97
Ярославль (4852)69-52-93

<https://liv.nt-rt.ru/> || vis@nt-rt.ru



Product description

standard Wheel with plain bearing and elastic rubber tyre with hardness 70 ° shore A on polyamide

Wheel diameter x width: 100 x 35 mm

Axle hole: 15 mm

Hub length: 44 mm

Approved and tested load capacity

Dynamic 150 kg

Static 180 kg

Temperature range:

Continous operation: -25 | +80°C

Short (10 min) exposure: -30 | +110°C

Advantages of this Soft floor wheel wheel:

- ✓ force to start
- ✓ ride
- ✓ to surface when stationed

LIV SYSTEMS standard wheel + elastic rubber tyre Ø100 x W35mm for 150kg

Prod ID: 39834

ID 39834:standard Wheel with plain bearing and elastic rubber tyre with hardness 70 ° shore A on polyamide | Axle hole: 15 mm | Hub length: 44 mm | Soft floor wheel, low force to start, smooth ride, gentle to surface when stationed

Product information

- Article code 2-040-20D
- SKU 39834
- EAN 3838461398346



Product description

standard Wheel with roller bearing and elastic rubber tyre with hardness 70 ° shore A on polyamide

Wheel diameter x width: 100 x 35 mm

Axle hole: 12 mm

Hub length: 44 mm

Approved and tested load capacity

Dynamic 150 kg

Static 180 kg

Temperature range:

Continuous operation: -25 | +80°C

Short (10 min) exposure: -30 | +110°C

Advantages of this Soft floor wheel wheel:

- ✓ force to start
- ✓ ride
- ✓ to surface when stationed

LIV SYSTEMS standard wheel + elastic rubber tyre Ø100 x W35mm for 150kg

Prod ID: 39843

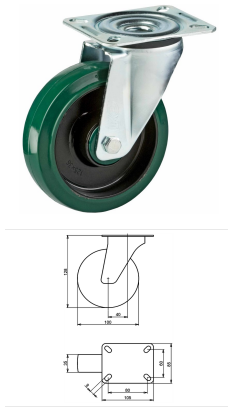
ID 39843: standard Wheel with roller bearing and elastic rubber tyre with hardness 70 ° shore A on polyamide | Axle hole: 12 mm | Hub length: 44 mm | Soft floor wheel, low force to start, smooth ride, gentle to surface when stationed

Product information

- Article code 2-040-20V
- SKU 39843
- EAN 3838461398438

Specifications

The result of our quality is maximum performance!



Product description

standard Swivel castor with an overall height of 128 mm

Wheel diameter x width: 100 x 35 mm

Top plate with 4 mounting holes of 9 mm, mounting hole distance 80x60 mm and top plate outer dimensions: 105x85 mm

Wheel with roller bearing and elastic rubber tyre with hardness 70 ° shore A on polyamide.

Approved and tested load capacity

Dynamic 150 kg

Static 180 kg

Temperature range:

Continuous operation: -25 | +80°C

Short (10 min) exposure: -30 | +110°C

Advantages of this Soft floor wheel Swivel castor:

- ✓ force to start
- ✓ ride
- ✓ to surface when stationed

LIV SYSTEMS standard Swivel castor + elastic rubber tyre Ø100 x W35mm for 150kg Prod ID: 39915

ID 39915: Castor overall height 128 mm | 4 mounting holes with distance 80x60 mm | Wheel with roller bearing and elastic rubber tyre with hardness 70 ° shore A | Soft floor wheel, low force to start, smooth ride, gentle to surface when stationed

Product information

- Article code 2-042-20V
- SKU 39915
- EAN 3838461399152

Specifications

The result of our quality is maximum performance!

[Close](#)

[Close](#)



Product description

standard Wheel with ball bearing and elastic rubber tyre with hardness 70 ° shore A on polyamide

Wheel diameter x width: 100 x 35 mm

Axle hole: 12 mm

Hub length: 44 mm

Approved and tested load capacity

Dynamic 150 kg

Static 180 kg

Temperature range:

Continous operation: -25 | +80°C

Short (10 min) exposure: -30 | +110°C

Advantages of this Soft floor wheel wheel:

✓ force to start

✓ ride

✓ to surface when stationed

LIV SYSTEMS standard wheel + elastic rubber tyre Ø100 x W35mm for 150kg

Prod ID: 39845

ID 39845: standard Wheel with ball bearing and elastic rubber tyre with hardness 70 ° shore A on polyamide | Axle hole: 12 mm | Hub length: 44 mm | Soft floor wheel, low force to start, smooth ride, gentle to surface when stationed

Product information

- Article code 2-040-20K
- SKU 39845
- EAN 3838461398452

Specifications

The result of our quality is maximum performance!



Product description

standard Swivel castor with brake with an overall height of 128 mm
 Wheel diameter x width: 100 x 35 mm
 Top plate with 4 mounting holes of 9 mm, mounting hole distance 80x60 mm and top plate outer dimensions: 105x85 mm
 Wheel with roller bearing and elastic rubber tyre with hardness 70 ° shore A on polyamide
 the double brake system, brakes the turning of the wheel and the swivel rotation.

Approved and tested load capacity

Dynamic 150 kg
 Static 180 kg

Temperature range:

Continious operation: -25 | +80°C
 Short (10 min) exposure: -30 | +110°C

Advantages of this Soft floor wheel Swivel castor with brake:

- ✓ force to start
- ✓ ride
- ✓ to surface when stationed

LIV SYSTEMS standard Swivel castor with brake + elastic rubber tyre Ø100 x W35mm for 150kg Prod ID: 39955

ID 39955: Castor overall height 128 mm | 4 mounting holes with distance 80x60 mm | Wheel with roller bearing and elastic rubber tyre with hardness 70 ° shore A | The double brake system, brakes the turning of the wheel and the swivel rotation. | Soft flo

Product information

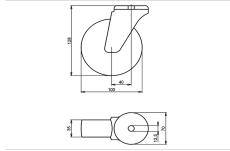
- Article code 2-043-20V
- SKU 39955
- EAN 3838461399558

Specifications

The result of our quality is maximum performance!

[Close](#)

[Close](#)



Product description

standard Swivel castor with an overall height of 128 mm

Wheel diameter x width: 100 x 35 mm

Top plate with 4 mounting holes of 12,5 mm, mounting hole distance #\$\$ mm and top plate outer dimensions: 70 mm

Wheel with roller bearing and elastic rubber tyre with hardness 70 ° shore A on polyamide.

Approved and tested load capacity

Dynamic 150 kg

Static 180 kg

Temperature range:

Continuous operation: -25 | +80°C

Short (10 min) exposure: -30 | +110°C

Advantages of this Soft floor wheel Swivel castor:

- ✓ force to start
- ✓ ride
- ✓ to surface when stationed

LIV SYSTEMS standard Swivel castor + elastic rubber tyre Ø100 x W35mm for 150kg Prod ID: 40205

ID 40205: Castor overall height 128 mm | 4 mounting holes with distance #\$\$ mm | Wheel with roller bearing and elastic rubber tyre with hardness 70 ° shore A | Soft floor wheel, low force to start, smooth ride, gentle to surface when stationed

Product information

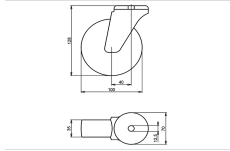
- Article code 2-044-20V
- SKU 40205
- EAN 3838461402050

Specifications

The result of our quality is maximum performance!

[Close](#)

[Close](#)



Product description

standard Swivel castor with an overall height of 128 mm

Wheel diameter x width: 100 x 35 mm

Top plate with 4 mounting holes of 12,5 mm, mounting hole distance #\$\$ mm and top plate outer dimensions: 70 mm

Wheel with ball bearing and elastic rubber tyre with hardness 70 ° shore A on polyamide.

Approved and tested load capacity

Dynamic 150 kg

Static 180 kg

Temperature range:

Continous operation: -25 | +80°C

Short (10 min) exposure: -30 | +110°C

Advantages of this Soft floor wheel Swivel castor:

- ✓ force to start
- ✓ ride
- ✓ to surface when stationed

LIV SYSTEMS standard Swivel castor + elastic rubber tyre Ø100 x W35mm for 150kg Prod ID: 40213

ID 40213: Castor overall height 128 mm | 4 mounting holes with distance #\$\$ mm | Wheel with ball bearing and elastic rubber tyre with hardness 70 ° shore A | Soft floor wheel, low force to start, smooth ride, gentle to surface when stationed

Product information

- Article code 2-044-20K
- SKU 40213
- EAN 3838461402135

Specifications

The result of our quality is maximum performance!

[Close](#)

[Close](#)



Product description

standard Swivel castor with brake with an overall height of 128 mm
 Wheel diameter x width: 100 x 35 mm
 Top plate with 4 mounting holes of 12,5 mm, mounting hole distance #\$\$ mm and top plate outer dimensions: 93 mm
 Wheel with ball bearing and elastic rubber tyre with hardness 70 ° shore A on polyamide
 the double brake system, brakes the turning of the wheel and the swivel rotation.

Approved and tested load capacity

Dynamic 150 kg
 Static 180 kg

Temperature range:

Continious operation: -25 | +80°C
 Short (10 min) exposure: -30 | +110°C

Advantages of this Soft floor wheel Swivel castor with brake:

- ✓ force to start
- ✓ ride
- ✓ to surface when stationed

LIV SYSTEMS standard Swivel castor with brake + elastic rubber tyre Ø100 x W35mm for 150kg Prod ID: 40253

ID 40253: Castor overall height 128 mm | 4 mounting holes with distance #\$\$ mm | Wheel with ball bearing and elastic rubber tyre with hardness 70 ° shore A | The double brake system, brakes the turning of the wheel and the swivel rotation. | Soft floor w

Product information

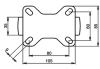
- Article code 2-045-20K
- SKU 40253
- EAN 3838461402531

Specifications

The result of our quality is maximum performance!

[Close](#)

[Close](#)



Product description

standard Fixed castor with an overall height of 128 mm

Wheel diameter x width: 100 x 35 mm

Top plate with 4 mounting holes of 9 mm, mounting hole distance 80x60 mm and top plate outer dimensions: 105x85 mm

Wheel with roller bearing and elastic rubber tyre with hardness 70 ° shore A on polyamide.

Approved and tested load capacity

Dynamic 150 kg

Static 180 kg

Temperature range:

Continuous operation: -25 | +80°C

Short (10 min) exposure: -30 | +110°C

Advantages of this Soft floor wheel Fixed castor:

- ✓ force to start
- ✓ ride
- ✓ to surface when stationed

LIV SYSTEMS standard Fixed castor + elastic rubber tyre Ø100 x W35mm for 150kg Prod ID: 39875

ID 39875: Castor overall height 128 mm | 4 mounting holes with distance 80x60 mm | Wheel with roller bearing and elastic rubber tyre with hardness 70 ° shore A | Soft floor wheel, low force to start, smooth ride, gentle to surface when stationed

Product information

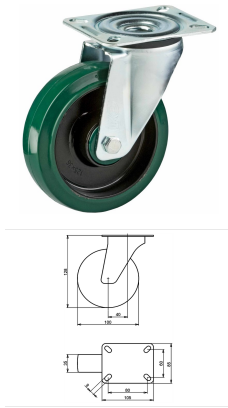
- Article code 2-041-20V
- SKU 39875
- EAN 3838461398759

Specifications

The result of our quality is maximum performance!

[Close](#)

[Close](#)



Product description

standard Swivel castor with an overall height of 128 mm

Wheel diameter x width: 100 x 35 mm

Top plate with 4 mounting holes of 9 mm, mounting hole distance 80x60 mm and top plate outer dimensions: 105x85 mm

Wheel with plain bearing and elastic rubber tyre with hardness 70 ° shore A on polyamide.

Approved and tested load capacity

Dynamic 150 kg

Static 180 kg

Temperature range:

Continuous operation: -25 | +80°C

Short (10 min) exposure: -30 | +110°C

Advantages of this Soft floor wheel Swivel castor:

- ✓ force to start
- ✓ ride
- ✓ to surface when stationed

LIV SYSTEMS standard Swivel castor + elastic rubber tyre Ø100 x W35mm for 150kg Prod ID: 39914

ID 39914: Castor overall height 128 mm | 4 mounting holes with distance 80x60 mm | Wheel with plain bearing and elastic rubber tyre with hardness 70 ° shore A | Soft floor wheel, low force to start, smooth ride, gentle to surface when stationed

Product information

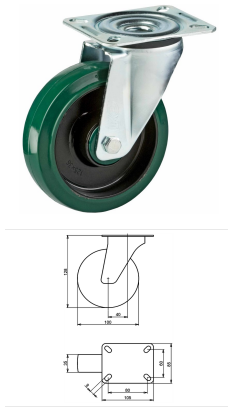
- Article code 2-042-20D
- SKU 39914
- EAN 3838461399145

Specifications

The result of our quality is maximum performance!

[Close](#)

[Close](#)



Product description

standard Swivel castor with an overall height of 128 mm

Wheel diameter x width: 100 x 35 mm

Top plate with 4 mounting holes of 9 mm, mounting hole distance 80x60 mm and top plate outer dimensions: 105x85 mm

Wheel with ball bearing and elastic rubber tyre with hardness 70 ° shore A on polyamide.

Approved and tested load capacity

Dynamic 150 kg

Static 180 kg

Temperature range:

Continuous operation: -25 | +80°C

Short (10 min) exposure: -30 | +110°C

Advantages of this Soft floor wheel Swivel castor:

- ✓ force to start
- ✓ ride
- ✓ to surface when stationed

LIV SYSTEMS standard Swivel castor + elastic rubber tyre Ø100 x W35mm for 150kg Prod ID: 39923

ID 39923: Castor overall height 128 mm | 4 mounting holes with distance 80x60 mm | Wheel with ball bearing and elastic rubber tyre with hardness 70 ° shore A | Soft floor wheel, low force to start, smooth ride, gentle to surface when stationed

Product information

- Article code 2-042-20K
- SKU 39923
- EAN 3838461399237

Specifications

The result of our quality is maximum performance!

[Close](#)

[Close](#)



Product description

standard Swivel castor with brake with an overall height of 128 mm
 Wheel diameter x width: 100 x 35 mm
 Top plate with 4 mounting holes of 9 mm, mounting hole distance 80x60 mm and top plate outer dimensions: 105x85 mm
 Wheel with plain bearing and elastic rubber tyre with hardness 70 ° shore A on polyamide
 the double brake system, brakes the turning of the wheel and the swivel rotation.

Approved and tested load capacity

Dynamic 150 kg
 Static 180 kg

Temperature range:

Continious operation: -25 | +80°C
 Short (10 min) exposure: -30 | +110°C

Advantages of this Soft floor wheel Swivel castor with brake:

- ✓ force to start
- ✓ ride
- ✓ to surface when stationed

LIV SYSTEMS standard Swivel castor with brake + elastic rubber tyre Ø100 x W35mm for 150kg Prod ID: 39954

ID 39954: Castor overall height 128 mm | 4 mounting holes with distance 80x60 mm | Wheel with plain bearing and elastic rubber tyre with hardness 70 ° shore A | The double brake system, brakes the turning of the wheel and the swivel rotation. | Soft floor

Product information

- Article code 2-043-20D
- SKU 39954
- EAN 3838461399541

Specifications

The result of our quality is maximum performance!

[Close](#)

[Close](#)



Product description

standard Swivel castor with brake with an overall height of 128 mm
 Wheel diameter x width: 100 x 35 mm
 Top plate with 4 mounting holes of 9 mm, mounting hole distance 80x60 mm and top plate outer dimensions: 105x85 mm
 Wheel with ball bearing and elastic rubber tyre with hardness 70 ° shore A on polyamide
 the double brake system, brakes the turning of the wheel and the swivel rotation.

Approved and tested load capacity

Dynamic 150 kg
 Static 180 kg

Temperature range:

Continious operation: -25 | +80°C
 Short (10 min) exposure: -30 | +110°C

Advantages of this Soft floor wheel Swivel castor with brake:

- ✓ force to start
- ✓ ride
- ✓ to surface when stationed

LIV SYSTEMS standard Swivel castor with brake + elastic rubber tyre Ø100 x W35mm for 150kg Prod ID: 39963

ID 39963: Castor overall height 128 mm | 4 mounting holes with distance 80x60 mm | Wheel with ball bearing and elastic rubber tyre with hardness 70 ° shore A | The double brake system, brakes the turning of the wheel and the swivel rotation. | Soft floor

Product information

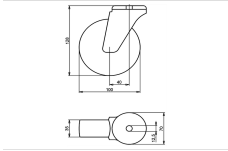
- Article code 2-043-20K
- SKU 39963
- EAN 3838461399633

Specifications

The result of our quality is maximum performance!

[Close](#)

[Close](#)



Product description

standard Swivel castor with an overall height of 128 mm

Wheel diameter x width: 100 x 35 mm

Top plate with 4 mounting holes of 12,5 mm, mounting hole distance #\$\$ mm and top plate outer dimensions: 70 mm

Wheel with plain bearing and elastic rubber tyre with hardness 70 ° shore A on polyamide.

Approved and tested load capacity

Dynamic 150 kg

Static 180 kg

Temperature range:

Continuous operation: -25 | +80°C

Short (10 min) exposure: -30 | +110°C

Advantages of this Soft floor wheel Swivel castor:

- ✓ force to start
- ✓ ride
- ✓ to surface when stationed

LIV SYSTEMS standard Swivel castor + elastic rubber tyre Ø100 x W35mm for 150kg Prod ID: 40204

ID 40204: Castor overall height 128 mm | 4 mounting holes with distance #\$\$ mm | Wheel with plain bearing and elastic rubber tyre with hardness 70 ° shore A | Soft floor wheel, low force to start, smooth ride, gentle to surface when stationed

Product information

- Article code 2-044-20D
- SKU 40204
- EAN 3838461402043

Specifications

The result of our quality is maximum performance!

[Close](#)

[Close](#)



Product description

standard Swivel castor with brake with an overall height of 128 mm

Wheel diameter x width: 100 x 35 mm

Top plate with 4 mounting holes of 12,5 mm, mounting hole distance #\$\$ mm and top plate outer dimensions: 70 mm

Wheel with plain bearing and elastic rubber tyre with hardness 70 ° shore A on polyamide

the double brake system, brakes the turning of the wheel and the swivel rotation.

Approved and tested load capacity

Dynamic 150 kg

Static 180 kg

Temperature range:

Continuous operation: -25 | +80°C

Short (10 min) exposure: -30 | +110°C

Advantages of this Soft floor wheel Swivel castor with brake:

- ✓ force to start
- ✓ ride
- ✓ to surface when stationed

LIV SYSTEMS standard Swivel castor with brake + elastic rubber tyre Ø100 x W35mm for 150kg Prod ID: 40244

ID 40244: Castor overall height 128 mm | 4 mounting holes with distance #\$\$ mm | Wheel with plain bearing and elastic rubber tyre with hardness 70 ° shore A | The double brake system, brakes the turning of the wheel and the swivel rotation. | Soft floor

Product information

- Article code 2-045-20D
- SKU 40244
- EAN 3838461402449

Specifications

The result of our quality is maximum performance!

[Close](#)

[Close](#)



Product description

standard Swivel castor with brake with an overall height of 128 mm
 Wheel diameter x width: 100 x 35 mm
 Top plate with 4 mounting holes of 12,5 mm, mounting hole distance #\$\$ mm and top plate outer dimensions: 70 mm
 Wheel with roller bearing and elastic rubber tyre with hardness 70 ° shore A on polyamide
 the double brake system, brakes the turning of the wheel and the swivel rotation.

Approved and tested load capacity

Dynamic 150 kg
 Static 180 kg

Temperature range:

Continious operation: -25 | +80°C
 Short (10 min) exposure: -30 | +110°C

Advantages of this Soft floor wheel Swivel castor with brake:

- ✓ force to start
- ✓ ride
- ✓ to surface when stationed

LIV SYSTEMS standard Swivel castor with brake + elastic rubber tyre Ø100 x W35mm for 150kg Prod ID: 40245

ID 40245: Castor overall height 128 mm | 4 mounting holes with distance #\$\$ mm | Wheel with roller bearing and elastic rubber tyre with hardness 70 ° shore A | The double brake system, brakes the turning of the wheel and the swivel rotation. | Soft floor

Product information

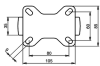
- Article code 2-045-20V
- SKU 40245
- EAN 3838461402456

Specifications

The result of our quality is maximum performance!

[Close](#)

[Close](#)



Product description

standard Fixed castor with an overall height of 128 mm

Wheel diameter x width: 100 x 35 mm

Top plate with 4 mounting holes of 9 mm, mounting hole distance 80x60 mm and top plate outer dimensions: 105x85 mm

Wheel with plain bearing and elastic rubber tyre with hardness 70 ° shore A on polyamide.

Approved and tested load capacity

Dynamic 150 kg

Static 180 kg

Temperature range:

Continuous operation: -25 | +80°C

Short (10 min) exposure: -30 | +110°C

Advantages of this Soft floor wheel Fixed castor:

- ✓ force to start
- ✓ ride
- ✓ to surface when stationed

LIV SYSTEMS standard Fixed castor + elastic rubber tyre Ø100 x W35mm for 150kg Prod ID: 39874

ID 39874: Castor overall height 128 mm | 4 mounting holes with distance 80x60 mm | Wheel with plain bearing and elastic rubber tyre with hardness 70 ° shore A | Soft floor wheel, low force to start, smooth ride, gentle to surface when stationed

Product information

- Article code 2-041-20D
- SKU 39874
- EAN 3838461398742

Specifications

The result of our quality is maximum performance!

[Close](#)

[Close](#)



Product description

standard Fixed castor with an overall height of 128 mm

Wheel diameter x width: 100 x 35 mm

Top plate with 4 mounting holes of 9 mm, mounting hole distance 80x60 mm and top plate outer dimensions: 105x85 mm

Wheel with ball bearing and elastic rubber tyre with hardness 70 ° shore A on polyamide.

Approved and tested load capacity

Dynamic 150 kg

Static 180 kg

Temperature range:

Continuous operation: -25 | +80°C

Short (10 min) exposure: -30 | +110°C

Advantages of this Soft floor wheel Fixed castor:

- ✓ force to start
- ✓ ride
- ✓ to surface when stationed

LIV SYSTEMS standard Fixed castor + elastic rubber tyre Ø100 x W35mm for 150kg Prod ID: 39883

ID 39883: Castor overall height 128 mm | 4 mounting holes with distance 80x60 mm | Wheel with ball bearing and elastic rubber tyre with hardness 70 ° shore A | Soft floor wheel, low force to start, smooth ride, gentle to surface when stationed

Product information

- Article code 2-041-20K
- SKU 39883
- EAN 3838461398834

Specifications

The result of our quality is maximum performance!

Алматы (7273)495-231
Ангарск (3955)60-70-56
Архангельск (8182)63-90-72
Астрахань (8512)99-46-04
Барнаул (3852)73-04-60
Белгород (4722)40-23-64
Благовещенск (4162)22-76-07
Брянск (4832)59-03-52
Владивосток (423)249-28-31
Владикавказ (8672)28-90-48
Владимир (4922)49-43-18
Волгоград (844)278-03-48
Вологда (8172)26-41-59
Воронеж (473)204-51-73
Екатеринбург (343)384-55-89

Иваново (4932)77-34-06
Ижевск (3412)26-03-58
Иркутск (395)279-98-46
Казань (843)206-01-48
Калининград (4012)72-03-81
Калуга (4842)92-23-67
Кемерово (3842)65-04-62
Киров (8332)68-02-04
Коломна (4966)23-41-49
Кострома (4942)77-07-48
Краснодар (861)203-40-90
Красноярск (391)204-63-61
Курск (4712)77-13-04
Курган (3522)50-90-47
Липецк (4742)52-20-81

Россия +7(495)268-04-70

Магнитогорск (3519)55-03-13
Москва (495)268-04-70
Мурманск (8152)59-64-93
Набережные Челны (8552)20-53-41
Нижний Новгород (831)429-08-12
Новокузнецк (3843)20-46-81
Ноябрьск (3496)41-32-12
Новосибирск (383)227-86-73
Омск (3812)21-46-40
Орел (4862)44-53-42
Оренбург (3532)37-68-04
Пенза (8412)22-31-16
Петрозаводск (8142)55-98-37
Псков (8112)59-10-37
Пермь (342)205-81-47

Казахстан +7(7172)727-132

Ростов-на-Дону (863)308-18-15
Рязань (4912)46-61-64
Самара (846)206-03-16
Санкт-Петербург (812)309-46-40
Саратов (845)249-38-78
Севастополь (8692)22-31-93
Саранск (8342)22-96-24
Симферополь (3652)67-13-56
Смоленск (4812)29-41-54
Сочи (862)225-72-31
Ставрополь (8652)20-65-13
Сургут (3462)77-98-35
Сыктывкар (8212)25-95-17
Тамбов (4752)50-40-97
Тверь (4822)63-31-35

Киргизия +996(312)96-26-47

Тольятти (8482)63-91-07
Томск (3822)98-41-53
Тула (4872)33-79-87
Тюмень (3452)66-21-18
Ульяновск (8422)24-23-59
Улан-Удэ (3012)59-97-51
Уфа (347)229-48-12
Хабаровск (4212)92-98-04
Чебоксары (8352)28-53-07
Челябинск (351)202-03-61
Череповец (8202)49-02-64
Чита (3022)38-34-83
Якутск (4112)23-90-97
Ярославль (4852)69-52-93

<https://liv.nt-rt.ru/> || vis@nt-rt.ru