

Product description

standard Swivel castor with brake with an overall height of 128 mm
Wheel diameter x width: 100 x 38 mm
Top plate with 4 mounting holes of 9 mm, mounting hole distance 80x60 mm and top plate outer dimensions: 105x85 mm
Wheel with ball bearing and solid polypropylene wheel with hardness 60±5 Shore D
the double brake system, brakes the turning of the wheel and the swivel rotation.

Approved and tested load capacity

Dynamic 200 kg
Static 250 kg

Temperature range:

Continuous operation: -20 | +60°C
Short (10 min) exposure: 1°C

Advantages of this Long floor drive Swivel castor with brake:

- ✓ acidic environment
- ✓ wear off
- ✓ rolling resistance

LIV SYSTEMS standard Swivel castor with brake + solid polypropylene wheel Ø100 x W38mm for 200kg Prod ID: 42815

ID 42815: Castor overall height 128 mm | 4 mounting holes with distance 80x60 mm | Wheel with ball bearing and solid polypropylene wheel with hardness 60±5 Shore D | The double brake system, brakes the turning of the wheel and the swivel rotation. | Long

Product information

- Article code 2-722-20K
- SKU 42815
- EAN 3838461428159

Алматы (7273)495-231
Ангарск (3955)60-70-56
Архангельск (8182)63-90-72
Астрахань (8512)99-46-04
Барнаул (3852)73-04-60
Белгород (4722)40-23-64
Благовещенск (4162)22-76-07
Брянск (4832)59-03-52
Владивосток (423)249-28-31
Владикавказ (8672)28-90-48
Владимир (4922)49-43-18
Волгоград (844)278-03-48
Вологда (8172)26-41-59
Воронеж (473)204-51-73
Екатеринбург (343)384-55-89

Иваново (4932)77-34-06
Ижевск (3412)26-03-58
Иркутск (395)279-98-46
Казань (843)206-01-48
Калининград (4012)72-03-81
Калуга (4842)92-23-67
Кемерово (3842)65-04-62
Киров (8332)68-02-04
Коломна (4966)23-41-49
Кострома (4942)77-07-48
Краснодар (861)203-40-90
Красноярск (391)204-63-61
Курск (4712)77-13-04
Курган (3522)50-90-47
Липецк (4742)52-20-81

Магнитогорск (3519)55-03-13
Москва (495)268-04-70
Мурманск (8152)59-64-93
Набережные Челны (8552)20-53-41
Нижний Новгород (831)429-08-12
Новокузнецк (3843)20-46-81
Новосибирск (383)227-86-73
Омск (3812)21-46-40
Орел (4862)44-53-42
Оренбург (3532)37-68-04
Пенза (8412)22-31-16
Петрозаводск (8142)55-98-37
Псков (8112)59-10-37
Пермь (342)205-81-47

Ростов-на-Дону (863)308-18-15
Рязань (4912)46-61-64
Самара (846)206-03-16
Санкт-Петербург (812)309-46-40
Саратов (845)249-38-78
Севастополь (8692)22-31-93
Саранск (8342)22-96-24
Симферополь (3652)67-13-56
Смоленск (4812)29-41-54
Сочи (862)225-72-31
Ставрополь (8652)20-65-13
Сургут (3462)77-98-35
Сыктывкар (8212)25-95-17
Тамбов (4752)50-40-97
Тверь (4822)63-31-35

Тольятти (8482)63-91-07
Томск (3822)98-41-53
Тула (4872)33-79-87
Тюмень (3452)66-21-18
Ульяновск (8422)24-23-59
Улан-Удэ (3012)59-97-51
Уфа (347)229-48-12
Хабаровск (4212)92-98-04
Чابоксары (8352)28-53-07
Челябинск (351)202-03-61
Череповец (8202)49-02-64
Чита (3022)38-34-83
Якутск (4112)23-90-97
Ярославль (4852)69-52-93

Россия +7(495)268-04-70

Казахстан +7(7172)727-132

Киргизия +996(312)96-26-47

<https://liv.nt-rt.ru/> || vis@nt-rt.ru



Product description

standard Wheel with ball bearing and solid polypropylene wheel with hardness 60±5 Shore D

Wheel diameter x width: 100 x 35 mm

Axle hole: 8,5 mm

Hub length: mm

Approved and tested load capacity

Dynamic 125 kg

Static 150 kg

Temperature range:

Continuous operation: -20 | +60°C

Short (10 min) exposure: /°C

Advantages of this Long floor drive wheel:

- ✓ acidic environment
- ✓ wear off
- ✓ rolling resistance

LIV SYSTEMS standard wheel + solid polypropylene wheel Ø100 x W35mm for 125kg Prod ID: 42643

ID 42643: standard Wheel with ball bearing and solid polypropylene wheel with hardness 60±5 Shore D | Axle hole: 8,5 mm | Hub length: mm | Long floor drive, for acidic environment, low wear off, low rolling resistance

Product information

- Article code 2-681-20K
- SKU 42643
- EAN 3838461426438



Product description

standard Wheel with ball bearing and solid polypropylene wheel with hardness 60±5 Shore D

Wheel diameter x width: 100 x 35 mm

Axle hole: 8,5 mm

Hub length: mm

Approved and tested load capacity

Dynamic 125 kg

Static 150 kg

Temperature range:

Continuous operation: -20 | +60°C

Short (10 min) exposure: /°C

Advantages of this Long floor drive wheel:

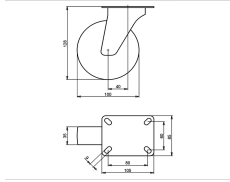
- ✓ acidic environment
- ✓ wear off
- ✓ rolling resistance

LIV SYSTEMS standard wheel + solid polypropylene wheel Ø100 x W35mm for 125kg Prod ID: 42644

ID 42644: standard Wheel with ball bearing and solid polypropylene wheel with hardness 60±5 Shore D | Axle hole: 8,5 mm | Hub length: mm | Long floor drive, for acidic environment, low wear off, low rolling resistance

Product information

- Article code 2-681-20K
- SKU 42644
- EAN 3838461426445



Product description

standard Swivel castor with an overall height of 128 mm

Wheel diameter x width: 100 x 35 mm

Top plate with 4 mounting holes of 9 mm, mounting hole distance 80x60 mm and top plate outer dimensions: 105x85 mm

Wheel with ball bearing and solid polypropylene wheel with hardness 60±5 Shore D.

Approved and tested load capacity

Dynamic 125 kg

Static 150 kg

Temperature range:

Continuous operation: -20 | +60°C

Short (10 min) exposure: /°C

Advantages of this Long floor drive Swivel castor:

- ✓ acidic environment
- ✓ wear off
- ✓ rolling resistance

LIV SYSTEMS standard Swivel castor + solid polypropylene wheel Ø100 x W35mm for 125kg Prod ID: 44021

ID 44021: Castor overall height 128 mm | 4 mounting holes with distance 80x60 mm | Wheel with ball bearing and solid polypropylene wheel with hardness 60±5 Shore D | Long floor drive, for acidic environment, low wear off, low rolling resistance

Product information

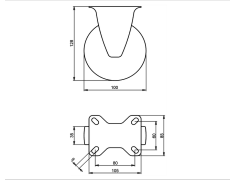
- Article code 2-671-20K
- SKU 44021
- EAN 3838461440212

Specifications

The result of our quality is maximum performance!

[Close](#)

[Close](#)



Product description

standard Fixed castor with an overall height of 128 mm

Wheel diameter x width: 100 x 35 mm

Top plate with 4 mounting holes of 9 mm, mounting hole distance 80x60 mm and top plate outer dimensions: 105x85 mm

Wheel with roller bearing and solid polypropylene wheel with hardness 60±5 Shore D.

Approved and tested load capacity

Dynamic 125 kg

Static 150 kg

Temperature range:

Continuous operation: -20 | +60°C

Short (10 min) exposure: /°C

Advantages of this Long floor drive Fixed castor:

- ✓ acidic environment
- ✓ wear off
- ✓ rolling resistance

LIV SYSTEMS standard Fixed castor + solid polypropylene wheel Ø100 x W35mm for 125kg Prod ID: 32484

ID 32484: Castor overall height 128 mm | 4 mounting holes with distance 80x60 mm | Wheel with roller bearing and solid polypropylene wheel with hardness 60±5 Shore D | Long floor drive, for acidic environment, low wear off, low rolling resistance

Product information

- Article code 2-666 A
- SKU 32484
- EAN 3838461324840

Specifications

The result of our quality is maximum performance!

[Close](#)

[Close](#)



Product description

standard Wheel with roller bearing and solid polypropylene wheel with hardness 60±5 Shore D

Wheel diameter x width: 100 x 35 mm

Axle hole: 12 mm

Hub length: mm

Approved and tested load capacity

Dynamic 125 kg

Static 150 kg

Temperature range:

Continuous operation: -20 | +60°C

Short (10 min) exposure: /°C

Advantages of this Long floor drive wheel:

- ✓ acidic environment
- ✓ wear off
- ✓ rolling resistance

LIV SYSTEMS standard wheel + solid polypropylene wheel Ø100 x W35mm for 125kg Prod ID: 58475

ID 58475: standard Wheel with roller bearing and solid polypropylene wheel with hardness 60±5 Shore D | Axle hole: 12 mm | Hub length: mm | Long floor drive, for acidic environment, low wear off, low rolling resistance

Product information

- Article code 2-751 ISO
- SKU 58475
- EAN 3838461584756



Product description

standard Wheel with plain bearing and solid polypropylene wheel with hardness 60±5 Shore D

Wheel diameter x width: 100 x 35 mm

Axle hole: 12 mm

Hub length: mm

Approved and tested load capacity

Dynamic 125 kg

Static 150 kg

Temperature range:

Continuous operation: -20 | +60°C

Short (10 min) exposure: /°C

Advantages of this Long floor drive wheel:

- ✓ acidic environment
- ✓ wear off
- ✓ rolling resistance

LIV SYSTEMS standard wheel + solid polypropylene wheel Ø100 x W35mm for 125kg Prod ID: 65054

ID 65054: standard Wheel with plain bearing and solid polypropylene wheel with hardness 60±5 Shore D | Axle hole: 12 mm | Hub length: mm | Long floor drive, for acidic environment, low wear off, low rolling resistance

Product information

- Article code 2-761 ISO
- SKU 65054
- EAN 3838461650543



Product description

standard Wheel with plain bearing and solid polypropylene wheel with hardness 60±5 Shore D

Wheel diameter x width: 100 x 35 mm

Axle hole: 12 mm

Hub length: mm

Approved and tested load capacity

Dynamic 125 kg

Static 150 kg

Temperature range:

Continuous operation: -20 | +60°C

Short (10 min) exposure: /°C

Advantages of this Long floor drive wheel:

- ✓ acidic environment
- ✓ wear off
- ✓ rolling resistance

LIV SYSTEMS standard wheel + solid polypropylene wheel Ø100 x W35mm for 125kg Prod ID: 59216

ID 59216: standard Wheel with plain bearing and solid polypropylene wheel with hardness 60±5 Shore D | Axle hole: 12 mm | Hub length: mm | Long floor drive, for acidic environment, low wear off, low rolling resistance

Product information

- Article code 2-761 ISO
- SKU 59216
- EAN 3838461592164



Product description

standard Wheel with roller bearing and solid polypropylene wheel with hardness 60±5 Shore D

Wheel diameter x width: 100 x 35 mm

Axle hole: 12 mm

Hub length: mm

Approved and tested load capacity

Dynamic 125 kg

Static 150 kg

Temperature range:

Continuous operation: -20 | +60°C

Short (10 min) exposure: /°C

Advantages of this Long floor drive wheel:

- ✓ acidic environment
- ✓ wear off
- ✓ rolling resistance

LIV SYSTEMS standard wheel + solid polypropylene wheel Ø100 x W35mm for 125kg Prod ID: 67035

ID 67035: standard Wheel with roller bearing and solid polypropylene wheel with hardness 60±5 Shore D | Axle hole: 12 mm | Hub length: mm | Long floor drive, for acidic environment, low wear off, low rolling resistance

Product information

- Article code 2-751 ISO
- SKU 67035
- EAN 3838461670350



Product description

standard Wheel with ball bearing and solid polypropylene wheel with hardness 60±5 Shore D

Wheel diameter x width: 100 x 35 mm

Axle hole: 12 mm

Hub length: mm

Approved and tested load capacity

Dynamic 125 kg

Static 150 kg

Temperature range:

Continuous operation: -20 | +60°C

Short (10 min) exposure: /°C

Advantages of this Long floor drive wheel:

- ✓ acidic environment
- ✓ wear off
- ✓ rolling resistance

LIV SYSTEMS standard wheel + solid polypropylene wheel Ø100 x W35mm for 125kg Prod ID: 42763

ID 42763: standard Wheel with ball bearing and solid polypropylene wheel with hardness 60±5 Shore D | Axle hole: 12 mm | Hub length: mm | Long floor drive, for acidic environment, low wear off, low rolling resistance

Product information

- Article code 2-682-20K
- SKU 42763
- EAN 3838461427633



Product description

standard Wheel with ball bearing and solid polypropylene wheel with hardness 60±5 Shore D

Wheel diameter x width: 100 x 35 mm

Axle hole: 12 mm

Hub length: mm

Approved and tested load capacity

Dynamic 125 kg

Static 150 kg

Temperature range:

Continuous operation: -20 | +60°C

Short (10 min) exposure: /°C

Advantages of this Long floor drive wheel:

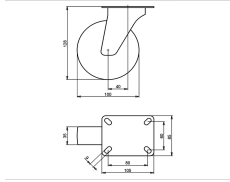
- ✓ acidic environment
- ✓ wear off
- ✓ rolling resistance

LIV SYSTEMS standard wheel + solid polypropylene wheel Ø100 x W35mm for 125kg Prod ID: 42755

ID 42755: standard Wheel with ball bearing and solid polypropylene wheel with hardness 60±5 Shore D | Axle hole: 12 mm | Hub length: mm | Long floor drive, for acidic environment, low wear off, low rolling resistance

Product information

- Article code 2-682-20K
- SKU 42755
- EAN 3838461427558



Product description

standard Swivel castor with an overall height of 128 mm

Wheel diameter x width: 100 x 35 mm

Top plate with 4 mounting holes of 9 mm, mounting hole distance 80x60 mm and top plate outer dimensions: 105x85 mm

Wheel with plain bearing and solid polypropylene wheel with hardness 60±5 Shore D.

Approved and tested load capacity

Dynamic 125 kg

Static 150 kg

Temperature range:

Continuous operation: -20 | +60°C

Short (10 min) exposure: /°C

Advantages of this Long floor drive Swivel castor:

- ✓ acidic environment
- ✓ wear off
- ✓ rolling resistance

LIV SYSTEMS standard Swivel castor + solid polypropylene wheel Ø100 x W35mm for 125kg Prod ID: 31645

ID 31645: Castor overall height 128 mm | 4 mounting holes with distance 80x60 mm | Wheel with plain bearing and solid polypropylene wheel with hardness 60±5 Shore D | Long floor drive, for acidic environment, low wear off, low rolling resistance

Product information

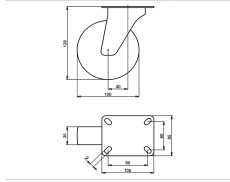
- Article code 2-671 A
- SKU 31645
- EAN 3838461316456

Specifications

The result of our quality is maximum performance!

[Close](#)

[Close](#)



Product description

standard Swivel castor with an overall height of 128 mm

Wheel diameter x width: 100 x 35 mm

Top plate with 4 mounting holes of 9 mm, mounting hole distance 80x60 mm and top plate outer dimensions: 105x85 mm

Wheel with roller bearing and solid polypropylene wheel with hardness 60±5 Shore D.

Approved and tested load capacity

Dynamic 125 kg

Static 150 kg

Temperature range:

Continuous operation: -20 | +60°C

Short (10 min) exposure: /°C

Advantages of this Long floor drive Swivel castor:

- ✓ acidic environment
- ✓ wear off
- ✓ rolling resistance

LIV SYSTEMS standard Swivel castor + solid polypropylene wheel Ø100 x W35mm for 125kg Prod ID: 32385

ID 32385: Castor overall height 128 mm | 4 mounting holes with distance 80x60 mm | Wheel with roller bearing and solid polypropylene wheel with hardness 60±5 Shore D | Long floor drive, for acidic environment, low wear off, low rolling resistance

Product information

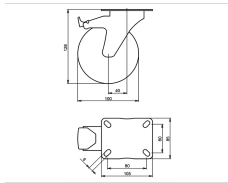
- Article code 2-661 A
- SKU 32385
- EAN 3838461323850

Specifications

The result of our quality is maximum performance!

[Close](#)

[Close](#)



Product description

standard Swivel castor with brake with an overall height of 128 mm
Wheel diameter x width: 100 x 35 mm
Top plate with 4 mounting holes of 9 mm, mounting hole distance 80x60 mm and top plate outer dimensions: 105x85 mm
Wheel with plain bearing and solid polypropylene wheel with hardness 60±5 Shore D
the double brake system, brakes the turning of the wheel and the swivel rotation.

Approved and tested load capacity

Dynamic 125 kg
Static 150 kg

Temperature range:

Continuous operation: -20 | +60°C
Short (10 min) exposure: /°C

Advantages of this Long floor drive Swivel castor with brake:

- ✓ acidic environment
- ✓ wear off
- ✓ rolling resistance

LIV SYSTEMS standard Swivel castor with brake + solid polypropylene wheel Ø100 x W35mm for 125kg Prod ID: 30535

ID 30535: Castor overall height 128 mm | 4 mounting holes with distance 80x60 mm | Wheel with plain bearing and solid polypropylene wheel with hardness 60±5 Shore D | The double brake system, brakes the turning of the wheel and the swivel rotation. | Lon

Product information

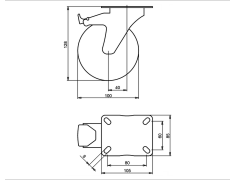
- Article code 2-683 A
- SKU 30535
- EAN 3838461305351

Specifications

The result of our quality is maximum performance!

[Close](#)

[Close](#)



Product description

standard Swivel castor with brake with an overall height of 128 mm
Wheel diameter x width: 100 x 35 mm
Top plate with 4 mounting holes of 9 mm, mounting hole distance 80x60 mm and top plate outer dimensions: 105x85 mm
Wheel with roller bearing and solid polypropylene wheel with hardness 60±5 Shore D
the double brake system, brakes the turning of the wheel and the swivel rotation.

Approved and tested load capacity

Dynamic 125 kg
Static 150 kg

Temperature range:

Continuous operation: -20 | +60°C
Short (10 min) exposure: /°C

Advantages of this Long floor drive Swivel castor with brake:

- ✓ acidic environment
- ✓ wear off
- ✓ rolling resistance

LIV SYSTEMS standard Swivel castor with brake + solid polypropylene wheel Ø100 x W35mm for 125kg Prod ID: 30533

ID 30533: Castor overall height 128 mm | 4 mounting holes with distance 80x60 mm | Wheel with roller bearing and solid polypropylene wheel with hardness 60±5 Shore D | The double brake system, brakes the turning of the wheel and the swivel rotation. | Lo

Product information

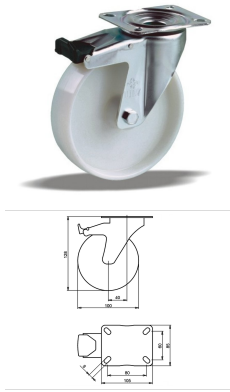
- Article code 2-722 A
- SKU 30533
- EAN 3838461305337

Specifications

The result of our quality is maximum performance!

[Close](#)

[Close](#)



Product description

standard Swivel castor with brake with an overall height of 128 mm
 Wheel diameter x width: 100 x 35 mm
 Top plate with 4 mounting holes of 9 mm, mounting hole distance 80x60 mm and top plate outer dimensions: 105x85 mm
 Wheel with plain bearing and solid polypropylene wheel with hardness 60±5 Shore D
 the double brake system, brakes the turning of the wheel and the swivel rotation.

Approved and tested load capacity

Dynamic 125 kg
 Static 150 kg

Temperature range:

Continuous operation: -20 | +60°C
 Short (10 min) exposure: /°C

Advantages of this Long floor drive Swivel castor with brake:

- ✓ acidic environment
- ✓ wear off
- ✓ rolling resistance

LIV SYSTEMS standard Swivel castor with brake + solid polypropylene wheel Ø100 x W35mm for 125kg Prod ID: 30645

ID 30645: Castor overall height 128 mm | 4 mounting holes with distance 80x60 mm | Wheel with plain bearing and solid polypropylene wheel with hardness 60±5 Shore D | The double brake system, brakes the turning of the wheel and the swivel rotation. | Lon

Product information

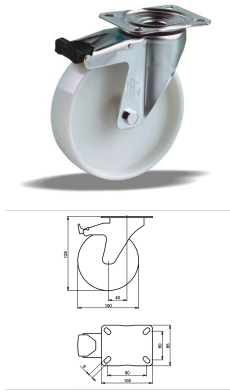
- Article code 2-683 A
- SKU 30645
- EAN 3838461306457

Specifications

The result of our quality is maximum performance!

[Close](#)

[Close](#)



Product description

standard Swivel castor with brake with an overall height of 128 mm
 Wheel diameter x width: 100 x 35 mm
 Top plate with 4 mounting holes of 9 mm, mounting hole distance 80x60 mm and top plate outer dimensions: 105x85 mm
 Wheel with roller bearing and solid polypropylene wheel with hardness 60±5 Shore D
 the double brake system, brakes the turning of the wheel and the swivel rotation.

Approved and tested load capacity

Dynamic 125 kg
 Static 150 kg

Temperature range:

Continuous operation: -20 | +60°C
 Short (10 min) exposure: /°C

Advantages of this Long floor drive Swivel castor with brake:

- ✓ acidic environment
- ✓ wear off
- ✓ rolling resistance

LIV SYSTEMS standard Swivel castor with brake + solid polypropylene wheel Ø100 x W35mm for 125kg Prod ID: 30595

ID 30595: Castor overall height 128 mm | 4 mounting holes with distance 80x60 mm | Wheel with roller bearing and solid polypropylene wheel with hardness 60±5 Shore D | The double brake system, brakes the turning of the wheel and the swivel rotation. | Lo

Product information

- Article code 2-722 A
- SKU 30595
- EAN 3838461305955

Specifications

The result of our quality is maximum performance!

[Close](#)

[Close](#)



Product description

standard Swivel castor with brake with an overall height of 128 mm

Wheel diameter x width: 100 x 38 mm

Top plate with 4 mounting holes of 9 mm, mounting hole distance 80x60 mm and top plate outer dimensions: 105x85 mm

Wheel with ball bearing and solid polypropylene wheel with hardness 60±5 Shore D
the double brake system, brakes the turning of the wheel and the swivel rotation.

Approved and tested load capacity

Dynamic 125 kg

Static 150 kg

Temperature range:

Continuous operation: -20 | +60°C

Short (10 min) exposure: /°C

Advantages of this Long floor drive Swivel castor with brake:

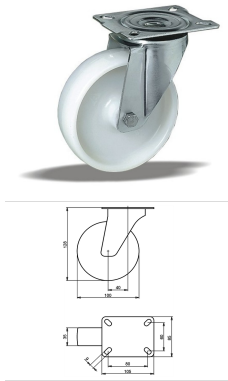
- ✓ acidic environment
- ✓ wear off
- ✓ rolling resistance

LIV SYSTEMS standard Swivel castor with brake + solid polypropylene wheel Ø100 x W38mm for 125kg Prod ID: 42814

ID 42814: Castor overall height 128 mm | 4 mounting holes with distance 80x60 mm | Wheel with ball bearing and solid polypropylene wheel with hardness 60±5 Shore D | The double brake system, brakes the turning of the wheel and the swivel rotation. | Long

Product information

- 
- Article code 2-722-20K
 - SKU 42814
 - EAN 3838461428142



Product description

standard Swivel castor with an overall height of 128 mm

Wheel diameter x width: 100 x 35 mm

Top plate with 4 mounting holes of 9 mm, mounting hole distance 80x60 mm and top plate outer dimensions: 105x85 mm

Wheel with plain bearing and solid polypropylene wheel with hardness 60±5 Shore D.

Approved and tested load capacity

Dynamic 125 kg

Static 150 kg

Temperature range:

Continuous operation: -20 | +60°C

Short (10 min) exposure: /°C

Advantages of this Long floor drive Swivel castor:

- ✓ acidic environment
- ✓ wear off
- ✓ rolling resistance

LIV SYSTEMS standard Swivel castor + solid polypropylene wheel Ø100 x W35mm for 125kg Prod ID: 31644

ID 31644: Castor overall height 128 mm | 4 mounting holes with distance 80x60 mm | Wheel with plain bearing and solid polypropylene wheel with hardness 60±5 Shore D | Long floor drive, for acidic environment, low wear off, low rolling resistance

Product information

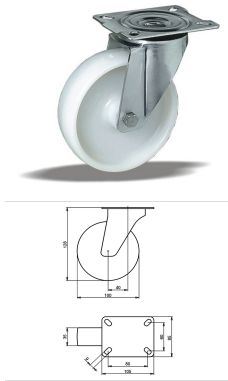
- Article code 2-671A
- SKU 31644
- EAN 3838461316449

Specifications

The result of our quality is maximum performance!

[Close](#)

[Close](#)



Product description

standard Swivel castor with an overall height of 128 mm

Wheel diameter x width: 100 x 35 mm

Top plate with 4 mounting holes of 9 mm, mounting hole distance 80x60 mm and top plate outer dimensions: 105x85 mm

Wheel with roller bearing and solid polypropylene wheel with hardness 60±5 Shore D.

Approved and tested load capacity

Dynamic 125 kg

Static 150 kg

Temperature range:

Continuous operation: -20 | +60°C

Short (10 min) exposure: /°C

Advantages of this Long floor drive Swivel castor:

- ✓ acidic environment
- ✓ wear off
- ✓ rolling resistance

LIV SYSTEMS standard Swivel castor + solid polypropylene wheel Ø100 x W35mm for 125kg Prod ID: 32393

ID 32393: Castor overall height 128 mm | 4 mounting holes with distance 80x60 mm | Wheel with roller bearing and solid polypropylene wheel with hardness 60±5 Shore D | Long floor drive, for acidic environment, low wear off, low rolling resistance

Product information

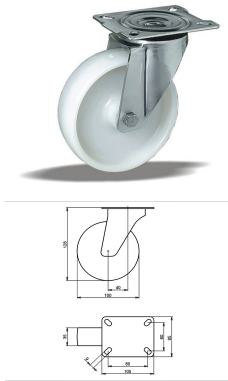
- Article code 2-661 A
- SKU 32393
- EAN 3838461323935

Specifications

The result of our quality is maximum performance!

[Close](#)

[Close](#)



Product description

standard Swivel castor with an overall height of 128 mm

Wheel diameter x width: 100 x 35 mm

Top plate with 4 mounting holes of 9 mm, mounting hole distance 80x60 mm and top plate outer dimensions: 105x85 mm

Wheel with ball bearing and solid polypropylene wheel with hardness 60±5 Shore D.

Approved and tested load capacity

Dynamic 125 kg

Static 150 kg

Temperature range:

Continuous operation: -20 | +60°C

Short (10 min) exposure: /°C

Advantages of this Long floor drive Swivel castor:

- ✓ acidic environment
- ✓ wear off
- ✓ rolling resistance

LIV SYSTEMS standard Swivel castor + solid polypropylene wheel Ø100 x W35mm for 125kg Prod ID: 44022

ID 44022: Castor overall height 128 mm | 4 mounting holes with distance 80x60 mm | Wheel with ball bearing and solid polypropylene wheel with hardness 60±5 Shore D | Long floor drive, for acidic environment, low wear off, low rolling resistance

Product information

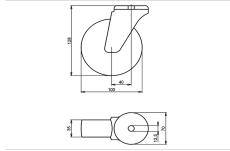
- Article code 2-671-20K
- SKU 44022
- EAN 3838461440229

Specifications

The result of our quality is maximum performance!

[Close](#)

[Close](#)



Product description

standard Swivel castor with an overall height of 128 mm

Wheel diameter x width: 100 x 35 mm

Top plate with 4 mounting holes of 12,5 mm, mounting hole distance #\$\$ mm and top plate outer dimensions: 70 mm

Wheel with plain bearing and solid polypropylene wheel with hardness 60±5 Shore D.

Approved and tested load capacity

Dynamic 125 kg

Static 150 kg

Temperature range:

Continuous operation: -20 | +60°C

Short (10 min) exposure: /°C

Advantages of this Long floor drive Swivel castor:

- ✓ acidic environment
- ✓ wear off
- ✓ rolling resistance

LIV SYSTEMS standard Swivel castor + solid polypropylene wheel Ø100 x W35mm for 125kg Prod ID: 34274

ID 34274: Castor overall height 128 mm | 4 mounting holes with distance #\$\$ mm | Wheel with plain bearing and solid polypropylene wheel with hardness 60±5 Shore D | Long floor drive, for acidic environment, low wear off, low rolling resistance

Product information

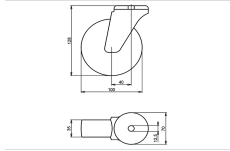
- Article code 2-766 L12
- SKU 34274
- EAN 3838461342745

Specifications

The result of our quality is maximum performance!

[Close](#)

[Close](#)



Product description

standard Swivel castor with an overall height of 128 mm

Wheel diameter x width: 100 x 35 mm

Top plate with 4 mounting holes of 12,5 mm, mounting hole distance #\$\$% mm and top plate outer dimensions: 70 mm

Wheel with roller bearing and solid polypropylene wheel with hardness 60±5 Shore D.

Approved and tested load capacity

Dynamic 125 kg

Static 150 kg

Temperature range:

Continuous operation: -20 | +60°C

Short (10 min) exposure: /°C

Advantages of this Long floor drive Swivel castor:

- ✓ acidic environment
- ✓ wear off
- ✓ rolling resistance

LIV SYSTEMS standard Swivel castor + solid polypropylene wheel Ø100 x W35mm for 125kg Prod ID: 34273

ID 34273: Castor overall height 128 mm | 4 mounting holes with distance #\$\$% mm | Wheel with roller bearing and solid polypropylene wheel with hardness 60±5 Shore D | Long floor drive, for acidic environment, low wear off, low rolling resistance

Product information

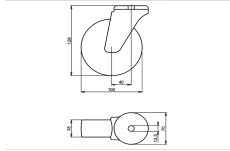
- Article code 2-756 L12
- SKU 34273
- EAN 3838461342738

Specifications

The result of our quality is maximum performance!

[Close](#)

[Close](#)



Product description

standard Swivel castor with an overall height of 128 mm

Wheel diameter x width: 100 x 35 mm

Top plate with 4 mounting holes of 12,5 mm, mounting hole distance #\$\$% mm and top plate outer dimensions: 70 mm

Wheel with ball bearing and solid polypropylene wheel with hardness 60±5 Shore D.

Approved and tested load capacity

Dynamic 125 kg

Static 150 kg

Temperature range:

Continuous operation: -20 | +60°C

Short (10 min) exposure: /°C

Advantages of this Long floor drive Swivel castor:

- ✓ acidic environment
- ✓ wear off
- ✓ rolling resistance

LIV SYSTEMS standard Swivel castor + solid polypropylene wheel Ø100 x W35mm for 125kg Prod ID: 44037

ID 44037: Castor overall height 128 mm | 4 mounting holes with distance #\$\$% mm | Wheel with ball bearing and solid polypropylene wheel with hardness 60±5 Shore D | Long floor drive, for acidic environment, low wear off, low rolling resistance

Product information

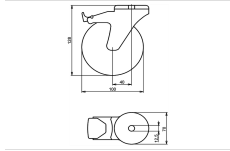
- Article code 2-766-20K
- SKU 44037
- EAN 3838461440373

Specifications

The result of our quality is maximum performance!

[Close](#)

[Close](#)



Product description

standard Swivel castor with brake with an overall height of 128 mm
 Wheel diameter x width: 100 x 35 mm
 Top plate with 4 mounting holes of 12,5 mm, mounting hole distance #\$\$ mm and top plate outer dimensions: 70 mm
 Wheel with plain bearing and solid polypropylene wheel with hardness 60±5 Shore D
 the double brake system, brakes the turning of the wheel and the swivel rotation.

Approved and tested load capacity

Dynamic 125 kg
 Static 150 kg

Temperature range:

Continuous operation: -20 | +60°C
 Short (10 min) exposure: /°C

Advantages of this Long floor drive Swivel castor with brake:

- ✓ acidic environment
- ✓ wear off
- ✓ rolling resistance

LIV SYSTEMS standard Swivel castor with brake + solid polypropylene wheel Ø100 x W35mm for 125kg Prod ID: 34525

ID 34525: Castor overall height 128 mm | 4 mounting holes with distance #\$\$ mm | Wheel with plain bearing and solid polypropylene wheel with hardness 60±5 Shore D | The double brake system, brakes the turning of the wheel and the swivel rotation. | Long

Product information

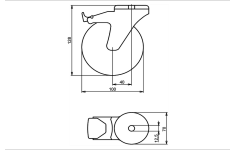
- Article code 2-794 L12
- SKU 34525
- EAN 3838461345258

Specifications

The result of our quality is maximum performance!

[Close](#)

[Close](#)



Product description

standard Swivel castor with brake with an overall height of 128 mm
 Wheel diameter x width: 100 x 35 mm
 Top plate with 4 mounting holes of 12,5 mm, mounting hole distance #\$\$ mm and top plate outer dimensions: 70 mm
 Wheel with roller bearing and solid polypropylene wheel with hardness 60±5 Shore D
 the double brake system, brakes the turning of the wheel and the swivel rotation.

Approved and tested load capacity

Dynamic 125 kg
 Static 150 kg

Temperature range:

Continuous operation: -20 | +60°C
 Short (10 min) exposure: /°C

Advantages of this Long floor drive Swivel castor with brake:

- ✓ acidic environment
- ✓ wear off
- ✓ rolling resistance

LIV SYSTEMS standard Swivel castor with brake + solid polypropylene wheel Ø100 x W35mm for 125kg Prod ID: 34515

ID 34515: Castor overall height 128 mm | 4 mounting holes with distance #\$\$ mm | Wheel with roller bearing and solid polypropylene wheel with hardness 60±5 Shore D | The double brake system, brakes the turning of the wheel and the swivel rotation. | Long

Product information

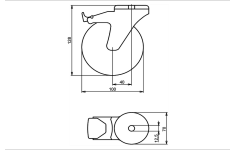
- Article code 2-789 L12
- SKU 34515
- EAN 3838461345159

Specifications

The result of our quality is maximum performance!

[Close](#)

[Close](#)



Product description

standard Swivel castor with brake with an overall height of 128 mm
 Wheel diameter x width: 100 x 35 mm
 Top plate with 4 mounting holes of 12,5 mm, mounting hole distance #\$\$ mm and top plate outer dimensions: 70 mm
 Wheel with ball bearing and solid polypropylene wheel with hardness 60±5 Shore D
 the double brake system, brakes the turning of the wheel and the swivel rotation.

Approved and tested load capacity

Dynamic 125 kg
 Static 150 kg

Temperature range:

Continuous operation: -20 | +60°C
 Short (10 min) exposure: /°C

Advantages of this Long floor drive Swivel castor with brake:

- ✓ acidic environment
- ✓ wear off
- ✓ rolling resistance

LIV SYSTEMS standard Swivel castor with brake + solid polypropylene wheel Ø100 x W35mm for 125kg Prod ID: 42895

ID 42895: Castor overall height 128 mm | 4 mounting holes with distance #\$\$ mm | Wheel with ball bearing and solid polypropylene wheel with hardness 60±5 Shore D | The double brake system, brakes the turning of the wheel and the swivel rotation. | Long f

Product information

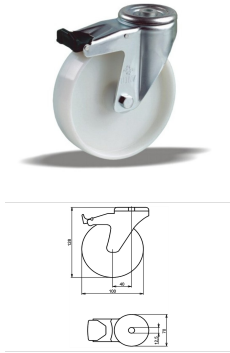
- Article code 2-789-20K
- SKU 42895
- EAN 3838461428951

Specifications

The result of our quality is maximum performance!

[Close](#)

[Close](#)



Product description

standard Swivel castor with brake with an overall height of 128 mm
Wheel diameter x width: 100 x 35 mm
Top plate with 4 mounting holes of 12,5 mm, mounting hole distance #\$\$ mm and top plate outer dimensions: 70 mm
Wheel with plain bearing and solid polypropylene wheel with hardness 60±5 Shore D
the double brake system, brakes the turning of the wheel and the swivel rotation.

Approved and tested load capacity

Dynamic 125 kg
Static 150 kg

Temperature range:

Continuous operation: -20 | +60°C
Short (10 min) exposure: /°C

Advantages of this Long floor drive Swivel castor with brake:

- ✓ acidic environment
- ✓ wear off
- ✓ rolling resistance

LIV SYSTEMS standard Swivel castor with brake + solid polypropylene wheel Ø100 x W35mm for 125kg Prod ID: 34593

ID 34593: Castor overall height 128 mm | 4 mounting holes with distance #\$\$ mm | Wheel with plain bearing and solid polypropylene wheel with hardness 60±5 Shore D | The double brake system, brakes the turning of the wheel and the swivel rotation. | Long

Product information

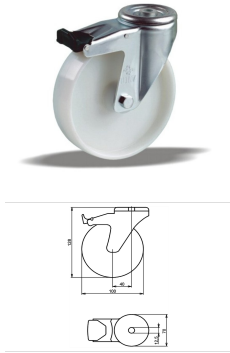
- Article code 2-794 L12
- SKU 34593
- EAN 3838461345937

Specifications

The result of our quality is maximum performance!

[Close](#)

[Close](#)



Product description

standard Swivel castor with brake with an overall height of 128 mm
 Wheel diameter x width: 100 x 35 mm
 Top plate with 4 mounting holes of 12,5 mm, mounting hole distance #\$\$ mm and top plate outer dimensions: 70 mm
 Wheel with roller bearing and solid polypropylene wheel with hardness 60±5 Shore D
 the double brake system, brakes the turning of the wheel and the swivel rotation.

Approved and tested load capacity

Dynamic 125 kg
 Static 150 kg

Temperature range:

Continuous operation: -20 | +60°C
 Short (10 min) exposure: /°C

Advantages of this Long floor drive Swivel castor with brake:

- ✓ acidic environment
- ✓ wear off
- ✓ rolling resistance

LIV SYSTEMS standard Swivel castor with brake + solid polypropylene wheel Ø100 x W35mm for 125kg Prod ID: 34585

ID 34585: Castor overall height 128 mm | 4 mounting holes with distance #\$\$ mm | Wheel with roller bearing and solid polypropylene wheel with hardness 60±5 Shore D | The double brake system, brakes the turning of the wheel and the swivel rotation. | Long

Product information

- Article code 2-789 L12
- SKU 34585
- EAN 3838461345852

Specifications

The result of our quality is maximum performance!

[Close](#)

[Close](#)



Product description

standard Swivel castor with brake with an overall height of 128 mm

Wheel diameter x width: 100 x 35 mm

Top plate with 4 mounting holes of 12,5 mm, mounting hole distance #\$\$ mm and top plate outer dimensions: 70 mm

Wheel with ball bearing and solid polypropylene wheel with hardness 60±5 Shore D
the double brake system, brakes the turning of the wheel and the swivel rotation.

Approved and tested load capacity

Dynamic 125 kg

Static 150 kg

Temperature range:

Continuous operation: -20 | +60°C

Short (10 min) exposure: /°C

Advantages of this Long floor drive Swivel castor with brake:

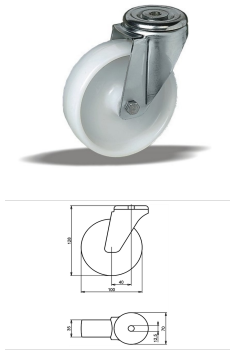
- ✓ acidic environment
- ✓ wear off
- ✓ rolling resistance

LIV SYSTEMS standard Swivel castor with brake + solid polypropylene wheel Ø100 x W35mm for 125kg Prod ID: 42894

ID 42894: Castor overall height 128 mm | 4 mounting holes with distance #\$\$ mm | Wheel with ball bearing and solid polypropylene wheel with hardness 60±5 Shore D | The double brake system, brakes the turning of the wheel and the swivel rotation. | Long f

Product information

- 
- Article code 2-789-20K
 - SKU 42894
 - EAN 3838461428944



Product description

standard Swivel castor with an overall height of 128 mm

Wheel diameter x width: 100 x 35 mm

Top plate with 4 mounting holes of 12,5 mm, mounting hole distance #\$\$ mm and top plate outer dimensions: 70 mm

Wheel with plain bearing and solid polypropylene wheel with hardness 60±5 Shore D.

Approved and tested load capacity

Dynamic 125 kg

Static 150 kg

Temperature range:

Continuous operation: -20 | +60°C

Short (10 min) exposure: /°C

Advantages of this Long floor drive Swivel castor:

- ✓ acidic environment
- ✓ wear off
- ✓ rolling resistance

LIV SYSTEMS standard Swivel castor + solid polypropylene wheel Ø100 x W35mm for 125kg Prod ID: 34335

ID 34335: Castor overall height 128 mm | 4 mounting holes with distance #\$\$ mm | Wheel with plain bearing and solid polypropylene wheel with hardness 60±5 Shore D | Long floor drive, for acidic environment, low wear off, low rolling resistance

Product information

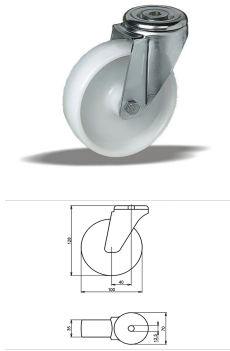
- Article code 2-766 L12
- SKU 34335
- EAN 3838461343353

Specifications

The result of our quality is maximum performance!

[Close](#)

[Close](#)



Product description

standard Swivel castor with an overall height of 128 mm
 Wheel diameter x width: 100 x 35 mm
 Top plate with 4 mounting holes of 12,5 mm, mounting hole distance #\$\$ mm and top plate outer dimensions: 70 mm
 Wheel with roller bearing and solid polypropylene wheel with hardness 60±5 Shore D.

Approved and tested load capacity

Dynamic 125 kg
 Static 150 kg

Temperature range:

Continuous operation: -20 | +60°C
 Short (10 min) exposure: /°C

Advantages of this Long floor drive Swivel castor:

- ✓ acidic environment
- ✓ wear off
- ✓ rolling resistance

LIV SYSTEMS standard Swivel castor + solid polypropylene wheel Ø100 x W35mm for 125kg Prod ID: 34334

ID 34334: Castor overall height 128 mm | 4 mounting holes with distance #\$\$ mm | Wheel with roller bearing and solid polypropylene wheel with hardness 60±5 Shore D | Long floor drive, for acidic environment, low wear off, low rolling resistance

Product information

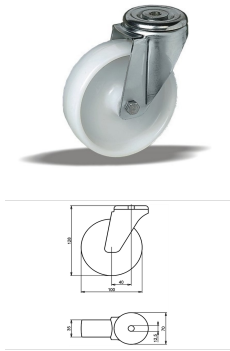
- Article code 2-756 L12
- SKU 34334
- EAN 3838461343346

Specifications

The result of our quality is maximum performance!

[Close](#)

[Close](#)



Product description

standard Swivel castor with an overall height of 128 mm

Wheel diameter x width: 100 x 35 mm

Top plate with 4 mounting holes of 12,5 mm, mounting hole distance #\$\$ mm and top plate outer dimensions: 70 mm

Wheel with ball bearing and solid polypropylene wheel with hardness 60±5 Shore D.

Approved and tested load capacity

Dynamic 125 kg

Static 150 kg

Temperature range:

Continuous operation: -20 | +60°C

Short (10 min) exposure: /°C

Advantages of this Long floor drive Swivel castor:

- ✓ acidic environment
- ✓ wear off
- ✓ rolling resistance

LIV SYSTEMS standard Swivel castor + solid polypropylene wheel Ø100 x W35mm for 125kg Prod ID: 44038

ID 44038: Castor overall height 128 mm | 4 mounting holes with distance #\$\$ mm | Wheel with ball bearing and solid polypropylene wheel with hardness 60±5 Shore D | Long floor drive, for acidic environment, low wear off, low rolling resistance

Product information

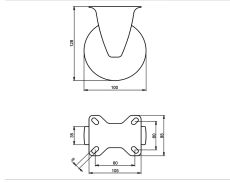
- Article code 2-766-20K
- SKU 44038
- EAN 3838461440380

Specifications

The result of our quality is maximum performance!

[Close](#)

[Close](#)



Product description

standard Fixed castor with an overall height of 128 mm

Wheel diameter x width: 100 x 35 mm

Top plate with 4 mounting holes of 9 mm, mounting hole distance 80x60 mm and top plate outer dimensions: 105x85 mm

Wheel with plain bearing and solid polypropylene wheel with hardness 60±5 Shore D.

Approved and tested load capacity

Dynamic 125 kg

Static 150 kg

Temperature range:

Continuous operation: -20 | +60°C

Short (10 min) exposure: /°C

Advantages of this Long floor drive Fixed castor:

- ✓ acidic environment
- ✓ wear off
- ✓ rolling resistance

LIV SYSTEMS standard Fixed castor + solid polypropylene wheel Ø100 x W35mm for 125kg Prod ID: 31705

ID 31705: Castor overall height 128 mm | 4 mounting holes with distance 80x60 mm | Wheel with plain bearing and solid polypropylene wheel with hardness 60±5 Shore D | Long floor drive, for acidic environment, low wear off, low rolling resistance

Product information

- Article code 2-676 A
- SKU 31705
- EAN 3838461317057

Specifications

The result of our quality is maximum performance!

[Close](#)

[Close](#)



Product description

standard Fixed castor with an overall height of 128 mm

Wheel diameter x width: 100 x 35 mm

Top plate with 4 mounting holes of 9 mm, mounting hole distance 80x60 mm and top plate outer dimensions: 105x85 mm

Wheel with ball bearing and solid polypropylene wheel with hardness 60±5 Shore D.

Approved and tested load capacity

Dynamic 125 kg

Static 150 kg

Temperature range:

Continuous operation: -20 | +60°C

Short (10 min) exposure: /°C

Advantages of this Long floor drive Fixed castor:

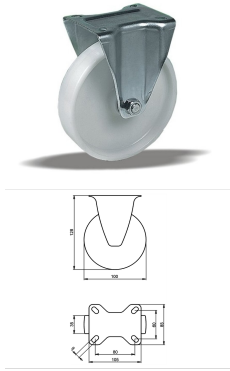
- ✓ acidic environment
- ✓ wear off
- ✓ rolling resistance

LIV SYSTEMS standard Fixed castor + solid polypropylene wheel Ø100 x W35mm for 125kg Prod ID: 42855

ID 42855: Castor overall height 128 mm | 4 mounting holes with distance 80x60 mm | Wheel with ball bearing and solid polypropylene wheel with hardness 60±5 Shore D | Long floor drive, for acidic environment, low wear off, low rolling resistance

Product information

- Article code 2-666-20K
- SKU 42855
- EAN 3838461428555



Product description

standard Fixed castor with an overall height of 128 mm

Wheel diameter x width: 100 x 35 mm

Top plate with 4 mounting holes of 9 mm, mounting hole distance 80x60 mm and top plate outer dimensions: 105x85 mm

Wheel with plain bearing and solid polypropylene wheel with hardness 60±5 Shore D.

Approved and tested load capacity

Dynamic 125 kg

Static 150 kg

Temperature range:

Continuous operation: -20 | +60°C

Short (10 min) exposure: /°C

Advantages of this Long floor drive Fixed castor:

- ✓ acidic environment
- ✓ wear off
- ✓ rolling resistance

LIV SYSTEMS standard Fixed castor + solid polypropylene wheel Ø100 x W35mm for 125kg Prod ID: 31704

ID 31704: Castor overall height 128 mm | 4 mounting holes with distance 80x60 mm | Wheel with plain bearing and solid polypropylene wheel with hardness 60±5 Shore D | Long floor drive, for acidic environment, low wear off, low rolling resistance

Product information

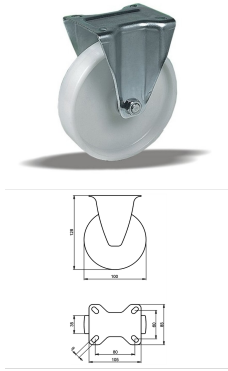
- Article code 2-676 A
- SKU 31704
- EAN 3838461317040

Specifications

The result of our quality is maximum performance!

[Close](#)

[Close](#)



Product description

standard Fixed castor with an overall height of 128 mm

Wheel diameter x width: 100 x 35 mm

Top plate with 4 mounting holes of 9 mm, mounting hole distance 80x60 mm and top plate outer dimensions: 105x85 mm

Wheel with roller bearing and solid polypropylene wheel with hardness 60±5 Shore D.

Approved and tested load capacity

Dynamic 125 kg

Static 150 kg

Temperature range:

Continuous operation: -20 | +60°C

Short (10 min) exposure: /°C

Advantages of this Long floor drive Fixed castor:

- ✓ acidic environment
- ✓ wear off
- ✓ rolling resistance

LIV SYSTEMS standard Fixed castor + solid polypropylene wheel Ø100 x W35mm for 125kg Prod ID: 32485

ID 32485: Castor overall height 128 mm | 4 mounting holes with distance 80x60 mm | Wheel with roller bearing and solid polypropylene wheel with hardness 60±5 Shore D | Long floor drive, for acidic environment, low wear off, low rolling resistance

Product information

- Article code 2-666 A
- SKU 32485
- EAN 3838461324857

Specifications

The result of our quality is maximum performance!

[Close](#)

[Close](#)



Product description

standard Fixed castor with an overall height of 128 mm

Wheel diameter x width: 100 x 35 mm

Top plate with 4 mounting holes of 9 mm, mounting hole distance 80x60 mm and top plate outer dimensions:

105x85 mm

Wheel with ball bearing and solid polypropylene wheel with hardness 60±5 Shore D.

Approved and tested load capacity

Dynamic 125 kg

Static 150 kg

Temperature range:

Continuous operation: -20 | +60°C

Short (10 min) exposure: /°C

Advantages of this Long floor drive Fixed castor:

- ✓ acidic environment
- ✓ wear off
- ✓ rolling resistance

LIV SYSTEMS standard Fixed castor + solid polypropylene wheel Ø100 x W35mm for 125kg Prod ID: 42854

ID 42854: Castor overall height 128 mm | 4 mounting holes with distance 80x60 mm | Wheel with ball bearing and solid polypropylene wheel with hardness 60±5 Shore D | Long floor drive, for acidic environment, low wear off, low rolling resistance

Product information

- Article code 2-666-20K
- SKU 42854
- EAN 3838461428548

Алматы (7273)495-231
Ангарск (3955)60-70-56
Архангельск (8182)63-90-72
Астрахань (8512)99-46-04
Барнаул (3852)73-04-60
Белгород (4722)40-23-64
Благовещенск (4162)22-76-07
Брянск (4832)59-03-52
Владивосток (423)249-28-31
Владикавказ (8672)28-90-48
Владимир (4922)49-43-18
Волгоград (844)278-03-48
Вологда (8172)26-41-59
Воронеж (473)204-51-73
Екатеринбург (343)384-55-89

Иваново (4932)77-34-06
Ижевск (3412)26-03-58
Иркутск (395)279-98-46
Казань (843)206-01-48
Калининград (4012)72-03-81
Калуга (4842)92-23-67
Кемерово (3842)65-04-62
Киров (8332)68-02-04
Коломна (4966)23-41-49
Кострома (4942)77-07-48
Краснодар (861)203-40-90
Красноярск (391)204-63-61
Курск (4712)77-13-04
Курган (3522)50-90-47
Липецк (4742)52-20-81

Россия +7(495)268-04-70

Магнитогорск (3519)55-03-13
Москва (495)268-04-70
Мурманск (8152)59-64-93
Набережные Челны (8552)20-53-41
Нижний Новгород (831)429-08-12
Новокузнецк (3843)20-46-81
Ноябрьск (3496)41-32-12
Новосибирск (383)227-86-73
Омск (3812)21-46-40
Орел (4862)44-53-42
Оренбург (3532)37-68-04
Пенза (8412)22-31-16
Петрозаводск (8142)55-98-37
Псков (8112)59-10-37
Пермь (342)205-81-47

Казахстан +7(7172)727-132

Ростов-на-Дону (863)308-18-15
Рязань (4912)46-61-64
Самара (846)206-03-16
Санкт-Петербург (812)309-46-40
Саратов (845)249-38-78
Севастополь (8692)22-31-93
Саранск (8342)22-96-24
Симферополь (3652)67-13-56
Смоленск (4812)29-41-54
Сочи (862)225-72-31
Ставрополь (8652)20-65-13
Сургут (3462)77-98-35
Сыктывкар (8212)25-95-17
Тамбов (4752)50-40-97
Тверь (4822)63-31-35

Киргизия +996(312)96-26-47

Тольятти (8482)63-91-07
Томск (3822)98-41-53
Тула (4872)33-79-87
Тюмень (3452)66-21-18
Ульяновск (8422)24-23-59
Улан-Удэ (3012)59-97-51
Уфа (347)229-48-12
Хабаровск (4212)92-98-04
Чебоксары (8352)28-53-07
Челябинск (351)202-03-61
Череповец (8202)49-02-64
Чита (3022)38-34-83
Якутск (4112)23-90-97
Ярославль (4852)69-52-93