



Product description

standard Wheel with ball bearing and solid polypropylene wheel with hardness 60±5 Shore D

Wheel diameter x width: 125 x 38 mm

Axle hole: 8,5 mm

Hub length: mm

Approved and tested load capacity

Dynamic 150 kg

Static 180 kg

Temperature range:

Continuous operation: -20 | +60°C

Short (10 min) exposure: /°C

Advantages of this Long floor drive wheel:

- ✓ acidic environment
- ✓ wear off
- ✓ rolling resistance

LIV SYSTEMS standard wheel + solid polypropylene wheel Ø125 x W38mm for 150kg Prod ID: 42783

ID 42783: standard Wheel with ball bearing and solid polypropylene wheel with hardness 60±5 Shore D | Axle hole: 8,5 mm | Hub length: mm | Long floor drive, for acidic environment, low wear off, low rolling resistance

Product information

- Article code 2-681-25K
- SKU 42783
- EAN 3838461427831

Алматы (7273)495-231
Ангарск (3955)60-70-56
Архангельск (8182)63-90-72
Астрахань (8512)99-46-04
Барнаул (3852)73-04-60
Белгород (4722)40-23-64
Благовещенск (4162)22-76-07
Брянск (4832)59-03-52
Владивосток (423)249-28-31
Владикавказ (8672)28-90-48
Владимир (4922)49-43-18
Волгоград (844)278-03-48
Вологда (8172)26-41-59
Воронеж (473)204-51-73
Екатеринбург (343)384-55-89

Иваново (4932)77-34-06
Ижевск (3412)26-03-58
Иркутск (395)279-98-46
Казань (843)206-01-48
Калининград (4012)72-03-81
Калуга (4842)92-23-67
Кемерово (3842)65-04-62
Киров (8332)68-02-04
Коломна (4966)23-41-49
Кострома (4942)77-07-48
Краснодар (861)203-40-90
Красноярск (391)204-63-61
Курск (4712)77-13-04
Курган (3522)50-90-47
Липецк (4742)52-20-81

Россия +7(495)268-04-70

Магнитогорск (3519)55-03-13
Москва (495)268-04-70
Мурманск (8152)59-64-93
Набережные Челны (8552)20-53-41
Нижний Новгород (831)429-08-12
Новокузнецк (3843)20-46-81
Ноябрьск (3496)41-32-12
Новосибирск (383)227-86-73
Омск (3812)21-46-40
Орел (4862)44-53-42
Оренбург (3532)37-68-04
Пенза (8412)22-31-16
Петрозаводск (8142)55-98-37
Псков (8112)59-10-37
Пермь (342)205-81-47

Казахстан +7(7172)727-132

Ростов-на-Дону (863)308-18-15
Рязань (4912)46-61-64
Самара (846)206-03-16
Санкт-Петербург (812)309-46-40
Саратов (845)249-38-78
Севастополь (8692)22-31-93
Саранск (8342)22-96-24
Симферополь (3652)67-13-56
Смоленск (4812)29-41-54
Сочи (862)225-72-31
Ставрополь (8652)20-65-13
Сургут (3462)77-98-35
Сыктывкар (8212)25-95-17
Тамбов (4752)50-40-97
Тверь (4822)63-31-35

Киргизия +996(312)96-26-47

Тольятти (8482)63-91-07
Томск (3822)98-41-53
Тула (4872)33-79-87
Тюмень (3452)66-21-18
Ульяновск (8422)24-23-59
Улан-Удэ (3012)59-97-51
Уфа (347)229-48-12
Хабаровск (4212)92-98-04
Чебоксары (8352)28-53-07
Челябинск (351)202-03-61
Череповец (8202)49-02-64
Чита (3022)38-34-83
Якутск (4112)23-90-97
Ярославль (4852)69-52-93

<https://liv.nt-rt.ru/> || vis@nt-rt.ru



Product description

standard Swivel castor with an overall height of 155 mm

Wheel diameter x width: 125 x 38 mm

Top plate with 4 mounting holes of 9 mm, mounting hole distance 80x60 mm and top plate outer dimensions: 105x85 mm

Wheel with ball bearing and solid polypropylene wheel with hardness 60±5 Shore D.

Approved and tested load capacity

Dynamic 150 kg

Static 180 kg

Temperature range:

Continuous operation: -20 | +60°C

Short (10 min) exposure: /°C

Advantages of this Long floor drive Swivel castor:

- ✓ acidic environment
- ✓ wear off
- ✓ rolling resistance

LIV SYSTEMS standard Swivel castor + solid polypropylene wheel Ø125 x W38mm for 150kg Prod ID: 42825

ID 42825: Castor overall height 155 mm | 4 mounting holes with distance 80x60 mm | Wheel with ball bearing and solid polypropylene wheel with hardness 60±5 Shore D | Long floor drive, for acidic environment, low wear off, low rolling resistance

Product information

- Article code 2-662-25K
- SKU 42825
- EAN 3838461428258



Product description

standard Wheel with plain bearing and solid polypropylene wheel with hardness 60±5 Shore D

Wheel diameter x width: 125 x 38 mm

Axle hole: 12 mm

Hub length: mm

Approved and tested load capacity

Dynamic 150 kg

Static 180 kg

Temperature range:

Continuous operation: -20 | +60°C

Short (10 min) exposure: /°C

Advantages of this Long floor drive wheel:

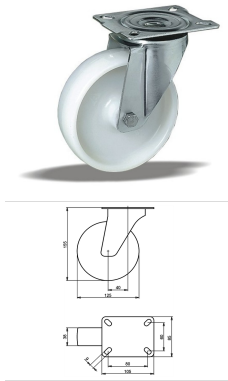
- ✓ acidic environment
- ✓ wear off
- ✓ rolling resistance

LIV SYSTEMS standard wheel + solid polypropylene wheel Ø125 x W38mm for 150kg Prod ID: 66723

ID 66723: standard Wheel with plain bearing and solid polypropylene wheel with hardness 60±5 Shore D | Axle hole: 12 mm | Hub length: mm | Long floor drive, for acidic environment, low wear off, low rolling resistance

Product information

- Article code 2-762 ISO
- SKU 66723
- EAN 3838461667237



Product description

standard Swivel castor with an overall height of 155 mm

Wheel diameter x width: 125 x 38 mm

Top plate with 4 mounting holes of 9 mm, mounting hole distance 80x60 mm and top plate outer dimensions: 105x85 mm

Wheel with plain bearing and solid polypropylene wheel with hardness 60±5 Shore D.

Approved and tested load capacity

Dynamic 150 kg

Static 180 kg

Temperature range:

Continuous operation: -20 | +60°C

Short (10 min) exposure: /°C

Advantages of this Long floor drive Swivel castor:

- ✓ acidic environment
- ✓ wear off
- ✓ rolling resistance

LIV SYSTEMS standard Swivel castor + solid polypropylene wheel Ø125 x W38mm for 150kg Prod ID: 66854

ID 66854: Castor overall height 155 mm | 4 mounting holes with distance 80x60 mm | Wheel with plain bearing and solid polypropylene wheel with hardness 60±5 Shore D | Long floor drive, for acidic environment, low wear off, low rolling resistance

Product information

- Article code 2-672 ISO
- SKU 66854
- EAN 3838461668548

Specifications

The result of our quality is maximum performance!

[Close](#)

[Close](#)



Product description

standard Wheel with roller bearing and solid polypropylene wheel with hardness 60±5 Shore D

Wheel diameter x width: 125 x 38 mm

Axle hole: 12 mm

Hub length: mm

Approved and tested load capacity

Dynamic 150 kg

Static 180 kg

Temperature range:

Continuous operation: -20 | +60°C

Short (10 min) exposure: /°C

Advantages of this Long floor drive wheel:

- ✓ acidic environment
- ✓ wear off
- ✓ rolling resistance

LIV SYSTEMS standard wheel + solid polypropylene wheel Ø125 x W38mm for 150kg Prod ID: 58477

ID 58477: standard Wheel with roller bearing and solid polypropylene wheel with hardness 60±5 Shore D | Axle hole: 12 mm | Hub length: mm | Long floor drive, for acidic environment, low wear off, low rolling resistance

Product information

- Article code 2-752 ISO
- SKU 58477
- EAN 3838461584770



Product description

standard Wheel with plain bearing and solid polypropylene wheel with hardness 60±5 Shore D

Wheel diameter x width: 125 x 38 mm

Axle hole: 12 mm

Hub length: mm

Approved and tested load capacity

Dynamic 150 kg

Static 180 kg

Temperature range:

Continuous operation: -20 | +60°C

Short (10 min) exposure: /°C

Advantages of this Long floor drive wheel:

- ✓ acidic environment
- ✓ wear off
- ✓ rolling resistance

LIV SYSTEMS standard wheel + solid polypropylene wheel Ø125 x W38mm for 150kg Prod ID: 59217

ID 59217: standard Wheel with plain bearing and solid polypropylene wheel with hardness 60±5 Shore D | Axle hole: 12 mm | Hub length: mm | Long floor drive, for acidic environment, low wear off, low rolling resistance

Product information

- Article code 2-762 ISO
- SKU 59217
- EAN 3838461592171



Product description

standard Wheel with roller bearing and solid polypropylene wheel with hardness 60±5 Shore D

Wheel diameter x width: 125 x 38 mm

Axle hole: 12 mm

Hub length: mm

Approved and tested load capacity

Dynamic 150 kg

Static 180 kg

Temperature range:

Continuous operation: -20 | +60°C

Short (10 min) exposure: /°C

Advantages of this Long floor drive wheel:

- ✓ acidic environment
- ✓ wear off
- ✓ rolling resistance

LIV SYSTEMS standard wheel + solid polypropylene wheel Ø125 x W38mm for 150kg Prod ID: 66719

ID 66719: standard Wheel with roller bearing and solid polypropylene wheel with hardness 60±5 Shore D | Axle hole: 12 mm | Hub length: mm | Long floor drive, for acidic environment, low wear off, low rolling resistance

Product information

- Article code 2-752 ISO
- SKU 66719
- EAN 3838461667190



Product description

standard Wheel with ball bearing and solid polypropylene wheel with hardness 60±5 Shore D

Wheel diameter x width: 125 x 38 mm

Axle hole: 12 mm

Hub length: mm

Approved and tested load capacity

Dynamic 150 kg

Static 180 kg

Temperature range:

Continuous operation: -20 | +60°C

Short (10 min) exposure: /°C

Advantages of this Long floor drive wheel:

- ✓ acidic environment
- ✓ wear off
- ✓ rolling resistance

LIV SYSTEMS standard wheel + solid polypropylene wheel Ø125 x W38mm for 150kg Prod ID: 42773

ID 42773: standard Wheel with ball bearing and solid polypropylene wheel with hardness 60±5 Shore D | Axle hole: 12 mm | Hub length: mm | Long floor drive, for acidic environment, low wear off, low rolling resistance

Product information

- Article code 2-682-25K
- SKU 42773
- EAN 3838461427732



Product description

standard Wheel with ball bearing and solid polypropylene wheel with hardness 60±5 Shore D

Wheel diameter x width: 125 x 38 mm

Axle hole: 12 mm

Hub length: mm

Approved and tested load capacity

Dynamic 150 kg

Static 180 kg

Temperature range:

Continuous operation: -20 | +60°C

Short (10 min) exposure: /°C

Advantages of this Long floor drive wheel:

- ✓ acidic environment
- ✓ wear off
- ✓ rolling resistance

LIV SYSTEMS standard wheel + solid polypropylene wheel Ø125 x W38mm for 150kg Prod ID: 42765

ID 42765: standard Wheel with ball bearing and solid polypropylene wheel with hardness 60±5 Shore D | Axle hole: 12 mm | Hub length: mm | Long floor drive, for acidic environment, low wear off, low rolling resistance

Product information

- Article code 2-682-25K
- SKU 42765
- EAN 3838461427657



Product description

standard Wheel with ball bearing and solid polypropylene wheel with hardness 60±5 Shore D

Wheel diameter x width: 125 x 38 mm

Axle hole: 8,5 mm

Hub length: mm

Approved and tested load capacity

Dynamic 150 kg

Static 180 kg

Temperature range:

Continous operation: -20 | +60°C

Short (10 min) exposure: /°C

Advantages of this Long floor drive wheel:

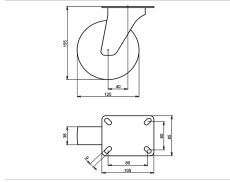
- ✓ acidic environment
- ✓ wear off
- ✓ rolling resistance

LIV SYSTEMS standard wheel + solid polypropylene wheel Ø125 x W38mm for 150kg Prod ID: 42784

ID 42784: standard Wheel with ball bearing and solid polypropylene wheel with hardness 60±5 Shore D | Axle hole: 8,5 mm | Hub length: mm | Long floor drive, for acidic environment, low wear off, low rolling resistance

Product information

- Article code 2-681-25K
- SKU 42784
- EAN 3838461427848



Product description

standard Swivel castor with an overall height of 155 mm

Wheel diameter x width: 125 x 38 mm

Top plate with 4 mounting holes of 9 mm, mounting hole distance 80x60 mm and top plate outer dimensions: 105x85 mm

Wheel with plain bearing and solid polypropylene wheel with hardness 60±5 Shore D.

Approved and tested load capacity

Dynamic 150 kg

Static 180 kg

Temperature range:

Continuous operation: -20 | +60°C

Short (10 min) exposure: /°C

Advantages of this Long floor drive Swivel castor:

- ✓ acidic environment
- ✓ wear off
- ✓ rolling resistance

LIV SYSTEMS standard Swivel castor + solid polypropylene wheel Ø125 x W38mm for 150kg Prod ID: 60810

ID 60810: Castor overall height 155 mm | 4 mounting holes with distance 80x60 mm | Wheel with plain bearing and solid polypropylene wheel with hardness 60±5 Shore D | Long floor drive, for acidic environment, low wear off, low rolling resistance

Product information

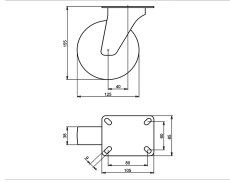
- Article code 2-672 ISO
- SKU 60810
- EAN 3838461608100

Specifications

The result of our quality is maximum performance!

[Close](#)

[Close](#)



Product description

standard Swivel castor with an overall height of 155 mm

Wheel diameter x width: 125 x 38 mm

Top plate with 4 mounting holes of 9 mm, mounting hole distance 80x60 mm and top plate outer dimensions: 105x85 mm

Wheel with roller bearing and solid polypropylene wheel with hardness 60±5 Shore D.

Approved and tested load capacity

Dynamic 150 kg

Static 180 kg

Temperature range:

Continuous operation: -20 | +60°C

Short (10 min) exposure: /°C

Advantages of this Long floor drive Swivel castor:

- ✓ acidic environment
- ✓ wear off
- ✓ rolling resistance

LIV SYSTEMS standard Swivel castor + solid polypropylene wheel Ø125 x W38mm for 150kg Prod ID: 60801

ID 60801: Castor overall height 155 mm | 4 mounting holes with distance 80x60 mm | Wheel with roller bearing and solid polypropylene wheel with hardness 60±5 Shore D |

Long floor drive, for acidic environment, low wear off, low rolling resistance

Product information

- Article code 2-662 ISO
- SKU 60801
- EAN 3838461608018

Specifications

The result of our quality is maximum performance!

[Close](#)

[Close](#)



Product description

standard Swivel castor with an overall height of 155 mm

Wheel diameter x width: 125 x 38 mm

Top plate with 4 mounting holes of 9 mm, mounting hole distance 80x60 mm and top plate outer dimensions: 105x85 mm

Wheel with ball bearing and solid polypropylene wheel with hardness 60±5 Shore D.

Approved and tested load capacity

Dynamic 150 kg

Static 180 kg

Temperature range:

Continuous operation: -20 | +60°C

Short (10 min) exposure: /°C

Advantages of this Long floor drive Swivel castor:

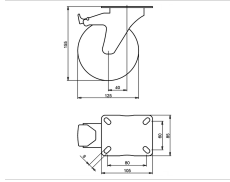
- ✓ acidic environment
- ✓ wear off
- ✓ rolling resistance

LIV SYSTEMS standard Swivel castor + solid polypropylene wheel Ø125 x W38mm for 150kg Prod ID: 42833

ID 42833: Castor overall height 155 mm | 4 mounting holes with distance 80x60 mm | Wheel with ball bearing and solid polypropylene wheel with hardness 60±5 Shore D | Long floor drive, for acidic environment, low wear off, low rolling resistance

Product information

- Article code 2-662-25K
- SKU 42833
- EAN 3838461428333



Product description

standard Swivel castor with brake with an overall height of 155 mm
Wheel diameter x width: 125 x 38 mm
Top plate with 4 mounting holes of 9 mm, mounting hole distance 80x60 mm and top plate outer dimensions: 105x85 mm
Wheel with plain bearing and solid polypropylene wheel with hardness 60±5 Shore D
the double brake system, brakes the turning of the wheel and the swivel rotation.

Approved and tested load capacity

Dynamic 150 kg
Static 180 kg

Temperature range:

Continuous operation: -20 | +60°C
Short (10 min) exposure: /°C

Advantages of this Long floor drive Swivel castor with brake:

- ✓ acidic environment
- ✓ wear off
- ✓ rolling resistance

LIV SYSTEMS standard Swivel castor with brake + solid polypropylene wheel Ø125 x W38mm for 150kg Prod ID: 30563

ID 30563: Castor overall height 155 mm | 4 mounting holes with distance 80x60 mm | Wheel with plain bearing and solid polypropylene wheel with hardness 60±5 Shore D | The double brake system, brakes the turning of the wheel and the swivel rotation. | Lon

Product information

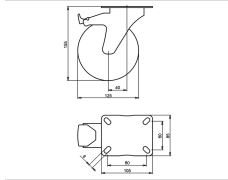
- Article code 2-684 A
- SKU 30563
- EAN 3838461305634

Specifications

The result of our quality is maximum performance!

[Close](#)

[Close](#)



Product description

standard Swivel castor with brake with an overall height of 155 mm
Wheel diameter x width: 125 x 38 mm
Top plate with 4 mounting holes of 9 mm, mounting hole distance 80x60 mm and top plate outer dimensions: 105x85 mm
Wheel with roller bearing and solid polypropylene wheel with hardness 60±5 Shore D
the double brake system, brakes the turning of the wheel and the swivel rotation.

Approved and tested load capacity

Dynamic 150 kg
Static 180 kg

Temperature range:

Continuous operation: -20 | +60°C
Short (10 min) exposure: /°C

Advantages of this Long floor drive Swivel castor with brake:

- ✓ acidic environment
- ✓ wear off
- ✓ rolling resistance

LIV SYSTEMS standard Swivel castor with brake + solid polypropylene wheel Ø125 x W38mm for 150kg Prod ID: 30543

ID 30543: Castor overall height 155 mm | 4 mounting holes with distance 80x60 mm | Wheel with roller bearing and solid polypropylene wheel with hardness 60±5 Shore D | The double brake system, brakes the turning of the wheel and the swivel rotation. | Lo

Product information

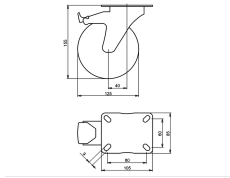
- Article code 2-723 A
- SKU 30543
- EAN 3838461305436

Specifications

The result of our quality is maximum performance!

[Close](#)

[Close](#)



Product description

standard Swivel castor with brake with an overall height of 155 mm
 Wheel diameter x width: 125 x 35 mm
 Top plate with 4 mounting holes of 9 mm, mounting hole distance 80x60 mm and top plate outer dimensions: 105x85 mm
 Wheel with ball bearing and solid polyamide wheel with hardness 60±5 Shore D
 the double brake system, brakes the turning of the wheel and the swivel rotation.

Approved and tested load capacity

Dynamic 250 kg
 Static 310 kg

Temperature range:

Continuous operation: -20 | +60°C
 Short (10 min) exposure: /°C

Advantages of this Long floor drive Swivel castor with brake:

- ✓ acidic environment
- ✓ wear off
- ✓ rolling resistance

LIV SYSTEMS standard Swivel castor with brake + solid polyamide wheel Ø125 x W35mm for 250kg Prod ID: 42844

ID 42844: Castor overall height 155 mm | 4 mounting holes with distance 80x60 mm | Wheel with ball bearing and solid polyamide wheel with hardness 60±5 Shore D | The double brake system, brakes the turning of the wheel and the swivel rotation. | Long flo

Product information

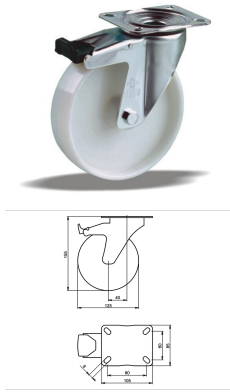
- Article code 2-723-25K
- SKU 42844
- EAN 3838461428449

Specifications

The result of our quality is maximum performance!

[Close](#)

[Close](#)



Product description

standard Swivel castor with brake with an overall height of 155 mm
Wheel diameter x width: 125 x 38 mm
Top plate with 4 mounting holes of 9 mm, mounting hole distance 80x60 mm and top plate outer dimensions: 105x85 mm
Wheel with plain bearing and solid polypropylene wheel with hardness 60±5 Shore D
the double brake system, brakes the turning of the wheel and the swivel rotation.

Approved and tested load capacity

Dynamic 150 kg
Static 180 kg

Temperature range:

Continuous operation: -20 | +60°C
Short (10 min) exposure: /°C

Advantages of this Long floor drive Swivel castor with brake:

- ✓ acidic environment
- ✓ wear off
- ✓ rolling resistance

LIV SYSTEMS standard Swivel castor with brake + solid polypropylene wheel Ø125 x W38mm for 150kg Prod ID: 30663

ID 30663: Castor overall height 155 mm | 4 mounting holes with distance 80x60 mm | Wheel with plain bearing and solid polypropylene wheel with hardness 60±5 Shore D | The double brake system, brakes the turning of the wheel and the swivel rotation. | Lon

Product information

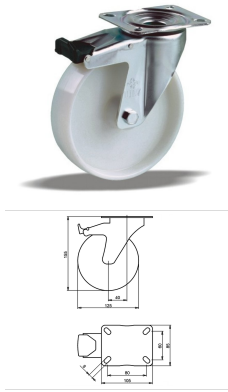
- Article code 2-684 A
- SKU 30663
- EAN 3838461306631

Specifications

The result of our quality is maximum performance!

[Close](#)

[Close](#)



Product description

standard Swivel castor with brake with an overall height of 155 mm
 Wheel diameter x width: 125 x 38 mm
 Top plate with 4 mounting holes of 9 mm, mounting hole distance 80x60 mm and top plate outer dimensions: 105x85 mm
 Wheel with roller bearing and solid polypropylene wheel with hardness 60±5 Shore D
 the double brake system, brakes the turning of the wheel and the swivel rotation.

Approved and tested load capacity

Dynamic 150 kg
 Static 180 kg

Temperature range:

Continuous operation: -20 | +60°C
 Short (10 min) exposure: /°C

Advantages of this Long floor drive Swivel castor with brake:

- ✓ acidic environment
- ✓ wear off
- ✓ rolling resistance

LIV SYSTEMS standard Swivel castor with brake + solid polypropylene wheel Ø125 x W38mm for 150kg Prod ID: 30655

ID 30655: Castor overall height 155 mm | 4 mounting holes with distance 80x60 mm | Wheel with roller bearing and solid polypropylene wheel with hardness 60±5 Shore D | The double brake system, brakes the turning of the wheel and the swivel rotation. | Lo

Product information

- Article code 2-723 A
- SKU 30655
- EAN 3838461306556

Specifications

The result of our quality is maximum performance!

[Close](#)

[Close](#)



Product description

standard Swivel castor with brake with an overall height of 155 mm

Wheel diameter x width: 125 x 35 mm

Top plate with 4 mounting holes of 9 mm, mounting hole distance 80x60 mm and top plate outer dimensions: 105x85 mm

Wheel with ball bearing and solid polypropylene wheel with hardness 60±5 Shore D
the double brake system, brakes the turning of the wheel and the swivel rotation.

Approved and tested load capacity

Dynamic 150 kg

Static 180 kg

Temperature range:

Continuous operation: -20 | +60°C

Short (10 min) exposure: /°C

Advantages of this Long floor drive Swivel castor with brake:

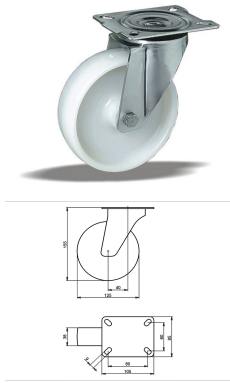
- ✓ acidic environment
- ✓ wear off
- ✓ rolling resistance

LIV SYSTEMS standard Swivel castor with brake + solid polypropylene wheel Ø125 x W35mm for 150kg Prod ID: 42843

ID 42843: Castor overall height 155 mm | 4 mounting holes with distance 80x60 mm | Wheel with ball bearing and solid polypropylene wheel with hardness 60±5 Shore D | The double brake system, brakes the turning of the wheel and the swivel rotation. | Long

Product information

- 
- Article code 2-723-25K
 - SKU 42843
 - EAN 3838461428432



Product description

standard Swivel castor with an overall height of 155 mm

Wheel diameter x width: 125 x 38 mm

Top plate with 4 mounting holes of 9 mm, mounting hole distance 80x60 mm and top plate outer dimensions: 105x85 mm

Wheel with roller bearing and solid polypropylene wheel with hardness 60±5 Shore D.

Approved and tested load capacity

Dynamic 150 kg

Static 180 kg

Temperature range:

Continuous operation: -20 | +60°C

Short (10 min) exposure: /°C

Advantages of this Long floor drive Swivel castor:

- ✓ acidic environment
- ✓ wear off
- ✓ rolling resistance

LIV SYSTEMS standard Swivel castor + solid polypropylene wheel Ø125 x W38mm for 150kg Prod ID: 66738

ID 66738: Castor overall height 155 mm | 4 mounting holes with distance 80x60 mm | Wheel with roller bearing and solid polypropylene wheel with hardness 60±5 Shore D | Long floor drive, for acidic environment, low wear off, low rolling resistance

Product information

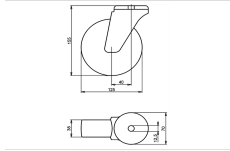
- Article code 2-662 ISO
- SKU 66738
- EAN 3838461667381

Specifications

The result of our quality is maximum performance!

[Close](#)

[Close](#)



Product description

standard Swivel castor with an overall height of 155 mm

Wheel diameter x width: 125 x 38 mm

Top plate with 4 mounting holes of 12,5 mm, mounting hole distance #\$\$ mm and top plate outer dimensions: 70 mm

Wheel with plain bearing and solid polypropylene wheel with hardness 60±5 Shore D.

Approved and tested load capacity

Dynamic 150 kg

Static 180 kg

Temperature range:

Continuous operation: -20 | +60°C

Short (10 min) exposure: /°C

Advantages of this Long floor drive Swivel castor:

- ✓ acidic environment
- ✓ wear off
- ✓ rolling resistance

LIV SYSTEMS standard Swivel castor + solid polypropylene wheel Ø125 x W38mm for 150kg Prod ID: 34285

ID 34285: Castor overall height 155 mm | 4 mounting holes with distance #\$\$ mm | Wheel with plain bearing and solid polypropylene wheel with hardness 60±5 Shore D | Long floor drive, for acidic environment, low wear off, low rolling resistance

Product information

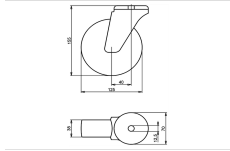
- Article code 2-767 L12
- SKU 34285
- EAN 3838461342851

Specifications

The result of our quality is maximum performance!

[Close](#)

[Close](#)



Product description

standard Swivel castor with an overall height of 155 mm

Wheel diameter x width: 125 x 38 mm

Top plate with 4 mounting holes of 12,5 mm, mounting hole distance #\$\$ mm and top plate outer dimensions: 70 mm

Wheel with roller bearing and solid polypropylene wheel with hardness 60±5 Shore D.

Approved and tested load capacity

Dynamic 150 kg

Static 180 kg

Temperature range:

Continuous operation: -20 | +60°C

Short (10 min) exposure: /°C

Advantages of this Long floor drive Swivel castor:

- ✓ acidic environment
- ✓ wear off
- ✓ rolling resistance

LIV SYSTEMS standard Swivel castor + solid polypropylene wheel Ø125 x W38mm for 150kg Prod ID: 34283

ID 34283: Castor overall height 155 mm | 4 mounting holes with distance #\$\$ mm | Wheel with roller bearing and solid polypropylene wheel with hardness 60±5 Shore D | Long floor drive, for acidic environment, low wear off, low rolling resistance

Product information

- Article code 2-757 L12
- SKU 34283
- EAN 3838461342837

Specifications

The result of our quality is maximum performance!

[Close](#)

[Close](#)



Product description

standard Swivel castor with an overall height of 155 mm

Wheel diameter x width: 125 x 38 mm

Top plate with 4 mounting holes of 12,5 mm, mounting hole distance #\$\$ mm and top plate outer dimensions: 70 mm

Wheel with ball bearing and solid polypropylene wheel with hardness 60±5 Shore D.

Approved and tested load capacity

Dynamic 150 kg

Static 180 kg

Temperature range:

Continuous operation: -20 | +60°C

Short (10 min) exposure: /°C

Advantages of this Long floor drive Swivel castor:

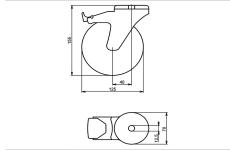
- ✓ acidic environment
- ✓ wear off
- ✓ rolling resistance

LIV SYSTEMS standard Swivel castor + solid polypropylene wheel Ø125 x W38mm for 150kg Prod ID: 42913

ID 42913: Castor overall height 155 mm | 4 mounting holes with distance #\$\$ mm | Wheel with ball bearing and solid polypropylene wheel with hardness 60±5 Shore D | Long floor drive, for acidic environment, low wear off, low rolling resistance

Product information

- Article code 2-757-25K
- SKU 42913
- EAN 3838461429132



Product description

standard Swivel castor with brake with an overall height of 155 mm
 Wheel diameter x width: 125 x 38 mm
 Top plate with 4 mounting holes of 12,5 mm, mounting hole distance #\$\$ mm and top plate outer dimensions: 70 mm
 Wheel with plain bearing and solid polypropylene wheel with hardness 60±5 Shore D
 the double brake system, brakes the turning of the wheel and the swivel rotation.

Approved and tested load capacity

Dynamic 150 kg
 Static 180 kg

Temperature range:

Continious operation: -20 | +60°C
 Short (10 min) exposure: /°C

Advantages of this Long floor drive Swivel castor with brake:

- ✓ acidic environment
- ✓ wear off
- ✓ rolling resistance

LIV SYSTEMS standard Swivel castor with brake + solid polypropylene wheel Ø125 x W38mm for 150kg Prod ID: 34545

ID 34545: Castor overall height 155 mm | 4 mounting holes with distance #\$\$ mm | Wheel with plain bearing and solid polypropylene wheel with hardness 60±5 Shore D | The double brake system, brakes the turning of the wheel and the swivel rotation. | Long

Product information

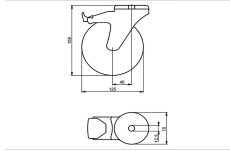
- Article code 2-795 L12
- SKU 34545
- EAN 3838461345456

Specifications

The result of our quality is maximum performance!

[Close](#)

[Close](#)



Product description

standard Swivel castor with brake with an overall height of 155 mm
 Wheel diameter x width: 125 x 38 mm
 Top plate with 4 mounting holes of 12,5 mm, mounting hole distance #\$\$ mm and top plate outer dimensions: 70 mm
 Wheel with roller bearing and solid polypropylene wheel with hardness 60±5 Shore D
 the double brake system, brakes the turning of the wheel and the swivel rotation.

Approved and tested load capacity

Dynamic 150 kg
 Static 180 kg

Temperature range:

Continuous operation: -20 | +60°C
 Short (10 min) exposure: /°C

Advantages of this Long floor drive Swivel castor with brake:

- ✓ acidic environment
- ✓ wear off
- ✓ rolling resistance

LIV SYSTEMS standard Swivel castor with brake + solid polypropylene wheel Ø125 x W38mm for 150kg Prod ID: 34544

ID 34544: Castor overall height 155 mm | 4 mounting holes with distance #\$\$ mm | Wheel with roller bearing and solid polypropylene wheel with hardness 60±5 Shore D | The double brake system, brakes the turning of the wheel and the swivel rotation. | Long

Product information

- Article code 2-790 L12
- SKU 34544
- EAN 3838461345449

Specifications

The result of our quality is maximum performance!

[Close](#)

[Close](#)



Product description

standard Swivel castor with brake with an overall height of 155 mm

Wheel diameter x width: 125 x 38 mm

Top plate with 4 mounting holes of 12,5 mm, mounting hole distance #\$\$ mm and top plate outer dimensions: 70 mm

Wheel with ball bearing and solid polypropylene wheel with hardness 60±5 Shore D
the double brake system, brakes the turning of the wheel and the swivel rotation.

Approved and tested load capacity

Dynamic 150 kg

Static 180 kg

Temperature range:

Continuous operation: -20 | +60°C

Short (10 min) exposure: /°C

Advantages of this Long floor drive Swivel castor with brake:

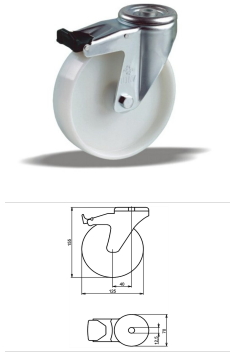
- ✓ acidic environment
- ✓ wear off
- ✓ rolling resistance

LIV SYSTEMS standard Swivel castor with brake + solid polypropylene wheel Ø125 x W38mm for 150kg Prod ID: 42924

ID 42924: Castor overall height 155 mm | 4 mounting holes with distance #\$\$ mm | Wheel with ball bearing and solid polypropylene wheel with hardness 60±5 Shore D | The double brake system, brakes the turning of the wheel and the swivel rotation. | Long f

Product information

- 
- Article code 2-790-25K
 - SKU 42924
 - EAN 3838461429248



Product description

standard Swivel castor with brake with an overall height of 155 mm
Wheel diameter x width: 125 x 38 mm
Top plate with 4 mounting holes of 12,5 mm, mounting hole distance #\$\$ mm and top plate outer dimensions: 70 mm
Wheel with plain bearing and solid polypropylene wheel with hardness 60±5 Shore D
the double brake system, brakes the turning of the wheel and the swivel rotation.

Approved and tested load capacity

Dynamic 150 kg
Static 180 kg

Temperature range:

Continious operation: -20 | +60°C
Short (10 min) exposure: /°C

Advantages of this Long floor drive Swivel castor with brake:

- ✓ acidic environment
- ✓ wear off
- ✓ rolling resistance

LIV SYSTEMS standard Swivel castor with brake + solid polypropylene wheel Ø125 x W38mm for 150kg Prod ID: 34595

ID 34595: Castor overall height 155 mm | 4 mounting holes with distance #\$\$ mm | Wheel with plain bearing and solid polypropylene wheel with hardness 60±5 Shore D | The double brake system, brakes the turning of the wheel and the swivel rotation. | Long

Product information

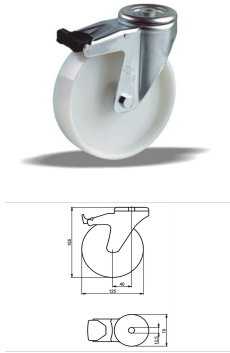
- Article code 2-795 L12
- SKU 34595
- EAN 3838461345951

Specifications

The result of our quality is maximum performance!

[Close](#)

[Close](#)



Product description

standard Swivel castor with brake with an overall height of 155 mm
 Wheel diameter x width: 125 x 38 mm
 Top plate with 4 mounting holes of 12,5 mm, mounting hole distance #\$\$ mm and top plate outer dimensions: 70 mm
 Wheel with roller bearing and solid polypropylene wheel with hardness 60±5 Shore D
 the double brake system, brakes the turning of the wheel and the swivel rotation.

Approved and tested load capacity

Dynamic 150 kg
 Static 180 kg

Temperature range:

Continuous operation: -20 | +60°C
 Short (10 min) exposure: /°C

Advantages of this Long floor drive Swivel castor with brake:

- ✓ acidic environment
- ✓ wear off
- ✓ rolling resistance

LIV SYSTEMS standard Swivel castor with brake + solid polypropylene wheel Ø125 x W38mm for 150kg Prod ID: 34594

ID 34594: Castor overall height 155 mm | 4 mounting holes with distance #\$\$ mm | Wheel with roller bearing and solid polypropylene wheel with hardness 60±5 Shore D | The double brake system, brakes the turning of the wheel and the swivel rotation. | Long

Product information

- Article code 2-790 L12
- SKU 34594
- EAN 3838461345944

Specifications

The result of our quality is maximum performance!

[Close](#)

[Close](#)



Product description

standard Swivel castor with brake with an overall height of 155 mm

Wheel diameter x width: 125 x 38 mm

Top plate with 4 mounting holes of 12,5 mm, mounting hole distance #\$\$% mm and top plate outer dimensions: 70 mm

Wheel with ball bearing and solid polypropylene wheel with hardness 60±5 Shore D
the double brake system, brakes the turning of the wheel and the swivel rotation.

Approved and tested load capacity

Dynamic 150 kg

Static 180 kg

Temperature range:

Continuous operation: -20 | +60°C

Short (10 min) exposure: /°C

Advantages of this Long floor drive Swivel castor with brake:

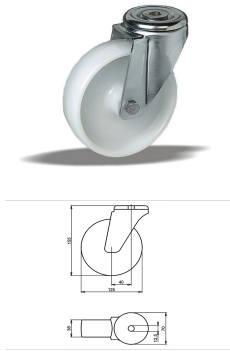
- ✓ acidic environment
- ✓ wear off
- ✓ rolling resistance

LIV SYSTEMS standard Swivel castor with brake + solid polypropylene wheel Ø125 x W38mm for 150kg Prod ID: 42923

ID 42923: Castor overall height 155 mm | 4 mounting holes with distance #\$\$% mm | Wheel with ball bearing and solid polypropylene wheel with hardness 60±5 Shore D | The double brake system, brakes the turning of the wheel and the swivel rotation. | Long f

Product information

- 
- Article code 2-790-25K
 - SKU 42923
 - EAN 3838461429231



Product description

standard Swivel castor with an overall height of 155 mm

Wheel diameter x width: 125 x 38 mm

Top plate with 4 mounting holes of 12,5 mm, mounting hole distance #\$\$ mm and top plate outer dimensions: 70 mm

Wheel with plain bearing and solid polypropylene wheel with hardness 60±5 Shore D.

Approved and tested load capacity

Dynamic 150 kg

Static 180 kg

Temperature range:

Continuous operation: -20 | +60°C

Short (10 min) exposure: /°C

Advantages of this Long floor drive Swivel castor:

- ✓ acidic environment
- ✓ wear off
- ✓ rolling resistance

LIV SYSTEMS standard Swivel castor + solid polypropylene wheel Ø125 x W38mm for 150kg Prod ID: 34344

ID 34344: Castor overall height 155 mm | 4 mounting holes with distance #\$\$ mm | Wheel with plain bearing and solid polypropylene wheel with hardness 60±5 Shore D | Long floor drive, for acidic environment, low wear off, low rolling resistance

Product information

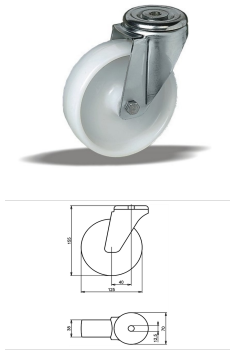
- Article code 2-767 L12
- SKU 34344
- EAN 3838461343445

Specifications

The result of our quality is maximum performance!

[Close](#)

[Close](#)



Product description

standard Swivel castor with an overall height of 155 mm

Wheel diameter x width: 125 x 38 mm

Top plate with 4 mounting holes of 12,5 mm, mounting hole distance #\$\$ mm and top plate outer dimensions: 70 mm

Wheel with roller bearing and solid polypropylene wheel with hardness 60±5 Shore D.

Approved and tested load capacity

Dynamic 150 kg

Static 180 kg

Temperature range:

Continuous operation: -20 | +60°C

Short (10 min) exposure: /°C

Advantages of this Long floor drive Swivel castor:

- ✓ acidic environment
- ✓ wear off
- ✓ rolling resistance

LIV SYSTEMS standard Swivel castor + solid polypropylene wheel Ø125 x W38mm for 150kg Prod ID: 34343

ID 34343: Castor overall height 155 mm | 4 mounting holes with distance #\$\$ mm | Wheel with roller bearing and solid polypropylene wheel with hardness 60±5 Shore D | Long floor drive, for acidic environment, low wear off, low rolling resistance

Product information

- Article code 2-757 L12
- SKU 34343
- EAN 3838461343438

Specifications

The result of our quality is maximum performance!

[Close](#)

[Close](#)



Product description

standard Swivel castor with an overall height of 155 mm

Wheel diameter x width: 125 x 38 mm

Top plate with 4 mounting holes of 12,5 mm, mounting hole distance #\$\$ mm and top plate outer dimensions: 70 mm

Wheel with ball bearing and solid polypropylene wheel with hardness 60±5 Shore D.

Approved and tested load capacity

Dynamic 150 kg

Static 180 kg

Temperature range:

Continuous operation: -20 | +60°C

Short (10 min) exposure: /°C

Advantages of this Long floor drive Swivel castor:

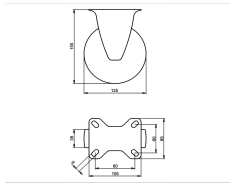
- ✓ acidic environment
- ✓ wear off
- ✓ rolling resistance

LIV SYSTEMS standard Swivel castor + solid polypropylene wheel Ø125 x W38mm for 150kg Prod ID: 42905

ID 42905: Castor overall height 155 mm | 4 mounting holes with distance #\$\$ mm | Wheel with ball bearing and solid polypropylene wheel with hardness 60±5 Shore D | Long floor drive, for acidic environment, low wear off, low rolling resistance

Product information

- Article code 2-757-25K
- SKU 42905
- EAN 3838461429057



Product description

standard Fixed castor with an overall height of 155 mm

Wheel diameter x width: 125 x 38 mm

Top plate with 4 mounting holes of 9 mm, mounting hole distance 80x60 mm and top plate outer dimensions: 105x85 mm

Wheel with plain bearing and solid polypropylene wheel with hardness 60±5 Shore D.

Approved and tested load capacity

Dynamic 150 kg

Static 180 kg

Temperature range:

Continuous operation: -20 | +60°C

Short (10 min) exposure: /°C

Advantages of this Long floor drive Fixed castor:

- ✓ acidic environment
- ✓ wear off
- ✓ rolling resistance

LIV SYSTEMS standard Fixed castor + solid polypropylene wheel Ø125 x W38mm for 150kg Prod ID: 60815

ID 60815: Castor overall height 155 mm | 4 mounting holes with distance 80x60 mm | Wheel with plain bearing and solid polypropylene wheel with hardness 60±5 Shore D | Long floor drive, for acidic environment, low wear off, low rolling resistance

Product information

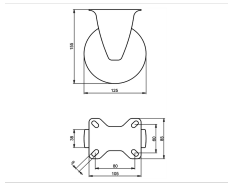
- Article code 2-677 ISO
- SKU 60815
- EAN 3838461608155

Specifications

The result of our quality is maximum performance!

[Close](#)

[Close](#)



Product description

standard Fixed castor with an overall height of 155 mm

Wheel diameter x width: 125 x 38 mm

Top plate with 4 mounting holes of 9 mm, mounting hole distance 80x60 mm and top plate outer dimensions: 105x85 mm

Wheel with roller bearing and solid polypropylene wheel with hardness 60±5 Shore D.

Approved and tested load capacity

Dynamic 150 kg

Static 180 kg

Temperature range:

Continuous operation: -20 | +60°C

Short (10 min) exposure: /°C

Advantages of this Long floor drive Fixed castor:

- ✓ acidic environment
- ✓ wear off
- ✓ rolling resistance

LIV SYSTEMS standard Fixed castor + solid polypropylene wheel Ø125 x W38mm for 150kg Prod ID: 60805

ID 60805: Castor overall height 155 mm | 4 mounting holes with distance 80x60 mm | Wheel with roller bearing and solid polypropylene wheel with hardness 60±5 Shore D | Long floor drive, for acidic environment, low wear off, low rolling resistance

Product information

- Article code 2-667 ISO
- SKU 60805
- EAN 3838461608056

Specifications

The result of our quality is maximum performance!

[Close](#)

[Close](#)



Product description

standard Fixed castor with an overall height of 155 mm

Wheel diameter x width: 125 x 38 mm

Top plate with 4 mounting holes of 9 mm, mounting hole distance 80x60 mm and top plate outer dimensions: 105x85 mm

Wheel with ball bearing and solid polypropylene wheel with hardness 60±5 Shore D.

Approved and tested load capacity

Dynamic 150 kg

Static 180 kg

Temperature range:

Continuous operation: -20 | +60°C

Short (10 min) exposure: /°C

Advantages of this Long floor drive Fixed castor:

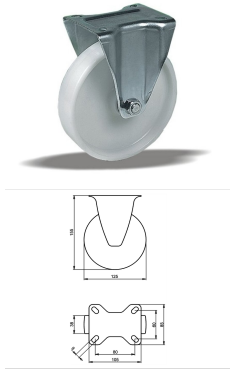
- ✓ acidic environment
- ✓ wear off
- ✓ rolling resistance

LIV SYSTEMS standard Fixed castor + solid polypropylene wheel Ø125 x W38mm for 150kg Prod ID: 42873

ID 42873: Castor overall height 155 mm | 4 mounting holes with distance 80x60 mm | Wheel with ball bearing and solid polypropylene wheel with hardness 60±5 Shore D | Long floor drive, for acidic environment, low wear off, low rolling resistance

Product information

- Article code 2-667-25K
- SKU 42873
- EAN 3838461428739



Product description

standard Fixed castor with an overall height of 155 mm

Wheel diameter x width: 125 x 38 mm

Top plate with 4 mounting holes of 9 mm, mounting hole distance 80x60 mm and top plate outer dimensions: 105x85 mm

Wheel with plain bearing and solid polypropylene wheel with hardness 60±5 Shore D.

Approved and tested load capacity

Dynamic 150 kg

Static 180 kg

Temperature range:

Continuous operation: -20 | +60°C

Short (10 min) exposure: /°C

Advantages of this Long floor drive Fixed castor:

- ✓ acidic environment
- ✓ wear off
- ✓ rolling resistance

LIV SYSTEMS standard Fixed castor + solid polypropylene wheel Ø125 x W38mm for 150kg Prod ID: 67021

ID 67021: Castor overall height 155 mm | 4 mounting holes with distance 80x60 mm | Wheel with plain bearing and solid polypropylene wheel with hardness 60±5 Shore D | Long floor drive, for acidic environment, low wear off, low rolling resistance

Product information

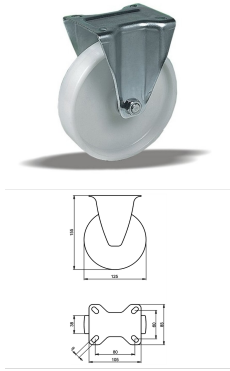
- Article code 2-677 ISO
- SKU 67021
- EAN 3838461670213

Specifications

The result of our quality is maximum performance!

[Close](#)

[Close](#)



Product description

standard Fixed castor with an overall height of 155 mm

Wheel diameter x width: 125 x 38 mm

Top plate with 4 mounting holes of 9 mm, mounting hole distance 80x60 mm and top plate outer dimensions: 105x85 mm

Wheel with roller bearing and solid polypropylene wheel with hardness 60±5 Shore D.

Approved and tested load capacity

Dynamic 150 kg

Static 180 kg

Temperature range:

Continuous operation: -20 | +60°C

Short (10 min) exposure: /°C

Advantages of this Long floor drive Fixed castor:

- ✓ acidic environment
- ✓ wear off
- ✓ rolling resistance

LIV SYSTEMS standard Fixed castor + solid polypropylene wheel Ø125 x W38mm for 150kg Prod ID: 67006

ID 67006: Castor overall height 155 mm | 4 mounting holes with distance 80x60 mm | Wheel with roller bearing and solid polypropylene wheel with hardness 60±5 Shore D | Long floor drive, for acidic environment, low wear off, low rolling resistance

Product information

- Article code 2-667 ISO
- SKU 67006
- EAN 3838461670060

Specifications

The result of our quality is maximum performance!

[Close](#)

[Close](#)



Product description

standard Fixed castor with an overall height of 155 mm

Wheel diameter x width: 125 x 38 mm

Top plate with 4 mounting holes of 9 mm, mounting hole distance 80x60 mm and top plate outer dimensions: 105x85 mm

Wheel with ball bearing and solid polypropylene wheel with hardness 60±5 Shore D.

Approved and tested load capacity

Dynamic 150 kg

Static 180 kg

Temperature range:

Continuous operation: -20 | +60°C

Short (10 min) exposure: /°C

Advantages of this Long floor drive Fixed castor:

- ✓ acidic environment
- ✓ wear off
- ✓ rolling resistance

LIV SYSTEMS standard Fixed castor + solid polypropylene wheel Ø125 x W38mm for 150kg Prod ID: 42865

ID 42865: Castor overall height 155 mm | 4 mounting holes with distance 80x60 mm | Wheel with ball bearing and solid polypropylene wheel with hardness 60±5 Shore D | Long floor drive, for acidic environment, low wear off, low rolling resistance

Product information

- Article code 2-667-25K
- SKU 42865
- EAN 3838461428654

Алматы (7273)495-231
Ангарск (3955)60-70-56
Архангельск (8182)63-90-72
Астрахань (8512)99-46-04
Барнаул (3852)73-04-60
Белгород (4722)40-23-64
Благовещенск (4162)22-76-07
Брянск (4832)59-03-52
Владивосток (423)249-28-31
Владикавказ (8672)28-90-48
Владимир (4922)49-43-18
Волгоград (844)278-03-48
Вологда (8172)26-41-59
Воронеж (473)204-51-73
Екатеринбург (343)384-55-89

Иваново (4932)77-34-06
Ижевск (3412)26-03-58
Иркутск (395)279-98-46
Казань (843)206-01-48
Калининград (4012)72-03-81
Калуга (4842)92-23-67
Кемерово (3842)65-04-62
Киров (8332)68-02-04
Коломна (4966)23-41-49
Кострома (4942)77-07-48
Краснодар (861)203-40-90
Красноярск (391)204-63-61
Курск (4712)77-13-04
Курган (3522)50-90-47
Липецк (4742)52-20-81

Магнитогорск (3519)55-03-13
Москва (495)268-04-70
Мурманск (8152)59-64-93
Набережные Челны (8552)20-53-41
Нижегород (831)429-08-12
Новокузнецк (3843)20-46-81
Ноябрьск (3496)41-32-12
Новосибирск (383)227-86-73
Омск (3812)21-46-40
Орел (4862)44-53-42
Оренбург (3532)37-68-04
Пенза (8412)22-31-16
Петрозаводск (8142)55-98-37
Псков (8112)59-10-37
Пермь (342)205-81-47

Ростов-на-Дону (863)308-18-15
Рязань (4912)46-61-64
Самара (846)206-03-16
Санкт-Петербург (812)309-46-40
Саратов (845)249-38-78
Севастополь (8692)22-31-93
Саранск (8342)22-96-24
Симферополь (3652)67-13-56
Смоленск (4812)29-41-54
Сочи (862)225-72-31
Ставрополь (8652)20-65-13
Сургут (3462)77-98-35
Сыктывкар (8212)25-95-17
Тамбов (4752)50-40-97
Тверь (4822)63-31-35

Тольятти (8482)63-91-07
Томск (3822)98-41-53
Тула (4872)33-79-87
Тюмень (3452)66-21-18
Ульяновск (8422)24-23-59
Улан-Удэ (3012)59-97-51
Уфа (347)229-48-12
Хабаровск (4212)92-98-04
Чебоксары (8352)28-53-07
Челябинск (351)202-03-61
Череповец (8202)49-02-64
Чита (3022)38-34-83
Якутск (4112)23-90-97
Ярославль (4852)69-52-93

Россия +7(495)268-04-70

Казахстан +7(7172)727-132

Киргизия +996(312)96-26-47

<https://liv.nt-rt.ru/> || vis@nt-rt.ru