

Product description

standard Swivel castor with brake with an overall height of 180 mm

Wheel diameter x width: 150 x 46 mm

Top plate with 4 mounting holes of 11 mm, mounting hole distance 105x80 mm and top plate outer dimensions: 135x110 mm

Wheel with roller bearing and solid polypropylene wheel with hardness 60±5 Shore D

the double brake system, brakes the turning of the wheel and the swivel rotation.

Approved and tested load capacity

Dynamic 250 kg

Static 310 kg

Temperature range:

Continuous operation: -20 | +60°C

Short (10 min) exposure: /°C

Advantages of this Long floor drive Swivel castor with brake:

- ✓ acidic environment
- ✓ wear off
- ✓ rolling resistance

LIV SYSTEMS standard Swivel castor with brake + solid polypropylene wheel Ø150 x W46mm for 250kg Prod ID: 30564

ID 30564: Castor overall height 180 mm | 4 mounting holes with distance 105x80 mm | Wheel with roller bearing and solid polypropylene wheel with hardness 60±5 Shore D | The double brake system, brakes the turning of the wheel and the swivel rotation. | L

Product information

- Article code 2-724 A
- SKU 30564
- EAN 3838461305641

Алматы (7273)495-231
Ангарск (3955)60-70-56
Архангельск (8182)63-90-72
Астрахань (8512)99-46-04
Барнаул (3852)73-04-60
Белгород (4722)40-23-64
Благовещенск (4162)22-76-07
Брянск (4832)59-03-52
Владивосток (423)249-28-31
Владикавказ (8672)28-90-48
Владимир (4922)49-43-18
Волгоград (844)278-03-48
Вологда (8172)26-41-59
Воронеж (473)204-51-73
Екатеринбург (343)384-55-89

Иваново (4932)77-34-06
Ижевск (3412)26-03-58
Иркутск (395)279-98-46
Казань (843)206-01-48
Калининград (4012)72-03-81
Калуга (4842)92-23-67
Кемерово (3842)65-04-62
Киров (8332)68-02-04
Коломна (4966)23-41-49
Кострома (4942)77-07-48
Краснодар (861)203-40-90
Красноярск (391)204-63-61
Курск (4712)77-13-04
Курган (3522)50-90-47
Липецк (4742)52-20-81

Магнитогорск (3519)55-03-13
Москва (495)268-04-70
Мурманск (8152)59-64-93
Набережные Челны (8552)20-53-41
Нижний Новгород (831)429-08-12
Новокузнецк (3843)20-46-81
Ноябрьск (3496)41-32-12
Новосибирск (383)227-86-73
Омск (3812)21-46-40
Орел (4862)44-53-42
Оренбург (3532)37-68-04
Пенза (8412)22-31-16
Петрозаводск (8142)55-98-37
Псков (8112)59-10-37
Пермь (342)205-81-47

Ростов-на-Дону (863)308-18-15
Рязань (4912)46-61-64
Самара (846)206-03-16
Санкт-Петербург (812)309-46-40
Саратов (845)249-38-78
Саранск (8342)22-96-24
Симферополь (3652)67-13-56
Смоленск (4812)29-41-54
Сочи (862)225-72-31
Ставрополь (8652)20-65-13
Сургут (3462)77-98-35
Сыктывкар (8212)25-95-17
Тамбов (4752)50-40-97
Тверь (4822)63-31-35

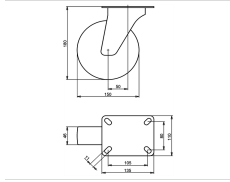
Тольятти (8482)63-91-07
Томск (3822)98-41-53
Тула (4872)33-79-87
Тюмень (3452)66-21-18
Ульяновск (8422)24-23-59
Улан-Удэ (3012)59-97-51
Уфа (347)229-48-12
Хабаровск (4212)92-98-04
Чебоксары (8352)28-53-07
Челябинск (351)202-03-61
Череповец (8202)49-02-64
Чита (3022)38-34-83
Якутск (4112)23-90-97
Ярославль (4852)69-52-93

Россия +7(495)268-04-70

Казахстан +7(7172)727-132

Киргизия +996(312)96-26-47

<https://liv.nt-rt.ru/> || vis@nt-rt.ru



Product description

standard Swivel castor with an overall height of 180 mm

Wheel diameter x width: 150 x 46 mm

Top plate with 4 mounting holes of 11 mm, mounting hole distance 105x80 mm and top plate outer dimensions: 135x110 mm

Wheel with roller bearing and solid polypropylene wheel with hardness 60±5 Shore D.

Approved and tested load capacity

Dynamic 250 kg

Static 310 kg

Temperature range:

Continuous operation: -20 | +60°C

Short (10 min) exposure: /°C

Advantages of this Long floor drive Swivel castor:

- ✓ acidic environment
- ✓ wear off
- ✓ rolling resistance

LIV SYSTEMS standard Swivel castor + solid polypropylene wheel Ø150 x W46mm for 250kg Prod ID: 60802

ID 60802: Castor overall height 180 mm | 4 mounting holes with distance 105x80 mm | Wheel with roller bearing and solid polypropylene wheel with hardness 60±5 Shore D |

Long floor drive, for acidic environment, low wear off, low rolling resistance

Product information

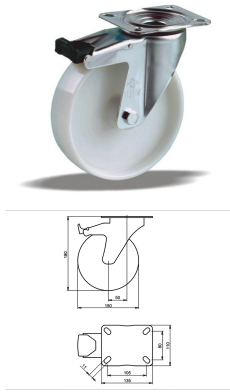
- Article code 2-663 ISO
- SKU 60802
- EAN 3838461608025

Specifications

The result of our quality is maximum performance!

[Close](#)

[Close](#)



Product description

standard Swivel castor with brake with an overall height of 180 mm
 Wheel diameter x width: 150 x 46 mm
 Top plate with 4 mounting holes of 11 mm, mounting hole distance 105x80 mm and top plate outer dimensions: 135x110 mm
 Wheel with roller bearing and solid polypropylene wheel with hardness 60±5 Shore D
 the double brake system, brakes the turning of the wheel and the swivel rotation.

Approved and tested load capacity

Dynamic 250 kg
 Static 310 kg

Temperature range:

Continuous operation: -20 | +60°C
 Short (10 min) exposure: /°C

Advantages of this Long floor drive Swivel castor with brake:

- ✓ acidic environment
- ✓ wear off
- ✓ rolling resistance

LIV SYSTEMS standard Swivel castor with brake + solid polypropylene wheel Ø150 x W46mm for 250kg Prod ID: 30664

ID 30664: Castor overall height 180 mm | 4 mounting holes with distance 105x80 mm | Wheel with roller bearing and solid polypropylene wheel with hardness 60±5 Shore D | The double brake system, brakes the turning of the wheel and the swivel rotation. | L

Product information

- Article code 2-724 A
- SKU 30664
- EAN 3838461306648

Specifications

The result of our quality is maximum performance!

[Close](#)

[Close](#)



Product description

standard Wheel with plain bearing and solid polypropylene wheel with hardness 60±5 Shore D

Wheel diameter x width: 150 x 46 mm

Axle hole: 20 mm

Hub length: mm

Approved and tested load capacity

Dynamic 250 kg

Static 310 kg

Temperature range:

Continuous operation: -20 | +60°C

Short (10 min) exposure: /°C

Advantages of this Long floor drive wheel:

- ✓ acidic environment
- ✓ wear off
- ✓ rolling resistance

LIV SYSTEMS standard wheel + solid polypropylene wheel Ø150 x W46mm for 250kg Prod ID: 66724

ID 66724: standard Wheel with plain bearing and solid polypropylene wheel with hardness 60±5 Shore D | Axle hole: 20 mm | Hub length: mm | Long floor drive, for acidic environment, low wear off, low rolling resistance

Product information

- Article code 2-763 ISO
- SKU 66724
- EAN 3838461667244



Product description

standard Wheel with plain bearing and solid polypropylene wheel with hardness 60±5 Shore D

Wheel diameter x width: 150 x 46 mm

Axle hole: 20 mm

Hub length: mm

Approved and tested load capacity

Dynamic 250 kg

Static 310 kg

Temperature range:

Continuous operation: -20 | +60°C

Short (10 min) exposure: /°C

Advantages of this Long floor drive wheel:

- ✓ acidic environment
- ✓ wear off
- ✓ rolling resistance

LIV SYSTEMS standard wheel + solid polypropylene wheel Ø150 x W46mm for 250kg Prod ID: 59218

ID 59218: standard Wheel with plain bearing and solid polypropylene wheel with hardness 60±5 Shore D | Axle hole: 20 mm | Hub length: mm | Long floor drive, for acidic environment, low wear off, low rolling resistance

Product information

- Article code 2-763 ISO
- SKU 59218
- EAN 3838461592188



Product description

standard Wheel with roller bearing and solid polypropylene wheel with hardness 60±5 Shore D

Wheel diameter x width: 150 x 46 mm

Axle hole: 20 mm

Hub length: mm

Approved and tested load capacity

Dynamic 250 kg

Static 310 kg

Temperature range:

Continuous operation: -20 | +60°C

Short (10 min) exposure: /°C

Advantages of this Long floor drive wheel:

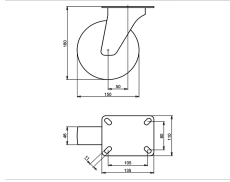
- ✓ acidic environment
- ✓ wear off
- ✓ rolling resistance

LIV SYSTEMS standard wheel + solid polypropylene wheel Ø150 x W46mm for 250kg Prod ID: 66720

ID 66720: standard Wheel with roller bearing and solid polypropylene wheel with hardness 60±5 Shore D | Axle hole: 20 mm | Hub length: mm | Long floor drive, for acidic environment, low wear off, low rolling resistance

Product information

- Article code 2-753 ISO
- SKU 66720
- EAN 3838461667206



Product description

standard Swivel castor with an overall height of 180 mm

Wheel diameter x width: 150 x 46 mm

Top plate with 4 mounting holes of 11 mm, mounting hole distance 105x80 mm and top plate outer dimensions: 135x110 mm

Wheel with plain bearing and solid polypropylene wheel with hardness 60±5 Shore D.

Approved and tested load capacity

Dynamic 250 kg

Static 310 kg

Temperature range:

Continuous operation: -20 | +60°C

Short (10 min) exposure: /°C

Advantages of this Long floor drive Swivel castor:

- ✓ acidic environment
- ✓ wear off
- ✓ rolling resistance

LIV SYSTEMS standard Swivel castor + solid polypropylene wheel Ø150 x W46mm for 250kg Prod ID: 60811

ID 60811: Castor overall height 180 mm | 4 mounting holes with distance 105x80 mm | Wheel with plain bearing and solid polypropylene wheel with hardness 60±5 Shore D | Long floor drive, for acidic environment, low wear off, low rolling resistance

Product information

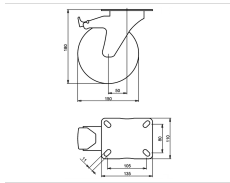
- Article code 2-673 ISO
- SKU 60811
- EAN 3838461608117

Specifications

The result of our quality is maximum performance!

[Close](#)

[Close](#)



Product description

standard Swivel castor with brake with an overall height of 180 mm

Wheel diameter x width: 150 x 46 mm

Top plate with 4 mounting holes of 11 mm, mounting hole distance 105x80 mm and top plate outer dimensions: 135x110 mm

Wheel with plain bearing and solid polypropylene wheel with hardness 60±5 Shore D

the double brake system, brakes the turning of the wheel and the swivel rotation.

Approved and tested load capacity

Dynamic 250 kg

Static 310 kg

Temperature range:

Continuous operation: -20 | +60°C

Short (10 min) exposure: /°C

Advantages of this Long floor drive Swivel castor with brake:

- ✓ acidic environment
- ✓ wear off
- ✓ rolling resistance

LIV SYSTEMS standard Swivel castor with brake + solid polypropylene wheel Ø150 x W46mm for 250kg Prod ID: 30565

ID 30565: Castor overall height 180 mm | 4 mounting holes with distance 105x80 mm | Wheel with plain bearing and solid polypropylene wheel with hardness 60±5 Shore D | The double brake system, brakes the turning of the wheel and the swivel rotation. | Lo

Product information

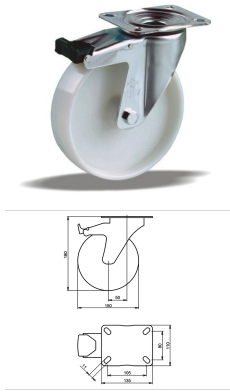
- Article code 2-685 A
- SKU 30565
- EAN 3838461305658

Specifications

The result of our quality is maximum performance!

[Close](#)

[Close](#)



Product description

standard Swivel castor with brake with an overall height of 180 mm
 Wheel diameter x width: 150 x 46 mm
 Top plate with 4 mounting holes of 11 mm, mounting hole distance 105x80 mm and top plate outer dimensions: 135x110 mm
 Wheel with plain bearing and solid polypropylene wheel with hardness 60±5 Shore D
 the double brake system, brakes the turning of the wheel and the swivel rotation.

Approved and tested load capacity

Dynamic 250 kg
 Static 310 kg

Temperature range:

Continuous operation: -20 | +60°C
 Short (10 min) exposure: /°C

Advantages of this Long floor drive Swivel castor with brake:

- ✓ acidic environment
- ✓ wear off
- ✓ rolling resistance

LIV SYSTEMS standard Swivel castor with brake + solid polypropylene wheel Ø150 x W46mm for 250kg Prod ID: 30673

ID 30673: Castor overall height 180 mm | 4 mounting holes with distance 105x80 mm | Wheel with plain bearing and solid polypropylene wheel with hardness 60±5 Shore D | The double brake system, brakes the turning of the wheel and the swivel rotation. | Lo

Product information

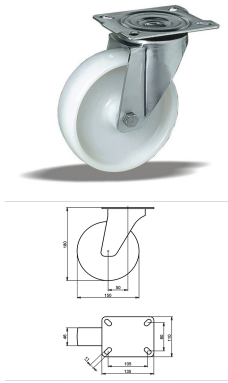
- Article code 2-685 A
- SKU 30673
- EAN 3838461306730

Specifications

The result of our quality is maximum performance!

[Close](#)

[Close](#)



Product description

standard Swivel castor with an overall height of 180 mm

Wheel diameter x width: 150 x 46 mm

Top plate with 4 mounting holes of 11 mm, mounting hole distance 105x80 mm and top plate outer dimensions: 135x110 mm

Wheel with plain bearing and solid polypropylene wheel with hardness 60±5 Shore D.

Approved and tested load capacity

Dynamic 250 kg

Static 310 kg

Temperature range:

Continuous operation: -20 | +60°C

Short (10 min) exposure: /°C

Advantages of this Long floor drive Swivel castor:

- ✓ acidic environment
- ✓ wear off
- ✓ rolling resistance

LIV SYSTEMS standard Swivel castor + solid polypropylene wheel Ø150 x W46mm for 250kg Prod ID: 66855

ID 66855: Castor overall height 180 mm | 4 mounting holes with distance 105x80 mm | Wheel with plain bearing and solid polypropylene wheel with hardness 60±5 Shore D | Long floor drive, for acidic environment, low wear off, low rolling resistance

Product information

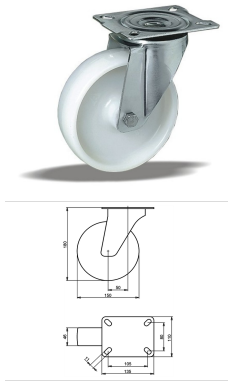
- Article code 2-673 ISO
- SKU 66855
- EAN 3838461668555

Specifications

The result of our quality is maximum performance!

[Close](#)

[Close](#)



Product description

standard Swivel castor with an overall height of 180 mm

Wheel diameter x width: 150 x 46 mm

Top plate with 4 mounting holes of 11 mm, mounting hole distance 105x80 mm and top plate outer dimensions: 135x110 mm

Wheel with roller bearing and solid polypropylene wheel with hardness 60±5 Shore D.

Approved and tested load capacity

Dynamic 250 kg

Static 310 kg

Temperature range:

Continuous operation: -20 | +60°C

Short (10 min) exposure: /°C

Advantages of this Long floor drive Swivel castor:

- ✓ acidic environment
- ✓ wear off
- ✓ rolling resistance

LIV SYSTEMS standard Swivel castor + solid polypropylene wheel Ø150 x W46mm for 250kg Prod ID: 66739

ID 66739: Castor overall height 180 mm | 4 mounting holes with distance 105x80 mm | Wheel with roller bearing and solid polypropylene wheel with hardness 60±5 Shore D | Long floor drive, for acidic environment, low wear off, low rolling resistance

Product information

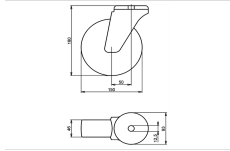
- Article code 2-663 ISO
- SKU 66739
- EAN 3838461667398

Specifications

The result of our quality is maximum performance!

[Close](#)

[Close](#)



Product description

standard Swivel castor with an overall height of 180 mm

Wheel diameter x width: 150 x 46 mm

Top plate with 4 mounting holes of 12,5 mm, mounting hole distance #\$\$ mm and top plate outer dimensions: 93 mm

Wheel with plain bearing and solid polypropylene wheel with hardness 60±5 Shore D.

Approved and tested load capacity

Dynamic 250 kg

Static 310 kg

Temperature range:

Continuous operation: -20 | +60°C

Short (10 min) exposure: /°C

Advantages of this Long floor drive Swivel castor:

- ✓ acidic environment
- ✓ wear off
- ✓ rolling resistance

LIV SYSTEMS standard Swivel castor + solid polypropylene wheel Ø150 x W46mm for 250kg Prod ID: 34295

ID 34295: Castor overall height 180 mm | 4 mounting holes with distance #\$\$ mm | Wheel with plain bearing and solid polypropylene wheel with hardness 60±5 Shore D | Long floor drive, for acidic environment, low wear off, low rolling resistance

Product information

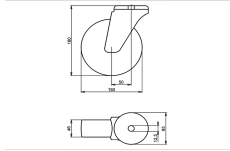
- Article code 2-768 L12
- SKU 34295
- EAN 3838461342950

Specifications

The result of our quality is maximum performance!

[Close](#)

[Close](#)



Product description

standard Swivel castor with an overall height of 180 mm

Wheel diameter x width: 150 x 46 mm

Top plate with 4 mounting holes of 12,5 mm, mounting hole distance #\$\$% mm and top plate outer dimensions: 93 mm

Wheel with roller bearing and solid polypropylene wheel with hardness 60±5 Shore D.

Approved and tested load capacity

Dynamic 250 kg

Static 310 kg

Temperature range:

Continuous operation: -20 | +60°C

Short (10 min) exposure: /°C

Advantages of this Long floor drive Swivel castor:

- ✓ acidic environment
- ✓ wear off
- ✓ rolling resistance

LIV SYSTEMS standard Swivel castor + solid polypropylene wheel Ø150 x W46mm for 250kg Prod ID: 34293

ID 34293: Castor overall height 180 mm | 4 mounting holes with distance #\$\$% mm | Wheel with roller bearing and solid polypropylene wheel with hardness 60±5 Shore D | Long floor drive, for acidic environment, low wear off, low rolling resistance

Product information

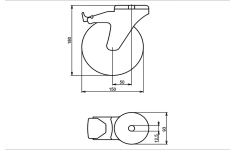
- Article code 2-758 L12
- SKU 34293
- EAN 3838461342936

Specifications

The result of our quality is maximum performance!

[Close](#)

[Close](#)



Product description

standard Swivel castor with brake with an overall height of 180 mm

Wheel diameter x width: 150 x 46 mm

Top plate with 4 mounting holes of 12,5 mm, mounting hole distance #\$\$ mm and top plate outer dimensions: 93 mm

Wheel with plain bearing and solid polypropylene wheel with hardness 60±5 Shore D

the double brake system, brakes the turning of the wheel and the swivel rotation.

Approved and tested load capacity

Dynamic 250 kg

Static 310 kg

Temperature range:

Continuous operation: -20 | +60°C

Short (10 min) exposure: /°C

Advantages of this Long floor drive Swivel castor with brake:

- ✓ acidic environment
- ✓ wear off
- ✓ rolling resistance

LIV SYSTEMS standard Swivel castor with brake + solid polypropylene wheel Ø150 x W46mm for 250kg Prod ID: 34554

ID 34554: Castor overall height 180 mm | 4 mounting holes with distance #\$\$ mm | Wheel with plain bearing and solid polypropylene wheel with hardness 60±5 Shore D | The double brake system, brakes the turning of the wheel and the swivel rotation. | Long

Product information

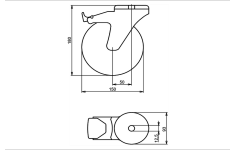
- Article code 2-796 L12
- SKU 34554
- EAN 3838461345548

Specifications

The result of our quality is maximum performance!

[Close](#)

[Close](#)



Product description

standard Swivel castor with brake with an overall height of 180 mm
Wheel diameter x width: 150 x 46 mm
Top plate with 4 mounting holes of 12,5 mm, mounting hole distance #\$\$ mm and top plate outer dimensions: 93 mm
Wheel with roller bearing and solid polypropylene wheel with hardness 60±5 Shore D
the double brake system, brakes the turning of the wheel and the swivel rotation.

Approved and tested load capacity

Dynamic 250 kg
Static 310 kg

Temperature range:

Continuous operation: -20 | +60°C
Short (10 min) exposure: /°C

Advantages of this Long floor drive Swivel castor with brake:

- ✓ acidic environment
- ✓ wear off
- ✓ rolling resistance

LIV SYSTEMS standard Swivel castor with brake + solid polypropylene wheel Ø150 x W46mm for 250kg Prod ID: 34553

ID 34553: Castor overall height 180 mm | 4 mounting holes with distance #\$\$ mm | Wheel with roller bearing and solid polypropylene wheel with hardness 60±5 Shore D | The double brake system, brakes the turning of the wheel and the swivel rotation. | Long

Product information

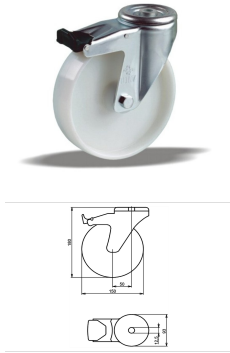
- Article code 2-791 L12
- SKU 34553
- EAN 3838461345531

Specifications

The result of our quality is maximum performance!

[Close](#)

[Close](#)



Product description

standard Swivel castor with brake with an overall height of 180 mm
 Wheel diameter x width: 150 x 46 mm
 Top plate with 4 mounting holes of 12,5 mm, mounting hole distance #\$\$ mm and top plate outer dimensions: 93 mm
 Wheel with plain bearing and solid polypropylene wheel with hardness 60±5 Shore D
 the double brake system, brakes the turning of the wheel and the swivel rotation.

Approved and tested load capacity

Dynamic 250 kg
 Static 310 kg

Temperature range:

Continuous operation: -20 | +60°C
 Short (10 min) exposure: /°C

Advantages of this Long floor drive Swivel castor with brake:

- ✓ acidic environment
- ✓ wear off
- ✓ rolling resistance

LIV SYSTEMS standard Swivel castor with brake + solid polypropylene wheel Ø150 x W46mm for 250kg Prod ID: 34604

ID 34604: Castor overall height 180 mm | 4 mounting holes with distance #\$\$ mm | Wheel with plain bearing and solid polypropylene wheel with hardness 60±5 Shore D | The double brake system, brakes the turning of the wheel and the swivel rotation. | Long

Product information

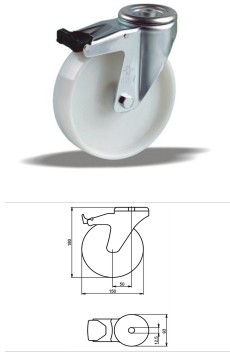
- Article code 2-796 L12
- SKU 34604
- EAN 3838461346040

Specifications

The result of our quality is maximum performance!

[Close](#)

[Close](#)



Product description

standard Swivel castor with brake with an overall height of 180 mm
 Wheel diameter x width: 150 x 46 mm
 Top plate with 4 mounting holes of 12,5 mm, mounting hole distance #\$\$ mm and top plate outer dimensions: 93 mm
 Wheel with roller bearing and solid polypropylene wheel with hardness 60±5 Shore D
 the double brake system, brakes the turning of the wheel and the swivel rotation.

Approved and tested load capacity

Dynamic 250 kg
 Static 310 kg

Temperature range:

Continuous operation: -20 | +60°C
 Short (10 min) exposure: /°C

Advantages of this Long floor drive Swivel castor with brake:

- ✓ acidic environment
- ✓ wear off
- ✓ rolling resistance

LIV SYSTEMS standard Swivel castor with brake + solid polypropylene wheel Ø150 x W46mm for 250kg Prod ID: 34603

ID 34603: Castor overall height 180 mm | 4 mounting holes with distance #\$\$ mm | Wheel with roller bearing and solid polypropylene wheel with hardness 60±5 Shore D | The double brake system, brakes the turning of the wheel and the swivel rotation. | Long

Product information

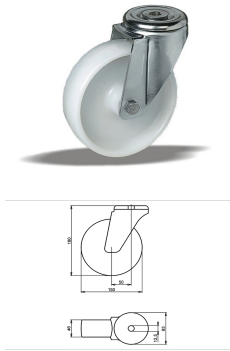
- Article code 2-791 L12
- SKU 34603
- EAN 3838461346033

Specifications

The result of our quality is maximum performance!

[Close](#)

[Close](#)



Product description

standard Swivel castor with an overall height of 180 mm

Wheel diameter x width: 150 x 46 mm

Top plate with 4 mounting holes of 12,5 mm, mounting hole distance #\$\$ mm and top plate outer dimensions: 93 mm

Wheel with plain bearing and solid polypropylene wheel with hardness 60±5 Shore D.

Approved and tested load capacity

Dynamic 250 kg

Static 310 kg

Temperature range:

Continuous operation: -20 | +60°C

Short (10 min) exposure: /°C

Advantages of this Long floor drive Swivel castor:

- ✓ acidic environment
- ✓ wear off
- ✓ rolling resistance

LIV SYSTEMS standard Swivel castor + solid polypropylene wheel Ø150 x W46mm for 250kg Prod ID: 34354

ID 34354: Castor overall height 180 mm | 4 mounting holes with distance #\$\$ mm | Wheel with plain bearing and solid polypropylene wheel with hardness 60±5 Shore D | Long floor drive, for acidic environment, low wear off, low rolling resistance

Product information

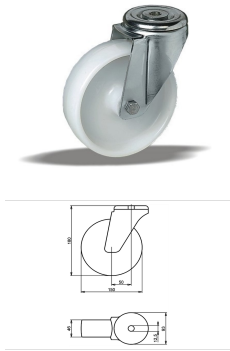
- Article code 2-768 L12
- SKU 34354
- EAN 3838461343544

Specifications

The result of our quality is maximum performance!

[Close](#)

[Close](#)



Product description

standard Swivel castor with an overall height of 180 mm

Wheel diameter x width: 150 x 46 mm

Top plate with 4 mounting holes of 12,5 mm, mounting hole distance #\$\$ mm and top plate outer dimensions: 93 mm

Wheel with roller bearing and solid polypropylene wheel with hardness 60±5 Shore D.

Approved and tested load capacity

Dynamic 250 kg

Static 310 kg

Temperature range:

Continuous operation: -20 | +60°C

Short (10 min) exposure: /°C

Advantages of this Long floor drive Swivel castor:

- ✓ acidic environment
- ✓ wear off
- ✓ rolling resistance

LIV SYSTEMS standard Swivel castor + solid polypropylene wheel Ø150 x W46mm for 250kg Prod ID: 34345

ID 34345: Castor overall height 180 mm | 4 mounting holes with distance #\$\$ mm | Wheel with roller bearing and solid polypropylene wheel with hardness 60±5 Shore D | Long floor drive, for acidic environment, low wear off, low rolling resistance

Product information

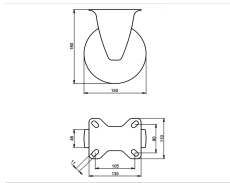
- Article code 2-758 L12
- SKU 34345
- EAN 3838461343452

Specifications

The result of our quality is maximum performance!

[Close](#)

[Close](#)



Product description

standard Fixed castor with an overall height of 180 mm

Wheel diameter x width: 150 x 46 mm

Top plate with 4 mounting holes of 11 mm, mounting hole distance 105x80 mm and top plate outer dimensions: 135x110 mm

Wheel with plain bearing and solid polypropylene wheel with hardness 60±5 Shore D.

Approved and tested load capacity

Dynamic 250 kg

Static 310 kg

Temperature range:

Continuous operation: -20 | +60°C

Short (10 min) exposure: /°C

Advantages of this Long floor drive Fixed castor:

- ✓ acidic environment
- ✓ wear off
- ✓ rolling resistance

LIV SYSTEMS standard Fixed castor + solid polypropylene wheel Ø150 x W46mm for 250kg Prod ID: 60816

ID 60816: Castor overall height 180 mm | 4 mounting holes with distance 105x80 mm | Wheel with plain bearing and solid polypropylene wheel with hardness 60±5 Shore D | Long floor drive, for acidic environment, low wear off, low rolling resistance

Product information

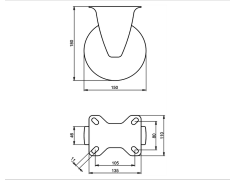
- Article code 2-678 ISO
- SKU 60816
- EAN 3838461608162

Specifications

The result of our quality is maximum performance!

[Close](#)

[Close](#)



Product description

standard Fixed castor with an overall height of 180 mm

Wheel diameter x width: 150 x 46 mm

Top plate with 4 mounting holes of 11 mm, mounting hole distance 105x80 mm and top plate outer dimensions: 135x110 mm

Wheel with roller bearing and solid polypropylene wheel with hardness 60±5 Shore D.

Approved and tested load capacity

Dynamic 250 kg

Static 310 kg

Temperature range:

Continuous operation: -20 | +60°C

Short (10 min) exposure: /°C

Advantages of this Long floor drive Fixed castor:

- ✓ acidic environment
- ✓ wear off
- ✓ rolling resistance

LIV SYSTEMS standard Fixed castor + solid polypropylene wheel Ø150 x W46mm for 250kg Prod ID: 60806

ID 60806: Castor overall height 180 mm | 4 mounting holes with distance 105x80 mm | Wheel with roller bearing and solid polypropylene wheel with hardness 60±5 Shore D | Long floor drive, for acidic environment, low wear off, low rolling resistance

Product information

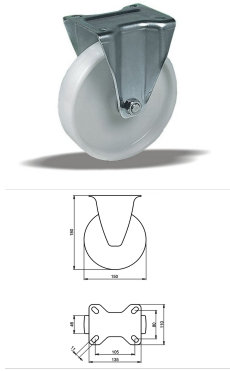
- Article code 2-668 ISO
- SKU 60806
- EAN 3838461608063

Specifications

The result of our quality is maximum performance!

[Close](#)

[Close](#)



Product description

standard Fixed castor with an overall height of 180 mm

Wheel diameter x width: 150 x 46 mm

Top plate with 4 mounting holes of 11 mm, mounting hole distance 105x80 mm and top plate outer dimensions: 135x110 mm

Wheel with plain bearing and solid polypropylene wheel with hardness 60±5 Shore D.

Approved and tested load capacity

Dynamic 250 kg

Static 310 kg

Temperature range:

Continuous operation: -20 | +60°C

Short (10 min) exposure: /°C

Advantages of this Long floor drive Fixed castor:

- ✓ acidic environment
- ✓ wear off
- ✓ rolling resistance

LIV SYSTEMS standard Fixed castor + solid polypropylene wheel Ø150 x W46mm for 250kg Prod ID: 67022

ID 67022: Castor overall height 180 mm | 4 mounting holes with distance 105x80 mm | Wheel with plain bearing and solid polypropylene wheel with hardness 60±5 Shore D | Long floor drive, for acidic environment, low wear off, low rolling resistance

Product information

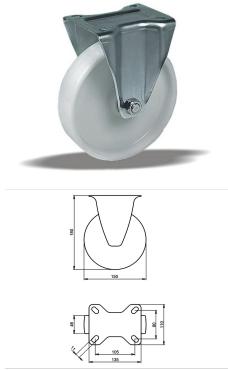
- Article code 2-678 ISO
- SKU 67022
- EAN 3838461670220

Specifications

The result of our quality is maximum performance!

[Close](#)

[Close](#)



Product description

standard Fixed castor with an overall height of 180 mm

Wheel diameter x width: 150 x 46 mm

Top plate with 4 mounting holes of 11 mm, mounting hole distance 105x80 mm and top plate outer dimensions: 135x110 mm

Wheel with roller bearing and solid polypropylene wheel with hardness 60±5 Shore D.

Approved and tested load capacity

Dynamic 250 kg

Static 310 kg

Temperature range:

Continuous operation: -20 | +60°C

Short (10 min) exposure: /°C

Advantages of this Long floor drive Fixed castor:

- ✓ acidic environment
- ✓ wear off
- ✓ rolling resistance

LIV SYSTEMS standard Fixed castor + solid polypropylene wheel Ø150 x W46mm for 250kg Prod ID: 67007

ID 67007: Castor overall height 180 mm | 4 mounting holes with distance 105x80 mm | Wheel with roller bearing and solid polypropylene wheel with hardness 60±5 Shore D | Long floor drive, for acidic environment, low wear off, low rolling resistance

Product information

- Article code 2-668 ISO
- SKU 67007
- EAN 3838461670077

Specifications

The result of our quality is maximum performance!

[Close](#)

[Close](#)



Product description

standard Wheel with roller bearing and solid polypropylene wheel with hardness 60±5 Shore D

Wheel diameter x width: 150 x 46 mm

Axle hole: 20 mm

Hub length: mm

Approved and tested load capacity

Dynamic 250 kg

Static 310 kg

Temperature range:

Continuous operation: -20 | +60°C

Short (10 min) exposure: /°C

Advantages of this Long floor drive wheel:

- ✓ acidic environment
- ✓ wear off
- ✓ rolling resistance

LIV SYSTEMS standard wheel + solid polypropylene wheel Ø150 x W46mm for 250kg Prod ID: 58503

ID 58503: standard Wheel with roller bearing and solid polypropylene wheel with hardness 60±5 Shore D | Axle hole: 20 mm | Hub length: mm | Long floor drive, for acidic environment, low wear off, low rolling resistance

Product information

- Article code 2-753 ISO
- SKU 58503
- EAN 3838461585036

Алматы (7273)495-231
Ангарск (3955)60-70-56
Архангельск (8182)63-90-72
Астрахань (8512)99-46-04
Барнаул (3852)73-04-60
Белгород (4722)40-23-64
Благовещенск (4162)22-76-07
Брянск (4832)59-03-52
Владивосток (423)249-28-31
Владикавказ (8672)28-90-48
Владимир (4922)49-43-18
Волгоград (844)278-03-48
Вологда (8172)26-41-59
Воронеж (473)204-51-73
Екатеринбург (343)384-55-89

Иваново (4932)77-34-06
Ижевск (3412)26-03-58
Иркутск (395)279-98-46
Казань (843)206-01-48
Калининград (4012)72-03-81
Калуга (4842)92-23-67
Кемерово (3842)65-04-62
Киров (8332)68-02-04
Коломна (4966)23-41-49
Кострома (4942)77-07-48
Краснодар (861)203-40-90
Красноярск (391)204-63-61
Курск (4712)77-13-04
Курган (3522)50-90-47
Липецк (4742)52-20-81

Магнитогорск (3519)55-03-13
Москва (495)268-04-70
Мурманск (8152)59-64-93
Набережные Челны (8552)20-53-41
Нижний Новгород (831)429-08-12
Новокузнецк (3843)20-46-81
Ноябрьск (3496)41-32-12
Новосибирск (383)227-86-73
Омск (3812)21-46-40
Орел (4862)44-53-42
Оренбург (3532)37-68-04
Пенза (8412)22-31-16
Петрозаводск (8142)55-98-37
Псков (8112)59-10-37
Пермь (342)205-81-47

Ростов-на-Дону (863)308-18-15
Рязань (4912)46-61-64
Самара (846)206-03-16
Санкт-Петербург (812)309-46-40
Саратов (845)249-38-78
Севастополь (8692)22-31-93
Саранск (8342)22-96-24
Симферополь (3652)67-13-56
Смоленск (4812)29-41-54
Сочи (862)225-72-31
Ставрополь (8652)20-65-13
Сургут (3462)77-98-35
Сыктывкар (8212)25-95-17
Тамбов (4752)50-40-97
Тверь (4822)63-31-35

Тольятти (8482)63-91-07
Томск (3822)98-41-53
Тула (4872)33-79-87
Тюмень (3452)66-21-18
Ульяновск (8422)24-23-59
Уфа (347)229-48-12
Хабаровск (4212)92-98-04
Чебоксары (8352)28-53-07
Челябинск (351)202-03-61
Череповец (8202)49-02-64
Чита (3022)38-34-83
Якутск (4112)23-90-97
Ярославль (4852)69-52-93

Россия +7(495)268-04-70

Казахстан +7(7172)727-132

Киргизия +996(312)96-26-47

<https://liv.nt-rt.ru/> || vis@nt-rt.ru