

Алматы (7273)495-231  
Ангарск (3955)60-70-56  
Архангельск (8182)63-90-72  
Астрахань (8512)99-46-04  
Барнаул (3852)73-04-60  
Белгород (4722)40-23-64  
Благовещенск (4162)22-76-07  
Брянск (4832)59-03-52  
Владивосток (423)249-28-31  
Владикавказ (8672)28-90-48  
Владимир (4922)49-43-18  
Волгоград (844)278-03-48  
Вологда (8172)26-41-59  
Воронеж (473)204-51-73  
Екатеринбург (343)384-55-89

Иваново (4932)77-34-06  
Ижевск (3412)26-03-58  
Иркутск (395)279-98-46  
Казань (843)206-01-48  
Калининград (4012)72-03-81  
Калуга (4842)92-23-67  
Кемерово (3842)65-04-62  
Киров (8332)68-02-04  
Коломна (4966)23-41-49  
Кострома (4942)77-07-48  
Краснодар (861)203-40-90  
Красноярск (391)204-63-61  
Курск (4712)77-13-04  
Курган (3522)50-90-47  
Липецк (4742)52-20-81

Магнитогорск (3519)55-03-13  
Москва (495)268-04-70  
Мурманск (8152)59-64-93  
Набережные Челны (8552)20-53-41  
Нижний Новгород (831)429-08-12  
Новокузнецк (3843)20-46-81  
Ноябрьск (3496)41-32-12  
Новосибирск (383)227-86-73  
Омск (3812)21-46-40  
Орел (4862)44-53-42  
Оренбург (3532)37-68-04  
Пенза (8412)22-31-16  
Петрозаводск (8142)55-98-37  
Псков (8112)59-10-37  
Пермь (342)205-81-47

Ростов-на-Дону (863)308-18-15  
Рязань (4912)46-61-64  
Самара (846)206-03-16  
Санкт-Петербург (812)309-46-40  
Саратов (845)249-38-78  
Севастополь (8692)22-31-93  
Саранск (8342)22-96-24  
Симферополь (3652)67-13-56  
Смоленск (4812)29-41-54  
Сочи (862)225-72-31  
Ставрополь (8652)20-65-13  
Сургут (3462)77-98-35  
Сыктывкар (8212)25-95-17  
Тамбов (4752)50-40-97  
Тверь (4822)63-31-35

Тольятти (8482)63-91-07  
Томск (3822)98-41-53  
Тула (4872)33-79-87  
Тюмень (3452)66-21-18  
Ульяновск (8422)24-23-59  
Улан-Удэ (3012)59-97-51  
Уфа (347)229-48-12  
Хабаровск (4212)92-98-04  
Чебоксары (8352)28-53-07  
Челябинск (351)202-03-61  
Череповец (8202)49-02-64  
Чита (3022)38-34-83  
Якутск (4112)23-90-97  
Ярославль (4852)69-52-93

Россия +7(495)268-04-70

Казахстан +7(7172)727-132

Киргизия +996(312)96-26-47

<https://liv.nt-rt.ru/> || [vis@nt-rt.ru](mailto:vis@nt-rt.ru)



## Product description

standard Wheel with roller bearing and solid polypropylene wheel with hardness 60±5 Shore D

Wheel diameter x width: 200 x 50 mm

Axle hole: 20 mm

Hub length: mm

### Approved and tested load capacity

Dynamic 250 kg

Static 310 kg

### Temperature range:

Continuous operation: -20 | +60°C

Short (10 min) exposure: /°C

### Advantages of this Long floor drive wheel:

✓ acidic environment

✓ wear off

✓ rolling resistance

## LIV SYSTEMS standard wheel + solid polypropylene wheel Ø200 x W50mm for 250kg Prod ID: 58508

ID 58508: standard Wheel with roller bearing and solid polypropylene wheel with hardness 60±5 Shore D | Axle hole: 20 mm | Hub length: mm | Long floor drive, for acidic environment, low wear off, low rolling resistance

## Product information

- Article code 2-754 ISO
- SKU 58508
- EAN 3838461585081



## Product description

standard Wheel with plain bearing and solid polypropylene wheel with hardness 60±5 Shore D

Wheel diameter x width: 200 x 50 mm

Axle hole: 20 mm

Hub length: mm

### Approved and tested load capacity

Dynamic 250 kg

Static 310 kg

### Temperature range:

Continuous operation: -20 | +60°C

Short (10 min) exposure: /°C

### Advantages of this Long floor drive wheel:

- ✓ acidic environment
- ✓ wear off
- ✓ rolling resistance

## LIV SYSTEMS standard wheel + solid polypropylene wheel Ø200 x W50mm for 250kg Prod ID: 66725

ID 66725: standard Wheel with plain bearing and solid polypropylene wheel with hardness 60±5 Shore D | Axle hole: 20 mm | Hub length: mm | Long floor drive, for acidic environment, low wear off, low rolling resistance

## Product information

- Article code 2-764 ISO
- SKU 66725
- EAN 3838461667251



## Product description

standard Wheel with plain bearing and solid polypropylene wheel with hardness 60±5 Shore D

Wheel diameter x width: 200 x 50 mm

Axle hole: 20 mm

Hub length: mm

### Approved and tested load capacity

Dynamic 250 kg

Static 310 kg

### Temperature range:

Continuous operation: -20 | +60°C

Short (10 min) exposure: /°C

### Advantages of this Long floor drive wheel:

- ✓ acidic environment
- ✓ wear off
- ✓ rolling resistance

## LIV SYSTEMS standard wheel + solid polypropylene wheel Ø200 x W50mm for 250kg Prod ID: 59219

ID 59219: standard Wheel with plain bearing and solid polypropylene wheel with hardness 60±5 Shore D | Axle hole: 20 mm | Hub length: mm | Long floor drive, for acidic environment, low wear off, low rolling resistance

## Product information

- Article code 2-764 ISO
- SKU 59219
- EAN 3838461592195



## Product description

standard Wheel with roller bearing and solid polypropylene wheel with hardness 60±5 Shore D

Wheel diameter x width: 200 x 50 mm

Axle hole: 20 mm

Hub length: mm

### Approved and tested load capacity

Dynamic 250 kg

Static 310 kg

### Temperature range:

Continuous operation: -20 | +60°C

Short (10 min) exposure: /°C

### Advantages of this Long floor drive wheel:

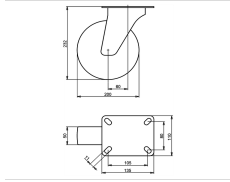
- ✓ acidic environment
- ✓ wear off
- ✓ rolling resistance

## LIV SYSTEMS standard wheel + solid polypropylene wheel Ø200 x W50mm for 250kg Prod ID: 66721

ID 66721: standard Wheel with roller bearing and solid polypropylene wheel with hardness 60±5 Shore D | Axle hole: 20 mm | Hub length: mm | Long floor drive, for acidic environment, low wear off, low rolling resistance

## Product information

- Article code 2-754 ISO
- SKU 66721
- EAN 3838461667213



## Product description

standard Swivel castor with an overall height of 232 mm

Wheel diameter x width: 200 x 50 mm

Top plate with 4 mounting holes of 11 mm, mounting hole distance 105x80 mm and top plate outer dimensions: 135x110 mm

Wheel with plain bearing and solid polypropylene wheel with hardness 60±5 Shore D.

### Approved and tested load capacity

Dynamic 250 kg

Static 310 kg

### Temperature range:

Continuous operation: -20 | +60°C

Short (10 min) exposure: /°C

### Advantages of this Long floor drive Swivel castor:

- ✓ acidic environment
- ✓ wear off
- ✓ rolling resistance

## LIV SYSTEMS standard Swivel castor + solid polypropylene wheel Ø200 x W50mm for 250kg Prod ID: 60812

ID 60812: Castor overall height 232 mm | 4 mounting holes with distance 105x80 mm | Wheel with plain bearing and solid polypropylene wheel with hardness 60±5 Shore D | Long floor drive, for acidic environment, low wear off, low rolling resistance

## Product information

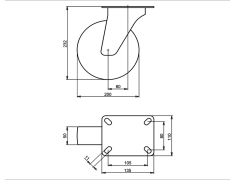
- Article code 2-674 ISO
- SKU 60812
- EAN 3838461608124

## Specifications

The result of our quality is maximum performance!

[Close](#)

[Close](#)



## Product description

standard Swivel castor with an overall height of 232 mm

Wheel diameter x width: 200 x 50 mm

Top plate with 4 mounting holes of 11 mm, mounting hole distance 105x80 mm and top plate outer dimensions: 135x110 mm

Wheel with roller bearing and solid polypropylene wheel with hardness 60±5 Shore D.

### Approved and tested load capacity

Dynamic 250 kg

Static 310 kg

### Temperature range:

Continuous operation: -20 | +60°C

Short (10 min) exposure: /°C

### Advantages of this Long floor drive Swivel castor:

- ✓ acidic environment
- ✓ wear off
- ✓ rolling resistance

## LIV SYSTEMS standard Swivel castor + solid polypropylene wheel Ø200 x W50mm for 250kg Prod ID: 60803

ID 60803: Castor overall height 232 mm | 4 mounting holes with distance 105x80 mm | Wheel with roller bearing and solid polypropylene wheel with hardness 60±5 Shore D | Long floor drive, for acidic environment, low wear off, low rolling resistance

## Product information

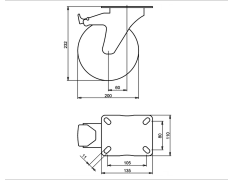
- Article code 2-664 ISO
- SKU 60803
- EAN 3838461608032

## Specifications

The result of our quality is maximum performance!

[Close](#)

[Close](#)



## Product description

standard Swivel castor with brake with an overall height of 232 mm

Wheel diameter x width: 200 x 50 mm

Top plate with 4 mounting holes of 11 mm, mounting hole distance 105x80 mm and top plate outer dimensions: 135x110 mm

Wheel with plain bearing and solid polypropylene wheel with hardness 60±5 Shore D

the double brake system, brakes the turning of the wheel and the swivel rotation.

### Approved and tested load capacity

Dynamic 250 kg

Static 310 kg

### Temperature range:

Continuous operation: -20 | +60°C

Short (10 min) exposure: /°C

### Advantages of this Long floor drive Swivel castor with brake:

- ✓ acidic environment
- ✓ wear off
- ✓ rolling resistance

## LIV SYSTEMS standard Swivel castor with brake + solid polypropylene wheel Ø200 x W50mm for 250kg Prod ID: 30574

ID 30574: Castor overall height 232 mm | 4 mounting holes with distance 105x80 mm | Wheel with plain bearing and solid polypropylene wheel with hardness 60±5 Shore D | The double brake system, brakes the turning of the wheel and the swivel rotation. | Lo

## Product information

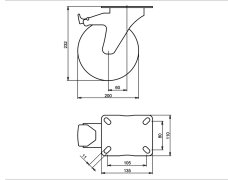
- Article code 2-687 A
- SKU 30574
- EAN 3838461305740

## Specifications

The result of our quality is maximum performance!

[Close](#)

[Close](#)



## Product description

standard Swivel castor with brake with an overall height of 232 mm

Wheel diameter x width: 200 x 50 mm

Top plate with 4 mounting holes of 11 mm, mounting hole distance 105x80 mm and top plate outer dimensions: 135x110 mm

Wheel with roller bearing and solid polypropylene wheel with hardness 60±5 Shore D

the double brake system, brakes the turning of the wheel and the swivel rotation.

### Approved and tested load capacity

Dynamic 250 kg

Static 310 kg

### Temperature range:

Continuous operation: -20 | +60°C

Short (10 min) exposure: /°C

### Advantages of this Long floor drive Swivel castor with brake:

- ✓ acidic environment
- ✓ wear off
- ✓ rolling resistance

## LIV SYSTEMS standard Swivel castor with brake + solid polypropylene wheel Ø200 x W50mm for 250kg Prod ID: 30573

ID 30573: Castor overall height 232 mm | 4 mounting holes with distance 105x80 mm | Wheel with roller bearing and solid polypropylene wheel with hardness 60±5 Shore D | The double brake system, brakes the turning of the wheel and the swivel rotation. | L

## Product information

- Article code 2-726 A
- SKU 30573
- EAN 3838461305733

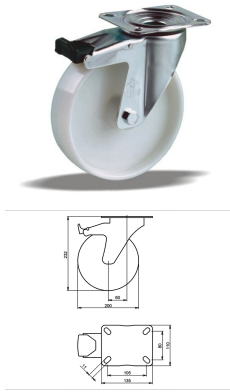
## Specifications

The result of our quality is maximum performance!

[Close](#)

[Close](#)





## Product description

standard Swivel castor with brake with an overall height of 232 mm  
 Wheel diameter x width: 200 x 50 mm  
 Top plate with 4 mounting holes of 11 mm, mounting hole distance 105x80 mm and top plate outer dimensions: 135x110 mm  
 Wheel with plain bearing and solid polypropylene wheel with hardness 60±5 Shore D  
 the double brake system, brakes the turning of the wheel and the swivel rotation.

### Approved and tested load capacity

Dynamic 250 kg  
 Static 310 kg

### Temperature range:

Continuous operation: -20 | +60°C  
 Short (10 min) exposure: /°C

### Advantages of this Long floor drive Swivel castor with brake:

- ✓ acidic environment
- ✓ wear off
- ✓ rolling resistance

## LIV SYSTEMS standard Swivel castor with brake + solid polypropylene wheel Ø200 x W50mm for 250kg Prod ID: 30683

ID 30683: Castor overall height 232 mm | 4 mounting holes with distance 105x80 mm | Wheel with plain bearing and solid polypropylene wheel with hardness 60±5 Shore D | The double brake system, brakes the turning of the wheel and the swivel rotation. | Lo

## Product information

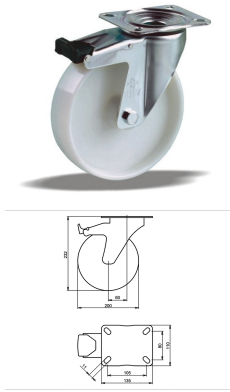
- Article code 2-687 A
- SKU 30683
- EAN 3838461306839

## Specifications

The result of our quality is maximum performance!

[Close](#)

[Close](#)



## Product description

standard Swivel castor with brake with an overall height of 232 mm  
 Wheel diameter x width: 200 x 50 mm  
 Top plate with 4 mounting holes of 11 mm, mounting hole distance 105x80 mm and top plate outer dimensions: 135x110 mm  
 Wheel with roller bearing and solid polypropylene wheel with hardness 60±5 Shore D  
 the double brake system, brakes the turning of the wheel and the swivel rotation.

### Approved and tested load capacity

Dynamic 250 kg  
 Static 310 kg

### Temperature range:

Continuous operation: -20 | +60°C  
 Short (10 min) exposure: /°C

### Advantages of this Long floor drive Swivel castor with brake:

- ✓ acidic environment
- ✓ wear off
- ✓ rolling resistance

## LIV SYSTEMS standard Swivel castor with brake + solid polypropylene wheel Ø200 x W50mm for 250kg Prod ID: 30675

ID 30675: Castor overall height 232 mm | 4 mounting holes with distance 105x80 mm | Wheel with roller bearing and solid polypropylene wheel with hardness 60±5 Shore D | The double brake system, brakes the turning of the wheel and the swivel rotation. | L

## Product information

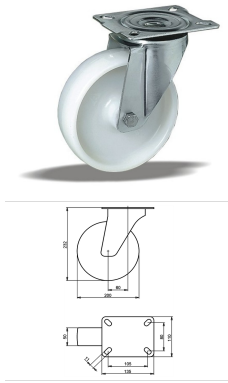
- Article code 2-726 A
- SKU 30675
- EAN 3838461306754

## Specifications

The result of our quality is maximum performance!

[Close](#)

[Close](#)



## Product description

standard Swivel castor with an overall height of 232 mm

Wheel diameter x width: 200 x 50 mm

Top plate with 4 mounting holes of 11 mm, mounting hole distance 105x80 mm and top plate outer dimensions: 135x110 mm

Wheel with plain bearing and solid polypropylene wheel with hardness 60±5 Shore D.

### Approved and tested load capacity

Dynamic 250 kg

Static 310 kg

### Temperature range:

Continuous operation: -20 | +60°C

Short (10 min) exposure: /°C

### Advantages of this Long floor drive Swivel castor:

- ✓ acidic environment
- ✓ wear off
- ✓ rolling resistance

## LIV SYSTEMS standard Swivel castor + solid polypropylene wheel Ø200 x W50mm for 250kg Prod ID: 66856

ID 66856: Castor overall height 232 mm | 4 mounting holes with distance 105x80 mm | Wheel with plain bearing and solid polypropylene wheel with hardness 60±5 Shore D | Long floor drive, for acidic environment, low wear off, low rolling resistance

## Product information

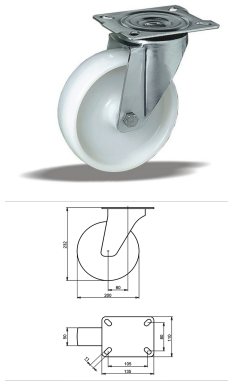
- Article code 2-674 ISO
- SKU 66856
- EAN 3838461668562

## Specifications

The result of our quality is maximum performance!

[Close](#)

[Close](#)



## Product description

standard Swivel castor with an overall height of 232 mm

Wheel diameter x width: 200 x 50 mm

Top plate with 4 mounting holes of 11 mm, mounting hole distance 105x80 mm and top plate outer dimensions: 135x110 mm

Wheel with roller bearing and solid polypropylene wheel with hardness 60±5 Shore D.

### Approved and tested load capacity

Dynamic 250 kg

Static 310 kg

### Temperature range:

Continuous operation: -20 | +60°C

Short (10 min) exposure: /°C

### Advantages of this Long floor drive Swivel castor:

- ✓ acidic environment
- ✓ wear off
- ✓ rolling resistance

## LIV SYSTEMS standard Swivel castor + solid polypropylene wheel Ø200 x W50mm for 250kg Prod ID: 66740

ID 66740: Castor overall height 232 mm | 4 mounting holes with distance 105x80 mm | Wheel with roller bearing and solid polypropylene wheel with hardness 60±5 Shore D | Long floor drive, for acidic environment, low wear off, low rolling resistance

## Product information

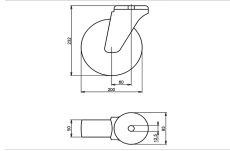
- Article code 2-664 ISO
- SKU 66740
- EAN 3838461667404

## Specifications

The result of our quality is maximum performance!

[Close](#)

[Close](#)



## Product description

standard Swivel castor with an overall height of 232 mm

Wheel diameter x width: 200 x 50 mm

Top plate with 4 mounting holes of 12,5 mm, mounting hole distance #\$\$ mm and top plate outer dimensions: 93 mm

Wheel with plain bearing and solid polypropylene wheel with hardness 60±5 Shore D.

### Approved and tested load capacity

Dynamic 250 kg

Static 310 kg

### Temperature range:

Continuous operation: -20 | +60°C

Short (10 min) exposure: /°C

### Advantages of this Long floor drive Swivel castor:

- ✓ acidic environment
- ✓ wear off
- ✓ rolling resistance

## LIV SYSTEMS standard Swivel castor + solid polypropylene wheel Ø200 x W50mm for 250kg Prod ID: 34305

ID 34305: Castor overall height 232 mm | 4 mounting holes with distance #\$\$ mm | Wheel with plain bearing and solid polypropylene wheel with hardness 60±5 Shore D | Long floor drive, for acidic environment, low wear off, low rolling resistance

## Product information

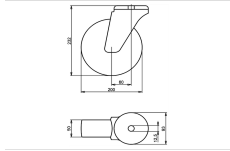
- Article code 2-769 L12
- SKU 34305
- EAN 3838461343056

## Specifications

The result of our quality is maximum performance!

[Close](#)

[Close](#)



## Product description

standard Swivel castor with an overall height of 232 mm

Wheel diameter x width: 200 x 50 mm

Top plate with 4 mounting holes of 12,5 mm, mounting hole distance #\$\$% mm and top plate outer dimensions: 93 mm

Wheel with roller bearing and solid polypropylene wheel with hardness 60±5 Shore D.

### Approved and tested load capacity

Dynamic 250 kg

Static 310 kg

### Temperature range:

Continuous operation: -20 | +60°C

Short (10 min) exposure: /°C

### Advantages of this Long floor drive Swivel castor:

- ✓ acidic environment
- ✓ wear off
- ✓ rolling resistance

## LIV SYSTEMS standard Swivel castor + solid polypropylene wheel Ø200 x W50mm for 250kg Prod ID: 34303

ID 34303: Castor overall height 232 mm | 4 mounting holes with distance #\$\$% mm | Wheel with roller bearing and solid polypropylene wheel with hardness 60±5 Shore D | Long floor drive, for acidic environment, low wear off, low rolling resistance

## Product information

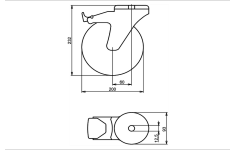
- Article code 2-759 L12
- SKU 34303
- EAN 3838461343032

## Specifications

The result of our quality is maximum performance!

[Close](#)

[Close](#)



## Product description

standard Swivel castor with brake with an overall height of 232 mm  
 Wheel diameter x width: 200 x 50 mm  
 Top plate with 4 mounting holes of 12,5 mm, mounting hole distance #\$\$ mm and top plate outer dimensions: 93 mm  
 Wheel with plain bearing and solid polypropylene wheel with hardness 60±5 Shore D  
 the double brake system, brakes the turning of the wheel and the swivel rotation.

### Approved and tested load capacity

Dynamic 250 kg  
 Static 310 kg

### Temperature range:

Continous operation: -20 | +60°C  
 Short (10 min) exposure: /°C

### Advantages of this Long floor drive Swivel castor with brake:

- ✓ acidic environment
- ✓ wear off
- ✓ rolling resistance

## LIV SYSTEMS standard Swivel castor with brake + solid polypropylene wheel Ø200 x W50mm for 250kg Prod ID: 34574

ID 34574: Castor overall height 232 mm | 4 mounting holes with distance #\$\$ mm | Wheel with plain bearing and solid polypropylene wheel with hardness 60±5 Shore D | The double brake system, brakes the turning of the wheel and the swivel rotation. | Long

## Product information

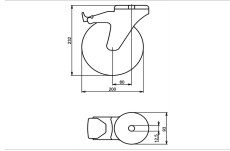
- Article code 2-799 L12
- SKU 34574
- EAN 3838461345746

## Specifications

The result of our quality is maximum performance!

[Close](#)

[Close](#)



## Product description

standard Swivel castor with brake with an overall height of 232 mm  
 Wheel diameter x width: 200 x 50 mm  
 Top plate with 4 mounting holes of 12,5 mm, mounting hole distance #\$\$ mm and top plate outer dimensions: 93 mm  
 Wheel with roller bearing and solid polypropylene wheel with hardness 60±5 Shore D  
 the double brake system, brakes the turning of the wheel and the swivel rotation.

### Approved and tested load capacity

Dynamic 250 kg  
 Static 310 kg

### Temperature range:

Continuous operation: -20 | +60°C  
 Short (10 min) exposure: /°C

### Advantages of this Long floor drive Swivel castor with brake:

- ✓ acidic environment
- ✓ wear off
- ✓ rolling resistance

## LIV SYSTEMS standard Swivel castor with brake + solid polypropylene wheel Ø200 x W50mm for 250kg Prod ID: 34573

ID 34573: Castor overall height 232 mm | 4 mounting holes with distance #\$\$ mm | Wheel with roller bearing and solid polypropylene wheel with hardness 60±5 Shore D | The double brake system, brakes the turning of the wheel and the swivel rotation. | Long

## Product information

- Article code 2-792 L12
- SKU 34573
- EAN 3838461345739

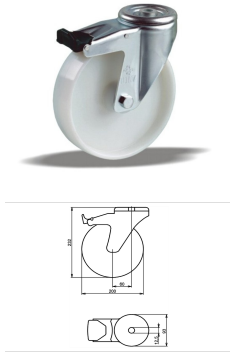
## Specifications

The result of our quality is maximum performance!

[Close](#)

[Close](#)





## Product description

standard Swivel castor with brake with an overall height of 232 mm  
 Wheel diameter x width: 200 x 50 mm  
 Top plate with 4 mounting holes of 12,5 mm, mounting hole distance #\$\$ mm and top plate outer dimensions: 93 mm  
 Wheel with plain bearing and solid polypropylene wheel with hardness 60±5 Shore D  
 the double brake system, brakes the turning of the wheel and the swivel rotation.

### Approved and tested load capacity

Dynamic 250 kg  
 Static 310 kg

### Temperature range:

Continious operation: -20 | +60°C  
 Short (10 min) exposure: /°C

### Advantages of this Long floor drive Swivel castor with brake:

- ✓ acidic environment
- ✓ wear off
- ✓ rolling resistance

## LIV SYSTEMS standard Swivel castor with brake + solid polypropylene wheel Ø200 x W50mm for 250kg Prod ID: 34623

ID 34623: Castor overall height 232 mm | 4 mounting holes with distance #\$\$ mm | Wheel with plain bearing and solid polypropylene wheel with hardness 60±5 Shore D | The double brake system, brakes the turning of the wheel and the swivel rotation. | Long

## Product information

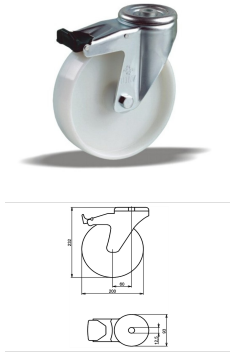
- Article code 2-799 L12
- SKU 34623
- EAN 3838461346231

## Specifications

The result of our quality is maximum performance!

[Close](#)

[Close](#)



## Product description

standard Swivel castor with brake with an overall height of 232 mm  
 Wheel diameter x width: 200 x 50 mm  
 Top plate with 4 mounting holes of 12,5 mm, mounting hole distance #\$\$ mm and top plate outer dimensions: 93 mm  
 Wheel with roller bearing and solid polypropylene wheel with hardness 60±5 Shore D  
 the double brake system, brakes the turning of the wheel and the swivel rotation.

### Approved and tested load capacity

Dynamic 250 kg  
 Static 310 kg

### Temperature range:

Continuous operation: -20 | +60°C  
 Short (10 min) exposure: /°C

### Advantages of this Long floor drive Swivel castor with brake:

- ✓ acidic environment
- ✓ wear off
- ✓ rolling resistance

## LIV SYSTEMS standard Swivel castor with brake + solid polypropylene wheel Ø200 x W50mm for 250kg Prod ID: 34605

ID 34605: Castor overall height 232 mm | 4 mounting holes with distance #\$\$ mm | Wheel with roller bearing and solid polypropylene wheel with hardness 60±5 Shore D | The double brake system, brakes the turning of the wheel and the swivel rotation. | Long

## Product information

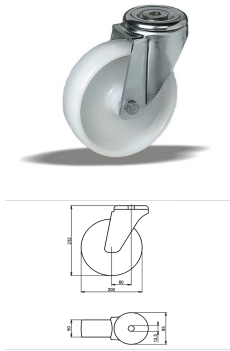
- Article code 2-792 L12
- SKU 34605
- EAN 3838461346057

## Specifications

The result of our quality is maximum performance!

[Close](#)

[Close](#)



## Product description

standard Swivel castor with an overall height of 232 mm

Wheel diameter x width: 200 x 50 mm

Top plate with 4 mounting holes of 12,5 mm, mounting hole distance #\$\$ mm and top plate outer dimensions: 93 mm

Wheel with plain bearing and solid polypropylene wheel with hardness 60±5 Shore D.

### Approved and tested load capacity

Dynamic 250 kg

Static 310 kg

### Temperature range:

Continuous operation: -20 | +60°C

Short (10 min) exposure: /°C

### Advantages of this Long floor drive Swivel castor:

- ✓ acidic environment
- ✓ wear off
- ✓ rolling resistance

## LIV SYSTEMS standard Swivel castor + solid polypropylene wheel Ø200 x W50mm for 250kg Prod ID: 34373

ID 34373: Castor overall height 232 mm | 4 mounting holes with distance #\$\$ mm | Wheel with plain bearing and solid polypropylene wheel with hardness 60±5 Shore D | Long floor drive, for acidic environment, low wear off, low rolling resistance

## Product information

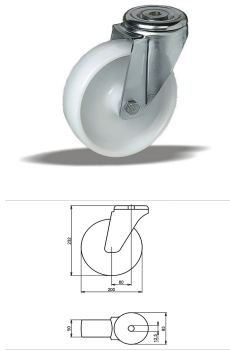
- Article code 2-769 L12
- SKU 34373
- EAN 3838461343735

## Specifications

The result of our quality is maximum performance!

[Close](#)

[Close](#)



## Product description

standard Swivel castor with an overall height of 232 mm

Wheel diameter x width: 200 x 50 mm

Top plate with 4 mounting holes of 12,5 mm, mounting hole distance #\$\$% mm and top plate outer dimensions: 93 mm

Wheel with roller bearing and solid polypropylene wheel with hardness 60±5 Shore D.

### Approved and tested load capacity

Dynamic 250 kg

Static 310 kg

### Temperature range:

Continuous operation: -20 | +60°C

Short (10 min) exposure: /°C

### Advantages of this Long floor drive Swivel castor:

- ✓ acidic environment
- ✓ wear off
- ✓ rolling resistance

## LIV SYSTEMS standard Swivel castor + solid polypropylene wheel Ø200 x W50mm for 250kg Prod ID: 34355

ID 34355: Castor overall height 232 mm | 4 mounting holes with distance #\$\$% mm | Wheel with roller bearing and solid polypropylene wheel with hardness 60±5 Shore D | Long floor drive, for acidic environment, low wear off, low rolling resistance

## Product information

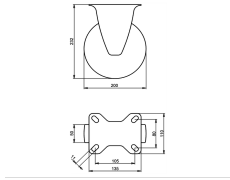
- Article code 2-759 L12
- SKU 34355
- EAN 3838461343551

## Specifications

The result of our quality is maximum performance!

[Close](#)

[Close](#)



## Product description

standard Fixed castor with an overall height of 232 mm

Wheel diameter x width: 200 x 50 mm

Top plate with 4 mounting holes of 11 mm, mounting hole distance 105x80 mm and top plate outer dimensions: 135x110 mm

Wheel with plain bearing and solid polypropylene wheel with hardness 60±5 Shore D.

### Approved and tested load capacity

Dynamic 250 kg

Static 310 kg

### Temperature range:

Continuous operation: -20 | +60°C

Short (10 min) exposure: /°C

### Advantages of this Long floor drive Fixed castor:

- ✓ acidic environment
- ✓ wear off
- ✓ rolling resistance

## LIV SYSTEMS standard Fixed castor + solid polypropylene wheel Ø200 x W50mm for 250kg Prod ID: 60817

ID 60817: Castor overall height 232 mm | 4 mounting holes with distance 105x80 mm | Wheel with plain bearing and solid polypropylene wheel with hardness 60±5 Shore D | Long floor drive, for acidic environment, low wear off, low rolling resistance

## Product information

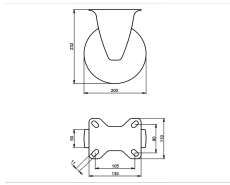
- Article code 2-679 ISO
- SKU 60817
- EAN 3838461608179

## Specifications

The result of our quality is maximum performance!

[Close](#)

[Close](#)



## Product description

standard Fixed castor with an overall height of 232 mm

Wheel diameter x width: 200 x 50 mm

Top plate with 4 mounting holes of 11 mm, mounting hole distance 105x80 mm and top plate outer dimensions: 135x110 mm

Wheel with roller bearing and solid polypropylene wheel with hardness 60±5 Shore D.

### Approved and tested load capacity

Dynamic 250 kg

Static 310 kg

### Temperature range:

Continuous operation: -20 | +60°C

Short (10 min) exposure: /°C

### Advantages of this Long floor drive Fixed castor:

- ✓ acidic environment
- ✓ wear off
- ✓ rolling resistance

## LIV SYSTEMS standard Fixed castor + solid polypropylene wheel Ø200 x W50mm for 250kg Prod ID: 60807

ID 60807: Castor overall height 232 mm | 4 mounting holes with distance 105x80 mm | Wheel with roller bearing and solid polypropylene wheel with hardness 60±5 Shore D | Long floor drive, for acidic environment, low wear off, low rolling resistance

## Product information

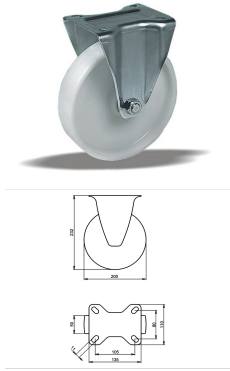
- Article code 2-669 ISO
- SKU 60807
- EAN 3838461608070

## Specifications

The result of our quality is maximum performance!

[Close](#)

[Close](#)



## Product description

standard Fixed castor with an overall height of 232 mm

Wheel diameter x width: 200 x 50 mm

Top plate with 4 mounting holes of 11 mm, mounting hole distance 105x80 mm and top plate outer dimensions: 135x110 mm

Wheel with plain bearing and solid polypropylene wheel with hardness 60±5 Shore D.

### Approved and tested load capacity

Dynamic 250 kg

Static 310 kg

### Temperature range:

Continuous operation: -20 | +60°C

Short (10 min) exposure: /°C

### Advantages of this Long floor drive Fixed castor:

- ✓ acidic environment
- ✓ wear off
- ✓ rolling resistance

## LIV SYSTEMS standard Fixed castor + solid polypropylene wheel Ø200 x W50mm for 250kg Prod ID: 67023

ID 67023: Castor overall height 232 mm | 4 mounting holes with distance 105x80 mm | Wheel with plain bearing and solid polypropylene wheel with hardness 60±5 Shore D | Long floor drive, for acidic environment, low wear off, low rolling resistance

## Product information

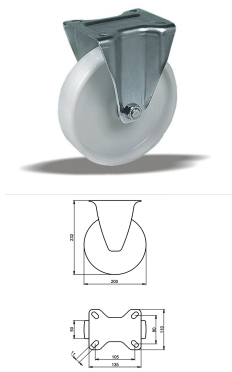
- Article code 2-679 ISO
- SKU 67023
- EAN 3838461670237

## Specifications

The result of our quality is maximum performance!

[Close](#)

[Close](#)



## Product description

standard Fixed castor with an overall height of 232 mm

Wheel diameter x width: 200 x 50 mm

Top plate with 4 mounting holes of 11 mm, mounting hole distance 105x80 mm and top plate outer dimensions: 135x110 mm

Wheel with roller bearing and solid polypropylene wheel with hardness 60±5 Shore D.

### Approved and tested load capacity

Dynamic 250 kg

Static 310 kg

### Temperature range:

Continuous operation: -20 | +60°C

Short (10 min) exposure: 1°C

### Advantages of this Long floor drive Fixed castor:

- ✓ acidic environment
- ✓ wear off
- ✓ rolling resistance

## LIV SYSTEMS standard Fixed castor + solid polypropylene wheel Ø200 x W50mm for 250kg Prod ID: 67008

ID 67008: Castor overall height 232 mm | 4 mounting holes with distance 105x80 mm | Wheel with roller bearing and solid polypropylene wheel with hardness 60±5 Shore D | Long floor drive, for acidic environment, low wear off, low rolling resistance

## Product information

- Article code 2-669 ISO
- SKU 67008
- EAN 3838461670084

**Алматы** (7273)495-231  
**Ангарск** (3955)60-70-56  
**Архангельск** (8182)63-90-72  
**Астрахань** (8512)99-46-04  
**Барнаул** (3852)73-04-60  
**Белгород** (4722)40-23-64  
**Благовещенск** (4162)22-76-07  
**Брянск** (4832)59-03-52  
**Владивосток** (423)249-28-31  
**Владикавказ** (8672)28-90-48  
**Владимир** (4922)49-43-18  
**Волгоград** (844)278-03-48  
**Вологда** (8172)26-41-59  
**Воронеж** (473)204-51-73  
**Екатеринбург** (343)384-55-89

**Иваново** (4932)77-34-06  
**Ижевск** (3412)26-03-58  
**Иркутск** (395)279-98-46  
**Казань** (843)206-01-48  
**Калининград** (4012)72-03-81  
**Калуга** (4842)92-23-67  
**Кемерово** (3842)65-04-62  
**Киров** (8332)68-02-04  
**Коломна** (4966)23-41-49  
**Кострома** (4942)77-07-48  
**Краснодар** (861)203-40-90  
**Красноярск** (391)204-63-61  
**Курск** (4712)77-13-04  
**Курган** (3522)50-90-47  
**Липецк** (4742)52-20-81

**Магнитогорск** (3519)55-03-13  
**Москва** (495)268-04-70  
**Мурманск** (8152)59-64-93  
**Набережные Челны** (8552)20-53-41  
**Нижний Новгород** (831)429-08-12  
**Новокузнецк** (3843)20-46-81  
**Ноябрьск** (3496)41-32-12  
**Новосибирск** (383)227-86-73  
**Омск** (3812)21-46-40  
**Орел** (4862)44-53-42  
**Оренбург** (3532)37-68-04  
**Пенза** (8412)22-31-16  
**Петрозаводск** (8142)55-98-37  
**Псков** (8112)59-10-37  
**Пермь** (342)205-81-47

**Ростов-на-Дону** (863)308-18-15  
**Рязань** (4912)46-61-64  
**Самара** (846)206-03-16  
**Санкт-Петербург** (812)309-46-40  
**Саратов** (845)249-38-78  
**Севастополь** (8692)22-31-93  
**Саранск** (8342)22-96-24  
**Симферополь** (3652)67-13-56  
**Смоленск** (4812)29-41-54  
**Сочи** (862)225-72-31  
**Ставрополь** (8652)20-65-13  
**Сургут** (3462)77-98-35  
**Сыктывкар** (8212)25-95-17  
**Тамбов** (4752)50-40-97  
**Тверь** (4822)63-31-35

**Тольятти** (8482)63-91-07  
**Томск** (3822)98-41-53  
**Тула** (4872)33-79-87  
**Тюмень** (3452)66-21-18  
**Ульяновск** (8422)24-23-59  
**Улан-Удэ** (3012)59-97-51  
**Уфа** (347)229-48-12  
**Хабаровск** (4212)92-98-04  
**Чебоксары** (8352)28-53-07  
**Челябинск** (351)202-03-61  
**Череповец** (8202)49-02-64  
**Чита** (3022)38-34-83  
**Якутск** (4112)23-90-97  
**Ярославль** (4852)69-52-93

Россия +7(495)268-04-70

Казахстан +7(7172)727-132

Киргизия +996(312)96-26-47

<https://liv.nt-rt.ru/> || [vis@nt-rt.ru](mailto:vis@nt-rt.ru)