

Алматы (7273)495-231
Ангарск (3955)60-70-56
Архангельск (8182)63-90-72
Астрахань (8512)99-46-04
Барнаул (3852)73-04-60
Белгород (4722)40-23-64
Благовещенск (4162)22-76-07
Брянск (4832)59-03-52
Владивосток (423)249-28-31
Владикавказ (8672)28-90-48
Владимир (4922)49-43-18
Волгоград (844)278-03-48
Вологда (8172)26-41-59
Воронеж (473)204-51-73
Екатеринбург (343)384-55-89

Иваново (4932)77-34-06
Ижевск (3412)26-03-58
Иркутск (395)279-98-46
Казань (843)206-01-48
Калининград (4012)72-03-81
Калуга (4842)92-23-67
Кемерово (3842)65-04-62
Киров (8332)68-02-04
Коломна (4966)23-41-49
Кострома (4942)77-07-48
Краснодар (861)203-40-90
Красноярск (391)204-63-61
Курск (4712)77-13-04
Курган (3522)50-90-47
Липецк (4742)52-20-81

Магнитогорск (3519)55-03-13
Москва (495)268-04-70
Мурманск (8152)59-64-93
Набережные Челны (8552)20-53-41
Нижний Новгород (831)429-08-12
Новокузнецк (3843)20-46-81
Ноябрьск (3496)41-32-12
Новосибирск (383)227-86-73
Омск (3812)21-46-40
Орел (4862)44-53-42
Оренбург (3532)37-68-04
Пенза (8412)22-31-16
Петрозаводск (8142)55-98-37
Псков (8112)59-10-37
Пермь (342)205-81-47

Ростов-на-Дону (863)308-18-15
Рязань (4912)46-61-64
Самара (846)206-03-16
Санкт-Петербург (812)309-46-40
Саратов (845)249-38-78
Севастополь (8692)22-31-93
Саранск (8342)22-96-24
Симферополь (3652)67-13-56
Смоленск (4812)29-41-54
Сочи (862)225-72-31
Ставрополь (8652)20-65-13
Сургут (3462)77-98-35
Сыктывкар (8212)25-95-17
Тамбов (4752)50-40-97
Тверь (4822)63-31-35

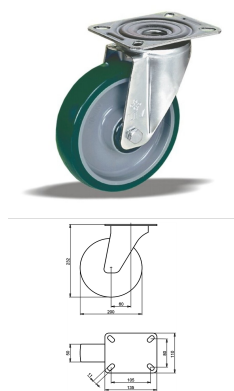
Тольятти (8482)63-91-07
Томск (3822)98-41-53
Тула (4872)33-79-87
Тюмень (3452)66-21-18
Ульяновск (8422)24-23-59
Улан-Удэ (3012)59-97-51
Уфа (347)229-48-12
Хабаровск (4212)92-98-04
Чебоксары (8352)28-53-07
Челябинск (351)202-03-61
Череповец (8202)49-02-64
Чита (3022)38-34-83
Якутск (4112)23-90-97
Ярославль (4852)69-52-93

Россия +7(495)268-04-70

Казахстан +7(7172)727-132

Киргизия +996(312)96-26-47

<https://liv.nt-rt.ru/> || vis@nt-rt.ru



Product description

standard Swivel castor with an overall height of 232 mm

Wheel diameter x width: 200 x 50 mm

Top plate with 4 mounting holes of 11 mm, mounting hole distance 105x80 mm and top plate outer dimensions: 135x110 mm

Wheel with ball bearing and injection-moulded polyurethane with hardness 92 ° shore A on polyamide.

Approved and tested load capacity

Dynamic 300 kg

Static 370 kg

Temperature range:

Continuous operation: -25 | +55°C

Short (10 min) exposure: -30 | +55°C

Advantages of this Jump floor champion Swivel castor:

- ✓ stoney floor
- ✓ -proof
- ✓ high temperature differences

LIV SYSTEMS standard Swivel castor + injection-moulded polyurethane Ø200 x W50mm for 300kg Prod ID: 40533

ID 40533: Castor overall height 232 mm | 4 mounting holes with distance 105x80 mm | Wheel with ball bearing and injection-moulded polyurethane with hardness 92 ° shore

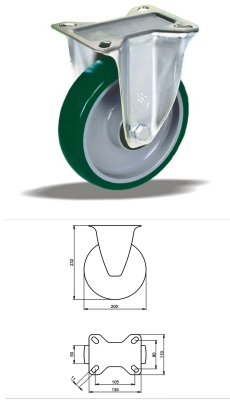
A | Jump floor champion, on stoney floor, cuts-proof, for high temperature difference

Product information

- Article code 2-052-40K
- SKU 40533
- EAN 3838461405334

Specifications

The result of our quality is maximum performance!



Product description

standard Fixed castor with an overall height of 232 mm

Wheel diameter x width: 200 x 50 mm

Top plate with 4 mounting holes of 11 mm, mounting hole distance 105x80 mm and top plate outer dimensions: 135x110 mm

Wheel with plain bearing and injection-moulded polyurethane with hardness 92 ° shore A on polyamide.

Approved and tested load capacity

Dynamic 300 kg

Static 370 kg

Temperature range:

Continuous operation: -20 | +80°C

Short (10 min) exposure: -40 | +100°C

Advantages of this Jump floor champion Fixed castor:

- ✓ stoney floor
- ✓-proof
- ✓ high temperature differences

LIV SYSTEMS standard Fixed castor + injection-moulded polyurethane Ø200 x W50mm for 300kg Prod ID: 40484

ID 40484: Castor overall height 232 mm | 4 mounting holes with distance 105x80 mm | Wheel with plain bearing and injection-moulded polyurethane with hardness 92 ° shore A | Jump floor champion, on stoney floor, cuts-proof, for high temperature differenc

Product information

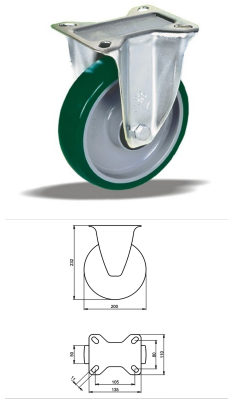
- Article code 2-051-40D
- SKU 40484
- EAN 3838461404849

Specifications

The result of our quality is maximum performance!

[Close](#)

[Close](#)



Product description

standard Fixed castor with an overall height of 232 mm

Wheel diameter x width: 200 x 50 mm

Top plate with 4 mounting holes of 11 mm, mounting hole distance 105x80 mm and top plate outer dimensions: 135x110 mm

Wheel with ball bearing and injection-moulded polyurethane with hardness 92 ° shore A on polyamide.

Approved and tested load capacity

Dynamic 300 kg

Static 370 kg

Temperature range:

Continuous operation: -20 | +80°C

Short (10 min) exposure: -40 | +100°C

Advantages of this Jump floor champion Fixed castor:

- ✓ stoney floor
- ✓-proof
- ✓ high temperature differences

LIV SYSTEMS standard Fixed castor + injection-moulded polyurethane Ø200 x W50mm for 300kg Prod ID: 40493

ID 40493: Castor overall height 232 mm | 4 mounting holes with distance 105x80 mm | Wheel with ball bearing and injection-moulded polyurethane with hardness 92 ° shore

A | Jump floor champion, on stoney floor, cuts-proof, for high temperature difference

Product information

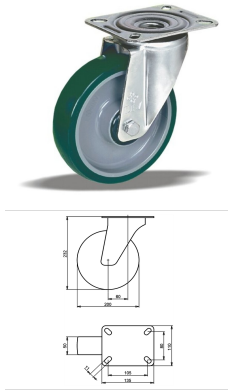
- Article code 2-051-40K
- SKU 40493
- EAN 3838461404931

Specifications

The result of our quality is maximum performance!

[Close](#)

[Close](#)



Product description

standard Swivel castor with an overall height of 232 mm

Wheel diameter x width: 200 x 50 mm

Top plate with 4 mounting holes of 11 mm, mounting hole distance 105x80 mm and top plate outer dimensions: 135x110 mm

Wheel with plain bearing and injection-moulded polyurethane with hardness 92 ° shore A on polyamide.

Approved and tested load capacity

Dynamic 300 kg

Static 370 kg

Temperature range:

Continuous operation: -25 | +55°C

Short (10 min) exposure: -30 | +55°C

Advantages of this Jump floor champion Swivel castor:

- ✓ stoney floor
- ✓-proof
- ✓ high temperature differences

LIV SYSTEMS standard Swivel castor + injection-moulded polyurethane Ø200 x W50mm for 300kg Prod ID: 40524

ID 40524: Castor overall height 232 mm | 4 mounting holes with distance 105x80 mm | Wheel with plain bearing and injection-moulded polyurethane with hardness 92 ° shore A | Jump floor champion, on stoney floor, cuts-proof, for high temperature differenc

Product information

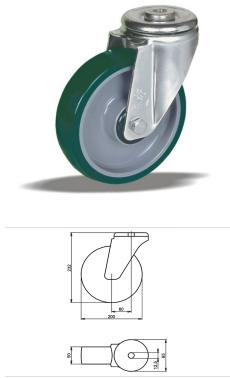
- Article code 2-052-40D
- SKU 40524
- EAN 3838461405242

Specifications

The result of our quality is maximum performance!

[Close](#)

[Close](#)



Product description

standard Swivel castor with an overall height of 232 mm

Wheel diameter x width: 200 x 50 mm

Top plate with 4 mounting holes of 12,5 mm, mounting hole distance #\$\$ mm and top plate outer dimensions: 93 mm

Wheel with plain bearing and injection-moulded polyurethane with hardness 92 ° shore A on polyamide.

Approved and tested load capacity

Dynamic 300 kg

Static 370 kg

Temperature range:

Continous operation: -20 | +80°C

Short (10 min) exposure: -40 | +100°C

Advantages of this Jump floor champion Swivel castor:

- ✓ stoney floor
- ✓-proof
- ✓ high temperature differences

LIV SYSTEMS standard Swivel castor + injection-moulded polyurethane Ø200 x W50mm for 300kg Prod ID: 40604

ID 40604: Castor overall height 232 mm | 4 mounting holes with distance #\$\$ mm | Wheel with plain bearing and injection-moulded polyurethane with hardness 92 ° shore A
| Jump floor champion, on stoney floor, cuts-proof, for high temperature differences

Product information

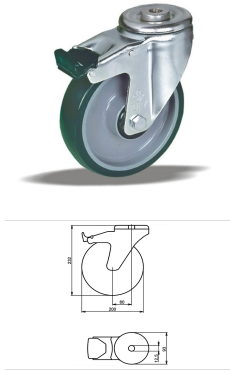
- Article code 2-054-40D
- SKU 40604
- EAN 3838461406041

Specifications

The result of our quality is maximum performance!

[Close](#)

[Close](#)



Product description

standard Swivel castor with brake with an overall height of 232 mm
 Wheel diameter x width: 200 x 50 mm
 Top plate with 4 mounting holes of 12,5 mm, mounting hole distance #\$\$ mm and top plate outer dimensions: 93 mm
 Wheel with plain bearing and injection-moulded polyurethane with hardness 92 ° shore A on polyamide
 the double brake system, brakes the turning of the wheel and the swivel rotation.

Approved and tested load capacity

Dynamic 300 kg
 Static 370 kg

Temperature range:

Continious operation: -20 | +80°C
 Short (10 min) exposure: -40 | +100°C

Advantages of this Jump floor champion Swivel castor with brake:

- ✓ stoney floor
- ✓-proof
- ✓ high temperature differences

LIV SYSTEMS standard Swivel castor with brake + injection-moulded polyurethane Ø200 x W50mm for 300kg Prod ID: 40644

ID 40644: Castor overall height 232 mm | 4 mounting holes with distance #\$\$ mm | Wheel with plain bearing and injection-moulded polyurethane with hardness 92 ° shore A
 | The double brake system, brakes the turning of the wheel and the swivel rotation. |

Product information

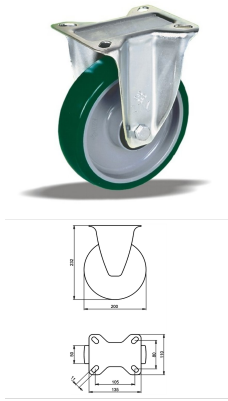
- Article code 2-055-40D
- SKU 40644
- EAN 3838461406447

Specifications

The result of our quality is maximum performance!

[Close](#)

[Close](#)



Product description

standard Fixed castor with an overall height of 232 mm

Wheel diameter x width: 200 x 50 mm

Top plate with 4 mounting holes of 11 mm, mounting hole distance 105x80 mm and top plate outer dimensions: 135x110 mm

Wheel with roller bearing and injection-moulded polyurethane with hardness 92 ° shore A on polyamide.

Approved and tested load capacity

Dynamic 300 kg

Static 370 kg

Temperature range:

Continuous operation: -20 | +80°C

Short (10 min) exposure: -40 | +100°C

Advantages of this Jump floor champion Fixed castor:

- ✓ stoney floor
- ✓-proof
- ✓ high temperature differences

LIV SYSTEMS standard Fixed castor + injection-moulded polyurethane Ø200 x W50mm for 300kg Prod ID: 40485

ID 40485: Castor overall height 232 mm | 4 mounting holes with distance 105x80 mm | Wheel with roller bearing and injection-moulded polyurethane with hardness 92 ° shore A | Jump floor champion, on stoney floor, cuts-proof, for high temperature differen

Product information

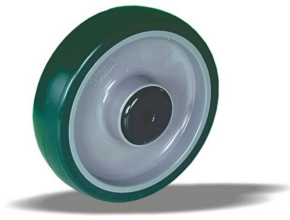
- Article code 2-051-40V
- SKU 40485
- EAN 3838461404856

Specifications

The result of our quality is maximum performance!

[Close](#)

[Close](#)



Product description

standard Wheel with plain bearing and injection-moulded polyurethane with hardness 92 ° shore A on polyamide

Wheel diameter x width: 200 x 50 mm

Axle hole: 12,5 mm

Hub length: 58 mm

Approved and tested load capacity

Dynamic 500 kg

Static 620 kg

Temperature range:

Continous operation: -25 | +55°C

Short (10 min) exposure: -30 | +55°C

Advantages of this Jump floor champion wheel:

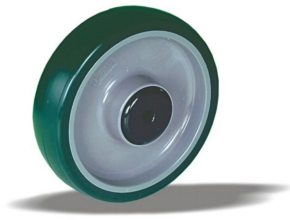
- ✓ stoney floor
- ✓-proof
- ✓ high temperature differences

LIV SYSTEMS standard wheel + injection-moulded polyurethane Ø200 x W50mm for 500kg Prod ID: 40444

ID 40444:standard Wheel with plain bearing and injection-moulded polyurethane with hardness 92 ° shore A on polyamide | Axle hole: 12,5 mm | Hub length: 58 mm | Jump floor champion, on stoney floor, cuts-proof, for high temperature differences

Product information

- Article code 2-050-40D
- SKU 40444
- EAN 3838461404443



Product description

standard Wheel with roller bearing and injection-moulded polyurethane with hardness 92 ° shore A on polyamide

Wheel diameter x width: 200 x 50 mm

Axle hole: 12,5 mm

Hub length: 58 mm

Approved and tested load capacity

Dynamic 500 kg

Static 620 kg

Temperature range:

Continous operation: -25 | +55°C

Short (10 min) exposure: -30 | +55°C

Advantages of this Jump floor champion wheel:

- ✓ stoney floor
- ✓-proof
- ✓ high temperature differences

LIV SYSTEMS standard wheel + injection-moulded polyurethane Ø200 x W50mm for 500kg Prod ID: 40445

ID 40445:standard Wheel with roller bearing and injection-moulded polyurethane with hardness 92 ° shore A on polyamide | Axle hole: 12,5 mm | Hub length: 58 mm | Jump floor champion, on stoney floor, cuts-proof, for high temperature differences

Product information

- Article code 2-050-40V
- SKU 40445
- EAN 3838461404450



Product description

standard Wheel with ball bearing and injection-moulded polyurethane with hardness 92 ° shore A on polyamide

Wheel diameter x width: 200 x 50 mm

Axle hole: 20 mm

Hub length: 58 mm

Approved and tested load capacity

Dynamic 500 kg

Static 620 kg

Temperature range:

Continuous operation: -25 | +55°C

Short (10 min) exposure: -30 | +55°C

Advantages of this Jump floor champion wheel:

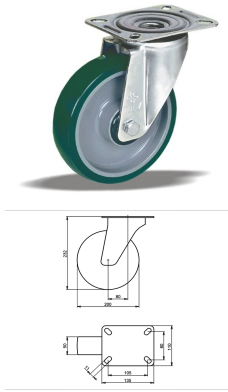
- ✓ stoney floor
- ✓-proof
- ✓ high temperature differences

LIV SYSTEMS standard wheel + injection-moulded polyurethane Ø200 x W50mm for 500kg Prod ID: 40453

ID 40453: standard Wheel with ball bearing and injection-moulded polyurethane with hardness 92 ° shore A on polyamide | Axle hole: 20 mm | Hub length: 58 mm | Jump floor champion, on stoney floor, cuts-proof, for high temperature differences

Product information

- Article code 2-050-40K
- SKU 40453
- EAN 3838461404535



Product description

standard Swivel castor with an overall height of 232 mm

Wheel diameter x width: 200 x 50 mm

Top plate with 4 mounting holes of 11 mm, mounting hole distance 105x80 mm and top plate outer dimensions: 135x110 mm

Wheel with roller bearing and injection-moulded polyurethane with hardness 92 ° shore A on polyamide.

Approved and tested load capacity

Dynamic 300 kg

Static 370 kg

Temperature range:

Continuous operation: -25 | +55°C

Short (10 min) exposure: -30 | +55°C

Advantages of this Jump floor champion Swivel castor:

- ✓ stoney floor
- ✓-proof
- ✓ high temperature differences

LIV SYSTEMS standard Swivel castor + injection-moulded polyurethane Ø200 x W50mm for 300kg Prod ID: 40525

ID 40525: Castor overall height 232 mm | 4 mounting holes with distance 105x80 mm | Wheel with roller bearing and injection-moulded polyurethane with hardness 92 ° shore A | Jump floor champion, on stoney floor, cuts-proof, for high temperature differen

Product information

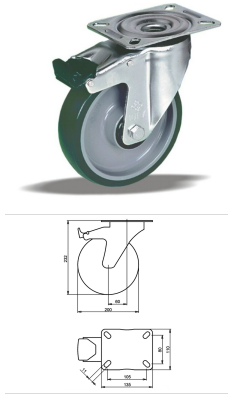
- Article code 2-052-40V
- SKU 40525
- EAN 3838461405259

Specifications

The result of our quality is maximum performance!

[Close](#)

[Close](#)



Product description

standard Swivel castor with brake with an overall height of 232 mm
 Wheel diameter x width: 200 x 50 mm
 Top plate with 4 mounting holes of 11 mm, mounting hole distance 105x80 mm and top plate outer dimensions: 135x110 mm
 Wheel with plain bearing and injection-moulded polyurethane with hardness 92 ° shore A on polyamide
 the double brake system, brakes the turning of the wheel and the swivel rotation.

Approved and tested load capacity

Dynamic 300 kg
 Static 370 kg

Temperature range:

Continuous operation: -25 | +55°C
 Short (10 min) exposure: -30 | +55°C

Advantages of this Jump floor champion Swivel castor with brake:

- ✓ stoney floor
- ✓-proof
- ✓ high temperature differences

LIV SYSTEMS standard Swivel castor with brake + injection-moulded polyurethane Ø200 x W50mm for 300kg Prod ID: 40564

ID 40564: Castor overall height 232 mm | 4 mounting holes with distance 105x80 mm | Wheel with plain bearing and injection-moulded polyurethane with hardness 92 ° shore A | The double brake system, brakes the turning of the wheel and the swivel rotation

Product information

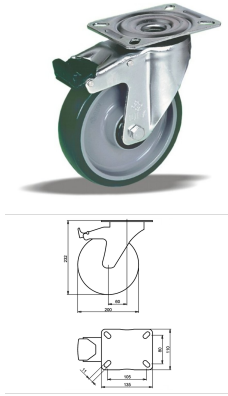
- Article code 2-053-40D
- SKU 40564
- EAN 3838461405648

Specifications

The result of our quality is maximum performance!

[Close](#)

[Close](#)



Product description

standard Swivel castor with brake with an overall height of 232 mm
 Wheel diameter x width: 200 x 50 mm
 Top plate with 4 mounting holes of 11 mm, mounting hole distance 105x80 mm and top plate outer dimensions: 135x110 mm
 Wheel with roller bearing and injection-moulded polyurethane with hardness 92 ° shore A on polyamide
 the double brake system, brakes the turning of the wheel and the swivel rotation.

Approved and tested load capacity

Dynamic 300 kg
 Static 370 kg

Temperature range:

Continuous operation: -25 | +55°C
 Short (10 min) exposure: -30 | +55°C

Advantages of this Jump floor champion Swivel castor with brake:

- ✓ stoney floor
- ✓-proof
- ✓ high temperature differences

LIV SYSTEMS standard Swivel castor with brake + injection-moulded polyurethane Ø200 x W50mm for 300kg Prod ID: 40565

ID 40565: Castor overall height 232 mm | 4 mounting holes with distance 105x80 mm | Wheel with roller bearing and injection-moulded polyurethane with hardness 92 ° shore A | The double brake system, brakes the turning of the wheel and the swivel rotatio

Product information

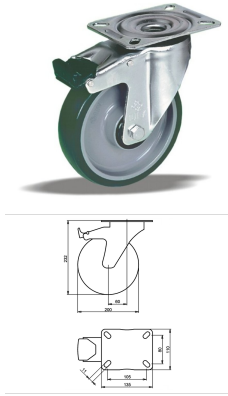
- Article code 2-053-40V
- SKU 40565
- EAN 3838461405655

Specifications

The result of our quality is maximum performance!

[Close](#)

[Close](#)



Product description

standard Swivel castor with brake with an overall height of 232 mm

Wheel diameter x width: 200 x 50 mm

Top plate with 4 mounting holes of 11 mm, mounting hole distance 105x80 mm and top plate outer dimensions: 135x110 mm

Wheel with ball bearing and injection-moulded polyurethane with hardness 92 ° shore A on polyamide

the double brake system, brakes the turning of the wheel and the swivel rotation.

Approved and tested load capacity

Dynamic 300 kg

Static 370 kg

Temperature range:

Continuous operation: -25 | +55°C

Short (10 min) exposure: -30 | +55°C

Advantages of this Jump floor champion Swivel castor with brake:

- ✓ stoney floor
- ✓-proof
- ✓ high temperature differences

LIV SYSTEMS standard Swivel castor with brake + injection-moulded polyurethane Ø200 x W50mm for 300kg Prod ID: 40573

ID 40573: Castor overall height 232 mm | 4 mounting holes with distance 105x80 mm | Wheel with ball bearing and injection-moulded polyurethane with hardness 92 ° shore A | The double brake system, brakes the turning of the wheel and the swivel rotation.

Product information

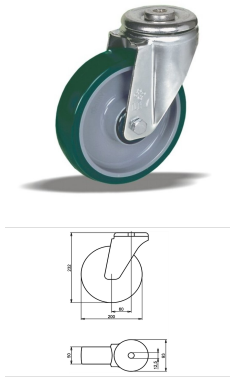
- Article code 2-053-40K
- SKU 40573
- EAN 3838461405730

Specifications

The result of our quality is maximum performance!

[Close](#)

[Close](#)



Product description

standard Swivel castor with an overall height of 232 mm

Wheel diameter x width: 200 x 50 mm

Top plate with 4 mounting holes of 12,5 mm, mounting hole distance #\$\$ mm and top plate outer dimensions: 93 mm

Wheel with plain bearing and injection-moulded polyurethane with hardness 92 ° shore A on polyamide.

Approved and tested load capacity

Dynamic 300 kg

Static 370 kg

Temperature range:

Continuous operation: -20 | +80°C

Short (10 min) exposure: -40 | +100°C

Advantages of this Jump floor champion Swivel castor:

- ✓ stoney floor
- ✓-proof
- ✓ high temperature differences

LIV SYSTEMS standard Swivel castor + injection-moulded polyurethane Ø200 x W50mm for 300kg Prod ID: 40613

ID 40613: Castor overall height 232 mm | 4 mounting holes with distance #\$\$ mm | Wheel with plain bearing and injection-moulded polyurethane with hardness 92 ° shore A
| Jump floor champion, on stoney floor, cuts-proof, for high temperature differences

Product information

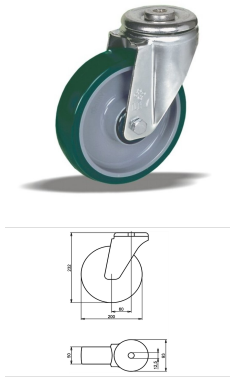
- Article code 2-054-40K
- SKU 40613
- EAN 3838461406133

Specifications

The result of our quality is maximum performance!

[Close](#)

[Close](#)



Product description

standard Swivel castor with an overall height of 232 mm

Wheel diameter x width: 200 x 50 mm

Top plate with 4 mounting holes of 12,5 mm, mounting hole distance #\$\$ mm and top plate outer dimensions: 93 mm

Wheel with roller bearing and injection-moulded polyurethane with hardness 92 ° shore A on polyamide.

Approved and tested load capacity

Dynamic 300 kg

Static 370 kg

Temperature range:

Continous operation: -20 | +80°C

Short (10 min) exposure: -40 | +100°C

Advantages of this Jump floor champion Swivel castor:

- ✓ stoney floor
- ✓-proof
- ✓ high temperature differences

LIV SYSTEMS standard Swivel castor + injection-moulded polyurethane Ø200 x W50mm for 300kg Prod ID: 40605

ID 40605: Castor overall height 232 mm | 4 mounting holes with distance #\$\$ mm | Wheel with roller bearing and injection-moulded polyurethane with hardness 92 ° shore A
| Jump floor champion, on stoney floor, cuts-proof, for high temperature differences

Product information

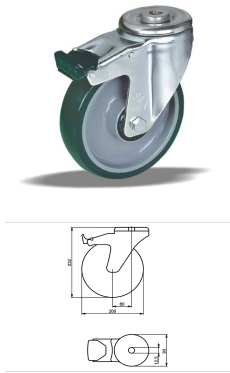
- Article code 2-054-40V
- SKU 40605
- EAN 3838461406058

Specifications

The result of our quality is maximum performance!

[Close](#)

[Close](#)



Product description

standard Swivel castor with brake with an overall height of 232 mm
 Wheel diameter x width: 200 x 50 mm
 Top plate with 4 mounting holes of 12,5 mm, mounting hole distance #\$\$ mm and top plate outer dimensions: 93 mm
 Wheel with roller bearing and injection-moulded polyurethane with hardness 92 ° shore A on polyamide
 the double brake system, brakes the turning of the wheel and the swivel rotation.

Approved and tested load capacity

Dynamic 300 kg
 Static 370 kg

Temperature range:

Continious operation: -20 | +80°C
 Short (10 min) exposure: -40 | +100°C

Advantages of this Jump floor champion Swivel castor with brake:

- ✓ stoney floor
- ✓ -proof
- ✓ high temperature differences

LIV SYSTEMS standard Swivel castor with brake + injection-moulded polyurethane Ø200 x W50mm for 300kg Prod ID: 40645

ID 40645: Castor overall height 232 mm | 4 mounting holes with distance #\$\$ mm | Wheel with roller bearing and injection-moulded polyurethane with hardness 92 ° shore A
 | The double brake system, brakes the turning of the wheel and the swivel rotation.

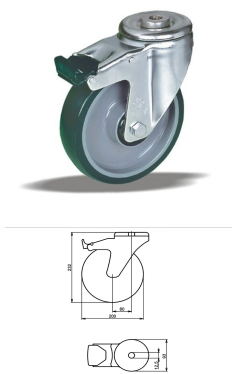
Product information

- Article code 2-055-40V
- SKU 40645
- EAN 3838461406454

Specifications

The result of our quality is maximum performance!

[Close](#)
[Close](#)



Product description

standard Swivel castor with brake with an overall height of 232 mm
 Wheel diameter x width: 200 x 50 mm
 Top plate with 4 mounting holes of 12,5 mm, mounting hole distance #\$\$ mm and top plate outer dimensions: 93 mm
 Wheel with ball bearing and injection-moulded polyurethane with hardness 92 ° shore A on polyamide
 the double brake system, brakes the turning of the wheel and the swivel rotation.

Approved and tested load capacity

Dynamic 300 kg
 Static 370 kg

Temperature range:

Continuous operation: -20 | +80°C
 Short (10 min) exposure: -40 | +100°C

Advantages of this Jump floor champion Swivel castor with brake:

- ✓ stoney floor
- ✓-proof
- ✓ high temperature differences

LIV SYSTEMS standard Swivel castor with brake + injection-moulded polyurethane Ø200 x W50mm for 300kg Prod ID: 40653

ID 40653: Castor overall height 232 mm | 4 mounting holes with distance #\$\$ mm | Wheel with ball bearing and injection-moulded polyurethane with hardness 92 ° shore A | The double brake system, brakes the turning of the wheel and the swivel rotation. |

Product information

- Article code 2-055-40K
- SKU 40653
- EAN 3838461406539

Specifications

The result of our quality is maximum performance!

Алматы (7273)495-231
Ангарск (3955)60-70-56
Архангельск (8182)63-90-72
Астрахань (8512)99-46-04
Барнаул (3852)73-04-60
Белгород (4722)40-23-64
Благовещенск (4162)22-76-07
Брянск (4832)59-03-52
Владивосток (423)249-28-31
Владикавказ (8672)28-90-48
Владимир (4922)49-43-18
Волгоград (844)278-03-48
Вологда (8172)26-41-59
Воронеж (473)204-51-73
Екатеринбург (343)384-55-89

Иваново (4932)77-34-06
Ижевск (3412)26-03-58
Иркутск (395)279-98-46
Казань (843)206-01-48
Калининград (4012)72-03-81
Калуга (4842)92-23-67
Кемерово (3842)65-04-62
Киров (8332)68-02-04
Коломна (4966)23-41-49
Кострома (4942)77-07-48
Краснодар (861)203-40-90
Красноярск (391)204-63-61
Курск (4712)77-13-04
Курган (3522)50-90-47
Липецк (4742)52-20-81

Магнитогорск (3519)55-03-13
Москва (495)268-04-70
Мурманск (8152)59-64-93
Набережные Челны (8552)20-53-41
Нижний Новгород (831)429-08-12
Новокузнецк (3843)20-46-81
Ноябрьск (3496)41-32-12
Новосибирск (383)227-86-73
Омск (3812)21-46-40
Орел (4862)44-53-42
Оренбург (3532)37-68-04
Пенза (8412)22-31-16
Петрозаводск (8142)55-98-37
Псков (8112)59-10-37
Пермь (342)205-81-47

Ростов-на-Дону (863)308-18-15
Рязань (4912)46-61-64
Самара (846)206-03-16
Санкт-Петербург (812)309-46-40
Саратов (845)249-38-78
Севастополь (8692)22-31-93
Саранск (8342)22-96-24
Симферополь (3652)67-13-56
Смоленск (4812)29-41-54
Сочи (862)225-72-31
Ставрополь (8652)20-65-13
Сургут (3462)77-98-35
Сыктывкар (8212)25-95-17
Тамбов (4752)50-40-97
Тверь (4822)63-31-35

Тольятти (8482)63-91-07
Томск (3822)98-41-53
Тула (4872)33-79-87
Тюмень (3452)66-21-18
Улан-Удэ (3012)59-97-51
Уфа (347)229-48-12
Хабаровск (4212)92-98-04
Чебоксары (8352)28-53-07
Челябинск (351)202-03-61
Череповец (8202)49-02-64
Чита (3022)38-34-83
Якутск (4112)23-90-97
Ярославль (4852)69-52-93

Россия +7(495)268-04-70

Казахстан +7(7172)727-132

Киргизия +996(312)96-26-47

<https://liv.nt-rt.ru/> || vis@nt-rt.ru