



Product description

standard Wheel with plain bearing and solid polyamide wheel with hardness 70±5 Shore D

Wheel diameter x width: 80 x 35 mm

Axle hole: 12 mm

Hub length: 44 mm

Approved and tested load capacity

Dynamic 150 kg

Static 180 kg

Temperature range:

Continuous operation: -25 | +80°C

Short (10 min) exposure: -30 | +110°C

Advantages of this Glide through the hall wheel:

- ✓ chemical resistance
- ✓ load capacity and shock impact resistant
- ✓ high temperature shifts

LIV SYSTEMS standard wheel + solid polyamide wheel Ø80 x W35mm for 150kg Prod ID: 66708

ID 66708: standard Wheel with plain bearing and solid polyamide wheel with hardness 70±5 Shore D | Axle hole: 12 mm | Hub length: 44 mm | Glide through the hall, good chemical resistance, high load capacity and shock impact resistant, for high temperature

Product information

- Article code 2-760 ISO
- SKU 66708
- EAN 3838461667084

Алматы (7273)495-231
Ангарск (3955)60-70-56
Архангельск (8182)63-90-72
Астрахань (8512)99-46-04
Барнаул (3852)73-04-60
Белгород (4722)40-23-64
Благовещенск (4162)22-76-07
Брянск (4832)59-03-52
Владивосток (423)249-28-31
Владикавказ (8672)28-90-48
Владимир (4922)49-43-18
Волгоград (844)278-03-48
Вологда (8172)26-41-59
Воронеж (473)204-51-73
Екатеринбург (343)384-55-89

Иваново (4932)77-34-06
Ижевск (3412)26-03-58
Иркутск (395)279-98-46
Казань (843)206-01-48
Калининград (4012)72-03-81
Калуга (4842)92-23-67
Кемерово (3842)65-04-62
Киров (8332)68-02-04
Коломна (4966)23-41-49
Кострома (4942)77-07-48
Краснодар (861)203-40-90
Красноярск (391)204-63-61
Курск (4712)77-13-04
Курган (3522)50-90-47
Липецк (4742)52-20-81

Магнитогорск (3519)55-03-13
Москва (495)268-04-70
Мурманск (8152)59-64-93
Набережные Челны (8552)20-53-41
Нижний Новгород (831)429-08-12
Новокузнецк (3843)20-46-81
Новосибирск (383)227-86-73
Омск (3812)21-46-40
Орел (4862)44-53-42
Оренбург (3532)37-68-04
Пенза (8412)22-31-16
Петрозаводск (8142)55-98-37
Псков (8112)59-10-37
Пермь (342)205-81-47

Ростов-на-Дону (863)308-18-15
Рязань (4912)46-61-64
Самара (846)206-03-16
Санкт-Петербург (812)309-46-40
Саратов (845)249-38-78
Севастополь (8692)22-31-93
Саранск (8342)22-96-24
Симферополь (3652)67-13-56
Смоленск (4812)29-41-54
Сочи (862)225-72-31
Ставрополь (8652)20-65-13
Сургут (3462)77-98-35
Сыктывкар (8212)25-95-17
Тамбов (4752)50-40-97
Тверь (4822)63-31-35

Тольятти (8482)63-91-07
Томск (3822)98-41-53
Тула (4872)33-79-87
Тюмень (3452)66-21-18
Ульяновск (8422)24-23-59
Улан-Удэ (3012)59-97-51
Уфа (347)229-48-12
Хабаровск (4212)92-98-04
Чебоксары (8352)28-53-07
Челябинск (351)202-03-61
Череповец (8202)49-02-64
Чита (3022)38-34-83
Якутск (4112)23-90-97
Ярославль (4852)69-52-93

Россия +7(495)268-04-70

Казахстан +7(7172)727-132

Киргизия +996(312)96-26-47

<https://liv.nt-rt.ru/> || vis@nt-rt.ru



Product description

standard Wheel with roller bearing and solid polyamide wheel with hardness 70±5 Shore D

Wheel diameter x width: 80 x 35 mm

Axle hole: 12 mm

Hub length: 44 mm

Approved and tested load capacity

Dynamic 150 kg

Static 180 kg

Temperature range:

Continuous operation: -25 | +80°C

Short (10 min) exposure: -30 | +110°C

Advantages of this Glide through the hall wheel:

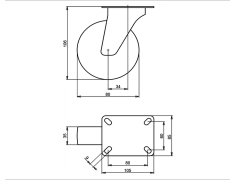
- ✓ chemical resistance
- ✓ load capacity and shock impact resistant
- ✓ high temperature shifts

LIV SYSTEMS standard wheel + solid polyamide wheel Ø80 x W35mm for 150kg Prod ID: 66703

ID 66703: standard Wheel with roller bearing and solid polyamide wheel with hardness 70±5 Shore D | Axle hole: 12 mm | Hub length: 44 mm | Glide through the hall, good chemical resistance, high load capacity and shock impact resistant, for high temperature

Product information

- Article code 2-750 ISO
- SKU 66703
- EAN 3838461667039



Product description

standard Swivel castor with an overall height of 106 mm

Wheel diameter x width: 80 x 35 mm

Top plate with 4 mounting holes of 9 mm, mounting hole distance 80x60 mm and top plate outer dimensions: 105x85 mm

Wheel with plain bearing and solid polyamide wheel with hardness 70±5 Shore D.

Approved and tested load capacity

Dynamic 150 kg

Static 180 kg

Temperature range:

Continuous operation: -25 | +80°C

Short (10 min) exposure: -30 | +110°C

Advantages of this Glide through the hall Swivel castor:

- ✓ chemical resistance
- ✓ load capacity and shock impact resistant
- ✓ high temperature shifts

LIV SYSTEMS standard Swivel castor + solid polyamide wheel Ø80 x W35mm for 150kg Prod ID: 66842

ID 66842: Castor overall height 106 mm | 4 mounting holes with distance 80x60 mm | Wheel with plain bearing and solid polyamide wheel with hardness 70±5 Shore D | Glide through the hall, good chemical resistance, high load capacity and shock impact resis

Product information

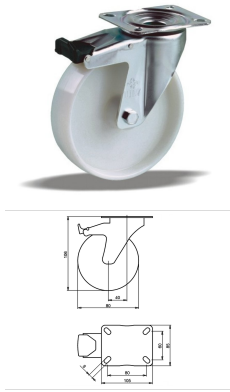
- Article code 2-670 ISO
- SKU 66842
- EAN 3838461668425

Specifications

The result of our quality is maximum performance!

[Close](#)

[Close](#)



Product description

standard Swivel castor with brake with an overall height of 106 mm
 Wheel diameter x width: 80 x 35 mm
 Top plate with 4 mounting holes of 9 mm, mounting hole distance 80x60 mm and top plate outer dimensions: 105x85 mm
 Wheel with roller bearing and solid polyamide wheel with hardness 70±5 Shore D
 the double brake system, brakes the turning of the wheel and the swivel rotation.

Approved and tested load capacity

Dynamic 150 kg
 Static 180 kg

Temperature range:

Continuous operation: -25 | +80°C
 Short (10 min) exposure: -30 | +110°C

Advantages of this Glide through the hall Swivel castor with brake:

- ✓ chemical resistance
- ✓ load capacity and shock impact resistant
- ✓ high temperature shifts

LIV SYSTEMS standard Swivel castor with brake + solid polyamide wheel Ø80 x W35mm for 150kg Prod ID: 30484

ID 30484: Castor overall height 106 mm | 4 mounting holes with distance 80x60 mm | Wheel with roller bearing and solid polyamide wheel with hardness 70±5 Shore D | The double brake system, brakes the turning of the wheel and the swivel rotation. | Glide

Product information

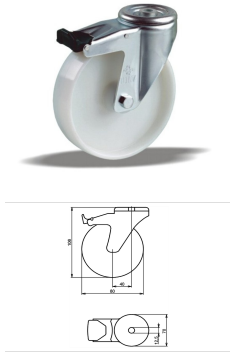
- Article code 2-721 A
- SKU 30484
- EAN 3838461304842

Specifications

The result of our quality is maximum performance!

[Close](#)

[Close](#)



Product description

standard Swivel castor with brake with an overall height of 106 mm
 Wheel diameter x width: 80 x 35 mm
 Top plate with 4 mounting holes of 12,5 mm, mounting hole distance #\$\$ mm and top plate outer dimensions: 70 mm
 Wheel with plain bearing and solid polyamide wheel with hardness 70±5 Shore D
 the double brake system, brakes the turning of the wheel and the swivel rotation.

Approved and tested load capacity

Dynamic 150 kg
 Static 180 kg

Temperature range:

Continuous operation: -25 | +80°C
 Short (10 min) exposure: -30 | +110°C

Advantages of this Glide through the hall Swivel castor with brake:

- ✓ chemical resistance
- ✓ load capacity and shock impact resistant
- ✓ high temperature shifts

LIV SYSTEMS standard Swivel castor with brake + solid polyamide wheel Ø80 x W35mm for 150kg Prod ID: 34704

ID 34704: Castor overall height 106 mm | 4 mounting holes with distance #\$\$ mm | Wheel with plain bearing and solid polyamide wheel with hardness 70±5 Shore D | The double brake system, brakes the turning of the wheel and the swivel rotation. | Glide thr

Product information

- Article code 2-793 L12
- SKU 34704
- EAN 3838461347047

Specifications

The result of our quality is maximum performance!

[Close](#)

[Close](#)



Product description

standard Wheel with roller bearing and solid polyamide wheel with hardness 70±5 Shore D

Wheel diameter x width: 80 x 35 mm

Axle hole: 12 mm

Hub length: 44 mm

Approved and tested load capacity

Dynamic 150 kg

Static 180 kg

Temperature range:

Continuous operation: -25 | +80°C

Short (10 min) exposure: -30 | +110°C

Advantages of this Glide through the hall wheel:

- ✓ chemical resistance
- ✓ load capacity and shock impact resistant
- ✓ high temperature shifts

LIV SYSTEMS standard wheel + solid polyamide wheel Ø80 x W35mm for 150kg Prod ID: 66497

ID 66497: standard Wheel with roller bearing and solid polyamide wheel with hardness 70±5 Shore D | Axle hole: 12 mm | Hub length: 44 mm | Glide through the hall, good chemical resistance, high load capacity and shock impact resistant, for high temperature

Product information

- Article code 2-750 ISO
- SKU 66497
- EAN 3838461664977



Product description

standard Wheel with plain bearing and solid polyamide wheel with hardness 70±5 Shore D

Wheel diameter x width: 80 x 35 mm

Axle hole: 12 mm

Hub length: 44 mm

Approved and tested load capacity

Dynamic 150 kg

Static 180 kg

Temperature range:

Continuous operation: -25 | +80°C

Short (10 min) exposure: -30 | +110°C

Advantages of this Glide through the hall wheel:

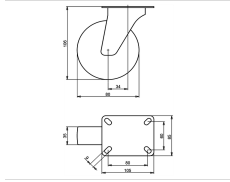
- ✓ chemical resistance
- ✓ load capacity and shock impact resistant
- ✓ high temperature shifts

LIV SYSTEMS standard wheel + solid polyamide wheel Ø80 x W35mm for 150kg Prod ID: 66713

ID 66713: standard Wheel with plain bearing and solid polyamide wheel with hardness 70±5 Shore D | Axle hole: 12 mm | Hub length: 44 mm | Glide through the hall, good chemical resistance, high load capacity and shock impact resistant, for high temperature

Product information

- Article code 2-760 ISO
- SKU 66713
- EAN 3838461667138



Product description

standard Swivel castor with an overall height of 106 mm

Wheel diameter x width: 80 x 35 mm

Top plate with 4 mounting holes of 9 mm, mounting hole distance 80x60 mm and top plate outer dimensions: 105x85 mm

Wheel with roller bearing and solid polyamide wheel with hardness 70±5 Shore D.

Approved and tested load capacity

Dynamic 150 kg

Static 180 kg

Temperature range:

Continuous operation: -25 | +80°C

Short (10 min) exposure: -30 | +110°C

Advantages of this Glide through the hall Swivel castor:

- ✓ chemical resistance
- ✓ load capacity and shock impact resistant
- ✓ high temperature shifts

LIV SYSTEMS standard Swivel castor + solid polyamide wheel Ø80 x W35mm for 150kg Prod ID: 66728

ID 66728: Castor overall height 106 mm | 4 mounting holes with distance 80x60 mm | Wheel with roller bearing and solid polyamide wheel with hardness 70±5 Shore D |

Glide through the hall, good chemical resistance, high load capacity and shock impact resi

Product information

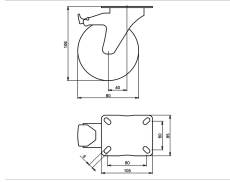
- Article code 2-660 ISO
- SKU 66728
- EAN 3838461667282

Specifications

The result of our quality is maximum performance!

[Close](#)

[Close](#)



Product description

standard Swivel castor with brake with an overall height of 106 mm
 Wheel diameter x width: 80 x 35 mm
 Top plate with 4 mounting holes of 9 mm, mounting hole distance 80x60 mm and top plate outer dimensions: 105x85 mm
 Wheel with plain bearing and solid polyamide wheel with hardness 70±5 Shore D
 the double brake system, brakes the turning of the wheel and the swivel rotation.

Approved and tested load capacity

Dynamic 150 kg
 Static 180 kg

Temperature range:

Continuous operation: -25 | +80°C
 Short (10 min) exposure: -30 | +110°C

Advantages of this Glide through the hall Swivel castor with brake:

- ✓ chemical resistance
- ✓ load capacity and shock impact resistant
- ✓ high temperature shifts

LIV SYSTEMS standard Swivel castor with brake + solid polyamide wheel Ø80 x W35mm for 150kg Prod ID: 30443

ID 30443: Castor overall height 106 mm | 4 mounting holes with distance 80x60 mm | Wheel with plain bearing and solid polyamide wheel with hardness 70±5 Shore D | The double brake system, brakes the turning of the wheel and the swivel rotation. | Glide t

Product information

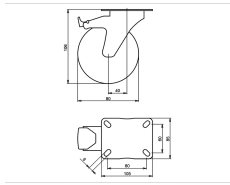
- Article code 2-682 A
- SKU 30443
- EAN 3838461304439

Specifications

The result of our quality is maximum performance!

[Close](#)

[Close](#)



Product description

standard Swivel castor with brake with an overall height of 106 mm
 Wheel diameter x width: 80 x 35 mm
 Top plate with 4 mounting holes of 9 mm, mounting hole distance 80x60 mm and top plate outer dimensions: 105x85 mm
 Wheel with roller bearing and solid polyamide wheel with hardness 70±5 Shore D
 the double brake system, brakes the turning of the wheel and the swivel rotation.

Approved and tested load capacity

Dynamic 150 kg
 Static 180 kg

Temperature range:

Continuous operation: -25 | +80°C
 Short (10 min) exposure: -30 | +110°C

Advantages of this Glide through the hall Swivel castor with brake:

- ✓ chemical resistance
- ✓ load capacity and shock impact resistant
- ✓ high temperature shifts

LIV SYSTEMS standard Swivel castor with brake + solid polyamide wheel Ø80 x W35mm for 150kg Prod ID: 30435

ID 30435: Castor overall height 106 mm | 4 mounting holes with distance 80x60 mm | Wheel with roller bearing and solid polyamide wheel with hardness 70±5 Shore D | The double brake system, brakes the turning of the wheel and the swivel rotation. | Glide

Product information

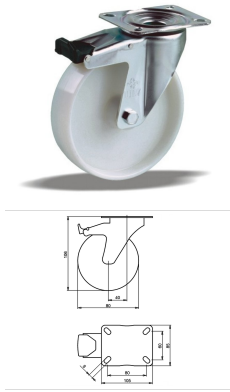
- Article code 2-721 A
- SKU 30435
- EAN 3838461304354

Specifications

The result of our quality is maximum performance!

[Close](#)

[Close](#)



Product description

standard Swivel castor with brake with an overall height of 106 mm
 Wheel diameter x width: 80 x 35 mm
 Top plate with 4 mounting holes of 9 mm, mounting hole distance 80x60 mm and top plate outer dimensions: 105x85 mm
 Wheel with plain bearing and solid polyamide wheel with hardness 70±5 Shore D
 the double brake system, brakes the turning of the wheel and the swivel rotation.

Approved and tested load capacity

Dynamic 150 kg
 Static 180 kg

Temperature range:

Continuous operation: -25 | +80°C
 Short (10 min) exposure: -30 | +110°C

Advantages of this Glide through the hall Swivel castor with brake:

- ✓ chemical resistance
- ✓ load capacity and shock impact resistant
- ✓ high temperature shifts

LIV SYSTEMS standard Swivel castor with brake + solid polyamide wheel Ø80 x W35mm for 150kg Prod ID: 30485

ID 30485: Castor overall height 106 mm | 4 mounting holes with distance 80x60 mm | Wheel with plain bearing and solid polyamide wheel with hardness 70±5 Shore D | The double brake system, brakes the turning of the wheel and the swivel rotation. | Glide t

Product information

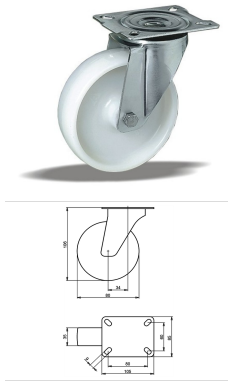
- Article code 2-682 A
- SKU 30485
- EAN 3838461304859

Specifications

The result of our quality is maximum performance!

[Close](#)

[Close](#)



Product description

standard Swivel castor with an overall height of 106 mm

Wheel diameter x width: 80 x 35 mm

Top plate with 4 mounting holes of 9 mm, mounting hole distance 80x60 mm and top plate outer dimensions: 105x85 mm

Wheel with plain bearing and solid polyamide wheel with hardness 70±5 Shore D.

Approved and tested load capacity

Dynamic 150 kg

Static 180 kg

Temperature range:

Continuous operation: -25 | +80°C

Short (10 min) exposure: -30 | +110°C

Advantages of this Glide through the hall Swivel castor:

- ✓ chemical resistance
- ✓ load capacity and shock impact resistant
- ✓ high temperature shifts

LIV SYSTEMS standard Swivel castor + solid polyamide wheel Ø80 x W35mm for 150kg Prod ID: 66847

ID 66847: Castor overall height 106 mm | 4 mounting holes with distance 80x60 mm | Wheel with plain bearing and solid polyamide wheel with hardness 70±5 Shore D | Glide through the hall, good chemical resistance, high load capacity and shock impact resis

Product information

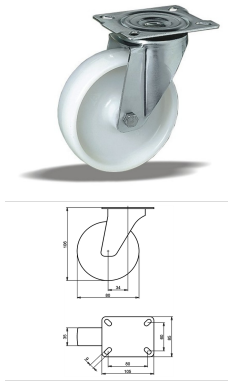
- Article code 2-670 ISO
- SKU 66847
- EAN 3838461668470

Specifications

The result of our quality is maximum performance!

[Close](#)

[Close](#)



Product description

standard Swivel castor with an overall height of 106 mm

Wheel diameter x width: 80 x 35 mm

Top plate with 4 mounting holes of 9 mm, mounting hole distance 80x60 mm and top plate outer dimensions: 105x85 mm

Wheel with roller bearing and solid polyamide wheel with hardness 70±5 Shore D.

Approved and tested load capacity

Dynamic 150 kg

Static 180 kg

Temperature range:

Continuous operation: -25 | +80°C

Short (10 min) exposure: -30 | +110°C

Advantages of this Glide through the hall Swivel castor:

- ✓ chemical resistance
- ✓ load capacity and shock impact resistant
- ✓ high temperature shifts

LIV SYSTEMS standard Swivel castor + solid polyamide wheel Ø80 x W35mm for 150kg Prod ID: 66733

ID 66733: Castor overall height 106 mm | 4 mounting holes with distance 80x60 mm | Wheel with roller bearing and solid polyamide wheel with hardness 70±5 Shore D | Glide through the hall, good chemical resistance, high load capacity and shock impact resistant

Product information

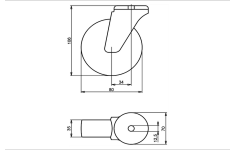
- Article code 2-660 ISO
- SKU 66733
- EAN 3838461667336

Specifications

The result of our quality is maximum performance!

[Close](#)

[Close](#)



Product description

standard Swivel castor with an overall height of 106 mm

Wheel diameter x width: 80 x 35 mm

Top plate with 4 mounting holes of 12,5 mm, mounting hole distance #\$\$ mm and top plate outer dimensions: 70 mm

Wheel with plain bearing and solid polyamide wheel with hardness 70±5 Shore D.

Approved and tested load capacity

Dynamic 150 kg

Static 180 kg

Temperature range:

Continuous operation: -25 | +80°C

Short (10 min) exposure: -30 | +110°C

Advantages of this Glide through the hall Swivel castor:

- ✓ chemical resistance
- ✓ load capacity and shock impact resistant
- ✓ high temperature shifts

LIV SYSTEMS standard Swivel castor + solid polyamide wheel Ø80 x W35mm for 150kg Prod ID: 34383

ID 34383: Castor overall height 106 mm | 4 mounting holes with distance #\$\$ mm | Wheel with plain bearing and solid polyamide wheel with hardness 70±5 Shore D | Glide through the hall, good chemical resistance, high load capacity and shock impact resista

Product information

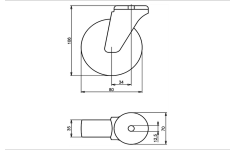
- Article code 2-765 L12
- SKU 34383
- EAN 3838461343834

Specifications

The result of our quality is maximum performance!

[Close](#)

[Close](#)



Product description

standard Swivel castor with an overall height of 106 mm

Wheel diameter x width: 80 x 35 mm

Top plate with 4 mounting holes of 12,5 mm, mounting hole distance #\$\$ mm and top plate outer dimensions: 70 mm

Wheel with roller bearing and solid polyamide wheel with hardness 70±5 Shore D.

Approved and tested load capacity

Dynamic 150 kg

Static 180 kg

Temperature range:

Continuous operation: -25 | +80°C

Short (10 min) exposure: -30 | +110°C

Advantages of this Glide through the hall Swivel castor:

- ✓ chemical resistance
- ✓ load capacity and shock impact resistant
- ✓ high temperature shifts

LIV SYSTEMS standard Swivel castor + solid polyamide wheel Ø80 x W35mm for 150kg Prod ID: 34375

ID 34375: Castor overall height 106 mm | 4 mounting holes with distance #\$\$ mm | Wheel with roller bearing and solid polyamide wheel with hardness 70±5 Shore D | Glide through the hall, good chemical resistance, high load capacity and shock impact resist

Product information

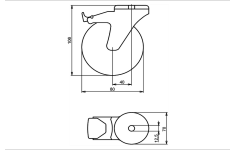
- Article code 2-755 L12
- SKU 34375
- EAN 3838461343759

Specifications

The result of our quality is maximum performance!

[Close](#)

[Close](#)



Product description

standard Swivel castor with brake with an overall height of 106 mm
 Wheel diameter x width: 80 x 35 mm
 Top plate with 4 mounting holes of 12,5 mm, mounting hole distance #\$\$ mm and top plate outer dimensions: 70 mm
 Wheel with plain bearing and solid polyamide wheel with hardness 70±5 Shore D
 the double brake system, brakes the turning of the wheel and the swivel rotation.

Approved and tested load capacity

Dynamic 150 kg
 Static 180 kg

Temperature range:

Continuous operation: -25 | +80°C
 Short (10 min) exposure: -30 | +110°C

Advantages of this Glide through the hall Swivel castor with brake:

- ✓ chemical resistance
- ✓ load capacity and shock impact resistant
- ✓ high temperature shifts

LIV SYSTEMS standard Swivel castor with brake + solid polyamide wheel Ø80 x W35mm for 150kg Prod ID: 34625

ID 34625: Castor overall height 106 mm | 4 mounting holes with distance #\$\$ mm | Wheel with plain bearing and solid polyamide wheel with hardness 70±5 Shore D | The double brake system, brakes the turning of the wheel and the swivel rotation. | Glide thr

Product information

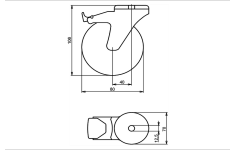
- Article code 2-793 L12
- SKU 34625
- EAN 3838461346255

Specifications

The result of our quality is maximum performance!

[Close](#)

[Close](#)



Product description

standard Swivel castor with brake with an overall height of 106 mm
 Wheel diameter x width: 80 x 35 mm
 Top plate with 4 mounting holes of 12,5 mm, mounting hole distance #\$\$ mm and top plate outer dimensions: 70 mm
 Wheel with roller bearing and solid polyamide wheel with hardness 70±5 Shore D
 the double brake system, brakes the turning of the wheel and the swivel rotation.

Approved and tested load capacity

Dynamic 150 kg
 Static 180 kg

Temperature range:

Continuous operation: -25 | +80°C
 Short (10 min) exposure: -30 | +110°C

Advantages of this Glide through the hall Swivel castor with brake:

- ✓ chemical resistance
- ✓ load capacity and shock impact resistant
- ✓ high temperature shifts

LIV SYSTEMS standard Swivel castor with brake + solid polyamide wheel Ø80 x W35mm for 150kg Prod ID: 34624

ID 34624: Castor overall height 106 mm | 4 mounting holes with distance #\$\$ mm | Wheel with roller bearing and solid polyamide wheel with hardness 70±5 Shore D | The double brake system, brakes the turning of the wheel and the swivel rotation. | Glide th

Product information

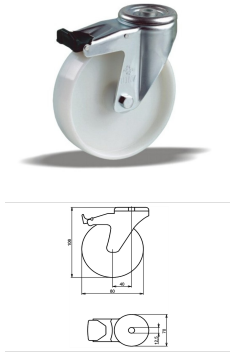
- Article code 2-788 L12
- SKU 34624
- EAN 3838461346248

Specifications

The result of our quality is maximum performance!

[Close](#)

[Close](#)



Product description

standard Swivel castor with brake with an overall height of 106 mm
 Wheel diameter x width: 80 x 35 mm
 Top plate with 4 mounting holes of 12,5 mm, mounting hole distance #\$\$ mm and top plate outer dimensions: 70 mm
 Wheel with roller bearing and solid polyamide wheel with hardness 70±5 Shore D
 the double brake system, brakes the turning of the wheel and the swivel rotation.

Approved and tested load capacity

Dynamic 150 kg
 Static 180 kg

Temperature range:

Continious operation: -25 | +80°C
 Short (10 min) exposure: -30 | +110°C

Advantages of this Glide through the hall Swivel castor with brake:

- ✓ chemical resistance
- ✓ load capacity and shock impact resistant
- ✓ high temperature shifts

LIV SYSTEMS standard Swivel castor with brake + solid polyamide wheel Ø80 x W35mm for 150kg Prod ID: 34703

ID 34703: Castor overall height 106 mm | 4 mounting holes with distance #\$\$ mm | Wheel with roller bearing and solid polyamide wheel with hardness 70±5 Shore D | The double brake system, brakes the turning of the wheel and the swivel rotation. | Glide th

Product information

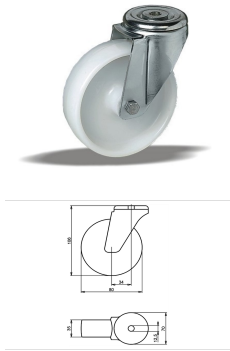
- Article code 2-788 L12
- SKU 34703
- EAN 3838461347030

Specifications

The result of our quality is maximum performance!

[Close](#)

[Close](#)



Product description

standard Swivel castor with an overall height of 106 mm

Wheel diameter x width: 80 x 35 mm

Top plate with 4 mounting holes of 12,5 mm, mounting hole distance #\$\$ mm and top plate outer dimensions: 70 mm

Wheel with plain bearing and solid polyamide wheel with hardness 70±5 Shore D.

Approved and tested load capacity

Dynamic 150 kg

Static 180 kg

Temperature range:

Continuous operation: -25 | +80°C

Short (10 min) exposure: -30 | +110°C

Advantages of this Glide through the hall Swivel castor:

- ✓ chemical resistance
- ✓ load capacity and shock impact resistant
- ✓ high temperature shifts

LIV SYSTEMS standard Swivel castor + solid polyamide wheel Ø80 x W35mm for 150kg Prod ID: 34455

ID 34455: Castor overall height 106 mm | 4 mounting holes with distance #\$\$ mm | Wheel with plain bearing and solid polyamide wheel with hardness 70±5 Shore D | Glide through the hall, good chemical resistance, high load capacity and shock impact resistance

Product information

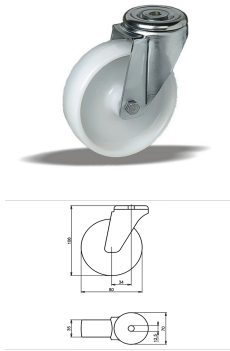
- Article code 2-765 L12
- SKU 34455
- EAN 3838461344558

Specifications

The result of our quality is maximum performance!

[Close](#)

[Close](#)



Product description

standard Swivel castor with an overall height of 106 mm

Wheel diameter x width: 80 x 35 mm

Top plate with 4 mounting holes of 12,5 mm, mounting hole distance #\$\$ mm and top plate outer dimensions: 70 mm

Wheel with roller bearing and solid polyamide wheel with hardness 70±5 Shore D.

Approved and tested load capacity

Dynamic 150 kg

Static 180 kg

Temperature range:

Continuous operation: -25 | +80°C

Short (10 min) exposure: -30 | +110°C

Advantages of this Glide through the hall Swivel castor:

- ✓ chemical resistance
- ✓ load capacity and shock impact resistant
- ✓ high temperature shifts

LIV SYSTEMS standard Swivel castor + solid polyamide wheel Ø80 x W35mm for 150kg Prod ID: 34453

ID 34453: Castor overall height 106 mm | 4 mounting holes with distance #\$\$ mm | Wheel with roller bearing and solid polyamide wheel with hardness 70±5 Shore D | Glide through the hall, good chemical resistance, high load capacity and shock impact resist

Product information

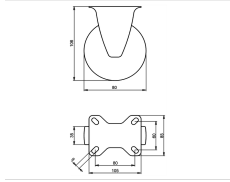
- Article code 2-755 L12
- SKU 34453
- EAN 3838461344534

Specifications

The result of our quality is maximum performance!

[Close](#)

[Close](#)



Product description

standard Fixed castor with an overall height of 106 mm

Wheel diameter x width: 80 x 35 mm

Top plate with 4 mounting holes of 9 mm, mounting hole distance 80x60 mm and top plate outer dimensions: 105x85 mm

Wheel with plain bearing and solid polyamide wheel with hardness 70±5 Shore D.

Approved and tested load capacity

Dynamic 150 kg

Static 180 kg

Temperature range:

Continuous operation: -25 | +80°C

Short (10 min) exposure: -30 | +110°C

Advantages of this Glide through the hall Fixed castor:

- ✓ chemical resistance
- ✓ load capacity and shock impact resistant
- ✓ high temperature shifts

LIV SYSTEMS standard Fixed castor + solid polyamide wheel Ø80 x W35mm for 150kg Prod ID: 67009

ID 67009: Castor overall height 106 mm | 4 mounting holes with distance 80x60 mm | Wheel with plain bearing and solid polyamide wheel with hardness 70±5 Shore D | Glide through the hall, good chemical resistance, high load capacity and shock impact resis

Product information

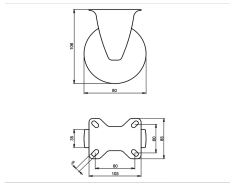
- Article code 2-675 ISO
- SKU 67009
- EAN 3838461670091

Specifications

The result of our quality is maximum performance!

[Close](#)

[Close](#)



Product description

standard Fixed castor with an overall height of 106 mm

Wheel diameter x width: 80 x 35 mm

Top plate with 4 mounting holes of 9 mm, mounting hole distance 80x60 mm and top plate outer dimensions: 105x85 mm

Wheel with roller bearing and solid polyamide wheel with hardness 70±5 Shore D.

Approved and tested load capacity

Dynamic 150 kg

Static 180 kg

Temperature range:

Continuous operation: -25 | +80°C

Short (10 min) exposure: -30 | +110°C

Advantages of this Glide through the hall Fixed castor:

- ✓ chemical resistance
- ✓ load capacity and shock impact resistant
- ✓ high temperature shifts

LIV SYSTEMS standard Fixed castor + solid polyamide wheel Ø80 x W35mm for 150kg Prod ID: 66993

ID 66993: Castor overall height 106 mm | 4 mounting holes with distance 80x60 mm | Wheel with roller bearing and solid polyamide wheel with hardness 70±5 Shore D | Glide through the hall, good chemical resistance, high load capacity and shock impact resi

Product information

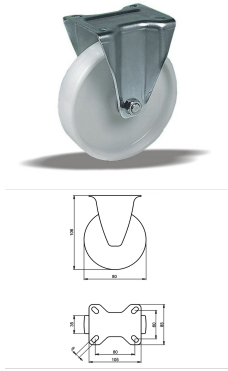
- Article code 2-665 ISO
- SKU 66993
- EAN 3838461669934

Specifications

The result of our quality is maximum performance!

[Close](#)

[Close](#)



Product description

standard Fixed castor with an overall height of 106 mm

Wheel diameter x width: 80 x 35 mm

Top plate with 4 mounting holes of 9 mm, mounting hole distance 80x60 mm and top plate outer dimensions: 105x85 mm

Wheel with plain bearing and solid polyamide wheel with hardness 70±5 Shore D.

Approved and tested load capacity

Dynamic 150 kg

Static 180 kg

Temperature range:

Continuous operation: -25 | +80°C

Short (10 min) exposure: -30 | +110°C

Advantages of this Glide through the hall Fixed castor:

- ✓ chemical resistance
- ✓ load capacity and shock impact resistant
- ✓ high temperature shifts

LIV SYSTEMS standard Fixed castor + solid polyamide wheel Ø80 x W35mm for 150kg Prod ID: 67014

ID 67014: Castor overall height 106 mm | 4 mounting holes with distance 80x60 mm | Wheel with plain bearing and solid polyamide wheel with hardness 70±5 Shore D |

Glide through the hall, good chemical resistance, high load capacity and shock impact resis

Product information

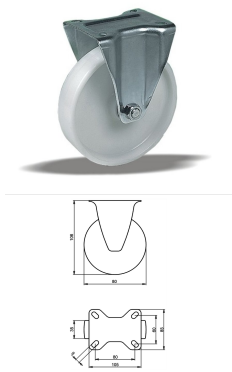
- Article code 2-675 ISO
- SKU 67014
- EAN 3838461670145

Specifications

The result of our quality is maximum performance!

[Close](#)

[Close](#)



Product description

standard Fixed castor with an overall height of 106 mm

Wheel diameter x width: 80 x 35 mm

Top plate with 4 mounting holes of 9 mm, mounting hole distance 80x60 mm and top plate outer dimensions: 105x85 mm

Wheel with roller bearing and solid polyamide wheel with hardness 70±5 Shore D.

Approved and tested load capacity

Dynamic 150 kg

Static 180 kg

Temperature range:

Continuous operation: -25 | +80°C

Short (10 min) exposure: -30 | +110°C

Advantages of this Glide through the hall Fixed castor:

- ✓ chemical resistance
- ✓ load capacity and shock impact resistant
- ✓ high temperature shifts

LIV SYSTEMS standard Fixed castor + solid polyamide wheel Ø80 x W35mm for 150kg Prod ID: 66998

ID 66998: Castor overall height 106 mm | 4 mounting holes with distance 80x60 mm | Wheel with roller bearing and solid polyamide wheel with hardness 70±5 Shore D | Glide through the hall, good chemical resistance, high load capacity and shock impact resi

Product information

- Article code 2-665 ISO
- SKU 66998
- EAN 3838461669989

Алматы (7273)495-231
Ангарск (3955)60-70-56
Архангельск (8182)63-90-72
Астрахань (8512)99-46-04
Барнаул (3852)73-04-60
Белгород (4722)40-23-64
Благовещенск (4162)22-76-07
Брянск (4832)59-03-52
Владивосток (423)249-28-31
Владикавказ (8672)28-90-48
Владимир (4922)49-43-18
Волгоград (844)278-03-48
Вологда (8172)26-41-59
Воронеж (473)204-51-73
Екатеринбург (343)384-55-89

Иваново (4932)77-34-06
Ижевск (3412)26-03-58
Иркутск (395)279-98-46
Казань (843)206-01-48
Калининград (4012)72-03-81
Калуга (4842)92-23-67
Кемерово (3842)65-04-62
Киров (8332)68-02-04
Коломна (4966)23-41-49
Кострома (4942)77-07-48
Краснодар (861)203-40-90
Красноярск (391)204-63-61
Курск (4712)77-13-04
Курган (3522)50-90-47
Липецк (4742)52-20-81

Магнитогорск (3519)55-03-13
Москва (495)268-04-70
Мурманск (8152)59-64-93
Набережные Челны (8552)20-53-41
Нижний Новгород (831)429-08-12
Новокузнецк (3843)20-46-81
Ноябрьск (3496)41-32-12
Новосибирск (383)227-86-73
Омск (3812)21-46-40
Орел (4862)44-53-42
Оренбург (3532)37-68-04
Пенза (8412)22-31-16
Петрозаводск (8142)55-98-37
Псков (8112)59-10-37
Пермь (342)205-81-47

Ростов-на-Дону (863)308-18-15
Рязань (4912)46-61-64
Самара (846)206-03-16
Санкт-Петербург (812)309-46-40
Саратов (845)249-38-78
Севастополь (8692)22-31-93
Саранск (8342)22-96-24
Симферополь (3652)67-13-56
Смоленск (4812)29-41-54
Сочи (862)225-72-31
Ставрополь (8652)20-65-13
Сургут (3462)77-98-35
Сыктывкар (8212)25-95-17
Тамбов (4752)50-40-97
Тверь (4822)63-31-35

Тольятти (8482)63-91-07
Томск (3822)98-41-53
Тула (4872)33-79-87
Тюмень (3452)66-21-18
Ульяновск (8422)24-23-59
Улан-Удэ (3012)59-97-51
Уфа (347)229-48-12
Хабаровск (4212)92-98-04
Чебоксары (8352)28-53-07
Челябинск (351)202-03-61
Череповец (8202)49-02-64
Чита (3022)38-34-83
Якутск (4112)23-90-97
Ярославль (4852)69-52-93

Россия +7(495)268-04-70

Казахстан +7(7172)727-132

Киргизия +996(312)96-26-47

<https://liv.nt-rt.ru/> || vis@nt-rt.ru