

## Product description

standard Swivel castor with brake with an overall height of 128 mm  
 Wheel diameter x width: 100 x 35 mm  
 Top plate with 4 mounting holes of 9 mm, mounting hole distance 80x60 mm and top plate outer dimensions: 105x85 mm  
 Wheel with plain bearing and solid polyamide wheel with hardness 70±5 Shore D  
 the double brake system, brakes the turning of the wheel and the swivel rotation.

### Approved and tested load capacity

Dynamic 200 kg  
 Static 250 kg

### Temperature range:

Continuous operation: -25 | +80°C  
 Short (10 min) exposure: -30 | +110°C

### Advantages of this Glide through the hall Swivel castor with brake:

- ✓ chemical resistance
- ✓ load capacity and shock impact resistant
- ✓ high temperature shifts

## LIV SYSTEMS standard Swivel castor with brake + solid polyamide wheel Ø100 x W35mm for 200kg Prod ID: 30494

ID 30494: Castor overall height 128 mm | 4 mounting holes with distance 80x60 mm | Wheel with plain bearing and solid polyamide wheel with hardness 70±5 Shore D | The double brake system, brakes the turning of the wheel and the swivel rotation. | Glide t

## Product information

- Article code 2-683 A
- SKU 30494
- EAN 3838461304941

**Алматы** (7273)495-231  
**Ангарск** (3955)60-70-56  
**Архангельск** (8182)63-90-72  
**Астрахань** (8512)99-46-04  
**Барнаул** (3852)73-04-60  
**Белгород** (4722)40-23-64  
**Благовещенск** (4162)22-76-07  
**Брянск** (4832)59-03-52  
**Владивосток** (423)249-28-31  
**Владикавказ** (8672)28-90-48  
**Владимир** (4922)49-43-18  
**Волгоград** (844)278-03-48  
**Вологда** (8172)26-41-59  
**Воронеж** (473)204-51-73  
**Екатеринбург** (343)384-55-89

**Иваново** (4932)77-34-06  
**Ижевск** (3412)26-03-58  
**Иркутск** (395)279-98-46  
**Казань** (843)206-01-48  
**Калининград** (4012)72-03-81  
**Калуга** (4842)92-23-67  
**Кемерово** (3842)65-04-62  
**Киров** (8332)68-02-04  
**Коломна** (4966)23-41-49  
**Кострома** (4942)77-07-48  
**Краснодар** (861)203-40-90  
**Красноярск** (391)204-63-61  
**Курск** (4712)77-13-04  
**Курган** (3522)50-90-47  
**Липецк** (4742)52-20-81

**Магнитогорск** (3519)55-03-13  
**Москва** (495)268-04-70  
**Мурманск** (8152)59-64-93  
**Набережные Челны** (8552)20-53-41  
**Нижний Новгород** (831)429-08-12  
**Новокузнецк** (3843)20-46-81  
**Ноябрьск** (3496)41-32-12  
**Новосибирск** (383)227-86-73  
**Омск** (3812)21-46-40  
**Орел** (4862)44-53-42  
**Оренбург** (3532)37-68-04  
**Пенза** (8412)22-31-16  
**Петрозаводск** (8142)55-98-37  
**Псков** (8112)59-10-37  
**Пермь** (342)205-81-47

**Ростов-на-Дону** (863)308-18-15  
**Рязань** (4912)46-61-64  
**Самара** (846)206-03-16  
**Санкт-Петербург** (812)309-46-40  
**Саратов** (845)249-38-78  
**Севастополь** (8692)22-31-93  
**Саранск** (8342)22-96-24  
**Симферополь** (3652)67-13-56  
**Смоленск** (4812)29-41-54  
**Сочи** (862)225-72-31  
**Ставрополь** (8652)20-65-13  
**Сургут** (3462)77-98-35  
**Сыктывкар** (8212)25-95-17  
**Тамбов** (4752)50-40-97  
**Тверь** (4822)63-31-35

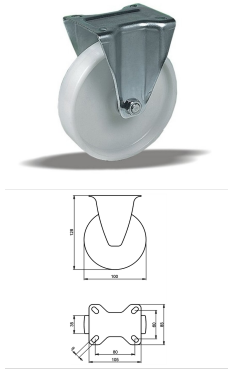
**Тольятти** (8482)63-91-07  
**Томск** (3822)98-41-53  
**Тула** (4872)33-79-87  
**Тюмень** (3452)66-21-18  
**Ульяновск** (8422)24-23-59  
**Улан-Удэ** (3012)59-97-51  
**Уфа** (347)229-48-12  
**Хабаровск** (4212)92-98-04  
**Чебоксары** (8352)28-53-07  
**Челябинск** (351)202-03-61  
**Череповец** (8202)49-02-64  
**Чита** (3022)38-34-83  
**Якутск** (4112)23-90-97  
**Ярославль** (4852)69-52-93

Россия +7(495)268-04-70

Казахстан +7(7172)727-132

Киргизия +996(312)96-26-47

<https://liv.nt-rt.ru/> || [vis@nt-rt.ru](mailto:vis@nt-rt.ru)



## Product description

standard Fixed castor with an overall height of 128 mm

Wheel diameter x width: 100 x 35 mm

Top plate with 4 mounting holes of 9 mm, mounting hole distance 80x60 mm and top plate outer dimensions: 105x85 mm

Wheel with plain bearing and solid polyamide wheel with hardness 70±5 Shore D.

### Approved and tested load capacity

Dynamic 200 kg

Static 250 kg

### Temperature range:

Continuous operation: -25 | +80°C

Short (10 min) exposure: -30 | +110°C

### Advantages of this Glide through the hall Fixed castor:

- ✓ chemical resistance
- ✓ load capacity and shock impact resistant
- ✓ high temperature shifts

## LIV SYSTEMS standard Fixed castor + solid polyamide wheel Ø100 x W35mm for 200kg Prod ID: 31695

ID 31695: Castor overall height 128 mm | 4 mounting holes with distance 80x60 mm | Wheel with plain bearing and solid polyamide wheel with hardness 70±5 Shore D | Glide through the hall, good chemical resistance, high load capacity and shock impact resis

## Product information

- Article code 2-676 A
- SKU 31695
- EAN 3838461316951

## Specifications

The result of our quality is maximum performance!

[Close](#)

[Close](#)



## Product description

standard Wheel with roller bearing and solid polyamide wheel with hardness 70±5 Shore D

Wheel diameter x width: 100 x 35 mm

Axle hole: 12 mm

Hub length: 44 mm

### Approved and tested load capacity

Dynamic 200 kg

Static 250 kg

### Temperature range:

Continuous operation: -25 | +80°C

Short (10 min) exposure: -30 | +110°C

### Advantages of this Glide through the hall wheel:

- ✓ chemical resistance
- ✓ load capacity and shock impact resistant
- ✓ high temperature shifts

## LIV SYSTEMS standard wheel + solid polyamide wheel Ø100 x W35mm for 200kg Prod ID: 66498

ID 66498: standard Wheel with roller bearing and solid polyamide wheel with hardness 70±5 Shore D | Axle hole: 12 mm | Hub length: 44 mm | Glide through the hall, good chemical resistance, high load capacity and shock impact resistant, for high temperature

## Product information

- Article code 2-751 ISO
- SKU 66498
- EAN 3838461664984

## Specifications



## Product description

standard Wheel with plain bearing and solid polyamide wheel with hardness 70±5 Shore D

Wheel diameter x width: 100 x 35 mm

Axle hole: 12 mm

Hub length: 44 mm

### Approved and tested load capacity

Dynamic 200 kg

Static 250 kg

### Temperature range:

Continuous operation: -25 | +80°C

Short (10 min) exposure: -30 | +110°C

### Advantages of this Glide through the hall wheel:

- ✓ chemical resistance
- ✓ load capacity and shock impact resistant
- ✓ high temperature shifts

## LIV SYSTEMS standard wheel + solid polyamide wheel Ø100 x W35mm for 200kg Prod ID: 66714

ID 66714: standard Wheel with plain bearing and solid polyamide wheel with hardness 70±5 Shore D | Axle hole: 12 mm | Hub length: 44 mm | Glide through the hall, good chemical resistance, high load capacity and shock impact resistant, for high temperature

## Product information

- Article code 2-761 ISO
- SKU 66714
- EAN 3838461667145

## Specifications



## Product description

standard Wheel with plain bearing and solid polyamide wheel with hardness 70±5 Shore D

Wheel diameter x width: 100 x 35 mm

Axle hole: 12 mm

Hub length: 44 mm

### Approved and tested load capacity

Dynamic 200 kg

Static 250 kg

### Temperature range:

Continuous operation: -25 | +80°C

Short (10 min) exposure: -30 | +110°C

### Advantages of this Glide through the hall wheel:

- ✓ chemical resistance
- ✓ load capacity and shock impact resistant
- ✓ high temperature shifts

## LIV SYSTEMS standard wheel + solid polyamide wheel Ø100 x W35mm for 200kg Prod ID: 66709

ID 66709: standard Wheel with plain bearing and solid polyamide wheel with hardness 70±5 Shore D | Axle hole: 12 mm | Hub length: 44 mm | Glide through the hall, good chemical resistance, high load capacity and shock impact resistant, for high temperature

## Product information

- Article code 2-761 ISO
- SKU 66709
- EAN 3838461667091

## Specifications



## Product description

standard Wheel with roller bearing and solid polyamide wheel with hardness 70±5 Shore D

Wheel diameter x width: 100 x 35 mm

Axle hole: 12 mm

Hub length: 44 mm

### Approved and tested load capacity

Dynamic 200 kg

Static 250 kg

### Temperature range:

Continuous operation: -25 | +80°C

Short (10 min) exposure: -30 | +110°C

### Advantages of this Glide through the hall wheel:

- ✓ chemical resistance
- ✓ load capacity and shock impact resistant
- ✓ high temperature shifts

## LIV SYSTEMS standard wheel + solid polyamide wheel Ø100 x W35mm for 200kg Prod ID: 66704

ID 66704: standard Wheel with roller bearing and solid polyamide wheel with hardness 70±5 Shore D | Axle hole: 12 mm | Hub length: 44 mm | Glide through the hall, good chemical resistance, high load capacity and shock impact resistant, for high temperature

## Product information

- Article code 2-751 ISO
- SKU 66704
- EAN 3838461667046

## Specifications



## Product description

standard Wheel with ball bearing and solid polyamide wheel with hardness  $70\pm 5$  Shore D

Wheel diameter x width: 100 x 35 mm

Axle hole: 12 mm

Hub length: 44 mm

### Approved and tested load capacity

Dynamic 200 kg

Static 250 kg

### Temperature range:

Continuous operation:  $-25$  |  $+80^{\circ}\text{C}$

Short (10 min) exposure:  $-30$  |  $+110^{\circ}\text{C}$

### Advantages of this Glide through the hall wheel:

- ✓ chemical resistance
- ✓ load capacity and shock impact resistant
- ✓ high temperature shifts

## LIV SYSTEMS standard wheel + solid polyamide wheel $\text{Ø}100$ x W35mm for 200kg Prod ID: 42754

ID 42754: standard Wheel with ball bearing and solid polyamide wheel with hardness  $70\pm 5$  Shore D | Axle hole: 12 mm | Hub length: 44 mm | Glide through the hall, good chemical resistance, high load capacity and shock impact resistant, for high temperature

## Product information

- Article code 2-682-20K
- SKU 42754
- EAN 3838461427541

## Specifications



## Product description

standard Wheel with ball bearing and solid polyamide wheel with hardness  $70\pm 5$  Shore D

Wheel diameter x width: 100 x 35 mm

Axle hole: 12 mm

Hub length: 44 mm

### Approved and tested load capacity

Dynamic 200 kg

Static 250 kg

### Temperature range:

Continuous operation:  $-25$  |  $+80^{\circ}\text{C}$

Short (10 min) exposure:  $-30$  |  $+110^{\circ}\text{C}$

### Advantages of this Glide through the hall wheel:

- ✓ chemical resistance
- ✓ load capacity and shock impact resistant
- ✓ high temperature shifts

## LIV SYSTEMS standard wheel + solid polyamide wheel $\varnothing 100$ x W35mm for 200kg Prod ID: 42753

ID 42753: standard Wheel with ball bearing and solid polyamide wheel with hardness  $70\pm 5$  Shore D | Axle hole: 12 mm | Hub length: 44 mm | Glide through the hall, good chemical resistance, high load capacity and shock impact resistant, for high temperature

## Product information

- Article code 2-682-20K
- SKU 42753
- EAN 3838461427534

## Specifications





## Product description

standard Wheel with ball bearing and solid polyamide wheel with hardness  $70\pm 5$  Shore D

Wheel diameter x width: 100 x 35 mm

Axle hole: 8,5 mm

Hub length: 44 mm

### Approved and tested load capacity

Dynamic 200 kg

Static 250 kg

### Temperature range:

Continuous operation:  $-25$  |  $+80^{\circ}\text{C}$

Short (10 min) exposure:  $-30$  |  $+110^{\circ}\text{C}$

### Advantages of this Glide through the hall wheel:

- ✓ chemical resistance
- ✓ load capacity and shock impact resistant
- ✓ high temperature shifts

## LIV SYSTEMS standard wheel + solid polyamide wheel $\varnothing 100$ x W35mm for 200kg Prod ID: 42463

ID 42463: standard Wheel with ball bearing and solid polyamide wheel with hardness  $70\pm 5$  Shore D | Axle hole: 8,5 mm | Hub length: 44 mm | Glide through the hall, good chemical resistance, high load capacity and shock impact resistant, for high temperature

## Product information

- Article code 2-681-20K
- SKU 42463
- EAN 3838461424632

## Specifications



## Product description

standard Wheel with ball bearing and solid polyamide wheel with hardness  $70\pm 5$  Shore D

Wheel diameter x width: 100 x 35 mm

Axle hole: 8,5 mm

Hub length: 44 mm

### Approved and tested load capacity

Dynamic 200 kg

Static 250 kg

### Temperature range:

Continuous operation:  $-25$  |  $+80^{\circ}\text{C}$

Short (10 min) exposure:  $-30$  |  $+110^{\circ}\text{C}$

### Advantages of this Glide through the hall wheel:

- ✓ chemical resistance
- ✓ load capacity and shock impact resistant
- ✓ high temperature shifts

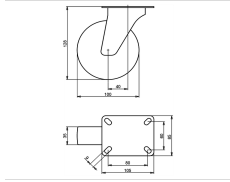
## LIV SYSTEMS standard wheel + solid polyamide wheel $\text{Ø}100$ x W35mm for 200kg Prod ID: 42635

ID 42635: standard Wheel with ball bearing and solid polyamide wheel with hardness  $70\pm 5$  Shore D | Axle hole: 8,5 mm | Hub length: 44 mm | Glide through the hall, good chemical resistance, high load capacity and shock impact resistant, for high temperature

## Product information

- Article code 2-681-20K
- SKU 42635
- EAN 3838461426353

## Specifications



## Product description

standard Swivel castor with an overall height of 128 mm

Wheel diameter x width: 100 x 35 mm

Top plate with 4 mounting holes of 9 mm, mounting hole distance 80x60 mm and top plate outer dimensions: 105x85 mm

Wheel with plain bearing and solid polyamide wheel with hardness 70±5 Shore D.

### Approved and tested load capacity

Dynamic 200 kg

Static 250 kg

### Temperature range:

Continuous operation: -25 | +80°C

Short (10 min) exposure: -30 | +110°C

### Advantages of this Glide through the hall Swivel castor:

- ✓ chemical resistance
- ✓ load capacity and shock impact resistant
- ✓ high temperature shifts

## LIV SYSTEMS standard Swivel castor + solid polyamide wheel Ø100 x W35mm for 200kg Prod ID: 31635

ID 31635: Castor overall height 128 mm | 4 mounting holes with distance 80x60 mm | Wheel with plain bearing and solid polyamide wheel with hardness 70±5 Shore D | Glide through the hall, good chemical resistance, high load capacity and shock impact resis

## Product information

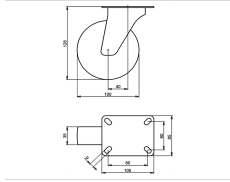
- Article code 2-671 A
- SKU 31635
- EAN 3838461316357

## Specifications

The result of our quality is maximum performance!

[Close](#)

[Close](#)



## Product description

standard Swivel castor with an overall height of 128 mm

Wheel diameter x width: 100 x 35 mm

Top plate with 4 mounting holes of 9 mm, mounting hole distance 80x60 mm and top plate outer dimensions: 105x85 mm

Wheel with roller bearing and solid polyamide wheel with hardness 70±5 Shore D.

### Approved and tested load capacity

Dynamic 200 kg

Static 250 kg

### Temperature range:

Continuous operation: -25 | +80°C

Short (10 min) exposure: -30 | +110°C

### Advantages of this Glide through the hall Swivel castor:

- ✓ chemical resistance
- ✓ load capacity and shock impact resistant
- ✓ high temperature shifts

## LIV SYSTEMS standard Swivel castor + solid polyamide wheel Ø100 x W35mm for 200kg Prod ID: 32383

ID 32383: Castor overall height 128 mm | 4 mounting holes with distance 80x60 mm | Wheel with roller bearing and solid polyamide wheel with hardness 70±5 Shore D |

Glide through the hall, good chemical resistance, high load capacity and shock impact resi

## Product information

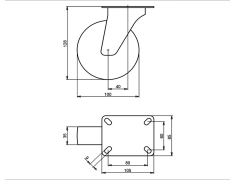
- Article code 2-661 A
- SKU 32383
- EAN 3838461323836

## Specifications

The result of our quality is maximum performance!

[Close](#)

[Close](#)



## Product description

standard Swivel castor with an overall height of 128 mm

Wheel diameter x width: 100 x 35 mm

Top plate with 4 mounting holes of 9 mm, mounting hole distance 80x60 mm and top plate outer dimensions: 105x85 mm

Wheel with ball bearing and solid polyamide wheel with hardness 70±5 Shore D.

### Approved and tested load capacity

Dynamic 200 kg

Static 250 kg

### Temperature range:

Continuous operation: -25 | +80°C

Short (10 min) exposure: -30 | +110°C

### Advantages of this Glide through the hall Swivel castor:

- ✓ chemical resistance
- ✓ load capacity and shock impact resistant
- ✓ high temperature shifts

## LIV SYSTEMS standard Swivel castor + solid polyamide wheel Ø100 x W35mm for 200kg Prod ID: 44023

ID 44023: Castor overall height 128 mm | 4 mounting holes with distance 80x60 mm | Wheel with ball bearing and solid polyamide wheel with hardness 70±5 Shore D | Glide through the hall, good chemical resistance, high load capacity and shock impact resist

## Product information

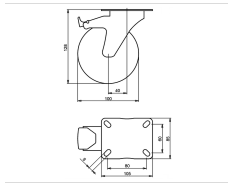
- Article code 2-671-20K
- SKU 44023
- EAN 3838461440236

## Specifications

The result of our quality is maximum performance!

[Close](#)

[Close](#)



## Product description

standard Swivel castor with brake with an overall height of 128 mm  
 Wheel diameter x width: 100 x 35 mm  
 Top plate with 4 mounting holes of 9 mm, mounting hole distance 80x60 mm and top plate outer dimensions: 105x85 mm  
 Wheel with plain bearing and solid polyamide wheel with hardness 70±5 Shore D  
 the double brake system, brakes the turning of the wheel and the swivel rotation.

### Approved and tested load capacity

Dynamic 200 kg  
 Static 250 kg

### Temperature range:

Continuous operation: -25 | +80°C  
 Short (10 min) exposure: -30 | +110°C

### Advantages of this Glide through the hall Swivel castor with brake:

- ✓ chemical resistance
- ✓ load capacity and shock impact resistant
- ✓ high temperature shifts

## LIV SYSTEMS standard Swivel castor with brake + solid polyamide wheel Ø100 x W35mm for 200kg Prod ID: 30445

ID 30445: Castor overall height 128 mm | 4 mounting holes with distance 80x60 mm | Wheel with plain bearing and solid polyamide wheel with hardness 70±5 Shore D | The double brake system, brakes the turning of the wheel and the swivel rotation. | Glide t

## Product information

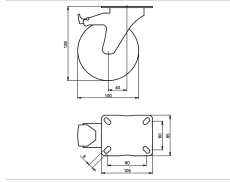
- Article code 2-683 A
- SKU 30445
- EAN 3838461304453

## Specifications

The result of our quality is maximum performance!

[Close](#)

[Close](#)



## Product description

standard Swivel castor with brake with an overall height of 128 mm  
 Wheel diameter x width: 100 x 35 mm  
 Top plate with 4 mounting holes of 9 mm, mounting hole distance 80x60 mm and top plate outer dimensions: 105x85 mm  
 Wheel with roller bearing and solid polyamide wheel with hardness 70±5 Shore D  
 the double brake system, brakes the turning of the wheel and the swivel rotation.

### Approved and tested load capacity

Dynamic 200 kg  
 Static 250 kg

### Temperature range:

Continuous operation: -25 | +80°C  
 Short (10 min) exposure: -30 | +110°C

### Advantages of this Glide through the hall Swivel castor with brake:

- ✓ chemical resistance
- ✓ load capacity and shock impact resistant
- ✓ high temperature shifts

## LIV SYSTEMS standard Swivel castor with brake + solid polyamide wheel Ø100 x W35mm for 200kg Prod ID: 30444

ID 30444: Castor overall height 128 mm | 4 mounting holes with distance 80x60 mm | Wheel with roller bearing and solid polyamide wheel with hardness 70±5 Shore D | The double brake system, brakes the turning of the wheel and the swivel rotation. | Glide

## Product information

- Article code 2-722 A
- SKU 30444
- EAN 3838461304446

## Specifications

The result of our quality is maximum performance!

[Close](#)

[Close](#)



## Product description

standard Swivel castor with brake with an overall height of 128 mm

Wheel diameter x width: 100 x 38 mm

Top plate with 4 mounting holes of 9 mm, mounting hole distance 80x60 mm and top plate outer dimensions: 105x85 mm

Wheel with ball bearing and solid polyamide wheel with hardness 70±5 Shore D  
the double brake system, brakes the turning of the wheel and the swivel rotation.

### Approved and tested load capacity

Dynamic 200 kg

Static 250 kg

### Temperature range:

Continuous operation: -25 | +80°C

Short (10 min) exposure: -30 | +110°C

### Advantages of this Glide through the hall Swivel castor with brake:

- ✓ chemical resistance
- ✓ load capacity and shock impact resistant
- ✓ high temperature shifts

## LIV SYSTEMS standard Swivel castor with brake + solid polyamide wheel

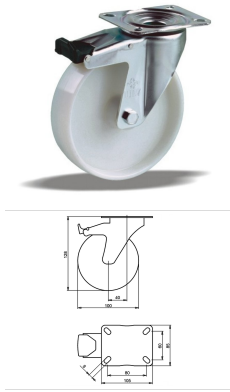
### Ø100 x W38mm for 200kg Prod ID: 42813

ID 42813: Castor overall height 128 mm | 4 mounting holes with distance 80x60 mm | Wheel with ball bearing and solid polyamide wheel with hardness 70±5 Shore D | The double brake system, brakes the turning of the wheel and the swivel rotation. | Glide th

## Product information

- 
- Article code 2-722-20K
  - SKU 42813
  - EAN 3838461428135





## Product description

standard Swivel castor with brake with an overall height of 128 mm  
 Wheel diameter x width: 100 x 35 mm  
 Top plate with 4 mounting holes of 9 mm, mounting hole distance 80x60 mm and top plate outer dimensions: 105x85 mm  
 Wheel with roller bearing and solid polyamide wheel with hardness 70±5 Shore D  
 the double brake system, brakes the turning of the wheel and the swivel rotation.

### Approved and tested load capacity

Dynamic 200 kg  
 Static 250 kg

### Temperature range:

Continuous operation: -25 | +80°C  
 Short (10 min) exposure: -30 | +110°C

### Advantages of this Glide through the hall Swivel castor with brake:

- ✓ chemical resistance
- ✓ load capacity and shock impact resistant
- ✓ high temperature shifts

## LIV SYSTEMS standard Swivel castor with brake + solid polyamide wheel Ø100 x W35mm for 200kg Prod ID: 30493

ID 30493: Castor overall height 128 mm | 4 mounting holes with distance 80x60 mm | Wheel with roller bearing and solid polyamide wheel with hardness 70±5 Shore D | The double brake system, brakes the turning of the wheel and the swivel rotation. | Glide

## Product information

- Article code 2-722 A
- SKU 30493
- EAN 3838461304934

## Specifications

The result of our quality is maximum performance!

[Close](#)

[Close](#)



## Product description

standard Swivel castor with brake with an overall height of 128 mm

Wheel diameter x width: 100 x 38 mm

Top plate with 4 mounting holes of 9 mm, mounting hole distance 80x60 mm and top plate outer dimensions: 105x85 mm

Wheel with ball bearing and solid polypropylene wheel with hardness 70±5 Shore D  
the double brake system, brakes the turning of the wheel and the swivel rotation.

### Approved and tested load capacity

Dynamic 125 kg

Static 150 kg

### Temperature range:

Continuous operation: -25 | +80°C

Short (10 min) exposure: -30 | +110°C

### Advantages of this Glide through the hall Swivel castor with brake:

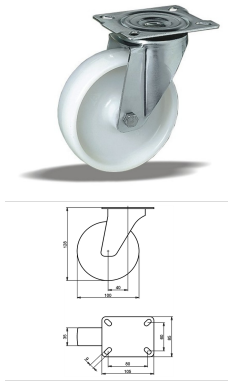
- ✓ chemical resistance
- ✓ load capacity and shock impact resistant
- ✓ high temperature shifts

## LIV SYSTEMS standard Swivel castor with brake + solid polypropylene wheel Ø100 x W38mm for 125kg Prod ID: 42805

ID 42805: Castor overall height 128 mm | 4 mounting holes with distance 80x60 mm | Wheel with ball bearing and solid polypropylene wheel with hardness 70±5 Shore D | The double brake system, brakes the turning of the wheel and the swivel rotation. | Glid

## Product information

- 
- Article code 2-722-20K
  - SKU 42805
  - EAN 3838461428050



## Product description

standard Swivel castor with an overall height of 128 mm

Wheel diameter x width: 100 x 35 mm

Top plate with 4 mounting holes of 9 mm, mounting hole distance 80x60 mm and top plate outer dimensions: 105x85 mm

Wheel with plain bearing and solid polyamide wheel with hardness 70±5 Shore D.

### Approved and tested load capacity

Dynamic 200 kg

Static 250 kg

### Temperature range:

Continuous operation: -25 | +80°C

Short (10 min) exposure: -30 | +110°C

### Advantages of this Glide through the hall Swivel castor:

- ✓ chemical resistance
- ✓ load capacity and shock impact resistant
- ✓ high temperature shifts

## LIV SYSTEMS standard Swivel castor + solid polyamide wheel Ø100 x W35mm for 200kg Prod ID: 31634

ID 31634: Castor overall height 128 mm | 4 mounting holes with distance 80x60 mm | Wheel with plain bearing and solid polyamide wheel with hardness 70±5 Shore D | Glide through the hall, good chemical resistance, high load capacity and shock impact resis

## Product information

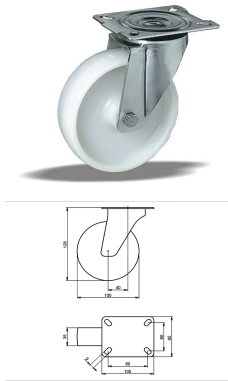
- Article code 2-671 A
- SKU 31634
- EAN 3838461316340

## Specifications

The result of our quality is maximum performance!

[Close](#)

[Close](#)



## Product description

standard Swivel castor with an overall height of 128 mm

Wheel diameter x width: 100 x 35 mm

Top plate with 4 mounting holes of 9 mm, mounting hole distance 80x60 mm and top plate outer dimensions: 105x85 mm

Wheel with roller bearing and solid polyamide wheel with hardness 70±5 Shore D.

### Approved and tested load capacity

Dynamic 200 kg

Static 250 kg

### Temperature range:

Continuous operation: -25 | +80°C

Short (10 min) exposure: -30 | +110°C

### Advantages of this Glide through the hall Swivel castor:

- ✓ chemical resistance
- ✓ load capacity and shock impact resistant
- ✓ high temperature shifts

## LIV SYSTEMS standard Swivel castor + solid polyamide wheel Ø100 x W35mm for 200kg Prod ID: 32384

ID 32384: Castor overall height 128 mm | 4 mounting holes with distance 80x60 mm | Wheel with roller bearing and solid polyamide wheel with hardness 70±5 Shore D |

Glide through the hall, good chemical resistance, high load capacity and shock impact resi

## Product information

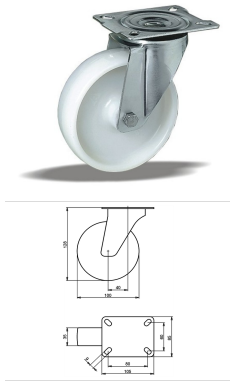
- Article code 2-661 A
- SKU 32384
- EAN 3838461323843

## Specifications

The result of our quality is maximum performance!

[Close](#)

[Close](#)



## Product description

standard Swivel castor with an overall height of 128 mm

Wheel diameter x width: 100 x 35 mm

Top plate with 4 mounting holes of 9 mm, mounting hole distance 80x60 mm and top plate outer dimensions: 105x85 mm

Wheel with ball bearing and solid polyamide wheel with hardness 70±5 Shore D.

### Approved and tested load capacity

Dynamic 200 kg

Static 250 kg

### Temperature range:

Continuous operation: -25 | +80°C

Short (10 min) exposure: -30 | +110°C

### Advantages of this Glide through the hall Swivel castor:

- ✓ chemical resistance
- ✓ load capacity and shock impact resistant
- ✓ high temperature shifts

## LIV SYSTEMS standard Swivel castor + solid polyamide wheel Ø100 x W35mm for 200kg Prod ID: 44024

ID 44024: Castor overall height 128 mm | 4 mounting holes with distance 80x60 mm | Wheel with ball bearing and solid polyamide wheel with hardness 70±5 Shore D | Glide through the hall, good chemical resistance, high load capacity and shock impact resist

## Product information

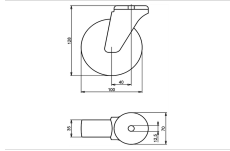
- Article code 2-671-20K
- SKU 44024
- EAN 3838461440243

## Specifications

The result of our quality is maximum performance!

[Close](#)

[Close](#)



## Product description

standard Swivel castor with an overall height of 128 mm

Wheel diameter x width: 100 x 35 mm

Top plate with 4 mounting holes of 12,5 mm, mounting hole distance #\$\$ mm and top plate outer dimensions: 70 mm

Wheel with plain bearing and solid polyamide wheel with hardness 70±5 Shore D.

### Approved and tested load capacity

Dynamic 200 kg

Static 250 kg

### Temperature range:

Continuous operation: -25 | +80°C

Short (10 min) exposure: -30 | +110°C

### Advantages of this Glide through the hall Swivel castor:

- ✓ chemical resistance
- ✓ load capacity and shock impact resistant
- ✓ high temperature shifts

## LIV SYSTEMS standard Swivel castor + solid polyamide wheel Ø100 x W35mm for 200kg Prod ID: 34385

ID 34385: Castor overall height 128 mm | 4 mounting holes with distance #\$\$ mm | Wheel with plain bearing and solid polyamide wheel with hardness 70±5 Shore D | Glide through the hall, good chemical resistance, high load capacity and shock impact resista

## Product information

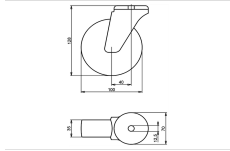
- Article code 2-766 L12
- SKU 34385
- EAN 3838461343858

## Specifications

The result of our quality is maximum performance!

[Close](#)

[Close](#)



## Product description

standard Swivel castor with an overall height of 128 mm

Wheel diameter x width: 100 x 35 mm

Top plate with 4 mounting holes of 12,5 mm, mounting hole distance #\$\$ mm and top plate outer dimensions: 70 mm

Wheel with roller bearing and solid polyamide wheel with hardness 70±5 Shore D.

### Approved and tested load capacity

Dynamic 200 kg

Static 250 kg

### Temperature range:

Continuous operation: -25 | +80°C

Short (10 min) exposure: -30 | +110°C

### Advantages of this Glide through the hall Swivel castor:

- ✓ chemical resistance
- ✓ load capacity and shock impact resistant
- ✓ high temperature shifts

## LIV SYSTEMS standard Swivel castor + solid polyamide wheel Ø100 x W35mm for 200kg Prod ID: 34384

ID 34384: Castor overall height 128 mm | 4 mounting holes with distance #\$\$ mm | Wheel with roller bearing and solid polyamide wheel with hardness 70±5 Shore D | Glide through the hall, good chemical resistance, high load capacity and shock impact resist

## Product information

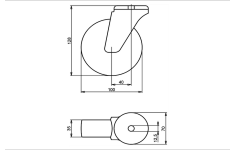
- Article code 2-756 L12
- SKU 34384
- EAN 3838461343841

## Specifications

The result of our quality is maximum performance!

[Close](#)

[Close](#)



## Product description

standard Swivel castor with an overall height of 128 mm

Wheel diameter x width: 100 x 35 mm

Top plate with 4 mounting holes of 12,5 mm, mounting hole distance #\$\$ mm and top plate outer dimensions: 70 mm

Wheel with ball bearing and solid polyamide wheel with hardness 70±5 Shore D.

### Approved and tested load capacity

Dynamic 200 kg

Static 250 kg

### Temperature range:

Continuous operation: -25 | +80°C

Short (10 min) exposure: -30 | +110°C

### Advantages of this Glide through the hall Swivel castor:

- ✓ chemical resistance
- ✓ load capacity and shock impact resistant
- ✓ high temperature shifts

## LIV SYSTEMS standard Swivel castor + solid polyamide wheel Ø100 x W35mm for 200kg Prod ID: 44039

ID 44039: Castor overall height 128 mm | 4 mounting holes with distance #\$\$ mm | Wheel with ball bearing and solid polyamide wheel with hardness 70±5 Shore D | Glide through the hall, good chemical resistance, high load capacity and shock impact resistant

## Product information

- Article code 2-766-20K
- SKU 44039
- EAN 3838461440397

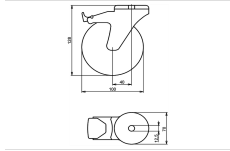
## Specifications

The result of our quality is maximum performance!

[Close](#)

[Close](#)





## Product description

standard Swivel castor with brake with an overall height of 128 mm  
 Wheel diameter x width: 100 x 35 mm  
 Top plate with 4 mounting holes of 12,5 mm, mounting hole distance #\$\$ mm and top plate outer dimensions: 70 mm  
 Wheel with plain bearing and solid polyamide wheel with hardness 70±5 Shore D  
 the double brake system, brakes the turning of the wheel and the swivel rotation.

### Approved and tested load capacity

Dynamic 200 kg  
 Static 250 kg

### Temperature range:

Continious operation: -25 | +80°C  
 Short (10 min) exposure: -30 | +110°C

### Advantages of this Glide through the hall Swivel castor with brake:

- ✓ chemical resistance
- ✓ load capacity and shock impact resistant
- ✓ high temperature shifts

## LIV SYSTEMS standard Swivel castor with brake + solid polyamide wheel Ø100 x W35mm for 200kg Prod ID: 34634

ID 34634: Castor overall height 128 mm | 4 mounting holes with distance #\$\$ mm | Wheel with plain bearing and solid polyamide wheel with hardness 70±5 Shore D | The double brake system, brakes the turning of the wheel and the swivel rotation. | Glide thr

## Product information

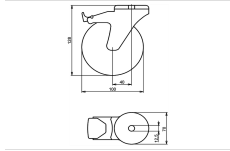
- Article code 2-794 L12
- SKU 34634
- EAN 3838461346347

## Specifications

The result of our quality is maximum performance!

[Close](#)

[Close](#)



## Product description

standard Swivel castor with brake with an overall height of 128 mm  
 Wheel diameter x width: 100 x 35 mm  
 Top plate with 4 mounting holes of 12,5 mm, mounting hole distance #\$\$ mm and top plate outer dimensions: 70 mm  
 Wheel with roller bearing and solid polyamide wheel with hardness 70±5 Shore D  
 the double brake system, brakes the turning of the wheel and the swivel rotation.

### Approved and tested load capacity

Dynamic 200 kg  
 Static 250 kg

### Temperature range:

Continuous operation: -25 | +80°C  
 Short (10 min) exposure: -30 | +110°C

### Advantages of this Glide through the hall Swivel castor with brake:

- ✓ chemical resistance
- ✓ load capacity and shock impact resistant
- ✓ high temperature shifts

## LIV SYSTEMS standard Swivel castor with brake + solid polyamide wheel Ø100 x W35mm for 200kg Prod ID: 34633

ID 34633: Castor overall height 128 mm | 4 mounting holes with distance #\$\$ mm | Wheel with roller bearing and solid polyamide wheel with hardness 70±5 Shore D | The double brake system, brakes the turning of the wheel and the swivel rotation. | Glide th

## Product information

- Article code 2-789 L12
- SKU 34633
- EAN 3838461346330

## Specifications

The result of our quality is maximum performance!

[Close](#)

[Close](#)



## Product description

standard Swivel castor with brake with an overall height of 128 mm

Wheel diameter x width: 100 x 35 mm

Top plate with 4 mounting holes of 12,5 mm, mounting hole distance #\$\$% mm and top plate outer dimensions: 70 mm

Wheel with ball bearing and solid polyamide wheel with hardness 70±5 Shore D  
the double brake system, brakes the turning of the wheel and the swivel rotation.

### Approved and tested load capacity

Dynamic 200 kg

Static 250 kg

### Temperature range:

Continuous operation: -25 | +80°C

Short (10 min) exposure: -30 | +110°C

### Advantages of this Glide through the hall Swivel castor with brake:

- ✓ chemical resistance
- ✓ load capacity and shock impact resistant
- ✓ high temperature shifts

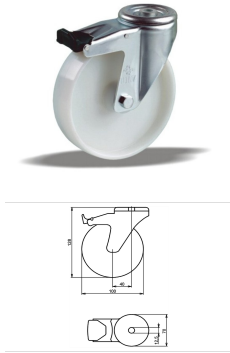
## LIV SYSTEMS standard Swivel castor with brake + solid polyamide wheel

### Ø100 x W35mm for 200kg Prod ID: 42893

ID 42893: Castor overall height 128 mm | 4 mounting holes with distance #\$\$% mm | Wheel with ball bearing and solid polyamide wheel with hardness 70±5 Shore D | The double brake system, brakes the turning of the wheel and the swivel rotation. | Glide thro

## Product information

- 
- Article code 2-789-20K
  - SKU 42893
  - EAN 3838461428937



## Product description

standard Swivel castor with brake with an overall height of 128 mm  
 Wheel diameter x width: 100 x 35 mm  
 Top plate with 4 mounting holes of 12,5 mm, mounting hole distance #\$\$ mm and top plate outer dimensions: 70 mm  
 Wheel with plain bearing and solid polyamide wheel with hardness 70±5 Shore D  
 the double brake system, brakes the turning of the wheel and the swivel rotation.

### Approved and tested load capacity

Dynamic 200 kg  
 Static 250 kg

### Temperature range:

Continuous operation: -25 | +80°C  
 Short (10 min) exposure: -30 | +110°C

### Advantages of this Glide through the hall Swivel castor with brake:

- ✓ chemical resistance
- ✓ load capacity and shock impact resistant
- ✓ high temperature shifts

## LIV SYSTEMS standard Swivel castor with brake + solid polyamide wheel Ø100 x W35mm for 200kg Prod ID: 34723

ID 34723: Castor overall height 128 mm | 4 mounting holes with distance #\$\$ mm | Wheel with plain bearing and solid polyamide wheel with hardness 70±5 Shore D | The double brake system, brakes the turning of the wheel and the swivel rotation. | Glide thr

## Product information

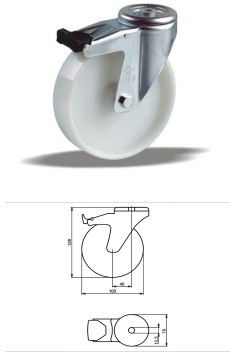
- Article code 2-794 L12
- SKU 34723
- EAN 3838461347238

## Specifications

The result of our quality is maximum performance!

[Close](#)

[Close](#)



## Product description

standard Swivel castor with brake with an overall height of 128 mm  
 Wheel diameter x width: 100 x 35 mm  
 Top plate with 4 mounting holes of 12,5 mm, mounting hole distance #\$\$ mm and top plate outer dimensions: 70 mm  
 Wheel with roller bearing and solid polyamide wheel with hardness 70±5 Shore D  
 the double brake system, brakes the turning of the wheel and the swivel rotation.

### Approved and tested load capacity

Dynamic 200 kg  
 Static 250 kg

### Temperature range:

Continuous operation: -25 | +80°C  
 Short (10 min) exposure: -30 | +110°C

### Advantages of this Glide through the hall Swivel castor with brake:

- ✓ chemical resistance
- ✓ load capacity and shock impact resistant
- ✓ high temperature shifts

## LIV SYSTEMS standard Swivel castor with brake + solid polyamide wheel Ø100 x W35mm for 200kg Prod ID: 34715

ID 34715: Castor overall height 128 mm | 4 mounting holes with distance #\$\$ mm | Wheel with roller bearing and solid polyamide wheel with hardness 70±5 Shore D | The double brake system, brakes the turning of the wheel and the swivel rotation. | Glide th

## Product information

- Article code 2-789 L12
- SKU 34715
- EAN 3838461347153

## Specifications

The result of our quality is maximum performance!

[Close](#)

[Close](#)



## Product description

standard Swivel castor with brake with an overall height of 128 mm

Wheel diameter x width: 100 x 35 mm

Top plate with 4 mounting holes of 12,5 mm, mounting hole distance #\$\$ mm and top plate outer dimensions: 70 mm

Wheel with ball bearing and solid polyamide wheel with hardness 70±5 Shore D  
the double brake system, brakes the turning of the wheel and the swivel rotation.

### Approved and tested load capacity

Dynamic 200 kg

Static 250 kg

### Temperature range:

Continuous operation: -25 | +80°C

Short (10 min) exposure: -30 | +110°C

### Advantages of this Glide through the hall Swivel castor with brake:

- ✓ chemical resistance
- ✓ load capacity and shock impact resistant
- ✓ high temperature shifts

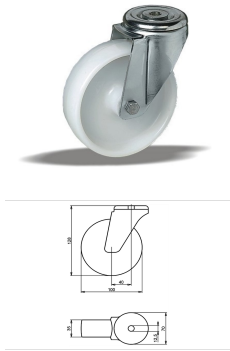
## LIV SYSTEMS standard Swivel castor with brake + solid polyamide wheel

### Ø100 x W35mm for 200kg Prod ID: 42885

ID 42885: Castor overall height 128 mm | 4 mounting holes with distance #\$\$ mm | Wheel with ball bearing and solid polyamide wheel with hardness 70±5 Shore D | The double brake system, brakes the turning of the wheel and the swivel rotation. | Glide thro

## Product information

- 
- Article code 2-789-20K
  - SKU 42885
  - EAN 3838461428852



## Product description

standard Swivel castor with an overall height of 128 mm

Wheel diameter x width: 100 x 35 mm

Top plate with 4 mounting holes of 12,5 mm, mounting hole distance #\$\$ mm and top plate outer dimensions: 70 mm

Wheel with plain bearing and solid polyamide wheel with hardness 70±5 Shore D.

### Approved and tested load capacity

Dynamic 200 kg

Static 250 kg

### Temperature range:

Continuous operation: -25 | +80°C

Short (10 min) exposure: -30 | +110°C

### Advantages of this Glide through the hall Swivel castor:

- ✓ chemical resistance
- ✓ load capacity and shock impact resistant
- ✓ high temperature shifts

## LIV SYSTEMS standard Swivel castor + solid polyamide wheel Ø100 x W35mm for 200kg Prod ID: 34464

ID 34464: Castor overall height 128 mm | 4 mounting holes with distance #\$\$ mm | Wheel with plain bearing and solid polyamide wheel with hardness 70±5 Shore D | Glide through the hall, good chemical resistance, high load capacity and shock impact resistant

## Product information

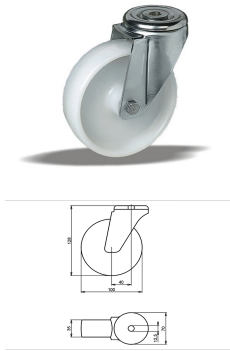
- Article code 2-766 L12
- SKU 34464
- EAN 3838461344640

## Specifications

The result of our quality is maximum performance!

[Close](#)

[Close](#)



## Product description

standard Swivel castor with an overall height of 128 mm

Wheel diameter x width: 100 x 35 mm

Top plate with 4 mounting holes of 12,5 mm, mounting hole distance #\$\$ mm and top plate outer dimensions: 70 mm

Wheel with roller bearing and solid polyamide wheel with hardness 70±5 Shore D.

### Approved and tested load capacity

Dynamic 200 kg

Static 250 kg

### Temperature range:

Continuous operation: -25 | +80°C

Short (10 min) exposure: -30 | +110°C

### Advantages of this Glide through the hall Swivel castor:

- ✓ chemical resistance
- ✓ load capacity and shock impact resistant
- ✓ high temperature shifts

## LIV SYSTEMS standard Swivel castor + solid polyamide wheel Ø100 x W35mm for 200kg Prod ID: 34463

ID 34463: Castor overall height 128 mm | 4 mounting holes with distance #\$\$ mm | Wheel with roller bearing and solid polyamide wheel with hardness 70±5 Shore D | Glide through the hall, good chemical resistance, high load capacity and shock impact resist

## Product information

- Article code 2-756 L12
- SKU 34463
- EAN 3838461344633

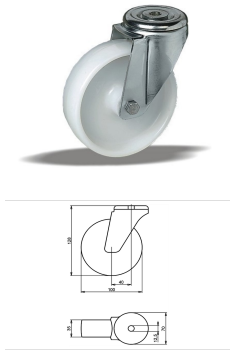
## Specifications

The result of our quality is maximum performance!

[Close](#)

[Close](#)





## Product description

standard Swivel castor with an overall height of 128 mm

Wheel diameter x width: 100 x 35 mm

Top plate with 4 mounting holes of 12,5 mm, mounting hole distance #\$\$ mm and top plate outer dimensions: 70 mm

Wheel with ball bearing and solid polyamide wheel with hardness 70±5 Shore D.

### Approved and tested load capacity

Dynamic 200 kg

Static 250 kg

### Temperature range:

Continuous operation: -25 | +80°C

Short (10 min) exposure: -30 | +110°C

### Advantages of this Glide through the hall Swivel castor:

- ✓ chemical resistance
- ✓ load capacity and shock impact resistant
- ✓ high temperature shifts

## LIV SYSTEMS standard Swivel castor + solid polyamide wheel Ø100 x W35mm for 200kg Prod ID: 44040

ID 44040: Castor overall height 128 mm | 4 mounting holes with distance #\$\$ mm | Wheel with ball bearing and solid polyamide wheel with hardness 70±5 Shore D | Glide through the hall, good chemical resistance, high load capacity and shock impact resistant

## Product information

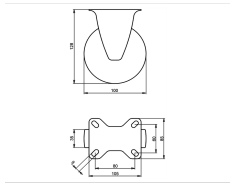
- Article code 2-766-20K
- SKU 44040
- EAN 3838461440403

## Specifications

The result of our quality is maximum performance!

[Close](#)

[Close](#)



## Product description

standard Fixed castor with an overall height of 128 mm

Wheel diameter x width: 100 x 35 mm

Top plate with 4 mounting holes of 9 mm, mounting hole distance 80x60 mm and top plate outer dimensions: 105x85 mm

Wheel with plain bearing and solid polyamide wheel with hardness 70±5 Shore D.

### Approved and tested load capacity

Dynamic 200 kg

Static 250 kg

### Temperature range:

Continuous operation: -25 | +80°C

Short (10 min) exposure: -30 | +110°C

### Advantages of this Glide through the hall Fixed castor:

- ✓ chemical resistance
- ✓ load capacity and shock impact resistant
- ✓ high temperature shifts

## LIV SYSTEMS standard Fixed castor + solid polyamide wheel Ø100 x W35mm for 200kg Prod ID: 31703

ID 31703: Castor overall height 128 mm | 4 mounting holes with distance 80x60 mm | Wheel with plain bearing and solid polyamide wheel with hardness 70±5 Shore D | Glide through the hall, good chemical resistance, high load capacity and shock impact resis

## Product information

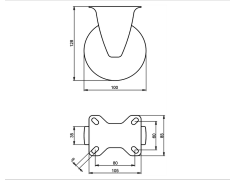
- Article code 2-676 A
- SKU 31703
- EAN 3838461317033

## Specifications

The result of our quality is maximum performance!

[Close](#)

[Close](#)



## Product description

standard Fixed castor with an overall height of 128 mm

Wheel diameter x width: 100 x 35 mm

Top plate with 4 mounting holes of 9 mm, mounting hole distance 80x60 mm and top plate outer dimensions: 105x85 mm

Wheel with roller bearing and solid polyamide wheel with hardness 70±5 Shore D.

### Approved and tested load capacity

Dynamic 200 kg

Static 250 kg

### Temperature range:

Continuous operation: -25 | +80°C

Short (10 min) exposure: -30 | +110°C

### Advantages of this Glide through the hall Fixed castor:

- ✓ chemical resistance
- ✓ load capacity and shock impact resistant
- ✓ high temperature shifts

## LIV SYSTEMS standard Fixed castor + solid polyamide wheel Ø100 x W35mm for 200kg Prod ID: 32475

ID 32475: Castor overall height 128 mm | 4 mounting holes with distance 80x60 mm | Wheel with roller bearing and solid polyamide wheel with hardness 70±5 Shore D | Glide through the hall, good chemical resistance, high load capacity and shock impact resi

## Product information

- Article code 2-666 A
- SKU 32475
- EAN 3838461324758

## Specifications

The result of our quality is maximum performance!

[Close](#)

[Close](#)



## Product description

standard Fixed castor with an overall height of 128 mm

Wheel diameter x width: 100 x 35 mm

Top plate with 4 mounting holes of 9 mm, mounting hole distance 80x60 mm and top plate outer dimensions: 105x85 mm

Wheel with ball bearing and solid polyamide wheel with hardness 70±5 Shore D.

### Approved and tested load capacity

Dynamic 200 kg

Static 250 kg

### Temperature range:

Continuous operation: -25 | +80°C

Short (10 min) exposure: -30 | +110°C

### Advantages of this Glide through the hall Fixed castor:

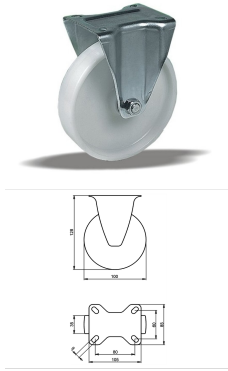
- ✓ chemical resistance
- ✓ load capacity and shock impact resistant
- ✓ high temperature shifts

## LIV SYSTEMS standard Fixed castor + solid polyamide wheel Ø100 x W35mm for 200kg Prod ID: 42853

ID 42853: Castor overall height 128 mm | 4 mounting holes with distance 80x60 mm | Wheel with ball bearing and solid polyamide wheel with hardness 70±5 Shore D | Glide through the hall, good chemical resistance, high load capacity and shock impact resist

## Product information

- Article code 2-666-20K
- SKU 42853
- EAN 3838461428531



## Product description

standard Fixed castor with an overall height of 128 mm

Wheel diameter x width: 100 x 35 mm

Top plate with 4 mounting holes of 9 mm, mounting hole distance 80x60 mm and top plate outer dimensions: 105x85 mm

Wheel with roller bearing and solid polyamide wheel with hardness 70±5 Shore D.

### Approved and tested load capacity

Dynamic 200 kg

Static 250 kg

### Temperature range:

Continuous operation: -25 | +80°C

Short (10 min) exposure: -30 | +110°C

### Advantages of this Glide through the hall Fixed castor:

- ✓ chemical resistance
- ✓ load capacity and shock impact resistant
- ✓ high temperature shifts

## LIV SYSTEMS standard Fixed castor + solid polyamide wheel Ø100 x W35mm for 200kg Prod ID: 32483

ID 32483: Castor overall height 128 mm | 4 mounting holes with distance 80x60 mm | Wheel with roller bearing and solid polyamide wheel with hardness 70±5 Shore D | Glide through the hall, good chemical resistance, high load capacity and shock impact resi

## Product information

- Article code 2-666 A
- SKU 32483
- EAN 3838461324833

## Specifications

The result of our quality is maximum performance!

[Close](#)

[Close](#)



## Product description

standard Fixed castor with an overall height of 128 mm

Wheel diameter x width: 100 x 35 mm

Top plate with 4 mounting holes of 9 mm, mounting hole distance 80x60 mm and top plate outer dimensions: 105x85 mm

Wheel with ball bearing and solid polyamide wheel with hardness 70±5 Shore D.

### Approved and tested load capacity

Dynamic 200 kg

Static 250 kg

### Temperature range:

Continuous operation: -25 | +80°C

Short (10 min) exposure: -30 | +110°C

### Advantages of this Glide through the hall Fixed castor:

- ✓ chemical resistance
- ✓ load capacity and shock impact resistant
- ✓ high temperature shifts

## LIV SYSTEMS standard Fixed castor + solid polyamide wheel Ø100 x W35mm for 200kg Prod ID: 42845

ID 42845: Castor overall height 128 mm | 4 mounting holes with distance 80x60 mm | Wheel with ball bearing and solid polyamide wheel with hardness 70±5 Shore D | Glide through the hall, good chemical resistance, high load capacity and shock impact resist

## Product information

- Article code 2-666-20K
- SKU 42845
- EAN 3838461428456

Алматы (7273)495-231  
Ангарск (3955)60-70-56  
Архангельск (8182)63-90-72  
Астрахань (8512)99-46-04  
Барнаул (3852)73-04-60  
Белгород (4722)40-23-64  
Благовещенск (4162)22-76-07  
Брянск (4832)59-03-52  
Владивосток (423)249-28-31  
Владикавказ (8672)28-90-48  
Владимир (4922)49-43-18  
Волгоград (844)278-03-48  
Вологда (8172)26-41-59  
Воронеж (473)204-51-73  
Екатеринбург (343)384-55-89

Иваново (4932)77-34-06  
Ижевск (3412)26-03-58  
Иркутск (395)279-98-46  
Казань (843)206-01-48  
Калининград (4012)72-03-81  
Калуга (4842)92-23-67  
Кемерово (3842)65-04-62  
Киров (8332)68-02-04  
Коломна (4966)23-41-49  
Кострома (4942)77-07-48  
Краснодар (861)203-40-90  
Красноярск (391)204-63-61  
Курск (4712)77-13-04  
Курган (3522)50-90-47  
Липецк (4742)52-20-81

Магнитогорск (3519)55-03-13  
Москва (495)268-04-70  
Мурманск (8152)59-64-93  
Набережные Челны (8552)20-53-41  
Нижегород (831)429-08-12  
Новокузнецк (3843)20-46-81  
Ноябрьск (3496)41-32-12  
Новосибирск (383)227-86-73  
Омск (3812)21-46-40  
Орел (4862)44-53-42  
Оренбург (3532)37-68-04  
Пенза (8412)22-31-16  
Петрозаводск (8142)55-98-37  
Псков (8112)59-10-37  
Пермь (342)205-81-47

Ростов-на-Дону (863)308-18-15  
Рязань (4912)46-61-64  
Самара (846)206-03-16  
Санкт-Петербург (812)309-46-40  
Саратов (845)249-38-78  
Севастополь (8692)22-31-93  
Саранск (8342)22-96-24  
Симферополь (3652)67-13-56  
Смоленск (4812)29-41-54  
Сочи (862)225-72-31  
Ставрополь (8652)20-65-13  
Сургут (3462)77-98-35  
Сыктывкар (8212)25-95-17  
Тамбов (4752)50-40-97  
Тверь (4822)63-31-35

Тольятти (8482)63-91-07  
Томск (3822)98-41-53  
Тула (4872)33-79-87  
Тюмень (3452)66-21-18  
Ульяновск (8422)24-23-59  
Улан-Удэ (3012)59-97-51  
Уфа (347)229-48-12  
Хабаровск (4212)92-98-04  
Чебоксары (8352)28-53-07  
Челябинск (351)202-03-61  
Череповец (8202)49-02-64  
Чита (3022)38-34-83  
Якутск (4112)23-90-97  
Ярославль (4852)69-52-93

Россия +7(495)268-04-70

Казахстан +7(7172)727-132

Киргизия +996(312)96-26-47

<https://liv.nt-rt.ru/> || [vis@nt-rt.ru](https://vis@nt-rt.ru)