

Алматы (7273)495-231
Ангарск (3955)60-70-56
Архангельск (8182)63-90-72
Астрахань (8512)99-46-04
Барнаул (3852)73-04-64
Белгород (4722)40-23-64
Благовещенск (4162)22-76-07
Брянск (4832)59-03-52
Владивосток (423)249-28-31
Владикавказ (8672)28-90-48
Владимир (4922)49-43-18
Волгоград (844)278-03-48
Вологда (8172)26-41-59
Воронеж (473)204-51-73
Екатеринбург (343)384-55-89

Иваново (4932)77-34-06
Ижевск (3412)26-03-58
Иркутск (395)279-98-46
Казань (843)206-01-48
Калининград (4012)72-03-81
Калуга (4842)92-23-67
Кемерово (3842)65-04-62
Киров (8332)68-02-04
Коломна (4966)23-41-49
Кострома (4942)77-07-48
Краснодар (861)203-40-90
Красноярск (391)204-63-61
Курск (4712)77-13-04
Курган (3522)50-90-47
Липецк (4742)52-20-81

Магнитогорск (3519)55-03-13
Москва (495)268-04-70
Мурманск (8152)59-64-93
Набережные Челны (8552)20-53-41
Нижний Новгород (831)429-08-12
Новокузнецк (3843)20-46-81
Ноябрьск (3496)41-32-12
Новосибирск (383)227-86-73
Омск (3812)21-46-40
Орел (4862)44-53-42
Оренбург (3532)37-68-04
Пенза (8412)22-31-16
Петрозаводск (8142)55-98-37
Псков (8112)59-10-37
Пермь (342)205-81-47

Ростов-на-Дону (863)308-18-15
Рязань (4912)46-61-64
Самара (846)206-03-16
Санкт-Петербург (812)309-46-40
Саратов (845)249-38-78
Севастополь (8692)22-31-93
Саранск (8342)22-96-24
Симферополь (3652)67-13-56
Смоленск (4812)29-41-54
Сочи (862)225-72-31
Ставрополь (8652)20-65-13
Сургут (3462)77-98-35
Сыктывкар (8212)25-95-17
Тамбов (4752)50-40-97
Тверь (4822)63-31-35

Тольятти (8482)63-91-07
Томск (3822)98-41-53
Тула (4872)33-79-87
Тюмень (3452)66-21-18
Ульяновск (8422)24-23-59
Улан-Удэ (3012)59-97-51
Уфа (347)229-48-12
Хабаровск (4212)92-98-04
Чебоксары (8352)28-53-07
Челябинск (351)202-03-61
Череповец (8202)49-02-64
Чита (3022)38-34-83
Якутск (4112)23-90-97
Ярославль (4852)69-52-93

Россия +7(495)268-04-70

Казахстан +7(7172)727-132

Киргизия +996(312)96-26-47

<https://liv.nt-rt.ru/> || vis@nt-rt.ru



Product description

standard Wheel with plain bearing and solid polyamide wheel with hardness 70±5 Shore D

Wheel diameter x width: 125 x 38 mm

Axle hole: 12 mm

Hub length: 44 mm

Approved and tested load capacity

Dynamic 250 kg

Static 310 kg

Temperature range:

Continuous operation: -25 | +80°C

Short (10 min) exposure: -30 | +110°C

Advantages of this Glide through the hall wheel:

- ✓ chemical resistance
- ✓ load capacity and shock impact resistant
- ✓ high temperature shifts

LIV SYSTEMS standard wheel + solid polyamide wheel Ø125 x W38mm for 250kg Prod ID: 66715

ID 66715: standard Wheel with plain bearing and solid polyamide wheel with hardness 70±5 Shore D | Axle hole: 12 mm | Hub length: 44 mm | Glide through the hall, good chemical resistance, high load capacity and shock impact resistant, for high temperature

Product information

- Article code 2-762 ISO
- SKU 66715
- EAN 3838461667152



Product description

standard Wheel with ball bearing and solid polyamide wheel with hardness 70 ± 5 Shore D

Wheel diameter x width: 125 x 38 mm

Axle hole: 8,5 mm

Hub length: 44 mm

Approved and tested load capacity

Dynamic 250 kg

Static 310 kg

Temperature range:

Continuous operation: -25 | $+80^{\circ}\text{C}$

Short (10 min) exposure: -30 | $+110^{\circ}\text{C}$

Advantages of this Glide through the hall wheel:

- ✓ chemical resistance
- ✓ load capacity and shock impact resistant
- ✓ high temperature shifts

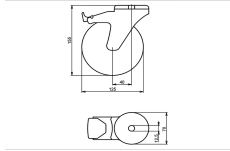
LIV SYSTEMS standard wheel + solid polyamide wheel $\varnothing 125$ x W38mm for 250kg Prod ID: 42775

ID 42775: standard Wheel with ball bearing and solid polyamide wheel with hardness 70 ± 5 Shore D | Axle hole: 8,5 mm | Hub length: 44 mm | Glide through the hall, good chemical resistance, high load capacity and shock impact resistant, for high temperature

Product information

- Article code 2-681-25K
- SKU 42775
- EAN 3838461427756

Specifications



Product description

standard Swivel castor with brake with an overall height of 155 mm
Wheel diameter x width: 125 x 38 mm
Top plate with 4 mounting holes of 12,5 mm, mounting hole distance #\$\$ mm and top plate outer dimensions: 70 mm
Wheel with roller bearing and solid polyamide wheel with hardness 70±5 Shore D
the double brake system, brakes the turning of the wheel and the swivel rotation.

Approved and tested load capacity

Dynamic 250 kg
Static 310 kg

Temperature range:

Continuous operation: -25 | +80°C
Short (10 min) exposure: -30 | +110°C

Advantages of this Glide through the hall Swivel castor with brake:

- ✓ chemical resistance
- ✓ load capacity and shock impact resistant
- ✓ high temperature shifts

LIV SYSTEMS standard Swivel castor with brake + solid polyamide wheel Ø125 x W38mm for 250kg Prod ID: 34635

ID 34635: Castor overall height 155 mm | 4 mounting holes with distance #\$\$ mm | Wheel with roller bearing and solid polyamide wheel with hardness 70±5 Shore D | The double brake system, brakes the turning of the wheel and the swivel rotation. | Glide th

Product information

- Article code 2-790 L12
- SKU 34635
- EAN 3838461346354

Specifications

The result of our quality is maximum performance!

[Close](#)

[Close](#)



Product description

standard Swivel castor with brake with an overall height of 155 mm

Wheel diameter x width: 125 x 38 mm

Top plate with 4 mounting holes of 12,5 mm, mounting hole distance #\$\$% mm and top plate outer dimensions: 70 mm

Wheel with ball bearing and solid polyamide wheel with hardness 70±5 Shore D
the double brake system, brakes the turning of the wheel and the swivel rotation.

Approved and tested load capacity

Dynamic 250 kg

Static 310 kg

Temperature range:

Continuous operation: -25 | +80°C

Short (10 min) exposure: -30 | +110°C

Advantages of this Glide through the hall Swivel castor with brake:

- ✓ chemical resistance
- ✓ load capacity and shock impact resistant
- ✓ high temperature shifts

LIV SYSTEMS standard Swivel castor with brake + solid polyamide wheel

Ø125 x W38mm for 250kg Prod ID: 42914

ID 42914: Castor overall height 155 mm | 4 mounting holes with distance #\$\$% mm | Wheel with ball bearing and solid polyamide wheel with hardness 70±5 Shore D | The double brake system, brakes the turning of the wheel and the swivel rotation. | Glide thro

Product information

- 
- Article code 2-790-25K
 - SKU 42914
 - EAN 3838461429149



Product description

standard Wheel with roller bearing and solid polyamide wheel with hardness 70±5 Shore D

Wheel diameter x width: 125 x 38 mm

Axle hole: 12 mm

Hub length: 44 mm

Approved and tested load capacity

Dynamic 250 kg

Static 310 kg

Temperature range:

Continuous operation: -25 | +80°C

Short (10 min) exposure: -30 | +110°C

Advantages of this Glide through the hall wheel:

- ✓ chemical resistance
- ✓ load capacity and shock impact resistant
- ✓ high temperature shifts

LIV SYSTEMS standard wheel + solid polyamide wheel Ø125 x W38mm for 250kg Prod ID: 66499

ID 66499: standard Wheel with roller bearing and solid polyamide wheel with hardness 70±5 Shore D | Axle hole: 12 mm | Hub length: 44 mm | Glide through the hall, good chemical resistance, high load capacity and shock impact resistant, for high temperature

Product information

- Article code 2-752 ISO
- SKU 66499
- EAN 3838461664991

Specifications



Product description

standard Wheel with plain bearing and solid polyamide wheel with hardness 70±5 Shore D

Wheel diameter x width: 125 x 38 mm

Axle hole: 12 mm

Hub length: 44 mm

Approved and tested load capacity

Dynamic 250 kg

Static 310 kg

Temperature range:

Continuous operation: -25 | +80°C

Short (10 min) exposure: -30 | +110°C

Advantages of this Glide through the hall wheel:

- ✓ chemical resistance
- ✓ load capacity and shock impact resistant
- ✓ high temperature shifts

LIV SYSTEMS standard wheel + solid polyamide wheel Ø125 x W38mm for 250kg Prod ID: 66710

ID 66710: standard Wheel with plain bearing and solid polyamide wheel with hardness 70±5 Shore D | Axle hole: 12 mm | Hub length: 44 mm | Glide through the hall, good chemical resistance, high load capacity and shock impact resistant, for high temperature

Product information

- Article code 2-762 ISO
- SKU 66710
- EAN 3838461667107

Specifications



Product description

standard Wheel with roller bearing and solid polyamide wheel with hardness 70±5 Shore D

Wheel diameter x width: 125 x 38 mm

Axle hole: 12 mm

Hub length: 44 mm

Approved and tested load capacity

Dynamic 250 kg

Static 310 kg

Temperature range:

Continuous operation: -25 | +80°C

Short (10 min) exposure: -30 | +110°C

Advantages of this Glide through the hall wheel:

- ✓ chemical resistance
- ✓ load capacity and shock impact resistant
- ✓ high temperature shifts

LIV SYSTEMS standard wheel + solid polyamide wheel Ø125 x W38mm for 250kg Prod ID: 66705

ID 66705: standard Wheel with roller bearing and solid polyamide wheel with hardness 70±5 Shore D | Axle hole: 12 mm | Hub length: 44 mm | Glide through the hall, good chemical resistance, high load capacity and shock impact resistant, for high temperature

Product information

- Article code 2-752 ISO
- SKU 66705
- EAN 3838461667053

Specifications



Product description

standard Wheel with ball bearing and solid polyamide wheel with hardness 70 ± 5 Shore D

Wheel diameter x width: 125 x 38 mm

Axle hole: 12 mm

Hub length: 44 mm

Approved and tested load capacity

Dynamic 250 kg

Static 310 kg

Temperature range:

Continuous operation: -25 | $+80^{\circ}\text{C}$

Short (10 min) exposure: -30 | $+110^{\circ}\text{C}$

Advantages of this Glide through the hall wheel:

- ✓ chemical resistance
- ✓ load capacity and shock impact resistant
- ✓ high temperature shifts

LIV SYSTEMS standard wheel + solid polyamide wheel $\varnothing 125$ x W38mm for 250kg Prod ID: 42764

ID 42764: standard Wheel with ball bearing and solid polyamide wheel with hardness 70 ± 5 Shore D | Axle hole: 12 mm | Hub length: 44 mm | Glide through the hall, good chemical resistance, high load capacity and shock impact resistant, for high temperature

Product information

- Article code 2-682-25K
- SKU 42764
- EAN 3838461427640

Specifications



Product description

standard Wheel with ball bearing and solid polyamide wheel with hardness 70±5 Shore D

Wheel diameter x width: 125 x 38 mm

Axle hole: 12 mm

Hub length: 44 mm

Approved and tested load capacity

Dynamic 250 kg

Static 310 kg

Temperature range:

Continuous operation: -25 | +80°C

Short (10 min) exposure: -30 | +110°C

Advantages of this Glide through the hall wheel:

- ✓ chemical resistance
- ✓ load capacity and shock impact resistant
- ✓ high temperature shifts

LIV SYSTEMS standard wheel + solid polyamide wheel Ø125 x W38mm for 250kg Prod ID: 42744

ID 42744: standard Wheel with ball bearing and solid polyamide wheel with hardness 70±5 Shore D | Axle hole: 12 mm | Hub length: 44 mm | Glide through the hall, good chemical resistance, high load capacity and shock impact resistant, for high temperature

Product information

- Article code 2-682-25K
- SKU 42744
- EAN 3838461427442

Specifications



Product description

standard Wheel with ball bearing and solid polyamide wheel with hardness 70 ± 5 Shore D

Wheel diameter x width: 125 x 38 mm

Axle hole: 8,5 mm

Hub length: 44 mm

Approved and tested load capacity

Dynamic 250 kg

Static 310 kg

Temperature range:

Continuous operation: -25 | $+80^{\circ}\text{C}$

Short (10 min) exposure: -30 | $+110^{\circ}\text{C}$

Advantages of this Glide through the hall wheel:

- ✓ chemical resistance
- ✓ load capacity and shock impact resistant
- ✓ high temperature shifts

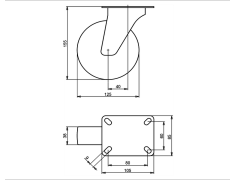
LIV SYSTEMS standard wheel + solid polyamide wheel $\varnothing 125$ x W38mm for 250kg Prod ID: 42774

ID 42774: standard Wheel with ball bearing and solid polyamide wheel with hardness 70 ± 5 Shore D | Axle hole: 8,5 mm | Hub length: 44 mm | Glide through the hall, good chemical resistance, high load capacity and shock impact resistant, for high temperature

Product information

- Article code 2-681-25K
- SKU 42774
- EAN 3838461427749

Specifications



Product description

standard Swivel castor with an overall height of 155 mm

Wheel diameter x width: 125 x 38 mm

Top plate with 4 mounting holes of 9 mm, mounting hole distance 80x60 mm and top plate outer dimensions: 105x85 mm

Wheel with plain bearing and solid polyamide wheel with hardness 70±5 Shore D.

Approved and tested load capacity

Dynamic 250 kg

Static 310 kg

Temperature range:

Continuous operation: -25 | +80°C

Short (10 min) exposure: -30 | +110°C

Advantages of this Glide through the hall Swivel castor:

- ✓ chemical resistance
- ✓ load capacity and shock impact resistant
- ✓ high temperature shifts

LIV SYSTEMS standard Swivel castor + solid polyamide wheel Ø125 x W38mm for 250kg Prod ID: 66844

ID 66844: Castor overall height 155 mm | 4 mounting holes with distance 80x60 mm | Wheel with plain bearing and solid polyamide wheel with hardness 70±5 Shore D | Glide through the hall, good chemical resistance, high load capacity and shock impact resis

Product information

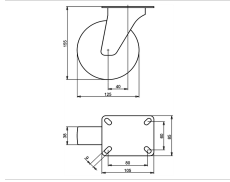
- Article code 2-672 ISO
- SKU 66844
- EAN 3838461668449

Specifications

The result of our quality is maximum performance!

[Close](#)

[Close](#)



Product description

standard Swivel castor with an overall height of 155 mm

Wheel diameter x width: 125 x 38 mm

Top plate with 4 mounting holes of 9 mm, mounting hole distance 80x60 mm and top plate outer dimensions: 105x85 mm

Wheel with roller bearing and solid polyamide wheel with hardness 70±5 Shore D.

Approved and tested load capacity

Dynamic 250 kg

Static 310 kg

Temperature range:

Continuous operation: -25 | +80°C

Short (10 min) exposure: -30 | +110°C

Advantages of this Glide through the hall Swivel castor:

- ✓ chemical resistance
- ✓ load capacity and shock impact resistant
- ✓ high temperature shifts

LIV SYSTEMS standard Swivel castor + solid polyamide wheel Ø125 x W38mm for 250kg Prod ID: 66730

ID 66730: Castor overall height 155 mm | 4 mounting holes with distance 80x60 mm | Wheel with roller bearing and solid polyamide wheel with hardness 70±5 Shore D | Glide through the hall, good chemical resistance, high load capacity and shock impact resi

Product information

- Article code 2-662 ISO
- SKU 66730
- EAN 3838461667305

Specifications

The result of our quality is maximum performance!

[Close](#)

[Close](#)



Product description

standard Swivel castor with an overall height of 155 mm

Wheel diameter x width: 125 x 38 mm

Top plate with 4 mounting holes of 9 mm, mounting hole distance 80x60 mm and top plate outer dimensions: 105x85 mm

Wheel with ball bearing and solid polyamide wheel with hardness 70±5 Shore D.

Approved and tested load capacity

Dynamic 250 kg

Static 310 kg

Temperature range:

Continuous operation: -25 | +80°C

Short (10 min) exposure: -30 | +110°C

Advantages of this Glide through the hall Swivel castor:

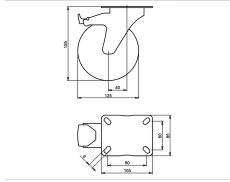
- ✓ chemical resistance
- ✓ load capacity and shock impact resistant
- ✓ high temperature shifts

LIV SYSTEMS standard Swivel castor + solid polyamide wheel Ø125 x W38mm for 250kg Prod ID: 42824

ID 42824: Castor overall height 155 mm | 4 mounting holes with distance 80x60 mm | Wheel with ball bearing and solid polyamide wheel with hardness 70±5 Shore D | Glide through the hall, good chemical resistance, high load capacity and shock impact resist

Product information

- Article code 2-662-25K
- SKU 42824
- EAN 3838461428241



Product description

standard Swivel castor with brake with an overall height of 155 mm
 Wheel diameter x width: 125 x 38 mm
 Top plate with 4 mounting holes of 9 mm, mounting hole distance 80x60 mm and top plate outer dimensions: 105x85 mm
 Wheel with plain bearing and solid polyamide wheel with hardness 70±5 Shore D
 the double brake system, brakes the turning of the wheel and the swivel rotation.

Approved and tested load capacity

Dynamic 250 kg
 Static 310 kg

Temperature range:

Continuous operation: -25 | +80°C
 Short (10 min) exposure: -30 | +110°C

Advantages of this Glide through the hall Swivel castor with brake:

- ✓ chemical resistance
- ✓ load capacity and shock impact resistant
- ✓ high temperature shifts

LIV SYSTEMS standard Swivel castor with brake + solid polyamide wheel Ø125 x W38mm for 250kg Prod ID: 30464

ID 30464: Castor overall height 155 mm | 4 mounting holes with distance 80x60 mm | Wheel with plain bearing and solid polyamide wheel with hardness 70±5 Shore D | The double brake system, brakes the turning of the wheel and the swivel rotation. | Glide t

Product information

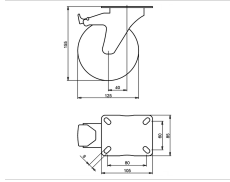
- Article code 2-684 A
- SKU 30464
- EAN 3838461304644

Specifications

The result of our quality is maximum performance!

[Close](#)

[Close](#)



Product description

standard Swivel castor with brake with an overall height of 155 mm

Wheel diameter x width: 125 x 38 mm

Top plate with 4 mounting holes of 9 mm, mounting hole distance 80x60 mm and top plate outer dimensions: 105x85 mm

Wheel with roller bearing and solid polyamide wheel with hardness 70±5 Shore D

the double brake system, brakes the turning of the wheel and the swivel rotation.

Approved and tested load capacity

Dynamic 250 kg

Static 310 kg

Temperature range:

Continuous operation: -25 | +80°C

Short (10 min) exposure: -30 | +110°C

Advantages of this Glide through the hall Swivel castor with brake:

- ✓ chemical resistance
- ✓ load capacity and shock impact resistant
- ✓ high temperature shifts

LIV SYSTEMS standard Swivel castor with brake + solid polyamide wheel Ø125 x W38mm for 250kg Prod ID: 30463

ID 30463: Castor overall height 155 mm | 4 mounting holes with distance 80x60 mm | Wheel with roller bearing and solid polyamide wheel with hardness 70±5 Shore D | The double brake system, brakes the turning of the wheel and the swivel rotation. | Glide

Product information

- Article code 2-723 A
- SKU 30463
- EAN 3838461304637

Specifications

The result of our quality is maximum performance!

[Close](#)

[Close](#)



Product description

standard Swivel castor with brake with an overall height of 155 mm

Wheel diameter x width: 125 x 35 mm

Top plate with 4 mounting holes of 9 mm, mounting hole distance 80x60 mm and top plate outer dimensions: 105x85 mm

Wheel with ball bearing and solid polypropylene wheel with hardness 70±5 Shore D
the double brake system, brakes the turning of the wheel and the swivel rotation.

Approved and tested load capacity

Dynamic 150 kg

Static 180 kg

Temperature range:

Continuous operation: -25 | +80°C

Short (10 min) exposure: -30 | +110°C

Advantages of this Glide through the hall Swivel castor with brake:

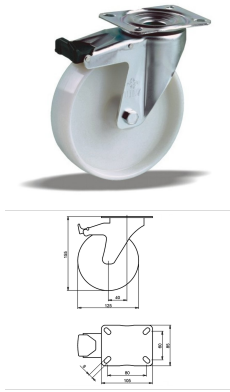
- ✓ chemical resistance
- ✓ load capacity and shock impact resistant
- ✓ high temperature shifts

LIV SYSTEMS standard Swivel castor with brake + solid polypropylene wheel Ø125 x W35mm for 150kg Prod ID: 42835

ID 42835: Castor overall height 155 mm | 4 mounting holes with distance 80x60 mm | Wheel with ball bearing and solid polypropylene wheel with hardness 70±5 Shore D | The double brake system, brakes the turning of the wheel and the swivel rotation. | Glid

Product information

- 
- Article code 2-723-25K
 - SKU 42835
 - EAN 3838461428357



Product description

standard Swivel castor with brake with an overall height of 155 mm
 Wheel diameter x width: 125 x 38 mm
 Top plate with 4 mounting holes of 9 mm, mounting hole distance 80x60 mm and top plate outer dimensions: 105x85 mm
 Wheel with plain bearing and solid polyamide wheel with hardness 70±5 Shore D
 the double brake system, brakes the turning of the wheel and the swivel rotation.

Approved and tested load capacity

Dynamic 250 kg
 Static 310 kg

Temperature range:

Continuous operation: -25 | +80°C
 Short (10 min) exposure: -30 | +110°C

Advantages of this Glide through the hall Swivel castor with brake:

- ✓ chemical resistance
- ✓ load capacity and shock impact resistant
- ✓ high temperature shifts

LIV SYSTEMS standard Swivel castor with brake + solid polyamide wheel Ø125 x W38mm for 250kg Prod ID: 30503

ID 30503: Castor overall height 155 mm | 4 mounting holes with distance 80x60 mm | Wheel with plain bearing and solid polyamide wheel with hardness 70±5 Shore D | The double brake system, brakes the turning of the wheel and the swivel rotation. | Glide t

Product information

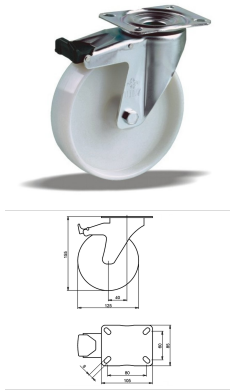
- Article code 2-684 A
- SKU 30503
- EAN 3838461305030

Specifications

The result of our quality is maximum performance!

[Close](#)

[Close](#)



Product description

standard Swivel castor with brake with an overall height of 155 mm
 Wheel diameter x width: 125 x 38 mm
 Top plate with 4 mounting holes of 9 mm, mounting hole distance 80x60 mm and top plate outer dimensions: 105x85 mm
 Wheel with roller bearing and solid polyamide wheel with hardness 70±5 Shore D
 the double brake system, brakes the turning of the wheel and the swivel rotation.

Approved and tested load capacity

Dynamic 250 kg
 Static 310 kg

Temperature range:

Continuous operation: -25 | +80°C
 Short (10 min) exposure: -30 | +110°C

Advantages of this Glide through the hall Swivel castor with brake:

- ✓ chemical resistance
- ✓ load capacity and shock impact resistant
- ✓ high temperature shifts

LIV SYSTEMS standard Swivel castor with brake + solid polyamide wheel Ø125 x W38mm for 250kg Prod ID: 30495

ID 30495: Castor overall height 155 mm | 4 mounting holes with distance 80x60 mm | Wheel with roller bearing and solid polyamide wheel with hardness 70±5 Shore D | The double brake system, brakes the turning of the wheel and the swivel rotation. | Glide

Product information

- Article code 2-723 A
- SKU 30495
- EAN 3838461304958

Specifications

The result of our quality is maximum performance!

[Close](#)

[Close](#)



Product description

standard Swivel castor with brake with an overall height of 155 mm

Wheel diameter x width: 125 x 35 mm

Top plate with 4 mounting holes of 9 mm, mounting hole distance 80x60 mm and top plate outer dimensions: 105x85 mm

Wheel with ball bearing and solid polyamide wheel with hardness 70±5 Shore D
the double brake system, brakes the turning of the wheel and the swivel rotation.

Approved and tested load capacity

Dynamic 250 kg

Static 310 kg

Temperature range:

Continuous operation: -25 | +80°C

Short (10 min) exposure: -30 | +110°C

Advantages of this Glide through the hall Swivel castor with brake:


- ✓ chemical resistance
- ✓ load capacity and shock impact resistant
- ✓ high temperature shifts

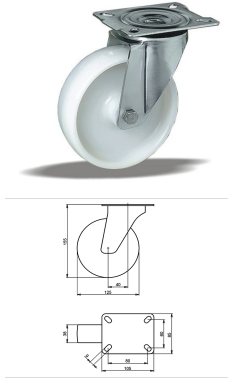
LIV SYSTEMS standard Swivel castor with brake + solid polyamide wheel

Ø125 x W35mm for 250kg Prod ID: 42834

ID 42834: Castor overall height 155 mm | 4 mounting holes with distance 80x60 mm | Wheel with ball bearing and solid polyamide wheel with hardness 70±5 Shore D | The double brake system, brakes the turning of the wheel and the swivel rotation. | Glide th

Product information

- 
- Article code 2-723-25K
 - SKU 42834
 - EAN 3838461428340



Product description

standard Swivel castor with an overall height of 155 mm

Wheel diameter x width: 125 x 38 mm

Top plate with 4 mounting holes of 9 mm, mounting hole distance 80x60 mm and top plate outer dimensions: 105x85 mm

Wheel with plain bearing and solid polyamide wheel with hardness 70±5 Shore D.

Approved and tested load capacity

Dynamic 250 kg

Static 310 kg

Temperature range:

Continuous operation: -25 | +80°C

Short (10 min) exposure: -30 | +110°C

Advantages of this Glide through the hall Swivel castor:

- ✓ chemical resistance
- ✓ load capacity and shock impact resistant
- ✓ high temperature shifts

LIV SYSTEMS standard Swivel castor + solid polyamide wheel Ø125 x W38mm for 250kg Prod ID: 66849

ID 66849: Castor overall height 155 mm | 4 mounting holes with distance 80x60 mm | Wheel with plain bearing and solid polyamide wheel with hardness 70±5 Shore D | Glide through the hall, good chemical resistance, high load capacity and shock impact resis

Product information

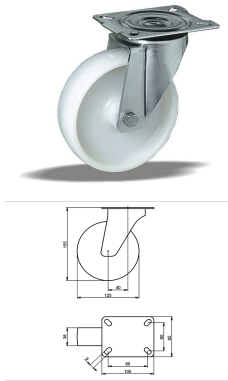
- Article code 2-672 ISO
- SKU 66849
- EAN 3838461668494

Specifications

The result of our quality is maximum performance!

[Close](#)

[Close](#)



Product description

standard Swivel castor with an overall height of 155 mm

Wheel diameter x width: 125 x 38 mm

Top plate with 4 mounting holes of 9 mm, mounting hole distance 80x60 mm and top plate outer dimensions: 105x85 mm

Wheel with roller bearing and solid polyamide wheel with hardness 70±5 Shore D.

Approved and tested load capacity

Dynamic 250 kg

Static 310 kg

Temperature range:

Continuous operation: -25 | +80°C

Short (10 min) exposure: -30 | +110°C

Advantages of this Glide through the hall Swivel castor:

- ✓ chemical resistance
- ✓ load capacity and shock impact resistant
- ✓ high temperature shifts

LIV SYSTEMS standard Swivel castor + solid polyamide wheel Ø125 x W38mm for 250kg Prod ID: 67161

ID 67161: Castor overall height 155 mm | 4 mounting holes with distance 80x60 mm | Wheel with roller bearing and solid polyamide wheel with hardness 70±5 Shore D |

Glide through the hall, good chemical resistance, high load capacity and shock impact resi

Product information

- Article code 2-662 ISO
- SKU 67161
- EAN 3838461671616

Specifications

The result of our quality is maximum performance!

[Close](#)

[Close](#)



Product description

standard Swivel castor with an overall height of 155 mm

Wheel diameter x width: 125 x 38 mm

Top plate with 4 mounting holes of 9 mm, mounting hole distance 80x60 mm and top plate outer dimensions: 105x85 mm

Wheel with ball bearing and solid polyamide wheel with hardness 70±5 Shore D.

Approved and tested load capacity

Dynamic 250 kg

Static 310 kg

Temperature range:

Continuous operation: -25 | +80°C

Short (10 min) exposure: -30 | +110°C

Advantages of this Glide through the hall Swivel castor:

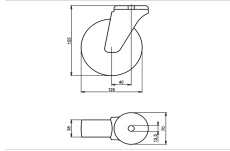
- ✓ chemical resistance
- ✓ load capacity and shock impact resistant
- ✓ high temperature shifts

LIV SYSTEMS standard Swivel castor + solid polyamide wheel Ø125 x W38mm for 250kg Prod ID: 42823

ID 42823: Castor overall height 155 mm | 4 mounting holes with distance 80x60 mm | Wheel with ball bearing and solid polyamide wheel with hardness 70±5 Shore D | Glide through the hall, good chemical resistance, high load capacity and shock impact resist

Product information

- Article code 2-662-25K
- SKU 42823
- EAN 3838461428234



Product description

standard Swivel castor with an overall height of 155 mm

Wheel diameter x width: 125 x 38 mm

Top plate with 4 mounting holes of 12,5 mm, mounting hole distance #\$\$ mm and top plate outer dimensions: 70 mm

Wheel with plain bearing and solid polyamide wheel with hardness 70±5 Shore D.

Approved and tested load capacity

Dynamic 250 kg

Static 310 kg

Temperature range:

Continuous operation: -25 | +80°C

Short (10 min) exposure: -30 | +110°C

Advantages of this Glide through the hall Swivel castor:

- ✓ chemical resistance
- ✓ load capacity and shock impact resistant
- ✓ high temperature shifts

LIV SYSTEMS standard Swivel castor + solid polyamide wheel Ø125 x W38mm for 250kg Prod ID: 34414

ID 34414: Castor overall height 155 mm | 4 mounting holes with distance #\$\$ mm | Wheel with plain bearing and solid polyamide wheel with hardness 70±5 Shore D | Glide through the hall, good chemical resistance, high load capacity and shock impact resista

Product information

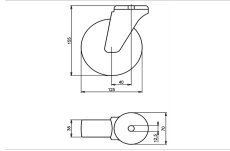
- Article code 2-767 L12
- SKU 34414
- EAN 3838461344145

Specifications

The result of our quality is maximum performance!

[Close](#)

[Close](#)



Product description

standard Swivel castor with an overall height of 155 mm

Wheel diameter x width: 125 x 38 mm

Top plate with 4 mounting holes of 12,5 mm, mounting hole distance #\$\$ mm and top plate outer dimensions: 70 mm

Wheel with roller bearing and solid polyamide wheel with hardness 70±5 Shore D.

Approved and tested load capacity

Dynamic 250 kg

Static 310 kg

Temperature range:

Continious operation: -25 | +80°C

Short (10 min) exposure: -30 | +110°C

Advantages of this Glide through the hall Swivel castor:

- ✓ chemical resistance
- ✓ load capacity and shock impact resistant
- ✓ high temperature shifts

LIV SYSTEMS standard Swivel castor + solid polyamide wheel Ø125 x W38mm for 250kg Prod ID: 34393

ID 34393: Castor overall height 155 mm | 4 mounting holes with distance #\$\$ mm | Wheel with roller bearing and solid polyamide wheel with hardness 70±5 Shore D | Glide through the hall, good chemical resistance, high load capacity and shock impact resist

Product information

- Article code 2-757 L12
- SKU 34393
- EAN 3838461343933

Specifications

The result of our quality is maximum performance!

[Close](#)

[Close](#)



Product description

standard Swivel castor with an overall height of 155 mm

Wheel diameter x width: 125 x 38 mm

Top plate with 4 mounting holes of 12,5 mm, mounting hole distance #\$\$ mm and top plate outer dimensions: 70 mm

Wheel with ball bearing and solid polyamide wheel with hardness 70±5 Shore D.

Approved and tested load capacity

Dynamic 250 kg

Static 310 kg

Temperature range:

Continuous operation: -25 | +80°C

Short (10 min) exposure: -30 | +110°C

Advantages of this Glide through the hall Swivel castor:

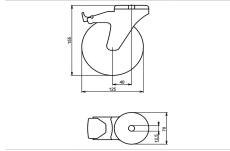
- ✓ chemical resistance
- ✓ load capacity and shock impact resistant
- ✓ high temperature shifts

LIV SYSTEMS standard Swivel castor + solid polyamide wheel Ø125 x W38mm for 250kg Prod ID: 42904

ID 42904: Castor overall height 155 mm | 4 mounting holes with distance #\$\$ mm | Wheel with ball bearing and solid polyamide wheel with hardness 70±5 Shore D | Glide through the hall, good chemical resistance, high load capacity and shock impact resistant

Product information

- Article code 2-757-25K
- SKU 42904
- EAN 3838461429040



Product description

standard Swivel castor with brake with an overall height of 155 mm
 Wheel diameter x width: 125 x 38 mm
 Top plate with 4 mounting holes of 12,5 mm, mounting hole distance #\$\$ mm and top plate outer dimensions: 70 mm
 Wheel with plain bearing and solid polyamide wheel with hardness 70±5 Shore D
 the double brake system, brakes the turning of the wheel and the swivel rotation.

Approved and tested load capacity

Dynamic 250 kg
 Static 310 kg

Temperature range:

Continuous operation: -25 | +80°C
 Short (10 min) exposure: -30 | +110°C

Advantages of this Glide through the hall Swivel castor with brake:

- ✓ chemical resistance
- ✓ load capacity and shock impact resistant
- ✓ high temperature shifts

LIV SYSTEMS standard Swivel castor with brake + solid polyamide wheel Ø125 x W38mm for 250kg Prod ID: 34645

ID 34645: Castor overall height 155 mm | 4 mounting holes with distance #\$\$ mm | Wheel with plain bearing and solid polyamide wheel with hardness 70±5 Shore D | The double brake system, brakes the turning of the wheel and the swivel rotation. | Glide thr

Product information

- Article code 2-795 L12
- SKU 34645
- EAN 3838461346453

Specifications

The result of our quality is maximum performance!

[Close](#)

[Close](#)



Product description

standard Swivel castor with brake with an overall height of 155 mm

Wheel diameter x width: 125 x 38 mm

Top plate with 4 mounting holes of 12,5 mm, mounting hole distance #\$\$% mm and top plate outer dimensions: 70 mm

Wheel with ball bearing and solid polyamide wheel with hardness 70±5 Shore D
the double brake system, brakes the turning of the wheel and the swivel rotation.

Approved and tested load capacity

Dynamic 250 kg

Static 310 kg

Temperature range:

Continuous operation: -25 | +80°C

Short (10 min) exposure: -30 | +110°C

Advantages of this Glide through the hall Swivel castor with brake:

- ✓ chemical resistance
- ✓ load capacity and shock impact resistant
- ✓ high temperature shifts

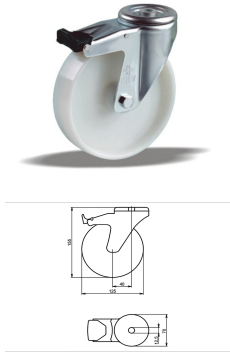
LIV SYSTEMS standard Swivel castor with brake + solid polyamide wheel

Ø125 x W38mm for 250kg Prod ID: 42915

ID 42915: Castor overall height 155 mm | 4 mounting holes with distance #\$\$% mm | Wheel with ball bearing and solid polyamide wheel with hardness 70±5 Shore D | The double brake system, brakes the turning of the wheel and the swivel rotation. | Glide thro

Product information

- 
- Article code 2-790-25K
 - SKU 42915
 - EAN 3838461429156



Product description

standard Swivel castor with brake with an overall height of 155 mm
Wheel diameter x width: 125 x 38 mm
Top plate with 4 mounting holes of 12,5 mm, mounting hole distance #\$\$ mm and top plate outer dimensions: 70 mm
Wheel with plain bearing and solid polyamide wheel with hardness 70±5 Shore D
the double brake system, brakes the turning of the wheel and the swivel rotation.

Approved and tested load capacity

Dynamic 250 kg
Static 310 kg

Temperature range:

Continuous operation: -25 | +80°C
Short (10 min) exposure: -30 | +110°C

Advantages of this Glide through the hall Swivel castor with brake:

- ✓ chemical resistance
- ✓ load capacity and shock impact resistant
- ✓ high temperature shifts

LIV SYSTEMS standard Swivel castor with brake + solid polyamide wheel Ø125 x W38mm for 250kg Prod ID: 34733

ID 34733: Castor overall height 155 mm | 4 mounting holes with distance #\$\$ mm | Wheel with plain bearing and solid polyamide wheel with hardness 70±5 Shore D | The double brake system, brakes the turning of the wheel and the swivel rotation. | Glide thr

Product information

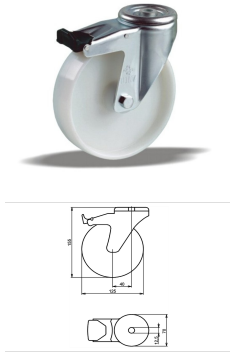
- Article code 2-795 L12
- SKU 34733
- EAN 3838461347337

Specifications

The result of our quality is maximum performance!

[Close](#)

[Close](#)



Product description

standard Swivel castor with brake with an overall height of 155 mm
 Wheel diameter x width: 125 x 38 mm
 Top plate with 4 mounting holes of 12,5 mm, mounting hole distance #\$\$ mm and top plate outer dimensions: 70 mm
 Wheel with roller bearing and solid polyamide wheel with hardness 70±5 Shore D
 the double brake system, brakes the turning of the wheel and the swivel rotation.

Approved and tested load capacity

Dynamic 250 kg
 Static 310 kg

Temperature range:

Continuous operation: -25 | +80°C
 Short (10 min) exposure: -30 | +110°C

Advantages of this Glide through the hall Swivel castor with brake:

- ✓ chemical resistance
- ✓ load capacity and shock impact resistant
- ✓ high temperature shifts

LIV SYSTEMS standard Swivel castor with brake + solid polyamide wheel Ø125 x W38mm for 250kg Prod ID: 34725

ID 34725: Castor overall height 155 mm | 4 mounting holes with distance #\$\$ mm | Wheel with roller bearing and solid polyamide wheel with hardness 70±5 Shore D | The double brake system, brakes the turning of the wheel and the swivel rotation. | Glide th

Product information

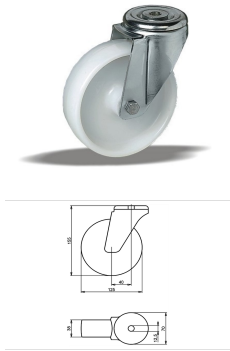
- Article code 2-790 L12
- SKU 34725
- EAN 3838461347252

Specifications

The result of our quality is maximum performance!

[Close](#)

[Close](#)



Product description

standard Swivel castor with an overall height of 155 mm

Wheel diameter x width: 125 x 38 mm

Top plate with 4 mounting holes of 12,5 mm, mounting hole distance #\$\$ mm and top plate outer dimensions: 70 mm

Wheel with plain bearing and solid polyamide wheel with hardness 70±5 Shore D.

Approved and tested load capacity

Dynamic 250 kg

Static 310 kg

Temperature range:

Continuous operation: -25 | +80°C

Short (10 min) exposure: -30 | +110°C

Advantages of this Glide through the hall Swivel castor:

- ✓ chemical resistance
- ✓ load capacity and shock impact resistant
- ✓ high temperature shifts

LIV SYSTEMS standard Swivel castor + solid polyamide wheel Ø125 x W38mm for 250kg Prod ID: 34474

ID 34474: Castor overall height 155 mm | 4 mounting holes with distance #\$\$ mm | Wheel with plain bearing and solid polyamide wheel with hardness 70±5 Shore D | Glide through the hall, good chemical resistance, high load capacity and shock impact resista

Product information

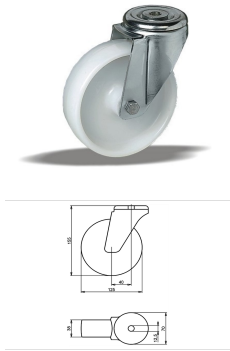
- Article code 2-767 L12
- SKU 34474
- EAN 3838461344749

Specifications

The result of our quality is maximum performance!

[Close](#)

[Close](#)



Product description

standard Swivel castor with an overall height of 155 mm

Wheel diameter x width: 125 x 38 mm

Top plate with 4 mounting holes of 12,5 mm, mounting hole distance #\$\$ mm and top plate outer dimensions: 70 mm

Wheel with roller bearing and solid polyamide wheel with hardness 70±5 Shore D.

Approved and tested load capacity

Dynamic 250 kg

Static 310 kg

Temperature range:

Continuous operation: -25 | +80°C

Short (10 min) exposure: -30 | +110°C

Advantages of this Glide through the hall Swivel castor:

- ✓ chemical resistance
- ✓ load capacity and shock impact resistant
- ✓ high temperature shifts

LIV SYSTEMS standard Swivel castor + solid polyamide wheel Ø125 x W38mm for 250kg Prod ID: 34473

ID 34473: Castor overall height 155 mm | 4 mounting holes with distance #\$\$ mm | Wheel with roller bearing and solid polyamide wheel with hardness 70±5 Shore D | Glide through the hall, good chemical resistance, high load capacity and shock impact resist

Product information

- Article code 2-757 L12
- SKU 34473
- EAN 3838461344732

Specifications

The result of our quality is maximum performance!

[Close](#)

[Close](#)



Product description

standard Swivel castor with an overall height of 155 mm

Wheel diameter x width: 125 x 38 mm

Top plate with 4 mounting holes of 12,5 mm, mounting hole distance #\$\$ mm and top plate outer dimensions: 70 mm

Wheel with ball bearing and solid polyamide wheel with hardness 70±5 Shore D.

Approved and tested load capacity

Dynamic 250 kg

Static 310 kg

Temperature range:

Continuous operation: -25 | +80°C

Short (10 min) exposure: -30 | +110°C

Advantages of this Glide through the hall Swivel castor:

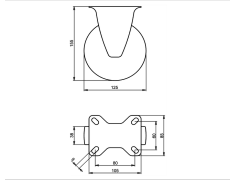
- ✓ chemical resistance
- ✓ load capacity and shock impact resistant
- ✓ high temperature shifts

LIV SYSTEMS standard Swivel castor + solid polyamide wheel Ø125 x W38mm for 250kg Prod ID: 42903

ID 42903: Castor overall height 155 mm | 4 mounting holes with distance #\$\$ mm | Wheel with ball bearing and solid polyamide wheel with hardness 70±5 Shore D | Glide through the hall, good chemical resistance, high load capacity and shock impact resistant

Product information

- Article code 2-757-25K
- SKU 42903
- EAN 3838461429033



Product description

standard Fixed castor with an overall height of 155 mm

Wheel diameter x width: 125 x 38 mm

Top plate with 4 mounting holes of 9 mm, mounting hole distance 80x60 mm and top plate outer dimensions: 105x85 mm

Wheel with plain bearing and solid polyamide wheel with hardness 70±5 Shore D.

Approved and tested load capacity

Dynamic 250 kg

Static 310 kg

Temperature range:

Continuous operation: -25 | +80°C

Short (10 min) exposure: -30 | +110°C

Advantages of this Glide through the hall Fixed castor:

- ✓ chemical resistance
- ✓ load capacity and shock impact resistant
- ✓ high temperature shifts

LIV SYSTEMS standard Fixed castor + solid polyamide wheel Ø125 x W38mm for 250kg Prod ID: 67011

ID 67011: Castor overall height 155 mm | 4 mounting holes with distance 80x60 mm | Wheel with plain bearing and solid polyamide wheel with hardness 70±5 Shore D | Glide through the hall, good chemical resistance, high load capacity and shock impact resis

Product information

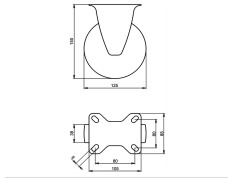
- Article code 2-677 ISO
- SKU 67011
- EAN 3838461670114

Specifications

The result of our quality is maximum performance!

[Close](#)

[Close](#)



Product description

standard Fixed castor with an overall height of 155 mm

Wheel diameter x width: 125 x 38 mm

Top plate with 4 mounting holes of 9 mm, mounting hole distance 80x60 mm and top plate outer dimensions: 105x85 mm

Wheel with roller bearing and solid polyamide wheel with hardness 70±5 Shore D.

Approved and tested load capacity

Dynamic 250 kg

Static 310 kg

Temperature range:

Continuous operation: -25 | +80°C

Short (10 min) exposure: -30 | +110°C

Advantages of this Glide through the hall Fixed castor:

- ✓ chemical resistance
- ✓ load capacity and shock impact resistant
- ✓ high temperature shifts

LIV SYSTEMS standard Fixed castor + solid polyamide wheel Ø125 x W38mm for 250kg Prod ID: 66995

ID 66995: Castor overall height 155 mm | 4 mounting holes with distance 80x60 mm | Wheel with roller bearing and solid polyamide wheel with hardness 70±5 Shore D | Glide through the hall, good chemical resistance, high load capacity and shock impact resi

Product information

- Article code 2-667 ISO
- SKU 66995
- EAN 3838461669958

Specifications

The result of our quality is maximum performance!

[Close](#)

[Close](#)



Product description

standard Fixed castor with an overall height of 155 mm

Wheel diameter x width: 125 x 38 mm

Top plate with 4 mounting holes of 9 mm, mounting hole distance 80x60 mm and top plate outer dimensions: 105x85 mm

Wheel with ball bearing and solid polyamide wheel with hardness 70±5 Shore D.

Approved and tested load capacity

Dynamic 250 kg

Static 310 kg

Temperature range:

Continuous operation: -25 | +80°C

Short (10 min) exposure: -30 | +110°C

Advantages of this Glide through the hall Fixed castor:

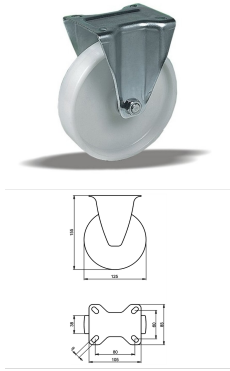
- ✓ chemical resistance
- ✓ load capacity and shock impact resistant
- ✓ high temperature shifts

LIV SYSTEMS standard Fixed castor + solid polyamide wheel Ø125 x W38mm for 250kg Prod ID: 42864

ID 42864: Castor overall height 155 mm | 4 mounting holes with distance 80x60 mm | Wheel with ball bearing and solid polyamide wheel with hardness 70±5 Shore D | Glide through the hall, good chemical resistance, high load capacity and shock impact resist

Product information

- Article code 2-667-25K
- SKU 42864
- EAN 3838461428647



Product description

standard Fixed castor with an overall height of 155 mm

Wheel diameter x width: 125 x 38 mm

Top plate with 4 mounting holes of 9 mm, mounting hole distance 80x60 mm and top plate outer dimensions: 105x85 mm

Wheel with plain bearing and solid polyamide wheel with hardness 70±5 Shore D.

Approved and tested load capacity

Dynamic 250 kg

Static 310 kg

Temperature range:

Continuous operation: -25 | +80°C

Short (10 min) exposure: -30 | +110°C

Advantages of this Glide through the hall Fixed castor:

- ✓ chemical resistance
- ✓ load capacity and shock impact resistant
- ✓ high temperature shifts

LIV SYSTEMS standard Fixed castor + solid polyamide wheel Ø125 x W38mm for 250kg Prod ID: 67016

ID 67016: Castor overall height 155 mm | 4 mounting holes with distance 80x60 mm | Wheel with plain bearing and solid polyamide wheel with hardness 70±5 Shore D | Glide through the hall, good chemical resistance, high load capacity and shock impact resis

Product information

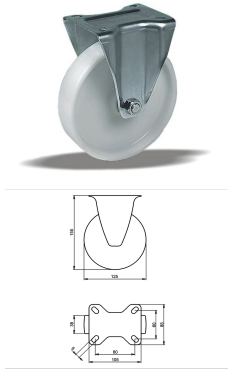
- Article code 2-677 ISO
- SKU 67016
- EAN 3838461670169

Specifications

The result of our quality is maximum performance!

[Close](#)

[Close](#)



Product description

standard Fixed castor with an overall height of 155 mm

Wheel diameter x width: 125 x 38 mm

Top plate with 4 mounting holes of 9 mm, mounting hole distance 80x60 mm and top plate outer dimensions: 105x85 mm

Wheel with roller bearing and solid polyamide wheel with hardness 70±5 Shore D.

Approved and tested load capacity

Dynamic 250 kg

Static 310 kg

Temperature range:

Continuous operation: -25 | +80°C

Short (10 min) exposure: -30 | +110°C

Advantages of this Glide through the hall Fixed castor:

- ✓ chemical resistance
- ✓ load capacity and shock impact resistant
- ✓ high temperature shifts

LIV SYSTEMS standard Fixed castor + solid polyamide wheel Ø125 x W38mm for 250kg Prod ID: 67001

ID 67001: Castor overall height 155 mm | 4 mounting holes with distance 80x60 mm | Wheel with roller bearing and solid polyamide wheel with hardness 70±5 Shore D | Glide through the hall, good chemical resistance, high load capacity and shock impact resi

Product information

- Article code 2-667 ISO
- SKU 67001
- EAN 3838461670015

Specifications

The result of our quality is maximum performance!

[Close](#)

[Close](#)



Product description

standard Fixed castor with an overall height of 155 mm

Wheel diameter x width: 125 x 38 mm

Top plate with 4 mounting holes of 9 mm, mounting hole distance 80x60 mm and top plate outer dimensions: 105x85 mm

Wheel with ball bearing and solid polyamide wheel with hardness 70±5 Shore D.

Approved and tested load capacity

Dynamic 250 kg

Static 310 kg

Temperature range:

Continuous operation: -25 | +80°C

Short (10 min) exposure: -30 | +110°C

Advantages of this Glide through the hall Fixed castor:

- ✓ chemical resistance
- ✓ load capacity and shock impact resistant
- ✓ high temperature shifts

LIV SYSTEMS standard Fixed castor + solid polyamide wheel Ø125 x W38mm for 250kg Prod ID: 42863

ID 42863: Castor overall height 155 mm | 4 mounting holes with distance 80x60 mm | Wheel with ball bearing and solid polyamide wheel with hardness 70±5 Shore D | Glide through the hall, good chemical resistance, high load capacity and shock impact resist

Product information

- Article code 2-667-25K
- SKU 42863
- EAN 3838461428630

Алматы (7273)495-231
Ангарск (3955)60-70-56
Архангельск (8182)63-90-72
Астрахань (8512)99-46-04
Барнаул (3852)73-04-60
Белгород (4722)40-23-64
Благовещенск (4162)22-76-07
Брянск (4832)59-03-52
Владивосток (423)249-28-31
Владикавказ (8672)28-90-48
Владимир (4922)49-43-18
Волгоград (844)278-03-48
Вологда (8172)26-41-59
Воронеж (473)204-51-73
Екатеринбург (343)384-55-89

Иваново (4932)77-34-06
Ижевск (3412)26-03-58
Иркутск (395)279-98-46
Казань (843)206-01-48
Калининград (4012)72-03-81
Калуга (4842)92-23-67
Кемерово (3842)65-04-62
Киров (8332)68-02-04
Коломна (4966)23-41-49
Кострома (4942)77-07-48
Краснодар (861)203-40-90
Красноярск (391)204-63-61
Курск (4712)77-13-04
Курган (3522)50-90-47
Липецк (4742)52-20-81

Магнитогорск (3519)55-03-13
Москва (495)268-04-70
Мурманск (8152)59-64-93
Набережные Челны (8552)20-53-41
Нижний Новгород (831)429-08-12
Новокузнецк (3843)20-46-81
Ноябрьск (3496)41-32-12
Новосибирск (383)227-86-73
Омск (3812)21-46-40
Орел (4862)44-53-42
Оренбург (3532)37-68-04
Пенза (8412)22-31-16
Петрозаводск (8142)55-98-37
Псков (8112)59-10-37
Пермь (342)205-81-47

Ростов-на-Дону (863)308-18-15
Рязань (4912)46-61-64
Самара (846)206-03-16
Санкт-Петербург (812)309-46-40
Саратов (845)249-38-78
Севастополь (8692)22-31-93
Саранск (8342)22-96-24
Симферополь (3652)67-13-56
Смоленск (4812)29-41-54
Сочи (862)225-72-31
Ставрополь (8652)20-65-13
Сургут (3462)77-98-35
Сыктывкар (8212)25-95-17
Тамбов (4752)50-40-97
Тверь (4822)63-31-35

Тольятти (8482)63-91-07
Томск (3822)98-41-53
Тула (4872)33-79-87
Тюмень (3452)66-21-18
Ульяновск (8422)24-23-59
Улан-Удэ (3012)59-97-51
Уфа (347)229-48-12
Хабаровск (4212)92-98-04
Чебоксары (8352)28-53-07
Челябинск (351)202-03-61
Ставрополь (8652)20-65-13
Череповец (8202)49-02-64
Чита (3022)38-34-83
Якутск (4112)23-90-97
Ярославль (4852)69-52-93

Россия +7(495)268-04-70

Казахстан +7(7172)727-132

Киргизия +996(312)96-26-47

<https://liv.nt-rt.ru/> || vis@nt-rt.ru