

Алматы (7273)495-231
Ангарск (3955)60-70-56
Архангельск (8182)63-90-72
Астрахань (8512)99-46-04
Барнаул (3852)73-04-60
Белгород (4722)40-23-64
Благовещенск (4162)22-76-07
Брянск (4832)59-03-52
Владивосток (423)249-28-31
Владикавказ (8672)28-90-48
Владимир (4922)49-43-18
Волгоград (844)278-03-48
Вологда (8172)26-41-59
Воронеж (473)204-51-73
Екатеринбург (343)384-55-89

Иваново (4932)77-34-06
Ижевск (3412)26-03-58
Иркутск (395)279-98-46
Казань (843)206-01-48
Калининград (4012)72-03-81
Калуга (4842)92-23-67
Кемерово (3842)65-04-62
Киров (8332)68-02-04
Коломна (4966)23-41-49
Кострома (4942)77-07-48
Краснодар (861)203-40-90
Красноярск (391)204-63-61
Курск (4712)77-13-04
Курган (3522)50-90-47
Липецк (4742)52-20-81

Магнитогорск (3519)55-03-13
Москва (495)268-04-70
Мурманск (8152)59-64-93
Набережные Челны (8552)20-53-41
Нижний Новгород (831)429-08-12
Новокузнецк (3843)20-46-81
Ноябрьск (3496)41-32-12
Новосибирск (383)227-86-73
Омск (3812)21-46-40
Орел (4862)44-53-42
Оренбург (3532)37-68-04
Пенза (8412)22-31-16
Петрозаводск (8142)55-98-37
Псков (8112)59-10-37
Пермь (342)205-81-47

Ростов-на-Дону (863)308-18-15
Рязань (4912)46-61-64
Самара (846)206-03-16
Санкт-Петербург (812)309-46-40
Саратов (845)249-38-78
Севастополь (8692)22-31-93
Саранск (8342)22-96-24
Симферополь (3652)67-13-56
Смоленск (4812)29-41-54
Сочи (862)225-72-31
Ставрополь (8652)20-65-13
Сургут (3462)77-98-35
Сыктывкар (8212)25-95-17
Тамбов (4752)50-40-97
Тверь (4822)63-31-35

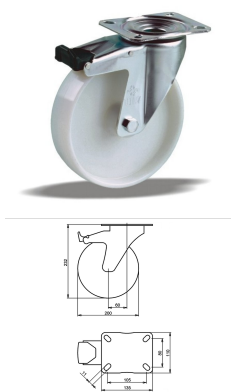
Тольятти (8482)63-91-07
Томск (3822)98-41-53
Тула (4872)33-79-87
Тюмень (3452)66-21-18
Ульяновск (8422)24-23-59
Улан-Удэ (3012)59-97-51
Уфа (347)229-48-12
Хабаровск (4212)92-98-04
Чебоксары (8352)28-53-07
Челябинск (351)202-03-61
Череповец (8202)49-02-64
Чита (3022)38-34-83
Якутск (4112)23-90-97
Ярославль (4852)69-52-93

Россия +7(495)268-04-70

Казахстан +7(7172)727-132

Киргизия +996(312)96-26-47

<https://liv.nt-rt.ru/> || vis@nt-rt.ru



Product description

standard Swivel castor with brake with an overall height of 232 mm

Wheel diameter x width: 200 x 50 mm

Top plate with 4 mounting holes of 11 mm, mounting hole distance 105x80 mm and top plate outer dimensions: 135x110 mm

Wheel with plain bearing and solid polyamide wheel with hardness 70±5 Shore D

the double brake system, brakes the turning of the wheel and the swivel rotation.

Approved and tested load capacity

Dynamic 300 kg

Static 370 kg

Temperature range:

Continuous operation: -25 | +80°C

Short (10 min) exposure: -30 | +110°C

Advantages of this Glide through the hall Swivel castor with brake:

- ✓ chemical resistance
- ✓ load capacity and shock impact resistant
- ✓ high temperature shifts

LIV SYSTEMS standard Swivel castor with brake + solid polyamide wheel Ø200 x W50mm for 300kg Prod ID: 30514

ID 30514: Castor overall height 232 mm | 4 mounting holes with distance 105x80 mm | Wheel with plain bearing and solid polyamide wheel with hardness 70±5 Shore D |

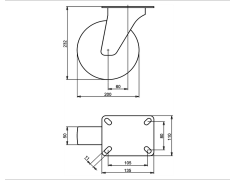
The double brake system, brakes the turning of the wheel and the swivel rotation. | Glide

Product information

- Article code 2-687 A
- SKU 30514
- EAN 3838461305146

Specifications

The result of our quality is maximum performance!



Product description

standard Swivel castor with an overall height of 232 mm

Wheel diameter x width: 200 x 50 mm

Top plate with 4 mounting holes of 11 mm, mounting hole distance 105x80 mm and top plate outer dimensions: 135x110 mm

Wheel with plain bearing and solid polyamide wheel with hardness 70±5 Shore D.

Approved and tested load capacity

Dynamic 300 kg

Static 370 kg

Temperature range:

Continuous operation: -25 | +80°C

Short (10 min) exposure: -30 | +110°C

Advantages of this Glide through the hall Swivel castor:

- ✓ chemical resistance
- ✓ load capacity and shock impact resistant
- ✓ high temperature shifts

LIV SYSTEMS standard Swivel castor + solid polyamide wheel Ø200 x W50mm for 300kg Prod ID: 66846

ID 66846: Castor overall height 232 mm | 4 mounting holes with distance 105x80 mm | Wheel with plain bearing and solid polyamide wheel with hardness 70±5 Shore D | Glide through the hall, good chemical resistance, high load capacity and shock impact resi

Product information

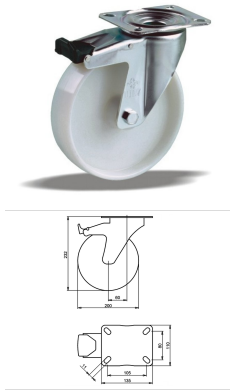
- Article code 2-674 ISO
- SKU 66846
- EAN 3838461668463

Specifications

The result of our quality is maximum performance!

[Close](#)

[Close](#)



Product description

standard Swivel castor with brake with an overall height of 232 mm

Wheel diameter x width: 200 x 50 mm

Top plate with 4 mounting holes of 11 mm, mounting hole distance 105x80 mm and top plate outer dimensions: 135x110 mm

Wheel with roller bearing and solid polyamide wheel with hardness 70±5 Shore D

the double brake system, brakes the turning of the wheel and the swivel rotation.

Approved and tested load capacity

Dynamic 300 kg

Static 370 kg

Temperature range:

Continuous operation: -25 | +80°C

Short (10 min) exposure: -30 | +110°C

Advantages of this Glide through the hall Swivel castor with brake:

- ✓ chemical resistance
- ✓ load capacity and shock impact resistant
- ✓ high temperature shifts

LIV SYSTEMS standard Swivel castor with brake + solid polyamide wheel Ø200 x W50mm for 300kg Prod ID: 30513

ID 30513: Castor overall height 232 mm | 4 mounting holes with distance 105x80 mm | Wheel with roller bearing and solid polyamide wheel with hardness 70±5 Shore D |

The double brake system, brakes the turning of the wheel and the swivel rotation. | Glide

Product information

- Article code 2-726 A
- SKU 30513
- EAN 3838461305139

Specifications

The result of our quality is maximum performance!

[Close](#)

[Close](#)



Product description

standard Wheel with roller bearing and solid polyamide wheel with hardness 70±5 Shore D

Wheel diameter x width: 200 x 50 mm

Axle hole: 20 mm

Hub length: 58 mm

Approved and tested load capacity

Dynamic 300 kg

Static 370 kg

Temperature range:

Continuous operation: -25 | +80°C

Short (10 min) exposure: -30 | +110°C

Advantages of this Glide through the hall wheel:

- ✓ chemical resistance
- ✓ load capacity and shock impact resistant
- ✓ high temperature shifts

LIV SYSTEMS standard wheel + solid polyamide wheel Ø200 x W50mm for 300kg Prod ID: 66702

ID 66702: standard Wheel with roller bearing and solid polyamide wheel with hardness 70±5 Shore D | Axle hole: 20 mm | Hub length: 58 mm | Glide through the hall, good chemical resistance, high load capacity and shock impact resistant, for high temperature

Product information

- Article code 2-754 ISO
- SKU 66702
- EAN 3838461667022



Product description

standard Wheel with plain bearing and solid polyamide wheel with hardness 70±5 Shore D

Wheel diameter x width: 200 x 50 mm

Axle hole: 20 mm

Hub length: 58 mm

Approved and tested load capacity

Dynamic 300 kg

Static 370 kg

Temperature range:

Continuous operation: -25 | +80°C

Short (10 min) exposure: -30 | +110°C

Advantages of this Glide through the hall wheel:

- ✓ chemical resistance
- ✓ load capacity and shock impact resistant
- ✓ high temperature shifts

LIV SYSTEMS standard wheel + solid polyamide wheel Ø200 x W50mm for 300kg Prod ID: 66717

ID 66717: standard Wheel with plain bearing and solid polyamide wheel with hardness 70±5 Shore D | Axle hole: 20 mm | Hub length: 58 mm | Glide through the hall, good chemical resistance, high load capacity and shock impact resistant, for high temperature

Product information

- Article code 2-764 ISO
- SKU 66717
- EAN 3838461667176



Product description

standard Wheel with plain bearing and solid polyamide wheel with hardness 70±5 Shore D

Wheel diameter x width: 200 x 40 mm

Axle hole: 20 mm

Hub length: 50 mm

Approved and tested load capacity

Dynamic 450 kg

Static 560 kg

Temperature range:

Continuous operation: -25 | +80°C

Short (10 min) exposure: -30 | +110°C

Advantages of this Glide through the hall wheel:

- ✓ chemical resistance
- ✓ load capacity and shock impact resistant
- ✓ high temperature shifts

LIV SYSTEMS standard wheel + solid polyamide wheel Ø200 x W40mm for 450kg Prod ID: 30183

ID 30183: standard Wheel with plain bearing and solid polyamide wheel with hardness 70±5 Shore D | Axle hole: 20 mm | Hub length: 50 mm | Glide through the hall, good chemical resistance, high load capacity and shock impact resistant, for high temperature

Product information

- Article code 2-764 A
- SKU 30183
- EAN 3838461301834



Product description

standard Wheel with plain bearing and solid polyamide wheel with hardness 70±5 Shore D

Wheel diameter x width: 200 x 50 mm

Axle hole: 20 mm

Hub length: 58 mm

Approved and tested load capacity

Dynamic 300 kg

Static 370 kg

Temperature range:

Continuous operation: -25 | +80°C

Short (10 min) exposure: -30 | +110°C

Advantages of this Glide through the hall wheel:

- ✓ chemical resistance
- ✓ load capacity and shock impact resistant
- ✓ high temperature shifts

LIV SYSTEMS standard wheel + solid polyamide wheel Ø200 x W50mm for 300kg Prod ID: 66712

ID 66712: standard Wheel with plain bearing and solid polyamide wheel with hardness 70±5 Shore D | Axle hole: 20 mm | Hub length: 58 mm | Glide through the hall, good chemical resistance, high load capacity and shock impact resistant, for high temperature

Product information

- Article code 2-764 ISO
- SKU 66712
- EAN 3838461667121



Product description

standard Wheel with plain bearing and solid polyamide wheel with hardness 70±5 Shore D

Wheel diameter x width: 200 x 40 mm

Axle hole: 20 mm

Hub length: 50 mm

Approved and tested load capacity

Dynamic 450 kg

Static 560 kg

Temperature range:

Continuous operation: -25 | +80°C

Short (10 min) exposure: -30 | +110°C

Advantages of this Glide through the hall wheel:

- ✓ chemical resistance
- ✓ load capacity and shock impact resistant
- ✓ high temperature shifts

LIV SYSTEMS standard wheel + solid polyamide wheel Ø200 x W40mm for 450kg Prod ID: 32884

ID 32884: standard Wheel with plain bearing and solid polyamide wheel with hardness 70±5 Shore D | Axle hole: 20 mm | Hub length: 50 mm | Glide through the hall, good chemical resistance, high load capacity and shock impact resistant, for high temperature

Product information

- Article code 2-764 A
- SKU 32884
- EAN 3838461328848



Product description

standard Wheel with roller bearing and solid polyamide wheel with hardness 70±5 Shore D

Wheel diameter x width: 200 x 50 mm

Axle hole: 20 mm

Hub length: 58 mm

Approved and tested load capacity

Dynamic 300 kg

Static 370 kg

Temperature range:

Continuous operation: -25 | +80°C

Short (10 min) exposure: -30 | +110°C

Advantages of this Glide through the hall wheel:

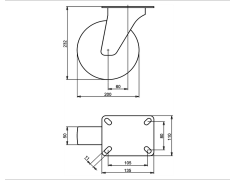
- ✓ chemical resistance
- ✓ load capacity and shock impact resistant
- ✓ high temperature shifts

LIV SYSTEMS standard wheel + solid polyamide wheel Ø200 x W50mm for 300kg Prod ID: 66707

ID 66707: standard Wheel with roller bearing and solid polyamide wheel with hardness 70±5 Shore D | Axle hole: 20 mm | Hub length: 58 mm | Glide through the hall, good chemical resistance, high load capacity and shock impact resistant, for high temperature

Product information

- Article code 2-754 ISO
- SKU 66707
- EAN 3838461667077



Product description

standard Swivel castor with an overall height of 232 mm

Wheel diameter x width: 200 x 50 mm

Top plate with 4 mounting holes of 11 mm, mounting hole distance 105x80 mm and top plate outer dimensions: 135x110 mm

Wheel with roller bearing and solid polyamide wheel with hardness 70±5 Shore D.

Approved and tested load capacity

Dynamic 300 kg

Static 370 kg

Temperature range:

Continuous operation: -25 | +80°C

Short (10 min) exposure: -30 | +110°C

Advantages of this Glide through the hall Swivel castor:

- ✓ chemical resistance
- ✓ load capacity and shock impact resistant
- ✓ high temperature shifts

LIV SYSTEMS standard Swivel castor + solid polyamide wheel Ø200 x W50mm for 300kg Prod ID: 66732

ID 66732: Castor overall height 232 mm | 4 mounting holes with distance 105x80 mm | Wheel with roller bearing and solid polyamide wheel with hardness 70±5 Shore D | Glide through the hall, good chemical resistance, high load capacity and shock impact res

Product information

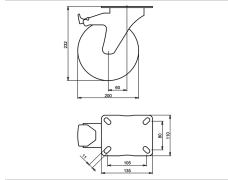
- Article code 2-664 ISO
- SKU 66732
- EAN 3838461667329

Specifications

The result of our quality is maximum performance!

[Close](#)

[Close](#)



Product description

standard Swivel castor with brake with an overall height of 232 mm

Wheel diameter x width: 200 x 50 mm

Top plate with 4 mounting holes of 11 mm, mounting hole distance 105x80 mm and top plate outer dimensions: 135x110 mm

Wheel with plain bearing and solid polyamide wheel with hardness 70±5 Shore D

the double brake system, brakes the turning of the wheel and the swivel rotation.

Approved and tested load capacity

Dynamic 300 kg

Static 370 kg

Temperature range:

Continuous operation: -25 | +80°C

Short (10 min) exposure: -30 | +110°C

Advantages of this Glide through the hall Swivel castor with brake:

- ✓ chemical resistance
- ✓ load capacity and shock impact resistant
- ✓ high temperature shifts

LIV SYSTEMS standard Swivel castor with brake + solid polyamide wheel Ø200 x W50mm for 300kg Prod ID: 30483

ID 30483: Castor overall height 232 mm | 4 mounting holes with distance 105x80 mm | Wheel with plain bearing and solid polyamide wheel with hardness 70±5 Shore D |

The double brake system, brakes the turning of the wheel and the swivel rotation. | Glide

Product information

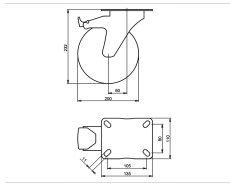
- Article code 2-687 A
- SKU 30483
- EAN 3838461304835

Specifications

The result of our quality is maximum performance!

[Close](#)

[Close](#)



Product description

standard Swivel castor with brake with an overall height of 232 mm

Wheel diameter x width: 200 x 50 mm

Top plate with 4 mounting holes of 11 mm, mounting hole distance 105x80 mm and top plate outer dimensions: 135x110 mm

Wheel with roller bearing and solid polyamide wheel with hardness 70±5 Shore D

the double brake system, brakes the turning of the wheel and the swivel rotation.

Approved and tested load capacity

Dynamic 300 kg

Static 370 kg

Temperature range:

Continuous operation: -25 | +80°C

Short (10 min) exposure: -30 | +110°C

Advantages of this Glide through the hall Swivel castor with brake:

- ✓ chemical resistance
- ✓ load capacity and shock impact resistant
- ✓ high temperature shifts

LIV SYSTEMS standard Swivel castor with brake + solid polyamide wheel Ø200 x W50mm for 300kg Prod ID: 30475

ID 30475: Castor overall height 232 mm | 4 mounting holes with distance 105x80 mm | Wheel with roller bearing and solid polyamide wheel with hardness 70±5 Shore D |

The double brake system, brakes the turning of the wheel and the swivel rotation. | Glide

Product information

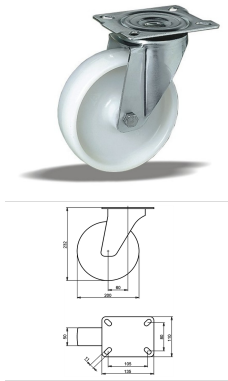
- Article code 2-726 A
- SKU 30475
- EAN 3838461304750

Specifications

The result of our quality is maximum performance!

[Close](#)

[Close](#)



Product description

standard Swivel castor with an overall height of 232 mm

Wheel diameter x width: 200 x 50 mm

Top plate with 4 mounting holes of 11 mm, mounting hole distance 105x80 mm and top plate outer dimensions: 135x110 mm

Wheel with plain bearing and solid polyamide wheel with hardness 70±5 Shore D.

Approved and tested load capacity

Dynamic 300 kg

Static 370 kg

Temperature range:

Continuous operation: -25 | +80°C

Short (10 min) exposure: -30 | +110°C

Advantages of this Glide through the hall Swivel castor:

- ✓ chemical resistance
- ✓ load capacity and shock impact resistant
- ✓ high temperature shifts

LIV SYSTEMS standard Swivel castor + solid polyamide wheel Ø200 x W50mm for 300kg Prod ID: 66851

ID 66851: Castor overall height 232 mm | 4 mounting holes with distance 105x80 mm | Wheel with plain bearing and solid polyamide wheel with hardness 70±5 Shore D | Glide through the hall, good chemical resistance, high load capacity and shock impact resi

Product information

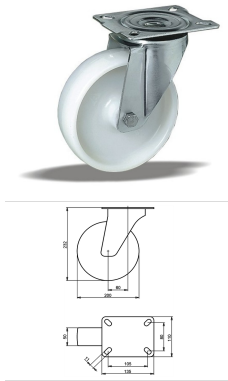
- Article code 2-674 ISO
- SKU 66851
- EAN 3838461668517

Specifications

The result of our quality is maximum performance!

[Close](#)

[Close](#)



Product description

standard Swivel castor with an overall height of 232 mm

Wheel diameter x width: 200 x 50 mm

Top plate with 4 mounting holes of 11 mm, mounting hole distance 105x80 mm and top plate outer dimensions: 135x110 mm

Wheel with roller bearing and solid polyamide wheel with hardness 70±5 Shore D.

Approved and tested load capacity

Dynamic 300 kg

Static 370 kg

Temperature range:

Continuous operation: -25 | +80°C

Short (10 min) exposure: -30 | +110°C

Advantages of this Glide through the hall Swivel castor:

- ✓ chemical resistance
- ✓ load capacity and shock impact resistant
- ✓ high temperature shifts

LIV SYSTEMS standard Swivel castor + solid polyamide wheel Ø200 x W50mm for 300kg Prod ID: 66735

ID 66735: Castor overall height 232 mm | 4 mounting holes with distance 105x80 mm | Wheel with roller bearing and solid polyamide wheel with hardness 70±5 Shore D | Glide through the hall, good chemical resistance, high load capacity and shock impact res

Product information

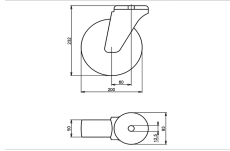
- Article code 2-664 ISO
- SKU 66735
- EAN 3838461667350

Specifications

The result of our quality is maximum performance!

[Close](#)

[Close](#)



Product description

standard Swivel castor with an overall height of 232 mm

Wheel diameter x width: 200 x 50 mm

Top plate with 4 mounting holes of 12,5 mm, mounting hole distance #\$\$ mm and top plate outer dimensions: 93 mm

Wheel with plain bearing and solid polyamide wheel with hardness 70±5 Shore D.

Approved and tested load capacity

Dynamic 300 kg

Static 370 kg

Temperature range:

Continuous operation: -25 | +80°C

Short (10 min) exposure: -30 | +110°C

Advantages of this Glide through the hall Swivel castor:

- ✓ chemical resistance
- ✓ load capacity and shock impact resistant
- ✓ high temperature shifts

LIV SYSTEMS standard Swivel castor + solid polyamide wheel Ø200 x W50mm for 300kg Prod ID: 34443

ID 34443: Castor overall height 232 mm | 4 mounting holes with distance #\$\$ mm | Wheel with plain bearing and solid polyamide wheel with hardness 70±5 Shore D | Glide through the hall, good chemical resistance, high load capacity and shock impact resista

Product information

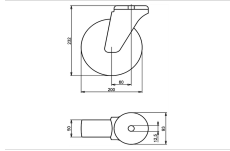
- Article code 2-769 L12
- SKU 34443
- EAN 3838461344435

Specifications

The result of our quality is maximum performance!

[Close](#)

[Close](#)



Product description

standard Swivel castor with an overall height of 232 mm

Wheel diameter x width: 200 x 50 mm

Top plate with 4 mounting holes of 12,5 mm, mounting hole distance #\$\$ mm and top plate outer dimensions: 93 mm

Wheel with roller bearing and solid polyamide wheel with hardness 70±5 Shore D.

Approved and tested load capacity

Dynamic 300 kg

Static 370 kg

Temperature range:

Continuous operation: -25 | +80°C

Short (10 min) exposure: -30 | +110°C

Advantages of this Glide through the hall Swivel castor:

- ✓ chemical resistance
- ✓ load capacity and shock impact resistant
- ✓ high temperature shifts

LIV SYSTEMS standard Swivel castor + solid polyamide wheel Ø200 x W50mm for 300kg Prod ID: 34434

ID 34434: Castor overall height 232 mm | 4 mounting holes with distance #\$\$ mm | Wheel with roller bearing and solid polyamide wheel with hardness 70±5 Shore D | Glide through the hall, good chemical resistance, high load capacity and shock impact resist

Product information

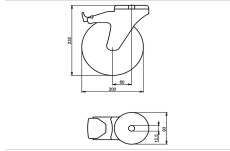
- Article code 2-759 L12
- SKU 34434
- EAN 3838461344343

Specifications

The result of our quality is maximum performance!

[Close](#)

[Close](#)



Product description

standard Swivel castor with brake with an overall height of 232 mm
 Wheel diameter x width: 200 x 50 mm
 Top plate with 4 mounting holes of 12,5 mm, mounting hole distance #\$\$ mm and top plate outer dimensions: 93 mm
 Wheel with plain bearing and solid polyamide wheel with hardness 70±5 Shore D
 the double brake system, brakes the turning of the wheel and the swivel rotation.

Approved and tested load capacity

Dynamic 300 kg
 Static 370 kg

Temperature range:

Continuous operation: -25 | +80°C
 Short (10 min) exposure: -30 | +110°C

Advantages of this Glide through the hall Swivel castor with brake:

- ✓ chemical resistance
- ✓ load capacity and shock impact resistant
- ✓ high temperature shifts

LIV SYSTEMS standard Swivel castor with brake + solid polyamide wheel Ø200 x W50mm for 300kg Prod ID: 34694

ID 34694: Castor overall height 232 mm | 4 mounting holes with distance #\$\$ mm | Wheel with plain bearing and solid polyamide wheel with hardness 70±5 Shore D | The double brake system, brakes the turning of the wheel and the swivel rotation. | Glide thr

Product information

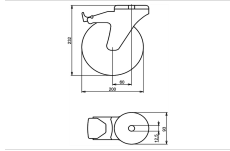
- Article code 2-799 L12
- SKU 34694
- EAN 3838461346941

Specifications

The result of our quality is maximum performance!

[Close](#)

[Close](#)



Product description

standard Swivel castor with brake with an overall height of 232 mm
 Wheel diameter x width: 200 x 50 mm
 Top plate with 4 mounting holes of 12,5 mm, mounting hole distance #\$\$ mm and top plate outer dimensions: 93 mm
 Wheel with roller bearing and solid polyamide wheel with hardness 70±5 Shore D
 the double brake system, brakes the turning of the wheel and the swivel rotation.

Approved and tested load capacity

Dynamic 300 kg
 Static 370 kg

Temperature range:

Continuous operation: -25 | +80°C
 Short (10 min) exposure: -30 | +110°C

Advantages of this Glide through the hall Swivel castor with brake:

- ✓ chemical resistance
- ✓ load capacity and shock impact resistant
- ✓ high temperature shifts

LIV SYSTEMS standard Swivel castor with brake + solid polyamide wheel Ø200 x W50mm for 300kg Prod ID: 34693

ID 34693: Castor overall height 232 mm | 4 mounting holes with distance #\$\$ mm | Wheel with roller bearing and solid polyamide wheel with hardness 70±5 Shore D | The double brake system, brakes the turning of the wheel and the swivel rotation. | Glide th

Product information

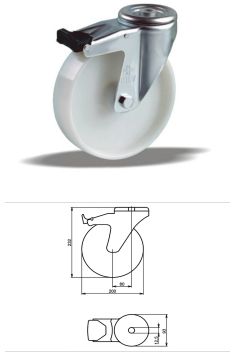
- Article code 2-792 L12
- SKU 34693
- EAN 3838461346934

Specifications

The result of our quality is maximum performance!

[Close](#)

[Close](#)



Product description

standard Swivel castor with brake with an overall height of 232 mm
 Wheel diameter x width: 200 x 50 mm
 Top plate with 4 mounting holes of 12,5 mm, mounting hole distance #\$\$ mm and top plate outer dimensions: 93 mm
 Wheel with plain bearing and solid polyamide wheel with hardness 70±5 Shore D
 the double brake system, brakes the turning of the wheel and the swivel rotation.

Approved and tested load capacity

Dynamic 300 kg
 Static 370 kg

Temperature range:

Continious operation: -25 | +80°C
 Short (10 min) exposure: -30 | +110°C

Advantages of this Glide through the hall Swivel castor with brake:

- ✓ chemical resistance
- ✓ load capacity and shock impact resistant
- ✓ high temperature shifts

LIV SYSTEMS standard Swivel castor with brake + solid polyamide wheel Ø200 x W50mm for 300kg Prod ID: 34744

ID 34744: Castor overall height 232 mm | 4 mounting holes with distance #\$\$ mm | Wheel with plain bearing and solid polyamide wheel with hardness 70±5 Shore D | The double brake system, brakes the turning of the wheel and the swivel rotation. | Glide thr

Product information

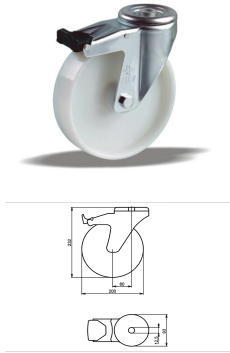
- Article code 2-799 L12
- SKU 34744
- EAN 3838461347443

Specifications

The result of our quality is maximum performance!

[Close](#)

[Close](#)



Product description

standard Swivel castor with brake with an overall height of 232 mm
 Wheel diameter x width: 200 x 50 mm
 Top plate with 4 mounting holes of 12,5 mm, mounting hole distance #\$\$ mm and top plate outer dimensions: 93 mm
 Wheel with roller bearing and solid polyamide wheel with hardness 70±5 Shore D
 the double brake system, brakes the turning of the wheel and the swivel rotation.

Approved and tested load capacity

Dynamic 300 kg
 Static 370 kg

Temperature range:

Continious operation: -25 | +80°C
 Short (10 min) exposure: -30 | +110°C

Advantages of this Glide through the hall Swivel castor with brake:

- ✓ chemical resistance
- ✓ load capacity and shock impact resistant
- ✓ high temperature shifts

LIV SYSTEMS standard Swivel castor with brake + solid polyamide wheel Ø200 x W50mm for 300kg Prod ID: 34743

ID 34743: Castor overall height 232 mm | 4 mounting holes with distance #\$\$ mm | Wheel with roller bearing and solid polyamide wheel with hardness 70±5 Shore D | The double brake system, brakes the turning of the wheel and the swivel rotation. | Glide th

Product information

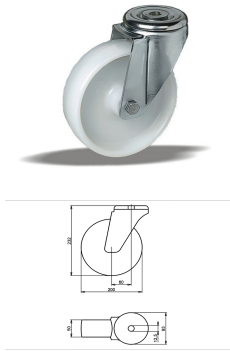
- Article code 2-792 L12
- SKU 34743
- EAN 3838461347436

Specifications

The result of our quality is maximum performance!

[Close](#)

[Close](#)



Product description

standard Swivel castor with an overall height of 232 mm

Wheel diameter x width: 200 x 50 mm

Top plate with 4 mounting holes of 12,5 mm, mounting hole distance #\$\$ mm and top plate outer dimensions: 93 mm

Wheel with plain bearing and solid polyamide wheel with hardness 70±5 Shore D.

Approved and tested load capacity

Dynamic 300 kg

Static 370 kg

Temperature range:

Continuous operation: -25 | +80°C

Short (10 min) exposure: -30 | +110°C

Advantages of this Glide through the hall Swivel castor:

- ✓ chemical resistance
- ✓ load capacity and shock impact resistant
- ✓ high temperature shifts

LIV SYSTEMS standard Swivel castor + solid polyamide wheel Ø200 x W50mm for 300kg Prod ID: 34503

ID 34503: Castor overall height 232 mm | 4 mounting holes with distance #\$\$ mm | Wheel with plain bearing and solid polyamide wheel with hardness 70±5 Shore D | Glide through the hall, good chemical resistance, high load capacity and shock impact resista

Product information

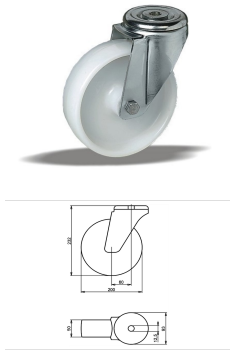
- Article code 2-769 L12
- SKU 34503
- EAN 3838461345036

Specifications

The result of our quality is maximum performance!

[Close](#)

[Close](#)



Product description

standard Swivel castor with an overall height of 232 mm

Wheel diameter x width: 200 x 50 mm

Top plate with 4 mounting holes of 12,5 mm, mounting hole distance #\$\$ mm and top plate outer dimensions: 93 mm

Wheel with roller bearing and solid polyamide wheel with hardness 70±5 Shore D.

Approved and tested load capacity

Dynamic 300 kg

Static 370 kg

Temperature range:

Continuous operation: -25 | +80°C

Short (10 min) exposure: -30 | +110°C

Advantages of this Glide through the hall Swivel castor:

- ✓ chemical resistance
- ✓ load capacity and shock impact resistant
- ✓ high temperature shifts

LIV SYSTEMS standard Swivel castor + solid polyamide wheel Ø200 x W50mm for 300kg Prod ID: 34485

ID 34485: Castor overall height 232 mm | 4 mounting holes with distance #\$\$ mm | Wheel with roller bearing and solid polyamide wheel with hardness 70±5 Shore D | Glide through the hall, good chemical resistance, high load capacity and shock impact resist

Product information

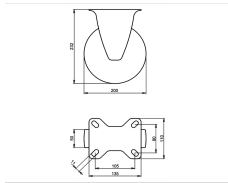
- Article code 2-759 L12
- SKU 34485
- EAN 3838461344855

Specifications

The result of our quality is maximum performance!

[Close](#)

[Close](#)



Product description

standard Fixed castor with an overall height of 232 mm

Wheel diameter x width: 200 x 50 mm

Top plate with 4 mounting holes of 11 mm, mounting hole distance 105x80 mm and top plate outer dimensions: 135x110 mm

Wheel with plain bearing and solid polyamide wheel with hardness 70±5 Shore D.

Approved and tested load capacity

Dynamic 300 kg

Static 370 kg

Temperature range:

Continuous operation: -25 | +80°C

Short (10 min) exposure: -30 | +110°C

Advantages of this Glide through the hall Fixed castor:

- ✓ chemical resistance
- ✓ load capacity and shock impact resistant
- ✓ high temperature shifts

LIV SYSTEMS standard Fixed castor + solid polyamide wheel Ø200 x W50mm for 300kg Prod ID: 67013

ID 67013: Castor overall height 232 mm | 4 mounting holes with distance 105x80 mm | Wheel with plain bearing and solid polyamide wheel with hardness 70±5 Shore D |

Glide through the hall, good chemical resistance, high load capacity and shock impact resi

Product information

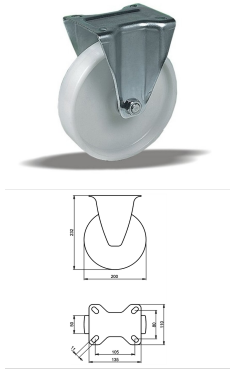
- Article code 2-679 ISO
- SKU 67013
- EAN 3838461670138

Specifications

The result of our quality is maximum performance!

[Close](#)

[Close](#)



Product description

standard Fixed castor with an overall height of 232 mm

Wheel diameter x width: 200 x 50 mm

Top plate with 4 mounting holes of 11 mm, mounting hole distance 105x80 mm and top plate outer dimensions: 135x110 mm

Wheel with plain bearing and solid polyamide wheel with hardness 70±5 Shore D.

Approved and tested load capacity

Dynamic 300 kg

Static 370 kg

Temperature range:

Continuous operation: -25 | +80°C

Short (10 min) exposure: -30 | +110°C

Advantages of this Glide through the hall Fixed castor:

- ✓ chemical resistance
- ✓ load capacity and shock impact resistant
- ✓ high temperature shifts

LIV SYSTEMS standard Fixed castor + solid polyamide wheel Ø200 x W50mm for 300kg Prod ID: 67018

ID 67018: Castor overall height 232 mm | 4 mounting holes with distance 105x80 mm | Wheel with plain bearing and solid polyamide wheel with hardness 70±5 Shore D | Glide through the hall, good chemical resistance, high load capacity and shock impact resi

Product information

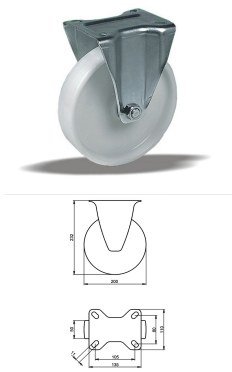
- Article code 2-679 ISO
- SKU 67018
- EAN 3838461670183

Specifications

The result of our quality is maximum performance!

[Close](#)

[Close](#)



Product description

standard Fixed castor with an overall height of 232 mm

Wheel diameter x width: 200 x 50 mm

Top plate with 4 mounting holes of 11 mm, mounting hole distance 105x80 mm and top plate outer dimensions: 135x110 mm

Wheel with roller bearing and solid polyamide wheel with hardness 70±5 Shore D.

Approved and tested load capacity

Dynamic 300 kg

Static 370 kg

Temperature range:

Continuous operation: -25 | +80°C

Short (10 min) exposure: -30 | +110°C

Advantages of this Glide through the hall Fixed castor:

- ✓ chemical resistance
- ✓ load capacity and shock impact resistant
- ✓ high temperature shifts

LIV SYSTEMS standard Fixed castor + solid polyamide wheel Ø200 x W50mm for 300kg Prod ID: 67003

ID 67003: Castor overall height 232 mm | 4 mounting holes with distance 105x80 mm | Wheel with roller bearing and solid polyamide wheel with hardness 70±5 Shore D | Glide through the hall, good chemical resistance, high load capacity and shock impact res

Product information

- Article code 2-669 ISO
- SKU 67003
- EAN 3838461670039

Specifications

The result of our quality is maximum performance!

Алматы (7273)495-231
Ангарск (3955)60-70-56
Архангельск (8182)63-90-72
Астрахань (8512)99-46-04
Барнаул (3852)73-04-60
Белгород (4722)40-23-64
Благовещенск (4162)22-76-07
Брянск (4832)59-03-52
Владивосток (423)249-28-31
Владикавказ (8672)28-90-48
Владимир (4922)49-43-18
Волгоград (844)278-03-48
Вологда (8172)26-41-59
Воронеж (473)204-51-73
Екатеринбург (343)384-55-89

Иваново (4932)77-34-06
Ижевск (3412)26-03-58
Иркутск (395)279-98-46
Казань (843)206-01-48
Калининград (4012)72-03-81
Калуга (4842)92-23-67
Кемерово (3842)65-04-62
Киров (8332)68-02-04
Коломна (4966)23-41-49
Кострома (4942)77-07-48
Краснодар (861)203-40-90
Красноярск (391)204-63-61
Курск (4712)77-13-04
Курган (3522)50-90-47
Липецк (4742)52-20-81

Магнитогорск (3519)55-03-13
Москва (495)268-04-70
Мурманск (8152)59-64-93
Набережные Челны (8552)20-53-41
Нижний Новгород (831)429-08-12
Новокузнецк (3843)20-46-81
Новосибирск (383)227-86-73
Омск (3812)21-46-40
Орел (4862)44-53-42
Оренбург (3532)37-68-04
Пенза (8412)22-31-16
Петрозаводск (8142)55-98-37
Псков (8112)59-10-37
Пермь (342)205-81-47

Ростов-на-Дону (863)308-18-15
Рязань (4912)46-61-64
Самара (846)206-03-16
Санкт-Петербург (812)309-46-80
Саратов (845)249-38-78
Севастополь (8692)22-31-93
Саранск (8342)22-96-24
Симферополь (3652)67-13-56
Смоленск (4812)29-41-54
Сочи (862)225-72-31
Ставрополь (8652)20-65-13
Сургут (3462)77-98-35
Сыктывкар (8212)25-95-17
Тамбов (4752)50-40-97
Тверь (4822)63-31-35

Тольятти (8482)63-91-07
Томск (3822)98-41-53
Тула (4872)33-79-87
Тюмень (3452)66-21-18
Ульяновск (8422)24-23-59
Улан-Удэ (3012)59-97-51
Уфа (347)229-48-12
Хабаровск (4212)92-98-04
Челябинск (351)202-03-61
Череповец (8202)49-02-64
Чита (3022)38-34-83
Якутск (4112)23-90-97
Ярославль (4852)69-52-93

Россия +7(495)268-04-70

Казахстан +7(7172)727-132

Киргизия +996(312)96-26-47

<https://liv.nt-rt.ru/> || vis@nt-rt.ru