

Алматы (7273)495-231
Ангарск (3955)60-70-56
Архангельск (8182)63-90-72
Астрахань (8512)99-46-04
Барнаул (3852)73-04-60
Белгород (4722)40-23-64
Благовещенск (4162)22-76-07
Брянск (4832)59-03-52
Владивосток (423)249-28-31
Владикавказ (8672)28-90-48
Владимир (4922)49-43-18
Волгоград (844)278-03-48
Вологда (8172)26-41-59
Воронеж (473)204-51-73
Екатеринбург (343)384-55-89

Иваново (4932)77-34-06
Ижевск (3412)26-03-58
Иркутск (395)279-98-46
Казань (843)206-01-48
Калининград (4012)72-03-81
Калуга (4842)92-23-67
Кемерово (3842)65-04-62
Киров (8332)68-02-04
Коломна (4966)23-41-49
Кострома (4942)77-07-48
Краснодар (861)203-40-90
Красноярск (391)204-63-61
Курск (4712)77-13-04
Курган (3522)50-90-47
Липецк (4742)52-20-81

Магнитогорск (3519)55-03-13
Москва (495)268-04-70
Мурманск (8152)59-64-93
Набережные Челны (8552)20-53-41
Нижний Новгород (831)429-08-12
Новокузнецк (3843)20-46-81
Ноябрьск (3496)41-32-12
Новосибирск (383)227-86-73
Омск (3812)21-46-40
Орел (4862)44-53-42
Оренбург (3532)37-68-04
Пенза (8412)22-31-16
Петрозаводск (8142)55-98-37
Псков (8112)59-10-37
Пермь (342)205-81-47

Ростов-на-Дону (863)308-18-15
Рязань (4912)46-61-64
Самара (846)206-03-16
Санкт-Петербург (812)309-46-40
Саратов (845)249-38-78
Севастополь (8692)22-31-93
Саранск (8342)22-96-24
Симферополь (3652)67-13-56
Смоленск (4812)29-41-54
Сочи (862)225-72-31
Ставрополь (8652)20-65-13
Сургут (3462)77-98-35
Сыктывкар (8212)25-95-17
Тамбов (4752)50-40-97
Тверь (4822)63-31-35

Тольятти (8482)63-91-07
Томск (3822)98-41-53
Тула (4872)33-79-87
Тюмень (3452)66-21-18
Ульяновск (8422)24-23-59
Улан-Уда (3012)59-97-51
Уфа (347)229-48-12
Хабаровск (4212)92-98-04
Чебоксары (8352)28-53-07
Челябинск (351)202-03-61
Череповец (8202)49-02-64
Чита (3022)38-34-83
Якутск (4112)23-90-97
Ярославль (4852)69-52-93

Россия +7(495)268-04-70

Казахстан +7(7172)727-132

Киргизия +996(312)96-26-47

<https://liv.nt-rt.ru/> || vis@nt-rt.ru



Product description

furniture Swivel castor with brake with an overall height of 120 mm

Wheel diameter x width: 100 x 25 mm

Top plate with 4 mounting holes of 10,5 mm, mounting hole distance #5% mm and top plate outer dimensions: 47 mm

Wheel with plain bearing and rubber tyre with hardness 83 ° Shore A on polypropylene

the double brake system, brakes the turning of the wheel and the swivel rotation.

Approved and tested load capacity

Dynamic 60 kg

Static 70 kg

Temperature range:

Continuous operation: -20 | +70°C

Short (10 min) exposure: -30 | +80°C

Advantages of this Silent move Swivel castor with brake:

- ✓ friendly
- ✓ non intrusive
- ✓ base

LIV SYSTEMS furniture Swivel castor with brake + rubber tyre Ø100 x W25mm for 60kg Prod ID: 39135

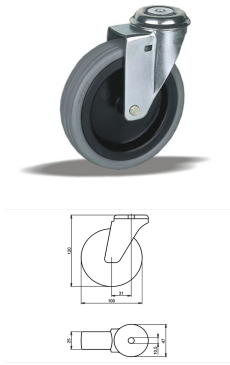
ID 39135: Castor overall height 120 mm | 4 mounting holes with distance #5% mm | Wheel with plain bearing and rubber tyre with hardness 83 ° Shore A | The double brake system, brakes the turning of the wheel and the swivel rotation. | Silent move, surface

Product information

- Article code 2-821 I1
- SKU 39135
- EAN 3838461391354

Specifications

The result of our quality is maximum performance!



Product description

furniture Swivel castor with an overall height of 120 mm

Wheel diameter x width: 100 x 25 mm

Top plate with 4 mounting holes of 10,5 mm, mounting hole distance #\$\$ mm and top plate outer dimensions: 47 mm

Wheel with plain bearing and polyethylene tread with hardness 92 ° Shore A on polypropylene.

Approved and tested load capacity

Dynamic 80 kg

Static 100 kg

Temperature range:

Continuous operation: -20 | +60°C

Short (10 min) exposure: -30 | +80°C

Advantages of this Invisible foundation Swivel castor:

- ✓ deformation if rarely moved
- ✓ markings on the floor
- ✓ to turn

LIV SYSTEMS furniture Swivel castor + polyethylene tread Ø100 x W25mm for 80kg Prod ID: 39185

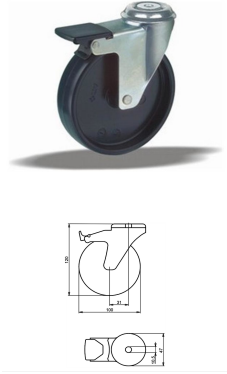
ID 39185: Castor overall height 120 mm | 4 mounting holes with distance #\$\$ mm | Wheel with plain bearing and polyethylene tread with hardness 92 ° Shore A | Invisible foundation, low deformation if rarely moved, no markings on the floor, easy to turn

Product information

- Article code 2-840 T10
- SKU 39185
- EAN 3838461391859

Specifications

The result of our quality is maximum performance!



Product description

Furniture Swivel castor with brake with an overall height of 120 mm.

Wheel diameter x width: 100 x 25 mm.

Top plate with 4 mounting holes of 10,5 mm, mounting hole distance #\$\$ mm and top plate outer dimensions: 47 mm.

Wheel with plain bearing and solid polypropylene wheel with hardness 60 ± 5 ° Shore D.

The double brake system, brakes the turning of the wheel and the swivel rotation. .

Approved and tested load capacity:

Dynamic: 80 kg

Static: 100 kg

Temperature range:

Continuous operation: -20 | +60°C

Short (10 min) exposure: /°C

Advantages of furniture Swivel castor with brake:

✓ attractive design

✓ rotating on spot

LIV SYSTEMS furniture Swivel castor with brake + solid polypropylene wheel Ø100 x W25mm for 80kg Prod ID: 40744

ID 40744: Castor overall height 120 mm | 4 mounting holes with distance #\$\$ mm | Wheel with plain bearing and solid polypropylene wheel with hardness 60 ± 5 ° Shore D | The double brake system, brakes the turning of the wheel and the swivel rotation. | Ess

Product information

- Article code 2-848 B10
- SKU 40744
- EAN 3838461407444

Specifications

The result of our quality is maximum performance!



Product description

Furniture Swivel castor with brake with an overall height of 120 mm.

Wheel diameter x width: 100 x 25 mm.

Top plate with 4 mounting holes of 6,5 mm, mounting hole distance 46 x 46 mm and top plate outer dimensions: 60 x 60 mm.

Wheel with plain bearing and solid polypropylene wheel with hardness 60 ± 5 ° Shore D
the double brake system, brakes the turning of the wheel and the swivel rotation.

Approved and tested load capacity:

Dynamic: 80 kg

Static: 100 kg

Temperature range:

Continuous operation: -20 | $+60$ °C

Short (10 min) exposure: /°C

Advantages of Swivel castor with brake:

- ✓ attractive design
- ✓ rotating on spot

LIV SYSTEMS furniture Swivel castor with brake + solid polypropylene wheel Ø100 x W25mm for 80kg Prod ID: 35135

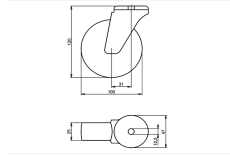
ID 35135: Castor overall height 120 mm | 4 mounting holes with distance 46x46 mm | Wheel with plain bearing and solid polypropylene wheel with hardness 60 ± 5 ° Shore D | The double brake system, brakes the turning of the wheel and the swivel rotation. | E

Product information

- Article code 2-848 A1
- SKU 35135
- EAN 3838461351358

Specifications

The result of our quality is maximum performance!



Product description

furniture Swivel castor with an overall height of 120 mm

Wheel diameter x width: 100 x 25 mm

Top plate with 4 mounting holes of 10,5 mm, mounting hole distance #\$\$ mm and top plate outer dimensions: 47 mm

Wheel with plain bearing and solid polypropylene wheel with hardness 60±5 ° Shore D.

Approved and tested load capacity

Dynamic 80 kg

Static 100 kg

Temperature range:

Continuous operation: -20 | +60°C

Short (10 min) exposure: /°C

Advantages of this Essential relocation Swivel castor:

- ✓ attractive design
- ✓
- ✓ rotating on spot

LIV SYSTEMS furniture Swivel castor + solid polypropylene wheel Ø100 x W25mm for 80kg Prod ID: 40735

ID 40735: Castor overall height 120 mm | 4 mounting holes with distance #\$\$ mm | Wheel with plain bearing and solid polypropylene wheel with hardness 60±5 ° Shore D | Essential relocation, visually attractive design, economical, easy rotating on spot

Product information

- Article code 2-840 B10
- SKU 40735
- EAN 3838461407352

Specifications

The result of our quality is maximum performance!



Product description

furniture Swivel castor with an overall height of 120 mm

Wheel diameter x width: 100 x 25 mm

Top plate with 4 mounting holes of 6,5 mm, mounting hole distance 46x46 mm and top plate outer dimensions: 60x60 mm

Wheel with plain bearing and solid polypropylene wheel with hardness 60 ± 5 ° Shore D.

Approved and tested load capacity

Dynamic 80 kg

Static 100 kg

Temperature range:

Continuous operation: -20 | $+60$ °C

Short (10 min) exposure: / °C

Advantages of this Essential relocation Swivel castor:

✓ attractive design

✓

✓ rotating on spot

LIV SYSTEMS furniture Swivel castor + solid polypropylene wheel Ø100 x W25mm for 80kg Prod ID: 33645

ID 33645: Castor overall height 120 mm | 4 mounting holes with distance 46x46 mm | Wheel with plain bearing and solid polypropylene wheel with hardness 60 ± 5 ° Shore D | Essential relocation, visually attractive design, economical, easy rotating on spot

Product information

- Article code 2-840 A
- SKU 33645
- EAN 3838461336454



Product description

furniture Wheel with plain bearing and solid polypropylene wheel with hardness 60 ± 5 ° Shore D

Wheel diameter x width: 100 x 25 mm

Axle hole: 6 mm

Hub length: 27,5 mm

Approved and tested load capacity

Dynamic 80 kg

Static 100 kg

Temperature range:

Continuous operation: -20 | $+60$ °C

Short (10 min) exposure: /°C

Advantages of this Essential relocation wheel:

✓ attractive design

✓

✓ rotating on spot

LIV SYSTEMS furniture wheel + solid polypropylene wheel Ø100 x W25mm for 80kg Prod ID: 33653

ID 33653:furniture Wheel with plain bearing and solid polypropylene wheel with hardness 60 ± 5 ° Shore D | Axle hole: 6 mm | Hub length: 27,5 mm | Essential relocation, visually attractive design, economical, easy rotating on spot

Product information

- Article code 2-843
- SKU 33653
- EAN 3838461336539



Product description

furniture Swivel castor with brake with an overall height of 120 mm

Wheel diameter x width: 100 x 25 mm

Top plate with 4 mounting holes of 6,5 mm, mounting hole distance 46x46 mm and top plate outer dimensions: 60x60 mm

Wheel with plain bearing and rubber tyre with hardness 83 ° Shore A on polypropylene
the double brake system, brakes the turning of the wheel and the swivel rotation.

Approved and tested load capacity

Dynamic 60 kg

Static 70 kg

Temperature range:

Continuous operation: -20 | +70°C

Short (10 min) exposure: -30 | +80°C

Advantages of this Silent move Swivel castor with brake:

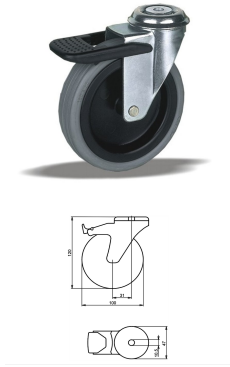
- ✓ friendly
- ✓ non intrusive
- ✓ base

LIV SYSTEMS furniture Swivel castor with brake + rubber tyre Ø100 x W25mm for 60kg Prod ID: 39134

ID 39134: Castor overall height 120 mm | 4 mounting holes with distance 46x46 mm | Wheel with plain bearing and rubber tyre with hardness 83 ° Shore A | The double brake system, brakes the turning of the wheel and the swivel rotation. | Silent move, surfa

Product information

- Article code 2-821 E1
- SKU 39134
- EAN 3838461391347



Product description

furniture Swivel castor with brake with an overall height of 120 mm

Wheel diameter x width: 100 x 25 mm

Top plate with 4 mounting holes of 10,5 mm, mounting hole distance #\$\$ mm and top plate outer dimensions: 47 mm

Wheel with plain bearing and rubber tyre with hardness 83 ° Shore A on polypropylene.

Approved and tested load capacity

Dynamic 60 kg

Static 70 kg

Temperature range:

Continuous operation: -20 | +70°C

Short (10 min) exposure: -30 | +80°C

Advantages of this Silent move Swivel castor with brake:

- ✓ friendly
- ✓ non intrusive
- ✓ base

LIV SYSTEMS furniture Swivel castor with brake + rubber tyre Ø100 x W25mm for 60kg Prod ID: 39193

ID 39193: Castor overall height 120 mm | 4 mounting holes with distance #\$\$ mm | Wheel with plain bearing and rubber tyre with hardness 83 ° Shore A | Silent move, surface friendly, visually non intrusive, lightweight base

Product information

- Article code 2-822 B10
- SKU 39193
- EAN 3838461391934

Specifications

The result of our quality is maximum performance!



Product description

furniture Swivel castor with brake with an overall height of 120 mm

Wheel diameter x width: 100 x 25 mm

Top plate with 4 mounting holes of 6,5 mm, mounting hole distance 46x46 mm and top plate outer dimensions: 60x60 mm

Wheel with plain bearing and rubber tyre with hardness 83 ° Shore A on polypropylene.

Approved and tested load capacity

Dynamic 60 kg

Static 70 kg

Temperature range:

Continuous operation: -20 | +70°C

Short (10 min) exposure: -30 | +80°C

Advantages of this Silent move Swivel castor with brake:

- ✓ friendly
- ✓ non intrusive
- ✓ base

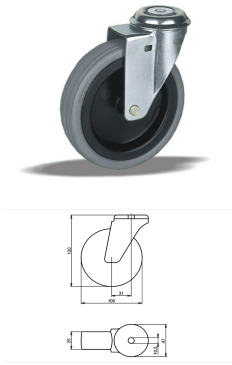
LIV SYSTEMS furniture Swivel castor with brake + rubber tyre Ø100 x W25mm for 60kg Prod ID: 32314

ID 32314: Castor overall height 120 mm | 4 mounting holes with distance 46x46 mm | Wheel with plain bearing and rubber tyre with hardness 83 ° Shore A | Silent move, surface friendly, visually non intrusive, lightweight base

Product information

- Article code 2-821 B
- SKU 32314
- EAN 3838461323140

Specifications



Product description

furniture Swivel castor with an overall height of 120 mm

Wheel diameter x width: 100 x 25 mm

Top plate with 4 mounting holes of 10,5 mm, mounting hole distance #\$\$ mm and top plate outer dimensions: 47 mm

Wheel with plain bearing and rubber tyre with hardness 83 ° Shore A on polypropylene.

Approved and tested load capacity

Dynamic 60 kg

Static 70 kg

Temperature range:

Continious operation: -20 | +70°C

Short (10 min) exposure: -30 | +80°C

Advantages of this Silent move Swivel castor:

- ✓ friendly
- ✓ non intrusive
- ✓ base

LIV SYSTEMS furniture Swivel castor + rubber tyre Ø100 x W25mm for 60kg Prod ID: 39184

ID 39184: Castor overall height 120 mm | 4 mounting holes with distance #\$\$ mm | Wheel with plain bearing and rubber tyre with hardness 83 ° Shore A | Silent move, surface friendly, visually non intrusive, lightweight base

Product information

- Article code 2-822 A10
- SKU 39184
- EAN 3838461391842

Specifications

The result of our quality is maximum performance!



Product description

furniture Swivel castor with an overall height of 120 mm

Wheel diameter x width: 100 x 25 mm

Top plate with 4 mounting holes of 6,5 mm, mounting hole distance 46x46 mm and top plate outer dimensions: 60x60 mm

Wheel with plain bearing and rubber tyre with hardness 83 ° Shore A on polypropylene.

Approved and tested load capacity

Dynamic 60 kg

Static 70 kg

Temperature range:

Continuous operation: -20 | +70°C

Short (10 min) exposure: -30 | +80°C

Advantages of this Silent move Swivel castor:

- ✓ friendly
- ✓ non intrusive
- ✓ base

LIV SYSTEMS furniture Swivel castor + rubber tyre Ø100 x W25mm for 60kg

Prod ID: 32313

ID 32313: Castor overall height 120 mm | 4 mounting holes with distance 46x46 mm | Wheel with plain bearing and rubber tyre with hardness 83 ° Shore A | Silent move, surface friendly, visually non intrusive, lightweight base

Product information

- Article code 2-821 A
- SKU 32313
- EAN 3838461323133

Specifications



Product description

furniture Wheel with plain bearing and rubber tyre with hardness 83 ° Shore A on polypropylene

Wheel diameter x width: 100 x 25 mm

Axle hole: 6 mm

Hub length: 27,5 mm

Approved and tested load capacity

Dynamic 60 kg

Static 70 kg

Temperature range:

Continuous operation: -20 | +70°C

Short (10 min) exposure: -30 | +80°C

Advantages of this Silent move wheel:

- ✓ friendly
- ✓ non intrusive
- ✓ base

LIV SYSTEMS furniture wheel + rubber tyre Ø100 x W25mm for 60kg Prod ID: 32324

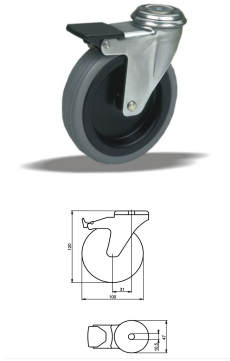
ID 32324:furniture Wheel with plain bearing and rubber tyre with hardness 83 ° Shore A on polypropylene | Axle hole: 6 mm | Hub length: 27,5 mm | Silent move, surface friendly, visually non intrusive, lightweight base

Product information

- Article code 2-820
- SKU 32324
- EAN 3838461323249

Specifications

The result of our quality is maximum performance!



Product description

furniture Swivel castor with brake with an overall height of 120 mm

Wheel diameter x width: 100 x 25 mm

Top plate with 4 mounting holes of 10,5 mm, mounting hole distance #\$\$ mm and top plate outer dimensions: 47 mm

Wheel with plain bearing and polyethylene tread with hardness 92 ° Shore A on polypropylene

the double brake system, brakes the turning of the wheel and the swivel rotation.

Approved and tested load capacity

Dynamic 80 kg

Static 100 kg

Temperature range:

Continuous operation: -20 | +60°C

Short (10 min) exposure: -30 | +80°C

Advantages of this Invisible foundation Swivel castor with brake:

- ✓ deformation if rarely moved
- ✓ markings on the floor
- ✓ to turn

LIV SYSTEMS furniture Swivel castor with brake + polyethylene tread Ø100 x W25mm for 80kg Prod ID: 38725

ID 38725: Castor overall height 120 mm | 4 mounting holes with distance #\$\$ mm | Wheel with plain bearing and polyethylene tread with hardness 92 ° Shore A | The double brake system, brakes the turning of the wheel and the swivel rotation. | Invisible fou

Product information

- Article code 2-848 U1
- SKU 38725
- EAN 3838461387258

Specifications

The result of our quality is maximum performance!



Product description

furniture Swivel castor with brake with an overall height of 120 mm

Wheel diameter x width: 100 x 25 mm

Top plate with 4 mounting holes of 6,5 mm, mounting hole distance 46x46 mm and top plate outer dimensions: 60x60 mm

Wheel with plain bearing and polyethylene tread with hardness 92 ° Shore A on polypropylene the double brake system, brakes the turning of the wheel and the swivel rotation.

Approved and tested load capacity

Dynamic 80 kg

Static 100 kg

Temperature range:

Continuous operation: -20 | +60°C

Short (10 min) exposure: -30 | +80°C

Advantages of this Invisible foundation Swivel castor with brake:

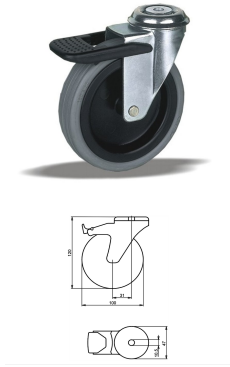
- ✓ deformation if rarely moved
- ✓ markings on the floor
- ✓ to turn

LIV SYSTEMS furniture Swivel castor with brake + polyethylene tread Ø100 x W25mm for 80kg Prod ID: 38714

ID 38714: Castor overall height 120 mm | 4 mounting holes with distance 46x46 mm | Wheel with plain bearing and polyethylene tread with hardness 92 ° Shore A | The double brake system, brakes the turning of the wheel and the swivel rotation. | Invisible f

Product information

- Article code 2-848 S1
- SKU 38714
- EAN 3838461387142



Product description

furniture Swivel castor with brake with an overall height of 120 mm

Wheel diameter x width: 100 x 25 mm

Top plate with 4 mounting holes of 10,5 mm, mounting hole distance #\$\$ mm and top plate outer dimensions: 47 mm

Wheel with plain bearing and polyethylene tread with hardness 92 ° Shore A on polypropylene.

Approved and tested load capacity

Dynamic 80 kg

Static 100 kg

Temperature range:

Continuous operation: -20 | +60°C

Short (10 min) exposure: -30 | +80°C

Advantages of this Invisible foundation Swivel castor with brake:

- ✓ deformation if rarely moved
- ✓ markings on the floor
- ✓ to turn

LIV SYSTEMS furniture Swivel castor with brake + polyethylene tread Ø100 x W25mm for 80kg Prod ID: 39194

ID 39194: Castor overall height 120 mm | 4 mounting holes with distance #\$\$ mm | Wheel with plain bearing and polyethylene tread with hardness 92 ° Shore A | Invisible foundation, low deformation if rarely moved, no markings on the floor, easy to turn

Product information

- Article code 2-822 D10
- SKU 39194
- EAN 3838461391941

Specifications

The result of our quality is maximum performance!



Product description

furniture Swivel castor with brake with an overall height of 120 mm

Wheel diameter x width: 100 x 25 mm

Top plate with 4 mounting holes of 6,5 mm, mounting hole distance 46x46 mm and top plate outer dimensions: 60x60 mm

Wheel with plain bearing and polyethylene tread with hardness 92 ° Shore A on polypropylene.

Approved and tested load capacity

Dynamic 80 kg

Static 100 kg

Temperature range:

Continuous operation: -20 | +60°C

Short (10 min) exposure: -30 | +80°C

Advantages of this Invisible foundation Swivel castor with brake:

- ✓ deformation if rarely moved
- ✓ markings on the floor
- ✓ to turn

LIV SYSTEMS furniture Swivel castor with brake + polyethylene tread Ø100 x W25mm for 80kg Prod ID: 32325

ID 32325: Castor overall height 120 mm | 4 mounting holes with distance 46x46 mm | Wheel with plain bearing and polyethylene tread with hardness 92 ° Shore A | Invisible foundation, low deformation if rarely moved, no markings on the floor, easy to turn

Product information

- Article code 2-821 D
- SKU 32325
- EAN 3838461323256



Product description

furniture Swivel castor with an overall height of 120 mm

Wheel diameter x width: 100 x 25 mm

Top plate with 4 mounting holes of 6,5 mm, mounting hole distance 46x46 mm and top plate outer dimensions: 60x60 mm

Wheel with plain bearing and polyethylene tread with hardness 92 ° Shore A on polypropylene.

Approved and tested load capacity

Dynamic 80 kg

Static 100 kg

Temperature range:

Continuous operation: -20 | +60°C

Short (10 min) exposure: -30 | +80°C

Advantages of this Invisible foundation Swivel castor:

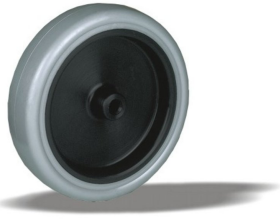
- ✓ deformation if rarely moved
- ✓ markings on the floor
- ✓ to turn

LIV SYSTEMS furniture Swivel castor + polyethylene tread Ø100 x W25mm for 80kg Prod ID: 33945

ID 33945: Castor overall height 120 mm | 4 mounting holes with distance 46x46 mm | Wheel with plain bearing and polyethylene tread with hardness 92 ° Shore A | Invisible foundation, low deformation if rarely moved, no markings on the floor, easy to turn

Product information

- Article code 2-840 S
- SKU 33945
- EAN 3838461339455



Product description

furniture Wheel with plain bearing and thermoplastic rubber with hardness 92 ° Shore A on polypropylene

Wheel diameter x width: 100 x 25 mm

Axle hole: 6 mm

Hub length: 27,5 mm

Approved and tested load capacity

Dynamic 80 kg

Static 100 kg

Temperature range:

Continuous operation: -20 | +60°C

Short (10 min) exposure: -30 | +80°C

Advantages of this Invisible foundation wheel:

- ✓ deformation if rarely moved
- ✓ markings on the floor
- ✓ to turn

LIV SYSTEMS furniture wheel + thermoplastic rubber Ø100 x W25mm for 80kg Prod ID: 33834

ID 33834: furniture Wheel with plain bearing and thermoplastic rubber with hardness 92 ° Shore A on polypropylene | Axle hole: 6 mm | Hub length: 27,5 mm | Invisible foundation, low deformation if rarely moved, no markings on the floor, easy to turn

Product information

- Article code 2-820 C
- SKU 33834
- EAN 3838461338342

Алматы (7273)495-231
Ангарск (3955)60-70-56
Архангельск (8182)63-90-72
Астрахань (8512)99-46-04
Барнаул (3852)73-04-60
Белгород (4722)40-23-64
Благовещенск (4162)22-76-07
Брянск (4832)59-03-52
Владивосток (423)249-28-31
Владикавказ (8672)28-90-48
Владимир (4922)49-43-18
Волгоград (844)278-03-48
Вологда (8172)26-41-59
Воронеж (473)204-51-73
Екатеринбург (343)384-55-89

Иваново (4932)77-34-06
Ижевск (3412)26-03-58
Иркутск (395)279-98-46
Казань (843)206-01-48
Калининград (4012)72-03-81
Калуга (4842)92-23-67
Кемерово (3842)65-04-62
Киров (8332)68-02-04
Коломна (4966)23-41-49
Кострома (4942)77-07-48
Краснодар (861)203-40-90
Красноярск (391)204-63-61
Курск (4712)77-13-04
Курган (3522)50-90-47
Липецк (4742)52-20-81

Магнитогорск (3519)55-03-13
Москва (495)268-04-70
Мурманск (8152)59-64-93
Набережные Челны (8552)20-53-41
Нижний Новгород (831)429-08-12
Новокузнецк (3843)20-46-81
Ноябрьск (3496)41-32-12
Новосибирск (383)227-86-73
Омск (3812)21-46-40
Орел (4862)44-53-42
Оренбург (3532)37-68-04
Пенза (8412)22-31-16
Петрозаводск (8142)55-98-37
Псков (8112)59-10-37
Пермь (342)205-81-47

Ростов-на-Дону (863)308-18-15
Рязань (4912)46-61-64
Самара (846)206-03-16
Санкт-Петербург (812)309-46-40
Саратов (845)249-38-78
Севастополь (8692)22-31-93
Саранск (8342)22-96-24
Симферополь (3652)67-13-56
Смоленск (4812)29-41-54
Сочи (862)225-72-31
Ставрополь (8652)20-65-13
Сургут (3462)77-98-35
Сыктывкар (8212)25-95-17
Тамбов (4752)50-40-97
Тверь (4822)63-31-35

Тольятти (8482)63-91-07
Томск (3822)98-41-53
Тула (4872)33-79-87
Тюмень (3452)66-21-18
Ульяновск (8422)24-23-59
Улан-Удэ (3012)59-97-51
Уфа (347)229-48-12
Хабаровск (4212)92-98-04
Чебоксары (8352)28-53-07
Челябинск (351)202-03-61
Череповец (8202)49-02-64
Чита (3022)38-34-83
Якутск (4112)23-90-97
Ярославль (4852)69-52-93

Россия +7(495)268-04-70

Казахстан +7(7172)727-132

Киргизия +996(312)96-26-47

<https://liv.nt-rt.ru/> || vis@nt-rt.ru