

Алматы (7273)495-231  
Ангарск (3955)60-70-56  
Архангельск (8182)63-90-72  
Астрахань (8512)99-46-04  
Барнаул (3852)73-04-60  
Белгород (4722)40-23-64  
Благовещенск (4162)22-76-07  
Брянск (4832)59-03-52  
Владивосток (423)249-28-31  
Владикавказ (8672)28-90-48  
Владимир (4922)49-43-18  
Волгоград (844)278-03-48  
Вологда (8172)26-41-59  
Воронеж (473)204-51-73  
Екатеринбург (343)384-55-89

Иваново (4932)77-34-06  
Ижевск (3412)26-03-58  
Иркутск (395)279-98-46  
Казань (843)206-01-48  
Калининград (4012)72-03-81  
Калуга (4842)92-23-67  
Кемерово (3842)65-04-62  
Киров (8332)68-02-04  
Коломна (4966)23-41-49  
Кострома (4942)77-07-48  
Краснодар (861)203-40-90  
Красноярск (391)204-63-61  
Курск (4712)77-13-04  
Курган (3522)50-90-47  
Липецк (4742)52-20-81

Магнитогорск (3519)55-03-13  
Москва (495)268-04-70  
Мурманск (8152)59-64-93  
Набережные Челны (8552)20-53-41  
Нижний Новгород (831)429-08-12  
Новокузнецк (3843)20-46-81  
Ноябрьск (3496)41-32-12  
Новосибирск (383)227-86-73  
Омск (3812)21-46-40  
Орел (4862)44-53-42  
Оренбург (3532)37-68-04  
Пенза (8412)22-31-16  
Петрозаводск (8142)55-98-37  
Псков (8112)59-10-37  
Пермь (342)205-81-47

Ростов-на-Дону (863)308-18-15  
Рязань (4912)46-61-64  
Самара (846)206-03-16  
Санкт-Петербург (812)309-46-40  
Саратов (845)249-38-78  
Севастополь (8692)22-31-93  
Саранск (8342)22-96-24  
Симферополь (3652)67-13-56  
Смоленск (4812)29-41-54  
Сочи (862)225-72-31  
Ставрополь (8652)20-65-13  
Сургут (3462)77-98-35  
Сыктывкар (8212)25-95-17  
Тамбов (4752)50-40-97  
Тверь (4822)63-31-35

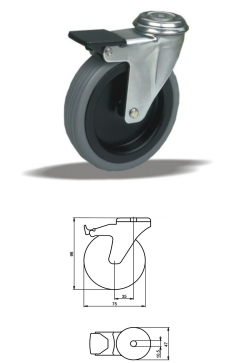
Тольятти (8482)63-91-07  
Томск (3822)98-41-53  
Тула (4872)33-79-87  
Тюмень (3452)66-21-18  
Ульяновск (8422)24-23-59  
Улан-Удэ (3012)59-97-51  
Уфа (347)229-48-12  
Хабаровск (4212)92-98-04  
Чебоксары (8352)28-53-07  
Челябинск (351)202-03-61  
Череповец (8202)49-02-64  
Чита (3022)38-34-83  
Якутск (4112)23-90-97  
Ярославль (4852)69-52-93

Россия +7(495)268-04-70

Казахстан +7(7172)727-132

Киргизия +996(312)96-26-47

<https://liv.nt-rt.ru/> || [vis@nt-rt.ru](mailto:vis@nt-rt.ru)



## Product description

furniture Swivel castor with brake with an overall height of 96 mm

Wheel diameter x width: 75 x 25 mm

Top plate with 4 mounting holes of 10,5 mm, mounting hole distance #5% mm and top plate outer dimensions: 47 mm

Wheel with plain bearing and polyethylene tread with hardness 92 ° Shore A on polypropylene

the double brake system, brakes the turning of the wheel and the swivel rotation.

### Approved and tested load capacity

Dynamic 75 kg

Static 90 kg

### Temperature range:

Continuous operation: -20 | +60°C

Short (10 min) exposure: -30 | +80°C

### Advantages of this Invisible foundation Swivel castor with brake:

- ✓ deformation if rarely moved
- ✓ markings on the floor
- ✓ to turn

## LIV SYSTEMS furniture Swivel castor with brake + polyethylene tread Ø75 x W25mm for 75kg Prod ID: 38705

ID 38705: Castor overall height 96 mm | 4 mounting holes with distance #5% mm | Wheel with plain bearing and polyethylene tread with hardness 92 ° Shore A | The double brake system, brakes the turning of the wheel and the swivel rotation. | Invisible four

## Product information

- Article code 2-847 U1
- SKU 38705
- EAN 3838461387050

## Specifications

The result of our quality is maximum performance!



## Product description

furniture Swivel castor with an overall height of 96 mm

Wheel diameter x width: 75 x 25 mm

Top plate with 4 mounting holes of 6,5 mm, mounting hole distance 46x46 mm and top plate outer dimensions: 60x60 mm

Wheel with plain bearing and solid polypropylene wheel with hardness  $60\pm 5$  ° Shore D.

### Approved and tested load capacity

Dynamic 75 kg

Static 90 kg

### Temperature range:

Continuous operation:  $-20$  |  $+60$  °C

Short (10 min) exposure: / °C

### Advantages of this Essential relocation Swivel castor:

✓ attractive design

✓

✓ rotating on spot

## LIV SYSTEMS furniture Swivel castor + solid polypropylene wheel Ø75 x W25mm for 75kg Prod ID: 34954

ID 34954: Castor overall height 96 mm | 4 mounting holes with distance 46x46 mm | Wheel with plain bearing and solid polypropylene wheel with hardness  $60\pm 5$  ° Shore D | Essential relocation, visually attractive design, economical, easy rotating on spot

## Product information

- Article code 2-809 A
- SKU 34954
- EAN 3838461349546



## Product description

furniture Swivel castor with an overall height of 96 mm

Wheel diameter x width: 75 x 25 mm

Top plate with 4 mounting holes of 6,5 mm, mounting hole distance 46x46 mm and top plate outer dimensions: 60x60 mm

Wheel with plain bearing and thermoplastic rubber with hardness 92 ° Shore A on polypropylene.

### Approved and tested load capacity

Dynamic 75 kg

Static 90 kg

### Temperature range:

Continuous operation: -20 | +60°C

Short (10 min) exposure: -30 | +80°C

### Advantages of this Invisible foundation Swivel castor:

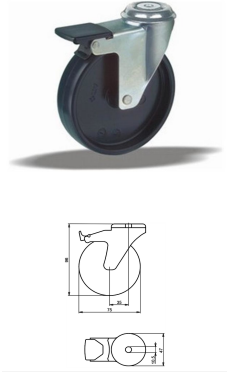
- ✓ deformation if rarely moved
- ✓ markings on the floor
- ✓ to turn

## LIV SYSTEMS furniture Swivel castor + thermoplastic rubber Ø75 x W25mm for 75kg Prod ID: 33475

ID 33475: Castor overall height 96 mm | 4 mounting holes with distance 46x46 mm | Wheel with plain bearing and thermoplastic rubber with hardness 92 ° Shore A | Invisible foundation, low deformation if rarely moved, no markings on the floor, easy to turn

## Product information

- Article code 2-824
- SKU 33475
- EAN 3838461334757



## Product description

Furniture Swivel castor with brake with an overall height of 96 mm.

Wheel diameter x width: 75 x 25 mm.

Top plate with 4 mounting holes of 10,5 mm, mounting hole distance 47 mm and top plate outer dimensions: 47 mm.

Wheel with plain bearing and solid polypropylene wheel with hardness  $60\pm 5$  ° Shore D

the double brake system, brakes the turning of the wheel and the swivel rotation.

### Approved and tested load capacity:

Dynamic: 75 kg

Static: 90 kg

### Temperature range:

Continuous operation:  $-20$  |  $+60$  °C

Short (10 min) exposure: / °C

### Advantages of this Swivel castor with brake:

✓ attractive design

✓ rotating on spot

## LIV SYSTEMS furniture Swivel castor with brake + solid polypropylene wheel Ø75 x W25mm for 75kg Prod ID: 40743

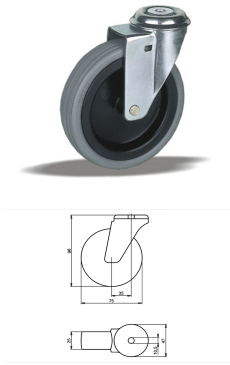
ID 40743: Castor overall height 96 mm | 4 mounting holes with distance 47 mm | Wheel with plain bearing and solid polypropylene wheel with hardness  $60\pm 5$  ° Shore D | The double brake system, brakes the turning of the wheel and the swivel rotation. | Esse

## Product information

- Article code 2-847 B10
- SKU 40743
- EAN 3838461407437

## Specifications

The result of our quality is maximum performance!



## Product description

furniture Swivel castor with an overall height of 96 mm

Wheel diameter x width: 75 x 25 mm

Top plate with 4 mounting holes of 10,5 mm, mounting hole distance 47 mm and top plate outer dimensions: 47 mm

Wheel with plain bearing and polyethylene tread with hardness 92 ° Shore A on polypropylene.

### Approved and tested load capacity

Dynamic 75 kg

Static 90 kg

### Temperature range:

Continuous operation: -20 | +60°C

Short (10 min) exposure: -30 | +80°C

### Advantages of this Invisible foundation Swivel castor:

- ✓ deformation if rarely moved
- ✓ markings on the floor
- ✓ to turn

## LIV SYSTEMS furniture Swivel castor + polyethylene tread Ø75 x W25mm for 75kg Prod ID: 39174

ID 39174: Castor overall height 96 mm | 4 mounting holes with distance 47 mm | Wheel with plain bearing and polyethylene tread with hardness 92 ° Shore A | Invisible foundation, low deformation if rarely moved, no markings on the floor, easy to turn

## Product information

- Article code 2-825 010
- SKU 39174
- EAN 3838461391743

## Specifications

The result of our quality is maximum performance!



## Product description

Furniture Swivel castor with brake with an overall height of 96 mm.

Wheel diameter x width: 75 x 25 mm.

Top plate with 4 mounting holes of 6,5 mm, mounting hole distance 46 x 46 mm and top plate outer dimensions: 60 x 60 mm.

Wheel with plain bearing and solid polypropylene wheel with hardness  $60\pm 5$  ° Shore D  
the double brake system, brakes the turning of the wheel and the swivel rotation.

### Approved and tested load capacity:

Dynamic: 75 kg

Static: 90 kg

### Temperature range:

Continuous operation:  $-20$  |  $+60$  °C

Short (10 min) exposure: /°C

### Advantages of Swivel castor with brake:

- ✓ attractive design
- ✓ rotating on spot

## LIV SYSTEMS furniture Swivel castor with brake + solid polypropylene wheel Ø75 x W25mm for 75kg Prod ID: 35113

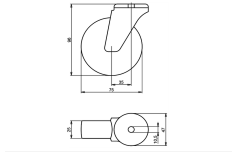
ID 35113: Castor overall height 96 mm | 4 mounting holes with distance 46x46 mm | Wheel with plain bearing and solid polypropylene wheel with hardness  $60\pm 5$  ° Shore D | The double brake system, brakes the turning of the wheel and the swivel rotation. | Es

## Product information

- Article code 2-847 A1
- SKU 35113
- EAN 3838461351136

## Specifications

The result of our quality is maximum performance!



## Product description

furniture Swivel castor with an overall height of 96 mm

Wheel diameter x width: 75 x 25 mm

Top plate with 4 mounting holes of 10,5 mm, mounting hole distance #50 mm and top plate outer dimensions: 47 mm

Wheel with plain bearing and solid polypropylene wheel with hardness  $60\pm 5$  ° Shore D.

### Approved and tested load capacity

Dynamic 75 kg

Static 90 kg

### Temperature range:

Continuous operation:  $-20$  |  $+60$  °C

Short (10 min) exposure:  $l$  °C

### Advantages of this Essential relocation Swivel castor:

- ✓ attractive design
- ✓
- ✓ rotating on spot

## LIV SYSTEMS furniture Swivel castor + solid polypropylene wheel Ø75 x W25mm for 75kg Prod ID: 40734

ID 40734: Castor overall height 96 mm | 4 mounting holes with distance #50 mm | Wheel with plain bearing and solid polypropylene wheel with hardness  $60\pm 5$  ° Shore D | Essential relocation, visually attractive design, economical, easy rotating on spot

## Product information

- Article code 2-809 B10
- SKU 40734
- EAN 3838461407345

## Specifications

The result of our quality is maximum performance!



## Product description

furniture Wheel with plain bearing and solid polypropylene wheel with hardness  $60\pm 5$  ° Shore D

Wheel diameter x width: 75 x 25 mm

Axle hole: 6 mm

Hub length: 27,5 mm

### Approved and tested load capacity

Dynamic 75 kg

Static 90 kg

### Temperature range:

Continuous operation: -20 | +60°C

Short (10 min) exposure: /°C

### Advantages of this Essential relocation wheel:

✓ attractive design

✓

✓ rotating on spot

## LIV SYSTEMS furniture wheel + solid polypropylene wheel Ø75 x W25mm for 75kg Prod ID: 33954

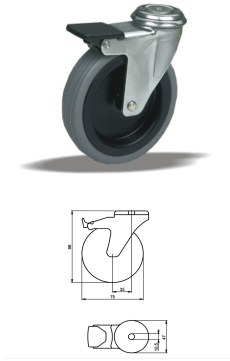
ID 33954: furniture Wheel with plain bearing and solid polypropylene wheel with hardness  $60\pm 5$  ° Shore D | Axle hole: 6 mm | Hub length: 27,5 mm | Essential relocation, visually attractive design, economical, easy rotating on spot

## Product information

- Article code 2-833
- SKU 33954
- EAN 3838461339547

## Specifications





## Product description

furniture Swivel castor with brake with an overall height of 96 mm

Wheel diameter x width: 75 x 25 mm

Top plate with 4 mounting holes of 10,5 mm, mounting hole distance #50 mm and top plate outer dimensions: 47 mm

Wheel with plain bearing and rubber tyre with hardness 83 ° Shore A on polypropylene

the double brake system, brakes the turning of the wheel and the swivel rotation.

### Approved and tested load capacity

Dynamic 50 kg

Static 60 kg

### Temperature range:

Continuous operation: -20 | +70°C

Short (10 min) exposure: -30 | +80°C

### Advantages of this Silent move Swivel castor with brake:

- ✓ friendly
- ✓ non intrusive
- ✓ base

## LIV SYSTEMS furniture Swivel castor with brake + rubber tyre Ø75 x W25mm for 50kg Prod ID: 39064

ID 39064: Castor overall height 96 mm | 4 mounting holes with distance #50 mm | Wheel with plain bearing and rubber tyre with hardness 83 ° Shore A | The double brake system, brakes the turning of the wheel and the swivel rotation. | Silent move, surface

## Product information

- Article code 2-847 11
- SKU 39064
- EAN 3838461390647

## Specifications

The result of our quality is maximum performance!



## Product description

furniture Swivel castor with brake with an overall height of 96 mm

Wheel diameter x width: 75 x 25 mm

Top plate with 4 mounting holes of 6,5 mm, mounting hole distance 46x46 mm and top plate outer dimensions: 60x60 mm

Wheel with plain bearing and rubber tyre with hardness 83 ° Shore A on polypropylene  
the double brake system, brakes the turning of the wheel and the swivel rotation.

### Approved and tested load capacity

Dynamic 50 kg

Static 60 kg

### Temperature range:

Continuous operation: -20 | +70°C

Short (10 min) exposure: -30 | +80°C

### Advantages of this Silent move Swivel castor with brake:

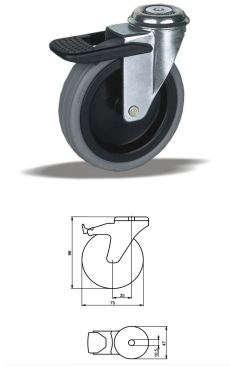
- ✓ friendly
- ✓ non intrusive
- ✓ base

## LIV SYSTEMS furniture Swivel castor with brake + rubber tyre Ø75 x W25mm for 50kg Prod ID: 39055

ID 39055: Castor overall height 96 mm | 4 mounting holes with distance 46x46 mm | Wheel with plain bearing and rubber tyre with hardness 83 ° Shore A | The double brake system, brakes the turning of the wheel and the swivel rotation. | Silent move, surfac

## Product information

- Article code 2-847 G1
- SKU 39055
- EAN 3838461390555



## Product description

furniture Swivel castor with brake with an overall height of 96 mm

Wheel diameter x width: 75 x 25 mm

Top plate with 4 mounting holes of 10,5 mm, mounting hole distance #50 mm and top plate outer dimensions: 47 mm

Wheel with plain bearing and rubber tyre with hardness 83 ° Shore A on polypropylene.

### Approved and tested load capacity

Dynamic 50 kg

Static 60 kg

### Temperature range:

Continuous operation: -20 | +70°C

Short (10 min) exposure: -30 | +80°C

### Advantages of this Silent move Swivel castor with brake:

- ✓ friendly
- ✓ non intrusive
- ✓ base

## LIV SYSTEMS furniture Swivel castor with brake + rubber tyre Ø75 x W25mm for 50kg Prod ID: 39175

ID 39175: Castor overall height 96 mm | 4 mounting holes with distance #50 mm | Wheel with plain bearing and rubber tyre with hardness 83 ° Shore A | Silent move, surface friendly, visually non intrusive, lightweight base

## Product information

- Article code 2-811 010
- SKU 39175
- EAN 3838461391750

## Specifications

The result of our quality is maximum performance!

## Product description

furniture Swivel castor with brake with an overall height of 96 mm

Wheel diameter x width: 75 x 25 mm

Top plate with 4 mounting holes of 6,5 mm, mounting hole distance 46x46 mm and top plate outer dimensions: 60x60 mm

Wheel with plain bearing and rubber tyre with hardness 83 ° Shore A on polypropylene.

### Approved and tested load capacity

Dynamic 50 kg

Static 60 kg

### Temperature range:

Continuous operation: -20 | +70°C

Short (10 min) exposure: -30 | +80°C

### Advantages of this Silent move Swivel castor with brake:

- ✓ friendly
- ✓ non intrusive
- ✓ base

## LIV SYSTEMS furniture Swivel castor with brake + rubber tyre Ø75 x W25mm for 50kg Prod ID: 91867

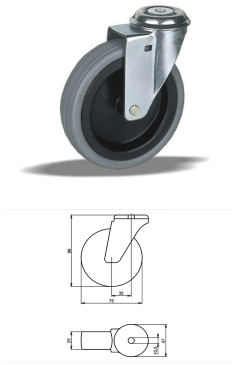
ID 91867: Castor overall height 96 mm | 4 mounting holes with distance 46x46 mm | Wheel with plain bearing and rubber tyre with hardness 83 ° Shore A | Silent move, surface friendly, visually non intrusive, lightweight base

## Product information

- Article code 2-811 C
- SKU 91867
- EAN 3838461918674

## Specifications

The result of our quality is maximum performance!



## Product description

furniture Swivel castor with an overall height of 96 mm

Wheel diameter x width: 75 x 25 mm

Top plate with 4 mounting holes of 10,5 mm, mounting hole distance #50 mm and top plate outer dimensions: 47 mm

Wheel with plain bearing and rubber tyre with hardness 83 ° Shore A on polypropylene.

### Approved and tested load capacity

Dynamic 50 kg

Static 60 kg

### Temperature range:

Continuous operation: -20 | +70°C

Short (10 min) exposure: -30 | +80°C

### Advantages of this Silent move Swivel castor:

- ✓ friendly
- ✓ non intrusive
- ✓ base

## LIV SYSTEMS furniture Swivel castor + rubber tyre Ø75 x W25mm for 50kg Prod ID: 39173

ID 39173: Castor overall height 96 mm | 4 mounting holes with distance #50 mm | Wheel with plain bearing and rubber tyre with hardness 83 ° Shore A | Silent move, surface friendly, visually non intrusive, lightweight base

## Product information

- Article code 2-811 A10
- SKU 39173
- EAN 3838461391736

## Specifications

The result of our quality is maximum performance!



## Product description

furniture Swivel castor with an overall height of 96 mm

Wheel diameter x width: 75 x 25 mm

Top plate with 4 mounting holes of 6,5 mm, mounting hole distance 46x46 mm and top plate outer dimensions: 60x60 mm

Wheel with plain bearing and rubber tyre with hardness 83 ° Shore A on polypropylene.

### Approved and tested load capacity

Dynamic 50 kg

Static 60 kg

### Temperature range:

Continuous operation: -20 | +70°C

Short (10 min) exposure: -30 | +80°C

### Advantages of this Silent move Swivel castor:

- ✓ friendly
- ✓ non intrusive
- ✓ base

## LIV SYSTEMS furniture Swivel castor + rubber tyre Ø75 x W25mm for 50kg

### Prod ID: 91866

ID 91866: Castor overall height 96 mm | 4 mounting holes with distance 46x46 mm | Wheel with plain bearing and rubber tyre with hardness 83 ° Shore A | Silent move, surface friendly, visually non intrusive, lightweight base

## Product information

- Article code 2-811 B
- SKU 91866
- EAN 3838461918667

## Specifications



## Product description

furniture Wheel with plain bearing and rubber tyre with hardness 83 ° Shore A on polypropylene

Wheel diameter x width: 75 x 25 mm

Axle hole: 6 mm

Hub length: 27,5 mm

### Approved and tested load capacity

Dynamic 50 kg

Static 60 kg

### Temperature range:

Continuous operation: -20 | +70°C

Short (10 min) exposure: -30 | +80°C

### Advantages of this Silent move wheel:

- ✓ friendly
- ✓ non intrusive
- ✓ base

## LIV SYSTEMS furniture wheel + rubber tyre Ø75 x W25mm for 50kg Prod ID: 91797

ID 91797:furniture Wheel with plain bearing and rubber tyre with hardness 83 ° Shore A on polypropylene | Axle hole: 6 mm | Hub length: 27,5 mm | Silent move, surface friendly, visually non intrusive, lightweight base

## Product information

- Article code 2-605 A
- SKU 91797
- EAN 3838461917974

## Specifications

The result of our quality is maximum performance!



## Product description

furniture Swivel castor with brake with an overall height of 96 mm

Wheel diameter x width: 75 x 25 mm

Top plate with 4 mounting holes of 6,5 mm, mounting hole distance 46x46 mm and top plate outer dimensions: 60x60 mm

Wheel with plain bearing and polyethylene tread with hardness 92 ° Shore A on polypropylene the double brake system, brakes the turning of the wheel and the swivel rotation.

### Approved and tested load capacity:

Dynamic: 75 kg

Static: 90 kg

### Temperature range:

Continuous operation: -20 | +60°C

Short (10 min) exposure: -30 | +80°C

### Advantages of this Invisible foundation Swivel castor with brake:

- ✓ deformation if rarely moved
- ✓ markings on the floor
- ✓ to turn

## LIV SYSTEMS furniture Swivel castor with brake + polyethylene tread Ø75 x W25mm for 75kg Prod ID: 38734

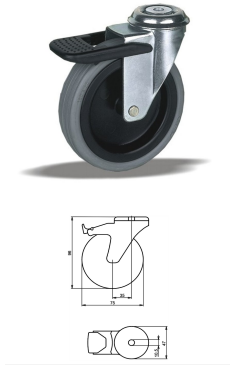
ID 38734: Castor overall height 96 mm | 4 mounting holes with distance 46x46 mm | Wheel with plain bearing and polyethylene tread with hardness 92 ° Shore A | The double brake system, brakes the turning of the wheel and the swivel rotation. | Invisible fo

## Product information

- Article code 2-847 S1
- SKU 38734
- EAN 3838461387340

## Specifications





## Product description

furniture Swivel castor with brake with an overall height of 96 mm

Wheel diameter x width: 75 x 25 mm

Top plate with 4 mounting holes of 10,5 mm, mounting hole distance #50 mm and top plate outer dimensions: 47 mm

Wheel with plain bearing and polyethylene tread with hardness 92 ° Shore A on polypropylene.

### Approved and tested load capacity

Dynamic 75 kg

Static 90 kg

### Temperature range:

Continuous operation: -20 | +60°C

Short (10 min) exposure: -30 | +80°C

### Advantages of this Invisible foundation Swivel castor with brake:

- ✓ deformation if rarely moved
- ✓ markings on the floor
- ✓ to turn

## LIV SYSTEMS furniture Swivel castor with brake + polyethylene tread Ø75 x W25mm for 75kg Prod ID: 39183

ID 39183: Castor overall height 96 mm | 4 mounting holes with distance #50 mm | Wheel with plain bearing and polyethylene tread with hardness 92 ° Shore A | Invisible foundation, low deformation if rarely moved, no markings on the floor, easy to turn

## Product information

- Article code 2-811 G10
- SKU 39183
- EAN 3838461391835

## Specifications

The result of our quality is maximum performance!



## Product description

furniture Swivel castor with brake with an overall height of 96 mm

Wheel diameter x width: 75 x 25 mm

Top plate with 4 mounting holes of 6,5 mm, mounting hole distance 46x46 mm and top plate outer dimensions: 60x60 mm

Wheel with plain bearing and polyethylene tread with hardness 92 ° Shore A on polypropylene.

### Approved and tested load capacity

Dynamic 75 kg

Static 90 kg

### Temperature range:

Continuous operation: -20 | +60°C

Short (10 min) exposure: -30 | +80°C

### Advantages of this Invisible foundation Swivel castor with brake:

- ✓ deformation if rarely moved
- ✓ markings on the floor
- ✓ to turn

## LIV SYSTEMS furniture Swivel castor with brake + polyethylene tread Ø75 x W25mm for 75kg Prod ID: 32333

ID 32333: Castor overall height 96 mm | 4 mounting holes with distance 46x46 mm | Wheel with plain bearing and polyethylene tread with hardness 92 ° Shore A | Invisible foundation, low deformation if rarely moved, no markings on the floor, easy to turn

## Product information

- Article code 2-811 F
- SKU 32333
- EAN 3838461323331



## Product description

furniture Wheel with plain bearing and thermoplastic rubber with hardness 92 ° Shore A on polypropylene

Wheel diameter x width: 75 x 25 mm

Axle hole: 6 mm

Hub length: 27,5 mm

### Approved and tested load capacity

Dynamic 75 kg

Static 90 kg

### Temperature range:

Continous operation: -20 | +60°C

Short (10 min) exposure: -30 | +80°C

### Advantages of this Invisible foundation wheel:

✓ deformation if rarely moved

✓ markings on the floor

✓ to turn

## LIV SYSTEMS furniture wheel + thermoplastic rubber Ø75 x W25mm for 75kg Prod ID: 33334

ID 33334:furniture Wheel with plain bearing and thermoplastic rubber with hardness 92 ° Shore A on polypropylene | Axle hole: 6 mm | Hub length: 27,5 mm | Invisible foundation, low deformation if rarely moved, no markings on the floor, easy to turn

## Product information

- Article code 2-605 C
- SKU 33334
- EAN 3838461333347

**Алматы** (7273)495-231  
**Ангарск** (3955)60-70-56  
**Архангельск** (8182)63-90-72  
**Астрахань** (8512)99-46-04  
**Барнаул** (3852)73-04-60  
**Белгород** (4722)40-23-64  
**Благовещенск** (4162)22-76-07  
**Брянск** (4832)59-03-52  
**Владивосток** (423)249-28-31  
**Владикавказ** (8672)28-90-48  
**Владимир** (4922)49-43-18  
**Волгоград** (844)278-03-48  
**Вологда** (8172)26-41-59  
**Воронеж** (473)204-51-73  
**Екатеринбург** (343)384-55-89

**Иваново** (4932)77-34-06  
**Ижевск** (3412)26-03-58  
**Иркутск** (395)279-98-46  
**Казань** (843)206-01-48  
**Калининград** (4012)72-03-81  
**Калуга** (4842)92-23-67  
**Кемерово** (3842)65-04-62  
**Киров** (8332)68-02-04  
**Коломна** (4966)23-41-49  
**Кострома** (4942)77-07-48  
**Краснодар** (861)203-40-90  
**Красноярск** (391)204-63-61  
**Курск** (4712)77-13-04  
**Курган** (3522)50-90-47  
**Липецк** (4742)52-20-81

**Магнитогорск** (3519)55-03-13  
**Москва** (495)268-04-70  
**Мурманск** (8152)59-64-93  
**Набережные Челны** (8552)20-53-41  
**Нижний Новгород** (831)429-08-12  
**Новокузнецк** (3843)20-46-81  
**Ноябрьск** (3496)41-32-12  
**Новосибирск** (383)227-86-73  
**Омск** (3812)21-46-40  
**Орел** (4862)44-53-42  
**Оренбург** (3532)37-68-04  
**Пенза** (8412)22-31-16  
**Петрозаводск** (8142)55-98-37  
**Псков** (8112)59-10-37  
**Пермь** (342)205-81-47

**Ростов-на-Дону** (863)308-18-15  
**Рязань** (4912)46-61-64  
**Самара** (846)206-03-16  
**Санкт-Петербург** (812)309-46-40  
**Саратов** (845)249-38-78  
**Севастополь** (8692)22-31-93  
**Саранск** (8342)22-96-24  
**Симферополь** (3652)67-13-56  
**Смоленск** (4812)29-41-54  
**Сочи** (862)225-72-31  
**Ставрополь** (8652)20-65-13  
**Сургут** (3462)77-98-35  
**Сыктывкар** (8212)25-95-17  
**Тамбов** (4752)50-40-97  
**Тверь** (4822)63-31-35

**Тольятти** (8482)63-91-07  
**Томск** (3822)98-41-53  
**Тула** (4872)33-79-87  
**Тюмень** (3452)66-21-18  
**Ульяновск** (8422)24-23-59  
**Улан-Удэ** (3012)59-97-51  
**Уфа** (347)229-48-12  
**Хабаровск** (4212)92-98-04  
**Чебоксары** (8352)28-53-07  
**Челябинск** (351)202-03-61  
**Череповец** (8202)49-02-64  
**Чита** (3022)38-34-83  
**Якутск** (4112)23-90-97  
**Ярославль** (4852)69-52-93

Россия +7(495)268-04-70

Казахстан +7(7172)727-132

Киргизия +996(312)96-26-47

<https://liv.nt-rt.ru/> || [vis@nt-rt.ru](mailto:vis@nt-rt.ru)