

Алматы (7273)495-231  
Ангарск (3955)60-70-56  
Архангельск (8182)63-90-72  
Астрахань (8512)99-46-04  
Барнаул (3852)73-04-60  
Белгород (4722)40-23-64  
Благовещенск (4162)22-76-07  
Брянск (4832)59-03-52  
Владивосток (423)249-28-31  
Владикавказ (8672)28-90-48  
Владимир (4922)49-43-18  
Волгоград (844)278-03-48  
Вологда (8172)26-41-59  
Воронеж (473)204-51-73  
Екатеринбург (343)384-55-89

Иваново (4932)77-34-06  
Ижевск (3412)26-03-58  
Иркутск (395)279-98-46  
Казань (843)206-01-48  
Калининград (4012)72-03-81  
Калуга (4842)92-23-67  
Кемерово (3842)65-04-62  
Киров (8332)68-02-04  
Коломна (4966)23-41-49  
Кострома (4942)77-07-48  
Краснодар (861)203-40-90  
Красноярск (391)204-63-61  
Курск (4712)77-13-04  
Курган (3522)50-90-47  
Липецк (4742)52-20-81

Магнитогорск (3519)55-03-13  
Москва (495)268-04-70  
Мурманск (8152)59-64-93  
Набережные Челны (8552)20-53-41  
Нижний Новгород (831)429-08-12  
Новокузнецк (3843)20-46-81  
Ноябрьск (3496)41-32-12  
Новосибирск (383)227-86-73  
Омск (3812)21-46-40  
Орел (4862)44-53-42  
Оренбург (3532)37-68-04  
Пенза (8412)22-31-16  
Петрозаводск (8142)55-98-37  
Псков (8112)59-10-37  
Пермь (342)205-81-47

Ростов-на-Дону (863)308-18-15  
Рязань (4912)46-61-64  
Самара (846)206-03-16  
Санкт-Петербург (812)309-46-40  
Саратов (845)249-38-78  
Севастополь (8692)22-31-93  
Саранск (8342)22-96-24  
Симферополь (3652)67-13-56  
Смоленск (4812)29-41-54  
Сочи (862)225-72-31  
Ставрополь (8652)20-65-13  
Сургут (3462)77-98-35  
Сыктывкар (8212)25-95-17  
Тамбов (4752)50-40-97  
Тверь (4822)63-31-35

Тольятти (8482)63-91-07  
Томск (3822)98-41-53  
Тула (4872)33-79-87  
Тюмень (3452)66-21-18  
Ульяновск (8422)24-23-59  
Улан-Удэ (3012)59-97-51  
Уфа (347)229-48-12  
Хабаровск (4212)92-98-04  
Чебоксары (8352)28-53-07  
Челябинск (351)202-03-61  
Череповец (8202)49-02-64  
Чита (3022)38-34-83  
Якутск (4112)23-90-97  
Ярославль (4852)69-52-93

Россия +7(495)268-04-70

Казахстан +7(7172)727-132

Киргизия +996(312)96-26-47

<https://liv.nt-rt.ru/> || [vis@nt-rt.ru](mailto:vis@nt-rt.ru)



## Product description

furniture Swivel castor with brake with an overall height of 68 mm

Wheel diameter x width: 50 x 20 mm

Top plate with 4 mounting holes of 6,5 mm, mounting hole distance 46x46 mm and top plate outer dimensions: 60x60 mm

Wheel with plain bearing and rubber tyre with hardness 83 ° Shore A on polypropylene the double brake system, brakes the turning of the wheel and the swivel rotation.

### Approved and tested load capacity

Dynamic 40 kg

Static 50 kg

### Temperature range:

Continuous operation: -20 | +70°C

Short (10 min) exposure: -30 | +80°C

### Advantages of this Silent move Swivel castor with brake:

- ✓ friendly
- ✓ non intrusive
- ✓ base

## LIV SYSTEMS furniture Swivel castor with brake + rubber tyre Ø50 x W20mm for 40kg Prod ID: 35274

ID 35274: Castor overall height 68 mm | 4 mounting holes with distance 46x46 mm | Wheel with plain bearing and rubber tyre with hardness 83 ° Shore A | The double brake system, brakes the turning of the wheel and the swivel rotation. | Silent move, surfac

## Product information

- Article code 2-846 G1
- SKU 35274
- EAN 3838461352744



## Product description

Furniture Swivel castor with an overall height of 72 mm.

Wheel diameter x width: 50 x 17,5 mm.

Top plate with 4 mounting holes of 6,5 mm, mounting hole distance 46 x 46 mm and top plate outer dimensions: 60 x 60 mm.

Wheel with plain bearing and solid polyamide wheel with hardness  $70\pm 5$  ° Shore D.

### Approved and tested load capacity:

Dynamic: 80 kg

Static: 100 kg

### Temperature range:

Continuous operation: -25 | +80°C

Short (10 min) exposure: -30 | +110°C

### Advantages of furniture Swivel castor:

- ✓ attractive design
- ✓ rotating on spot

## LIV SYSTEMS furniture Swivel castor + solid polyamide wheel Ø50 x W17,5mm for 80kg Prod ID: 33663

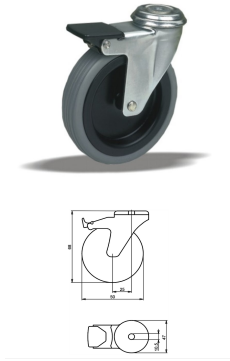
ID 33663: Castor overall height 72 mm | 4 mounting holes with distance 46x46 mm | Wheel with plain bearing and solid polyamide wheel with hardness  $70\pm 5$  ° Shore D | Essential relocation, visually attractive design, economical, easy rotating on spot

## Product information

- Article code 2-823 A2
- SKU 33663
- EAN 3838461336638

## Specifications

The result of our quality is maximum performance!



## Product description

furniture Swivel castor with brake with an overall height of 68 mm

Wheel diameter x width: 50 x 20 mm

Top plate with 4 mounting holes of 10,5 mm, mounting hole distance #\$\$ mm and top plate outer dimensions: 47 mm

Wheel with plain bearing and rubber tyre with hardness 83 ° Shore A on polypropylene

the double brake system, brakes the turning of the wheel and the swivel rotation.

### Approved and tested load capacity

Dynamic 40 kg

Static 50 kg

### Temperature range:

Continious operation: -20 | +70°C

Short (10 min) exposure: -30 | +80°C

### Advantages of this Silent move Swivel castor with brake:

- ✓ friendly
- ✓ non intrusive
- ✓ base

## LIV SYSTEMS furniture Swivel castor with brake + rubber tyre Ø50 x W20mm for 40kg Prod ID: 39303

ID 39303: Castor overall height 68 mm | 4 mounting holes with distance #\$\$ mm | Wheel with plain bearing and rubber tyre with hardness 83 ° Shore A | The double brake system, brakes the turning of the wheel and the swivel rotation. | Silent move, surface

## Product information

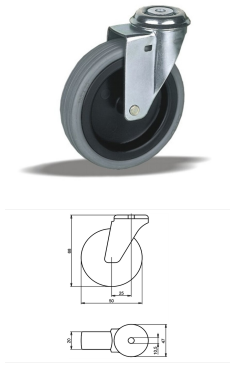
- Article code 2-846 H10
- SKU 39303
- EAN 3838461393037

## Specifications

The result of our quality is maximum performance!

[Close](#)

[Close](#)



## Product description

furniture Swivel castor with an overall height of 68 mm

Wheel diameter x width: 50 x 20 mm

Top plate with 4 mounting holes of 10,5 mm, mounting hole distance #50 mm and top plate outer dimensions: 47 mm

Wheel with plain bearing and rubber tyre with hardness 83 ° Shore A on polypropylene.

### Approved and tested load capacity

Dynamic 40 kg

Static 50 kg

### Temperature range:

Continuous operation: -20 | +70°C

Short (10 min) exposure: -30 | +80°C

### Advantages of this Silent move Swivel castor:

- ✓ friendly
- ✓ non intrusive
- ✓ base

## LIV SYSTEMS furniture Swivel castor + rubber tyre Ø50 x W20mm for 40kg Prod ID: 39294

ID 39294: Castor overall height 68 mm | 4 mounting holes with distance #50 mm | Wheel with plain bearing and rubber tyre with hardness 83 ° Shore A | Silent move, surface friendly, visually non intrusive, lightweight base

## Product information

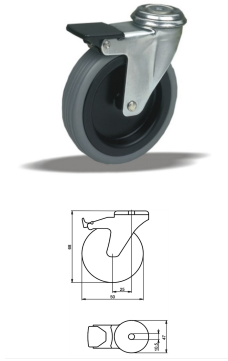
- Article code 2-823 H10
- SKU 39294
- EAN 3838461392948

## Specifications

The result of our quality is maximum performance!

[Close](#)

[Close](#)



## Product description

furniture Swivel castor with brake with an overall height of 68 mm

Wheel diameter x width: 50 x 25 mm

Top plate with 4 mounting holes of 10,5 mm, mounting hole distance #50 mm and top plate outer dimensions: 47 mm

Wheel with plain bearing and polyethylene tread with hardness 92 ° Shore A on polypropylene

the double brake system, brakes the turning of the wheel and the swivel rotation.

### Approved and tested load capacity

Dynamic 70 kg

Static 80 kg

### Temperature range:

Continuous operation: -20 | +60°C

Short (10 min) exposure: -30 | +80°C

### Advantages of this Invisible foundation Swivel castor with brake:

- ✓ deformation if rarely moved
- ✓ markings on the floor
- ✓ to turn

## LIV SYSTEMS furniture Swivel castor with brake + polyethylene tread Ø50 x W25mm for 70kg Prod ID: 39304

ID 39304: Castor overall height 68 mm | 4 mounting holes with distance #50 mm | Wheel with plain bearing and polyethylene tread with hardness 92 ° Shore A | The double brake system, brakes the turning of the wheel and the swivel rotation. | Invisible foundation

## Product information

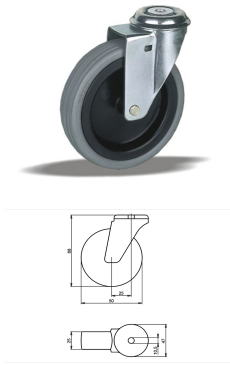
- Article code 2-846 T10
- SKU 39304
- EAN 3838461393044

## Specifications

The result of our quality is maximum performance!

[Close](#)

[Close](#)



## Product description

furniture Swivel castor with an overall height of 68 mm

Wheel diameter x width: 50 x 25 mm

Top plate with 4 mounting holes of 10,5 mm, mounting hole distance #50 mm and top plate outer dimensions: 47 mm

Wheel with plain bearing and polyethylene tread with hardness 92 ° Shore A on polypropylene.

### Approved and tested load capacity

Dynamic 70 kg

Static 80 kg

### Temperature range:

Continuous operation: -20 | +60°C

Short (10 min) exposure: -30 | +80°C

### Advantages of this Invisible foundation Swivel castor:

- ✓ deformation if rarely moved
- ✓ markings on the floor
- ✓ to turn

## LIV SYSTEMS furniture Swivel castor + polyethylene tread Ø50 x W25mm for 70kg Prod ID: 39295

ID 39295: Castor overall height 68 mm | 4 mounting holes with distance #50 mm | Wheel with plain bearing and polyethylene tread with hardness 92 ° Shore A | Invisible foundation, low deformation if rarely moved, no markings on the floor, easy to turn

## Product information

- Article code 2-823 T10
- SKU 39295
- EAN 3838461392955

## Specifications

The result of our quality is maximum performance!

[Close](#)

[Close](#)



## Product description

Furniture Swivel castor with brake with an overall height of 72 mm.

Wheel diameter x width: 50 x 17,5 mm.

Top plate with 4 mounting holes of 6,5 mm, mounting hole distance 46 x 46 mm and top plate outer dimensions: 60 x 60 mm.

Wheel with plain bearing and solid polyamide wheel with hardness  $70\pm 5$  ° Shore D.

The double brake system, brakes the turning of the wheel and the swivel rotation.

### Approved and tested load capacity:

Dynamic: 80 kg

Static: 100 kg

### Temperature range:

Continuous operation:  $-25$  |  $+80^{\circ}\text{C}$

Short (10 min) exposure:  $-30$  |  $+110^{\circ}\text{C}$

### Advantages of furniture Swivel castor:

✓ attractive design

✓ rotating on spot

## LIV SYSTEMS furniture Swivel castor with brake + solid polyamide wheel Ø50 x W17,5mm for 80kg Prod ID: 39314

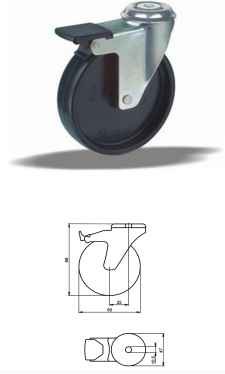
ID 39314: Castor overall height 72 mm | 4 mounting holes with distance 46x46 mm | Wheel with plain bearing and solid polyamide wheel with hardness  $70\pm 5$  ° Shore D | The double brake system, brakes the turning of the wheel and the swivel rotation. | Essent

## Product information

- Article code 2-846 A2
- SKU 39314
- EAN 3838461393143

## Specifications

The result of our quality is maximum performance!



## Product description

Furniture Swivel castor with brake with an overall height of 68 mm.

Wheel diameter x width: 50 x 25 mm.

Top plate with 4 mounting holes of 10,5 mm, mounting hole distance #\$\$ mm and top plate outer dimensions: 47 mm.

Wheel with plain bearing and solid polypropylene wheel with hardness 60±5 ° Shore D

the double brake system, brakes the turning of the wheel and the swivel rotation.

### Approved and tested load capacity:

Dynamic: 60 kg

Static: 70 kg

### Temperature range:

Continuous operation: -20 | +60°C

Short (10 min) exposure: /°C

### Advantages of Swivel castor with brake:

✓ attractive design

✓ rotating on spot

## LIV SYSTEMS furniture Swivel castor with brake + solid polypropylene wheel Ø50 x W25mm for 60kg Prod ID: 39313

ID 39313: Castor overall height 68 mm | 4 mounting holes with distance #\$\$ mm | Wheel with plain bearing and solid polypropylene wheel with hardness 60±5 ° Shore D | The double brake system, brakes the turning of the wheel and the swivel rotation. | Esse

## Product information

- Article code 2-846 B10
- SKU 39313
- EAN 3838461393136

## Specifications

The result of our quality is maximum performance!

[Close](#)

[Close](#)





## Product description

furniture Swivel castor with brake with an overall height of 68 mm

Wheel diameter x width: 50 x 25 mm

Top plate with 4 mounting holes of 6,5 mm, mounting hole distance 46x46 mm and top plate outer dimensions: 60x60 mm

Wheel with plain bearing and solid polypropylene wheel with hardness  $60\pm 5$  ° Shore D  
the double brake system, brakes the turning of the wheel and the swivel rotation.

### Approved and tested load capacity

Dynamic 60 kg

Static 70 kg

### Temperature range:

Continuous operation:  $-20$  |  $+60$  °C

Short (10 min) exposure: / °C

### Advantages of this Essential relocation Swivel castor with brake:

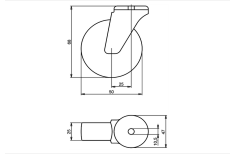
- ✓ attractive design
- ✓
- ✓ rotating on spot

## LIV SYSTEMS furniture Swivel castor with brake + solid polypropylene wheel Ø50 x W25mm for 60kg Prod ID: 35073

ID 35073: Castor overall height 68 mm | 4 mounting holes with distance 46x46 mm | Wheel with plain bearing and solid polypropylene wheel with hardness  $60\pm 5$  ° Shore D | The double brake system, brakes the turning of the wheel and the swivel rotation. | Es

## Product information

- Article code 2-846 A1
- SKU 35073
- EAN 3838461350733



## Product description

furniture Swivel castor with an overall height of 68 mm

Wheel diameter x width: 50 x 25 mm

Top plate with 4 mounting holes of 10,5 mm, mounting hole distance #50 mm and top plate outer dimensions: 47 mm

Wheel with plain bearing and solid polypropylene wheel with hardness 60±5 ° Shore D.

### Approved and tested load capacity

Dynamic 50 kg

Static 60 kg

### Temperature range:

Continuous operation: -20 | +60°C

Short (10 min) exposure: /°C

### Advantages of this Essential relocation Swivel castor:

- ✓ attractive design
- ✓
- ✓ rotating on spot

## LIV SYSTEMS furniture Swivel castor + solid polypropylene wheel Ø50 x W25mm for 50kg Prod ID: 39305

ID 39305: Castor overall height 68 mm | 4 mounting holes with distance #50 mm | Wheel with plain bearing and solid polypropylene wheel with hardness 60±5 ° Shore D | Essential relocation, visually attractive design, economical, easy rotating on spot

## Product information

- Article code 2-823 B10
- SKU 39305
- EAN 3838461393051

## Specifications

The result of our quality is maximum performance!

[Close](#)

[Close](#)



## Product description

furniture Swivel castor with an overall height of 68 mm

Wheel diameter x width: 50 x 25 mm

Top plate with 4 mounting holes of 6,5 mm, mounting hole distance 46x46 mm and top plate outer dimensions: 60x60 mm

Wheel with plain bearing and solid polypropylene wheel with hardness 60±5 ° Shore D.

### Approved and tested load capacity

Dynamic 50 kg

Static 60 kg

### Temperature range:

Continuous operation: -20 | +60°C

Short (10 min) exposure: /°C

### Advantages of this Essential relocation Swivel castor:

- ✓ attractive design
- ✓
- ✓ rotating on spot

## LIV SYSTEMS furniture Swivel castor + solid polypropylene wheel Ø50 x W25mm for 50kg Prod ID: 32553

ID 32553: Castor overall height 68 mm | 4 mounting holes with distance 46x46 mm | Wheel with plain bearing and solid polypropylene wheel with hardness 60±5 ° Shore D | Essential relocation, visually attractive design, economical, easy rotating on spot

## Product information

- Article code 2-823 A
- SKU 32553
- EAN 3838461325533



## Product description

furniture Swivel castor with an overall height of 68 mm

Wheel diameter x width: 50 x 20 mm

Top plate with 4 mounting holes of 6,5 mm, mounting hole distance 46x46 mm and top plate outer dimensions: 60x60 mm

Wheel with plain bearing and rubber tyre with hardness 83 ° Shore A on polypropylene.

### Approved and tested load capacity

Dynamic 40 kg

Static 50 kg

### Temperature range:

Continuous operation: -20 | +70°C

Short (10 min) exposure: -30 | +80°C

### Advantages of this Silent move Swivel castor:

- ✓ friendly
- ✓ non intrusive
- ✓ base

## LIV SYSTEMS furniture Swivel castor + rubber tyre Ø50 x W20mm for 40kg

### Prod ID: 39293

ID 39293: Castor overall height 68 mm | 4 mounting holes with distance 46x46 mm | Wheel with plain bearing and rubber tyre with hardness 83 ° Shore A | Silent move, surface friendly, visually non intrusive, lightweight base

## Product information

- Article code 2-823 G
- SKU 39293
- EAN 3838461392931

## Specifications



## Product description

furniture Swivel castor with brake with an overall height of 68 mm

Wheel diameter x width: 50 x 25 mm

Top plate with 4 mounting holes of 6,5 mm, mounting hole distance 46x46 mm and top plate outer dimensions: 60x60 mm

Wheel with plain bearing and polyethylene tread with hardness 92 ° Shore A on polypropylene the double brake system, brakes the turning of the wheel and the swivel rotation.

### Approved and tested load capacity

Dynamic 70 kg

Static 80 kg

### Temperature range:

Continuous operation: -20 | +60°C

Short (10 min) exposure: -30 | +80°C

### Advantages of this Invisible foundation Swivel castor with brake:

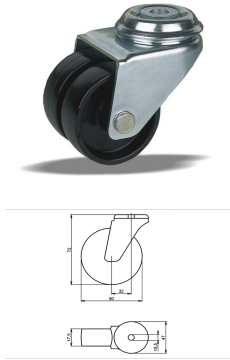
- ✓ deformation if rarely moved
- ✓ markings on the floor
- ✓ to turn

## LIV SYSTEMS furniture Swivel castor with brake + polyethylene tread Ø50 x W25mm for 70kg Prod ID: 34815

ID 34815: Castor overall height 68 mm | 4 mounting holes with distance 46x46 mm | Wheel with plain bearing and polyethylene tread with hardness 92 ° Shore A | The double brake system, brakes the turning of the wheel and the swivel rotation. | Invisible fo

## Product information

- Article code 2-846 S1
- SKU 34815
- EAN 3838461348150



## Product description

Furniture Swivel castor with an overall height of 72 mm.

Wheel diameter x width: 50 x 17,5 mm.

Top plate with 4 mounting holes of 10,5 mm, mounting hole distance #5% mm and top plate outer dimensions: 47 mm.

Wheel with plain bearing and solid polyamide wheel with hardness 70±5 ° Shore D.

### Approved and tested load capacity:

Dynamic: 80 kg

Static: 100 kg

### Temperature range:

Continuous operation: -25 | +80°C

Short (10 min) exposure: -30 | +110°C

### Advantages of furniture Swivel castor:

- ✓ attractive design
- ✓ rotating on spot

## LIV SYSTEMS furniture Swivel castor + solid polyamide wheel Ø50 x W17,5mm for 80kg Prod ID: 33673

ID 33673: Castor overall height 72 mm | 4 mounting holes with distance #5% mm | Wheel with plain bearing and solid polyamide wheel with hardness 70±5 ° Shore D | Essential relocation, visually attractive design, economical, easy rotating on spot

## Product information

- Article code 2-823 B20
- SKU 33673
- EAN 3838461336737

## Specifications

The result of our quality is maximum performance!

[Close](#)

[Close](#)



## Product description

Furniture Wheel with plain bearing and solid polyamide wheel with hardness  $70\pm 5$  ° Shore D.

Wheel diameter x width: 50 x 17,5 mm

Axle hole: 8 mm

Hub length: 22 mm

### Approved and tested load capacity:

Dynamic: 60 kg

Static: 70 kg

### Temperature range:

Continuous operation:  $-25$  |  $+80^{\circ}\text{C}$

Short (10 min) exposure:  $-30$  |  $+110^{\circ}\text{C}$

### Advantages of furniture wheel:

✓ attractive design

✓ rotating on spot

## LIV SYSTEMS furniture wheel + solid polyamide wheel Ø50 x W17,5mm for 60kg Prod ID: 33674

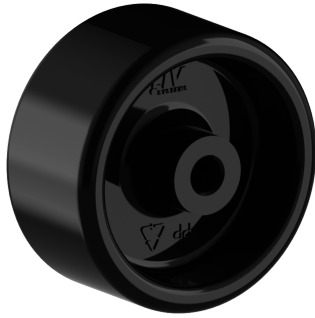
ID 33674: furniture Wheel with plain bearing and solid polyamide wheel with hardness  $70\pm 5$  ° Shore D | Axle hole: 8 mm | Hub length: 22 mm | Essential relocation, visually attractive design, economical, easy rotating on spot

## Product information

- Article code 2-823-002
- SKU 33674
- EAN 3838461336744

## Specifications

The result of our quality is maximum performance!



## Product description

furniture Wheel with plain bearing and solid polypropylene wheel with hardness  $60\pm 5$  ° Shore D

Wheel diameter x width: 50 x 25 mm

Axle hole: 6 mm

Hub length: 27,5 mm

### Approved and tested load capacity

Dynamic 50 kg

Static 60 kg

### Temperature range:

Continuous operation:  $-20$  |  $+60$ °C

Short (10 min) exposure:  $0$  |  $+30$ °C

### Advantages of this Essential relocation wheel:

✓ attractive design

✓

✓ rotating on spot

## LIV SYSTEMS furniture wheel + solid polypropylene wheel Ø50 x W25mm for 50kg Prod ID: 32533

ID 32533:furniture Wheel with plain bearing and solid polypropylene wheel with hardness  $60\pm 5$  ° Shore D | Axle hole: 6 mm | Hub length: 27,5 mm | Essential relocation, visually attractive design, economical, easy rotating on spot

## Product information

- Article code 2-823
- SKU 32533
- EAN 3838461325335





## Product description

furniture Wheel with plain bearing and rubber tyre with hardness 83 ° Shore A on polypropylene

Wheel diameter x width: 50 x 20 mm

Axle hole: 6 mm

Hub length: 27,5 mm

### Approved and tested load capacity

Dynamic 40 kg

Static 50 kg

### Temperature range:

Continuous operation: -20 | +70°C

Short (10 min) exposure: -30 | +80°C

### Advantages of this Silent move wheel:

- ✓ friendly
- ✓ non intrusive
- ✓ base

## LIV SYSTEMS furniture wheel + rubber tyre Ø50 x W20mm for 40kg Prod ID: 33963

ID 33963:furniture Wheel with plain bearing and rubber tyre with hardness 83 ° Shore A on polypropylene | Axle hole: 6 mm | Hub length: 27,5 mm | Silent move, surface friendly, visually non intrusive, lightweight base

## Product information

- Article code 2-830 A
- SKU 33963
- EAN 3838461339639



## Product description

furniture Swivel castor with an overall height of 68 mm

Wheel diameter x width: 50 x 25 mm

Top plate with 4 mounting holes of 6,5 mm, mounting hole distance 46x46 mm and top plate outer dimensions: 60x60 mm

Wheel with plain bearing and thermoplastic rubber with hardness 92 ° Shore A on polypropylene.

### Approved and tested load capacity

Dynamic 70 kg

Static 80 kg

### Temperature range:

Continuous operation: -20 | +60°C

Short (10 min) exposure: -30 | +80°C

### Advantages of this Invisible foundation Swivel castor:

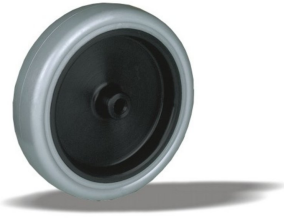
- ✓ deformation if rarely moved
- ✓ markings on the floor
- ✓ to turn

## LIV SYSTEMS furniture Swivel castor + thermoplastic rubber Ø50 x W25mm for 70kg Prod ID: 33983

ID 33983: Castor overall height 68 mm | 4 mounting holes with distance 46x46 mm | Wheel with plain bearing and thermoplastic rubber with hardness 92 ° Shore A | Invisible foundation, low deformation if rarely moved, no markings on the floor, easy to turn

## Product information

- Article code 2-823 S
- SKU 33983
- EAN 3838461339837



## Product description

furniture Wheel with plain bearing and thermoplastic rubber with hardness 92 ° Shore A on polypropylene

Wheel diameter x width: 50 x 25 mm

Axle hole: 6 mm

Hub length: 27,5 mm

### Approved and tested load capacity

Dynamic 70 kg

Static 80 kg

### Temperature range:

Continuous operation: -20 | +60°C

Short (10 min) exposure: -30 | +80°C

### Advantages of this Invisible foundation wheel:

- ✓ deformation if rarely moved
- ✓ markings on the floor
- ✓ to turn

## LIV SYSTEMS furniture wheel + thermoplastic rubber Ø50 x W25mm for 70kg Prod ID: 33863

ID 33863:furniture Wheel with plain bearing and thermoplastic rubber with hardness 92 ° Shore A on polypropylene | Axle hole: 6 mm | Hub length: 27,5 mm | Invisible foundation, low deformation if rarely moved, no markings on the floor, easy to turn

## Product information

- Article code 2-830 C
- SKU 33863
- EAN 3838461338632

Алматы (7273)495-231  
Ангарск (3955)60-70-58  
Архангельск (8182)63-90-72  
Астрахань (8512)99-46-04  
Барнаул (3852)73-04-60  
Белгород (4722)40-23-64  
Благовещенск (4162)22-76-07  
Брянск (4832)59-03-52  
Владивосток (423)249-28-31  
Владикавказ (8672)28-90-48  
Владимир (4922)49-43-18  
Волгоград (844)278-03-48  
Вологда (8172)26-41-59  
Воронеж (473)204-51-73  
Екатеринбург (343)384-55-89

Иваново (4932)77-34-06  
Ижевск (3412)26-03-58  
Иркутск (395)279-98-46  
Казань (843)206-01-48  
Калининград (4012)72-03-81  
Калуга (4842)92-23-67  
Кемерово (3842)65-04-62  
Киров (8332)68-02-04  
Коломна (4966)23-41-49  
Кострома (4942)77-07-48  
Краснодар (861)203-40-90  
Красноярск (391)204-63-61  
Курск (4712)77-13-04  
Курган (3522)50-90-47  
Липецк (4742)52-20-81

Магнитогорск (3519)55-03-13  
Москва (495)268-04-70  
Мурманск (8152)59-64-93  
Набережные Челны (8552)20-53-41  
Нижний Новгород (831)429-08-12  
Новокузнецк (3843)20-46-81  
Ноябрьск (3496)41-32-12  
Новосибирск (383)227-86-73  
Омск (3812)21-46-40  
Острона (4862)44-53-42  
Оренбург (3532)37-68-04  
Пенза (8412)22-31-16  
Петрозаводск (8142)55-98-37  
Псков (8112)59-10-37  
Пермь (342)205-81-47

Ростов-на-Дону (863)308-18-15  
Рязань (4912)46-61-64  
Самара (846)206-03-16  
Санкт-Петербург (812)309-46-40  
Саратов (845)249-38-78  
Севастополь (8692)22-31-93  
Саранск (8342)22-96-24  
Симферополь (3652)67-13-56  
Смоленск (4812)29-41-54  
Сочи (862)225-72-31  
Ставрополь (8652)20-65-13  
Сургут (3462)77-98-35  
Сыктывкар (8212)25-95-17  
Тамбов (4752)50-40-97  
Тверь (4822)63-31-35

Тольятти (8482)63-91-07  
Томск (3822)98-41-53  
Тула (4872)33-79-87  
Тюмень (3452)66-21-18  
Ульяновск (8422)24-23-59  
Улан-Удэ (3012)59-97-51  
Уфа (347)229-48-12  
Хабаровск (4212)92-98-04  
Чебоксары (8352)28-53-07  
Челябинск (351)202-03-61  
Череповец (8202)49-02-64  
Чита (3022)38-34-83  
Якутск (4112)23-90-97  
Ярославль (4852)69-52-93

Россия +7(495)268-04-70

Казахстан +7(7172)727-132

Киргизия +996(312)96-26-47

<https://liv.nt-rt.ru/> || [vis@nt-rt.ru](mailto:vis@nt-rt.ru)