

Алматы (7273)495-231  
Ангарск (3955)60-70-56  
Архангельск (8182)63-90-72  
Астрахань (8512)99-46-04  
Барнаул (3852)73-04-60  
Белгород (4722)40-23-64  
Благовещенск (4162)22-76-07  
Брянск (4832)59-03-52  
Владивосток (423)249-28-31  
Владикавказ (8672)28-90-48  
Владимир (4922)49-43-18  
Волгоград (844)278-03-48  
Вологда (8172)26-41-59  
Воронеж (473)204-51-73  
Екатеринбург (343)384-55-89

Иваново (4932)77-34-06  
Ижевск (3412)26-03-58  
Иркутск (395)279-98-46  
Казань (843)206-01-48  
Калининград (4012)72-03-81  
Калуга (4842)92-23-67  
Кемерово (3842)65-04-62  
Киров (8332)68-02-04  
Коломна (4966)23-41-49  
Кострома (4942)77-07-48  
Краснодар (861)203-40-90  
Красноярск (391)204-63-61  
Курск (4712)77-13-04  
Курган (3522)50-90-47  
Липецк (4742)52-20-81

Магнитогорск (3519)55-03-13  
Москва (495)268-04-70  
Мурманск (8152)59-64-93  
Набережные Челны (8552)20-53-41  
Нижний Новгород (831)429-08-12  
Новокузнецк (3843)20-46-81  
Ноябрьск (3496)41-32-12  
Новосибирск (383)227-86-73  
Омск (3812)21-46-40  
Орел (4862)44-53-42  
Оренбург (3532)37-68-04  
Пенза (8412)22-31-16  
Петрозаводск (8142)55-98-37  
Псков (8112)59-10-37  
Пермь (342)205-81-47

Ростов-на-Дону (863)308-18-15  
Рязань (4912)46-61-64  
Самара (846)206-03-16  
Санкт-Петербург (812)309-46-40  
Саратов (845)249-38-78  
Севастополь (8692)22-31-93  
Саранск (8342)22-96-24  
Симферополь (3652)67-13-56  
Смоленск (4812)29-41-54  
Сочи (862)225-72-31  
Ставрополь (8652)20-65-13  
Сургут (3462)77-98-35  
Сыктывкар (8212)25-95-17  
Тамбов (4752)50-40-97  
Тверь (4822)63-31-35

Тольятти (8482)63-91-07  
Томск (3822)98-41-53  
Тула (4872)33-79-87  
Тюмень (3452)66-21-18  
Ульяновск (8422)24-23-59  
Улан-Удэ (3012)59-97-51  
Уфа (347)229-48-12  
Хабаровск (4212)92-98-04  
Чебоксары (8352)28-53-07  
Челябинск (351)202-03-61  
Череповец (8202)49-02-64  
Чита (3022)38-34-83  
Якутск (4112)23-90-97  
Ярославль (4852)69-52-93

Россия +7(495)268-04-70

Казахстан +7(7172)727-132

Киргизия +996(312)96-26-47

<https://liv.nt-rt.ru/> || [vis@nt-rt.ru](mailto:vis@nt-rt.ru)



## Product description

standard Swivel transport castor with brake with an overall height of 106 mm

Wheel diameter x width: 80 x 30 mm

Top plate with 4 mounting holes of #5% mm, mounting hole distance #5% mm and top plate outer dimensions: 70 mm

Wheel with plain bearing and black rubber tyre with hardness 80 ° Shore A on polypropylene the double brake system, brakes the turning of the wheel and the swivel rotation.

### Approved and tested load capacity

Dynamic 65 kg

Static 80 kg

### Temperature range:

Continuous operation: -20 | +70°C

Short (10 min) exposure: -30 | +80°C

### Advantages of this Smooth drive wheel Swivel transport castor with brake:

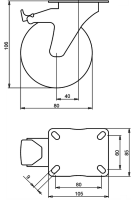
- ✓ wet floor
- ✓ reduces the transmission of both vibration and noise
- ✓ with low obstacles

## LIV SYSTEMS standard Swivel transport castor with brake + black rubber tyre Ø80 x W30mm for 65kg Prod ID: 31335

ID 31335: Castor overall height 106 mm | 4 mounting holes with distance #5% mm | Wheel with plain bearing and black rubber tyre with hardness 80 ° Shore A | The double brake system, brakes the turning of the wheel and the swivel rotation. | Smooth drive w

## Product information

- Article code 2-986 ISO
- SKU 31335
- EAN 3838461313356



## Product description

standard Swivel transport castor with brake with an overall height of 106 mm

Wheel diameter x width: 80 x 30 mm

Top plate with 4 mounting holes of 9 mm, mounting hole distance 80x60 mm and top plate outer dimensions: 105x85 mm

Wheel with roller bearing and black rubber tyre with hardness 80 ° Shore A on polypropylene  
the double brake system, brakes the turning of the wheel and the swivel rotation.

### Approved and tested load capacity

Dynamic 65 kg

Static 80 kg

### Temperature range:

Continuous operation: -20 | +70°C

Short (10 min) exposure: -30 | +80°C

### Advantages of this Smooth drive wheel Swivel transport castor with brake:

- ✓ wet floor
- ✓ reduces the transmission of both vibration and noise
- ✓ with low obstacles

## LIV SYSTEMS standard Swivel transport castor with brake + black rubber tyre Ø80 x W30mm for 65kg Prod ID: 31193

ID 31193: Castor overall height 106 mm | 4 mounting holes with distance 80x60 mm | Wheel with roller bearing and black rubber tyre with hardness 80 ° Shore A | The double brake system, brakes the turning of the wheel and the swivel rotation. | Smooth driv

## Product information

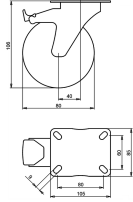
- Article code 2-928 ISO
- SKU 31193
- EAN 3838461311932

## Specifications

The result of our quality is maximum performance!

[Close](#)

[Close](#)



## Product description

standard Swivel castor with brake with an overall height of 106 mm  
 Wheel diameter x width: 80 x 30 mm  
 Top plate with 4 mounting holes of 9 mm, mounting hole distance 80x60 mm and top plate outer dimensions: 105x85 mm  
 Wheel with roller bearing and grey rubber tyre with hardness 83 ° Shore A on polypropylene  
 the double brake system, brakes the turning of the wheel and the swivel rotation.

### Approved and tested load capacity

Dynamic 65 kg  
 Static 80 kg

### Temperature range:

Continuous operation: -20 | +70°C  
 Short (10 min) exposure: -30 | +80°C

### Advantages of this Elegant trip Swivel castor with brake:

- ✓ rubber is non-marking and leaves no marks on the floor
- ✓ reduces the transmission of both vibration and noise
- ✓ and outdoor use

## LIV SYSTEMS standard Swivel castor with brake + grey rubber tyre Ø80 x W30mm for 65kg Prod ID: 39415

ID 39415: Castor overall height 106 mm | 4 mounting holes with distance 80x60 mm | Wheel with roller bearing and grey rubber tyre with hardness 83 ° Shore A | The double brake system, brakes the turning of the wheel and the swivel rotation. | Elegant trip

## Product information

- Article code 2-928 ISO
- SKU 39415
- EAN 3838461394157

## Specifications

The result of our quality is maximum performance!

[Close](#)

[Close](#)



## Product description

standard Wheel with roller bearing and grey rubber tyre with hardness 83 ° Shore A on polypropylene

Wheel diameter x width: 80 x 30 mm

Axle hole: 12 mm

Hub length: 44 mm

### Approved and tested load capacity

Dynamic 65 kg

Static 80 kg

### Temperature range:

Continuous operation: -20 | +70°C

Short (10 min) exposure: -30 | +80°C

### Advantages of this Elegant trip wheel:

- ✓ rubber is non-marking and leaves no marks on the floor
- ✓ reduces the transmission of both vibration and noise
- ✓ and outdoor use

## LIV SYSTEMS standard wheel + grey rubber tyre Ø80 x W30mm for 65kg

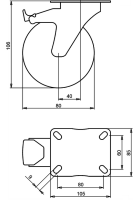
### Prod ID: 39355

ID 39355: standard Wheel with roller bearing and grey rubber tyre with hardness 83 ° Shore A on polypropylene | Axle hole: 12 mm | Hub length: 44 mm | Elegant trip, Grey rubber is non-marking and leaves no marks on the floor, rubber reduces the transmissio

## Product information

- Article code 2-942 A
- SKU 39355
- EAN 3838461393556





## Product description

standard Swivel castor with brake with an overall height of 106 mm  
 Wheel diameter x width: 80 x 30 mm  
 Top plate with 4 mounting holes of 9 mm, mounting hole distance 80x60 mm and top plate outer dimensions: 105x85 mm  
 Wheel with plain bearing and grey rubber tyre with hardness 83 ° Shore A on polypropylene  
 the double brake system, brakes the turning of the wheel and the swivel rotation.

### Approved and tested load capacity

Dynamic 65 kg  
 Static 80 kg

### Temperature range:

Continuous operation: -20 | +70°C  
 Short (10 min) exposure: -30 | +80°C

### Advantages of this Elegant trip Swivel castor with brake:

- ✓ rubber is non-marking and leaves no marks on the floor
- ✓ reduces the transmission of both vibration and noise
- ✓ and outdoor use

## LIV SYSTEMS standard Swivel castor with brake + grey rubber tyre Ø80 x W30mm for 65kg Prod ID: 39423

ID 39423: Castor overall height 106 mm | 4 mounting holes with distance 80x60 mm | Wheel with plain bearing and grey rubber tyre with hardness 83 ° Shore A | The double brake system, brakes the turning of the wheel and the swivel rotation. | Elegant trip,

## Product information

- Article code 2-935 ISO
- SKU 39423
- EAN 3838461394232

## Specifications

The result of our quality is maximum performance!

[Close](#)

[Close](#)



## Product description

standard Wheel with roller bearing and black rubber tyre with hardness 80 ° Shore A on steel rim with electrogalvanization zinc plating anti-corrosion protection Cr6-free

Wheel diameter x width: 80 x 30 mm

Axle hole: 12 mm

Hub length: 44 mm

### Approved and tested load capacity

Dynamic 65 kg

Static 80 kg

### Temperature range:

Continuous operation: -20 | +70°C

Short (10 min) exposure: -30 | +80°C

### Advantages of this Comfortable drive wheel:

- ✓ to manoeuvre
- ✓ performance on uneven floor or obstacles
- ✓ and strong wheel systems

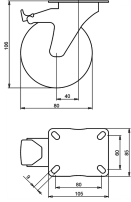
## LIV SYSTEMS standard transport wheel + black rubber tyre Ø80 x W30mm for 65kg Prod ID: 59303

ID 59303: standard Wheel with roller bearing and black rubber tyre with hardness 80 ° Shore A on steel rim with electrogalvanization zinc plating anti-corrosion protection Cr6-free | Axle hole: 12 mm | Hub length: 44 mm |

Comfortable drive, easy to manoeuvre

## Product information

- Article code 2-591 ISO
- SKU 59303
- EAN 3838461593031



## Product description

standard Swivel transport castor with brake with an overall height of 106 mm

Wheel diameter x width: 80 x 30 mm

Top plate with 4 mounting holes of 9 mm, mounting hole distance 80x60 mm and top plate outer dimensions: 105x85 mm

Wheel with roller bearing and black rubber tyre with hardness 80 ° Shore A on steel rim with electrogalvanization zinc plating anti-corrosion protection Cr6-free the double brake system, brakes the turning of the wheel and the swivel rotation.

### Approved and tested load capacity

Dynamic 65 kg

Static 80 kg

### Temperature range:

Continuous operation: -20 | +70°C

Short (10 min) exposure: -30 | +80°C

### Advantages of this Comfortable drive Swivel transport castor with brake:

- ✓ to manoeuvre
- ✓ performance on uneven floor or obstacles
- ✓ and strong wheel systems

## LIV SYSTEMS standard Swivel transport castor with brake + black rubber tyre Ø80 x W30mm for 65kg Prod ID: 30293

ID 30293: Castor overall height 106 mm | 4 mounting holes with distance 80x60 mm | Wheel with roller bearing and black rubber tyre with hardness 80 ° Shore A | The double brake system, brakes the turning of the wheel and the swivel rotation. | Comfortable

## Product information

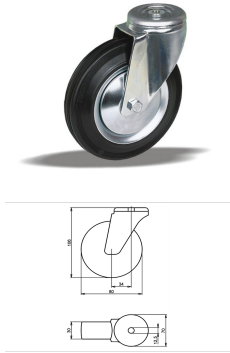
- Article code 2-438 A
- SKU 30293
- EAN 3838461302930

## Specifications

The result of our quality is maximum performance!

[Close](#)

[Close](#)



## Product description

standard Swivel transport castor with an overall height of 106 mm

Wheel diameter x width: 80 x 30 mm

Top plate with 4 mounting holes of 12,5 mm, mounting hole distance #\$\$ mm and top plate outer dimensions: 70 mm

Wheel with plain bearing and black rubber tyre with hardness 80 ° Shore A on steel rim with electrogalvanization zinc plating anti-corrosion protection Cr6-free.

### Approved and tested load capacity

Dynamic 65 kg

Static 80 kg

### Temperature range:

Continous operation: -20 | +70°C

Short (10 min) exposure: -30 | +80°C

### Advantages of this Comfortable drive Swivel transport castor:

- ✓ to manoeuvre
- ✓ performance on uneven floor or obstacles
- ✓ and strong wheel systems

## LIV SYSTEMS standard Swivel transport castor + black rubber tyre Ø80 x W30mm for 65kg Prod ID: 34013

ID 34013: Castor overall height 106 mm | 4 mounting holes with distance #\$\$ mm | Wheel with plain bearing and black rubber tyre with hardness 80 ° Shore A | Comfortable drive, easy to manoeuvre, good performance on uneven floor or obstacles, robust and st

## Product information

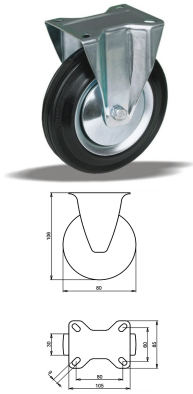
- Article code 2-184 L12
- SKU 34013
- EAN 3838461340130

## Specifications

The result of our quality is maximum performance!

[Close](#)

[Close](#)



## Product description

standard fixed transport castor with an overall height of 106 mm

Wheel diameter x width: 80 x 30 mm

Top plate with 4 mounting holes of 9 mm, mounting hole distance 80x60 mm and top plate outer dimensions: 105x85 mm

Wheel with plain bearing and black rubber tyre with hardness 80 ° Shore A on steel rim with electrogalvanization zinc plating anti-corrosion protection Cr6-free.

### Approved and tested load capacity

Dynamic 65 kg

Static 80 kg

### Temperature range:

Continuous operation: -20 | +70°C

Short (10 min) exposure: -30 | +80°C

### Advantages of this Comfortable drive fixed transport castor:

- ✓ to manoeuvre
- ✓ performance on uneven floor or obstacles
- ✓ and strong wheel systems

## LIV SYSTEMS standard fixed transport castor + black rubber tyre Ø80 x W30mm for 65kg Prod ID: 62399

ID 62399: Castor overall height 106 mm | 4 mounting holes with distance 80x60 mm | Wheel with plain bearing and black rubber tyre with hardness 80 ° Shore A | Comfortable drive, easy to manoeuvre, good performance on uneven floor or obstacles, robust and

## Product information

- Article code 2-116 ISO
- SKU 62399
- EAN 3838461623998

## Specifications

The result of our quality is maximum performance!

[Close](#)

[Close](#)



## Product description

standard Wheel with plain bearing and grey rubber tyre with hardness 83 ° Shore A on polypropylene

Wheel diameter x width: 80 x 30 mm

Axle hole: 12 mm

Hub length: 44 mm

### Approved and tested load capacity

Dynamic 65 kg

Static 80 kg

### Temperature range:

Continuous operation: -20 | +70°C

Short (10 min) exposure: -30 | +80°C

### Advantages of this Elegant trip wheel:

- ✓ rubber is non-marking and leaves no marks on the floor
- ✓ reduces the transmission of both vibration and noise
- ✓ and outdoor use

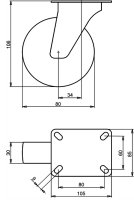
## LIV SYSTEMS standard wheel + grey rubber tyre Ø80 x W30mm for 65kg

### Prod ID: 38863

ID 38863: standard Wheel with plain bearing and grey rubber tyre with hardness 83 ° Shore A on polypropylene | Axle hole: 12 mm | Hub length: 44 mm | Elegant trip, Grey rubber is non-marking and leaves no marks on the floor, rubber reduces the transmission

## Product information

- Article code 2-942 ISO
- SKU 38863
- EAN 3838461388637



## Product description

standard Swivel castor with an overall height of 106 mm

Wheel diameter x width: 80 x 30 mm

Top plate with 4 mounting holes of 9 mm, mounting hole distance 80x60 mm and top plate outer dimensions: 105x85 mm

Wheel with plain bearing and grey rubber tyre with hardness 83 ° Shore A on polypropylene.

### Approved and tested load capacity

Dynamic 65 kg

Static 80 kg

### Temperature range:

Continuous operation: -20 | +70°C

Short (10 min) exposure: -30 | +80°C

### Advantages of this Elegant trip Swivel castor:

- ✓ rubber is non-marking and leaves no marks on the floor
- ✓ reduces the transmission of both vibration and noise
- ✓ and outdoor use

## LIV SYSTEMS standard Swivel castor + grey rubber tyre Ø80 x W30mm for 65kg Prod ID: 39385

ID 39385: Castor overall height 106 mm | 4 mounting holes with distance 80x60 mm | Wheel with plain bearing and grey rubber tyre with hardness 83 ° Shore A | Elegant trip, Grey rubber is non-marking and leaves no marks on the floor, rubber reduces the tra

## Product information

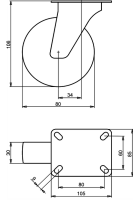
- Article code 2-921 ISO
- SKU 39385
- EAN 3838461393853

## Specifications

The result of our quality is maximum performance!

[Close](#)

[Close](#)



## Product description

standard Swivel castor with an overall height of 106 mm

Wheel diameter x width: 80 x 30 mm

Top plate with 4 mounting holes of 9 mm, mounting hole distance 80x60 mm and top plate outer dimensions: 105x85 mm

Wheel with roller bearing and grey rubber tyre with hardness 83 ° Shore A on polypropylene.

### Approved and tested load capacity

Dynamic 65 kg

Static 80 kg

### Temperature range:

Continuous operation: -20 | +70°C

Short (10 min) exposure: -30 | +80°C

### Advantages of this Elegant trip Swivel castor:

- ✓ rubber is non-marking and leaves no marks on the floor
- ✓ reduces the transmission of both vibration and noise
- ✓ and outdoor use

## LIV SYSTEMS standard Swivel castor + grey rubber tyre Ø80 x W30mm for 65kg Prod ID: 39384

ID 39384: Castor overall height 106 mm | 4 mounting holes with distance 80x60 mm | Wheel with roller bearing and grey rubber tyre with hardness 83 ° Shore A | Elegant trip, Grey rubber is non-marking and leaves no marks on the floor, rubber reduces the tr

## Product information

- Article code 2-914 ISO
- SKU 39384
- EAN 3838461393846

## Specifications

The result of our quality is maximum performance!

[Close](#)

[Close](#)





## Product description

standard Swivel castor with an overall height of 106 mm

Wheel diameter x width: 80 x 30 mm

Top plate with 4 mounting holes of #5 mm, mounting hole distance #50 mm and top plate outer dimensions: 70 mm

Wheel with plain bearing and grey rubber tyre with hardness 83 ° Shore A on polypropylene.

### Approved and tested load capacity

Dynamic 65 kg

Static 80 kg

### Temperature range:

Continuous operation: -20 | +70°C

Short (10 min) exposure: -30 | +80°C

### Advantages of this Elegant trip Swivel castor:

- ✓ rubber is non-marking and leaves no marks on the floor
- ✓ reduces the transmission of both vibration and noise
- ✓ and outdoor use

## LIV SYSTEMS standard Swivel castor + grey rubber tyre Ø80 x W30mm for 65kg Prod ID: 39455

ID 39455: Castor overall height 106 mm | 4 mounting holes with distance #50 mm | Wheel with plain bearing and grey rubber tyre with hardness 83 ° Shore A | Elegant trip, Grey rubber is non-marking and leaves no marks on the floor, rubber reduces the trans

## Product information

- Article code 2-972 ISO
- SKU 39455
- EAN 3838461394553



## Product description

standard Swivel castor with an overall height of 106 mm

Wheel diameter x width: 80 x 30 mm

Top plate with 4 mounting holes of #5 mm, mounting hole distance #50 mm and top plate outer dimensions: 70 mm

Wheel with roller bearing and grey rubber tyre with hardness 83 ° Shore A on polypropylene.

### Approved and tested load capacity

Dynamic 65 kg

Static 80 kg

### Temperature range:

Continuous operation: -20 | +70°C

Short (10 min) exposure: -30 | +80°C

### Advantages of this Elegant trip Swivel castor:

- ✓ rubber is non-marking and leaves no marks on the floor
- ✓ reduces the transmission of both vibration and noise
- ✓ and outdoor use

## LIV SYSTEMS standard Swivel castor + grey rubber tyre Ø80 x W30mm for 65kg Prod ID: 39454

ID 39454: Castor overall height 106 mm | 4 mounting holes with distance #50 mm | Wheel with roller bearing and grey rubber tyre with hardness 83 ° Shore A | Elegant trip, Grey rubber is non-marking and leaves no marks on the floor, rubber reduces the tran

## Product information

- Article code 2-965 ISO
- SKU 39454
- EAN 3838461394546



## Product description

standard Swivel castor with brake with an overall height of 106 mm

Wheel diameter x width: 80 x 30 mm

Top plate with 4 mounting holes of 4 mm, mounting hole distance 40 mm and top plate outer dimensions: 70 mm

Wheel with plain bearing and grey rubber tyre with hardness 83 ° Shore A on polypropylene the double brake system, brakes the turning of the wheel and the swivel rotation.

### Approved and tested load capacity

Dynamic 65 kg

Static 80 kg

### Temperature range:

Continuous operation: -20 | +70°C

Short (10 min) exposure: -30 | +80°C

### Advantages of this Elegant trip Swivel castor with brake:

- ✓ rubber is non-marking and leaves no marks on the floor
- ✓ reduces the transmission of both vibration and noise
- ✓ and outdoor use

## LIV SYSTEMS standard Swivel castor with brake + grey rubber tyre Ø80 x W30mm for 65kg Prod ID: 39504

ID 39504: Castor overall height 106 mm | 4 mounting holes with distance 40 mm | Wheel with plain bearing and grey rubber tyre with hardness 83 ° Shore A | The double brake system, brakes the turning of the wheel and the swivel rotation. | Elegant trip, G

## Product information

- Article code 2-986 ISO
- SKU 39504
- EAN 3838461395048



## Product description

standard Swivel castor with brake with an overall height of 106 mm

Wheel diameter x width: 80 x 30 mm

Top plate with 4 mounting holes of 4 mm, mounting hole distance 40 mm and top plate outer dimensions: 70 mm

Wheel with roller bearing and grey rubber tyre with hardness 83 ° Shore A on polypropylene the double brake system, brakes the turning of the wheel and the swivel rotation.

### Approved and tested load capacity

Dynamic 65 kg

Static 80 kg

### Temperature range:

Continuous operation: -20 | +70°C

Short (10 min) exposure: -30 | +80°C

### Advantages of this Elegant trip Swivel castor with brake:

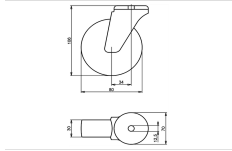
- ✓ rubber is non-marking and leaves no marks on the floor
- ✓ reduces the transmission of both vibration and noise
- ✓ and outdoor use

## LIV SYSTEMS standard Swivel castor with brake + grey rubber tyre Ø80 x W30mm for 65kg Prod ID: 39503

ID 39503: Castor overall height 106 mm | 4 mounting holes with distance 40 mm | Wheel with roller bearing and grey rubber tyre with hardness 83 ° Shore A | The double brake system, brakes the turning of the wheel and the swivel rotation. | Elegant trip,

## Product information

- Article code 2-979 ISO
- SKU 39503
- EAN 3838461395031



## Product description

standard Swivel castor with an overall height of 106 mm

Wheel diameter x width: 80 x 30 mm

Top plate with 4 mounting holes of 12,5 mm, mounting hole distance #\$\$ mm and top plate outer dimensions: 70 mm

Wheel with plain bearing and grey rubber tyre with hardness 83 ° Shore A on polypropylene.

### Approved and tested load capacity

Dynamic 65 kg

Static 80 kg

### Temperature range:

Continious operation: -20 | +70°C

Short (10 min) exposure: -30 | +80°C

### Advantages of this Elegant trip Swivel castor:

- ✓ rubber is non-marking and leaves no marks on the floor
- ✓ reduces the transmission of both vibration and noise
- ✓ and outdoor use

## LIV SYSTEMS standard Swivel castor + grey rubber tyre Ø80 x W30mm for 65kg Prod ID: 39553

ID 39553: Castor overall height 106 mm | 4 mounting holes with distance #\$\$ mm | Wheel with plain bearing and grey rubber tyre with hardness 83 ° Shore A | Elegant trip, Grey rubber is non-marking and leaves no marks on the floor, rubber reduces the trans

## Product information

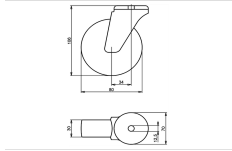
- Article code 2-972 L12
- SKU 39553
- EAN 3838461395536

## Specifications

The result of our quality is maximum performance!

[Close](#)

[Close](#)



## Product description

standard Swivel castor with an overall height of 106 mm

Wheel diameter x width: 80 x 30 mm

Top plate with 4 mounting holes of 12,5 mm, mounting hole distance #\$\$% mm and top plate outer dimensions: 70 mm

Wheel with roller bearing and grey rubber tyre with hardness 83 ° Shore A on polypropylene.

### Approved and tested load capacity

Dynamic 65 kg

Static 80 kg

### Temperature range:

Continuous operation: -20 | +70°C

Short (10 min) exposure: -30 | +80°C

### Advantages of this Elegant trip Swivel castor:

- ✓ rubber is non-marking and leaves no marks on the floor
- ✓ reduces the transmission of both vibration and noise
- ✓ and outdoor use

## LIV SYSTEMS standard Swivel castor + grey rubber tyre Ø80 x W30mm for 65kg Prod ID: 39545

ID 39545: Castor overall height 106 mm | 4 mounting holes with distance #\$\$% mm | Wheel with roller bearing and grey rubber tyre with hardness 83 ° Shore A | Elegant trip, Grey rubber is non-marking and leaves no marks on the floor, rubber reduces the tran

## Product information

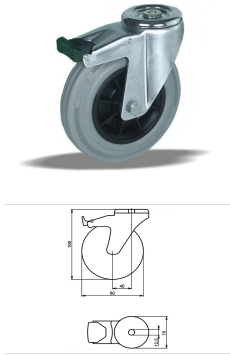
- Article code 2-965 L12
- SKU 39545
- EAN 3838461395451

## Specifications

The result of our quality is maximum performance!

[Close](#)

[Close](#)



## Product description

standard Swivel castor with brake with an overall height of 106 mm  
 Wheel diameter x width: 80 x 30 mm  
 Top plate with 4 mounting holes of 12,5 mm, mounting hole distance #\$\$ mm and top plate outer dimensions: 70 mm  
 Wheel with plain bearing and grey rubber tyre with hardness 83 ° Shore A on polypropylene  
 the double brake system, brakes the turning of the wheel and the swivel rotation.

### Approved and tested load capacity

Dynamic 65 kg  
 Static 80 kg

### Temperature range:

Continuous operation: -20 | +70°C  
 Short (10 min) exposure: -30 | +80°C

### Advantages of this Elegant trip Swivel castor with brake:

- ✓ rubber is non-marking and leaves no marks on the floor
- ✓ reduces the transmission of both vibration and noise
- ✓ and outdoor use

## LIV SYSTEMS standard Swivel castor with brake + grey rubber tyre Ø80 x W30mm for 65kg Prod ID: 39593

ID 39593: Castor overall height 106 mm | 4 mounting holes with distance #\$\$ mm | Wheel with plain bearing and grey rubber tyre with hardness 83 ° Shore A | The double brake system, brakes the turning of the wheel and the swivel rotation. | Elegant trip, G

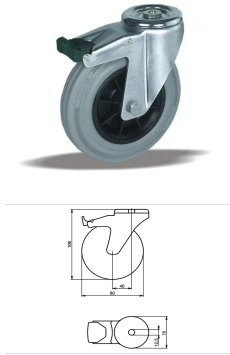
## Product information

- Article code 2-986 L12
- SKU 39593
- EAN 3838461395932

## Specifications

The result of our quality is maximum performance!

[Close](#)  
[Close](#)



## Product description

standard Swivel castor with brake with an overall height of 106 mm  
 Wheel diameter x width: 80 x 30 mm  
 Top plate with 4 mounting holes of 12,5 mm, mounting hole distance #\$\$ mm and top plate outer dimensions: 70 mm  
 Wheel with roller bearing and grey rubber tyre with hardness 83 ° Shore A on polypropylene  
 the double brake system, brakes the turning of the wheel and the swivel rotation.

### Approved and tested load capacity

Dynamic 65 kg  
 Static 80 kg

### Temperature range:

Continious operation: -20 | +70°C  
 Short (10 min) exposure: -30 | +80°C

### Advantages of this Elegant trip Swivel castor with brake:

- ✓ rubber is non-marking and leaves no marks on the floor
- ✓ reduces the transmission of both vibration and noise
- ✓ and outdoor use

## LIV SYSTEMS standard Swivel castor with brake + grey rubber tyre Ø80 x W30mm for 65kg Prod ID: 39585

ID 39585: Castor overall height 106 mm | 4 mounting holes with distance #\$\$ mm | Wheel with roller bearing and grey rubber tyre with hardness 83 ° Shore A | The double brake system, brakes the turning of the wheel and the swivel rotation. | Elegant trip,

## Product information

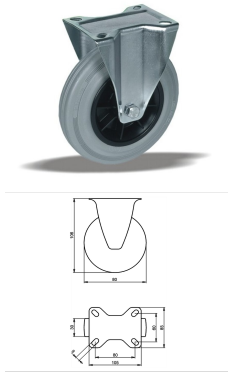
- Article code 2-979 L12
- SKU 39585
- EAN 3838461395857

## Specifications

The result of our quality is maximum performance!

[Close](#)  
[Close](#)





## Product description

standard Fixed castor with an overall height of 106 mm

Wheel diameter x width: 80 x 30 mm

Top plate with 4 mounting holes of 9 mm, mounting hole distance 80x60 mm and top plate outer dimensions: 105x85 mm

Wheel with plain bearing and grey rubber tyre with hardness 83 ° Shore A on polypropylene.

### Approved and tested load capacity

Dynamic 65 kg

Static 80 kg

### Temperature range:

Continuous operation: -20 | +70°C

Short (10 min) exposure: -30 | +80°C

### Advantages of this Elegant trip Fixed castor:

- ✓ rubber is non-marking and leaves no marks on the floor
- ✓ reduces the transmission of both vibration and noise
- ✓ and outdoor use

## LIV SYSTEMS standard Fixed castor + grey rubber tyre Ø80 x W30mm for 65kg Prod ID: 39634

ID 39634: Castor overall height 106 mm | 4 mounting holes with distance 80x60 mm | Wheel with plain bearing and grey rubber tyre with hardness 83 ° Shore A | Elegant trip, Grey rubber is non-marking and leaves no marks on the floor, rubber reduces the tra

## Product information

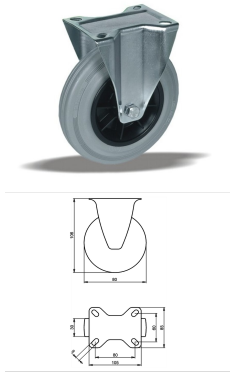
- Article code 2-958 ISO
- SKU 39634
- EAN 3838461396342

## Specifications

The result of our quality is maximum performance!

[Close](#)

[Close](#)



## Product description

standard Fixed castor with an overall height of 106 mm

Wheel diameter x width: 80 x 30 mm

Top plate with 4 mounting holes of 9 mm, mounting hole distance 80x60 mm and top plate outer dimensions: 105x85 mm

Wheel with roller bearing and grey rubber tyre with hardness 83 ° Shore A on polypropylene.

### Approved and tested load capacity

Dynamic 65 kg

Static 80 kg

### Temperature range:

Continuous operation: -20 | +70°C

Short (10 min) exposure: -30 | +80°C

### Advantages of this Elegant trip Fixed castor:

- ✓ rubber is non-marking and leaves no marks on the floor
- ✓ reduces the transmission of both vibration and noise
- ✓ and outdoor use

## LIV SYSTEMS standard Fixed castor + grey rubber tyre Ø80 x W30mm for 65kg Prod ID: 39633

ID 39633: Castor overall height 106 mm | 4 mounting holes with distance 80x60 mm | Wheel with roller bearing and grey rubber tyre with hardness 83 ° Shore A | Elegant trip, Grey rubber is non-marking and leaves no marks on the floor, rubber reduces the tr

## Product information

- Article code 2-951 ISO
- SKU 39633
- EAN 3838461396335

## Specifications

The result of our quality is maximum performance!

[Close](#)

[Close](#)



## Product description

standard Wheel with plain bearing and black rubber tyre with hardness 80 ° Shore A on polypropylene

Wheel diameter x width: 80 x 30 mm

Axle hole: 12 mm

Hub length: 44 mm

### Approved and tested load capacity

Dynamic 65 kg

Static 80 kg

### Temperature range:

Continous operation: -20 | +70°C

Short (10 min) exposure: -30 | +80°C

### Advantages of this Smooth drive wheel wheel:

- ✓ wet floor
- ✓ reduces the transmission of both vibration and noise
- ✓ with low obstacles

## LIV SYSTEMS standard transport wheel + black rubber tyre Ø80 x W30mm for 65kg Prod ID: 30205

ID 30205: standard Wheel with plain bearing and black rubber tyre with hardness 80 ° Shore A on polypropylene | Axle hole: 12 mm | Hub length: 44 mm | Smooth drive wheel, for wet floor, rubber reduces the transmission of both vibration and noise, perfect w

## Product information

- Article code 2-942 ISO
- SKU 30205
- EAN 3838461302053



## Product description

standard Wheel with roller bearing and black rubber tyre with hardness 80 ° Shore A on polypropylene

Wheel diameter x width: 80 x 30 mm

Axle hole: 12 mm

Hub length: 44 mm

### Approved and tested load capacity

Dynamic 65 kg

Static 80 kg

### Temperature range:

Continous operation: -20 | +70°C

Short (10 min) exposure: -30 | +80°C

### Advantages of this Smooth drive wheel wheel:

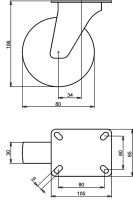
- ✓ wet floor
- ✓ reduces the transmission of both vibration and noise
- ✓ with low obstacles

## LIV SYSTEMS standard transport wheel + black rubber tyre Ø80 x W30mm for 65kg Prod ID: 30193

ID 30193:standard Wheel with roller bearing and black rubber tyre with hardness 80 ° Shore A on polypropylene | Axle hole: 12 mm | Hub length: 44 mm | Smooth drive wheel, for wet floor, rubber reduces the transmission of both vibration and noise, perfect

## Product information

- Article code 2-942 A
- SKU 30193
- EAN 3838461301933



## Product description

standard Swivel transport castor with an overall height of 106 mm

Wheel diameter x width: 80 x 30 mm

Top plate with 4 mounting holes of 9 mm, mounting hole distance 80x60 mm and top plate outer dimensions: 105x85 mm

Wheel with plain bearing and black rubber tyre with hardness 80 ° Shore A on polypropylene.

### Approved and tested load capacity

Dynamic 65 kg

Static 80 kg

### Temperature range:

Continuous operation: -20 | +70°C

Short (10 min) exposure: -30 | +80°C

### Advantages of this Smooth drive wheel Swivel transport castor:

- ✓ wet floor
- ✓ reduces the transmission of both vibration and noise
- ✓ with low obstacles

## LIV SYSTEMS standard Swivel transport castor + black rubber tyre Ø80 x W30mm for 65kg Prod ID: 31113

ID 31113: Castor overall height 106 mm | 4 mounting holes with distance 80x60 mm | Wheel with plain bearing and black rubber tyre with hardness 80 ° Shore A | Smooth drive wheel, for wet floor, rubber reduces the transmission of both vibration and noise,

## Product information

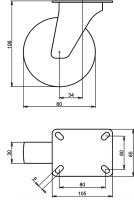
- Article code 2-921 ISO
- SKU 31113
- EAN 3838461311130

## Specifications

The result of our quality is maximum performance!

[Close](#)

[Close](#)



## Product description

standard Swivel transport castor with an overall height of 106 mm

Wheel diameter x width: 80 x 30 mm

Top plate with 4 mounting holes of 9 mm, mounting hole distance 80x60 mm and top plate outer dimensions: 105x85 mm

Wheel with roller bearing and black rubber tyre with hardness 80 ° Shore A on polypropylene.

### Approved and tested load capacity

Dynamic 65 kg

Static 80 kg

### Temperature range:

Continuous operation: -20 | +70°C

Short (10 min) exposure: -30 | +80°C

### Advantages of this Smooth drive wheel Swivel transport castor:

- ✓ wet floor
- ✓ reduces the transmission of both vibration and noise
- ✓ with low obstacles

## LIV SYSTEMS standard Swivel transport castor + black rubber tyre Ø80 x W30mm for 65kg Prod ID: 31105

ID 31105: Castor overall height 106 mm | 4 mounting holes with distance 80x60 mm | Wheel with roller bearing and black rubber tyre with hardness 80 ° Shore A | Smooth drive wheel, for wet floor, rubber reduces the transmission of both vibration and noise,

## Product information

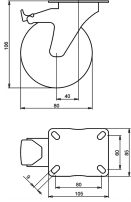
- Article code 2-914 ISO
- SKU 31105
- EAN 3838461311055

## Specifications

The result of our quality is maximum performance!

[Close](#)

[Close](#)



## Product description

standard Swivel transport castor with brake with an overall height of 106 mm

Wheel diameter x width: 80 x 30 mm

Top plate with 4 mounting holes of 9 mm, mounting hole distance 80x60 mm and top plate outer dimensions: 105x85 mm

Wheel with plain bearing and black rubber tyre with hardness 80 ° Shore A on polypropylene

the double brake system, brakes the turning of the wheel and the swivel rotation.

### Approved and tested load capacity

Dynamic 65 kg

Static 80 kg

### Temperature range:

Continuous operation: -20 | +70°C

Short (10 min) exposure: -30 | +80°C

### Advantages of this Smooth drive wheel Swivel transport castor with brake:

- ✓ wet floor
- ✓ reduces the transmission of both vibration and noise
- ✓ with low obstacles

## LIV SYSTEMS standard Swivel transport castor with brake + black rubber tyre Ø80 x W30mm for 65kg Prod ID: 31194

ID 31194: Castor overall height 106 mm | 4 mounting holes with distance 80x60 mm | Wheel with plain bearing and black rubber tyre with hardness 80 ° Shore A | The double brake system, brakes the turning of the wheel and the swivel rotation. | Smooth drive

## Product information

- Article code 2-935 ISO
- SKU 31194
- EAN 3838461311949

## Specifications

The result of our quality is maximum performance!

[Close](#)

[Close](#)



## Product description

standard Swivel transport castor with an overall height of 106 mm

Wheel diameter x width: 80 x 30 mm

Top plate with 4 mounting holes of #\$\$ mm, mounting hole distance #\$\$ mm and top plate outer dimensions: 70 mm

Wheel with plain bearing and black rubber tyre with hardness 80 ° Shore A on polypropylene.

### Approved and tested load capacity

Dynamic 65 kg

Static 80 kg

### Temperature range:

Continuous operation: -20 | +70°C

Short (10 min) exposure: -30 | +80°C

### Advantages of this Smooth drive wheel Swivel transport castor:

- ✓ wet floor
- ✓ reduces the transmission of both vibration and noise
- ✓ with low obstacles

## LIV SYSTEMS standard Swivel transport castor + black rubber tyre Ø80 x W30mm for 65kg Prod ID: 31244

ID 31244: Castor overall height 106 mm | 4 mounting holes with distance #\$\$ mm | Wheel with plain bearing and black rubber tyre with hardness 80 ° Shore A | Smooth drive wheel, for wet floor, rubber reduces the transmission of both vibration and noise, pe

## Product information

- Article code 2-972 ISO
- SKU 31244
- EAN 3838461312441





## Product description

standard Swivel transport castor with an overall height of 106 mm

Wheel diameter x width: 80 x 30 mm

Top plate with 4 mounting holes of #\$\$ mm, mounting hole distance #\$\$ mm and top plate outer dimensions: 70 mm

Wheel with roller bearing and black rubber tyre with hardness 80 ° Shore A on polypropylene.

### Approved and tested load capacity

Dynamic 65 kg

Static 80 kg

### Temperature range:

Continuous operation: -20 | +70°C

Short (10 min) exposure: -30 | +80°C

### Advantages of this Smooth drive wheel Swivel transport castor:

- ✓ wet floor
- ✓ reduces the transmission of both vibration and noise
- ✓ with low obstacles

## LIV SYSTEMS standard Swivel transport castor + black rubber tyre Ø80 x W30mm for 65kg Prod ID: 31235

ID 31235: Castor overall height 106 mm | 4 mounting holes with distance #\$\$ mm | Wheel with roller bearing and black rubber tyre with hardness 80 ° Shore A | Smooth drive wheel, for wet floor, rubber reduces the transmission of both vibration and noise, p

## Product information

- Article code 2-965 ISO
- SKU 31235
- EAN 3838461312359



## Product description

standard Swivel transport castor with brake with an overall height of 106 mm

Wheel diameter x width: 80 x 30 mm

Top plate with 4 mounting holes of #\$\$ mm, mounting hole distance #\$\$ mm and top plate outer dimensions: 70 mm

Wheel with roller bearing and black rubber tyre with hardness 80 ° Shore A on polypropylene the double brake system, brakes the turning of the wheel and the swivel rotation.

### Approved and tested load capacity

Dynamic 65 kg

Static 80 kg

### Temperature range:

Continuous operation: -20 | +70°C

Short (10 min) exposure: -30 | +80°C


### Advantages of this Smooth drive wheel Swivel transport castor with brake:

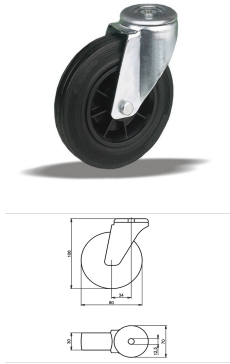
- ✓ wet floor
- ✓ reduces the transmission of both vibration and noise
- ✓ with low obstacles

## LIV SYSTEMS standard Swivel transport castor with brake + black rubber tyre Ø80 x W30mm for 65kg Prod ID: 31334

ID 31334: Castor overall height 106 mm | 4 mounting holes with distance #\$\$ mm | Wheel with roller bearing and black rubber tyre with hardness 80 ° Shore A | The double brake system, brakes the turning of the wheel and the swivel rotation. | Smooth drive

## Product information

- 
- Article code 2-979 ISO
  - SKU 31334
  - EAN 3838461313349



## Product description

standard Swivel transport castor with an overall height of 106 mm

Wheel diameter x width: 80 x 30 mm

Top plate with 4 mounting holes of 12,5 mm, mounting hole distance #\$\$ mm and top plate outer dimensions: 70 mm

Wheel with plain bearing and black rubber tyre with hardness 80 ° Shore A on polypropylene.

### Approved and tested load capacity

Dynamic 65 kg

Static 80 kg

### Temperature range:

Continious operation: -20 | +70°C

Short (10 min) exposure: -30 | +80°C

### Advantages of this Smooth drive wheel Swivel transport castor:

- ✓ wet floor
- ✓ reduces the transmission of both vibration and noise
- ✓ with low obstacles

## LIV SYSTEMS standard Swivel transport castor + black rubber tyre Ø80 x W30mm for 65kg Prod ID: 34125

ID 34125: Castor overall height 106 mm | 4 mounting holes with distance #\$\$ mm | Wheel with plain bearing and black rubber tyre with hardness 80 ° Shore A | Smooth drive wheel, for wet floor, rubber reduces the transmission of both vibration and noise, pe

## Product information

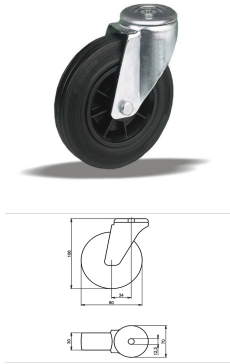
- Article code 2-972 L12
- SKU 34125
- EAN 3838461341250

## Specifications

The result of our quality is maximum performance!

[Close](#)

[Close](#)



## Product description

standard Swivel transport castor with an overall height of 106 mm

Wheel diameter x width: 80 x 30 mm

Top plate with 4 mounting holes of 12,5 mm, mounting hole distance #\$\$ mm and top plate outer dimensions: 70 mm

Wheel with roller bearing and black rubber tyre with hardness 80 ° Shore A on polypropylene.

### Approved and tested load capacity

Dynamic 65 kg

Static 80 kg

### Temperature range:

Continous operation: -20 | +70°C

Short (10 min) exposure: -30 | +80°C

### Advantages of this Smooth drive wheel Swivel transport castor:

- ✓ wet floor
- ✓ reduces the transmission of both vibration and noise
- ✓ with low obstacles

## LIV SYSTEMS standard Swivel transport castor + black rubber tyre Ø80 x W30mm for 65kg Prod ID: 34123

ID 34123: Castor overall height 106 mm | 4 mounting holes with distance #\$\$ mm | Wheel with roller bearing and black rubber tyre with hardness 80 ° Shore A | Smooth drive wheel, for wet floor, rubber reduces the transmission of both vibration and noise, p

## Product information

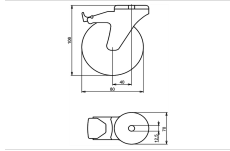
- Article code 2-965 L12
- SKU 34123
- EAN 3838461341236

## Specifications

The result of our quality is maximum performance!

[Close](#)

[Close](#)



## Product description

standard Swivel transport castor with brake with an overall height of 106 mm

Wheel diameter x width: 80 x 30 mm

Top plate with 4 mounting holes of 12,5 mm, mounting hole distance #\$\$ mm and top plate outer dimensions: 70 mm

Wheel with plain bearing and black rubber tyre with hardness 80 ° Shore A on polypropylene

the double brake system, brakes the turning of the wheel and the swivel rotation.

### Approved and tested load capacity

Dynamic 65 kg

Static 80 kg

### Temperature range:

Continious operation: -20 | +70°C

Short (10 min) exposure: -30 | +80°C

### Advantages of this Smooth drive wheel Swivel transport castor with brake:

- ✓ wet floor
- ✓ reduces the transmission of both vibration and noise
- ✓ with low obstacles

## LIV SYSTEMS standard Swivel transport castor with brake + black rubber tyre Ø80 x W30mm for 65kg Prod ID: 34203

ID 34203: Castor overall height 106 mm | 4 mounting holes with distance #\$\$ mm | Wheel with plain bearing and black rubber tyre with hardness 80 ° Shore A | The double brake system, brakes the turning of the wheel and the swivel rotation. | Smooth drive w

## Product information

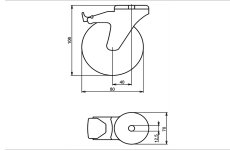
- Article code 2-986 L1
- SKU 34203
- EAN 3838461342035

## Specifications

The result of our quality is maximum performance!

[Close](#)

[Close](#)



## Product description

standard Swivel transport castor with brake with an overall height of 106 mm

Wheel diameter x width: 80 x 30 mm

Top plate with 4 mounting holes of 12,5 mm, mounting hole distance #\$\$ mm and top plate outer dimensions: 70 mm

Wheel with roller bearing and black rubber tyre with hardness 80 ° Shore A on polypropylene

the double brake system, brakes the turning of the wheel and the swivel rotation.

### Approved and tested load capacity

Dynamic 65 kg

Static 80 kg

### Temperature range:

Continious operation: -20 | +70°C

Short (10 min) exposure: -30 | +80°C

### Advantages of this Smooth drive wheel Swivel transport castor with brake:

- ✓ wet floor
- ✓ reduces the transmission of both vibration and noise
- ✓ with low obstacles

## LIV SYSTEMS standard Swivel transport castor with brake + black rubber tyre Ø80 x W30mm for 65kg Prod ID: 34195

ID 34195: Castor overall height 106 mm | 4 mounting holes with distance #\$\$ mm | Wheel with roller bearing and black rubber tyre with hardness 80 ° Shore A | The double brake system, brakes the turning of the wheel and the swivel rotation. | Smooth drive

## Product information

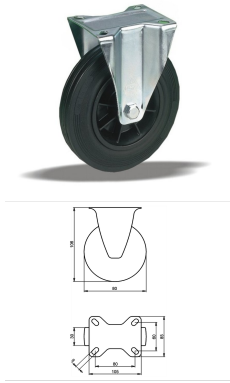
- Article code 2-979 L12
- SKU 34195
- EAN 3838461341953

## Specifications

The result of our quality is maximum performance!

[Close](#)

[Close](#)



## Product description

standard fixed transport castor with an overall height of 106 mm

Wheel diameter x width: 80 x 30 mm

Top plate with 4 mounting holes of 9 mm, mounting hole distance 80x60 mm and top plate outer dimensions: 105x85 mm

Wheel with plain bearing and black rubber tyre with hardness 80 ° Shore A on polypropylene.

### Approved and tested load capacity

Dynamic 65 kg

Static 80 kg

### Temperature range:

Continuous operation: -20 | +70°C

Short (10 min) exposure: -30 | +80°C

### Advantages of this Smooth drive wheel fixed transport castor:

- ✓ wet floor
- ✓ reduces the transmission of both vibration and noise
- ✓ with low obstacles

## LIV SYSTEMS standard fixed transport castor + black rubber tyre Ø80 x W30mm for 65kg Prod ID: 31474

ID 31474: Castor overall height 106 mm | 4 mounting holes with distance 80x60 mm | Wheel with plain bearing and black rubber tyre with hardness 80 ° Shore A | Smooth drive wheel, for wet floor, rubber reduces the transmission of both vibration and noise,

## Product information

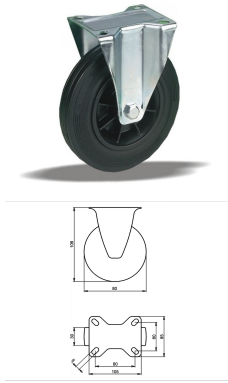
- Article code 2-958 ISO
- SKU 31474
- EAN 3838461314742

## Specifications

The result of our quality is maximum performance!

[Close](#)

[Close](#)



## Product description

standard fixed transport castor with an overall height of 106 mm

Wheel diameter x width: 80 x 30 mm

Top plate with 4 mounting holes of 9 mm, mounting hole distance 80x60 mm and top plate outer dimensions: 105x85 mm

Wheel with roller bearing and black rubber tyre with hardness 80 ° Shore A on polypropylene.

### Approved and tested load capacity

Dynamic 65 kg

Static 80 kg

### Temperature range:

Continuous operation: -20 | +70°C

Short (10 min) exposure: -30 | +80°C

### Advantages of this Smooth drive wheel fixed transport castor:

- ✓ wet floor
- ✓ reduces the transmission of both vibration and noise
- ✓ with low obstacles

## LIV SYSTEMS standard fixed transport castor + black rubber tyre Ø80 x W30mm for 65kg Prod ID: 31473

ID 31473: Castor overall height 106 mm | 4 mounting holes with distance 80x60 mm | Wheel with roller bearing and black rubber tyre with hardness 80 ° Shore A | Smooth drive wheel, for wet floor, rubber reduces the transmission of both vibration and noise,

## Product information

- Article code 2-951 ISO
- SKU 31473
- EAN 3838461314735

## Specifications

The result of our quality is maximum performance!

[Close](#)

[Close](#)





## Product description

standard Wheel with plain bearing and black rubber tyre with hardness 80 ° Shore A on steel rim with electrogalvanization zinc plating anti-corrosion protection Cr6-free

Wheel diameter x width: 80 x 30 mm

Axle hole: 12 mm

Hub length: 44 mm

### Approved and tested load capacity

Dynamic 65 kg

Static 80 kg

### Temperature range:

Continuous operation: -20 | +70°C

Short (10 min) exposure: -30 | +80°C

### Advantages of this Comfortable drive wheel:

- ✓ to manoeuvre
- ✓ performance on uneven floor or obstacles
- ✓ and strong wheel systems

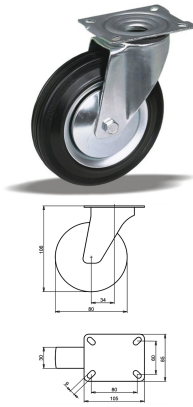
## LIV SYSTEMS standard transport wheel + black rubber tyre Ø80 x W30mm for 65kg Prod ID: 62371

ID 62371: standard Wheel with plain bearing and black rubber tyre with hardness 80 ° Shore A on steel rim with electrogalvanization zinc plating anti-corrosion protection Cr6-free | Axle hole: 12 mm | Hub length: 44 mm |

Comfortable drive, easy to manoeuvre

## Product information

- Article code 2-114 ISO
- SKU 62371
- EAN 3838461623714



## Product description

standard Swivel transport castor with an overall height of 106 mm

Wheel diameter x width: 80 x 30 mm

Top plate with 4 mounting holes of 9 mm, mounting hole distance 80x60 mm and top plate outer dimensions: 105x85 mm

Wheel with plain bearing and black rubber tyre with hardness 80 ° Shore A on steel rim with electrogalvanization zinc plating anti-corrosion protection Cr6-free.

### Approved and tested load capacity

Dynamic 65 kg

Static 80 kg

### Temperature range:

Continuous operation: -20 | +70°C

Short (10 min) exposure: -30 | +80°C

### Advantages of this Comfortable drive Swivel transport castor:

- ✓ to manoeuvre
- ✓ performance on uneven floor or obstacles
- ✓ and strong wheel systems

## LIV SYSTEMS standard Swivel transport castor + black rubber tyre Ø80 x W30mm for 65kg Prod ID: 62389

ID 62389: Castor overall height 106 mm | 4 mounting holes with distance 80x60 mm | Wheel with plain bearing and black rubber tyre with hardness 80 ° Shore A | Comfortable drive, easy to manoeuvre, good performance on uneven floor or obstacles, robust and

## Product information

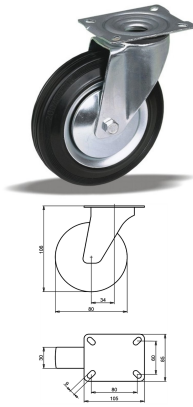
- Article code 2-115 ISO
- SKU 62389
- EAN 3838461623899

## Specifications

The result of our quality is maximum performance!

[Close](#)

[Close](#)



## Product description

standard Swivel transport castor with an overall height of 106 mm

Wheel diameter x width: 80 x 30 mm

Top plate with 4 mounting holes of 9 mm, mounting hole distance 80x60 mm and top plate outer dimensions: 105x85 mm

Wheel with roller bearing and black rubber tyre with hardness 80 ° Shore A on steel rim with electrogalvanization zinc plating anti-corrosion protection Cr6-free.

### Approved and tested load capacity

Dynamic 65 kg

Static 80 kg

### Temperature range:

Continuous operation: -20 | +70°C

Short (10 min) exposure: -30 | +80°C

### Advantages of this Comfortable drive Swivel transport castor:

- ✓ to manoeuvre
- ✓ performance on uneven floor or obstacles
- ✓ and strong wheel systems

## LIV SYSTEMS standard Swivel transport castor + black rubber tyre Ø80 x W30mm for 65kg Prod ID: 59317

ID 59317: Castor overall height 106 mm | 4 mounting holes with distance 80x60 mm | Wheel with roller bearing and black rubber tyre with hardness 80 ° Shore A |

Comfortable drive, easy to manoeuvre, good performance on uneven floor or obstacles, robust and

## Product information

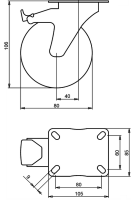
- Article code 2-585 ISO
- SKU 59317
- EAN 3838461593178

## Specifications

The result of our quality is maximum performance!

[Close](#)

[Close](#)



## Product description

standard Swivel transport castor with brake with an overall height of 106 mm

Wheel diameter x width: 80 x 30 mm

Top plate with 4 mounting holes of 9 mm, mounting hole distance 80x60 mm and top plate outer dimensions: 105X85 mm

Wheel with plain bearing and black rubber tyre with hardness 80 ° Shore A on steel rim with electrogalvanization zinc plating anti-corrosion protection Cr6-free the double brake system, brakes the turning of the wheel and the swivel rotation.

### Approved and tested load capacity

Dynamic 65 kg

Static 80 kg

### Temperature range:

Continuous operation: -20 | +70°C

Short (10 min) exposure: -30 | +80°C

### Advantages of this Comfortable drive Swivel transport castor with brake:

- ✓ to manoeuvre
- ✓ performance on uneven floor or obstacles
- ✓ and strong wheel systems

## LIV SYSTEMS standard Swivel transport castor with brake + black rubber tyre Ø80 x W30mm for 65kg Prod ID: 30294

ID 30294: Castor overall height 106 mm | 4 mounting holes with distance 80x60 mm | Wheel with plain bearing and black rubber tyre with hardness 80 ° Shore A | The double brake system, brakes the turning of the wheel and the swivel rotation. | Comfortable

## Product information

- Article code 2-621 A
- SKU 30294
- EAN 3838461302947

## Specifications

The result of our quality is maximum performance!

[Close](#)

[Close](#)



## Product description

standard Swivel transport castor with an overall height of 106 mm

Wheel diameter x width: 80 x 30 mm

Top plate with 4 mounting holes of 4 mm, mounting hole distance 40 mm and top plate outer dimensions: 70 mm

Wheel with plain bearing and black rubber tyre with hardness 80 ° Shore A on steel rim with electrogalvanization zinc plating anti-corrosion protection Cr6-free.

### Approved and tested load capacity

Dynamic 65 kg

Static 80 kg

### Temperature range:

Continuous operation: -20 | +70°C

Short (10 min) exposure: -30 | +80°C


### Advantages of this Comfortable drive Swivel transport castor:

- ✓ to manoeuvre
- ✓ performance on uneven floor or obstacles
- ✓ and strong wheel systems

## LIV SYSTEMS standard Swivel transport castor + black rubber tyre Ø80 x W30mm for 65kg Prod ID: 65132

ID 65132: Castor overall height 106 mm | 4 mounting holes with distance 40 mm | Wheel with plain bearing and black rubber tyre with hardness 80 ° Shore A | Comfortable drive, easy to manoeuvre, good performance on uneven floor or obstacles, robust and st

## Product information

- 
- Article code 2-184
  - SKU 65132
  - EAN 3838461651328



## Product description

standard Swivel transport castor with an overall height of 106 mm

Wheel diameter x width: 80 x 30 mm

Top plate with 4 mounting holes of #\$\$ mm, mounting hole distance #\$\$ mm and top plate outer dimensions: 70 mm

Wheel with roller bearing and black rubber tyre with hardness 80 ° Shore A on steel rim with electrogalvanization zinc plating anti-corrosion protection Cr6-free.

### Approved and tested load capacity

Dynamic 65 kg

Static 80 kg

### Temperature range:

Continuous operation: -20 | +70°C

Short (10 min) exposure: -30 | +80°C


### Advantages of this Comfortable drive Swivel transport castor:

- ✓ to manoeuvre
- ✓ performance on uneven floor or obstacles
- ✓ and strong wheel systems

## LIV SYSTEMS standard Swivel transport castor + black rubber tyre Ø80 x W30mm for 65kg Prod ID: 65130

ID 65130: Castor overall height 106 mm | 4 mounting holes with distance #\$\$ mm | Wheel with roller bearing and black rubber tyre with hardness 80 ° Shore A | Comfortable drive, easy to manoeuvre, good performance on uneven floor or obstacles, robust and s

## Product information

- 
- Article code 2-628
  - SKU 65130
  - EAN 3838461651304



## Product description

standard Swivel transport castor with brake with an overall height of 106 mm

Wheel diameter x width: 80 x 30 mm

Top plate with 4 mounting holes of #5 mm, mounting hole distance #50 mm and top plate outer dimensions: 70 mm

Wheel with plain bearing and black rubber tyre with hardness 80 ° Shore A on steel rim with electrogalvanization zinc plating anti-corrosion protection Cr6-free

the double brake system, brakes the turning of the wheel and the swivel rotation.

### Approved and tested load capacity

Dynamic 65 kg

Static 80 kg

### Temperature range:

Continuous operation: -20 | +70°C

Short (10 min) exposure: -30 | +80°C

### Advantages of this Comfortable drive Swivel transport castor with brake:

- ✓ to manoeuvre
- ✓ performance on uneven floor or obstacles
- ✓ and strong wheel systems

## LIV SYSTEMS standard Swivel transport castor with brake + black rubber tyre Ø80 x W30mm for 65kg Prod ID: 30355

ID 30355: Castor overall height 106 mm | 4 mounting holes with distance #50 mm | Wheel with plain bearing and black rubber tyre with hardness 80 ° Shore A | The double brake system, brakes the turning of the wheel and the swivel rotation. | Comfortable dr

## Product information



- Article code 2-594 A
- SKU 30355
- EAN 3838461303555



## Product description

standard Swivel transport castor with brake with an overall height of 106 mm

Wheel diameter x width: 80 x 30 mm

Top plate with 4 mounting holes of #5 mm, mounting hole distance #50 mm and top plate outer dimensions: 70 mm

Wheel with roller bearing and black rubber tyre with hardness 80 ° Shore A on steel rim with electrogalvanization zinc plating anti-corrosion protection Cr6-free

the double brake system, brakes the turning of the wheel and the swivel rotation.

### Approved and tested load capacity

Dynamic 65 kg

Static 80 kg

### Temperature range:

Continuous operation: -20 | +70°C

Short (10 min) exposure: -30 | +80°C

### Advantages of this Comfortable drive Swivel transport castor with brake:

- ✓ to manoeuvre
- ✓ performance on uneven floor or obstacles
- ✓ and strong wheel systems

## LIV SYSTEMS standard Swivel transport castor with brake + black rubber tyre Ø80 x W30mm for 65kg Prod ID: 30353

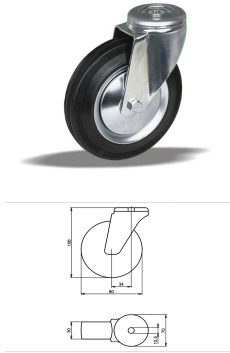
ID 30353: Castor overall height 106 mm | 4 mounting holes with distance #50 mm | Wheel with roller bearing and black rubber tyre with hardness 80 ° Shore A | The double brake system, brakes the turning of the wheel and the swivel rotation. | Comfortable d

## Product information



- Article code 2-606 A
- SKU 30353
- EAN 3838461303531





## Product description

standard Swivel transport castor with an overall height of 106 mm

Wheel diameter x width: 80 x 30 mm

Top plate with 4 mounting holes of 12,5 mm, mounting hole distance #\$\$ mm and top plate outer dimensions: 70 mm

Wheel with roller bearing and black rubber tyre with hardness 80 ° Shore A on steel rim with electrogalvanization zinc plating anti-corrosion protection Cr6-free.

### Approved and tested load capacity

Dynamic 65 kg

Static 80 kg

### Temperature range:

Continuous operation: -20 | +70°C

Short (10 min) exposure: -30 | +80°C

### Advantages of this Comfortable drive Swivel transport castor:

- ✓ to manoeuvre
- ✓ performance on uneven floor or obstacles
- ✓ and strong wheel systems

## LIV SYSTEMS standard Swivel transport castor + black rubber tyre Ø80 x W30mm for 65kg Prod ID: 34005

ID 34005: Castor overall height 106 mm | 4 mounting holes with distance #\$\$ mm | Wheel with roller bearing and black rubber tyre with hardness 80 ° Shore A | Comfortable drive, easy to manoeuvre, good performance on uneven floor or obstacles, robust and s

## Product information

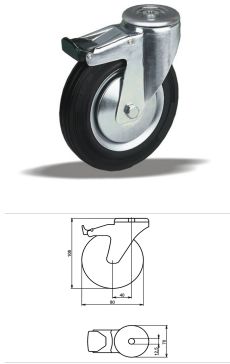
- Article code 2-628 L12
- SKU 34005
- EAN 3838461340055

## Specifications

The result of our quality is maximum performance!

[Close](#)

[Close](#)



## Product description

standard Swivel transport castor with brake with an overall height of 106 mm

Wheel diameter x width: 80 x 30 mm

Top plate with 4 mounting holes of 12,5 mm, mounting hole distance #\$\$ mm and top plate outer dimensions: 70 mm

Wheel with plain bearing and black rubber tyre with hardness 80 ° Shore A on steel rim with electrogalvanization zinc plating anti-corrosion protection Cr6-free the double brake system, brakes the turning of the wheel and the swivel rotation.

### Approved and tested load capacity

Dynamic 65 kg

Static 80 kg

### Temperature range:

Continious operation: -20 | +70°C

Short (10 min) exposure: -30 | +80°C

### Advantages of this Comfortable drive Swivel transport castor with brake:

- ✓ to manoeuvre
- ✓ performance on uneven floor or obstacles
- ✓ and strong wheel systems

## LIV SYSTEMS standard Swivel transport castor with brake + black rubber tyre Ø80 x W30mm for 65kg Prod ID: 34065

ID 34065: Castor overall height 106 mm | 4 mounting holes with distance #\$\$ mm | Wheel with plain bearing and black rubber tyre with hardness 80 ° Shore A | The double brake system, brakes the turning of the wheel and the swivel rotation. | Comfortable dr

## Product information

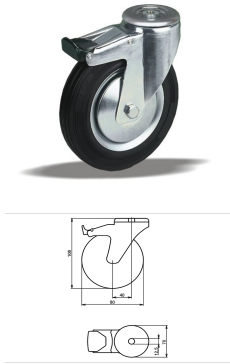
- Article code 2-594 L12
- SKU 34065
- EAN 3838461340659

## Specifications

The result of our quality is maximum performance!

[Close](#)

[Close](#)



## Product description

standard Swivel transport castor with brake with an overall height of 106 mm

Wheel diameter x width: 80 x 30 mm

Top plate with 4 mounting holes of 12,5 mm, mounting hole distance #\$\$ mm and top plate outer dimensions: 70 mm

Wheel with roller bearing and black rubber tyre with hardness 80 ° Shore A on steel rim with electrogalvanization zinc plating anti-corrosion protection Cr6-free the double brake system, brakes the turning of the wheel and the swivel rotation.

### Approved and tested load capacity

Dynamic 65 kg

Static 80 kg

### Temperature range:

Continious operation: -20 | +70°C

Short (10 min) exposure: -30 | +80°C

### Advantages of this Comfortable drive Swivel transport castor with brake:

- ✓ to manoeuvre
- ✓ performance on uneven floor or obstacles
- ✓ and strong wheel systems

## LIV SYSTEMS standard Swivel transport castor with brake + black rubber tyre Ø80 x W30mm for 65kg Prod ID: 34064

ID 34064: Castor overall height 106 mm | 4 mounting holes with distance #\$\$ mm | Wheel with roller bearing and black rubber tyre with hardness 80 ° Shore A | The double brake system, brakes the turning of the wheel and the swivel rotation. | Comfortable d

## Product information

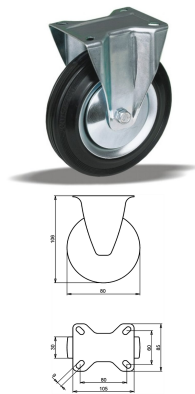
- Article code 2-606 L12
- SKU 34064
- EAN 3838461340642

## Specifications

The result of our quality is maximum performance!

[Close](#)

[Close](#)



## Product description

standard fixed transport castor with an overall height of 106 mm

Wheel diameter x width: 80 x 30 mm

Top plate with 4 mounting holes of 9 mm, mounting hole distance 80x60 mm and top plate outer dimensions: 105x85 mm

Wheel with roller bearing and black rubber tyre with hardness 80 ° Shore A on steel rim with electrogalvanization zinc plating anti-corrosion protection Cr6-free.

### Approved and tested load capacity

Dynamic 65 kg

Static 80 kg

### Temperature range:

Continuous operation: -20 | +70°C

Short (10 min) exposure: -30 | +80°C

### Advantages of this Comfortable drive fixed transport castor:

- ✓ to manoeuvre
- ✓ performance on uneven floor or obstacles
- ✓ and strong wheel systems

## LIV SYSTEMS standard fixed transport castor + black rubber tyre Ø80 x W30mm for 65kg Prod ID: 59320

ID 59320: Castor overall height 106 mm | 4 mounting holes with distance 80x60 mm | Wheel with roller bearing and black rubber tyre with hardness 80 ° Shore A | Comfortable drive, easy to manoeuvre, good performance on uneven floor or obstacles, robust and

## Product information

- Article code 2-588 ISO
- SKU 59320
- EAN 3838461593208

## Specifications

The result of our quality is maximum performance!

**Алматы** (7273)495-231  
**Ангарск** (3955)60-70-56  
**Архангельск** (8182)63-90-72  
**Астрахань** (8512)99-46-04  
**Барнаул** (3852)73-04-60  
**Белгород** (4722)40-23-64  
**Благовещенск** (4162)22-76-07  
**Брянск** (4832)59-03-52  
**Владивосток** (423)249-28-31  
**Владикавказ** (8672)28-90-48  
**Владимир** (4922)49-43-18  
**Волгоград** (844)278-03-48  
**Вологда** (8172)26-41-59  
**Воронеж** (473)204-51-73  
**Екатеринбург** (343)384-55-89

**Иваново** (4932)77-34-06  
**Ижевск** (3412)26-03-58  
**Иркутск** (395)279-98-46  
**Казань** (843)206-01-48  
**Калининград** (4012)72-03-81  
**Калуга** (4842)92-23-67  
**Кемерово** (3842)65-04-62  
**Киров** (8332)68-02-04  
**Коломна** (4966)23-41-49  
**Кострома** (4942)77-07-48  
**Краснодар** (861)203-40-90  
**Красноярск** (391)204-63-61  
**Курск** (4712)77-13-04  
**Курган** (3522)50-90-47  
**Липецк** (4742)52-20-81

**Магнитогорск** (3519)55-03-13  
**Москва** (495)268-04-70  
**Мурманск** (8152)59-64-93  
**Набережные Челны** (8552)20-53-41  
**Нижний Новгород** (831)429-08-12  
**Новокузнецк** (3843)20-46-81  
**Ноябрьск** (3496)41-32-12  
**Новосибирск** (383)227-86-73  
**Омск** (3812)21-46-40  
**Орел** (4862)44-53-42  
**Оренбург** (3532)37-68-04  
**Пенза** (8412)22-31-16  
**Петрозаводск** (8142)55-98-37  
**Псков** (8112)59-10-37  
**Пермь** (342)205-81-47

**Ростов-на-Дону** (863)308-18-15  
**Рязань** (4912)46-61-64  
**Самара** (846)206-03-16  
**Санкт-Петербург** (812)309-46-40  
**Саратов** (845)249-38-78  
**Севастополь** (8692)22-31-93  
**Саранск** (8342)22-96-24  
**Симферополь** (3652)67-13-56  
**Смоленск** (4812)29-41-54  
**Сочи** (862)225-72-31  
**Ставрополь** (8652)20-65-13  
**Сургут** (3462)77-98-35  
**Сыктывкар** (8212)25-95-17  
**Тамбов** (4752)50-40-97  
**Тверь** (4822)63-31-35

**Тольятти** (8482)63-91-07  
**Томск** (3822)98-41-53  
**Тула** (4872)33-79-87  
**Тюмень** (3452)66-21-18  
**Ульяновск** (8422)24-23-59  
**Улан-Удэ** (3012)59-97-51  
**Уфа** (347)229-48-12  
**Хабаровск** (4212)92-98-04  
**Чебоксары** (8352)28-53-07  
**Челябинск** (351)202-03-61  
**Череповец** (8202)49-02-64  
**Чита** (3022)38-34-83  
**Якутск** (4112)23-90-97  
**Ярославль** (4852)69-52-93

Россия +7(495)268-04-70

Казахстан +7(7172)727-132

Киргизия +996(312)96-26-47

<https://liv.nt-rt.ru/> || [vis@nt-rt.ru](mailto:vis@nt-rt.ru)