

Алматы (7273)495-231  
Ангарск (3955)60-70-56  
Архангельск (8182)63-90-72  
Астрахань (8512)99-46-04  
Барнаул (3852)73-04-60  
Белгород (4722)40-23-64  
Благовещенск (4162)22-76-07  
Брянск (4832)59-03-52  
Владивосток (423)249-28-31  
Владикавказ (8672)28-90-48  
Владимир (4922)49-43-18  
Волгоград (844)278-03-48  
Вологда (8172)26-41-59  
Воронеж (473)204-51-73  
Екатеринбург (343)384-55-89

Иваново (4932)77-34-06  
Ижевск (3412)26-03-58  
Иркутск (395)279-98-46  
Казань (843)206-01-48  
Калининград (4012)72-03-81  
Калуга (4842)92-23-67  
Кемерово (3842)65-04-62  
Киров (8332)68-02-04  
Коломна (4966)23-41-49  
Кострома (4942)77-07-48  
Краснодар (861)203-40-90  
Красноярск (391)204-63-61  
Курск (4712)77-13-04  
Курган (3522)50-90-47  
Липецк (4742)52-20-81

Магнитогорск (3519)55-03-13  
Москва (495)268-04-70  
Мурманск (8152)59-64-93  
Набережные Челны (8552)20-53-41  
Нижний Новгород (831)429-08-12  
Новокузнецк (3843)20-46-81  
Ноябрьск (3496)41-32-12  
Новосибирск (383)227-86-73  
Омск (3812)21-46-40  
Орел (4862)44-53-42  
Оренбург (3532)37-68-04  
Пенза (8412)22-31-16  
Петрозаводск (8142)55-98-37  
Псков (8112)59-10-37  
Пермь (342)205-81-47

Ростов-на-Дону (863)308-18-15  
Рязань (4912)46-61-64  
Самара (846)206-03-16  
Санкт-Петербург (812)309-46-40  
Саратов (845)249-38-78  
Севастополь (8692)22-31-93  
Саранск (8342)22-96-24  
Симферополь (3652)67-13-56  
Смоленск (4812)29-41-54  
Сочи (862)225-72-31  
Ставрополь (8652)20-65-13  
Сургут (3462)77-98-35  
Сыктывкар (8212)25-95-17  
Тамбов (4752)50-40-97  
Тверь (4822)63-31-35

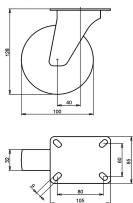
Тольятти (8482)63-91-07  
Томск (3822)98-41-53  
Тула (4872)33-79-87  
Тюмень (3452)66-21-18  
Ульяновск (8422)24-23-59  
Улан-Удэ (3012)59-97-51  
Уфа (347)229-48-12  
Хабаровск (4212)92-98-04  
Чебоксары (8352)28-53-07  
Челябинск (351)202-03-61  
Череповец (8202)49-02-64  
Чита (3022)38-34-83  
Якутск (4112)23-90-97  
Ярославль (4852)69-52-93

Россия +7(495)268-04-70

Казахстан +7(7172)727-132

Киргизия +996(312)96-26-47

<https://liv.nt-rt.ru/> || [vis@nt-rt.ru](mailto:vis@nt-rt.ru)



## Product description

standard Swivel transport castor with an overall height of 128 mm

Wheel diameter x width: 100 x 32 mm

Top plate with 4 mounting holes of 9 mm, mounting hole distance 80x60 mm and top plate outer dimensions: 105x85 mm

Wheel with roller bearing and black rubber tyre with hardness 80 ° Shore A on steel rim with electrogalvanization zinc plating anti-corrosion protection Cr6-free.

### Approved and tested load capacity

Dynamic 80 kg

Static 100 kg

### Temperature range:

Continuous operation: -20 | +70°C

Short (10 min) exposure: -30 | +80°C

### Advantages of this Comfortable drive Swivel transport castor:

- ✓ to manoeuvre
- ✓ performance on uneven floor or obstacles
- ✓ and strong wheel systems

## LIV SYSTEMS standard Swivel transport castor + black rubber tyre Ø100 x W32mm for 80kg Prod ID: 31584

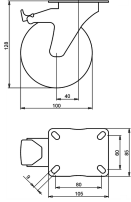
ID 31584: Castor overall height 128 mm | 4 mounting holes with distance 80x60 mm | Wheel with roller bearing and black rubber tyre with hardness 80 ° Shore A | Comfortable drive, easy to manoeuvre, good performance on uneven floor or obstacles, robust and

## Product information

- Article code 2-586 A
- SKU 31584
- EAN 3838461315848

## Specifications

The result of our quality is maximum performance!



## Product description

standard Swivel transport castor with brake with an overall height of 128 mm

Wheel diameter x width: 100 x 32 mm

Top plate with 4 mounting holes of 9 mm, mounting hole distance 80x60 mm and top plate outer dimensions: 105x85 mm

Wheel with roller bearing and black rubber tyre with hardness 80 ° Shore A on polypropylene

the double brake system, brakes the turning of the wheel and the swivel rotation.

### Approved and tested load capacity

Dynamic 80 kg

Static 100 kg

### Temperature range:

Continuous operation: -20 | +70°C

Short (10 min) exposure: -30 | +80°C

### Advantages of this Smooth drive wheel Swivel transport castor with brake:

- ✓ wet floor
- ✓ reduces the transmission of both vibration and noise
- ✓ with low obstacles

## LIV SYSTEMS standard Swivel transport castor with brake + black rubber tyre Ø100 x W32mm for 80kg Prod ID: 31195

ID 31195: Castor overall height 128 mm | 4 mounting holes with distance 80x60 mm | Wheel with roller bearing and black rubber tyre with hardness 80 ° Shore A | The double brake system, brakes the turning of the wheel and the swivel rotation. | Smooth driv

## Product information

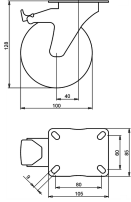
- Article code 2-929 ISO
- SKU 31195
- EAN 3838461311956

## Specifications

The result of our quality is maximum performance!

[Close](#)

[Close](#)



## Product description

standard Swivel transport castor with brake with an overall height of 128 mm

Wheel diameter x width: 100 x 32 mm

Top plate with 4 mounting holes of 9 mm, mounting hole distance 80x60 mm and top plate outer dimensions: 105X85 mm

Wheel with roller bearing and black rubber tyre with hardness 80 ° Shore A on steel rim with electrogalvanization zinc plating anti-corrosion protection Cr6-free the double brake system, brakes the turning of the wheel and the swivel rotation.

### Approved and tested load capacity

Dynamic 80 kg

Static 100 kg

### Temperature range:

Continuous operation: -20 | +70°C

Short (10 min) exposure: -30 | +80°C

### Advantages of this Comfortable drive Swivel transport castor with brake:

- ✓ to manoeuvre
- ✓ performance on uneven floor or obstacles
- ✓ and strong wheel systems

## LIV SYSTEMS standard Swivel transport castor with brake + black rubber tyre Ø100 x W32mm for 80kg Prod ID: 30295

ID 30295: Castor overall height 128 mm | 4 mounting holes with distance 80x60 mm | Wheel with roller bearing and black rubber tyre with hardness 80 ° Shore A | The double brake system, brakes the turning of the wheel and the swivel rotation. | Comfortable

## Product information

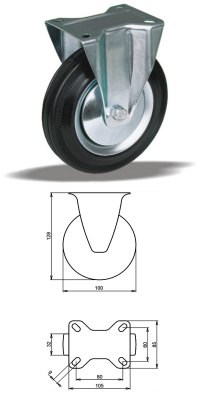
- Article code 2-437 A
- SKU 30295
- EAN 3838461302954

## Specifications

The result of our quality is maximum performance!

[Close](#)

[Close](#)



## Product description

standard fixed transport castor with an overall height of 128 mm

Wheel diameter x width: 100 x 32 mm

Top plate with 4 mounting holes of 9 mm, mounting hole distance 80x60 mm and top plate outer dimensions: 105x85 mm

Wheel with roller bearing and black rubber tyre with hardness 80 ° Shore A on steel rim with electrogalvanization zinc plating anti-corrosion protection Cr6-free.

### Approved and tested load capacity

Dynamic 80 kg

Static 100 kg

### Temperature range:

Continuous operation: -20 | +70°C

Short (10 min) exposure: -30 | +80°C

### Advantages of this Comfortable drive fixed transport castor:

- ✓ to manoeuvre
- ✓ performance on uneven floor or obstacles
- ✓ and strong wheel systems

## LIV SYSTEMS standard fixed transport castor + black rubber tyre Ø100 x W32mm for 80kg Prod ID: 31613

ID 31613: Castor overall height 128 mm | 4 mounting holes with distance 80x60 mm | Wheel with roller bearing and black rubber tyre with hardness 80 ° Shore A |

Comfortable drive, easy to manoeuvre, good performance on uneven floor or obstacles, robust and

## Product information

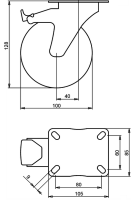
- Article code 2-589 A
- SKU 31613
- EAN 3838461316135

## Specifications

The result of our quality is maximum performance!

[Close](#)

[Close](#)



## Product description

standard Swivel castor with brake with an overall height of 128 mm  
 Wheel diameter x width: 100 x 32 mm  
 Top plate with 4 mounting holes of 9 mm, mounting hole distance 80x60 mm and top plate outer dimensions: 105x85 mm  
 Wheel with plain bearing and grey rubber tyre with hardness 83 ° Shore A on polypropylene  
 the double brake system, brakes the turning of the wheel and the swivel rotation.

### Approved and tested load capacity

Dynamic 80 kg  
 Static 100 kg

### Temperature range:

Continuous operation: -20 | +70°C  
 Short (10 min) exposure: -30 | +80°C

### Advantages of this Elegant trip Swivel castor with brake:

- ✓ rubber is non-marking and leaves no marks on the floor
- ✓ reduces the transmission of both vibration and noise
- ✓ and outdoor use

## LIV SYSTEMS standard Swivel castor with brake + grey rubber tyre Ø100 x W32mm for 80kg Prod ID: 39424

ID 39424: Castor overall height 128 mm | 4 mounting holes with distance 80x60 mm | Wheel with plain bearing and grey rubber tyre with hardness 83 ° Shore A | The double brake system, brakes the turning of the wheel and the swivel rotation. | Elegant trip,

## Product information

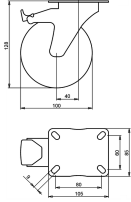
- Article code 2-936 ISO
- SKU 39424
- EAN 3838461394249

## Specifications

The result of our quality is maximum performance!

[Close](#)

[Close](#)



## Product description

standard Swivel castor with brake with an overall height of 128 mm

Wheel diameter x width: 100 x 32 mm

Top plate with 4 mounting holes of 9 mm, mounting hole distance 80x60 mm and top plate outer dimensions: 105x85 mm

Wheel with roller bearing and grey rubber tyre with hardness 83 ° Shore A on polypropylene  
the double brake system, brakes the turning of the wheel and the swivel rotation.

### Approved and tested load capacity

Dynamic 80 kg

Static 100 kg

### Temperature range:

Continuous operation: -20 | +70°C

Short (10 min) exposure: -30 | +80°C

### Advantages of this Elegant trip Swivel castor with brake:

- ✓ rubber is non-marking and leaves no marks on the floor
- ✓ reduces the transmission of both vibration and noise
- ✓ and outdoor use

## LIV SYSTEMS standard Swivel castor with brake + grey rubber tyre Ø100 x W32mm for 80kg Prod ID: 38613

ID 38613: Castor overall height 128 mm | 4 mounting holes with distance 80x60 mm | Wheel with roller bearing and grey rubber tyre with hardness 83 ° Shore A | The double brake system, brakes the turning of the wheel and the swivel rotation. | Elegant trip

## Product information

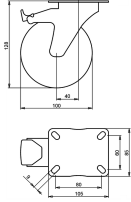
- Article code 2-929 ISO
- SKU 38613
- EAN 3838461386138

## Specifications

The result of our quality is maximum performance!

[Close](#)

[Close](#)



## Product description

standard Swivel transport castor with brake with an overall height of 128 mm

Wheel diameter x width: 100 x 32 mm

Top plate with 4 mounting holes of 9 mm, mounting hole distance 80x60 mm and top plate outer dimensions: 105x85 mm

Wheel with plain bearing and black rubber tyre with hardness 80 ° Shore A on polypropylene

the double brake system, brakes the turning of the wheel and the swivel rotation.

### Approved and tested load capacity

Dynamic 80 kg

Static 100 kg

### Temperature range:

Continuous operation: -20 | +70°C

Short (10 min) exposure: -30 | +80°C

### Advantages of this Smooth drive wheel Swivel transport castor with brake:

- ✓ wet floor
- ✓ reduces the transmission of both vibration and noise
- ✓ with low obstacles

## LIV SYSTEMS standard Swivel transport castor with brake + black rubber tyre Ø100 x W32mm for 80kg Prod ID: 31203

ID 31203: Castor overall height 128 mm | 4 mounting holes with distance 80x60 mm | Wheel with plain bearing and black rubber tyre with hardness 80 ° Shore A | The double brake system, brakes the turning of the wheel and the swivel rotation. | Smooth drive

## Product information

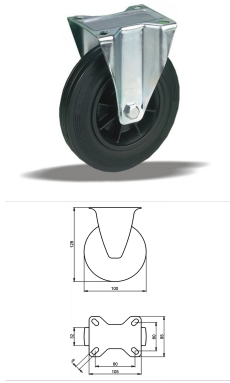
- Article code 2-936 ISO
- SKU 31203
- EAN 3838461312038

## Specifications

The result of our quality is maximum performance!

[Close](#)

[Close](#)



## Product description

standard fixed transport castor with an overall height of 128 mm

Wheel diameter x width: 100 x 32 mm

Top plate with 4 mounting holes of 9 mm, mounting hole distance 80x60 mm and top plate outer dimensions: 105x85 mm

Wheel with roller bearing and black rubber tyre with hardness 80 ° Shore A on polypropylene.

### Approved and tested load capacity

Dynamic 80 kg

Static 100 kg

### Temperature range:

Continuous operation: -20 | +70°C

Short (10 min) exposure: -30 | +80°C

### Advantages of this Smooth drive wheel fixed transport castor:

- ✓ wet floor
- ✓ reduces the transmission of both vibration and noise
- ✓ with low obstacles

## LIV SYSTEMS standard fixed transport castor + black rubber tyre Ø100 x W32mm for 80kg Prod ID: 31475

ID 31475: Castor overall height 128 mm | 4 mounting holes with distance 80x60 mm | Wheel with roller bearing and black rubber tyre with hardness 80 ° Shore A | Smooth drive wheel, for wet floor, rubber reduces the transmission of both vibration and noise,

## Product information

- Article code 2-952 ISO
- SKU 31475
- EAN 3838461314759

## Specifications

The result of our quality is maximum performance!

[Close](#)

[Close](#)





## Product description

standard Wheel with plain bearing and black rubber tyre with hardness 80 ° Shore A on steel rim with electrogalvanization zinc plating anti-corrosion protection Cr6-free

Wheel diameter x width: 100 x 32 mm

Axle hole: 12 mm

Hub length: 44 mm

### Approved and tested load capacity

Dynamic 80 kg

Static 100 kg

### Temperature range:

Continuous operation: -20 | +70°C

Short (10 min) exposure: -30 | +80°C

### Advantages of this Comfortable drive wheel:

- ✓ to manoeuvre
- ✓ performance on uneven floor or obstacles
- ✓ and strong wheel systems

## LIV SYSTEMS standard transport wheel + black rubber tyre Ø100 x W32mm for 80kg Prod ID: 62372

ID 62372: standard Wheel with plain bearing and black rubber tyre with hardness 80 ° Shore A on steel rim with electrogalvanization zinc plating anti-corrosion protection Cr6-free | Axle hole: 12 mm | Hub length: 44 mm |

Comfortable drive, easy to manoeuvre

## Product information

- Article code 2-123 ISO
- SKU 62372
- EAN 3838461623721



## Product description

standard Wheel with plain bearing and grey rubber tyre with hardness 83 ° Shore A on polypropylene

Wheel diameter x width: 100 x 32 mm

Axle hole: 12 mm

Hub length: 44 mm

### Approved and tested load capacity

Dynamic 80 kg

Static 100 kg

### Temperature range:

Continuous operation: -20 | +70°C

Short (10 min) exposure: -30 | +80°C

### Advantages of this Elegant trip wheel:

- ✓ rubber is non-marking and leaves no marks on the floor
- ✓ reduces the transmission of both vibration and noise
- ✓ and outdoor use

## LIV SYSTEMS standard wheel + grey rubber tyre Ø100 x W32mm for 80kg

### Prod ID: 39363

ID 39363: standard Wheel with plain bearing and grey rubber tyre with hardness 83 ° Shore A on polypropylene | Axle hole: 12 mm | Hub length: 44 mm | Elegant trip, Grey rubber is non-marking and leaves no marks on the floor, rubber reduces the transmission

## Product information

- Article code 2-943 ISO
- SKU 39363
- EAN 3838461393631



## Product description

standard Wheel with roller bearing and grey rubber tyre with hardness 83 ° Shore A on polypropylene

Wheel diameter x width: 100 x 32 mm

Axle hole: 12 mm

Hub length: 44 mm

### Approved and tested load capacity

Dynamic 80 kg

Static 100 kg

### Temperature range:

Continuous operation: -20 | +70°C

Short (10 min) exposure: -30 | +80°C

### Advantages of this Elegant trip wheel:

- ✓ rubber is non-marking and leaves no marks on the floor
- ✓ reduces the transmission of both vibration and noise
- ✓ and outdoor use

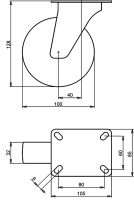
## LIV SYSTEMS standard wheel + grey rubber tyre Ø100 x W32mm for 80kg

### Prod ID: 33554

ID 33554: standard Wheel with roller bearing and grey rubber tyre with hardness 83 ° Shore A on polypropylene | Axle hole: 12 mm | Hub length: 44 mm | Elegant trip, Grey rubber is non-marking and leaves no marks on the floor, rubber reduces the transmissio

## Product information

- Article code 2-943 A
- SKU 33554
- EAN 3838461335549



## Product description

standard Swivel castor with an overall height of 128 mm

Wheel diameter x width: 100 x 32 mm

Top plate with 4 mounting holes of 9 mm, mounting hole distance 80x60 mm and top plate outer dimensions: 105x85 mm

Wheel with plain bearing and grey rubber tyre with hardness 83 ° Shore A on polypropylene.

### Approved and tested load capacity

Dynamic 80 kg

Static 100 kg

### Temperature range:

Continuous operation: -20 | +70°C

Short (10 min) exposure: -30 | +80°C

### Advantages of this Elegant trip Swivel castor:

- ✓ rubber is non-marking and leaves no marks on the floor
- ✓ reduces the transmission of both vibration and noise
- ✓ and outdoor use

## LIV SYSTEMS standard Swivel castor + grey rubber tyre Ø100 x W32mm for 80kg Prod ID: 39393

ID 39393: Castor overall height 128 mm | 4 mounting holes with distance 80x60 mm | Wheel with plain bearing and grey rubber tyre with hardness 83 ° Shore A | Elegant trip, Grey rubber is non-marking and leaves no marks on the floor, rubber reduces the tra

## Product information

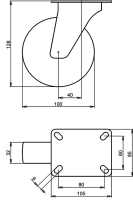
- Article code 2-922 ISO
- SKU 39393
- EAN 3838461393938

## Specifications

The result of our quality is maximum performance!

[Close](#)

[Close](#)



## Product description

standard Swivel castor with an overall height of 128 mm

Wheel diameter x width: 100 x 32 mm

Top plate with 4 mounting holes of 9 mm, mounting hole distance 80x60 mm and top plate outer dimensions: 105x85 mm

Wheel with roller bearing and grey rubber tyre with hardness 83 ° Shore A on polypropylene.

### Approved and tested load capacity

Dynamic 80 kg

Static 100 kg

### Temperature range:

Continuous operation: -20 | +70°C

Short (10 min) exposure: -30 | +80°C

### Advantages of this Elegant trip Swivel castor:

- ✓ rubber is non-marking and leaves no marks on the floor
- ✓ reduces the transmission of both vibration and noise
- ✓ and outdoor use

## LIV SYSTEMS standard Swivel castor + grey rubber tyre Ø100 x W32mm for 80kg Prod ID: 33555

ID 33555: Castor overall height 128 mm | 4 mounting holes with distance 80x60 mm | Wheel with roller bearing and grey rubber tyre with hardness 83 ° Shore A | Elegant trip, Grey rubber is non-marking and leaves no marks on the floor, rubber reduces the tr

## Product information

- Article code 2-915 ISO
- SKU 33555
- EAN 3838461335556

## Specifications

The result of our quality is maximum performance!

[Close](#)

[Close](#)



## Product description

standard Swivel castor with an overall height of 128 mm

Wheel diameter x width: 100 x 32 mm

Top plate with 4 mounting holes of #5 mm, mounting hole distance #50 mm and top plate outer dimensions: 70 mm

Wheel with plain bearing and grey rubber tyre with hardness 83 ° Shore A on polypropylene.

### Approved and tested load capacity

Dynamic 80 kg

Static 100 kg

### Temperature range:

Continuous operation: -20 | +70°C

Short (10 min) exposure: -30 | +80°C

### Advantages of this Elegant trip Swivel castor:

- ✓ rubber is non-marking and leaves no marks on the floor
- ✓ reduces the transmission of both vibration and noise
- ✓ and outdoor use

## LIV SYSTEMS standard Swivel castor + grey rubber tyre Ø100 x W32mm for 80kg Prod ID: 39464

ID 39464: Castor overall height 128 mm | 4 mounting holes with distance #50 mm | Wheel with plain bearing and grey rubber tyre with hardness 83 ° Shore A | Elegant trip, Grey rubber is non-marking and leaves no marks on the floor, rubber reduces the trans

## Product information

- Article code 2-973 ISO
- SKU 39464
- EAN 3838461394645



## Product description

standard Swivel castor with an overall height of 128 mm

Wheel diameter x width: 100 x 32 mm

Top plate with 4 mounting holes of #\$\$ mm, mounting hole distance #\$\$ mm and top plate outer dimensions: 70 mm

Wheel with roller bearing and grey rubber tyre with hardness 83 ° Shore A on polypropylene.

### Approved and tested load capacity

Dynamic 80 kg

Static 100 kg

### Temperature range:

Continuous operation: -20 | +70°C

Short (10 min) exposure: -30 | +80°C

### Advantages of this Elegant trip Swivel castor:

- ✓ rubber is non-marking and leaves no marks on the floor
- ✓ reduces the transmission of both vibration and noise
- ✓ and outdoor use

## LIV SYSTEMS standard Swivel castor + grey rubber tyre Ø100 x W32mm for 80kg Prod ID: 39463

ID 39463: Castor overall height 128 mm | 4 mounting holes with distance #\$\$ mm | Wheel with roller bearing and grey rubber tyre with hardness 83 ° Shore A | Elegant trip, Grey rubber is non-marking and leaves no marks on the floor, rubber reduces the tran

## Product information

- Article code 2-966 ISO
- SKU 39463
- EAN 3838461394638



## Product description

standard Swivel castor with brake with an overall height of 128 mm

Wheel diameter x width: 100 x 32 mm

Top plate with 4 mounting holes of 4 mm, mounting hole distance 40 mm and top plate outer dimensions: 70 mm

Wheel with plain bearing and grey rubber tyre with hardness 83 ° Shore A on polypropylene the double brake system, brakes the turning of the wheel and the swivel rotation.

### Approved and tested load capacity

Dynamic 80 kg

Static 100 kg

### Temperature range:

Continuous operation: -20 | +70°C

Short (10 min) exposure: -30 | +80°C


### Advantages of this Elegant trip Swivel castor with brake:

- ✓ rubber is non-marking and leaves no marks on the floor
- ✓ reduces the transmission of both vibration and noise
- ✓ and outdoor use

## LIV SYSTEMS standard Swivel castor with brake + grey rubber tyre Ø100 x W32mm for 80kg Prod ID: 39513

ID 39513: Castor overall height 128 mm | 4 mounting holes with distance 40 mm | Wheel with plain bearing and grey rubber tyre with hardness 83 ° Shore A | The double brake system, brakes the turning of the wheel and the swivel rotation. | Elegant trip, G

## Product information

- 
- Article code 2-987 ISO
  - SKU 39513
  - EAN 3838461395130





## Product description

standard Swivel castor with brake with an overall height of 128 mm

Wheel diameter x width: 100 x 32 mm

Top plate with 4 mounting holes of 4 mm, mounting hole distance 40 mm and top plate outer dimensions: 70 mm

Wheel with roller bearing and grey rubber tyre with hardness 83 ° Shore A on polypropylene the double brake system, brakes the turning of the wheel and the swivel rotation.

### Approved and tested load capacity

Dynamic 80 kg

Static 100 kg

### Temperature range:

Continuous operation: -20 | +70°C

Short (10 min) exposure: -30 | +80°C


### Advantages of this Elegant trip Swivel castor with brake:

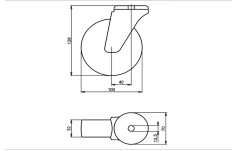
- ✓ rubber is non-marking and leaves no marks on the floor
- ✓ reduces the transmission of both vibration and noise
- ✓ and outdoor use

## LIV SYSTEMS standard Swivel castor with brake + grey rubber tyre Ø100 x W32mm for 80kg Prod ID: 39505

ID 39505: Castor overall height 128 mm | 4 mounting holes with distance 40 mm | Wheel with roller bearing and grey rubber tyre with hardness 83 ° Shore A | The double brake system, brakes the turning of the wheel and the swivel rotation. | Elegant trip,

## Product information

- 
- Article code 2-980 ISO
  - SKU 39505
  - EAN 3838461395055



## Product description

standard Swivel castor with an overall height of 128 mm

Wheel diameter x width: 100 x 32 mm

Top plate with 4 mounting holes of 12,5 mm, mounting hole distance #\$\$ mm and top plate outer dimensions: 70 mm

Wheel with plain bearing and grey rubber tyre with hardness 83 ° Shore A on polypropylene.

### Approved and tested load capacity

Dynamic 80 kg

Static 100 kg

### Temperature range:

Continious operation: -20 | +70°C

Short (10 min) exposure: -30 | +80°C

### Advantages of this Elegant trip Swivel castor:

- ✓ rubber is non-marking and leaves no marks on the floor
- ✓ reduces the transmission of both vibration and noise
- ✓ and outdoor use

## LIV SYSTEMS standard Swivel castor + grey rubber tyre Ø100 x W32mm for 80kg Prod ID: 39554

ID 39554: Castor overall height 128 mm | 4 mounting holes with distance #\$\$ mm | Wheel with plain bearing and grey rubber tyre with hardness 83 ° Shore A | Elegant trip, Grey rubber is non-marking and leaves no marks on the floor, rubber reduces the trans

## Product information

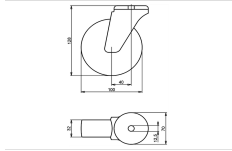
- Article code 2-973 L12
- SKU 39554
- EAN 3838461395543

## Specifications

The result of our quality is maximum performance!

[Close](#)

[Close](#)



## Product description

standard Swivel castor with an overall height of 128 mm

Wheel diameter x width: 100 x 32 mm

Top plate with 4 mounting holes of 12,5 mm, mounting hole distance #\$\$ mm and top plate outer dimensions: 70 mm

Wheel with roller bearing and grey rubber tyre with hardness 83 ° Shore A on polypropylene.

### Approved and tested load capacity

Dynamic 80 kg

Static 100 kg

### Temperature range:

Continious operation: -20 | +70°C

Short (10 min) exposure: -30 | +80°C

### Advantages of this Elegant trip Swivel castor:

- ✓ rubber is non-marking and leaves no marks on the floor
- ✓ reduces the transmission of both vibration and noise
- ✓ and outdoor use

## LIV SYSTEMS standard Swivel castor + grey rubber tyre Ø100 x W32mm for 80kg Prod ID: 39253

ID 39253: Castor overall height 128 mm | 4 mounting holes with distance #\$\$ mm | Wheel with roller bearing and grey rubber tyre with hardness 83 ° Shore A | Elegant trip, Grey rubber is non-marking and leaves no marks on the floor, rubber reduces the tran

## Product information

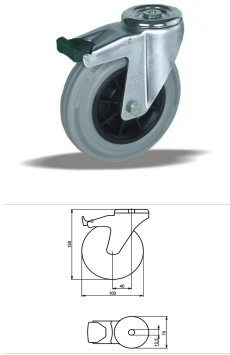
- Article code 2-966 L12
- SKU 39253
- EAN 3838461392535

## Specifications

The result of our quality is maximum performance!

[Close](#)

[Close](#)



## Product description

standard Swivel castor with brake with an overall height of 128 mm  
 Wheel diameter x width: 100 x 32 mm  
 Top plate with 4 mounting holes of 12,5 mm, mounting hole distance #\$\$ mm and top plate outer dimensions: 70 mm  
 Wheel with plain bearing and grey rubber tyre with hardness 83 ° Shore A on polypropylene  
 the double brake system, brakes the turning of the wheel and the swivel rotation.

### Approved and tested load capacity

Dynamic 80 kg  
 Static 100 kg

### Temperature range:

Continious operation: -20 | +70°C  
 Short (10 min) exposure: -30 | +80°C

### Advantages of this Elegant trip Swivel castor with brake:

- ✓ rubber is non-marking and leaves no marks on the floor
- ✓ reduces the transmission of both vibration and noise
- ✓ and outdoor use

## LIV SYSTEMS standard Swivel castor with brake + grey rubber tyre Ø100 x W32mm for 80kg Prod ID: 39595

ID 39595: Castor overall height 128 mm | 4 mounting holes with distance #\$\$ mm | Wheel with plain bearing and grey rubber tyre with hardness 83 ° Shore A | The double brake system, brakes the turning of the wheel and the swivel rotation. | Elegant trip, G

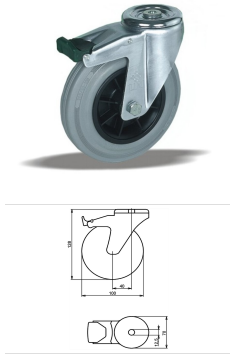
## Product information

- Article code 2-987 L12
- SKU 39595
- EAN 3838461395956

## Specifications

The result of our quality is maximum performance!

[Close](#)  
[Close](#)



## Product description

standard Swivel castor with brake with an overall height of 128 mm  
 Wheel diameter x width: 100 x 32 mm  
 Top plate with 4 mounting holes of 12,5 mm, mounting hole distance #\$\$ mm and top plate outer dimensions: 70 mm  
 Wheel with roller bearing and grey rubber tyre with hardness 83 ° Shore A on polypropylene  
 the double brake system, brakes the turning of the wheel and the swivel rotation.

### Approved and tested load capacity

Dynamic 80 kg  
 Static 100 kg

### Temperature range:

Continious operation: -20 | +70°C  
 Short (10 min) exposure: -30 | +80°C

### Advantages of this Elegant trip Swivel castor with brake:

- ✓ rubber is non-marking and leaves no marks on the floor
- ✓ reduces the transmission of both vibration and noise
- ✓ and outdoor use

## LIV SYSTEMS standard Swivel castor with brake + grey rubber tyre Ø100 x W32mm for 80kg Prod ID: 39594

ID 39594: Castor overall height 128 mm | 4 mounting holes with distance #\$\$ mm | Wheel with roller bearing and grey rubber tyre with hardness 83 ° Shore A | The double brake system, brakes the turning of the wheel and the swivel rotation. | Elegant trip,

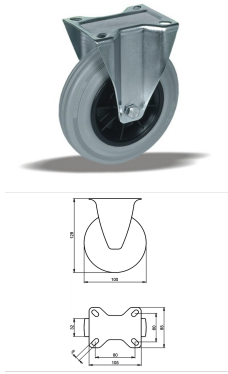
## Product information

- Article code 2-980 L12
- SKU 39594
- EAN 3838461395949

## Specifications

The result of our quality is maximum performance!

[Close](#)  
[Close](#)



## Product description

standard Fixed castor with an overall height of 128 mm

Wheel diameter x width: 100 x 32 mm

Top plate with 4 mounting holes of 9 mm, mounting hole distance 80x60 mm and top plate outer dimensions: 105x85 mm

Wheel with plain bearing and grey rubber tyre with hardness 83 ° Shore A on polypropylene.

### Approved and tested load capacity

Dynamic 80 kg

Static 100 kg

### Temperature range:

Continuous operation: -20 | +70°C

Short (10 min) exposure: -30 | +80°C

### Advantages of this Elegant trip Fixed castor:

- ✓ rubber is non-marking and leaves no marks on the floor
- ✓ reduces the transmission of both vibration and noise
- ✓ and outdoor use

## LIV SYSTEMS standard Fixed castor + grey rubber tyre Ø100 x W32mm for 80kg Prod ID: 39635

ID 39635: Castor overall height 128 mm | 4 mounting holes with distance 80x60 mm | Wheel with plain bearing and grey rubber tyre with hardness 83 ° Shore A | Elegant trip, Grey rubber is non-marking and leaves no marks on the floor, rubber reduces the tra

## Product information

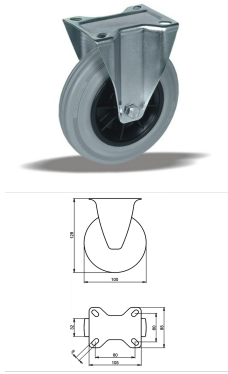
- Article code 2-959 ISO
- SKU 39635
- EAN 3838461396359

## Specifications

The result of our quality is maximum performance!

[Close](#)

[Close](#)



## Product description

standard Fixed castor with an overall height of 128 mm

Wheel diameter x width: 100 x 32 mm

Top plate with 4 mounting holes of 9 mm, mounting hole distance 80x60 mm and top plate outer dimensions: 105x85 mm

Wheel with roller bearing and grey rubber tyre with hardness 83 ° Shore A on polypropylene.

### Approved and tested load capacity

Dynamic 80 kg

Static 100 kg

### Temperature range:

Continuous operation: -20 | +70°C

Short (10 min) exposure: -30 | +80°C

### Advantages of this Elegant trip Fixed castor:

- ✓ rubber is non-marking and leaves no marks on the floor
- ✓ reduces the transmission of both vibration and noise
- ✓ and outdoor use

## LIV SYSTEMS standard Fixed castor + grey rubber tyre Ø100 x W32mm for 80kg Prod ID: 38605

ID 38605: Castor overall height 128 mm | 4 mounting holes with distance 80x60 mm | Wheel with roller bearing and grey rubber tyre with hardness 83 ° Shore A | Elegant trip, Grey rubber is non-marking and leaves no marks on the floor, rubber reduces the tr

## Product information

- Article code 2-952 ISO
- SKU 38605
- EAN 3838461386053

## Specifications

The result of our quality is maximum performance!

[Close](#)

[Close](#)



## Product description

standard Wheel with plain bearing and black rubber tyre with hardness 80 ° Shore A on polypropylene

Wheel diameter x width: 100 x 32 mm

Axle hole: 12 mm

Hub length: 44 mm

### Approved and tested load capacity

Dynamic 80 kg

Static 100 kg

### Temperature range:

Continous operation: -20 | +70°C

Short (10 min) exposure: -30 | +80°C

### Advantages of this Smooth drive wheel wheel:

- ✓ wet floor
- ✓ reduces the transmission of both vibration and noise
- ✓ with low obstacles

## LIV SYSTEMS standard transport wheel + black rubber tyre Ø100 x W32mm for 80kg Prod ID: 30215

ID 30215: standard Wheel with plain bearing and black rubber tyre with hardness 80 ° Shore A on polypropylene | Axle hole: 12 mm | Hub length: 44 mm | Smooth drive wheel, for wet floor, rubber reduces the transmission of both vibration and noise, perfect w

## Product information

- Article code 2-943 ISO
- SKU 30215
- EAN 3838461302152





## Product description

standard Wheel with roller bearing and black rubber tyre with hardness 80 ° Shore A on polypropylene

Wheel diameter x width: 100 x 32 mm

Axle hole: 12 mm

Hub length: 44 mm

### Approved and tested load capacity

Dynamic 80 kg

Static 100 kg

### Temperature range:

Continous operation: -20 | +70°C

Short (10 min) exposure: -30 | +80°C

### Advantages of this Smooth drive wheel wheel:

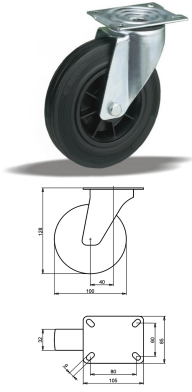
- ✓ wet floor
- ✓ reduces the transmission of both vibration and noise
- ✓ with low obstacles

## LIV SYSTEMS standard transport wheel + black rubber tyre Ø100 x W32mm for 80kg Prod ID: 30214

ID 30214: standard Wheel with roller bearing and black rubber tyre with hardness 80 ° Shore A on polypropylene | Axle hole: 12 mm | Hub length: 44 mm | Smooth drive wheel, for wet floor, rubber reduces the transmission of both vibration and noise, perfect

## Product information

- Article code 2-943 A
- SKU 30214
- EAN 3838461302145



## Product description

standard Swivel transport castor with an overall height of 128 mm

Wheel diameter x width: 100 x 32 mm

Top plate with 4 mounting holes of 9 mm, mounting hole distance 80x60 mm and top plate outer dimensions: 105x85 mm

Wheel with plain bearing and black rubber tyre with hardness 80 ° Shore A on polypropylene.

### Approved and tested load capacity

Dynamic 80 kg

Static 100 kg

### Temperature range:

Continuous operation: -20 | +70°C

Short (10 min) exposure: -30 | +80°C

### Advantages of this Smooth drive wheel Swivel transport castor:

- ✓ wet floor
- ✓ reduces the transmission of both vibration and noise
- ✓ with low obstacles

## LIV SYSTEMS standard Swivel transport castor + black rubber tyre Ø100 x W32mm for 80kg Prod ID: 31115

ID 31115: Castor overall height 128 mm | 4 mounting holes with distance 80x60 mm | Wheel with plain bearing and black rubber tyre with hardness 80 ° Shore A | Smooth drive wheel, for wet floor, rubber reduces the transmission of both vibration and noise,

## Product information

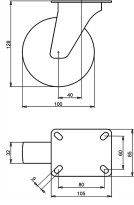
- Article code 2-922 ISO
- SKU 31115
- EAN 3838461311154

## Specifications

The result of our quality is maximum performance!

[Close](#)

[Close](#)



## Product description

standard Swivel transport castor with an overall height of 128 mm

Wheel diameter x width: 100 x 32 mm

Top plate with 4 mounting holes of 9 mm, mounting hole distance 80x60 mm and top plate outer dimensions: 105x85 mm

Wheel with roller bearing and black rubber tyre with hardness 80 ° Shore A on polypropylene.

### Approved and tested load capacity

Dynamic 80 kg

Static 100 kg

### Temperature range:

Continuous operation: -20 | +70°C

Short (10 min) exposure: -30 | +80°C

### Advantages of this Smooth drive wheel Swivel transport castor:

- ✓ wet floor
- ✓ reduces the transmission of both vibration and noise
- ✓ with low obstacles

## LIV SYSTEMS standard Swivel transport castor + black rubber tyre Ø100 x W32mm for 80kg Prod ID: 31114

ID 31114: Castor overall height 128 mm | 4 mounting holes with distance 80x60 mm | Wheel with roller bearing and black rubber tyre with hardness 80 ° Shore A | Smooth drive wheel, for wet floor, rubber reduces the transmission of both vibration and noise,

## Product information

- Article code 2-915 ISO
- SKU 31114
- EAN 3838461311147

## Specifications

The result of our quality is maximum performance!

[Close](#)

[Close](#)



## Product description

standard Swivel transport castor with an overall height of 128 mm

Wheel diameter x width: 100 x 32 mm

Top plate with 4 mounting holes of #\$\$ mm, mounting hole distance #\$\$ mm and top plate outer dimensions: 70 mm

Wheel with plain bearing and black rubber tyre with hardness 80 ° Shore A on polypropylene.

### Approved and tested load capacity

Dynamic 80 kg

Static 100 kg

### Temperature range:

Continious operation: -20 | +70°C

Short (10 min) exposure: -30 | +80°C

### Advantages of this Smooth drive wheel Swivel transport castor:

- ✓ wet floor
- ✓ reduces the transmission of both vibration and noise
- ✓ with low obstacles

## LIV SYSTEMS standard Swivel transport castor + black rubber tyre Ø100 x W32mm for 80kg Prod ID: 31264

ID 31264: Castor overall height 128 mm | 4 mounting holes with distance #\$\$ mm | Wheel with plain bearing and black rubber tyre with hardness 80 ° Shore A | Smooth drive wheel, for wet floor, rubber reduces the transmission of both vibration and noise, pe

## Product information

- Article code 2-973 ISO
- SKU 31264
- EAN 3838461312649



## Product description

standard Swivel transport castor with an overall height of 128 mm

Wheel diameter x width: 100 x 32 mm

Top plate with 4 mounting holes of #5 mm, mounting hole distance #50 mm and top plate outer dimensions: 70 mm

Wheel with roller bearing and black rubber tyre with hardness 80 ° Shore A on polypropylene.

### Approved and tested load capacity

Dynamic 80 kg

Static 100 kg

### Temperature range:

Continuous operation: -20 | +70°C

Short (10 min) exposure: -30 | +80°C

### Advantages of this Smooth drive wheel Swivel transport castor:

- ✓ wet floor
- ✓ reduces the transmission of both vibration and noise
- ✓ with low obstacles

## LIV SYSTEMS standard Swivel transport castor + black rubber tyre Ø100 x W32mm for 80kg Prod ID: 31245

ID 31245: Castor overall height 128 mm | 4 mounting holes with distance #50 mm | Wheel with roller bearing and black rubber tyre with hardness 80 ° Shore A | Smooth drive wheel, for wet floor, rubber reduces the transmission of both vibration and noise, p

## Product information

- Article code 2-966 ISO
- SKU 31245
- EAN 3838461312458



## Product description

standard Swivel transport castor with brake with an overall height of 128 mm

Wheel diameter x width: 100 x 32 mm

Top plate with 4 mounting holes of #\$\$% mm, mounting hole distance #\$\$% mm and top plate outer dimensions: 70 mm

Wheel with plain bearing and black rubber tyre with hardness 80 ° Shore A on polypropylene the double brake system, brakes the turning of the wheel and the swivel rotation.

### Approved and tested load capacity

Dynamic 80 kg

Static 100 kg

### Temperature range:

Continuous operation: -20 | +70°C

Short (10 min) exposure: -30 | +80°C


### Advantages of this Smooth drive wheel Swivel transport castor with brake:

- ✓ wet floor
- ✓ reduces the transmission of both vibration and noise
- ✓ with low obstacles

## LIV SYSTEMS standard Swivel transport castor with brake + black rubber tyre Ø100 x W32mm for 80kg Prod ID: 31363

ID 31363: Castor overall height 128 mm | 4 mounting holes with distance #\$\$% mm | Wheel with plain bearing and black rubber tyre with hardness 80 ° Shore A | The double brake system, brakes the turning of the wheel and the swivel rotation. | Smooth drive w

## Product information

- 
- Article code 2-987 ISO
  - SKU 31363
  - EAN 3838461313639



## Product description

standard Swivel transport castor with brake with an overall height of 128 mm

Wheel diameter x width: 100 x 32 mm

Top plate with 4 mounting holes of #\$\$% mm, mounting hole distance #\$\$% mm and top plate outer dimensions: 70 mm

Wheel with roller bearing and black rubber tyre with hardness 80 ° Shore A on polypropylene the double brake system, brakes the turning of the wheel and the swivel rotation.

### Approved and tested load capacity

Dynamic 80 kg

Static 100 kg

### Temperature range:

Continuous operation: -20 | +70°C

Short (10 min) exposure: -30 | +80°C


### Advantages of this Smooth drive wheel Swivel transport castor with brake:

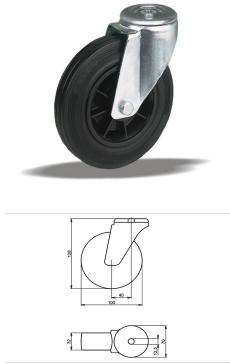
- ✓ wet floor
- ✓ reduces the transmission of both vibration and noise
- ✓ with low obstacles

## LIV SYSTEMS standard Swivel transport castor with brake + black rubber tyre Ø100 x W32mm for 80kg Prod ID: 31345

ID 31345: Castor overall height 128 mm | 4 mounting holes with distance #\$\$% mm | Wheel with roller bearing and black rubber tyre with hardness 80 ° Shore A | The double brake system, brakes the turning of the wheel and the swivel rotation. | Smooth drive

## Product information

- 
- Article code 2-980 ISO
  - SKU 31345
  - EAN 3838461313455



## Product description

standard Swivel transport castor with an overall height of 128 mm

Wheel diameter x width: 100 x 32 mm

Top plate with 4 mounting holes of 12,5 mm, mounting hole distance #\$\$ mm and top plate outer dimensions: 70 mm

Wheel with plain bearing and black rubber tyre with hardness 80 ° Shore A on polypropylene.

### Approved and tested load capacity

Dynamic 80 kg

Static 100 kg

### Temperature range:

Continous operation: -20 | +70°C

Short (10 min) exposure: -30 | +80°C

### Advantages of this Smooth drive wheel Swivel transport castor:

- ✓ wet floor
- ✓ reduces the transmission of both vibration and noise
- ✓ with low obstacles

## LIV SYSTEMS standard Swivel transport castor + black rubber tyre Ø100 x W32mm for 80kg Prod ID: 34135

ID 34135: Castor overall height 128 mm | 4 mounting holes with distance #\$\$ mm | Wheel with plain bearing and black rubber tyre with hardness 80 ° Shore A | Smooth drive wheel, for wet floor, rubber reduces the transmission of both vibration and noise, pe

## Product information

- Article code 2-973 L12
- SKU 34135
- EAN 3838461341359

## Specifications

The result of our quality is maximum performance!

[Close](#)

[Close](#)





## Product description

standard Swivel transport castor with an overall height of 128 mm

Wheel diameter x width: 100 x 32 mm

Top plate with 4 mounting holes of 12,5 mm, mounting hole distance #\$\$ mm and top plate outer dimensions: 70 mm

Wheel with roller bearing and black rubber tyre with hardness 80 ° Shore A on polypropylene.

### Approved and tested load capacity

Dynamic 80 kg

Static 100 kg

### Temperature range:

Continous operation: -20 | +70°C

Short (10 min) exposure: -30 | +80°C

### Advantages of this Smooth drive wheel Swivel transport castor:

- ✓ wet floor
- ✓ reduces the transmission of both vibration and noise
- ✓ with low obstacles

## LIV SYSTEMS standard Swivel transport castor + black rubber tyre Ø100 x W32mm for 80kg Prod ID: 34134

ID 34134: Castor overall height 128 mm | 4 mounting holes with distance #\$\$ mm | Wheel with roller bearing and black rubber tyre with hardness 80 ° Shore A | Smooth drive wheel, for wet floor, rubber reduces the transmission of both vibration and noise, p

## Product information

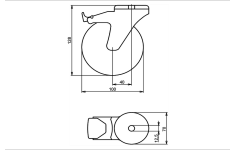
- Article code 2-966 L12
- SKU 34134
- EAN 3838461341342

## Specifications

The result of our quality is maximum performance!

[Close](#)

[Close](#)



## Product description

standard Swivel transport castor with brake with an overall height of 128 mm

Wheel diameter x width: 100 x 32 mm

Top plate with 4 mounting holes of 12,5 mm, mounting hole distance #\$\$ mm and top plate outer dimensions: 70 mm

Wheel with plain bearing and black rubber tyre with hardness 80 ° Shore A on polypropylene

the double brake system, brakes the turning of the wheel and the swivel rotation.

### Approved and tested load capacity

Dynamic 80 kg

Static 100 kg

### Temperature range:

Continious operation: -20 | +70°C

Short (10 min) exposure: -30 | +80°C

### Advantages of this Smooth drive wheel Swivel transport castor with brake:

- ✓ wet floor
- ✓ reduces the transmission of both vibration and noise
- ✓ with low obstacles

## LIV SYSTEMS standard Swivel transport castor with brake + black rubber tyre Ø100 x W32mm for 80kg Prod ID: 34205

ID 34205: Castor overall height 128 mm | 4 mounting holes with distance #\$\$ mm | Wheel with plain bearing and black rubber tyre with hardness 80 ° Shore A | The double brake system, brakes the turning of the wheel and the swivel rotation. | Smooth drive w

## Product information

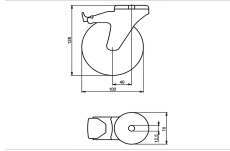
- Article code 2-987 L12
- SKU 34205
- EAN 3838461342059

## Specifications

The result of our quality is maximum performance!

[Close](#)

[Close](#)



## Product description

standard Swivel transport castor with brake with an overall height of 128 mm

Wheel diameter x width: 100 x 32 mm

Top plate with 4 mounting holes of 12,5 mm, mounting hole distance #\$\$ mm and top plate outer dimensions: 70 mm

Wheel with roller bearing and black rubber tyre with hardness 80 ° Shore A on polypropylene

the double brake system, brakes the turning of the wheel and the swivel rotation.

### Approved and tested load capacity

Dynamic 80 kg

Static 100 kg

### Temperature range:

Continious operation: -20 | +70°C

Short (10 min) exposure: -30 | +80°C

### Advantages of this Smooth drive wheel Swivel transport castor with brake:

- ✓ wet floor
- ✓ reduces the transmission of both vibration and noise
- ✓ with low obstacles

## LIV SYSTEMS standard Swivel transport castor with brake + black rubber tyre Ø100 x W32mm for 80kg Prod ID: 34204

ID 34204: Castor overall height 128 mm | 4 mounting holes with distance #\$\$ mm | Wheel with roller bearing and black rubber tyre with hardness 80 ° Shore A | The double brake system, brakes the turning of the wheel and the swivel rotation. | Smooth drive

## Product information

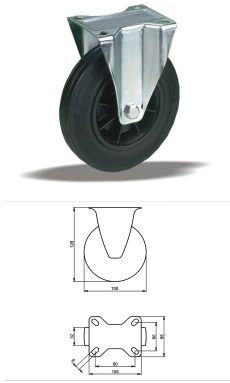
- Article code 2-980 L12
- SKU 34204
- EAN 3838461342042

## Specifications

The result of our quality is maximum performance!

[Close](#)

[Close](#)



## Product description

standard fixed transport castor with an overall height of 128 mm

Wheel diameter x width: 100 x 32 mm

Top plate with 4 mounting holes of 9 mm, mounting hole distance 80x60 mm and top plate outer dimensions: 105x85 mm

Wheel with plain bearing and black rubber tyre with hardness 80 ° Shore A on polypropylene.

### Approved and tested load capacity

Dynamic 80 kg

Static 100 kg

### Temperature range:

Continuous operation: -20 | +70°C

Short (10 min) exposure: -30 | +80°C

### Advantages of this Smooth drive wheel fixed transport castor:

- ✓ wet floor
- ✓ reduces the transmission of both vibration and noise
- ✓ with low obstacles

## LIV SYSTEMS standard fixed transport castor + black rubber tyre Ø100 x W32mm for 80kg Prod ID: 31483

ID 31483: Castor overall height 128 mm | 4 mounting holes with distance 80x60 mm | Wheel with plain bearing and black rubber tyre with hardness 80 ° Shore A | Smooth drive wheel, for wet floor, rubber reduces the transmission of both vibration and noise,

## Product information

- Article code 2-959 ISO
- SKU 31483
- EAN 3838461314834

## Specifications

The result of our quality is maximum performance!

[Close](#)

[Close](#)



## Product description

standard Wheel with roller bearing and black rubber tyre with hardness 80 ° Shore A on steel rim with electrogalvanization zinc plating anti-corrosion protection Cr6-free

Wheel diameter x width: 100 x 32 mm

Axle hole: 12 mm

Hub length: 44 mm

### Approved and tested load capacity

Dynamic 80 kg

Static 100 kg

### Temperature range:

Continuous operation: -20 | +70°C

Short (10 min) exposure: -30 | +80°C

### Advantages of this Comfortable drive wheel:

- ✓ to manoeuvre
- ✓ performance on uneven floor or obstacles
- ✓ and strong wheel systems

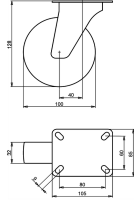
## LIV SYSTEMS standard transport wheel + black rubber tyre Ø100 x W32mm for 80kg Prod ID: 59308

ID 59308: standard Wheel with roller bearing and black rubber tyre with hardness 80 ° Shore A on steel rim with electrogalvanization zinc plating anti-corrosion protection Cr6-free | Axle hole: 12 mm | Hub length: 44 mm |

Comfortable drive, easy to manoeuvre

## Product information

- Article code 2-592 ISO
- SKU 59308
- EAN 3838461593086



## Product description

standard Swivel transport castor with an overall height of 128 mm

Wheel diameter x width: 100 x 32 mm

Top plate with 4 mounting holes of 9 mm, mounting hole distance 80x60 mm and top plate outer dimensions: 105x85 mm

Wheel with plain bearing and black rubber tyre with hardness 80 ° Shore A on steel rim with electrogalvanization zinc plating anti-corrosion protection Cr6-free.

### Approved and tested load capacity

Dynamic 80 kg

Static 100 kg

### Temperature range:

Continuous operation: -20 | +70°C

Short (10 min) exposure: -30 | +80°C

### Advantages of this Comfortable drive Swivel transport castor:

- ✓ to manoeuvre
- ✓ performance on uneven floor or obstacles
- ✓ and strong wheel systems

## LIV SYSTEMS standard Swivel transport castor + black rubber tyre Ø100 x W32mm for 80kg Prod ID: 31585

ID 31585: Castor overall height 128 mm | 4 mounting holes with distance 80x60 mm | Wheel with plain bearing and black rubber tyre with hardness 80 ° Shore A | Comfortable drive, easy to manoeuvre, good performance on uneven floor or obstacles, robust and

## Product information

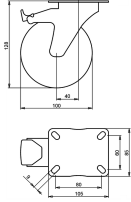
- Article code 2-124 A
- SKU 31585
- EAN 3838461315855

## Specifications

The result of our quality is maximum performance!

[Close](#)

[Close](#)



## Product description

standard Swivel transport castor with brake with an overall height of 128 mm

Wheel diameter x width: 100 x 32 mm

Top plate with 4 mounting holes of 9 mm, mounting hole distance 80x60 mm and top plate outer dimensions: 105X85 mm

Wheel with plain bearing and black rubber tyre with hardness 80 ° Shore A on steel rim with electrogalvanization zinc plating anti-corrosion protection Cr6-free the double brake system, brakes the turning of the wheel and the swivel rotation.

### Approved and tested load capacity

Dynamic 80 kg

Static 100 kg

### Temperature range:

Continious operation: -20 | +70°C

Short (10 min) exposure: -30 | +80°C

### Advantages of this Comfortable drive Swivel transport castor with brake:

- ✓ to manoeuvre
- ✓ performance on uneven floor or obstacles
- ✓ and strong wheel systems

## LIV SYSTEMS standard Swivel transport castor with brake + black rubber tyre Ø100 x W32mm for 80kg Prod ID: 30303

ID 30303: Castor overall height 128 mm | 4 mounting holes with distance 80x60 mm | Wheel with plain bearing and black rubber tyre with hardness 80 ° Shore A | The double brake system, brakes the turning of the wheel and the swivel rotation. | Comfortable

## Product information

- Article code 2-622 A
- SKU 30303
- EAN 3838461303036

## Specifications

The result of our quality is maximum performance!

[Close](#)

[Close](#)



## Product description

standard Swivel transport castor with an overall height of 128 mm

Wheel diameter x width: 100 x 32 mm

Top plate with 4 mounting holes of #\$\$ mm, mounting hole distance #\$\$ mm and top plate outer dimensions: 70 mm

Wheel with plain bearing and black rubber tyre with hardness 80 ° Shore A on steel rim with electrogalvanization zinc plating anti-corrosion protection Cr6-free.

### Approved and tested load capacity

Dynamic 80 kg

Static 100 kg

### Temperature range:

Continuous operation: -20 | +70°C

Short (10 min) exposure: -30 | +80°C


### Advantages of this Comfortable drive Swivel transport castor:

- ✓ to manoeuvre
- ✓ performance on uneven floor or obstacles
- ✓ and strong wheel systems

## LIV SYSTEMS standard Swivel transport castor + black rubber tyre Ø100 x W32mm for 80kg Prod ID: 31604

ID 31604: Castor overall height 128 mm | 4 mounting holes with distance #\$\$ mm | Wheel with plain bearing and black rubber tyre with hardness 80 ° Shore A | Comfortable drive, easy to manoeuvre, good performance on uneven floor or obstacles, robust and st

## Product information

- 
- Article code 2-187 A
  - SKU 31604
  - EAN 3838461316043





## Product description

standard Swivel transport castor with an overall height of 128 mm

Wheel diameter x width: 100 x 32 mm

Top plate with 4 mounting holes of #\$\$ mm, mounting hole distance #\$\$ mm and top plate outer dimensions: 70 mm

Wheel with roller bearing and black rubber tyre with hardness 80 ° Shore A on steel rim with electrogalvanization zinc plating anti-corrosion protection Cr6-free.

### Approved and tested load capacity

Dynamic 80 kg

Static 100 kg

### Temperature range:

Continuous operation: -20 | +70°C

Short (10 min) exposure: -30 | +80°C


### Advantages of this Comfortable drive Swivel transport castor:

- ✓ to manoeuvre
- ✓ performance on uneven floor or obstacles
- ✓ and strong wheel systems

## LIV SYSTEMS standard Swivel transport castor + black rubber tyre Ø100 x W32mm for 80kg Prod ID: 31595

ID 31595: Castor overall height 128 mm | 4 mounting holes with distance #\$\$ mm | Wheel with roller bearing and black rubber tyre with hardness 80 ° Shore A | Comfortable drive, easy to manoeuvre, good performance on uneven floor or obstacles, robust and s

## Product information

- 
- Article code 2-629 A
  - SKU 31595
  - EAN 3838461315954



## Product description

standard Swivel transport castor with brake with an overall height of 128 mm

Wheel diameter x width: 100 x 32 mm

Top plate with 4 mounting holes of #5 mm, mounting hole distance #50 mm and top plate outer dimensions: 70 mm

Wheel with plain bearing and black rubber tyre with hardness 80 ° Shore A on steel rim with electrogalvanization zinc plating anti-corrosion protection Cr6-free

the double brake system, brakes the turning of the wheel and the swivel rotation.

### Approved and tested load capacity

Dynamic 80 kg

Static 100 kg

### Temperature range:

Continuous operation: -20 | +70°C

Short (10 min) exposure: -30 | +80°C

### Advantages of this Comfortable drive Swivel transport castor with brake:

- ✓ to manoeuvre
- ✓ performance on uneven floor or obstacles
- ✓ and strong wheel systems

## LIV SYSTEMS standard Swivel transport castor with brake + black rubber tyre Ø100 x W32mm for 80kg Prod ID: 30374

ID 30374: Castor overall height 128 mm | 4 mounting holes with distance #50 mm | Wheel with plain bearing and black rubber tyre with hardness 80 ° Shore A | The double brake system, brakes the turning of the wheel and the swivel rotation. | Comfortable dr

## Product information



- Article code 2-595 A
- SKU 30374
- EAN 3838461303746



## Product description

standard Swivel transport castor with brake with an overall height of 128 mm

Wheel diameter x width: 100 x 32 mm

Top plate with 4 mounting holes of #5 mm, mounting hole distance #5 mm and top plate outer dimensions: 70 mm

Wheel with roller bearing and black rubber tyre with hardness 80 ° Shore A on steel rim with electrogalvanization zinc plating anti-corrosion protection Cr6-free

the double brake system, brakes the turning of the wheel and the swivel rotation.

### Approved and tested load capacity

Dynamic 80 kg

Static 100 kg

### Temperature range:

Continuous operation: -20 | +70°C

Short (10 min) exposure: -30 | +80°C

### Advantages of this Comfortable drive Swivel transport castor with brake:

- ✓ to manoeuvre
- ✓ performance on uneven floor or obstacles
- ✓ and strong wheel systems

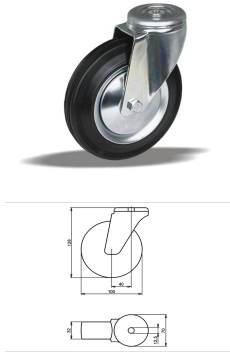
## LIV SYSTEMS standard Swivel transport castor with brake + black rubber tyre Ø100 x W32mm for 80kg Prod ID: 30373

ID 30373: Castor overall height 128 mm | 4 mounting holes with distance #5 mm | Wheel with roller bearing and black rubber tyre with hardness 80 ° Shore A | The double brake system, brakes the turning of the wheel and the swivel rotation. | Comfortable d

## Product information



- Article code 2-607 A
- SKU 30373
- EAN 3838461303739



## Product description

standard Swivel transport castor with an overall height of 128 mm

Wheel diameter x width: 100 x 32 mm

Top plate with 4 mounting holes of 12,5 mm, mounting hole distance #\$\$ mm and top plate outer dimensions: 70 mm

Wheel with plain bearing and black rubber tyre with hardness 80 ° Shore A on steel rim with electrogalvanization zinc plating anti-corrosion protection Cr6-free.

### Approved and tested load capacity

Dynamic 80 kg

Static 100 kg

### Temperature range:

Continous operation: -20 | +70°C

Short (10 min) exposure: -30 | +80°C

### Advantages of this Comfortable drive Swivel transport castor:

- ✓ to manoeuvre
- ✓ performance on uneven floor or obstacles
- ✓ and strong wheel systems

## LIV SYSTEMS standard Swivel transport castor + black rubber tyre Ø100 x W32mm for 80kg Prod ID: 34015

ID 34015: Castor overall height 128 mm | 4 mounting holes with distance #\$\$ mm | Wheel with plain bearing and black rubber tyre with hardness 80 ° Shore A | Comfortable drive, easy to manoeuvre, good performance on uneven floor or obstacles, robust and st

## Product information

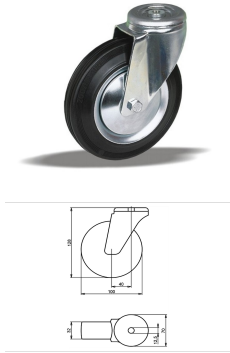
- Article code 2-187 L12
- SKU 34015
- EAN 3838461340154

## Specifications

The result of our quality is maximum performance!

[Close](#)

[Close](#)



## Product description

standard Swivel transport castor with an overall height of 128 mm

Wheel diameter x width: 100 x 32 mm

Top plate with 4 mounting holes of 12,5 mm, mounting hole distance #\$\$ mm and top plate outer dimensions: 70 mm

Wheel with roller bearing and black rubber tyre with hardness 80 ° Shore A on steel rim with electrogalvanization zinc plating anti-corrosion protection Cr6-free.

### Approved and tested load capacity

Dynamic 80 kg

Static 100 kg

### Temperature range:

Continious operation: -20 | +70°C

Short (10 min) exposure: -30 | +80°C

### Advantages of this Comfortable drive Swivel transport castor:

- ✓ to manoeuvre
- ✓ performance on uneven floor or obstacles
- ✓ and strong wheel systems

## LIV SYSTEMS standard Swivel transport castor + black rubber tyre Ø100 x W32mm for 80kg Prod ID: 34014

ID 34014: Castor overall height 128 mm | 4 mounting holes with distance #\$\$ mm | Wheel with roller bearing and black rubber tyre with hardness 80 ° Shore A | Comfortable drive, easy to manoeuvre, good performance on uneven floor or obstacles, robust and s

## Product information

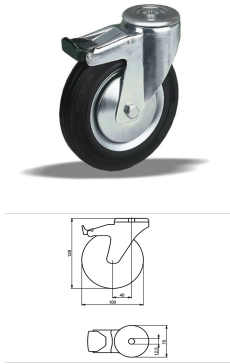
- Article code 2-629 L12
- SKU 34014
- EAN 3838461340147

## Specifications

The result of our quality is maximum performance!

[Close](#)

[Close](#)



## Product description

standard Swivel transport castor with brake with an overall height of 128 mm

Wheel diameter x width: 100 x 32 mm

Top plate with 4 mounting holes of 12,5 mm, mounting hole distance #\$\$ mm and top plate outer dimensions: 70 mm

Wheel with plain bearing and black rubber tyre with hardness 80 ° Shore A on steel rim with electrogalvanization zinc plating anti-corrosion protection Cr6-free the double brake system, brakes the turning of the wheel and the swivel rotation.

### Approved and tested load capacity

Dynamic 80 kg

Static 100 kg

### Temperature range:

Continious operation: -20 | +70°C

Short (10 min) exposure: -30 | +80°C

### Advantages of this Comfortable drive Swivel transport castor with brake:

- ✓ to manoeuvre
- ✓ performance on uneven floor or obstacles
- ✓ and strong wheel systems

## LIV SYSTEMS standard Swivel transport castor with brake + black rubber tyre Ø100 x W32mm for 80kg Prod ID: 34074

ID 34074: Castor overall height 128 mm | 4 mounting holes with distance #\$\$ mm | Wheel with plain bearing and black rubber tyre with hardness 80 ° Shore A | The double brake system, brakes the turning of the wheel and the swivel rotation. | Comfortable dr

## Product information

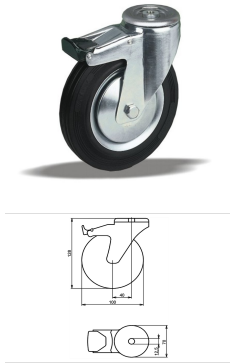
- Article code 2-595 L12
- SKU 34074
- EAN 3838461340741

## Specifications

The result of our quality is maximum performance!

[Close](#)

[Close](#)



## Product description

standard Swivel transport castor with brake with an overall height of 128 mm

Wheel diameter x width: 100 x 32 mm

Top plate with 4 mounting holes of 12,5 mm, mounting hole distance #\$\$ mm and top plate outer dimensions: 70 mm

Wheel with roller bearing and black rubber tyre with hardness 80 ° Shore A on steel rim with electrogalvanization zinc plating anti-corrosion protection Cr6-free the double brake system, brakes the turning of the wheel and the swivel rotation.

### Approved and tested load capacity

Dynamic 80 kg

Static 100 kg

### Temperature range:

Continious operation: -20 | +70°C

Short (10 min) exposure: -30 | +80°C

### Advantages of this Comfortable drive Swivel transport castor with brake:

- ✓ to manoeuvre
- ✓ performance on uneven floor or obstacles
- ✓ and strong wheel systems

## LIV SYSTEMS standard Swivel transport castor with brake + black rubber tyre Ø100 x W32mm for 80kg Prod ID: 34073

ID 34073: Castor overall height 128 mm | 4 mounting holes with distance #\$\$ mm | Wheel with roller bearing and black rubber tyre with hardness 80 ° Shore A | The double brake system, brakes the turning of the wheel and the swivel rotation. | Comfortable d

## Product information

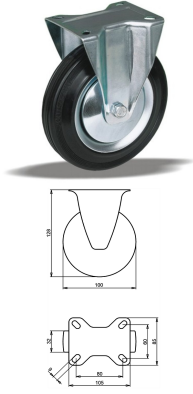
- Article code 2-607 L12
- SKU 34073
- EAN 3838461340734

## Specifications

The result of our quality is maximum performance!

[Close](#)

[Close](#)



## Product description

standard fixed transport castor with an overall height of 128 mm

Wheel diameter x width: 100 x 32 mm

Top plate with 4 mounting holes of 9 mm, mounting hole distance 80x60 mm and top plate outer dimensions: 105x85 mm

Wheel with plain bearing and black rubber tyre with hardness 80 ° Shore A on steel rim with electrogalvanization zinc plating anti-corrosion protection Cr6-free.

### Approved and tested load capacity

Dynamic 80 kg

Static 100 kg

### Temperature range:

Continuous operation: -20 | +70°C

Short (10 min) exposure: -30 | +80°C

### Advantages of this Comfortable drive fixed transport castor:

- ✓ to manoeuvre
- ✓ performance on uneven floor or obstacles
- ✓ and strong wheel systems

## LIV SYSTEMS standard fixed transport castor + black rubber tyre Ø100 x W32mm for 80kg Prod ID: 31633

ID 31633: Castor overall height 128 mm | 4 mounting holes with distance 80x60 mm | Wheel with plain bearing and black rubber tyre with hardness 80 ° Shore A |

Comfortable drive, easy to manoeuvre, good performance on uneven floor or obstacles, robust and

## Product information

- Article code 2-125 A
- SKU 31633
- EAN 3838461316333

## Specifications

The result of our quality is maximum performance!

**Алматы** (7273)495-231  
**Ангарск** (3955)60-70-56  
**Архангельск** (8182)63-90-72  
**Астрахань** (8512)99-46-04  
**Барнаул** (3852)73-04-60  
**Белгород** (4722)40-23-64  
**Благовещенск** (4162)22-76-07  
**Брянск** (4832)59-03-52  
**Владивосток** (423)249-28-31  
**Владикавказ** (8672)28-90-48  
**Владимир** (4922)49-43-18  
**Волгоград** (844)278-03-48  
**Вологда** (8172)26-41-59  
**Воронеж** (473)204-51-73  
**Екатеринбург** (343)384-55-89

**Иваново** (4932)77-34-06  
**Ижевск** (3412)26-03-58  
**Иркутск** (395)279-98-46  
**Казань** (843)206-01-48  
**Калининград** (4012)72-03-81  
**Калуга** (4842)92-23-67  
**Кемерово** (3842)65-04-62  
**Киров** (8332)68-02-04  
**Коломна** (4966)23-41-49  
**Кострома** (4942)77-07-48  
**Краснодар** (861)203-40-90  
**Красноярск** (391)204-63-61  
**Курск** (4712)77-13-04  
**Курган** (3522)50-90-47  
**Липецк** (4742)52-20-81

**Магнитогорск** (3519)55-03-13  
**Москва** (495)268-04-70  
**Мурманск** (8152)59-64-93  
**Набережные Челны** (8552)20-53-41  
**Нижний Новгород** (831)429-08-12  
**Новокузнецк** (3843)20-46-81  
**Ноябрьск** (3496)41-32-12  
**Новосибирск** (383)227-86-73  
**Омск** (3812)21-46-40  
**Орел** (4862)44-53-42  
**Оренбург** (3532)37-68-04  
**Краснодар** (861)203-40-90  
**Пенза** (8412)22-31-16  
**Петрозаводск** (8142)55-98-37  
**Псков** (8112)59-10-37  
**Пермь** (342)205-81-47

**Ростов-на-Дону** (863)308-18-15  
**Рязань** (4912)46-61-64  
**Самара** (846)206-03-16  
**Санкт-Петербург** (812)309-46-40  
**Саратов** (845)249-38-78  
**Сеvastополь** (8692)22-31-93  
**Саранск** (8342)22-96-24  
**Симферополь** (3652)67-13-56  
**Смоленск** (4812)29-41-54  
**Сочи** (862)225-72-31  
**Ставрополь** (8652)20-65-13  
**Сургут** (3462)77-98-35  
**Сыктывкар** (8212)25-95-17  
**Тамбов** (4752)50-40-97  
**Тверь** (4822)63-31-35

**Тольятти** (8482)63-91-07  
**Томск** (3822)98-41-53  
**Тула** (4872)33-79-87  
**Тюмень** (3452)66-21-18  
**Ульяновск** (8422)24-23-59  
**Улан-Удэ** (3012)59-97-51  
**Уфа** (347)229-48-12  
**Хабаровск** (4212)92-98-04  
**Чебоксары** (8352)28-53-07  
**Челябинск** (351)202-03-61  
**Ставрополь** (8652)20-65-13  
**Сургут** (3462)77-98-35  
**Сыктывкар** (8212)25-95-17  
**Якутск** (4112)23-90-97  
**Ярославль** (4852)69-52-93

Россия +7(495)268-04-70

Казахстан +7(7172)727-132

Киргизия +996(312)96-26-47

<https://liv.nt-rt.ru/> || [vis@nt-rt.ru](mailto:vis@nt-rt.ru)