

Алматы (7273)495-231
Ангарск (3955)60-70-56
Архангельск (8182)63-90-72
Астрахань (8512)99-46-04
Барнаул (3852)73-04-60
Белгород (4722)40-23-64
Благовещенск (4162)22-76-07
Брянск (4832)59-03-52
Владивосток (423)249-28-31
Владикавказ (8672)28-90-48
Владимир (4922)49-43-18
Волгоград (844)278-03-48
Вологда (8172)26-41-59
Воронеж (473)204-51-73
Екатеринбург (343)384-55-89

Иваново (4932)77-34-06
Ижевск (3412)26-03-58
Иркутск (395)279-98-46
Казань (843)206-01-48
Калининград (4012)72-03-81
Калуга (4842)92-23-67
Кемерово (3842)65-04-62
Киров (8332)68-02-04
Коломна (4966)23-41-49
Кострома (4942)77-07-48
Краснодар (861)203-40-90
Красноярск (391)204-63-61
Курск (4712)77-13-04
Курган (3522)50-90-47
Липецк (4742)52-20-81

Магнитогорск (3519)55-03-13
Москва (495)268-04-70
Мурманск (8152)59-64-93
Набережные Челны (8552)20-53-41
Нижний Новгород (831)429-08-12
Новокузнецк (3843)20-46-81
Ноябрьск (3496)41-32-12
Новосибирск (383)227-86-73
Омск (3812)21-46-40
Орел (4862)44-53-42
Оренбург (3532)37-68-04
Пенза (8412)22-31-16
Петрозаводск (8142)55-98-37
Псков (8112)59-10-37
Пермь (342)205-81-47

Ростов-на-Дону (863)308-18-15
Рязань (4912)46-61-64
Самара (846)206-03-16
Санкт-Петербург (812)309-46-40
Саратов (845)249-38-78
Севастополь (8692)22-31-93
Саранск (8342)22-96-24
Симферополь (3652)67-13-56
Смоленск (4812)29-41-54
Сочи (862)225-72-31
Ставрополь (8652)20-65-13
Сургут (3462)77-98-35
Сыктывкар (8212)25-95-17
Тамбов (4752)50-40-97
Тверь (4822)63-31-35

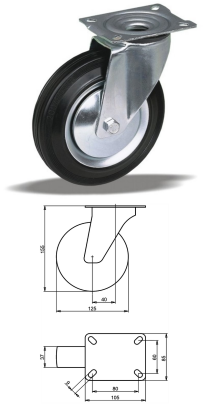
Тольятти (8482)63-91-07
Томск (3822)98-41-53
Тула (4872)33-79-87
Тюмень (3452)66-21-18
Ульяновск (8422)24-23-59
Улан-Удэ (3012)59-97-51
Уфа (347)229-48-12
Хабаровск (4212)92-98-04
Чебоксары (8352)28-53-07
Челябинск (351)202-03-61
Череповец (8202)49-02-64
Чита (3022)38-34-83
Якутск (4112)23-90-97
Ярославль (4852)69-52-93

Россия +7(495)268-04-70

Казахстан +7(7172)727-132

Киргизия +996(312)96-26-47

<https://liv.nt-rt.ru/> || vis@nt-rt.ru



Product description

standard Swivel transport castor with an overall height of 155 mm

Wheel diameter x width: 125 x 37 mm

Top plate with 4 mounting holes of 9 mm, mounting hole distance 80x60 mm and top plate outer dimensions: 105x85 mm

Wheel with roller bearing and black rubber tyre with hardness 80 ° Shore A on steel rim with electrogalvanization zinc plating anti-corrosion protection Cr6-free.

Approved and tested load capacity

Dynamic 130 kg

Static 160 kg

Temperature range:

Continuous operation: -20 | +70°C

Short (10 min) exposure: -30 | +80°C

Advantages of this Comfortable drive Swivel transport castor:

- ✓ to manoeuvre
- ✓ performance on uneven floor or obstacles
- ✓ and strong wheel systems

LIV SYSTEMS standard Swivel transport castor + black rubber tyre Ø125 x W37mm for 130kg Prod ID: 59319

ID 59319: Castor overall height 155 mm | 4 mounting holes with distance 80x60 mm | Wheel with roller bearing and black rubber tyre with hardness 80 ° Shore A | Comfortable drive, easy to manoeuvre, good performance on uneven floor or obstacles, robust and

Product information

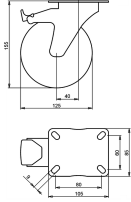
- Article code 2-587 ISO
- SKU 59319
- EAN 3838461593192

Specifications

The result of our quality is maximum performance!

[Close](#)

[Close](#)



Product description

standard Swivel transport castor with brake with an overall height of 155 mm

Wheel diameter x width: 125 x 32 mm

Top plate with 4 mounting holes of 9 mm, mounting hole distance 80x60 mm and top plate outer dimensions: 105X85 mm

Wheel with roller bearing and black rubber tyre with hardness 80 ° Shore A on steel rim with electrogalvanization zinc plating anti-corrosion protection Cr6-free the double brake system, brakes the turning of the wheel and the swivel rotation.

Approved and tested load capacity

Dynamic 130 kg

Static 160 kg

Temperature range:

Continuous operation: -20 | +70°C

Short (10 min) exposure: -30 | +80°C

Advantages of this Comfortable drive Swivel transport castor with brake:

- ✓ to manoeuvre
- ✓ performance on uneven floor or obstacles
- ✓ and strong wheel systems

LIV SYSTEMS standard Swivel transport castor with brake + black rubber tyre Ø125 x W32mm for 130kg Prod ID: 30304

ID 30304: Castor overall height 155 mm | 4 mounting holes with distance 80x60 mm | Wheel with roller bearing and black rubber tyre with hardness 80 ° Shore A | The double brake system, brakes the turning of the wheel and the swivel rotation. | Comfortable

Product information

- Article code 2-436 A
- SKU 30304
- EAN 3838461303043

Specifications

The result of our quality is maximum performance!

[Close](#)

[Close](#)



Product description

standard Swivel transport castor with an overall height of 155 mm

Wheel diameter x width: 125 x 37 mm

Top plate with 4 mounting holes of 4 mm, mounting hole distance 40 mm and top plate outer dimensions: 70 mm

Wheel with roller bearing and black rubber tyre with hardness 80 ° Shore A on steel rim with electrogalvanization zinc plating anti-corrosion protection Cr6-free.

Approved and tested load capacity

Dynamic 130 kg

Static 160 kg

Temperature range:

Continuous operation: -20 | +70°C

Short (10 min) exposure: -30 | +80°C


Advantages of this Comfortable drive Swivel transport castor:

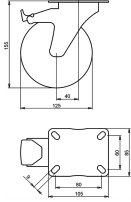
- ✓ to manoeuvre
- ✓ performance on uneven floor or obstacles
- ✓ and strong wheel systems

LIV SYSTEMS standard Swivel transport castor + black rubber tyre Ø125 x W37mm for 130kg Prod ID: 65138

ID 65138: Castor overall height 155 mm | 4 mounting holes with distance 40 mm | Wheel with roller bearing and black rubber tyre with hardness 80 ° Shore A | Comfortable drive, easy to manoeuvre, good performance on uneven floor or obstacles, robust and s

Product information

- 
- Article code 2-630
 - SKU 65138
 - EAN 3838461651380



Product description

standard Swivel transport castor with brake with an overall height of 155 mm

Wheel diameter x width: 125 x 37 mm

Top plate with 4 mounting holes of 9 mm, mounting hole distance 80x60 mm and top plate outer dimensions: 105x85 mm

Wheel with roller bearing and black rubber tyre with hardness 80 ° Shore A on polypropylene
the double brake system, brakes the turning of the wheel and the swivel rotation.

Approved and tested load capacity

Dynamic 130 kg

Static 160 kg

Temperature range:

Continuous operation: -20 | +70°C

Short (10 min) exposure: -30 | +80°C

Advantages of this Smooth drive wheel Swivel transport castor with brake:

- ✓ wet floor
- ✓ reduces the transmission of both vibration and noise
- ✓ with low obstacles

LIV SYSTEMS standard Swivel transport castor with brake + black rubber tyre Ø125 x W37mm for 130kg Prod ID: 31204

ID 31204: Castor overall height 155 mm | 4 mounting holes with distance 80x60 mm | Wheel with roller bearing and black rubber tyre with hardness 80 ° Shore A | The double brake system, brakes the turning of the wheel and the swivel rotation. | Smooth driv

Product information

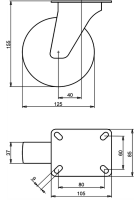
- Article code 2-930 ISO
- SKU 31204
- EAN 3838461312045

Specifications

The result of our quality is maximum performance!

[Close](#)

[Close](#)



Product description

standard Swivel castor with an overall height of 155 mm

Wheel diameter x width: 125 x 37 mm

Top plate with 4 mounting holes of 9 mm, mounting hole distance 80x60 mm and top plate outer dimensions: 105x85 mm

Wheel with plain bearing and grey rubber tyre with hardness 83 ° Shore A on polypropylene.

Approved and tested load capacity

Dynamic 130 kg

Static 160 kg

Temperature range:

Continuous operation: -20 | +70°C

Short (10 min) exposure: -30 | +80°C

Advantages of this Elegant trip Swivel castor:

- ✓ rubber is non-marking and leaves no marks on the floor
- ✓ reduces the transmission of both vibration and noise
- ✓ and outdoor use

LIV SYSTEMS standard Swivel castor + grey rubber tyre Ø125 x W37mm for 130kg Prod ID: 39244

ID 39244: Castor overall height 155 mm | 4 mounting holes with distance 80x60 mm | Wheel with plain bearing and grey rubber tyre with hardness 83 ° Shore A | Elegant trip, Grey rubber is non-marking and leaves no marks on the floor, rubber reduces the tra

Product information

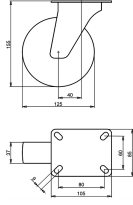
- Article code 2-923 ISO
- SKU 39244
- EAN 3838461392443

Specifications

The result of our quality is maximum performance!

[Close](#)

[Close](#)



Product description

standard Swivel transport castor with an overall height of 155 mm

Wheel diameter x width: 125 x 37 mm

Top plate with 4 mounting holes of 9 mm, mounting hole distance 80x60 mm and top plate outer dimensions: 105x85 mm

Wheel with roller bearing and black rubber tyre with hardness 80 ° Shore A on polypropylene.

Approved and tested load capacity

Dynamic 130 kg

Static 160 kg

Temperature range:

Continuous operation: -20 | +70°C

Short (10 min) exposure: -30 | +80°C

Advantages of this Smooth drive wheel Swivel transport castor:

- ✓ wet floor
- ✓ reduces the transmission of both vibration and noise
- ✓ with low obstacles

LIV SYSTEMS standard Swivel transport castor + black rubber tyre Ø125 x W37mm for 130kg Prod ID: 31123

ID 31123: Castor overall height 155 mm | 4 mounting holes with distance 80x60 mm | Wheel with roller bearing and black rubber tyre with hardness 80 ° Shore A | Smooth drive wheel, for wet floor, rubber reduces the transmission of both vibration and noise,

Product information

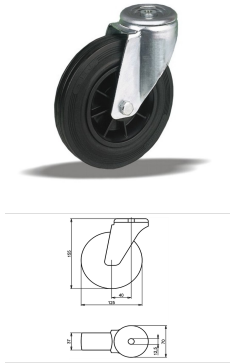
- Article code 2-916 ISO
- SKU 31123
- EAN 3838461311239

Specifications

The result of our quality is maximum performance!

[Close](#)

[Close](#)



Product description

standard Swivel transport castor with an overall height of 155 mm

Wheel diameter x width: 125 x 37 mm

Top plate with 4 mounting holes of 12,5 mm, mounting hole distance #\$\$ mm and top plate outer dimensions: 70 mm

Wheel with roller bearing and black rubber tyre with hardness 80 ° Shore A on polypropylene.

Approved and tested load capacity

Dynamic 130 kg

Static 160 kg

Temperature range:

Continous operation: -20 | +70°C

Short (10 min) exposure: -30 | +80°C

Advantages of this Smooth drive wheel Swivel transport castor:

- ✓ wet floor
- ✓ reduces the transmission of both vibration and noise
- ✓ with low obstacles

LIV SYSTEMS standard Swivel transport castor + black rubber tyre Ø125 x W37mm for 130kg Prod ID: 34143

ID 34143: Castor overall height 155 mm | 4 mounting holes with distance #\$\$ mm | Wheel with roller bearing and black rubber tyre with hardness 80 ° Shore A | Smooth drive wheel, for wet floor, rubber reduces the transmission of both vibration and noise, p

Product information

- Article code 2-967 L12
- SKU 34143
- EAN 3838461341434

Specifications

The result of our quality is maximum performance!

[Close](#)

[Close](#)



Product description

standard Wheel with roller bearing and black rubber tyre with hardness 80 ° Shore A on steel rim with electrogalvanization zinc plating anti-corrosion protection Cr6-free

Wheel diameter x width: 125 x 37 mm

Axle hole: 15 mm

Hub length: 44 mm

Approved and tested load capacity

Dynamic 130 kg

Static 160 kg

Temperature range:

Continuous operation: -20 | +70°C

Short (10 min) exposure: -30 | +80°C

Advantages of this Comfortable drive wheel:

- ✓ to manoeuvre
- ✓ performance on uneven floor or obstacles
- ✓ and strong wheel systems

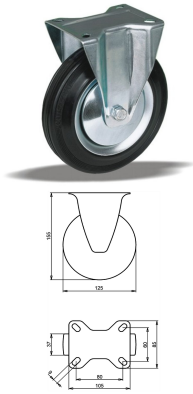
LIV SYSTEMS standard transport wheel + black rubber tyre Ø125 x W37mm for 130kg Prod ID: 59309

ID 59309: standard Wheel with roller bearing and black rubber tyre with hardness 80 ° Shore A on steel rim with electrogalvanization zinc plating anti-corrosion protection Cr6-free | Axle hole: 15 mm | Hub length: 44 mm |

Comfortable drive, easy to manoeuvre

Product information

- Article code 2-593 ISO
- SKU 59309
- EAN 3838461593093



Product description

standard fixed transport castor with an overall height of 155 mm

Wheel diameter x width: 125 x 37 mm

Top plate with 4 mounting holes of 9 mm, mounting hole distance 80x60 mm and top plate outer dimensions: 105x85 mm

Wheel with roller bearing and black rubber tyre with hardness 80 ° Shore A on steel rim with electrogalvanization zinc plating anti-corrosion protection Cr6-free.

Approved and tested load capacity

Dynamic 130 kg

Static 160 kg

Temperature range:

Continuous operation: -20 | +70°C

Short (10 min) exposure: -30 | +80°C

Advantages of this Comfortable drive fixed transport castor:

- ✓ to manoeuvre
- ✓ performance on uneven floor or obstacles
- ✓ and strong wheel systems

LIV SYSTEMS standard fixed transport castor + black rubber tyre Ø125 x W37mm for 130kg Prod ID: 59322

ID 59322: Castor overall height 155 mm | 4 mounting holes with distance 80x60 mm | Wheel with roller bearing and black rubber tyre with hardness 80 ° Shore A | Comfortable drive, easy to manoeuvre, good performance on uneven floor or obstacles, robust and

Product information

- Article code 2-590 ISO
- SKU 59322
- EAN 3838461593222

Specifications

The result of our quality is maximum performance!

[Close](#)

[Close](#)



Product description

standard Wheel with plain bearing and grey rubber tyre with hardness 83 ° Shore A on polypropylene

Wheel diameter x width: 125 x 37 mm

Axle hole: 15 mm

Hub length: 44 mm

Approved and tested load capacity

Dynamic 130 kg

Static 160 kg

Temperature range:

Continous operation: -20 | +70°C

Short (10 min) exposure: -30 | +80°C

Advantages of this Elegant trip wheel:

- ✓ rubber is non-marking and leaves no marks on the floor
- ✓ reduces the transmission of both vibration and noise
- ✓ and outdoor use

LIV SYSTEMS standard wheel + grey rubber tyre Ø125 x W37mm for 130kg

Prod ID: 36344

ID 36344:standard Wheel with plain bearing and grey rubber tyre with hardness 83 ° Shore A on polypropylene | Axle hole: 15 mm | Hub length: 44 mm | Elegant trip, Grey rubber is non-marking and leaves no marks on the floor, rubber reduces the transmission

Product information

- Article code 2-944
- SKU 36344
- EAN 3838461363443



Product description

standard Wheel with roller bearing and grey rubber tyre with hardness 83 ° Shore A on polypropylene

Wheel diameter x width: 125 x 37 mm

Axle hole: 15 mm

Hub length: 44 mm

Approved and tested load capacity

Dynamic 130 kg

Static 160 kg

Temperature range:

Continuous operation: -20 | +70°C

Short (10 min) exposure: -30 | +80°C

Advantages of this Elegant trip wheel:

- ✓ rubber is non-marking and leaves no marks on the floor
- ✓ reduces the transmission of both vibration and noise
- ✓ and outdoor use

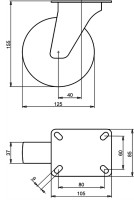
LIV SYSTEMS standard wheel + grey rubber tyre Ø125 x W37mm for 130kg

Prod ID: 33355

ID 33355: standard Wheel with roller bearing and grey rubber tyre with hardness 83 ° Shore A on polypropylene | Axle hole: 15 mm | Hub length: 44 mm | Elegant trip, Grey rubber is non-marking and leaves no marks on the floor, rubber reduces the transmissio

Product information

- Article code 2-944 A
- SKU 33355
- EAN 3838461333552



Product description

standard Swivel castor with an overall height of 155 mm

Wheel diameter x width: 125 x 37 mm

Top plate with 4 mounting holes of 9 mm, mounting hole distance 80x60 mm and top plate outer dimensions: 105x85 mm

Wheel with roller bearing and grey rubber tyre with hardness 83 ° Shore A on polypropylene.

Approved and tested load capacity

Dynamic 130 kg

Static 160 kg

Temperature range:

Continuous operation: -20 | +70°C

Short (10 min) exposure: -30 | +80°C

Advantages of this Elegant trip Swivel castor:

- ✓ rubber is non-marking and leaves no marks on the floor
- ✓ reduces the transmission of both vibration and noise
- ✓ and outdoor use

LIV SYSTEMS standard Swivel castor + grey rubber tyre Ø125 x W37mm for 130kg Prod ID: 33353

ID 33353: Castor overall height 155 mm | 4 mounting holes with distance 80x60 mm | Wheel with roller bearing and grey rubber tyre with hardness 83 ° Shore A | Elegant trip, Grey rubber is non-marking and leaves no marks on the floor, rubber reduces the tr

Product information

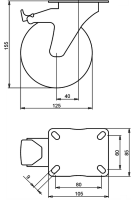
- Article code 2-916 ISO
- SKU 33353
- EAN 3838461333538

Specifications

The result of our quality is maximum performance!

[Close](#)

[Close](#)



Product description

standard Swivel castor with brake with an overall height of 155 mm
 Wheel diameter x width: 125 x 37 mm
 Top plate with 4 mounting holes of 9 mm, mounting hole distance 80x60 mm and top plate outer dimensions: 105x85 mm
 Wheel with plain bearing and grey rubber tyre with hardness 83 ° Shore A on polypropylene
 the double brake system, brakes the turning of the wheel and the swivel rotation.

Approved and tested load capacity

Dynamic 130 kg
 Static 160 kg

Temperature range:

Continuous operation: -20 | +70°C
 Short (10 min) exposure: -30 | +80°C

Advantages of this Elegant trip Swivel castor with brake:

- ✓ rubber is non-marking and leaves no marks on the floor
- ✓ reduces the transmission of both vibration and noise
- ✓ and outdoor use

LIV SYSTEMS standard Swivel castor with brake + grey rubber tyre Ø125 x W37mm for 130kg Prod ID: 39245

ID 39245: Castor overall height 155 mm | 4 mounting holes with distance 80x60 mm | Wheel with plain bearing and grey rubber tyre with hardness 83 ° Shore A | The double brake system, brakes the turning of the wheel and the swivel rotation. | Elegant trip,

Product information

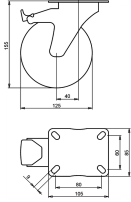
- Article code 2-937 ISO
- SKU 39245
- EAN 3838461392450

Specifications

The result of our quality is maximum performance!

[Close](#)

[Close](#)



Product description

standard Swivel castor with brake with an overall height of 155 mm
 Wheel diameter x width: 125 x 37 mm
 Top plate with 4 mounting holes of 9 mm, mounting hole distance 80x60 mm and top plate outer dimensions: 105x85 mm
 Wheel with roller bearing and grey rubber tyre with hardness 83 ° Shore A on polypropylene
 the double brake system, brakes the turning of the wheel and the swivel rotation.

Approved and tested load capacity

Dynamic 130 kg
 Static 160 kg

Temperature range:

Continuous operation: -20 | +70°C
 Short (10 min) exposure: -30 | +80°C

Advantages of this Elegant trip Swivel castor with brake:

- ✓ rubber is non-marking and leaves no marks on the floor
- ✓ reduces the transmission of both vibration and noise
- ✓ and outdoor use

LIV SYSTEMS standard Swivel castor with brake + grey rubber tyre Ø125 x W37mm for 130kg Prod ID: 39425

ID 39425: Castor overall height 155 mm | 4 mounting holes with distance 80x60 mm | Wheel with roller bearing and grey rubber tyre with hardness 83 ° Shore A | The double brake system, brakes the turning of the wheel and the swivel rotation. | Elegant trip

Product information

- Article code 2-930 ISO
- SKU 39425
- EAN 3838461394256

Specifications

The result of our quality is maximum performance!

[Close](#)

[Close](#)



Product description

standard Swivel castor with an overall height of 155 mm

Wheel diameter x width: 125 x 37 mm

Top plate with 4 mounting holes of #5 mm, mounting hole distance #50 mm and top plate outer dimensions: 70 mm

Wheel with plain bearing and grey rubber tyre with hardness 83 ° Shore A on polypropylene.

Approved and tested load capacity

Dynamic 130 kg

Static 160 kg

Temperature range:

Continuous operation: -20 | +70°C

Short (10 min) exposure: -30 | +80°C

Advantages of this Elegant trip Swivel castor:

- ✓ rubber is non-marking and leaves no marks on the floor
- ✓ reduces the transmission of both vibration and noise
- ✓ and outdoor use

LIV SYSTEMS standard Swivel castor + grey rubber tyre Ø125 x W37mm for 130kg Prod ID: 39473

ID 39473: Castor overall height 155 mm | 4 mounting holes with distance #50 mm | Wheel with plain bearing and grey rubber tyre with hardness 83 ° Shore A | Elegant trip, Grey rubber is non-marking and leaves no marks on the floor, rubber reduces the trans

Product information

- Article code 2-974 ISO
- SKU 39473
- EAN 3838461394737



Product description

standard Swivel castor with an overall height of 155 mm

Wheel diameter x width: 125 x 37 mm

Top plate with 4 mounting holes of #\$\$ mm, mounting hole distance #\$\$ mm and top plate outer dimensions: 70 mm

Wheel with roller bearing and grey rubber tyre with hardness 83 ° Shore A on polypropylene.

Approved and tested load capacity

Dynamic 130 kg

Static 160 kg

Temperature range:

Continuous operation: -20 | +70°C

Short (10 min) exposure: -30 | +80°C

Advantages of this Elegant trip Swivel castor:

- ✓ rubber is non-marking and leaves no marks on the floor
- ✓ reduces the transmission of both vibration and noise
- ✓ and outdoor use

LIV SYSTEMS standard Swivel castor + grey rubber tyre Ø125 x W37mm for 130kg Prod ID: 39465

ID 39465: Castor overall height 155 mm | 4 mounting holes with distance #\$\$ mm | Wheel with roller bearing and grey rubber tyre with hardness 83 ° Shore A | Elegant trip, Grey rubber is non-marking and leaves no marks on the floor, rubber reduces the tran

Product information

- Article code 2-967 ISO
- SKU 39465
- EAN 3838461394652



Product description

standard Swivel castor with brake with an overall height of 155 mm

Wheel diameter x width: 125 x 37 mm

Top plate with 4 mounting holes of 40 mm, mounting hole distance 70 mm and top plate outer dimensions: 70 mm

Wheel with plain bearing and grey rubber tyre with hardness 83 ° Shore A on polypropylene the double brake system, brakes the turning of the wheel and the swivel rotation.

Approved and tested load capacity

Dynamic 130 kg

Static 160 kg

Temperature range:

Continuous operation: -20 | +70°C

Short (10 min) exposure: -30 | +80°C


Advantages of this Elegant trip Swivel castor with brake:

- ✓ rubber is non-marking and leaves no marks on the floor
- ✓ reduces the transmission of both vibration and noise
- ✓ and outdoor use

LIV SYSTEMS standard Swivel castor with brake + grey rubber tyre Ø125 x W37mm for 130kg Prod ID: 39515

ID 39515: Castor overall height 155 mm | 4 mounting holes with distance 70 mm | Wheel with plain bearing and grey rubber tyre with hardness 83 ° Shore A | The double brake system, brakes the turning of the wheel and the swivel rotation. | Elegant trip, G

Product information

- 
- Article code 2-988 ISO
 - SKU 39515
 - EAN 3838461395154



Product description

standard Swivel castor with brake with an overall height of 155 mm

Wheel diameter x width: 125 x 37 mm

Top plate with 4 mounting holes of 40 mm, mounting hole distance 70 mm and top plate outer dimensions: 70 mm

Wheel with roller bearing and grey rubber tyre with hardness 83 ° Shore A on polypropylene the double brake system, brakes the turning of the wheel and the swivel rotation.

Approved and tested load capacity

Dynamic 130 kg

Static 160 kg

Temperature range:

Continuous operation: -20 | +70°C

Short (10 min) exposure: -30 | +80°C

Advantages of this Elegant trip Swivel castor with brake:

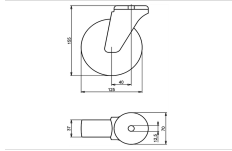
- ✓ rubber is non-marking and leaves no marks on the floor
- ✓ reduces the transmission of both vibration and noise
- ✓ and outdoor use

LIV SYSTEMS standard Swivel castor with brake + grey rubber tyre Ø125 x W37mm for 130kg Prod ID: 39514

ID 39514: Castor overall height 155 mm | 4 mounting holes with distance 70 mm | Wheel with roller bearing and grey rubber tyre with hardness 83 ° Shore A | The double brake system, brakes the turning of the wheel and the swivel rotation. | Elegant trip,

Product information

- 
- Article code 2-981 ISO
 - SKU 39514
 - EAN 3838461395147



Product description

standard Swivel castor with an overall height of 155 mm

Wheel diameter x width: 125 x 37 mm

Top plate with 4 mounting holes of 12,5 mm, mounting hole distance #\$\$ mm and top plate outer dimensions: 70 mm

Wheel with plain bearing and grey rubber tyre with hardness 83 ° Shore A on polypropylene.

Approved and tested load capacity

Dynamic 130 kg

Static 160 kg

Temperature range:

Continuous operation: -20 | +70°C

Short (10 min) exposure: -30 | +80°C

Advantages of this Elegant trip Swivel castor:

- ✓ rubber is non-marking and leaves no marks on the floor
- ✓ reduces the transmission of both vibration and noise
- ✓ and outdoor use

LIV SYSTEMS standard Swivel castor + grey rubber tyre Ø125 x W37mm for 130kg Prod ID: 39555

ID 39555: Castor overall height 155 mm | 4 mounting holes with distance #\$\$ mm | Wheel with plain bearing and grey rubber tyre with hardness 83 ° Shore A | Elegant trip, Grey rubber is non-marking and leaves no marks on the floor, rubber reduces the trans

Product information

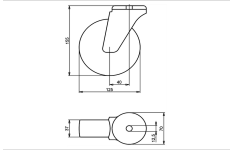
- Article code 2-974 L12
- SKU 39555
- EAN 3838461395550

Specifications

The result of our quality is maximum performance!

[Close](#)

[Close](#)



Product description

standard Swivel castor with an overall height of 155 mm

Wheel diameter x width: 125 x 37 mm

Top plate with 4 mounting holes of 12,5 mm, mounting hole distance #\$\$ mm and top plate outer dimensions: 70 mm

Wheel with roller bearing and grey rubber tyre with hardness 83 ° Shore A on polypropylene.

Approved and tested load capacity

Dynamic 130 kg

Static 160 kg

Temperature range:

Continious operation: -20 | +70°C

Short (10 min) exposure: -30 | +80°C

Advantages of this Elegant trip Swivel castor:

- ✓ rubber is non-marking and leaves no marks on the floor
- ✓ reduces the transmission of both vibration and noise
- ✓ and outdoor use

LIV SYSTEMS standard Swivel castor + grey rubber tyre Ø125 x W37mm for 130kg Prod ID: 38614

ID 38614: Castor overall height 155 mm | 4 mounting holes with distance #\$\$ mm | Wheel with roller bearing and grey rubber tyre with hardness 83 ° Shore A | Elegant trip, Grey rubber is non-marking and leaves no marks on the floor, rubber reduces the tran

Product information

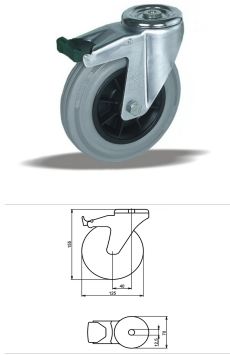
- Article code 2-967 L12
- SKU 38614
- EAN 3838461386145

Specifications

The result of our quality is maximum performance!

[Close](#)

[Close](#)



Product description

standard Swivel castor with brake with an overall height of 155 mm
 Wheel diameter x width: 125 x 37 mm
 Top plate with 4 mounting holes of 12,5 mm, mounting hole distance #\$\$ mm and top plate outer dimensions: 70 mm
 Wheel with roller bearing and grey rubber tyre with hardness 83 ° Shore A on polypropylene
 the double brake system, brakes the turning of the wheel and the swivel rotation.

Approved and tested load capacity

Dynamic 130 kg
 Static 160 kg

Temperature range:

Continuous operation: -20 | +70°C
 Short (10 min) exposure: -30 | +80°C

Advantages of this Elegant trip Swivel castor with brake:

- ✓ rubber is non-marking and leaves no marks on the floor
- ✓ reduces the transmission of both vibration and noise
- ✓ and outdoor use

LIV SYSTEMS standard Swivel castor with brake + grey rubber tyre Ø125 x W37mm for 130kg Prod ID: 38615

ID 38615: Castor overall height 155 mm | 4 mounting holes with distance #\$\$ mm | Wheel with roller bearing and grey rubber tyre with hardness 83 ° Shore A | The double brake system, brakes the turning of the wheel and the swivel rotation. | Elegant trip,

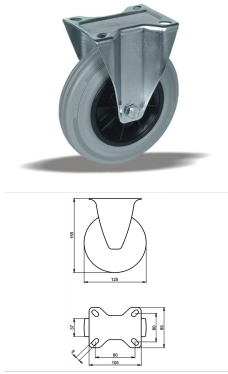
Product information

- Article code 2-981 L12
- SKU 38615
- EAN 3838461386152

Specifications

The result of our quality is maximum performance!

[Close](#)
[Close](#)



Product description

standard Fixed castor with an overall height of 155 mm

Wheel diameter x width: 125 x 37 mm

Top plate with 4 mounting holes of 9 mm, mounting hole distance 80x60 mm and top plate outer dimensions: 105x85 mm

Wheel with plain bearing and grey rubber tyre with hardness 83 ° Shore A on polypropylene.

Approved and tested load capacity

Dynamic 130 kg

Static 160 kg

Temperature range:

Continuous operation: -20 | +70°C

Short (10 min) exposure: -30 | +80°C

Advantages of this Elegant trip Fixed castor:

- ✓ rubber is non-marking and leaves no marks on the floor
- ✓ reduces the transmission of both vibration and noise
- ✓ and outdoor use

LIV SYSTEMS standard Fixed castor + grey rubber tyre Ø125 x W37mm for 130kg Prod ID: 39643

ID 39643: Castor overall height 155 mm | 4 mounting holes with distance 80x60 mm | Wheel with plain bearing and grey rubber tyre with hardness 83 ° Shore A | Elegant trip, Grey rubber is non-marking and leaves no marks on the floor, rubber reduces the tra

Product information

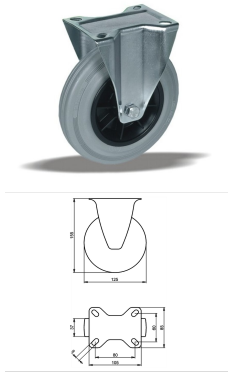
- Article code 2-960 ISO
- SKU 39643
- EAN 3838461396434

Specifications

The result of our quality is maximum performance!

[Close](#)

[Close](#)



Product description

standard Fixed castor with an overall height of 155 mm

Wheel diameter x width: 125 x 37 mm

Top plate with 4 mounting holes of 9 mm, mounting hole distance 80x60 mm and top plate outer dimensions: 105x85 mm

Wheel with roller bearing and grey rubber tyre with hardness 83 ° Shore A on polypropylene.

Approved and tested load capacity

Dynamic 130 kg

Static 160 kg

Temperature range:

Continuous operation: -20 | +70°C

Short (10 min) exposure: -30 | +80°C

Advantages of this Elegant trip Fixed castor:

- ✓ rubber is non-marking and leaves no marks on the floor
- ✓ reduces the transmission of both vibration and noise
- ✓ and outdoor use

LIV SYSTEMS standard Fixed castor + grey rubber tyre Ø125 x W37mm for 130kg Prod ID: 33383

ID 33383: Castor overall height 155 mm | 4 mounting holes with distance 80x60 mm | Wheel with roller bearing and grey rubber tyre with hardness 83 ° Shore A | Elegant trip, Grey rubber is non-marking and leaves no marks on the floor, rubber reduces the tr

Product information

- Article code 2-953 ISO
- SKU 33383
- EAN 3838461333835

Specifications

The result of our quality is maximum performance!

[Close](#)

[Close](#)



Product description

standard Wheel with plain bearing and black rubber tyre with hardness 80 ° Shore A on polypropylene

Wheel diameter x width: 125 x 37 mm

Axle hole: 15 mm

Hub length: 44 mm

Approved and tested load capacity

Dynamic 130 kg

Static 160 kg

Temperature range:

Continous operation: -20 | +70°C

Short (10 min) exposure: -30 | +80°C

Advantages of this Smooth drive wheel wheel:

- ✓ wet floor
- ✓ reduces the transmission of both vibration and noise
- ✓ with low obstacles

LIV SYSTEMS standard transport wheel + black rubber tyre Ø125 x W37mm for 130kg Prod ID: 30225

ID 30225: standard Wheel with plain bearing and black rubber tyre with hardness 80 ° Shore A on polypropylene | Axle hole: 15 mm | Hub length: 44 mm | Smooth drive wheel, for wet floor, rubber reduces the transmission of both vibration and noise, perfect w

Product information

- Article code 2-944 ISO
- SKU 30225
- EAN 3838461302251



Product description

standard Wheel with roller bearing and black rubber tyre with hardness 80 ° Shore A on polypropylene

Wheel diameter x width: 125 x 37 mm

Axle hole: 15 mm

Hub length: 44 mm

Approved and tested load capacity

Dynamic 130 kg

Static 160 kg

Temperature range:

Continuous operation: -20 | +70°C

Short (10 min) exposure: -30 | +80°C

Advantages of this Smooth drive wheel wheel:

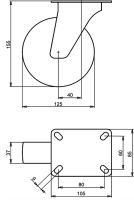
- ✓ wet floor
- ✓ reduces the transmission of both vibration and noise
- ✓ with low obstacles

LIV SYSTEMS standard transport wheel + black rubber tyre Ø125 x W37mm for 130kg Prod ID: 30223

ID 30223: standard Wheel with roller bearing and black rubber tyre with hardness 80 ° Shore A on polypropylene | Axle hole: 15 mm | Hub length: 44 mm | Smooth drive wheel, for wet floor, rubber reduces the transmission of both vibration and noise, perfect

Product information

- Article code 2-944 A
- SKU 30223
- EAN 3838461302237



Product description

standard Swivel transport castor with an overall height of 155 mm

Wheel diameter x width: 125 x 37 mm

Top plate with 4 mounting holes of 9 mm, mounting hole distance 80x60 mm and top plate outer dimensions: 105x85 mm

Wheel with plain bearing and black rubber tyre with hardness 80 ° Shore A on polypropylene.

Approved and tested load capacity

Dynamic 130 kg

Static 160 kg

Temperature range:

Continuous operation: -20 | +70°C

Short (10 min) exposure: -30 | +80°C

Advantages of this Smooth drive wheel Swivel transport castor:

- ✓ wet floor
- ✓ reduces the transmission of both vibration and noise
- ✓ with low obstacles

LIV SYSTEMS standard Swivel transport castor + black rubber tyre Ø125 x W37mm for 130kg Prod ID: 31124

ID 31124: Castor overall height 155 mm | 4 mounting holes with distance 80x60 mm | Wheel with plain bearing and black rubber tyre with hardness 80 ° Shore A | Smooth drive wheel, for wet floor, rubber reduces the transmission of both vibration and noise,

Product information

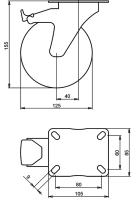
- Article code 2-923 ISO
- SKU 31124
- EAN 3838461311246

Specifications

The result of our quality is maximum performance!

[Close](#)

[Close](#)



Product description

standard Swivel transport castor with brake with an overall height of 155 mm

Wheel diameter x width: 125 x 37 mm

Top plate with 4 mounting holes of 9 mm, mounting hole distance 80x60 mm and top plate outer dimensions: 105x85 mm

Wheel with plain bearing and black rubber tyre with hardness 80 ° Shore A on polypropylene

the double brake system, brakes the turning of the wheel and the swivel rotation.

Approved and tested load capacity

Dynamic 130 kg

Static 160 kg

Temperature range:

Continuous operation: -20 | +70°C

Short (10 min) exposure: -30 | +80°C

Advantages of this Smooth drive wheel Swivel transport castor with brake:

- ✓ wet floor
- ✓ reduces the transmission of both vibration and noise
- ✓ with low obstacles

LIV SYSTEMS standard Swivel transport castor with brake + black rubber tyre Ø125 x W37mm for 130kg Prod ID: 31205

ID 31205: Castor overall height 155 mm | 4 mounting holes with distance 80x60 mm | Wheel with plain bearing and black rubber tyre with hardness 80 ° Shore A | The double brake system, brakes the turning of the wheel and the swivel rotation. | Smooth drive

Product information

- Article code 2-937 ISO
- SKU 31205
- EAN 3838461312052

Specifications

The result of our quality is maximum performance!

[Close](#)

[Close](#)



Product description

standard Swivel transport castor with an overall height of 155 mm

Wheel diameter x width: 125 x 37 mm

Top plate with 4 mounting holes of #\$\$ mm, mounting hole distance #\$\$ mm and top plate outer dimensions: 70 mm

Wheel with plain bearing and black rubber tyre with hardness 80 ° Shore A on polypropylene.

Approved and tested load capacity

Dynamic 130 kg

Static 160 kg

Temperature range:

Continuous operation: -20 | +70°C

Short (10 min) exposure: -30 | +80°C

Advantages of this Smooth drive wheel Swivel transport castor:

- ✓ wet floor
- ✓ reduces the transmission of both vibration and noise
- ✓ with low obstacles

LIV SYSTEMS standard Swivel transport castor + black rubber tyre Ø125 x W37mm for 130kg Prod ID: 31285

ID 31285: Castor overall height 155 mm | 4 mounting holes with distance #\$\$ mm | Wheel with plain bearing and black rubber tyre with hardness 80 ° Shore A | Smooth drive wheel, for wet floor, rubber reduces the transmission of both vibration and noise, pe

Product information

- Article code 2-974 ISO
- SKU 31285
- EAN 3838461312854



Product description

standard Swivel transport castor with an overall height of 155 mm

Wheel diameter x width: 125 x 37 mm

Top plate with 4 mounting holes of #\$\$ mm, mounting hole distance #\$\$ mm and top plate outer dimensions: 70 mm

Wheel with roller bearing and black rubber tyre with hardness 80 ° Shore A on polypropylene.

Approved and tested load capacity

Dynamic 130 kg

Static 160 kg

Temperature range:

Continuous operation: -20 | +70°C

Short (10 min) exposure: -30 | +80°C

Advantages of this Smooth drive wheel Swivel transport castor:

- ✓ wet floor
- ✓ reduces the transmission of both vibration and noise
- ✓ with low obstacles

LIV SYSTEMS standard Swivel transport castor + black rubber tyre Ø125 x W37mm for 130kg Prod ID: 31274

ID 31274: Castor overall height 155 mm | 4 mounting holes with distance #\$\$ mm | Wheel with roller bearing and black rubber tyre with hardness 80 ° Shore A | Smooth drive wheel, for wet floor, rubber reduces the transmission of both vibration and noise, p

Product information

- Article code 2-967 ISO
- SKU 31274
- EAN 3838461312748



Product description

standard Swivel transport castor with brake with an overall height of 155 mm

Wheel diameter x width: 125 x 37 mm

Top plate with 4 mounting holes of #\$\$% mm, mounting hole distance #\$\$% mm and top plate outer dimensions: 70 mm

Wheel with plain bearing and black rubber tyre with hardness 80 ° Shore A on polypropylene the double brake system, brakes the turning of the wheel and the swivel rotation.

Approved and tested load capacity

Dynamic 130 kg

Static 160 kg

Temperature range:

Continuous operation: -20 | +70°C

Short (10 min) exposure: -30 | +80°C


Advantages of this Smooth drive wheel Swivel transport castor with brake:

- ✓ wet floor
- ✓ reduces the transmission of both vibration and noise
- ✓ with low obstacles

LIV SYSTEMS standard Swivel transport castor with brake + black rubber tyre Ø125 x W37mm for 130kg Prod ID: 31365

ID 31365: Castor overall height 155 mm | 4 mounting holes with distance #\$\$% mm | Wheel with plain bearing and black rubber tyre with hardness 80 ° Shore A | The double brake system, brakes the turning of the wheel and the swivel rotation. | Smooth drive w

Product information

- 
- Article code 2-988 ISO
 - SKU 31365
 - EAN 3838461313653



Product description

standard Swivel transport castor with brake with an overall height of 155 mm

Wheel diameter x width: 125 x 37 mm

Top plate with 4 mounting holes of #\$\$% mm, mounting hole distance #\$\$% mm and top plate outer dimensions: 70 mm

Wheel with roller bearing and black rubber tyre with hardness 80 ° Shore A on polypropylene the double brake system, brakes the turning of the wheel and the swivel rotation.

Approved and tested load capacity

Dynamic 130 kg

Static 160 kg

Temperature range:

Continuous operation: -20 | +70°C

Short (10 min) exposure: -30 | +80°C


Advantages of this Smooth drive wheel Swivel transport castor with brake:

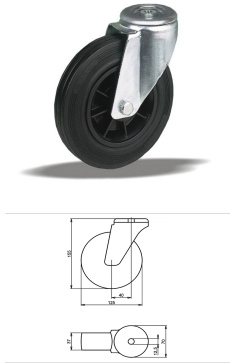
- ✓ wet floor
- ✓ reduces the transmission of both vibration and noise
- ✓ with low obstacles

LIV SYSTEMS standard Swivel transport castor with brake + black rubber tyre Ø125 x W37mm for 130kg Prod ID: 31364

ID 31364: Castor overall height 155 mm | 4 mounting holes with distance #\$\$% mm | Wheel with roller bearing and black rubber tyre with hardness 80 ° Shore A | The double brake system, brakes the turning of the wheel and the swivel rotation. | Smooth drive

Product information

- 
- Article code 2-981 ISO
 - SKU 31364
 - EAN 3838461313646



Product description

standard Swivel transport castor with an overall height of 155 mm

Wheel diameter x width: 125 x 37 mm

Top plate with 4 mounting holes of 12,5 mm, mounting hole distance #\$\$ mm and top plate outer dimensions: 70 mm

Wheel with plain bearing and black rubber tyre with hardness 80 ° Shore A on polypropylene.

Approved and tested load capacity

Dynamic 130 kg

Static 160 kg

Temperature range:

Continuous operation: -20 | +70°C

Short (10 min) exposure: -30 | +80°C

Advantages of this Smooth drive wheel Swivel transport castor:

- ✓ wet floor
- ✓ reduces the transmission of both vibration and noise
- ✓ with low obstacles

LIV SYSTEMS standard Swivel transport castor + black rubber tyre Ø125 x W37mm for 130kg Prod ID: 34145

ID 34145: Castor overall height 155 mm | 4 mounting holes with distance #\$\$ mm | Wheel with plain bearing and black rubber tyre with hardness 80 ° Shore A | Smooth drive wheel, for wet floor, rubber reduces the transmission of both vibration and noise, pe

Product information

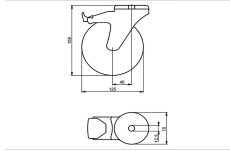
- Article code 2-974 L12
- SKU 34145
- EAN 3838461341458

Specifications

The result of our quality is maximum performance!

[Close](#)

[Close](#)



Product description

standard Swivel transport castor with brake with an overall height of 155 mm

Wheel diameter x width: 125 x 37 mm

Top plate with 4 mounting holes of 12,5 mm, mounting hole distance #\$\$ mm and top plate outer dimensions: 70 mm

Wheel with plain bearing and black rubber tyre with hardness 80 ° Shore A on polypropylene

the double brake system, brakes the turning of the wheel and the swivel rotation.

Approved and tested load capacity

Dynamic 130 kg

Static 160 kg

Temperature range:

Continious operation: -20 | +70°C

Short (10 min) exposure: -30 | +80°C

Advantages of this Smooth drive wheel Swivel transport castor with brake:

- ✓ wet floor
- ✓ reduces the transmission of both vibration and noise
- ✓ with low obstacles

LIV SYSTEMS standard Swivel transport castor with brake + black rubber tyre Ø125 x W37mm for 130kg Prod ID: 34215

ID 34215: Castor overall height 155 mm | 4 mounting holes with distance #\$\$ mm | Wheel with plain bearing and black rubber tyre with hardness 80 ° Shore A | The double brake system, brakes the turning of the wheel and the swivel rotation. | Smooth drive w

Product information

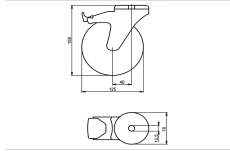
- Article code 2-988 L12
- SKU 34215
- EAN 3838461342158

Specifications

The result of our quality is maximum performance!

[Close](#)

[Close](#)



Product description

standard Swivel transport castor with brake with an overall height of 155 mm
 Wheel diameter x width: 125 x 37 mm
 Top plate with 4 mounting holes of 12,5 mm, mounting hole distance #\$\$ mm and top plate outer dimensions: 70 mm
 Wheel with roller bearing and black rubber tyre with hardness 80 ° Shore A on polypropylene
 the double brake system, brakes the turning of the wheel and the swivel rotation.

Approved and tested load capacity

Dynamic 130 kg
 Static 160 kg

Temperature range:

Continious operation: -20 | +70°C
 Short (10 min) exposure: -30 | +80°C

Advantages of this Smooth drive wheel Swivel transport castor with brake:

- ✓ wet floor
- ✓ reduces the transmission of both vibration and noise
- ✓ with low obstacles

LIV SYSTEMS standard Swivel transport castor with brake + black rubber tyre Ø125 x W37mm for 130kg Prod ID: 34214

ID 34214: Castor overall height 155 mm | 4 mounting holes with distance #\$\$ mm | Wheel with roller bearing and black rubber tyre with hardness 80 ° Shore A | The double brake system, brakes the turning of the wheel and the swivel rotation. | Smooth drive

Product information

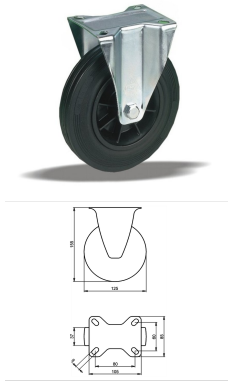
- Article code 2-981 L12
- SKU 34214
- EAN 3838461342141

Specifications

The result of our quality is maximum performance!

[Close](#)

[Close](#)



Product description

standard fixed transport castor with an overall height of 155 mm

Wheel diameter x width: 125 x 37 mm

Top plate with 4 mounting holes of 9 mm, mounting hole distance 80x60 mm and top plate outer dimensions: 105x85 mm

Wheel with plain bearing and black rubber tyre with hardness 80 ° Shore A on polypropylene.

Approved and tested load capacity

Dynamic 130 kg

Static 160 kg

Temperature range:

Continuous operation: -20 | +70°C

Short (10 min) exposure: -30 | +80°C

Advantages of this Smooth drive wheel fixed transport castor:

- ✓ wet floor
- ✓ reduces the transmission of both vibration and noise
- ✓ with low obstacles

LIV SYSTEMS standard fixed transport castor + black rubber tyre Ø125 x W37mm for 130kg Prod ID: 31485

ID 31485: Castor overall height 155 mm | 4 mounting holes with distance 80x60 mm | Wheel with plain bearing and black rubber tyre with hardness 80 ° Shore A | Smooth drive wheel, for wet floor, rubber reduces the transmission of both vibration and noise,

Product information

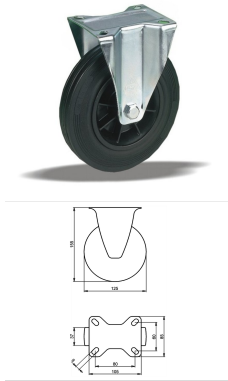
- Article code 2-960 ISO
- SKU 31485
- EAN 3838461314858

Specifications

The result of our quality is maximum performance!

[Close](#)

[Close](#)



Product description

standard fixed transport castor with an overall height of 155 mm

Wheel diameter x width: 125 x 37 mm

Top plate with 4 mounting holes of 9 mm, mounting hole distance 80x60 mm and top plate outer dimensions: 105x85 mm

Wheel with roller bearing and black rubber tyre with hardness 80 ° Shore A on polypropylene.

Approved and tested load capacity

Dynamic 130 kg

Static 160 kg

Temperature range:

Continuous operation: -20 | +70°C

Short (10 min) exposure: -30 | +80°C

Advantages of this Smooth drive wheel fixed transport castor:

- ✓ wet floor
- ✓ reduces the transmission of both vibration and noise
- ✓ with low obstacles

LIV SYSTEMS standard fixed transport castor + black rubber tyre Ø125 x W37mm for 130kg Prod ID: 31484

ID 31484: Castor overall height 155 mm | 4 mounting holes with distance 80x60 mm | Wheel with roller bearing and black rubber tyre with hardness 80 ° Shore A | Smooth drive wheel, for wet floor, rubber reduces the transmission of both vibration and noise,

Product information

- Article code 2-953 ISO
- SKU 31484
- EAN 3838461314841

Specifications

The result of our quality is maximum performance!

[Close](#)

[Close](#)



Product description

standard Wheel with plain bearing and black rubber tyre with hardness 80 ° Shore A on steel rim with electrogalvanization zinc plating anti-corrosion protection Cr6-free

Wheel diameter x width: 125 x 37 mm

Axle hole: 15 mm

Hub length: 44 mm

Approved and tested load capacity

Dynamic 130 kg

Static 160 kg

Temperature range:

Continuous operation: -20 | +70°C

Short (10 min) exposure: -30 | +80°C

Advantages of this Comfortable drive wheel:

- ✓ to manoeuvre
- ✓ performance on uneven floor or obstacles
- ✓ and strong wheel systems

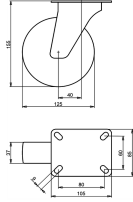
LIV SYSTEMS standard transport wheel + black rubber tyre Ø125 x W37mm for 130kg Prod ID: 61776

ID 61776: standard Wheel with plain bearing and black rubber tyre with hardness 80 ° Shore A on steel rim with electrogalvanization zinc plating anti-corrosion protection Cr6-free | Axle hole: 15 mm | Hub length: 44 mm |

Comfortable drive, easy to manoeuvre

Product information

- Article code 2-197 ISO
- SKU 61776
- EAN 3838461617768



Product description

standard Swivel transport castor with an overall height of 155 mm

Wheel diameter x width: 125 x 37 mm

Top plate with 4 mounting holes of 9 mm, mounting hole distance 80x60 mm and top plate outer dimensions: 105x85 mm

Wheel with plain bearing and black rubber tyre with hardness 80 ° Shore A on steel rim with electrogalvanization zinc plating anti-corrosion protection Cr6-free.

Approved and tested load capacity

Dynamic 130 kg

Static 160 kg

Temperature range:

Continuous operation: -20 | +70°C

Short (10 min) exposure: -30 | +80°C

Advantages of this Comfortable drive Swivel transport castor:

- ✓ to manoeuvre
- ✓ performance on uneven floor or obstacles
- ✓ and strong wheel systems

LIV SYSTEMS standard Swivel transport castor + black rubber tyre Ø125 x W37mm for 130kg Prod ID: 62391

ID 62391: Castor overall height 155 mm | 4 mounting holes with distance 80x60 mm | Wheel with plain bearing and black rubber tyre with hardness 80 ° Shore A | Comfortable drive, easy to manoeuvre, good performance on uneven floor or obstacles, robust and

Product information

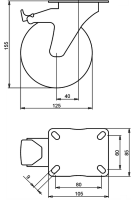
- Article code 2-189 ISO
- SKU 62391
- EAN 3838461623912

Specifications

The result of our quality is maximum performance!

[Close](#)

[Close](#)



Product description

standard Swivel transport castor with brake with an overall height of 155 mm

Wheel diameter x width: 125 x 37 mm

Top plate with 4 mounting holes of 9 mm, mounting hole distance 80x60 mm and top plate outer dimensions: 105x85 mm

Wheel with plain bearing and black rubber tyre with hardness 80 ° Shore A on steel rim with electrogalvanization zinc plating anti-corrosion protection Cr6-free the double brake system, brakes the turning of the wheel and the swivel rotation.

Approved and tested load capacity

Dynamic 130 kg

Static 160 kg

Temperature range:

Continuous operation: -20 | +70°C

Short (10 min) exposure: -30 | +80°C

Advantages of this Comfortable drive Swivel transport castor with brake:

- ✓ to manoeuvre
- ✓ performance on uneven floor or obstacles
- ✓ and strong wheel systems

LIV SYSTEMS standard Swivel transport castor with brake + black rubber tyre Ø125 x W37mm for 130kg Prod ID: 30305

ID 30305: Castor overall height 155 mm | 4 mounting holes with distance 80x60 mm | Wheel with plain bearing and black rubber tyre with hardness 80 ° Shore A | The double brake system, brakes the turning of the wheel and the swivel rotation. | Comfortable

Product information

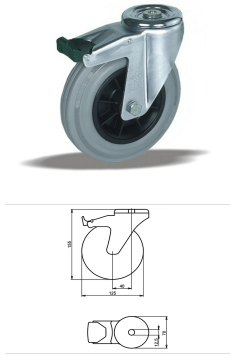
- Article code 2-623 A
- SKU 30305
- EAN 3838461303050

Specifications

The result of our quality is maximum performance!

[Close](#)

[Close](#)



Product description

standard Swivel castor with brake with an overall height of 155 mm
 Wheel diameter x width: 125 x 37 mm
 Top plate with 4 mounting holes of 12,5 mm, mounting hole distance #\$\$ mm and top plate outer dimensions: 70 mm
 Wheel with plain bearing and grey rubber tyre with hardness 83 ° Shore A on polypropylene
 the double brake system, brakes the turning of the wheel and the swivel rotation.

Approved and tested load capacity

Dynamic 130 kg
 Static 160 kg

Temperature range:

Continuous operation: -20 | +70°C
 Short (10 min) exposure: -30 | +80°C

Advantages of this Elegant trip Swivel castor with brake:

- ✓ rubber is non-marking and leaves no marks on the floor
- ✓ reduces the transmission of both vibration and noise
- ✓ and outdoor use

LIV SYSTEMS standard Swivel castor with brake + grey rubber tyre Ø125 x W37mm for 130kg Prod ID: 39603

ID 39603: Castor overall height 155 mm | 4 mounting holes with distance #\$\$ mm | Wheel with plain bearing and grey rubber tyre with hardness 83 ° Shore A | The double brake system, brakes the turning of the wheel and the swivel rotation. | Elegant trip, G

Product information

- Article code 2-988 L12
- SKU 39603
- EAN 3838461396038

Specifications

The result of our quality is maximum performance!

[Close](#)
[Close](#)



Product description

standard Swivel transport castor with brake with an overall height of 155 mm

Wheel diameter x width: 125 x 37 mm

Top plate with 4 mounting holes of #5 mm, mounting hole distance #50 mm and top plate outer dimensions: 70 mm

Wheel with plain bearing and black rubber tyre with hardness 80 ° Shore A on steel rim with electrogalvanization zinc plating anti-corrosion protection Cr6-free

the double brake system, brakes the turning of the wheel and the swivel rotation.

Approved and tested load capacity

Dynamic 130 kg

Static 160 kg

Temperature range:

Continuous operation: -20 | +70°C

Short (10 min) exposure: -30 | +80°C

Advantages of this Comfortable drive Swivel transport castor with brake:

- ✓ to manoeuvre
- ✓ performance on uneven floor or obstacles
- ✓ and strong wheel systems

LIV SYSTEMS standard Swivel transport castor with brake + black rubber tyre Ø125 x W37mm for 130kg Prod ID: 30385

ID 30385: Castor overall height 155 mm | 4 mounting holes with distance #50 mm | Wheel with plain bearing and black rubber tyre with hardness 80 ° Shore A | The double brake system, brakes the turning of the wheel and the swivel rotation. | Comfortable dr

Product information



- Article code 2-596 A
- SKU 30385
- EAN 3838461303852



Product description

standard Swivel transport castor with brake with an overall height of 155 mm

Wheel diameter x width: 125 x 37 mm

Top plate with 4 mounting holes of #5 mm, mounting hole distance #50 mm and top plate outer dimensions: 70 mm

Wheel with roller bearing and black rubber tyre with hardness 80 ° Shore A on steel rim with electrogalvanization zinc plating anti-corrosion protection Cr6-free

the double brake system, brakes the turning of the wheel and the swivel rotation.

Approved and tested load capacity

Dynamic 130 kg

Static 160 kg

Temperature range:

Continuous operation: -20 | +70°C

Short (10 min) exposure: -30 | +80°C

Advantages of this Comfortable drive Swivel transport castor with brake:

- ✓ to manoeuvre
- ✓ performance on uneven floor or obstacles
- ✓ and strong wheel systems

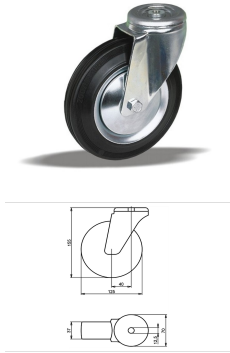
LIV SYSTEMS standard Swivel transport castor with brake + black rubber tyre Ø125 x W37mm for 130kg Prod ID: 30384

ID 30384: Castor overall height 155 mm | 4 mounting holes with distance #50 mm | Wheel with roller bearing and black rubber tyre with hardness 80 ° Shore A | The double brake system, brakes the turning of the wheel and the swivel rotation. | Comfortable d

Product information



- Article code 2-608 A
- SKU 30384
- EAN 3838461303845



Product description

standard Swivel transport castor with an overall height of 155 mm

Wheel diameter x width: 125 x 37 mm

Top plate with 4 mounting holes of 12,5 mm, mounting hole distance #\$\$ mm and top plate outer dimensions: 70 mm

Wheel with plain bearing and black rubber tyre with hardness 80 ° Shore A on steel rim with electrogalvanization zinc plating anti-corrosion protection Cr6-free.

Approved and tested load capacity

Dynamic 130 kg

Static 160 kg

Temperature range:

Continous operation: -20 | +70°C

Short (10 min) exposure: -30 | +80°C

Advantages of this Comfortable drive Swivel transport castor:

- ✓ to manoeuvre
- ✓ performance on uneven floor or obstacles
- ✓ and strong wheel systems

LIV SYSTEMS standard Swivel transport castor + black rubber tyre Ø125 x W37mm for 130kg Prod ID: 34024

ID 34024: Castor overall height 155 mm | 4 mounting holes with distance #\$\$ mm | Wheel with plain bearing and black rubber tyre with hardness 80 ° Shore A | Comfortable drive, easy to manoeuvre, good performance on uneven floor or obstacles, robust and st

Product information

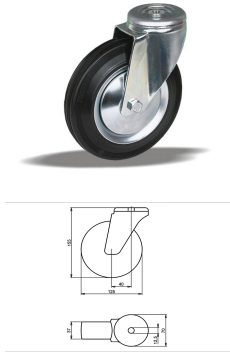
- Article code 2-193 L12
- SKU 34024
- EAN 3838461340246

Specifications

The result of our quality is maximum performance!

[Close](#)

[Close](#)



Product description

standard Swivel transport castor with an overall height of 155 mm

Wheel diameter x width: 125 x 37 mm

Top plate with 4 mounting holes of 12,5 mm, mounting hole distance #\$\$ mm and top plate outer dimensions: 70 mm

Wheel with roller bearing and black rubber tyre with hardness 80 ° Shore A on steel rim with electrogalvanization zinc plating anti-corrosion protection Cr6-free.

Approved and tested load capacity

Dynamic 130 kg

Static 160 kg

Temperature range:

Continuous operation: -20 | +70°C

Short (10 min) exposure: -30 | +80°C

Advantages of this Comfortable drive Swivel transport castor:

- ✓ to manoeuvre
- ✓ performance on uneven floor or obstacles
- ✓ and strong wheel systems

LIV SYSTEMS standard Swivel transport castor + black rubber tyre Ø125 x W37mm for 130kg Prod ID: 34023

ID 34023: Castor overall height 155 mm | 4 mounting holes with distance #\$\$ mm | Wheel with roller bearing and black rubber tyre with hardness 80 ° Shore A | Comfortable drive, easy to manoeuvre, good performance on uneven floor or obstacles, robust and s

Product information

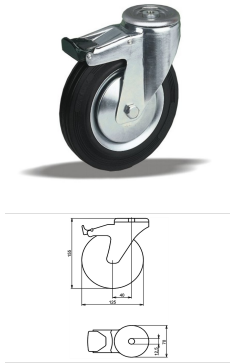
- Article code 2-630 L12
- SKU 34023
- EAN 3838461340239

Specifications

The result of our quality is maximum performance!

[Close](#)

[Close](#)



Product description

standard Swivel transport castor with brake with an overall height of 155 mm

Wheel diameter x width: 125 x 37 mm

Top plate with 4 mounting holes of 12,5 mm, mounting hole distance #\$\$ mm and top plate outer dimensions: 70 mm

Wheel with plain bearing and black rubber tyre with hardness 80 ° Shore A on steel rim with electrogalvanization zinc plating anti-corrosion protection Cr6-free the double brake system, brakes the turning of the wheel and the swivel rotation.

Approved and tested load capacity

Dynamic 130 kg

Static 160 kg

Temperature range:

Continious operation: -20 | +70°C

Short (10 min) exposure: -30 | +80°C

Advantages of this Comfortable drive Swivel transport castor with brake:

- ✓ to manoeuvre
- ✓ performance on uneven floor or obstacles
- ✓ and strong wheel systems

LIV SYSTEMS standard Swivel transport castor with brake + black rubber tyre Ø125 x W37mm for 130kg Prod ID: 34083

ID 34083: Castor overall height 155 mm | 4 mounting holes with distance #\$\$ mm | Wheel with plain bearing and black rubber tyre with hardness 80 ° Shore A | The double brake system, brakes the turning of the wheel and the swivel rotation. | Comfortable dr

Product information

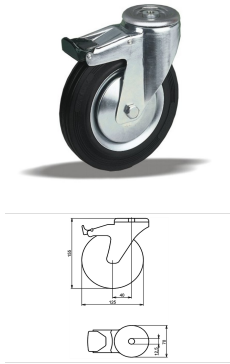
- Article code 2-596 L12
- SKU 34083
- EAN 3838461340833

Specifications

The result of our quality is maximum performance!

[Close](#)

[Close](#)



Product description

standard Swivel transport castor with brake with an overall height of 155 mm

Wheel diameter x width: 125 x 37 mm

Top plate with 4 mounting holes of 12,5 mm, mounting hole distance #\$\$ mm and top plate outer dimensions: 70 mm

Wheel with roller bearing and black rubber tyre with hardness 80 ° Shore A on steel rim with electrogalvanization zinc plating anti-corrosion protection Cr6-free the double brake system, brakes the turning of the wheel and the swivel rotation.

Approved and tested load capacity

Dynamic 130 kg

Static 160 kg

Temperature range:

Continious operation: -20 | +70°C

Short (10 min) exposure: -30 | +80°C

Advantages of this Comfortable drive Swivel transport castor with brake:

- ✓ to manoeuvre
- ✓ performance on uneven floor or obstacles
- ✓ and strong wheel systems

LIV SYSTEMS standard Swivel transport castor with brake + black rubber tyre Ø125 x W37mm for 130kg Prod ID: 34075

ID 34075: Castor overall height 155 mm | 4 mounting holes with distance #\$\$ mm | Wheel with roller bearing and black rubber tyre with hardness 80 ° Shore A | The double brake system, brakes the turning of the wheel and the swivel rotation. | Comfortable d

Product information

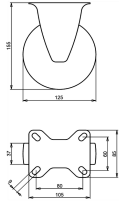
- Article code 2-608 L12
- SKU 34075
- EAN 3838461340758

Specifications

The result of our quality is maximum performance!

[Close](#)

[Close](#)



Product description

standard fixed transport castor with an overall height of 155 mm

Wheel diameter x width: 125 x 37 mm

Top plate with 4 mounting holes of 9 mm, mounting hole distance 80x60 mm and top plate outer dimensions: 105x85 mm

Wheel with plain bearing and black rubber tyre with hardness 80 ° Shore A on steel rim with electrogalvanization zinc plating anti-corrosion protection Cr6-free.

Approved and tested load capacity

Dynamic 130 kg

Static 160 kg

Temperature range:

Continuous operation: -20 | +70°C

Short (10 min) exposure: -30 | +80°C

Advantages of this Comfortable drive fixed transport castor:

- ✓ to manoeuvre
- ✓ performance on uneven floor or obstacles
- ✓ and strong wheel systems

LIV SYSTEMS standard fixed transport castor + black rubber tyre Ø125 x W37mm for 130kg Prod ID: 62401

ID 62401: Castor overall height 155 mm | 4 mounting holes with distance 80x60 mm | Wheel with plain bearing and black rubber tyre with hardness 80 ° Shore A | Comfortable drive, easy to manoeuvre, good performance on uneven floor or obstacles, robust and

Product information

- Article code 2-199 ISO
- SKU 62401
- EAN 3838461624018

Specifications

The result of our quality is maximum performance!

Алматы (7273)495-231
Ангарск (3955)60-70-56
Архангельск (8182)63-90-72
Астрахань (8512)99-46-04
Барнаул (3852)73-04-60
Белгород (4722)40-23-64
Благовещенск (4162)22-76-07
Брянск (4832)59-03-52
Владивосток (423)249-28-31
Владикавказ (8672)28-90-48
Владимир (4922)49-43-18
Волгоград (844)278-03-48
Вологда (8172)26-41-59
Воронеж (473)204-51-73
Екатеринбург (343)384-55-89

Иваново (4932)77-34-06
Ижевск (3412)26-03-58
Иркутск (395)279-98-46
Казань (843)206-01-48
Калининград (4012)72-03-81
Калуга (4842)92-23-67
Кемерово (3842)65-04-62
Киров (8332)68-02-04
Коломна (4966)23-41-49
Кострома (4942)77-07-48
Краснодар (861)203-40-90
Красноярск (391)204-63-61
Курск (4712)77-13-04
Курган (3522)50-90-47
Липецк (4742)52-20-81

Россия +7(495)268-04-70

Магнитогорск (3519)55-03-13
Москва (495)268-04-70
Мурманск (8152)59-64-93
Набережные Челны (8552)20-53-41
Нижний Новгород (831)429-08-12
Новокузнецк (3843)20-46-81
Ноябрьск (3496)41-32-12
Новосибирск (383)227-86-73
Омск (3812)21-46-40
Орел (4862)44-53-42
Оренбург (3532)37-68-04
Пенза (8412)22-31-16
Петрозаводск (8142)55-98-37
Перск (8112)59-10-37
Пермь (342)205-81-47

Казахстан +7(7172)727-132

Ростов-на-Дону (863)308-18-15
Рязань (4912)46-61-64
Самара (846)206-03-16
Санкт-Петербург (812)309-46-40
Саратов (845)249-38-78
Севастополь (8692)22-31-93
Саранск (8342)22-96-24
Симферополь (3652)67-13-56
Смоленск (4812)29-41-54
Сочи (862)225-72-31
Ставрополь (8652)20-65-13
Сургут (3462)77-98-35
Сыктывкар (8212)25-95-17
Тамбов (4752)50-40-97
Тверь (4822)63-31-35

Киргизия +996(312)96-26-47

Тольятти (8482)63-91-07
Томск (3822)98-41-53
Тула (4872)33-79-87
Тюмень (3452)66-21-18
Ульяновск (8422)24-23-59
Улан-Удэ (3012)59-97-51
Уфа (347)229-48-12
Хабаровск (4212)92-98-04
Чебоксары (8352)28-53-07
Челябинск (351)202-03-61
Череповец (8202)49-02-64
Чита (3022)38-34-83
Якутск (4112)23-90-97
Ярославль (4852)69-52-93

<https://liv.nt-rt.ru/> || vis@nt-rt.ru