

Алматы (7273)495-231
Ангарск (3955)60-70-56
Архангельск (8182)63-90-72
Астрахань (8512)99-46-04
Барнаул (3852)73-04-60
Белгород (4722)40-23-64
Благовещенск (4162)22-76-07
Брянск (4832)59-03-52
Владивосток (423)249-28-31
Владикавказ (8672)28-90-48
Владимир (4922)49-43-18
Волгоград (844)278-03-48
Вологда (8172)26-41-59
Воронеж (473)204-51-73
Екатеринбург (343)384-55-89

Иваново (4932)77-34-06
Ижевск (3412)26-03-58
Иркутск (395)279-98-46
Казань (843)206-01-48
Калининград (4012)72-03-81
Калуга (4842)92-23-67
Кемерово (3842)65-04-62
Киров (8332)68-02-04
Коломна (4966)23-41-49
Кострома (4942)77-07-48
Краснодар (861)203-40-90
Красноярск (391)204-63-61
Курск (4712)77-13-04
Курган (3522)50-90-47
Липецк (4742)52-20-81

Магнитогорск (3519)55-03-13
Москва (495)268-04-70
Мурманск (8152)59-64-93
Набережные Челны (8552)20-53-41
Нижний Новгород (831)429-08-12
Новокузнецк (3843)20-46-81
Ноябрьск (3496)41-32-12
Новосибирск (383)227-86-73
Омск (3812)21-46-40
Орел (4862)44-53-42
Оренбург (3532)37-68-04
Пенза (8412)22-31-16
Петрозаводск (8142)55-98-37
Псков (8112)59-10-37
Пермь (342)205-81-47

Ростов-на-Дону (863)308-18-15
Рязань (4912)46-61-64
Самара (846)206-03-16
Санкт-Петербург (812)309-46-40
Саратов (845)249-38-78
Севастополь (8692)22-31-93
Саранск (8342)22-96-24
Симферополь (3652)67-13-56
Смоленск (4812)29-41-54
Сочи (862)225-72-31
Ставрополь (8652)20-65-13
Сургут (3462)77-98-35
Сыктывкар (8212)25-95-17
Тамбов (4752)50-40-97
Тверь (4822)63-31-35

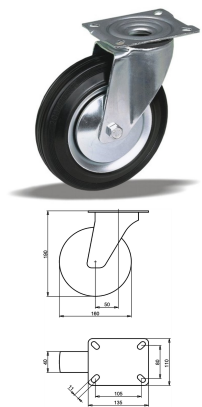
Тольятти (8482)63-91-07
Томск (3822)98-41-53
Тула (4872)33-79-87
Тюмень (3452)66-21-18
Ульяновск (8422)24-23-59
Улан-Удэ (3012)59-97-51
Уфа (347)229-48-12
Хабаровск (4212)92-98-04
Чебоксары (8352)28-53-07
Челябинск (351)202-03-61
Череповец (8202)49-02-64
Чита (3022)38-34-83
Якутск (4112)23-90-97
Ярославль (4852)69-52-93

Россия +7(495)268-04-70

Казахстан +7(7172)727-132

Киргизия +996(312)96-26-47

<https://liv.nt-rt.ru/> || vis@nt-rt.ru



Product description

standard Swivel transport castor with an overall height of 190 mm

Wheel diameter x width: 160 x 40 mm

Top plate with 4 mounting holes of 11 mm, mounting hole distance 105x80 mm and top plate outer dimensions: 135x110 mm

Wheel with roller bearing and black rubber tyre with hardness 80 ° Shore A on steel rim with electrogalvanization zinc plating anti-corrosion protection Cr6-free.

Approved and tested load capacity

Dynamic 180 kg

Static 220 kg

Temperature range:

Continuous operation: -20 | +70°C

Short (10 min) exposure: -30 | +80°C

Advantages of this Comfortable drive Swivel transport castor:

- ✓ to manoeuvre
- ✓ performance on uneven floor or obstacles
- ✓ and strong wheel systems

LIV SYSTEMS standard Swivel transport castor + black rubber tyre Ø160 x W40mm for 180kg Prod ID: 64156

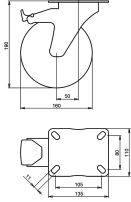
ID 64156: Castor overall height 190 mm | 4 mounting holes with distance 105x80 mm | Wheel with roller bearing and black rubber tyre with hardness 80 ° Shore A | Comfortable drive, easy to manoeuvre, good performance on uneven floor or obstacles, robust an

Product information

- Article code 2-640 ISO
- SKU 64156
- EAN 3838461641565

Specifications

The result of our quality is maximum performance!



Product description

standard Swivel transport castor with brake with an overall height of 190 mm

Wheel diameter x width: 160 x 40 mm

Top plate with 4 mounting holes of 11 mm, mounting hole distance 105x80 mm and top plate outer dimensions: 135x110 mm

Wheel with roller bearing and black rubber tyre with hardness 80 ° Shore A on steel rim with electrogalvanization zinc plating anti-corrosion protection Cr6-free the double brake system, brakes the turning of the wheel and the swivel rotation.

Approved and tested load capacity

Dynamic 180 kg

Static 220 kg

Temperature range:

Continuous operation: -20 | +70°C

Short (10 min) exposure: -30 | +80°C

Advantages of this Comfortable drive Swivel transport castor with brake:

- ✓ to manoeuvre
- ✓ performance on uneven floor or obstacles
- ✓ and strong wheel systems

LIV SYSTEMS standard Swivel transport castor with brake + black rubber tyre Ø160 x W40mm for 180kg Prod ID: 30324

ID 30324: Castor overall height 190 mm | 4 mounting holes with distance 105x80 mm | Wheel with roller bearing and black rubber tyre with hardness 80 ° Shore A | The double brake system, brakes the turning of the wheel and the swivel rotation. | Comfortabl

Product information

- Article code 2-656 A
- SKU 30324
- EAN 3838461303241

Specifications

The result of our quality is maximum performance!

[Close](#)

[Close](#)



Product description

standard Wheel with roller bearing and black rubber tyre with hardness 80 ° Shore A on polypropylene

Wheel diameter x width: 160 x 40 mm

Axle hole: 20 mm

Hub length: 58 mm

Approved and tested load capacity

Dynamic 180 kg

Static 220 kg

Temperature range:

Continuous operation: -20 | +70°C

Short (10 min) exposure: -30 | +80°C

Advantages of this Smooth drive wheel wheel:

- ✓ wet floor
- ✓ reduces the transmission of both vibration and noise
- ✓ with low obstacles

LIV SYSTEMS standard transport wheel + black rubber tyre Ø160 x W40mm for 180kg Prod ID: 30255

ID 30255: standard Wheel with roller bearing and black rubber tyre with hardness 80 ° Shore A on polypropylene | Axle hole: 20 mm | Hub length: 58 mm | Smooth drive wheel, for wet floor, rubber reduces the transmission of both vibration and noise, perfect

Product information

- Article code 2-947 A
- SKU 30255
- EAN 3838461302558



Product description

standard Wheel with plain bearing and black rubber tyre with hardness 80 ° Shore A on steel rim with electrogalvanization zinc plating anti-corrosion protection Cr6-free

Wheel diameter x width: 160 x 40 mm

Axle hole: 20 mm

Hub length: 58 mm

Approved and tested load capacity

Dynamic 180 kg

Static 220 kg

Temperature range:

Continuous operation: -20 | +70°C

Short (10 min) exposure: -30 | +80°C

Advantages of this Comfortable drive wheel:

- ✓ to manoeuvre
- ✓ performance on uneven floor or obstacles
- ✓ and strong wheel systems

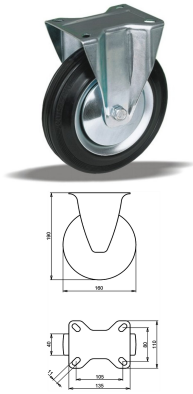
LIV SYSTEMS standard transport wheel + black rubber tyre Ø160 x W40mm for 180kg Prod ID: 64155

ID 64155: standard Wheel with plain bearing and black rubber tyre with hardness 80 ° Shore A on steel rim with electrogalvanization zinc plating anti-corrosion protection Cr6-free | Axle hole: 20 mm | Hub length: 58 mm |

Comfortable drive, easy to manoeuvre

Product information

- Article code 2-158 ISO
- SKU 64155
- EAN 3838461641558



Product description

standard fixed transport castor with an overall height of 190 mm

Wheel diameter x width: 160 x 40 mm

Top plate with 4 mounting holes of 11 mm, mounting hole distance 105x80 mm and top plate outer dimensions: 135x110 mm

Wheel with roller bearing and black rubber tyre with hardness 80 ° Shore A on steel rim with electrogalvanization zinc plating anti-corrosion protection Cr6-free.

Approved and tested load capacity

Dynamic 180 kg

Static 220 kg

Temperature range:

Continuous operation: -20 | +70°C

Short (10 min) exposure: -30 | +80°C

Advantages of this Comfortable drive fixed transport castor:

- ✓ to manoeuvre
- ✓ performance on uneven floor or obstacles
- ✓ and strong wheel systems

LIV SYSTEMS standard fixed transport castor + black rubber tyre Ø160 x W40mm for 180kg Prod ID: 64157

ID 64157: Castor overall height 190 mm | 4 mounting holes with distance 105x80 mm | Wheel with roller bearing and black rubber tyre with hardness 80 ° Shore A | Comfortable drive, easy to manoeuvre, good performance on uneven floor or obstacles, robust an

Product information

- Article code 2-641 ISO
- SKU 64157
- EAN 3838461641572

Specifications

The result of our quality is maximum performance!

[Close](#)

[Close](#)



Product description

standard Wheel with plain bearing and grey rubber tyre with hardness 83 ° Shore A on polypropylene

Wheel diameter x width: 160 x 40 mm

Axle hole: 20 mm

Hub length: 58 mm

Approved and tested load capacity

Dynamic 180 kg

Static 220 kg

Temperature range:

Continuous operation: -20 | +70°C

Short (10 min) exposure: -30 | +80°C

Advantages of this Elegant trip wheel:

- ✓ rubber is non-marking and leaves no marks on the floor
- ✓ reduces the transmission of both vibration and noise
- ✓ and outdoor use

LIV SYSTEMS standard wheel + grey rubber tyre Ø160 x W40mm for 180kg

Prod ID: 39373

ID 39373: standard Wheel with plain bearing and grey rubber tyre with hardness 83 ° Shore A on polypropylene | Axle hole: 20 mm | Hub length: 58 mm | Elegant trip, Grey rubber is non-marking and leaves no marks on the floor, rubber reduces the transmission

Product information

- Article code 2-947 ISO
- SKU 39373
- EAN 3838461393730



Product description

standard Wheel with roller bearing and grey rubber tyre with hardness 83 ° Shore A on polypropylene

Wheel diameter x width: 160 x 40 mm

Axle hole: 20 mm

Hub length: 58 mm

Approved and tested load capacity

Dynamic 180 kg

Static 220 kg

Temperature range:

Continuous operation: -20 | +70°C

Short (10 min) exposure: -30 | +80°C

Advantages of this Elegant trip wheel:

- ✓ rubber is non-marking and leaves no marks on the floor
- ✓ reduces the transmission of both vibration and noise
- ✓ and outdoor use

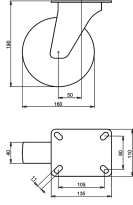
LIV SYSTEMS standard wheel + grey rubber tyre Ø160 x W40mm for 180kg

Prod ID: 38603

ID 38603: standard Wheel with roller bearing and grey rubber tyre with hardness 83 ° Shore A on polypropylene | Axle hole: 20 mm | Hub length: 58 mm | Elegant trip, Grey rubber is non-marking and leaves no marks on the floor, rubber reduces the transmissio

Product information

- Article code 2-947 A
- SKU 38603
- EAN 3838461386039



Product description

standard Swivel castor with an overall height of 190 mm

Wheel diameter x width: 160 x 40 mm

Top plate with 4 mounting holes of 11 mm, mounting hole distance 105x80 mm and top plate outer dimensions: 135x110 mm

Wheel with plain bearing and grey rubber tyre with hardness 83 ° Shore A on polypropylene.

Approved and tested load capacity

Dynamic 180 kg

Static 220 kg

Temperature range:

Continuous operation: -20 | +70°C

Short (10 min) exposure: -30 | +80°C

Advantages of this Elegant trip Swivel castor:

- ✓ rubber is non-marking and leaves no marks on the floor
- ✓ reduces the transmission of both vibration and noise
- ✓ and outdoor use

LIV SYSTEMS standard Swivel castor + grey rubber tyre Ø160 x W40mm for 180kg Prod ID: 39403

ID 39403: Castor overall height 190 mm | 4 mounting holes with distance 105x80 mm | Wheel with plain bearing and grey rubber tyre with hardness 83 ° Shore A | Elegant trip, Grey rubber is non-marking and leaves no marks on the floor, rubber reduces the tr

Product information

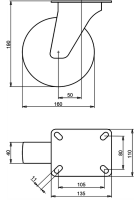
- Article code 2-925 ISO
- SKU 39403
- EAN 3838461394034

Specifications

The result of our quality is maximum performance!

[Close](#)

[Close](#)



Product description

standard Swivel castor with an overall height of 190 mm

Wheel diameter x width: 160 x 40 mm

Top plate with 4 mounting holes of 11 mm, mounting hole distance 105x80 mm and top plate outer dimensions: 135x110 mm

Wheel with roller bearing and grey rubber tyre with hardness 83 ° Shore A on polypropylene.

Approved and tested load capacity

Dynamic 180 kg

Static 220 kg

Temperature range:

Continuous operation: -20 | +70°C

Short (10 min) exposure: -30 | +80°C

Advantages of this Elegant trip Swivel castor:

- ✓ rubber is non-marking and leaves no marks on the floor
- ✓ reduces the transmission of both vibration and noise
- ✓ and outdoor use

LIV SYSTEMS standard Swivel castor + grey rubber tyre Ø160 x W40mm for 180kg Prod ID: 38683

ID 38683: Castor overall height 190 mm | 4 mounting holes with distance 105x80 mm | Wheel with roller bearing and grey rubber tyre with hardness 83 ° Shore A | Elegant trip, Grey rubber is non-marking and leaves no marks on the floor, rubber reduces the t

Product information

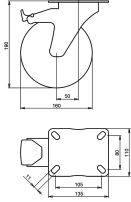
- Article code 2-918 ISO
- SKU 38683
- EAN 3838461386831

Specifications

The result of our quality is maximum performance!

[Close](#)

[Close](#)



Product description

standard Swivel castor with brake with an overall height of 190 mm

Wheel diameter x width: 160 x 40 mm

Top plate with 4 mounting holes of 11 mm, mounting hole distance 105x110 mm and top plate outer dimensions: 135x110 mm

Wheel with plain bearing and grey rubber tyre with hardness 83 ° Shore A on polypropylene

the double brake system, brakes the turning of the wheel and the swivel rotation.

Approved and tested load capacity

Dynamic 180 kg

Static 220 kg

Temperature range:

Continuous operation: -20 | +70°C

Short (10 min) exposure: -30 | +80°C

Advantages of this Elegant trip Swivel castor with brake:

- ✓ rubber is non-marking and leaves no marks on the floor
- ✓ reduces the transmission of both vibration and noise
- ✓ and outdoor use

LIV SYSTEMS standard Swivel castor with brake + grey rubber tyre Ø160 x W40mm for 180kg Prod ID: 39443

ID 39443: Castor overall height 190 mm | 4 mounting holes with distance 105x110 mm | Wheel with plain bearing and grey rubber tyre with hardness 83 ° Shore A | The double brake system, brakes the turning of the wheel and the swivel rotation. | Elegant tri

Product information

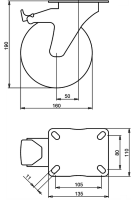
- Article code 2-939 ISO
- SKU 39443
- EAN 3838461394430

Specifications

The result of our quality is maximum performance!

[Close](#)

[Close](#)



Product description

standard Swivel castor with brake with an overall height of 190 mm

Wheel diameter x width: 160 x 40 mm

Top plate with 4 mounting holes of 11 mm, mounting hole distance 105x110 mm and top plate outer dimensions: 135x110 mm

Wheel with roller bearing and grey rubber tyre with hardness 83 ° Shore A on polypropylene

the double brake system, brakes the turning of the wheel and the swivel rotation.

Approved and tested load capacity

Dynamic 180 kg

Static 220 kg

Temperature range:

Continuous operation: -20 | +70°C

Short (10 min) exposure: -30 | +80°C

Advantages of this Elegant trip Swivel castor with brake:

- ✓ rubber is non-marking and leaves no marks on the floor
- ✓ reduces the transmission of both vibration and noise
- ✓ and outdoor use

LIV SYSTEMS standard Swivel castor with brake + grey rubber tyre Ø160 x W40mm for 180kg Prod ID: 39435

ID 39435: Castor overall height 190 mm | 4 mounting holes with distance 105x110 mm | Wheel with roller bearing and grey rubber tyre with hardness 83 ° Shore A | The double brake system, brakes the turning of the wheel and the swivel rotation. | Elegant tr

Product information

- Article code 2-932 ISO
- SKU 39435
- EAN 3838461394355

Specifications

The result of our quality is maximum performance!

[Close](#)

[Close](#)



Product description

standard Swivel castor with an overall height of 190 mm

Wheel diameter x width: 160 x 40 mm

Top plate with 4 mounting holes of #\$\$ mm, mounting hole distance #\$\$ mm and top plate outer dimensions: 93 mm

Wheel with plain bearing and grey rubber tyre with hardness 83 ° Shore A on polypropylene.

Approved and tested load capacity

Dynamic 180 kg

Static 220 kg

Temperature range:

Continuous operation: -20 | +70°C

Short (10 min) exposure: -30 | +80°C

Advantages of this Elegant trip Swivel castor:

- ✓ rubber is non-marking and leaves no marks on the floor
- ✓ reduces the transmission of both vibration and noise
- ✓ and outdoor use

LIV SYSTEMS standard Swivel castor + grey rubber tyre Ø160 x W40mm for 180kg Prod ID: 39484

ID 39484: Castor overall height 190 mm | 4 mounting holes with distance #\$\$ mm | Wheel with plain bearing and grey rubber tyre with hardness 83 ° Shore A | Elegant trip, Grey rubber is non-marking and leaves no marks on the floor, rubber reduces the trans

Product information

- Article code 2-976 ISO
- SKU 39484
- EAN 3838461394843



Product description

standard Swivel castor with an overall height of 190 mm

Wheel diameter x width: 160 x 40 mm

Top plate with 4 mounting holes of #\$\$ mm, mounting hole distance #\$\$ mm and top plate outer dimensions: 93 mm

Wheel with roller bearing and grey rubber tyre with hardness 83 ° Shore A on polypropylene.

Approved and tested load capacity

Dynamic 180 kg

Static 220 kg

Temperature range:

Continuous operation: -20 | +70°C

Short (10 min) exposure: -30 | +80°C

Advantages of this Elegant trip Swivel castor:

- ✓ rubber is non-marking and leaves no marks on the floor
- ✓ reduces the transmission of both vibration and noise
- ✓ and outdoor use

LIV SYSTEMS standard Swivel castor + grey rubber tyre Ø160 x W40mm for 180kg Prod ID: 39483

ID 39483: Castor overall height 190 mm | 4 mounting holes with distance #\$\$ mm | Wheel with roller bearing and grey rubber tyre with hardness 83 ° Shore A | Elegant trip, Grey rubber is non-marking and leaves no marks on the floor, rubber reduces the tran

Product information

- Article code 2-969 ISO
- SKU 39483
- EAN 3838461394836



Product description

standard Swivel castor with brake with an overall height of 190 mm

Wheel diameter x width: 160 x 40 mm

Top plate with 4 mounting holes of 40 mm, mounting hole distance 100 mm and top plate outer dimensions: 93 mm

Wheel with plain bearing and grey rubber tyre with hardness 83 ° Shore A on polypropylene the double brake system, brakes the turning of the wheel and the swivel rotation.

Approved and tested load capacity

Dynamic 180 kg

Static 220 kg

Temperature range:

Continuous operation: -20 | +70°C

Short (10 min) exposure: -30 | +80°C


Advantages of this Elegant trip Swivel castor with brake:

- ✓ rubber is non-marking and leaves no marks on the floor
- ✓ reduces the transmission of both vibration and noise
- ✓ and outdoor use

LIV SYSTEMS standard Swivel castor with brake + grey rubber tyre Ø160 x W40mm for 180kg Prod ID: 39533

ID 39533: Castor overall height 190 mm | 4 mounting holes with distance 100 mm | Wheel with plain bearing and grey rubber tyre with hardness 83 ° Shore A | The double brake system, brakes the turning of the wheel and the swivel rotation. | Elegant trip, G

Product information

- 
- Article code 2-990 ISO
 - SKU 39533
 - EAN 3838461395338



Product description

standard Swivel castor with brake with an overall height of 190 mm

Wheel diameter x width: 160 x 40 mm

Top plate with 4 mounting holes of 40 mm, mounting hole distance 100 mm and top plate outer dimensions: 93 mm

Wheel with roller bearing and grey rubber tyre with hardness 83 ° Shore A on polypropylene the double brake system, brakes the turning of the wheel and the swivel rotation.

Approved and tested load capacity

Dynamic 180 kg

Static 220 kg

Temperature range:

Continuous operation: -20 | +70°C

Short (10 min) exposure: -30 | +80°C


Advantages of this Elegant trip Swivel castor with brake:

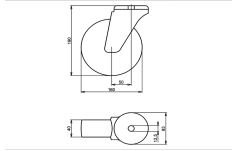
- ✓ rubber is non-marking and leaves no marks on the floor
- ✓ reduces the transmission of both vibration and noise
- ✓ and outdoor use

LIV SYSTEMS standard Swivel castor with brake + grey rubber tyre Ø160 x W40mm for 180kg Prod ID: 39525

ID 39525: Castor overall height 190 mm | 4 mounting holes with distance 100 mm | Wheel with roller bearing and grey rubber tyre with hardness 83 ° Shore A | The double brake system, brakes the turning of the wheel and the swivel rotation. | Elegant trip,

Product information

- 
- Article code 2-983 ISO
 - SKU 39525
 - EAN 3838461395253



Product description

standard Swivel castor with an overall height of 190 mm

Wheel diameter x width: 160 x 40 mm

Top plate with 4 mounting holes of 12,5 mm, mounting hole distance #\$\$ mm and top plate outer dimensions: 93 mm

Wheel with plain bearing and grey rubber tyre with hardness 83 ° Shore A on polypropylene.

Approved and tested load capacity

Dynamic 180 kg

Static 220 kg

Temperature range:

Continous operation: -20 | +70°C

Short (10 min) exposure: -30 | +80°C

Advantages of this Elegant trip Swivel castor:

- ✓ rubber is non-marking and leaves no marks on the floor
- ✓ reduces the transmission of both vibration and noise
- ✓ and outdoor use

LIV SYSTEMS standard Swivel castor + grey rubber tyre Ø160 x W40mm for 180kg Prod ID: 39565

ID 39565: Castor overall height 190 mm | 4 mounting holes with distance #\$\$ mm | Wheel with plain bearing and grey rubber tyre with hardness 83 ° Shore A | Elegant trip, Grey rubber is non-marking and leaves no marks on the floor, rubber reduces the trans

Product information

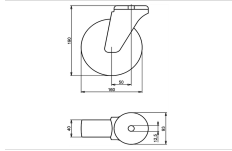
- Article code 2-976 L12
- SKU 39565
- EAN 3838461395659

Specifications

The result of our quality is maximum performance!

[Close](#)

[Close](#)



Product description

standard Swivel castor with an overall height of 190 mm

Wheel diameter x width: 160 x 40 mm

Top plate with 4 mounting holes of 12,5 mm, mounting hole distance #\$\$ mm and top plate outer dimensions: 93 mm

Wheel with roller bearing and grey rubber tyre with hardness 83 ° Shore A on polypropylene.

Approved and tested load capacity

Dynamic 180 kg

Static 220 kg

Temperature range:

Continious operation: -20 | +70°C

Short (10 min) exposure: -30 | +80°C

Advantages of this Elegant trip Swivel castor:

- ✓ rubber is non-marking and leaves no marks on the floor
- ✓ reduces the transmission of both vibration and noise
- ✓ and outdoor use

LIV SYSTEMS standard Swivel castor + grey rubber tyre Ø160 x W40mm for 180kg Prod ID: 38583

ID 38583: Castor overall height 190 mm | 4 mounting holes with distance #\$\$ mm | Wheel with roller bearing and grey rubber tyre with hardness 83 ° Shore A | Elegant trip, Grey rubber is non-marking and leaves no marks on the floor, rubber reduces the tran

Product information

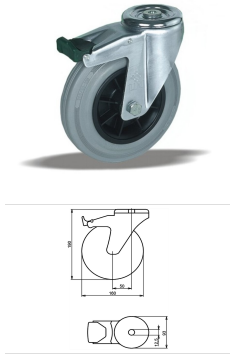
- Article code 2-969 L12
- SKU 38583
- EAN 3838461385834

Specifications

The result of our quality is maximum performance!

[Close](#)

[Close](#)



Product description

standard Swivel castor with brake with an overall height of 190 mm
 Wheel diameter x width: 160 x 40 mm
 Top plate with 4 mounting holes of 12,5 mm, mounting hole distance #\$\$ mm and top plate outer dimensions: 93 mm
 Wheel with plain bearing and grey rubber tyre with hardness 83 ° Shore A on polypropylene
 the double brake system, brakes the turning of the wheel and the swivel rotation.

Approved and tested load capacity

Dynamic 180 kg
 Static 220 kg

Temperature range:

Continuous operation: -20 | +70°C
 Short (10 min) exposure: -30 | +80°C

Advantages of this Elegant trip Swivel castor with brake:

- ✓ rubber is non-marking and leaves no marks on the floor
- ✓ reduces the transmission of both vibration and noise
- ✓ and outdoor use

LIV SYSTEMS standard Swivel castor with brake + grey rubber tyre Ø160 x W40mm for 180kg Prod ID: 39614

ID 39614: Castor overall height 190 mm | 4 mounting holes with distance #\$\$ mm | Wheel with plain bearing and grey rubber tyre with hardness 83 ° Shore A | The double brake system, brakes the turning of the wheel and the swivel rotation. | Elegant trip, G

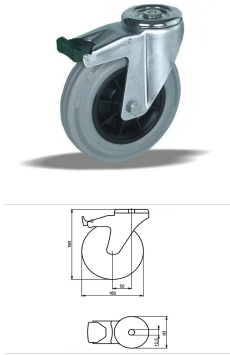
Product information

- Article code 2-990 L12
- SKU 39614
- EAN 3838461396144

Specifications

The result of our quality is maximum performance!

[Close](#)
[Close](#)



Product description

standard Swivel castor with brake with an overall height of 190 mm
 Wheel diameter x width: 160 x 40 mm
 Top plate with 4 mounting holes of 12,5 mm, mounting hole distance #\$\$ mm and top plate outer dimensions: 93 mm
 Wheel with roller bearing and grey rubber tyre with hardness 83 ° Shore A on polypropylene
 the double brake system, brakes the turning of the wheel and the swivel rotation.

Approved and tested load capacity

Dynamic 180 kg
 Static 220 kg

Temperature range:

Continious operation: -20 | +70°C
 Short (10 min) exposure: -30 | +80°C

Advantages of this Elegant trip Swivel castor with brake:

- ✓ rubber is non-marking and leaves no marks on the floor
- ✓ reduces the transmission of both vibration and noise
- ✓ and outdoor use

LIV SYSTEMS standard Swivel castor with brake + grey rubber tyre Ø160 x W40mm for 180kg Prod ID: 39613

ID 39613: Castor overall height 190 mm | 4 mounting holes with distance #\$\$ mm | Wheel with roller bearing and grey rubber tyre with hardness 83 ° Shore A | The double brake system, brakes the turning of the wheel and the swivel rotation. | Elegant trip,

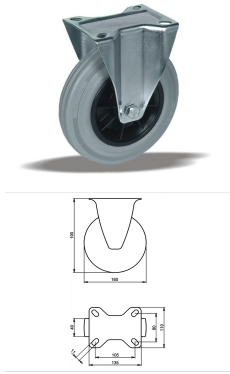
Product information

- Article code 2-983 L12
- SKU 39613
- EAN 3838461396137

Specifications

The result of our quality is maximum performance!

[Close](#)
[Close](#)



Product description

standard Fixed castor with an overall height of 190 mm

Wheel diameter x width: 160 x 40 mm

Top plate with 4 mounting holes of 11 mm, mounting hole distance 105x80 mm and top plate outer dimensions: 135x110 mm

Wheel with plain bearing and grey rubber tyre with hardness 83 ° Shore A on polypropylene.

Approved and tested load capacity

Dynamic 180 kg

Static 220 kg

Temperature range:

Continuous operation: -20 | +70°C

Short (10 min) exposure: -30 | +80°C

Advantages of this Elegant trip Fixed castor:

- ✓ rubber is non-marking and leaves no marks on the floor
- ✓ reduces the transmission of both vibration and noise
- ✓ and outdoor use

LIV SYSTEMS standard Fixed castor + grey rubber tyre Ø160 x W40mm for 180kg Prod ID: 39653

ID 39653: Castor overall height 190 mm | 4 mounting holes with distance 105x80 mm | Wheel with plain bearing and grey rubber tyre with hardness 83 ° Shore A | Elegant trip, Grey rubber is non-marking and leaves no marks on the floor, rubber reduces the tr

Product information

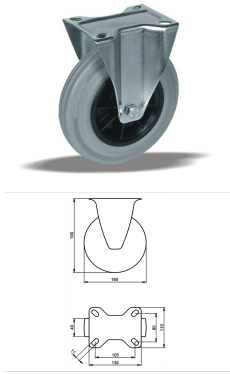
- Article code 2-962 ISO
- SKU 39653
- EAN 3838461396533

Specifications

The result of our quality is maximum performance!

[Close](#)

[Close](#)



Product description

standard Fixed castor with an overall height of 190 mm

Wheel diameter x width: 160 x 40 mm

Top plate with 4 mounting holes of 11 mm, mounting hole distance 105x80 mm and top plate outer dimensions: 135x110 mm

Wheel with roller bearing and grey rubber tyre with hardness 83 ° Shore A on polypropylene.

Approved and tested load capacity

Dynamic 180 kg

Static 220 kg

Temperature range:

Continuous operation: -20 | +70°C

Short (10 min) exposure: -30 | +80°C

Advantages of this Elegant trip Fixed castor:

- ✓ rubber is non-marking and leaves no marks on the floor
- ✓ reduces the transmission of both vibration and noise
- ✓ and outdoor use

LIV SYSTEMS standard Fixed castor + grey rubber tyre Ø160 x W40mm for 180kg Prod ID: 38584

ID 38584: Castor overall height 190 mm | 4 mounting holes with distance 105x80 mm | Wheel with roller bearing and grey rubber tyre with hardness 83 ° Shore A | Elegant trip, Grey rubber is non-marking and leaves no marks on the floor, rubber reduces the t

Product information

- Article code 2-955 ISO
- SKU 38584
- EAN 3838461385841

Specifications

The result of our quality is maximum performance!

[Close](#)

[Close](#)



Product description

standard Wheel with plain bearing and black rubber tyre with hardness 80 ° Shore A on polypropylene

Wheel diameter x width: 160 x 40 mm

Axle hole: 20 mm

Hub length: 58 mm

Approved and tested load capacity

Dynamic 180 kg

Static 220 kg

Temperature range:

Continous operation: -20 | +70°C

Short (10 min) exposure: -30 | +80°C

Advantages of this Smooth drive wheel wheel:

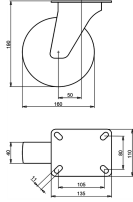
- ✓ wet floor
- ✓ reduces the transmission of both vibration and noise
- ✓ with low obstacles

LIV SYSTEMS standard transport wheel + black rubber tyre Ø160 x W40mm for 180kg Prod ID: 91052

ID 91052: standard Wheel with plain bearing and black rubber tyre with hardness 80 ° Shore A on polypropylene | Axle hole: 20 mm | Hub length: 58 mm | Smooth drive wheel, for wet floor, rubber reduces the transmission of both vibration and noise, perfect w

Product information

- Article code 2-947 ISO
- SKU 91052
- EAN 3838461910524



Product description

standard Swivel transport castor with an overall height of 190 mm

Wheel diameter x width: 160 x 40 mm

Top plate with 4 mounting holes of 11 mm, mounting hole distance 105x80 mm and top plate outer dimensions: 135x110 mm

Wheel with plain bearing and black rubber tyre with hardness 80 ° Shore A on polypropylene.

Approved and tested load capacity

Dynamic 180 kg

Static 220 kg

Temperature range:

Continuous operation: -20 | +70°C

Short (10 min) exposure: -30 | +80°C

Advantages of this Smooth drive wheel Swivel transport castor:

- ✓ wet floor
- ✓ reduces the transmission of both vibration and noise
- ✓ with low obstacles

LIV SYSTEMS standard Swivel transport castor + black rubber tyre Ø160 x W40mm for 180kg Prod ID: 91836

ID 91836: Castor overall height 190 mm | 4 mounting holes with distance 105x80 mm | Wheel with plain bearing and black rubber tyre with hardness 80 ° Shore A | Smooth drive wheel, for wet floor, rubber reduces the transmission of both vibration and noise,

Product information

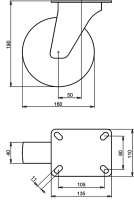
- Article code 2-925 ISO
- SKU 91836
- EAN 3838461918360

Specifications

The result of our quality is maximum performance!

[Close](#)

[Close](#)



Product description

standard Swivel transport castor with an overall height of 190 mm

Wheel diameter x width: 160 x 40 mm

Top plate with 4 mounting holes of 11 mm, mounting hole distance 105x80 mm and top plate outer dimensions: 135x110 mm

Wheel with roller bearing and black rubber tyre with hardness 80 ° Shore A on polypropylene.

Approved and tested load capacity

Dynamic 180 kg

Static 220 kg

Temperature range:

Continuous operation: -20 | +70°C

Short (10 min) exposure: -30 | +80°C

Advantages of this Smooth drive wheel Swivel transport castor:

- ✓ wet floor
- ✓ reduces the transmission of both vibration and noise
- ✓ with low obstacles

LIV SYSTEMS standard Swivel transport castor + black rubber tyre Ø160 x W40mm for 180kg Prod ID: 31135

ID 31135: Castor overall height 190 mm | 4 mounting holes with distance 105x80 mm | Wheel with roller bearing and black rubber tyre with hardness 80 ° Shore A | Smooth drive wheel, for wet floor, rubber reduces the transmission of both vibration and noise

Product information

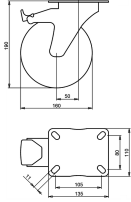
- Article code 2-918 ISO
- SKU 31135
- EAN 3838461311352

Specifications

The result of our quality is maximum performance!

[Close](#)

[Close](#)



Product description

standard Swivel transport castor with brake with an overall height of 190 mm

Wheel diameter x width: 160 x 40 mm

Top plate with 4 mounting holes of 11 mm, mounting hole distance 105x80 mm and top plate outer dimensions: 135x110 mm

Wheel with plain bearing and black rubber tyre with hardness 80 ° Shore A on polypropylene

the double brake system, brakes the turning of the wheel and the swivel rotation.

Approved and tested load capacity

Dynamic 180 kg

Static 220 kg

Temperature range:

Continuous operation: -20 | +70°C

Short (10 min) exposure: -30 | +80°C

Advantages of this Smooth drive wheel Swivel transport castor with brake:

- ✓ wet floor
- ✓ reduces the transmission of both vibration and noise
- ✓ with low obstacles

LIV SYSTEMS standard Swivel transport castor with brake + black rubber tyre Ø160 x W40mm for 180kg Prod ID: 31223

ID 31223: Castor overall height 190 mm | 4 mounting holes with distance 105x80 mm | Wheel with plain bearing and black rubber tyre with hardness 80 ° Shore A | The double brake system, brakes the turning of the wheel and the swivel rotation. | Smooth driv

Product information

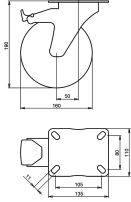
- Article code 2-969 ISO
- SKU 31223
- EAN 3838461312236

Specifications

The result of our quality is maximum performance!

[Close](#)

[Close](#)



Product description

standard Swivel transport castor with brake with an overall height of 190 mm

Wheel diameter x width: 160 x 40 mm

Top plate with 4 mounting holes of 11 mm, mounting hole distance 105x80 mm and top plate outer dimensions: 135x110 mm

Wheel with roller bearing and black rubber tyre with hardness 80 ° Shore A on polypropylene

the double brake system, brakes the turning of the wheel and the swivel rotation.

Approved and tested load capacity

Dynamic 180 kg

Static 220 kg

Temperature range:

Continuous operation: -20 | +70°C

Short (10 min) exposure: -30 | +80°C

Advantages of this Smooth drive wheel Swivel transport castor with brake:

- ✓ wet floor
- ✓ reduces the transmission of both vibration and noise
- ✓ with low obstacles

LIV SYSTEMS standard Swivel transport castor with brake + black rubber tyre Ø160 x W40mm for 180kg Prod ID: 31215

ID 31215: Castor overall height 190 mm | 4 mounting holes with distance 105x80 mm | Wheel with roller bearing and black rubber tyre with hardness 80 ° Shore A | The double brake system, brakes the turning of the wheel and the swivel rotation. | Smooth dri

Product information

- Article code 2-932 ISO
- SKU 31215
- EAN 3838461312151

Specifications

The result of our quality is maximum performance!

[Close](#)

[Close](#)



Product description

standard Swivel transport castor with an overall height of 190 mm

Wheel diameter x width: 160 x 40 mm

Top plate with 4 mounting holes of #\$\$ mm, mounting hole distance #\$\$ mm and top plate outer dimensions: 93 mm

Wheel with plain bearing and black rubber tyre with hardness 80 ° Shore A on polypropylene.

Approved and tested load capacity

Dynamic 180 kg

Static 220 kg

Temperature range:

Continuous operation: -20 | +70°C

Short (10 min) exposure: -30 | +80°C

Advantages of this Smooth drive wheel Swivel transport castor:

- ✓ wet floor
- ✓ reduces the transmission of both vibration and noise
- ✓ with low obstacles

LIV SYSTEMS standard Swivel transport castor + black rubber tyre Ø160 x W40mm for 180kg Prod ID: 31305

ID 31305: Castor overall height 190 mm | 4 mounting holes with distance #\$\$ mm | Wheel with plain bearing and black rubber tyre with hardness 80 ° Shore A | Smooth drive wheel, for wet floor, rubber reduces the transmission of both vibration and noise, pe

Product information

- Article code 2-976 ISO
- SKU 31305
- EAN 3838461313059



Product description

standard Swivel transport castor with an overall height of 190 mm

Wheel diameter x width: 160 x 40 mm

Top plate with 4 mounting holes of #\$\$ mm, mounting hole distance #\$\$ mm and top plate outer dimensions: 93 mm

Wheel with roller bearing and black rubber tyre with hardness 80 ° Shore A on polypropylene.

Approved and tested load capacity

Dynamic 180 kg

Static 220 kg

Temperature range:

Continuous operation: -20 | +70°C

Short (10 min) exposure: -30 | +80°C

Advantages of this Smooth drive wheel Swivel transport castor:

- ✓ wet floor
- ✓ reduces the transmission of both vibration and noise
- ✓ with low obstacles

LIV SYSTEMS standard Swivel transport castor + black rubber tyre Ø160 x W40mm for 180kg Prod ID: 31295

ID 31295: Castor overall height 190 mm | 4 mounting holes with distance #\$\$ mm | Wheel with roller bearing and black rubber tyre with hardness 80 ° Shore A | Smooth drive wheel, for wet floor, rubber reduces the transmission of both vibration and noise, p

Product information

- Article code 2-969 ISO
- SKU 31295
- EAN 3838461312953



Product description

standard Swivel transport castor with brake with an overall height of 190 mm

Wheel diameter x width: 160 x 40 mm

Top plate with 4 mounting holes of #\$\$ mm, mounting hole distance #\$\$ mm and top plate outer dimensions: 93 mm

Wheel with plain bearing and black rubber tyre with hardness 80 ° Shore A on polypropylene the double brake system, brakes the turning of the wheel and the swivel rotation.

Approved and tested load capacity

Dynamic 180 kg

Static 220 kg

Temperature range:

Continuous operation: -20 | +70°C

Short (10 min) exposure: -30 | +80°C

Advantages of this Smooth drive wheel Swivel transport castor with brake:

- ✓ wet floor
- ✓ reduces the transmission of both vibration and noise
- ✓ with low obstacles

LIV SYSTEMS standard Swivel transport castor with brake + black rubber tyre Ø160 x W40mm for 180kg Prod ID: 31413

ID 31413: Castor overall height 190 mm | 4 mounting holes with distance #\$\$ mm | Wheel with plain bearing and black rubber tyre with hardness 80 ° Shore A | The double brake system, brakes the turning of the wheel and the swivel rotation. | Smooth drive w

Product information

- 
- Article code 2-990 ISO
 - SKU 31413
 - EAN 3838461314131



Product description

standard Swivel transport castor with brake with an overall height of 190 mm

Wheel diameter x width: 160 x 40 mm

Top plate with 4 mounting holes of #\$\$ mm, mounting hole distance #\$\$ mm and top plate outer dimensions: 93 mm

Wheel with roller bearing and black rubber tyre with hardness 80 ° Shore A on polypropylene the double brake system, brakes the turning of the wheel and the swivel rotation.

Approved and tested load capacity

Dynamic 180 kg

Static 220 kg

Temperature range:

Continuous operation: -20 | +70°C

Short (10 min) exposure: -30 | +80°C


Advantages of this Smooth drive wheel Swivel transport castor with brake:

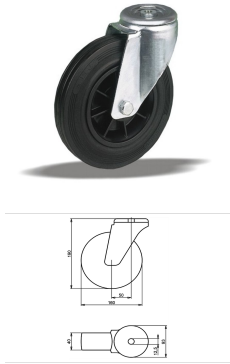
- ✓ wet floor
- ✓ reduces the transmission of both vibration and noise
- ✓ with low obstacles

LIV SYSTEMS standard Swivel transport castor with brake + black rubber tyre Ø160 x W40mm for 180kg Prod ID: 31404

ID 31404: Castor overall height 190 mm | 4 mounting holes with distance #\$\$ mm | Wheel with roller bearing and black rubber tyre with hardness 80 ° Shore A | The double brake system, brakes the turning of the wheel and the swivel rotation. | Smooth drive

Product information

- 
- Article code 2-983 ISO
 - SKU 31404
 - EAN 3838461314049



Product description

standard Swivel transport castor with an overall height of 190 mm

Wheel diameter x width: 160 x 40 mm

Top plate with 4 mounting holes of 12,5 mm, mounting hole distance #\$\$ mm and top plate outer dimensions: 93 mm

Wheel with plain bearing and black rubber tyre with hardness 80 ° Shore A on polypropylene.

Approved and tested load capacity

Dynamic 180 kg

Static 220 kg

Temperature range:

Continous operation: -20 | +70°C

Short (10 min) exposure: -30 | +80°C

Advantages of this Smooth drive wheel Swivel transport castor:

- ✓ wet floor
- ✓ reduces the transmission of both vibration and noise
- ✓ with low obstacles

LIV SYSTEMS standard Swivel transport castor + black rubber tyre Ø160 x W40mm for 180kg Prod ID: 34163

ID 34163: Castor overall height 190 mm | 4 mounting holes with distance #\$\$ mm | Wheel with plain bearing and black rubber tyre with hardness 80 ° Shore A | Smooth drive wheel, for wet floor, rubber reduces the transmission of both vibration and noise, pe

Product information

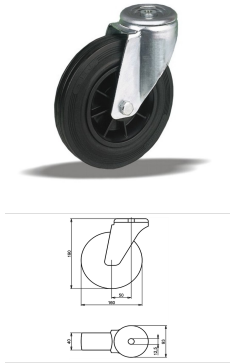
- Article code 2-976 L12
- SKU 34163
- EAN 3838461341632

Specifications

The result of our quality is maximum performance!

[Close](#)

[Close](#)



Product description

standard Swivel transport castor with an overall height of 190 mm

Wheel diameter x width: 160 x 40 mm

Top plate with 4 mounting holes of 12,5 mm, mounting hole distance #\$\$ mm and top plate outer dimensions: 93 mm

Wheel with roller bearing and black rubber tyre with hardness 80 ° Shore A on polypropylene.

Approved and tested load capacity

Dynamic 180 kg

Static 220 kg

Temperature range:

Continious operation: -20 | +70°C

Short (10 min) exposure: -30 | +80°C

Advantages of this Smooth drive wheel Swivel transport castor:

- ✓ wet floor
- ✓ reduces the transmission of both vibration and noise
- ✓ with low obstacles

LIV SYSTEMS standard Swivel transport castor + black rubber tyre Ø160 x W40mm for 180kg Prod ID: 34155

ID 34155: Castor overall height 190 mm | 4 mounting holes with distance #\$\$ mm | Wheel with roller bearing and black rubber tyre with hardness 80 ° Shore A | Smooth drive wheel, for wet floor, rubber reduces the transmission of both vibration and noise, p

Product information

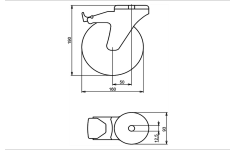
- Article code 2-969 L12
- SKU 34155
- EAN 3838461341557

Specifications

The result of our quality is maximum performance!

[Close](#)

[Close](#)



Product description

standard Swivel transport castor with brake with an overall height of 190 mm

Wheel diameter x width: 160 x 40 mm

Top plate with 4 mounting holes of 12,5 mm, mounting hole distance #\$\$ mm and top plate outer dimensions: 93 mm

Wheel with plain bearing and black rubber tyre with hardness 80 ° Shore A on polypropylene

the double brake system, brakes the turning of the wheel and the swivel rotation.

Approved and tested load capacity

Dynamic 180 kg

Static 220 kg

Temperature range:

Continious operation: -20 | +70°C

Short (10 min) exposure: -30 | +80°C

Advantages of this Smooth drive wheel Swivel transport castor with brake:

- ✓ wet floor
- ✓ reduces the transmission of both vibration and noise
- ✓ with low obstacles

LIV SYSTEMS standard Swivel transport castor with brake + black rubber tyre Ø160 x W40mm for 180kg Prod ID: 34233

ID 34233: Castor overall height 190 mm | 4 mounting holes with distance #\$\$ mm | Wheel with plain bearing and black rubber tyre with hardness 80 ° Shore A | The double brake system, brakes the turning of the wheel and the swivel rotation. | Smooth drive w

Product information

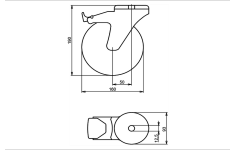
- Article code 2-990 L12
- SKU 34233
- EAN 3838461342332

Specifications

The result of our quality is maximum performance!

[Close](#)

[Close](#)



Product description

standard Swivel transport castor with brake with an overall height of 190 mm
 Wheel diameter x width: 160 x 40 mm
 Top plate with 4 mounting holes of 12,5 mm, mounting hole distance #\$\$ mm and top plate outer dimensions: 93 mm
 Wheel with roller bearing and black rubber tyre with hardness 80 ° Shore A on polypropylene
 the double brake system, brakes the turning of the wheel and the swivel rotation.

Approved and tested load capacity

Dynamic 180 kg
 Static 220 kg

Temperature range:

Continious operation: -20 | +70°C
 Short (10 min) exposure: -30 | +80°C

Advantages of this Smooth drive wheel Swivel transport castor with brake:

- ✓ wet floor
- ✓ reduces the transmission of both vibration and noise
- ✓ with low obstacles

LIV SYSTEMS standard Swivel transport castor with brake + black rubber tyre Ø160 x W40mm for 180kg Prod ID: 34225

ID 34225: Castor overall height 190 mm | 4 mounting holes with distance #\$\$ mm | Wheel with roller bearing and black rubber tyre with hardness 80 ° Shore A | The double brake system, brakes the turning of the wheel and the swivel rotation. | Smooth drive

Product information

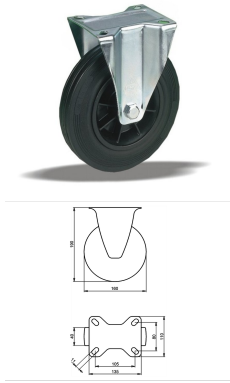
- Article code 2-983 L12
- SKU 34225
- EAN 3838461342257

Specifications

The result of our quality is maximum performance!

[Close](#)

[Close](#)



Product description

standard fixed transport castor with an overall height of 190 mm

Wheel diameter x width: 160 x 40 mm

Top plate with 4 mounting holes of 11 mm, mounting hole distance 105x80 mm and top plate outer dimensions: 135x110 mm

Wheel with plain bearing and black rubber tyre with hardness 80 ° Shore A on polypropylene.

Approved and tested load capacity

Dynamic 180 kg

Static 220 kg

Temperature range:

Continuous operation: -20 | +70°C

Short (10 min) exposure: -30 | +80°C

Advantages of this Smooth drive wheel fixed transport castor:

- ✓ wet floor
- ✓ reduces the transmission of both vibration and noise
- ✓ with low obstacles

LIV SYSTEMS standard fixed transport castor + black rubber tyre Ø160 x W40mm for 180kg Prod ID: 91787

ID 91787: Castor overall height 190 mm | 4 mounting holes with distance 105x80 mm | Wheel with plain bearing and black rubber tyre with hardness 80 ° Shore A | Smooth drive wheel, for wet floor, rubber reduces the transmission of both vibration and noise,

Product information

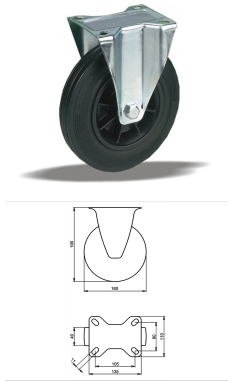
- Article code 2-962 ISO
- SKU 91787
- EAN 3838461917875

Specifications

The result of our quality is maximum performance!

[Close](#)

[Close](#)



Product description

standard fixed transport castor with an overall height of 190 mm

Wheel diameter x width: 160 x 40 mm

Top plate with 4 mounting holes of 11 mm, mounting hole distance 105x80 mm and top plate outer dimensions: 135x110 mm

Wheel with roller bearing and black rubber tyre with hardness 80 ° Shore A on polypropylene.

Approved and tested load capacity

Dynamic 180 kg

Static 220 kg

Temperature range:

Continuous operation: -20 | +70°C

Short (10 min) exposure: -30 | +80°C

Advantages of this Smooth drive wheel fixed transport castor:

- ✓ wet floor
- ✓ reduces the transmission of both vibration and noise
- ✓ with low obstacles

LIV SYSTEMS standard fixed transport castor + black rubber tyre Ø160 x W40mm for 180kg Prod ID: 31495

ID 31495: Castor overall height 190 mm | 4 mounting holes with distance 105x80 mm | Wheel with roller bearing and black rubber tyre with hardness 80 ° Shore A | Smooth drive wheel, for wet floor, rubber reduces the transmission of both vibration and noise

Product information

- Article code 2-955 ISO
- SKU 31495
- EAN 3838461314957

Specifications

The result of our quality is maximum performance!

[Close](#)

[Close](#)



Product description

standard Wheel with roller bearing and black rubber tyre with hardness 80 ° Shore A on steel rim with electrogalvanization zinc plating anti-corrosion protection Cr6-free

Wheel diameter x width: 160 x 40 mm

Axle hole: 20 mm

Hub length: 58 mm

Approved and tested load capacity

Dynamic 180 kg

Static 220 kg

Temperature range:

Continuous operation: -20 | +70°C

Short (10 min) exposure: -30 | +80°C

Advantages of this Comfortable drive wheel:

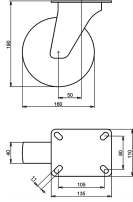
- ✓ to manoeuvre
- ✓ performance on uneven floor or obstacles
- ✓ and strong wheel systems

LIV SYSTEMS standard transport wheel + black rubber tyre Ø160 x W40mm for 180kg Prod ID: 64154

ID 64154: standard Wheel with roller bearing and black rubber tyre with hardness 80 ° Shore A on steel rim with electrogalvanization zinc plating anti-corrosion protection Cr6-free | Axle hole: 20 mm | Hub length: 58 mm | Comfortable drive, easy to manoeuvre

Product information

- Article code 2-566 ISO
- SKU 64154
- EAN 3838461641541



Product description

standard Swivel transport castor with an overall height of 190 mm

Wheel diameter x width: 160 x 40 mm

Top plate with 4 mounting holes of 11 mm, mounting hole distance 105x80 mm and top plate outer dimensions: 135x110 mm

Wheel with plain bearing and black rubber tyre with hardness 80 ° Shore A on steel rim with electrogalvanization zinc plating anti-corrosion protection Cr6-free.

Approved and tested load capacity

Dynamic 180 kg

Static 220 kg

Temperature range:

Continuous operation: -20 | +70°C

Short (10 min) exposure: -30 | +80°C

Advantages of this Comfortable drive Swivel transport castor:

- ✓ to manoeuvre
- ✓ performance on uneven floor or obstacles
- ✓ and strong wheel systems

LIV SYSTEMS standard Swivel transport castor + black rubber tyre Ø160 x W40mm for 180kg Prod ID: 64391

ID 64391: Castor overall height 190 mm | 4 mounting holes with distance 105x80 mm | Wheel with plain bearing and black rubber tyre with hardness 80 ° Shore A | Comfortable drive, easy to manoeuvre, good performance on uneven floor or obstacles, robust and

Product information

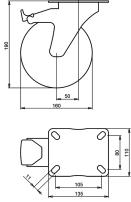
- Article code 2-159 ISO
- SKU 64391
- EAN 3838461643910

Specifications

The result of our quality is maximum performance!

[Close](#)

[Close](#)



Product description

standard Swivel transport castor with brake with an overall height of 190 mm

Wheel diameter x width: 160 x 40 mm

Top plate with 4 mounting holes of 11 mm, mounting hole distance 105x80 mm and top plate outer dimensions: 135x110 mm

Wheel with plain bearing and black rubber tyre with hardness 80 ° Shore A on steel rim with electrogalvanization zinc plating anti-corrosion protection Cr6-free the double brake system, brakes the turning of the wheel and the swivel rotation.

Approved and tested load capacity

Dynamic 180 kg

Static 220 kg

Temperature range:

Continuous operation: -20 | +70°C

Short (10 min) exposure: -30 | +80°C

Advantages of this Comfortable drive Swivel transport castor with brake:

- ✓ to manoeuvre
- ✓ performance on uneven floor or obstacles
- ✓ and strong wheel systems

LIV SYSTEMS standard Swivel transport castor with brake + black rubber tyre Ø160 x W40mm for 180kg Prod ID: 30325

ID 30325: Castor overall height 190 mm | 4 mounting holes with distance 105x80 mm | Wheel with plain bearing and black rubber tyre with hardness 80 ° Shore A | The double brake system, brakes the turning of the wheel and the swivel rotation. | Comfortable

Product information

- Article code 2-680 A
- SKU 30325
- EAN 3838461303258

Specifications

The result of our quality is maximum performance!

[Close](#)

[Close](#)



Product description

standard Swivel transport castor with an overall height of 190 mm

Wheel diameter x width: 160 x 40 mm

Top plate with 4 mounting holes of 4 mm, mounting hole distance 40 mm and top plate outer dimensions: 93 mm

Wheel with plain bearing and black rubber tyre with hardness 80 ° Shore A on steel rim with electrogalvanization zinc plating anti-corrosion protection Cr6-free.

Approved and tested load capacity

Dynamic 180 kg

Static 220 kg

Temperature range:

Continuous operation: -20 | +70°C

Short (10 min) exposure: -30 | +80°C


Advantages of this Comfortable drive Swivel transport castor:

- ✓ to manoeuvre
- ✓ performance on uneven floor or obstacles
- ✓ and strong wheel systems

LIV SYSTEMS standard Swivel transport castor + black rubber tyre Ø160 x W40mm for 180kg Prod ID: 64393

ID 64393: Castor overall height 190 mm | 4 mounting holes with distance 40 mm | Wheel with plain bearing and black rubber tyre with hardness 80 ° Shore A | Comfortable drive, easy to manoeuvre, good performance on uneven floor or obstacles, robust and st

Product information

- 
- Article code 2-219
 - SKU 64393
 - EAN 3838461643934



Product description

standard Swivel transport castor with an overall height of 190 mm

Wheel diameter x width: 160 x 40 mm

Top plate with 4 mounting holes of #\$\$ mm, mounting hole distance #\$\$ mm and top plate outer dimensions: 93 mm

Wheel with roller bearing and black rubber tyre with hardness 80 ° Shore A on steel rim with electrogalvanization zinc plating anti-corrosion protection Cr6-free.

Approved and tested load capacity

Dynamic 180 kg

Static 220 kg

Temperature range:

Continuous operation: -20 | +70°C

Short (10 min) exposure: -30 | +80°C


Advantages of this Comfortable drive Swivel transport castor:

- ✓ to manoeuvre
- ✓ performance on uneven floor or obstacles
- ✓ and strong wheel systems

LIV SYSTEMS standard Swivel transport castor + black rubber tyre Ø160 x W40mm for 180kg Prod ID: 64389

ID 64389: Castor overall height 190 mm | 4 mounting holes with distance #\$\$ mm | Wheel with roller bearing and black rubber tyre with hardness 80 ° Shore A | Comfortable drive, easy to manoeuvre, good performance on uneven floor or obstacles, robust and s

Product information

- 
- Article code 2-657
 - SKU 64389
 - EAN 3838461643897



Product description

standard Swivel transport castor with brake with an overall height of 190 mm

Wheel diameter x width: 160 x 40 mm

Top plate with 4 mounting holes of #5 mm, mounting hole distance #50 mm and top plate outer dimensions: 93 mm

Wheel with plain bearing and black rubber tyre with hardness 80 ° Shore A on steel rim with electrogalvanization zinc plating anti-corrosion protection Cr6-free

the double brake system, brakes the turning of the wheel and the swivel rotation.

Approved and tested load capacity

Dynamic 180 kg

Static 220 kg

Temperature range:

Continuous operation: -20 | +70°C

Short (10 min) exposure: -30 | +80°C

Advantages of this Comfortable drive Swivel transport castor with brake:

- ✓ to manoeuvre
- ✓ performance on uneven floor or obstacles
- ✓ and strong wheel systems

LIV SYSTEMS standard Swivel transport castor with brake + black rubber tyre Ø160 x W40mm for 180kg Prod ID: 30413

ID 30413: Castor overall height 190 mm | 4 mounting holes with distance #50 mm | Wheel with plain bearing and black rubber tyre with hardness 80 ° Shore A | The double brake system, brakes the turning of the wheel and the swivel rotation. | Comfortable dr

Product information



- Article code 2-681 A
- SKU 30413
- EAN 3838461304132



Product description

standard Swivel transport castor with brake with an overall height of 190 mm

Wheel diameter x width: 160 x 40 mm

Top plate with 4 mounting holes of #\$\$ mm, mounting hole distance #\$\$ mm and top plate outer dimensions: 93 mm

Wheel with roller bearing and black rubber tyre with hardness 80 ° Shore A on steel rim with electrogalvanization zinc plating anti-corrosion protection Cr6-free

the double brake system, brakes the turning of the wheel and the swivel rotation.

Approved and tested load capacity

Dynamic 180 kg

Static 220 kg

Temperature range:

Continuous operation: -20 | +70°C

Short (10 min) exposure: -30 | +80°C

Advantages of this Comfortable drive Swivel transport castor with brake:

- ✓ to manoeuvre
- ✓ performance on uneven floor or obstacles
- ✓ and strong wheel systems

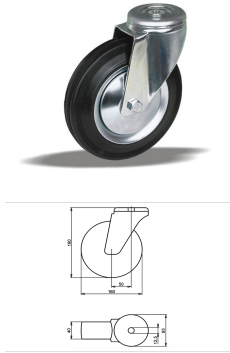
LIV SYSTEMS standard Swivel transport castor with brake + black rubber tyre Ø160 x W40mm for 180kg Prod ID: 30404

ID 30404: Castor overall height 190 mm | 4 mounting holes with distance #\$\$ mm | Wheel with roller bearing and black rubber tyre with hardness 80 ° Shore A | The double brake system, brakes the turning of the wheel and the swivel rotation. | Comfortable d

Product information



- Article code 2-658 A
- SKU 30404
- EAN 3838461304040



Product description

standard Swivel transport castor with an overall height of 190 mm

Wheel diameter x width: 160 x 40 mm

Top plate with 4 mounting holes of 12,5 mm, mounting hole distance #\$\$ mm and top plate outer dimensions: 93 mm

Wheel with plain bearing and black rubber tyre with hardness 80 ° Shore A on steel rim with electrogalvanization zinc plating anti-corrosion protection Cr6-free.

Approved and tested load capacity

Dynamic 180 kg

Static 220 kg

Temperature range:

Continous operation: -20 | +70°C

Short (10 min) exposure: -30 | +80°C

Advantages of this Comfortable drive Swivel transport castor:

- ✓ to manoeuvre
- ✓ performance on uneven floor or obstacles
- ✓ and strong wheel systems

LIV SYSTEMS standard Swivel transport castor + black rubber tyre Ø160 x W40mm for 180kg Prod ID: 34035

ID 34035: Castor overall height 190 mm | 4 mounting holes with distance #\$\$ mm | Wheel with plain bearing and black rubber tyre with hardness 80 ° Shore A | Comfortable drive, easy to manoeuvre, good performance on uneven floor or obstacles, robust and st

Product information

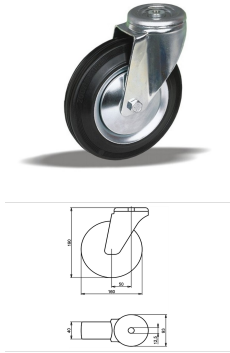
- Article code 2-219 L12
- SKU 34035
- EAN 3838461340352

Specifications

The result of our quality is maximum performance!

[Close](#)

[Close](#)



Product description

standard Swivel transport castor with an overall height of 190 mm

Wheel diameter x width: 160 x 40 mm

Top plate with 4 mounting holes of 12,5 mm, mounting hole distance #\$\$ mm and top plate outer dimensions: 93 mm

Wheel with roller bearing and black rubber tyre with hardness 80 ° Shore A on steel rim with electrogalvanization zinc plating anti-corrosion protection Cr6-free.

Approved and tested load capacity

Dynamic 180 kg

Static 220 kg

Temperature range:

Continious operation: -20 | +70°C

Short (10 min) exposure: -30 | +80°C

Advantages of this Comfortable drive Swivel transport castor:

- ✓ to manoeuvre
- ✓ performance on uneven floor or obstacles
- ✓ and strong wheel systems

LIV SYSTEMS standard Swivel transport castor + black rubber tyre Ø160 x W40mm for 180kg Prod ID: 34034

ID 34034: Castor overall height 190 mm | 4 mounting holes with distance #\$\$ mm | Wheel with roller bearing and black rubber tyre with hardness 80 ° Shore A | Comfortable drive, easy to manoeuvre, good performance on uneven floor or obstacles, robust and s

Product information

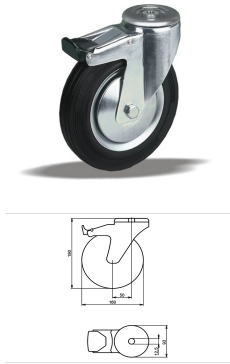
- Article code 2-657 L12
- SKU 34034
- EAN 3838461340345

Specifications

The result of our quality is maximum performance!

[Close](#)

[Close](#)



Product description

standard Swivel transport castor with brake with an overall height of 190 mm

Wheel diameter x width: 160 x 40 mm

Top plate with 4 mounting holes of 12,5 mm, mounting hole distance #\$\$ mm and top plate outer dimensions: 93 mm

Wheel with plain bearing and black rubber tyre with hardness 80 ° Shore A on steel rim with electrogalvanization zinc plating anti-corrosion protection Cr6-free the double brake system, brakes the turning of the wheel and the swivel rotation.

Approved and tested load capacity

Dynamic 180 kg

Static 220 kg

Temperature range:

Continious operation: -20 | +70°C

Short (10 min) exposure: -30 | +80°C

Advantages of this Comfortable drive Swivel transport castor with brake:

- ✓ to manoeuvre
- ✓ performance on uneven floor or obstacles
- ✓ and strong wheel systems

LIV SYSTEMS standard Swivel transport castor with brake + black rubber tyre Ø160 x W40mm for 180kg Prod ID: 34094

ID 34094: Castor overall height 190 mm | 4 mounting holes with distance #\$\$ mm | Wheel with plain bearing and black rubber tyre with hardness 80 ° Shore A | The double brake system, brakes the turning of the wheel and the swivel rotation. | Comfortable dr

Product information

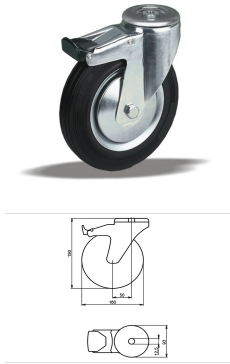
- Article code 2-681 L12
- SKU 34094
- EAN 3838461340949

Specifications

The result of our quality is maximum performance!

[Close](#)

[Close](#)



Product description

standard Swivel transport castor with brake with an overall height of 190 mm

Wheel diameter x width: 160 x 40 mm

Top plate with 4 mounting holes of 12,5 mm, mounting hole distance #\$\$ mm and top plate outer dimensions: 93 mm

Wheel with roller bearing and black rubber tyre with hardness 80 ° Shore A on steel rim with electrogalvanization zinc plating anti-corrosion protection Cr6-free the double brake system, brakes the turning of the wheel and the swivel rotation.

Approved and tested load capacity

Dynamic 180 kg

Static 220 kg

Temperature range:

Continious operation: -20 | +70°C

Short (10 min) exposure: -30 | +80°C

Advantages of this Comfortable drive Swivel transport castor with brake:

- ✓ to manoeuvre
- ✓ performance on uneven floor or obstacles
- ✓ and strong wheel systems

LIV SYSTEMS standard Swivel transport castor with brake + black rubber tyre Ø160 x W40mm for 180kg Prod ID: 34093

ID 34093: Castor overall height 190 mm | 4 mounting holes with distance #\$\$ mm | Wheel with roller bearing and black rubber tyre with hardness 80 ° Shore A | The double brake system, brakes the turning of the wheel and the swivel rotation. | Comfortable d

Product information

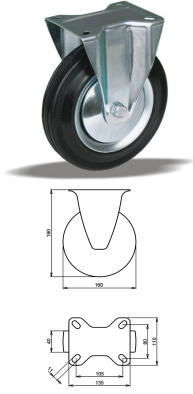
- Article code 2-658 L12
- SKU 34093
- EAN 3838461340932

Specifications

The result of our quality is maximum performance!

[Close](#)

[Close](#)



Product description

standard fixed transport castor with an overall height of 190 mm

Wheel diameter x width: 160 x 40 mm

Top plate with 4 mounting holes of 11 mm, mounting hole distance 105x80 mm and top plate outer dimensions: 135x110 mm

Wheel with plain bearing and black rubber tyre with hardness 80 ° Shore A on steel rim with electrogalvanization zinc plating anti-corrosion protection Cr6-free.

Approved and tested load capacity

Dynamic 180 kg

Static 220 kg

Temperature range:

Continuous operation: -20 | +70°C

Short (10 min) exposure: -30 | +80°C

Advantages of this Comfortable drive fixed transport castor:

- ✓ to manoeuvre
- ✓ performance on uneven floor or obstacles
- ✓ and strong wheel systems

LIV SYSTEMS standard fixed transport castor + black rubber tyre Ø160 x W40mm for 180kg Prod ID: 61517

ID 61517: Castor overall height 190 mm | 4 mounting holes with distance 105x80 mm | Wheel with plain bearing and black rubber tyre with hardness 80 ° Shore A | Comfortable drive, easy to manoeuvre, good performance on uneven floor or obstacles, robust and

Product information

- Article code 2-217 ISO
- SKU 61517
- EAN 3838461615177

Specifications

The result of our quality is maximum performance!

Алматы (7273)495-231
Ангарск (3955)60-70-56
Архангельск (8182)63-90-72
Астрахань (8512)99-46-04
Барнаул (3852)73-04-60
Белгород (4722)40-23-64
Благовещенск (4162)22-76-07
Брянск (4832)59-03-52
Владивосток (423)249-28-31
Владикавказ (8672)28-90-48
Владимир (4922)49-43-18
Волгоград (844)278-03-48
Вологда (8172)26-41-59
Воронеж (473)204-51-73
Екатеринбург (343)384-55-89

Иваново (4932)77-34-06
Ижевск (3412)26-03-58
Иркутск (395)279-98-46
Казань (843)206-01-48
Калининград (4012)72-03-81
Калуга (4842)92-23-67
Кемерово (3842)65-04-62
Киров (8332)68-02-04
Коломна (4966)23-41-49
Кострома (4942)77-07-48
Краснодар (861)203-40-90
Красноярск (391)204-63-61
Курск (4712)77-13-04
Курган (3522)50-90-47
Липецк (4742)52-20-81

Магнитогорск (3519)55-03-13
Москва (495)268-04-70
Мурманск (8152)59-64-93
Набережные Челны (8552)20-53-41
Нижний Новгород (831)429-08-12
Новокузнецк (3843)20-46-81
Ноябрьск (3496)41-32-12
Новосибирск (383)227-86-73
Омск (3812)21-46-40
Орел (4862)44-53-42
Оренбург (3532)37-68-04
Пенза (8412)22-31-16
Петрозаводск (8142)55-98-37
Псков (8112)59-10-37
Пермь (342)205-81-47

Ростов-на-Дону (863)308-18-15
Рязань (4912)46-61-64
Самара (846)206-03-16
Санкт-Петербург (812)309-46-40
Саратов (845)249-38-78
Севастополь (8692)22-31-93
Саранск (8342)22-96-24
Симферополь (3652)67-13-56
Смоленск (4812)29-41-54
Сочи (862)225-72-31
Ставрополь (8652)20-65-13
Сургут (3462)77-98-35
Сыктывкар (8212)25-95-17
Тамбов (4752)50-40-97
Тверь (4822)63-31-35

Тольятти (8482)63-91-07
Томск (3822)98-41-53
Тула (4872)33-79-87
Тюмень (3452)66-21-18
Ульяновск (8422)24-23-59
Улан-Удэ (3012)59-97-51
Уфа (347)229-48-12
Хабаровск (4212)92-98-04
Чебоксары (8352)28-53-07
Челябинск (351)202-03-61
Череповец (8202)49-02-64
Чита (3022)38-34-83
Якутск (4112)23-90-97
Ярославль (4852)69-52-93

Россия +7(495)268-04-70

Казахстан +7(7172)727-132

Киргизия +996(312)96-26-47

<https://liv.nt-rt.ru/> || vis@nt-rt.ru