

Алматы (7273)495-231  
Ангарск (3955)60-70-56  
Архангельск (8182)63-90-72  
Астрахань (8512)99-46-04  
Барнаул (3852)73-04-60  
Белгород (4722)40-23-64  
Благовещенск (4162)22-76-07  
Брянск (4832)59-03-52  
Владивосток (423)249-28-31  
Владикавказ (8672)28-90-48  
Владимир (4922)49-43-18  
Волгоград (844)278-03-48  
Вологда (8172)26-41-59  
Воронеж (473)204-51-73  
Екатеринбург (343)384-55-89

Иваново (4932)77-34-06  
Ижевск (3412)26-03-58  
Иркутск (395)279-98-46  
Казань (843)206-01-48  
Калининград (4012)72-03-81  
Калуга (4842)92-23-67  
Кемерово (3842)65-04-62  
Киров (8332)68-02-04  
Коломна (4966)23-41-49  
Кострома (4942)77-07-48  
Краснодар (861)203-40-90  
Красноярск (391)204-63-61  
Курск (4712)77-13-04  
Курган (3522)50-90-47  
Липецк (4742)52-20-81

Магнитогорск (3519)55-03-13  
Москва (495)268-04-70  
Мурманск (8152)59-64-93  
Набережные Челны (8552)20-53-41  
Нижний Новгород (831)429-08-12  
Новокузнецк (3843)20-46-81  
Ноябрьск (3496)41-32-12  
Новосибирск (383)227-86-73  
Омск (3812)21-46-40  
Орел (4862)44-53-42  
Оренбург (3532)37-68-04  
Пенза (8412)22-31-16  
Петрозаводск (8142)55-98-37  
Псков (8112)59-10-37  
Пермь (342)205-81-47

Ростов-на-Дону (863)308-18-15  
Рязань (4912)46-61-64  
Самара (846)206-03-16  
Санкт-Петербург (812)309-46-40  
Саратов (845)249-38-78  
Севастополь (8692)22-31-93  
Саранск (8342)22-96-24  
Симферополь (3652)67-13-56  
Смоленск (4812)29-41-54  
Сочи (862)225-72-31  
Ставрополь (8652)20-65-13  
Сургут (3462)77-98-35  
Сыктывкар (8212)25-95-17  
Тамбов (4752)50-40-97  
Тверь (4822)63-31-35

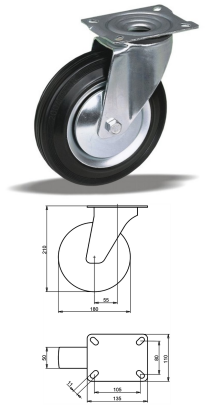
Тольятти (8482)63-91-07  
Томск (3822)98-41-53  
Тула (4872)33-79-87  
Тюмень (3452)66-21-18  
Ульяновск (8422)24-23-59  
Уфа (347)229-48-12  
Хабаровск (4212)92-98-04  
Чебоксары (8352)28-53-07  
Челябинск (351)202-03-61  
Череповец (8202)49-02-64  
Чита (3022)38-34-83  
Якутск (4112)23-90-97  
Ярославль (4852)69-52-93

Россия +7(495)268-04-70

Казахстан +7(7172)727-132

Киргизия +996(312)96-26-47

<https://liv.nt-rt.ru/> || [vis@nt-rt.ru](mailto:vis@nt-rt.ru)



## Product description

standard Swivel transport castor with an overall height of 210 mm

Wheel diameter x width: 180 x 50 mm

Top plate with 4 mounting holes of 11 mm, mounting hole distance 105x80 mm and top plate outer dimensions: 135x110 mm

Wheel with roller bearing and black rubber tyre with hardness 80 ° Shore A on steel rim with electrogalvanization zinc plating anti-corrosion protection Cr6-free.

### Approved and tested load capacity

Dynamic 200 kg

Static 250 kg

### Temperature range:

Continuous operation: -20 | +70°C

Short (10 min) exposure: -30 | +80°C

### Advantages of this Comfortable drive Swivel transport castor:

- ✓ to manoeuvre
- ✓ performance on uneven floor or obstacles
- ✓ and strong wheel systems

## LIV SYSTEMS standard Swivel transport castor + black rubber tyre Ø180 x W50mm for 200kg Prod ID: 54853

ID 54853: Castor overall height 210 mm | 4 mounting holes with distance 105x80 mm | Wheel with roller bearing and black rubber tyre with hardness 80 ° Shore A | Comfortable drive, easy to manoeuvre, good performance on uneven floor or obstacles, robust an

## Product information

- Article code 2-177 ISO
- SKU 54853
- EAN 3838461548536

## Specifications

The result of our quality is maximum performance!

[Close](#)

[Close](#)



## Product description

standard Wheel with roller bearing and black rubber tyre with hardness 80 ° Shore A on steel rim with electrogalvanization zinc plating anti-corrosion protection Cr6-free

Wheel diameter x width: 180 x 50 mm

Axle hole: 20 mm

Hub length: 58 mm

### Approved and tested load capacity

Dynamic 200 kg

Static 250 kg

### Temperature range:

Continuous operation: -20 | +70°C

Short (10 min) exposure: -30 | +80°C

### Advantages of this Comfortable drive wheel:

- ✓ to manoeuvre
- ✓ performance on uneven floor or obstacles
- ✓ and strong wheel systems

## LIV SYSTEMS standard transport wheel + black rubber tyre Ø180 x W50mm for 200kg Prod ID: 68970

ID 68970: standard Wheel with roller bearing and black rubber tyre with hardness 80 ° Shore A on steel rim with electrogalvanization zinc plating anti-corrosion protection Cr6-free | Axle hole: 20 mm | Hub length: 58 mm |

Comfortable drive, easy to manoeuvre

## Product information

- Article code 2-176 ISO
- SKU 68970
- EAN 3838461689703



## Product description

standard Wheel with plain bearing and black rubber tyre with hardness 80 ° Shore A on polypropylene

Wheel diameter x width: 180 x 50 mm

Axle hole: 20 mm

Hub length: 58 mm

### Approved and tested load capacity

Dynamic 200 kg

Static 250 kg

### Temperature range:

Continuous operation: -20 | +70°C

Short (10 min) exposure: -30 | +80°C

### Advantages of this Smooth drive wheel wheel:

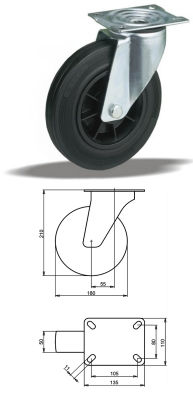
- ✓ wet floor
- ✓ reduces the transmission of both vibration and noise
- ✓ with low obstacles

## LIV SYSTEMS standard transport wheel + black rubber tyre Ø180 x W50mm for 200kg Prod ID: 30265

ID 30265: standard Wheel with plain bearing and black rubber tyre with hardness 80 ° Shore A on polypropylene | Axle hole: 20 mm | Hub length: 58 mm | Smooth drive wheel, for wet floor, rubber reduces the transmission of both vibration and noise, perfect w

## Product information

- Article code 2-946 ISO
- SKU 30265
- EAN 3838461302657



## Product description

standard Swivel transport castor with an overall height of 210 mm

Wheel diameter x width: 180 x 50 mm

Top plate with 4 mounting holes of 11 mm, mounting hole distance 105x80 mm and top plate outer dimensions: 135x110 mm

Wheel with plain bearing and black rubber tyre with hardness 80 ° Shore A on polypropylene.

### Approved and tested load capacity

Dynamic 200 kg

Static 250 kg

### Temperature range:

Continuous operation: -20 | +70°C

Short (10 min) exposure: -30 | +80°C

### Advantages of this Smooth drive wheel Swivel transport castor:

- ✓ wet floor
- ✓ reduces the transmission of both vibration and noise
- ✓ with low obstacles

## LIV SYSTEMS standard Swivel transport castor + black rubber tyre Ø180 x W50mm for 200kg Prod ID: 31145

ID 31145: Castor overall height 210 mm | 4 mounting holes with distance 105x80 mm | Wheel with plain bearing and black rubber tyre with hardness 80 ° Shore A | Smooth drive wheel, for wet floor, rubber reduces the transmission of both vibration and noise,

## Product information

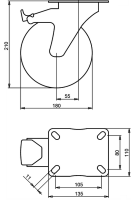
- Article code 2-926 ISO
- SKU 31145
- EAN 3838461311451

## Specifications

The result of our quality is maximum performance!

[Close](#)

[Close](#)



## Product description

standard Swivel transport castor with brake with an overall height of 210 mm

Wheel diameter x width: 180 x 50 mm

Top plate with 4 mounting holes of 11 mm, mounting hole distance 105x80 mm and top plate outer dimensions: 135x110 mm

Wheel with roller bearing and black rubber tyre with hardness 80 ° Shore A on steel rim with electrogalvanization zinc plating anti-corrosion protection Cr6-free the double brake system, brakes the turning of the wheel and the swivel rotation.

### Approved and tested load capacity

Dynamic 200 kg

Static 250 kg

### Temperature range:

Continuous operation: -20 | +70°C

Short (10 min) exposure: -30 | +80°C

### Advantages of this Comfortable drive Swivel transport castor with brake:

- ✓ to manoeuvre
- ✓ performance on uneven floor or obstacles
- ✓ and strong wheel systems

## LIV SYSTEMS standard Swivel transport castor with brake + black rubber tyre Ø180 x W50mm for 200kg Prod ID: 30334

ID 30334: Castor overall height 210 mm | 4 mounting holes with distance 105x80 mm | Wheel with roller bearing and black rubber tyre with hardness 80 ° Shore A | The double brake system, brakes the turning of the wheel and the swivel rotation. | Comfortabl

## Product information

- Article code 2-180 A
- SKU 30334
- EAN 3838461303340

## Specifications

The result of our quality is maximum performance!

[Close](#)

[Close](#)



## Product description

standard Wheel with plain bearing and grey rubber tyre with hardness 83 ° Shore A on polypropylene

Wheel diameter x width: 180 x 50 mm

Axle hole: 20 mm

Hub length: 58 mm

### Approved and tested load capacity

Dynamic 200 kg

Static 250 kg

### Temperature range:

Continous operation: -20 | +70°C

Short (10 min) exposure: -30 | +80°C

### Advantages of this Elegant trip wheel:

- ✓ rubber is non-marking and leaves no marks on the floor
- ✓ reduces the transmission of both vibration and noise
- ✓ and outdoor use

## LIV SYSTEMS standard wheel + grey rubber tyre Ø180 x W50mm for 200kg

### Prod ID: 39375

ID 39375: standard Wheel with plain bearing and grey rubber tyre with hardness 83 ° Shore A on polypropylene | Axle hole: 20 mm | Hub length: 58 mm | Elegant trip, Grey rubber is non-marking and leaves no marks on the floor, rubber reduces the transmission

## Product information

- Article code 2-946 ISO
- SKU 39375
- EAN 3838461393754



## Product description

standard Wheel with roller bearing and grey rubber tyre with hardness 83 ° Shore A on polypropylene

Wheel diameter x width: 180 x 50 mm

Axle hole: 20 mm

Hub length: 58 mm

### Approved and tested load capacity

Dynamic 200 kg

Static 250 kg

### Temperature range:

Continous operation: -20 | +70°C

Short (10 min) exposure: -30 | +80°C

### Advantages of this Elegant trip wheel:

- ✓ rubber is non-marking and leaves no marks on the floor
- ✓ reduces the transmission of both vibration and noise
- ✓ and outdoor use

## LIV SYSTEMS standard wheel + grey rubber tyre Ø180 x W50mm for 200kg

### Prod ID: 39374

ID 39374:standard Wheel with roller bearing and grey rubber tyre with hardness 83 ° Shore A on polypropylene | Axle hole: 20 mm | Hub length: 58 mm | Elegant trip, Grey rubber is non-marking and leaves no marks on the floor, rubber reduces the transmissio

## Product information

- Article code 2-946 A
- SKU 39374
- EAN 3838461393747



## Product description

standard Wheel with roller bearing and black rubber tyre with hardness 80 ° Shore A on polypropylene

Wheel diameter x width: 180 x 50 mm

Axle hole: 20 mm

Hub length: 58 mm

### Approved and tested load capacity

Dynamic 200 kg

Static 250 kg

### Temperature range:

Continuous operation: -20 | +70°C

Short (10 min) exposure: -30 | +80°C

### Advantages of this Smooth drive wheel wheel:

- ✓ wet floor
- ✓ reduces the transmission of both vibration and noise
- ✓ with low obstacles

## LIV SYSTEMS standard transport wheel + black rubber tyre Ø180 x W50mm for 200kg Prod ID: 30264

ID 30264: standard Wheel with roller bearing and black rubber tyre with hardness 80 ° Shore A on polypropylene | Axle hole: 20 mm | Hub length: 58 mm | Smooth drive wheel, for wet floor, rubber reduces the transmission of both vibration and noise, perfect

## Product information

- Article code 2-946 A
- SKU 30264
- EAN 3838461302640





## Product description

standard Wheel with plain bearing and black rubber tyre with hardness 80 ° Shore A on steel rim with electrogalvanization zinc plating anti-corrosion protection Cr6-free

Wheel diameter x width: 180 x 50 mm

Axle hole: 20 mm

Hub length: 58 mm

### Approved and tested load capacity

Dynamic 200 kg

Static 250 kg

### Temperature range:

Continuous operation: -20 | +70°C

Short (10 min) exposure: -30 | +80°C

### Advantages of this Comfortable drive wheel:

- ✓ to manoeuvre
- ✓ performance on uneven floor or obstacles
- ✓ and strong wheel systems

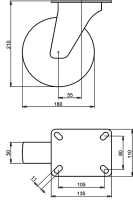
## LIV SYSTEMS standard transport wheel + black rubber tyre Ø180 x W50mm for 200kg Prod ID: 68971

ID 68971: standard Wheel with plain bearing and black rubber tyre with hardness 80 ° Shore A on steel rim with electrogalvanization zinc plating anti-corrosion protection Cr6-free | Axle hole: 20 mm | Hub length: 58 mm |

Comfortable drive, easy to manoeuvre

## Product information

- Article code 2-201 ISO
- SKU 68971
- EAN 3838461689710



## Product description

standard Swivel transport castor with an overall height of 210 mm

Wheel diameter x width: 180 x 50 mm

Top plate with 4 mounting holes of 11 mm, mounting hole distance 105x80 mm and top plate outer dimensions: 135x110 mm

Wheel with plain bearing and black rubber tyre with hardness 80 ° Shore A on steel rim with electrogalvanization zinc plating anti-corrosion protection Cr6-free.

### Approved and tested load capacity

Dynamic 200 kg

Static 250 kg

### Temperature range:

Continuous operation: -20 | +70°C

Short (10 min) exposure: -30 | +80°C

### Advantages of this Comfortable drive Swivel transport castor:

- ✓ to manoeuvre
- ✓ performance on uneven floor or obstacles
- ✓ and strong wheel systems

## LIV SYSTEMS standard Swivel transport castor + black rubber tyre Ø180 x W50mm for 200kg Prod ID: 68973

ID 68973: Castor overall height 210 mm | 4 mounting holes with distance 105x80 mm | Wheel with plain bearing and black rubber tyre with hardness 80 ° Shore A | Comfortable drive, easy to manoeuvre, good performance on uneven floor or obstacles, robust and

## Product information

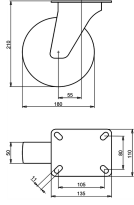
- Article code 2-204 ISO
- SKU 68973
- EAN 3838461689734

## Specifications

The result of our quality is maximum performance!

[Close](#)

[Close](#)



## Product description

standard Swivel castor with an overall height of 210 mm

Wheel diameter x width: 180 x 50 mm

Top plate with 4 mounting holes of 11 mm, mounting hole distance 105x80 mm and top plate outer dimensions: 135x110 mm

Wheel with plain bearing and grey rubber tyre with hardness 83 ° Shore A on polypropylene.

### Approved and tested load capacity

Dynamic 200 kg

Static 250 kg

### Temperature range:

Continuous operation: -20 | +70°C

Short (10 min) exposure: -30 | +80°C

### Advantages of this Elegant trip Swivel castor:

- ✓ rubber is non-marking and leaves no marks on the floor
- ✓ reduces the transmission of both vibration and noise
- ✓ and outdoor use

## LIV SYSTEMS standard Swivel castor + grey rubber tyre Ø180 x W50mm for 200kg Prod ID: 39405

ID 39405: Castor overall height 210 mm | 4 mounting holes with distance 105x80 mm | Wheel with plain bearing and grey rubber tyre with hardness 83 ° Shore A | Elegant trip, Grey rubber is non-marking and leaves no marks on the floor, rubber reduces the tr

## Product information

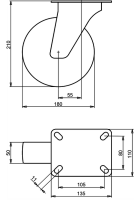
- Article code 2-926 ISO
- SKU 39405
- EAN 3838461394058

## Specifications

The result of our quality is maximum performance!

[Close](#)

[Close](#)



## Product description

standard Swivel castor with an overall height of 210 mm

Wheel diameter x width: 180 x 50 mm

Top plate with 4 mounting holes of 11 mm, mounting hole distance 105x80 mm and top plate outer dimensions: 135x110 mm

Wheel with roller bearing and grey rubber tyre with hardness 83 ° Shore A on polypropylene.

### Approved and tested load capacity

Dynamic 200 kg

Static 250 kg

### Temperature range:

Continuous operation: -20 | +70°C

Short (10 min) exposure: -30 | +80°C

### Advantages of this Elegant trip Swivel castor:

- ✓ rubber is non-marking and leaves no marks on the floor
- ✓ reduces the transmission of both vibration and noise
- ✓ and outdoor use

## LIV SYSTEMS standard Swivel castor + grey rubber tyre Ø180 x W50mm for 200kg Prod ID: 39404

ID 39404: Castor overall height 210 mm | 4 mounting holes with distance 105x80 mm | Wheel with roller bearing and grey rubber tyre with hardness 83 ° Shore A | Elegant trip, Grey rubber is non-marking and leaves no marks on the floor, rubber reduces the t

## Product information

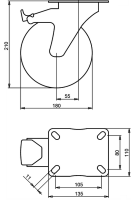
- Article code 2-919 ISO
- SKU 39404
- EAN 3838461394041

## Specifications

The result of our quality is maximum performance!

[Close](#)

[Close](#)



## Product description

standard Swivel castor with brake with an overall height of 210 mm

Wheel diameter x width: 180 x 50 mm

Top plate with 4 mounting holes of 11 mm, mounting hole distance 105x110 mm and top plate outer dimensions: 135x110 mm

Wheel with plain bearing and grey rubber tyre with hardness 83 ° Shore A on polypropylene

the double brake system, brakes the turning of the wheel and the swivel rotation.

### Approved and tested load capacity

Dynamic 200 kg

Static 250 kg

### Temperature range:

Continuous operation: -20 | +70°C

Short (10 min) exposure: -30 | +80°C

### Advantages of this Elegant trip Swivel castor with brake:

- ✓ rubber is non-marking and leaves no marks on the floor
- ✓ reduces the transmission of both vibration and noise
- ✓ and outdoor use

## LIV SYSTEMS standard Swivel castor with brake + grey rubber tyre Ø180 x W50mm for 200kg Prod ID: 39445

ID 39445: Castor overall height 210 mm | 4 mounting holes with distance 105x110 mm | Wheel with plain bearing and grey rubber tyre with hardness 83 ° Shore A | The double brake system, brakes the turning of the wheel and the swivel rotation. | Elegant tri

## Product information

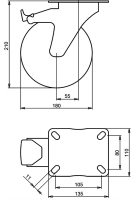
- Article code 2-940 ISO
- SKU 39445
- EAN 3838461394454

## Specifications

The result of our quality is maximum performance!

[Close](#)

[Close](#)



## Product description

standard Swivel castor with brake with an overall height of 210 mm

Wheel diameter x width: 180 x 50 mm

Top plate with 4 mounting holes of 11 mm, mounting hole distance 105x110 mm and top plate outer dimensions: 135x110 mm

Wheel with roller bearing and grey rubber tyre with hardness 83 ° Shore A on polypropylene

the double brake system, brakes the turning of the wheel and the swivel rotation.

### Approved and tested load capacity

Dynamic 200 kg

Static 250 kg

### Temperature range:

Continuous operation: -20 | +70°C

Short (10 min) exposure: -30 | +80°C

### Advantages of this Elegant trip Swivel castor with brake:

- ✓ rubber is non-marking and leaves no marks on the floor
- ✓ reduces the transmission of both vibration and noise
- ✓ and outdoor use

## LIV SYSTEMS standard Swivel castor with brake + grey rubber tyre Ø180 x W50mm for 200kg Prod ID: 39444

ID 39444: Castor overall height 210 mm | 4 mounting holes with distance 105x110 mm | Wheel with roller bearing and grey rubber tyre with hardness 83 ° Shore A | The double brake system, brakes the turning of the wheel and the swivel rotation. | Elegant tr

## Product information

- Article code 2-933 ISO
- SKU 39444
- EAN 3838461394447

## Specifications

The result of our quality is maximum performance!

[Close](#)

[Close](#)



## Product description

standard Swivel castor with an overall height of 210 mm

Wheel diameter x width: 180 x 50 mm

Top plate with 4 mounting holes of #\$\$ mm, mounting hole distance #\$\$ mm and top plate outer dimensions: 93 mm

Wheel with plain bearing and grey rubber tyre with hardness 83 ° Shore A on polypropylene.

### Approved and tested load capacity

Dynamic 200 kg

Static 250 kg

### Temperature range:

Continuous operation: -20 | +70°C

Short (10 min) exposure: -30 | +80°C

### Advantages of this Elegant trip Swivel castor:

- ✓ rubber is non-marking and leaves no marks on the floor
- ✓ reduces the transmission of both vibration and noise
- ✓ and outdoor use

## LIV SYSTEMS standard Swivel castor + grey rubber tyre Ø180 x W50mm for 200kg Prod ID: 39493

ID 39493: Castor overall height 210 mm | 4 mounting holes with distance #\$\$ mm | Wheel with plain bearing and grey rubber tyre with hardness 83 ° Shore A | Elegant trip, Grey rubber is non-marking and leaves no marks on the floor, rubber reduces the trans

## Product information

- Article code 2-977 ISO
- SKU 39493
- EAN 3838461394935



## Product description

standard Swivel castor with an overall height of 210 mm

Wheel diameter x width: 180 x 50 mm

Top plate with 4 mounting holes of #\$\$ mm, mounting hole distance #\$\$ mm and top plate outer dimensions: 93 mm

Wheel with roller bearing and grey rubber tyre with hardness 83 ° Shore A on polypropylene.

### Approved and tested load capacity

Dynamic 200 kg

Static 250 kg

### Temperature range:

Continuous operation: -20 | +70°C

Short (10 min) exposure: -30 | +80°C

### Advantages of this Elegant trip Swivel castor:

- ✓ rubber is non-marking and leaves no marks on the floor
- ✓ reduces the transmission of both vibration and noise
- ✓ and outdoor use

## LIV SYSTEMS standard Swivel castor + grey rubber tyre Ø180 x W50mm for 200kg Prod ID: 39485

ID 39485: Castor overall height 210 mm | 4 mounting holes with distance #\$\$ mm | Wheel with roller bearing and grey rubber tyre with hardness 83 ° Shore A | Elegant trip, Grey rubber is non-marking and leaves no marks on the floor, rubber reduces the tran

## Product information

- Article code 2-970 ISO
- SKU 39485
- EAN 3838461394850





## Product description

standard Swivel castor with brake with an overall height of 210 mm

Wheel diameter x width: 180 x 50 mm

Top plate with 4 mounting holes of 40 mm, mounting hole distance 100 mm and top plate outer dimensions: 93 mm

Wheel with plain bearing and grey rubber tyre with hardness 83 ° Shore A on polypropylene the double brake system, brakes the turning of the wheel and the swivel rotation.

### Approved and tested load capacity

Dynamic 200 kg

Static 250 kg

### Temperature range:

Continuous operation: -20 | +70°C

Short (10 min) exposure: -30 | +80°C


### Advantages of this Elegant trip Swivel castor with brake:

- ✓ rubber is non-marking and leaves no marks on the floor
- ✓ reduces the transmission of both vibration and noise
- ✓ and outdoor use

## LIV SYSTEMS standard Swivel castor with brake + grey rubber tyre Ø180 x W50mm for 200kg Prod ID: 39534

ID 39534: Castor overall height 210 mm | 4 mounting holes with distance 100 mm | Wheel with plain bearing and grey rubber tyre with hardness 83 ° Shore A | The double brake system, brakes the turning of the wheel and the swivel rotation. | Elegant trip, G

## Product information

- 
- Article code 2-984 ISO
  - SKU 39534
  - EAN 3838461395345



## Product description

standard Swivel castor with brake with an overall height of 210 mm

Wheel diameter x width: 180 x 50 mm

Top plate with 4 mounting holes of 40 mm, mounting hole distance 100 mm and top plate outer dimensions: 93 mm

Wheel with roller bearing and grey rubber tyre with hardness 83 ° Shore A on polypropylene the double brake system, brakes the turning of the wheel and the swivel rotation.

### Approved and tested load capacity

Dynamic 200 kg

Static 250 kg

### Temperature range:

Continuous operation: -20 | +70°C

Short (10 min) exposure: -30 | +80°C

### Advantages of this Elegant trip Swivel castor with brake:

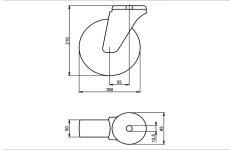
- ✓ rubber is non-marking and leaves no marks on the floor
- ✓ reduces the transmission of both vibration and noise
- ✓ and outdoor use

## LIV SYSTEMS standard Swivel castor with brake + grey rubber tyre Ø180 x W50mm for 200kg Prod ID: 39535

ID 39535: Castor overall height 210 mm | 4 mounting holes with distance 100 mm | Wheel with roller bearing and grey rubber tyre with hardness 83 ° Shore A | The double brake system, brakes the turning of the wheel and the swivel rotation. | Elegant trip,

## Product information

- 
- Article code 2-991 ISO
  - SKU 39535
  - EAN 3838461395352



## Product description

standard Swivel castor with an overall height of 210 mm

Wheel diameter x width: 180 x 50 mm

Top plate with 4 mounting holes of 12,5 mm, mounting hole distance #\$\$ mm and top plate outer dimensions: 93 mm

Wheel with plain bearing and grey rubber tyre with hardness 83 ° Shore A on polypropylene.

### Approved and tested load capacity

Dynamic 200 kg

Static 250 kg

### Temperature range:

Continous operation: -20 | +70°C

Short (10 min) exposure: -30 | +80°C

### Advantages of this Elegant trip Swivel castor:

- ✓ rubber is non-marking and leaves no marks on the floor
- ✓ reduces the transmission of both vibration and noise
- ✓ and outdoor use

## LIV SYSTEMS standard Swivel castor + grey rubber tyre Ø180 x W50mm for 200kg Prod ID: 39574

ID 39574: Castor overall height 210 mm | 4 mounting holes with distance #\$\$ mm | Wheel with plain bearing and grey rubber tyre with hardness 83 ° Shore A | Elegant trip, Grey rubber is non-marking and leaves no marks on the floor, rubber reduces the trans

## Product information

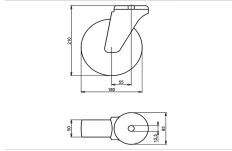
- Article code 2-977 L12
- SKU 39574
- EAN 3838461395741

## Specifications

The result of our quality is maximum performance!

[Close](#)

[Close](#)



## Product description

standard Swivel castor with an overall height of 210 mm

Wheel diameter x width: 180 x 50 mm

Top plate with 4 mounting holes of 12,5 mm, mounting hole distance #\$\$ mm and top plate outer dimensions: 93 mm

Wheel with roller bearing and grey rubber tyre with hardness 83 ° Shore A on polypropylene.

### Approved and tested load capacity

Dynamic 200 kg

Static 250 kg

### Temperature range:

Continious operation: -20 | +70°C

Short (10 min) exposure: -30 | +80°C

### Advantages of this Elegant trip Swivel castor:

- ✓ rubber is non-marking and leaves no marks on the floor
- ✓ reduces the transmission of both vibration and noise
- ✓ and outdoor use

## LIV SYSTEMS standard Swivel castor + grey rubber tyre Ø180 x W50mm for 200kg Prod ID: 39573

ID 39573: Castor overall height 210 mm | 4 mounting holes with distance #\$\$ mm | Wheel with roller bearing and grey rubber tyre with hardness 83 ° Shore A | Elegant trip, Grey rubber is non-marking and leaves no marks on the floor, rubber reduces the tran

## Product information

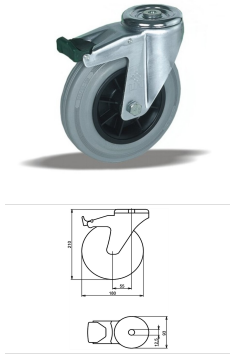
- Article code 2-970 L12
- SKU 39573
- EAN 3838461395734

## Specifications

The result of our quality is maximum performance!

[Close](#)

[Close](#)



## Product description

standard Swivel castor with brake with an overall height of 210 mm  
Wheel diameter x width: 180 x 50 mm  
Top plate with 4 mounting holes of 12,5 mm, mounting hole distance #\$\$ mm and top plate outer dimensions: 93 mm  
Wheel with plain bearing and grey rubber tyre with hardness 83 ° Shore A on polypropylene  
the double brake system, brakes the turning of the wheel and the swivel rotation.

### Approved and tested load capacity

Dynamic 200 kg  
Static 250 kg

### Temperature range:

Continious operation: -20 | +70°C  
Short (10 min) exposure: -30 | +80°C

### Advantages of this Elegant trip Swivel castor with brake:

- ✓ rubber is non-marking and leaves no marks on the floor
- ✓ reduces the transmission of both vibration and noise
- ✓ and outdoor use

## LIV SYSTEMS standard Swivel castor with brake + grey rubber tyre Ø180 x W50mm for 200kg Prod ID: 39623

ID 39623: Castor overall height 210 mm | 4 mounting holes with distance #\$\$ mm | Wheel with plain bearing and grey rubber tyre with hardness 83 ° Shore A | The double brake system, brakes the turning of the wheel and the swivel rotation. | Elegant trip, G

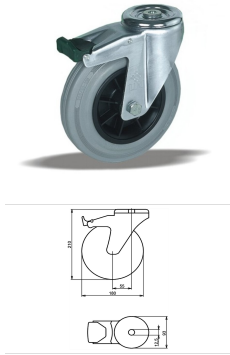
## Product information

- Article code 2-991 L12
- SKU 39623
- EAN 3838461396236

## Specifications

The result of our quality is maximum performance!

[Close](#)  
[Close](#)



## Product description

standard Swivel castor with brake with an overall height of 210 mm  
 Wheel diameter x width: 180 x 50 mm  
 Top plate with 4 mounting holes of 12,5 mm, mounting hole distance #\$\$ mm and top plate outer dimensions: 93 mm  
 Wheel with roller bearing and grey rubber tyre with hardness 83 ° Shore A on polypropylene  
 the double brake system, brakes the turning of the wheel and the swivel rotation.

### Approved and tested load capacity

Dynamic 200 kg  
 Static 250 kg

### Temperature range:

Continious operation: -20 | +70°C  
 Short (10 min) exposure: -30 | +80°C

### Advantages of this Elegant trip Swivel castor with brake:

- ✓ rubber is non-marking and leaves no marks on the floor
- ✓ reduces the transmission of both vibration and noise
- ✓ and outdoor use

## LIV SYSTEMS standard Swivel castor with brake + grey rubber tyre Ø180 x W50mm for 200kg Prod ID: 39615

ID 39615: Castor overall height 210 mm | 4 mounting holes with distance #\$\$ mm | Wheel with roller bearing and grey rubber tyre with hardness 83 ° Shore A | The double brake system, brakes the turning of the wheel and the swivel rotation. | Elegant trip,

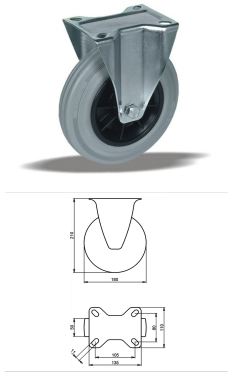
## Product information

- Article code 2-984 L12
- SKU 39615
- EAN 3838461396151

## Specifications

The result of our quality is maximum performance!

[Close](#)  
[Close](#)



## Product description

standard Fixed castor with an overall height of 210 mm

Wheel diameter x width: 180 x 50 mm

Top plate with 4 mounting holes of 11 mm, mounting hole distance 105x80 mm and top plate outer dimensions: 135x110 mm

Wheel with plain bearing and grey rubber tyre with hardness 83 ° Shore A on polypropylene.

### Approved and tested load capacity

Dynamic 200 kg

Static 250 kg

### Temperature range:

Continuous operation: -20 | +70°C

Short (10 min) exposure: -30 | +80°C

### Advantages of this Elegant trip Fixed castor:

- ✓ rubber is non-marking and leaves no marks on the floor
- ✓ reduces the transmission of both vibration and noise
- ✓ and outdoor use

## LIV SYSTEMS standard Fixed castor + grey rubber tyre Ø180 x W50mm for 200kg Prod ID: 39655

ID 39655: Castor overall height 210 mm | 4 mounting holes with distance 105x80 mm | Wheel with plain bearing and grey rubber tyre with hardness 83 ° Shore A | Elegant trip, Grey rubber is non-marking and leaves no marks on the floor, rubber reduces the tr

## Product information

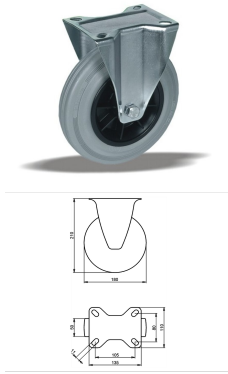
- Article code 2-963 ISO
- SKU 39655
- EAN 3838461396557

## Specifications

The result of our quality is maximum performance!

[Close](#)

[Close](#)



## Product description

standard Fixed castor with an overall height of 210 mm

Wheel diameter x width: 180 x 50 mm

Top plate with 4 mounting holes of 11 mm, mounting hole distance 105x80 mm and top plate outer dimensions: 135x110 mm

Wheel with roller bearing and grey rubber tyre with hardness 83 ° Shore A on polypropylene.

### Approved and tested load capacity

Dynamic 200 kg

Static 250 kg

### Temperature range:

Continuous operation: -20 | +70°C

Short (10 min) exposure: -30 | +80°C

### Advantages of this Elegant trip Fixed castor:

- ✓ rubber is non-marking and leaves no marks on the floor
- ✓ reduces the transmission of both vibration and noise
- ✓ and outdoor use

## LIV SYSTEMS standard Fixed castor + grey rubber tyre Ø180 x W50mm for 200kg Prod ID: 39654

ID 39654: Castor overall height 210 mm | 4 mounting holes with distance 105x80 mm | Wheel with roller bearing and grey rubber tyre with hardness 83 ° Shore A | Elegant trip, Grey rubber is non-marking and leaves no marks on the floor, rubber reduces the t

## Product information

- Article code 2-956 ISO
- SKU 39654
- EAN 3838461396540

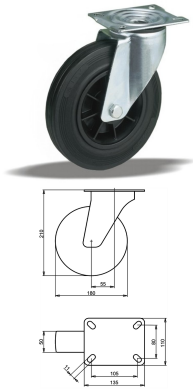
## Specifications

The result of our quality is maximum performance!

[Close](#)

[Close](#)





## Product description

standard Swivel transport castor with an overall height of 210 mm

Wheel diameter x width: 180 x 50 mm

Top plate with 4 mounting holes of 11 mm, mounting hole distance 105x80 mm and top plate outer dimensions: 135x110 mm

Wheel with roller bearing and black rubber tyre with hardness 80 ° Shore A on polypropylene.

### Approved and tested load capacity

Dynamic 200 kg

Static 250 kg

### Temperature range:

Continuous operation: -20 | +70°C

Short (10 min) exposure: -30 | +80°C

### Advantages of this Smooth drive wheel Swivel transport castor:

- ✓ wet floor
- ✓ reduces the transmission of both vibration and noise
- ✓ with low obstacles

## LIV SYSTEMS standard Swivel transport castor + black rubber tyre Ø180 x W50mm for 200kg Prod ID: 31144

ID 31144: Castor overall height 210 mm | 4 mounting holes with distance 105x80 mm | Wheel with roller bearing and black rubber tyre with hardness 80 ° Shore A | Smooth drive wheel, for wet floor, rubber reduces the transmission of both vibration and noise

## Product information

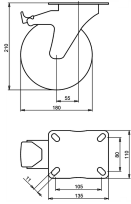
- Article code 2-919 ISO
- SKU 31144
- EAN 3838461311444

## Specifications

The result of our quality is maximum performance!

[Close](#)

[Close](#)



## Product description

standard Swivel transport castor with brake with an overall height of 210 mm

Wheel diameter x width: 180 x 50 mm

Top plate with 4 mounting holes of 11 mm, mounting hole distance 105x80 mm and top plate outer dimensions: 135x110 mm

Wheel with plain bearing and black rubber tyre with hardness 80 ° Shore A on polypropylene

the double brake system, brakes the turning of the wheel and the swivel rotation.

### Approved and tested load capacity

Dynamic 200 kg

Static 250 kg

### Temperature range:

Continuous operation: -20 | +70°C

Short (10 min) exposure: -30 | +80°C

### Advantages of this Smooth drive wheel Swivel transport castor with brake:

- ✓ wet floor
- ✓ reduces the transmission of both vibration and noise
- ✓ with low obstacles

## LIV SYSTEMS standard Swivel transport castor with brake + black rubber tyre Ø180 x W50mm for 200kg Prod ID: 31225

ID 31225: Castor overall height 210 mm | 4 mounting holes with distance 105x80 mm | Wheel with plain bearing and black rubber tyre with hardness 80 ° Shore A | The double brake system, brakes the turning of the wheel and the swivel rotation. | Smooth driv

## Product information

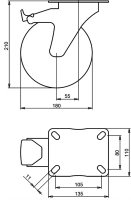
- Article code 2-940 ISO
- SKU 31225
- EAN 3838461312250

## Specifications

The result of our quality is maximum performance!

[Close](#)

[Close](#)



## Product description

standard Swivel transport castor with brake with an overall height of 210 mm

Wheel diameter x width: 180 x 50 mm

Top plate with 4 mounting holes of 11 mm, mounting hole distance 105x80 mm and top plate outer dimensions: 135x110 mm

Wheel with roller bearing and black rubber tyre with hardness 80 ° Shore A on polypropylene

the double brake system, brakes the turning of the wheel and the swivel rotation.

### Approved and tested load capacity

Dynamic 200 kg

Static 250 kg

### Temperature range:

Continious operation: -20 | +70°C

Short (10 min) exposure: -30 | +80°C

### Advantages of this Smooth drive wheel Swivel transport castor with brake:

- ✓ wet floor
- ✓ reduces the transmission of both vibration and noise
- ✓ with low obstacles

## LIV SYSTEMS standard Swivel transport castor with brake + black rubber tyre Ø180 x W50mm for 200kg Prod ID: 31224

ID 31224: Castor overall height 210 mm | 4 mounting holes with distance 105x80 mm | Wheel with roller bearing and black rubber tyre with hardness 80 ° Shore A | The double brake system, brakes the turning of the wheel and the swivel rotation. | Smooth dri

## Product information

- Article code 2-933 ISO
- SKU 31224
- EAN 3838461312243

## Specifications

The result of our quality is maximum performance!

[Close](#)

[Close](#)



## Product description

standard Swivel transport castor with an overall height of 210 mm

Wheel diameter x width: 180 x 50 mm

Top plate with 4 mounting holes of #5 mm, mounting hole distance #50 mm and top plate outer dimensions: 93 mm

Wheel with plain bearing and black rubber tyre with hardness 80 ° Shore A on polypropylene.

### Approved and tested load capacity

Dynamic 200 kg

Static 250 kg

### Temperature range:

Continuous operation: -20 | +70°C

Short (10 min) exposure: -30 | +80°C

### Advantages of this Smooth drive wheel Swivel transport castor:

- ✓ wet floor
- ✓ reduces the transmission of both vibration and noise
- ✓ with low obstacles

## LIV SYSTEMS standard Swivel transport castor + black rubber tyre Ø180 x W50mm for 200kg Prod ID: 31324

ID 31324: Castor overall height 210 mm | 4 mounting holes with distance #50 mm | Wheel with plain bearing and black rubber tyre with hardness 80 ° Shore A | Smooth drive wheel, for wet floor, rubber reduces the transmission of both vibration and noise, pe

## Product information

- Article code 2-977 ISO
- SKU 31324
- EAN 3838461313240



## Product description

standard Swivel transport castor with an overall height of 210 mm

Wheel diameter x width: 180 x 50 mm

Top plate with 4 mounting holes of #\$\$ mm, mounting hole distance #\$\$ mm and top plate outer dimensions: 93 mm

Wheel with roller bearing and black rubber tyre with hardness 80 ° Shore A on polypropylene.

### Approved and tested load capacity

Dynamic 200 kg

Static 250 kg

### Temperature range:

Continuous operation: -20 | +70°C

Short (10 min) exposure: -30 | +80°C

### Advantages of this Smooth drive wheel Swivel transport castor:

- ✓ wet floor
- ✓ reduces the transmission of both vibration and noise
- ✓ with low obstacles

## LIV SYSTEMS standard Swivel transport castor + black rubber tyre Ø180 x W50mm for 200kg Prod ID: 31314

ID 31314: Castor overall height 210 mm | 4 mounting holes with distance #\$\$ mm | Wheel with roller bearing and black rubber tyre with hardness 80 ° Shore A | Smooth drive wheel, for wet floor, rubber reduces the transmission of both vibration and noise, p

## Product information

- Article code 2-970 ISO
- SKU 31314
- EAN 3838461313141



## Product description

standard Swivel transport castor with brake with an overall height of 210 mm

Wheel diameter x width: 180 x 50 mm

Top plate with 4 mounting holes of #\$\$ mm, mounting hole distance #\$\$ mm and top plate outer dimensions: 93 mm

Wheel with plain bearing and black rubber tyre with hardness 80 ° Shore A on polypropylene the double brake system, brakes the turning of the wheel and the swivel rotation.

### Approved and tested load capacity

Dynamic 200 kg

Static 250 kg

### Temperature range:

Continuous operation: -20 | +70°C

Short (10 min) exposure: -30 | +80°C

### Advantages of this Smooth drive wheel Swivel transport castor with brake:

- ✓ wet floor
- ✓ reduces the transmission of both vibration and noise
- ✓ with low obstacles

## LIV SYSTEMS standard Swivel transport castor with brake + black rubber tyre Ø180 x W50mm for 200kg Prod ID: 31415

ID 31415: Castor overall height 210 mm | 4 mounting holes with distance #\$\$ mm | Wheel with plain bearing and black rubber tyre with hardness 80 ° Shore A | The double brake system, brakes the turning of the wheel and the swivel rotation. | Smooth drive w

## Product information

- 
- Article code 2-991 ISO
  - SKU 31415
  - EAN 3838461314155



## Product description

standard Swivel transport castor with brake with an overall height of 210 mm

Wheel diameter x width: 180 x 50 mm

Top plate with 4 mounting holes of #\$\$ mm, mounting hole distance #\$\$ mm and top plate outer dimensions: 93 mm

Wheel with roller bearing and black rubber tyre with hardness 80 ° Shore A on polypropylene the double brake system, brakes the turning of the wheel and the swivel rotation.

### Approved and tested load capacity

Dynamic 200 kg

Static 250 kg

### Temperature range:

Continuous operation: -20 | +70°C

Short (10 min) exposure: -30 | +80°C

### Advantages of this Smooth drive wheel Swivel transport castor with brake:

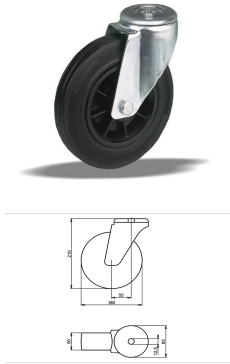
- ✓ wet floor
- ✓ reduces the transmission of both vibration and noise
- ✓ with low obstacles

## LIV SYSTEMS standard Swivel transport castor with brake + black rubber tyre Ø180 x W50mm for 200kg Prod ID: 31414

ID 31414: Castor overall height 210 mm | 4 mounting holes with distance #\$\$ mm | Wheel with roller bearing and black rubber tyre with hardness 80 ° Shore A | The double brake system, brakes the turning of the wheel and the swivel rotation. | Smooth drive

## Product information

- 
- Article code 2-984 ISO
  - SKU 31414
  - EAN 3838461314148



## Product description

standard Swivel transport castor with an overall height of 210 mm

Wheel diameter x width: 180 x 50 mm

Top plate with 4 mounting holes of 12,5 mm, mounting hole distance #\$\$ mm and top plate outer dimensions: 93 mm

Wheel with plain bearing and black rubber tyre with hardness 80 ° Shore A on polypropylene.

### Approved and tested load capacity

Dynamic 200 kg

Static 250 kg

### Temperature range:

Continous operation: -20 | +70°C

Short (10 min) exposure: -30 | +80°C

### Advantages of this Smooth drive wheel Swivel transport castor:

- ✓ wet floor
- ✓ reduces the transmission of both vibration and noise
- ✓ with low obstacles

## LIV SYSTEMS standard Swivel transport castor + black rubber tyre Ø180 x W50mm for 200kg Prod ID: 34184

ID 34184: Castor overall height 210 mm | 4 mounting holes with distance #\$\$ mm | Wheel with plain bearing and black rubber tyre with hardness 80 ° Shore A | Smooth drive wheel, for wet floor, rubber reduces the transmission of both vibration and noise, pe

## Product information

- Article code 2-977 L12
- SKU 34184
- EAN 3838461341847

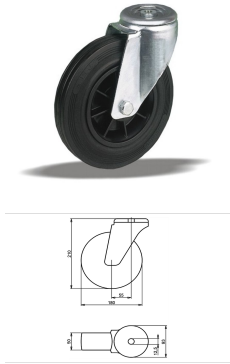
## Specifications

The result of our quality is maximum performance!

[Close](#)

[Close](#)





## Product description

standard Swivel transport castor with an overall height of 210 mm

Wheel diameter x width: 180 x 50 mm

Top plate with 4 mounting holes of 12,5 mm, mounting hole distance #\$\$ mm and top plate outer dimensions: 93 mm

Wheel with roller bearing and black rubber tyre with hardness 80 ° Shore A on polypropylene.

### Approved and tested load capacity

Dynamic 200 kg

Static 250 kg

### Temperature range:

Continious operation: -20 | +70°C

Short (10 min) exposure: -30 | +80°C

### Advantages of this Smooth drive wheel Swivel transport castor:

- ✓ wet floor
- ✓ reduces the transmission of both vibration and noise
- ✓ with low obstacles

## LIV SYSTEMS standard Swivel transport castor + black rubber tyre Ø180 x W50mm for 200kg Prod ID: 34183

ID 34183: Castor overall height 210 mm | 4 mounting holes with distance #\$\$ mm | Wheel with roller bearing and black rubber tyre with hardness 80 ° Shore A | Smooth drive wheel, for wet floor, rubber reduces the transmission of both vibration and noise, p

## Product information

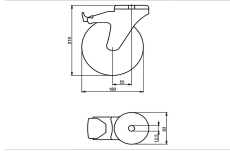
- Article code 2-970 L12
- SKU 34183
- EAN 3838461341830

## Specifications

The result of our quality is maximum performance!

[Close](#)

[Close](#)



## Product description

standard Swivel transport castor with brake with an overall height of 210 mm  
 Wheel diameter x width: 180 x 50 mm  
 Top plate with 4 mounting holes of 12,5 mm, mounting hole distance #\$\$ mm and top plate outer dimensions: 93 mm  
 Wheel with plain bearing and black rubber tyre with hardness 80 ° Shore A on polypropylene  
 the double brake system, brakes the turning of the wheel and the swivel rotation.

### Approved and tested load capacity

Dynamic 200 kg  
 Static 250 kg

### Temperature range:

Continious operation: -20 | +70°C  
 Short (10 min) exposure: -30 | +80°C

### Advantages of this Smooth drive wheel Swivel transport castor with brake:

- ✓ wet floor
- ✓ reduces the transmission of both vibration and noise
- ✓ with low obstacles

## LIV SYSTEMS standard Swivel transport castor with brake + black rubber tyre Ø180 x W50mm for 200kg Prod ID: 34243

ID 34243: Castor overall height 210 mm | 4 mounting holes with distance #\$\$ mm | Wheel with plain bearing and black rubber tyre with hardness 80 ° Shore A | The double brake system, brakes the turning of the wheel and the swivel rotation. | Smooth drive w

## Product information

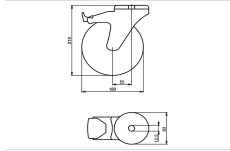
- Article code 2-991 L12
- SKU 34243
- EAN 3838461342431

## Specifications

The result of our quality is maximum performance!

[Close](#)

[Close](#)



## Product description

standard Swivel transport castor with brake with an overall height of 210 mm

Wheel diameter x width: 180 x 50 mm

Top plate with 4 mounting holes of 12,5 mm, mounting hole distance #\$\$ mm and top plate outer dimensions: 93 mm

Wheel with roller bearing and black rubber tyre with hardness 80 ° Shore A on polypropylene

the double brake system, brakes the turning of the wheel and the swivel rotation.

### Approved and tested load capacity

Dynamic 200 kg

Static 250 kg

### Temperature range:

Continious operation: -20 | +70°C

Short (10 min) exposure: -30 | +80°C

### Advantages of this Smooth drive wheel Swivel transport castor with brake:

- ✓ wet floor
- ✓ reduces the transmission of both vibration and noise
- ✓ with low obstacles

## LIV SYSTEMS standard Swivel transport castor with brake + black rubber tyre Ø180 x W50mm for 200kg Prod ID: 34234

ID 34234: Castor overall height 210 mm | 4 mounting holes with distance #\$\$ mm | Wheel with roller bearing and black rubber tyre with hardness 80 ° Shore A | The double brake system, brakes the turning of the wheel and the swivel rotation. | Smooth drive

## Product information

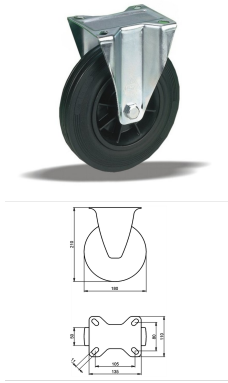
- Article code 2-984 L12
- SKU 34234
- EAN 3838461342349

## Specifications

The result of our quality is maximum performance!

[Close](#)

[Close](#)



## Product description

standard fixed transport castor with an overall height of 210 mm

Wheel diameter x width: 180 x 50 mm

Top plate with 4 mounting holes of 11 mm, mounting hole distance 105x80 mm and top plate outer dimensions: 135x110 mm

Wheel with plain bearing and black rubber tyre with hardness 80 ° Shore A on polypropylene.

### Approved and tested load capacity

Dynamic 200 kg

Static 250 kg

### Temperature range:

Continuous operation: -20 | +70°C

Short (10 min) exposure: -30 | +80°C

### Advantages of this Smooth drive wheel fixed transport castor:

- ✓ wet floor
- ✓ reduces the transmission of both vibration and noise
- ✓ with low obstacles

## LIV SYSTEMS standard fixed transport castor + black rubber tyre Ø180 x W50mm for 200kg Prod ID: 31523

ID 31523: Castor overall height 210 mm | 4 mounting holes with distance 105x80 mm | Wheel with plain bearing and black rubber tyre with hardness 80 ° Shore A | Smooth drive wheel, for wet floor, rubber reduces the transmission of both vibration and noise,

## Product information

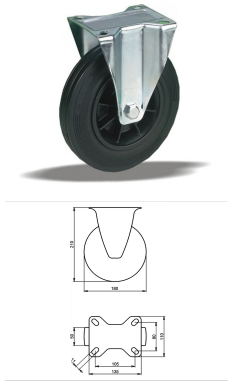
- Article code 2-963 ISO
- SKU 31523
- EAN 3838461315237

## Specifications

The result of our quality is maximum performance!

[Close](#)

[Close](#)



## Product description

standard fixed transport castor with an overall height of 210 mm

Wheel diameter x width: 180 x 50 mm

Top plate with 4 mounting holes of 11 mm, mounting hole distance 105x80 mm and top plate outer dimensions: 135x110 mm

Wheel with roller bearing and black rubber tyre with hardness 80 ° Shore A on polypropylene.

### Approved and tested load capacity

Dynamic 200 kg

Static 250 kg

### Temperature range:

Continuous operation: -20 | +70°C

Short (10 min) exposure: -30 | +80°C

### Advantages of this Smooth drive wheel fixed transport castor:

- ✓ wet floor
- ✓ reduces the transmission of both vibration and noise
- ✓ with low obstacles

## LIV SYSTEMS standard fixed transport castor + black rubber tyre Ø180 x W50mm for 200kg Prod ID: 31515

ID 31515: Castor overall height 210 mm | 4 mounting holes with distance 105x80 mm | Wheel with roller bearing and black rubber tyre with hardness 80 ° Shore A | Smooth drive wheel, for wet floor, rubber reduces the transmission of both vibration and noise

## Product information

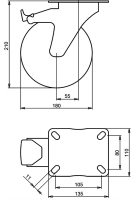
- Article code 2-956 ISO
- SKU 31515
- EAN 3838461315152

## Specifications

The result of our quality is maximum performance!

[Close](#)

[Close](#)



## Product description

standard Swivel transport castor with brake with an overall height of 210 mm

Wheel diameter x width: 180 x 50 mm

Top plate with 4 mounting holes of 11 mm, mounting hole distance 105x80 mm and top plate outer dimensions: 135x110 mm

Wheel with plain bearing and black rubber tyre with hardness 80 ° Shore A on steel rim with electrogalvanization zinc plating anti-corrosion protection Cr6-free the double brake system, brakes the turning of the wheel and the swivel rotation.

### Approved and tested load capacity

Dynamic 200 kg

Static 250 kg

### Temperature range:

Continuous operation: -20 | +70°C

Short (10 min) exposure: -30 | +80°C

### Advantages of this Comfortable drive Swivel transport castor with brake:

- ✓ to manoeuvre
- ✓ performance on uneven floor or obstacles
- ✓ and strong wheel systems

## LIV SYSTEMS standard Swivel transport castor with brake + black rubber tyre Ø180 x W50mm for 200kg Prod ID: 30335

ID 30335: Castor overall height 210 mm | 4 mounting holes with distance 105x80 mm | Wheel with plain bearing and black rubber tyre with hardness 80 ° Shore A | The double brake system, brakes the turning of the wheel and the swivel rotation. | Comfortable

## Product information

- Article code 2-205 A
- SKU 30335
- EAN 3838461303357

## Specifications

The result of our quality is maximum performance!

[Close](#)

[Close](#)



## Product description

standard Swivel transport castor with an overall height of 210 mm

Wheel diameter x width: 180 x 50 mm

Top plate with 4 mounting holes of #\$\$ mm, mounting hole distance #\$\$ mm and top plate outer dimensions: 93 mm

Wheel with plain bearing and black rubber tyre with hardness 80 ° Shore A on steel rim with electrogalvanization zinc plating anti-corrosion protection Cr6-free.

### Approved and tested load capacity

Dynamic 200 kg

Static 250 kg

### Temperature range:

Continuous operation: -20 | +70°C

Short (10 min) exposure: -30 | +80°C


### Advantages of this Comfortable drive Swivel transport castor:

- ✓ to manoeuvre
- ✓ performance on uneven floor or obstacles
- ✓ and strong wheel systems

## LIV SYSTEMS standard Swivel transport castor + black rubber tyre Ø180 x W50mm for 200kg Prod ID: 65148

ID 65148: Castor overall height 210 mm | 4 mounting holes with distance #\$\$ mm | Wheel with plain bearing and black rubber tyre with hardness 80 ° Shore A | Comfortable drive, easy to manoeuvre, good performance on uneven floor or obstacles, robust and st

## Product information

- 
- Article code 2-208
  - SKU 65148
  - EAN 3838461651489



## Product description

standard Swivel transport castor with an overall height of 210 mm

Wheel diameter x width: 180 x 50 mm

Top plate with 4 mounting holes of #\$\$ mm, mounting hole distance #\$\$ mm and top plate outer dimensions: 93 mm

Wheel with roller bearing and black rubber tyre with hardness 80 ° Shore A on steel rim with electrogalvanization zinc plating anti-corrosion protection Cr6-free.

### Approved and tested load capacity

Dynamic 200 kg

Static 250 kg

### Temperature range:

Continuous operation: -20 | +70°C

Short (10 min) exposure: -30 | +80°C


### Advantages of this Comfortable drive Swivel transport castor:

- ✓ to manoeuvre
- ✓ performance on uneven floor or obstacles
- ✓ and strong wheel systems

## LIV SYSTEMS standard Swivel transport castor + black rubber tyre Ø180 x W50mm for 200kg Prod ID: 65146

ID 65146: Castor overall height 210 mm | 4 mounting holes with distance #\$\$ mm | Wheel with roller bearing and black rubber tyre with hardness 80 ° Shore A | Comfortable drive, easy to manoeuvre, good performance on uneven floor or obstacles, robust and s

## Product information

- 
- Article code 2-206
  - SKU 65146
  - EAN 3838461651465





## Product description

standard Swivel transport castor with brake with an overall height of 210 mm

Wheel diameter x width: 180 x 50 mm

Top plate with 4 mounting holes of #\$\$ mm, mounting hole distance #\$\$ mm and top plate outer dimensions: 93 mm

Wheel with plain bearing and black rubber tyre with hardness 80 ° Shore A on steel rim with electrogalvanization zinc plating anti-corrosion protection Cr6-free

the double brake system, brakes the turning of the wheel and the swivel rotation.

### Approved and tested load capacity

Dynamic 200 kg

Static 250 kg

### Temperature range:

Continuous operation: -20 | +70°C

Short (10 min) exposure: -30 | +80°C

### Advantages of this Comfortable drive Swivel transport castor with brake:

- ✓ to manoeuvre
- ✓ performance on uneven floor or obstacles
- ✓ and strong wheel systems

## LIV SYSTEMS standard Swivel transport castor with brake + black rubber tyre Ø180 x W50mm for 200kg Prod ID: 30415

ID 30415: Castor overall height 210 mm | 4 mounting holes with distance #\$\$ mm | Wheel with plain bearing and black rubber tyre with hardness 80 ° Shore A | The double brake system, brakes the turning of the wheel and the swivel rotation. | Comfortable dr

## Product information



- Article code 2-209 A
- SKU 30415
- EAN 3838461304156



## Product description

standard Swivel transport castor with brake with an overall height of 210 mm

Wheel diameter x width: 180 x 50 mm

Top plate with 4 mounting holes of #5 mm, mounting hole distance #50 mm and top plate outer dimensions: 93 mm

Wheel with roller bearing and black rubber tyre with hardness 80 ° Shore A on steel rim with electrogalvanization zinc plating anti-corrosion protection Cr6-free

the double brake system, brakes the turning of the wheel and the swivel rotation.

### Approved and tested load capacity

Dynamic 200 kg

Static 250 kg

### Temperature range:

Continuous operation: -20 | +70°C

Short (10 min) exposure: -30 | +80°C

### Advantages of this Comfortable drive Swivel transport castor with brake:

- ✓ to manoeuvre
- ✓ performance on uneven floor or obstacles
- ✓ and strong wheel systems

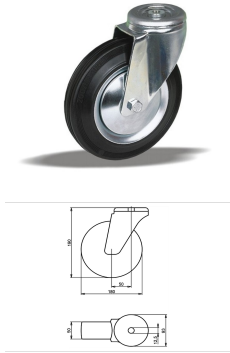
## LIV SYSTEMS standard Swivel transport castor with brake + black rubber tyre Ø180 x W50mm for 200kg Prod ID: 30414

ID 30414: Castor overall height 210 mm | 4 mounting holes with distance #50 mm | Wheel with roller bearing and black rubber tyre with hardness 80 ° Shore A | The double brake system, brakes the turning of the wheel and the swivel rotation. | Comfortable d

## Product information



- Article code 2-207 A
- SKU 30414
- EAN 3838461304149



## Product description

standard Swivel transport castor with an overall height of 210 mm

Wheel diameter x width: 180 x 50 mm

Top plate with 4 mounting holes of 12,5 mm, mounting hole distance #\$\$ mm and top plate outer dimensions: 93 mm

Wheel with plain bearing and black rubber tyre with hardness 80 ° Shore A on steel rim with electrogalvanization zinc plating anti-corrosion protection Cr6-free.

### Approved and tested load capacity

Dynamic 200 kg

Static 250 kg

### Temperature range:

Continuous operation: -20 | +70°C

Short (10 min) exposure: -30 | +80°C

### Advantages of this Comfortable drive Swivel transport castor:

- ✓ to manoeuvre
- ✓ performance on uneven floor or obstacles
- ✓ and strong wheel systems

## LIV SYSTEMS standard Swivel transport castor + black rubber tyre Ø180 x W50mm for 200kg Prod ID: 34044

ID 34044: Castor overall height 210 mm | 4 mounting holes with distance #\$\$ mm | Wheel with plain bearing and black rubber tyre with hardness 80 ° Shore A | Comfortable drive, easy to manoeuvre, good performance on uneven floor or obstacles, robust and st

## Product information

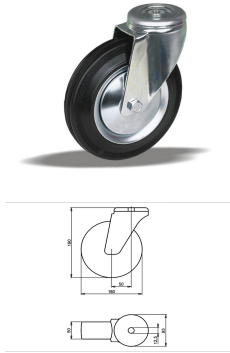
- Article code 2-208 L12
- SKU 34044
- EAN 3838461340444

## Specifications

The result of our quality is maximum performance!

[Close](#)

[Close](#)



## Product description

standard Swivel transport castor with an overall height of 190 mm

Wheel diameter x width: 180 x 50 mm

Top plate with 4 mounting holes of 12,5 mm, mounting hole distance #\$\$ mm and top plate outer dimensions: 93 mm

Wheel with roller bearing and black rubber tyre with hardness 80 ° Shore A on steel rim with electrogalvanization zinc plating anti-corrosion protection Cr6-free.

### Approved and tested load capacity

Dynamic 180 kg

Static 220 kg

### Temperature range:

Continous operation: -20 | +70°C

Short (10 min) exposure: -30 | +80°C

### Advantages of this Comfortable drive Swivel transport castor:

- ✓ to manoeuvre
- ✓ performance on uneven floor or obstacles
- ✓ and strong wheel systems

## LIV SYSTEMS standard Swivel transport castor + black rubber tyre Ø180 x W50mm for 180kg Prod ID: 34043

ID 34043: Castor overall height 190 mm | 4 mounting holes with distance #\$\$ mm | Wheel with roller bearing and black rubber tyre with hardness 80 ° Shore A | Comfortable drive, easy to manoeuvre, good performance on uneven floor or obstacles, robust and s

## Product information

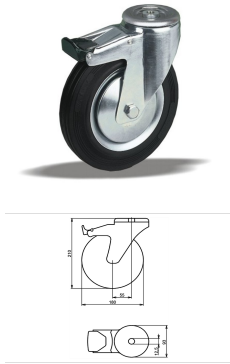
- Article code 2-206 L12
- SKU 34043
- EAN 3838461340437

## Specifications

The result of our quality is maximum performance!

[Close](#)

[Close](#)



## Product description

standard Swivel transport castor with brake with an overall height of 210 mm

Wheel diameter x width: 180 x 50 mm

Top plate with 4 mounting holes of 12,5 mm, mounting hole distance #\$\$ mm and top plate outer dimensions: 93 mm

Wheel with plain bearing and black rubber tyre with hardness 80 ° Shore A on steel rim with electrogalvanization zinc plating anti-corrosion protection Cr6-free the double brake system, brakes the turning of the wheel and the swivel rotation.

### Approved and tested load capacity

Dynamic 200 kg

Static 250 kg

### Temperature range:

Continious operation: -20 | +70°C

Short (10 min) exposure: -30 | +80°C

### Advantages of this Comfortable drive Swivel transport castor with brake:

- ✓ to manoeuvre
- ✓ performance on uneven floor or obstacles
- ✓ and strong wheel systems

## LIV SYSTEMS standard Swivel transport castor with brake + black rubber tyre Ø180 x W50mm for 200kg Prod ID: 34103

ID 34103: Castor overall height 210 mm | 4 mounting holes with distance #\$\$ mm | Wheel with plain bearing and black rubber tyre with hardness 80 ° Shore A | The double brake system, brakes the turning of the wheel and the swivel rotation. | Comfortable dr

## Product information

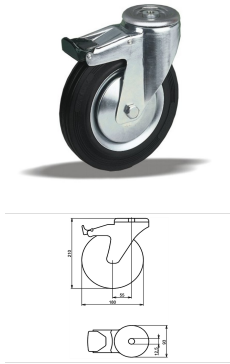
- Article code 2-209 L12
- SKU 34103
- EAN 3838461341038

## Specifications

The result of our quality is maximum performance!

[Close](#)

[Close](#)



## Product description

standard Swivel transport castor with brake with an overall height of 210 mm

Wheel diameter x width: 180 x 50 mm

Top plate with 4 mounting holes of 12,5 mm, mounting hole distance #\$\$ mm and top plate outer dimensions: 93 mm

Wheel with roller bearing and black rubber tyre with hardness 80 ° Shore A on steel rim with electrogalvanization zinc plating anti-corrosion protection Cr6-free the double brake system, brakes the turning of the wheel and the swivel rotation.

### Approved and tested load capacity

Dynamic 200 kg

Static 250 kg

### Temperature range:

Continious operation: -20 | +70°C

Short (10 min) exposure: -30 | +80°C

### Advantages of this Comfortable drive Swivel transport castor with brake:

- ✓ to manoeuvre
- ✓ performance on uneven floor or obstacles
- ✓ and strong wheel systems

## LIV SYSTEMS standard Swivel transport castor with brake + black rubber tyre Ø180 x W50mm for 200kg Prod ID: 34095

ID 34095: Castor overall height 210 mm | 4 mounting holes with distance #\$\$ mm | Wheel with roller bearing and black rubber tyre with hardness 80 ° Shore A | The double brake system, brakes the turning of the wheel and the swivel rotation. | Comfortable d

## Product information

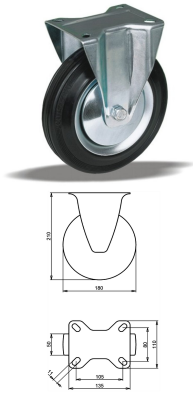
- Article code 2-207 L12
- SKU 34095
- EAN 3838461340956

## Specifications

The result of our quality is maximum performance!

[Close](#)

[Close](#)



## Product description

standard fixed transport castor with an overall height of 210 mm

Wheel diameter x width: 180 x 50 mm

Top plate with 4 mounting holes of 11 mm, mounting hole distance 105x80 mm and top plate outer dimensions: 135x110 mm

Wheel with plain bearing and black rubber tyre with hardness 80 ° Shore A on steel rim with electrogalvanization zinc plating anti-corrosion protection Cr6-free.

### Approved and tested load capacity

Dynamic 200 kg

Static 250 kg

### Temperature range:

Continuous operation: -20 | +70°C

Short (10 min) exposure: -30 | +80°C

### Advantages of this Comfortable drive fixed transport castor:

- ✓ to manoeuvre
- ✓ performance on uneven floor or obstacles
- ✓ and strong wheel systems

## LIV SYSTEMS standard fixed transport castor + black rubber tyre Ø180 x W50mm for 200kg Prod ID: 68978

ID 68978: Castor overall height 210 mm | 4 mounting holes with distance 105x80 mm | Wheel with plain bearing and black rubber tyre with hardness 80 ° Shore A | Comfortable drive, easy to manoeuvre, good performance on uneven floor or obstacles, robust and

## Product information

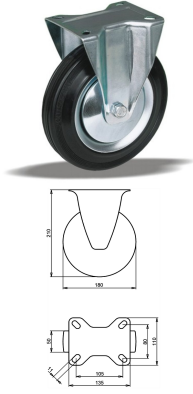
- Article code 2-210 ISO
- SKU 68978
- EAN 3838461689789

## Specifications

The result of our quality is maximum performance!

[Close](#)

[Close](#)



## Product description

standard fixed transport castor with an overall height of 210 mm

Wheel diameter x width: 180 x 50 mm

Top plate with 4 mounting holes of 11 mm, mounting hole distance 105x80 mm and top plate outer dimensions: 135x110 mm

Wheel with roller bearing and black rubber tyre with hardness 80 ° Shore A on steel rim with electrogalvanization zinc plating anti-corrosion protection Cr6-free.

### Approved and tested load capacity

Dynamic 200 kg

Static 250 kg

### Temperature range:

Continuous operation: -20 | +70°C

Short (10 min) exposure: -30 | +80°C

### Advantages of this Comfortable drive fixed transport castor:

- ✓ to manoeuvre
- ✓ performance on uneven floor or obstacles
- ✓ and strong wheel systems

## LIV SYSTEMS standard fixed transport castor + black rubber tyre Ø180 x W50mm for 200kg Prod ID: 55720

ID 55720: Castor overall height 210 mm | 4 mounting holes with distance 105x80 mm | Wheel with roller bearing and black rubber tyre with hardness 80 ° Shore A | Comfortable drive, easy to manoeuvre, good performance on uneven floor or obstacles, robust an

## Product information

- Article code 2-178 ISO
- SKU 55720
- EAN 3838461557200

## Specifications

The result of our quality is maximum performance!

**Алматы** (7273)495-231  
**Ангарск** (3955)60-70-56  
**Архангельск** (8182)63-90-72  
**Астрахань** (8512)99-46-04  
**Барнаул** (3852)73-04-60  
**Белгород** (4722)40-23-64  
**Благовещенск** (4162)22-76-07  
**Брянск** (4832)59-03-52  
**Владивосток** (423)249-28-31  
**Владикавказ** (8672)28-90-48  
**Владимир** (4922)49-43-18  
**Волгоград** (844)278-03-48  
**Вологда** (8172)26-41-59  
**Воронеж** (473)204-51-73  
**Екатеринбург** (343)384-55-89

**Иваново** (4932)77-34-06  
**Ижевск** (3412)26-03-58  
**Иркутск** (395)279-98-46  
**Казань** (843)206-01-48  
**Калининград** (4012)72-03-81  
**Калуга** (4842)92-23-67  
**Кемерово** (3842)65-04-62  
**Киров** (8332)68-02-04  
**Коломна** (4966)23-41-49  
**Кострома** (4942)77-07-48  
**Краснодар** (861)203-40-90  
**Красноярск** (391)204-63-61  
**Курск** (4712)77-13-04  
**Курган** (3522)50-90-47  
**Липецк** (4742)52-20-81

**Магнитогорск** (3519)55-03-13  
**Москва** (495)268-04-70  
**Мурманск** (8152)59-64-93  
**Набережные Челны** (8552)20-53-41  
**Нижний Новгород** (831)429-08-12  
**Новокузнецк** (3843)20-46-81  
**Ноябрьск** (3496)41-32-12  
**Новосибирск** (383)227-86-73  
**Омск** (3812)21-46-40  
**Орел** (4862)44-53-42  
**Оренбург** (3532)37-68-04  
**Пенза** (8412)22-31-16  
**Петрозаводск** (8142)55-98-37  
**Псков** (8112)59-10-37  
**Пермь** (342)205-81-47

**Ростов-на-Дону** (863)308-18-15  
**Рязань** (4912)46-61-64  
**Самара** (846)206-03-16  
**Санкт-Петербург** (812)309-46-40  
**Саратов** (845)249-38-78  
**Севастополь** (8692)22-31-93  
**Саранск** (8342)22-96-24  
**Симферополь** (3652)67-13-56  
**Смоленск** (4812)29-41-54  
**Сочи** (862)225-72-31  
**Ставрополь** (8652)20-65-13  
**Сургут** (3462)77-98-35  
**Сыктывкар** (8212)25-95-17  
**Тамбов** (4752)50-40-97  
**Тверь** (4822)63-31-35

**Тольятти** (8482)63-91-07  
**Томск** (3822)98-41-53  
**Тула** (4872)33-79-87  
**Тюмень** (3452)66-21-18  
**Ульяновск** (8422)24-23-59  
**Улан-Удэ** (3012)59-97-51  
**Уфа** (347)229-48-12  
**Хабаровск** (4212)92-98-04  
**Чебоксары** (8352)28-53-07  
**Челябинск** (351)202-03-61  
**Череповец** (8202)49-02-64  
**Чита** (3022)38-34-83  
**Якутск** (4112)23-90-97  
**Ярославль** (4852)69-52-93

**Россия** +7(495)268-04-70

**Казахстан** +7(7172)727-132

**Киргизия** +996(312)96-26-47

<https://liv.nt-rt.ru/> || [vis@nt-rt.ru](mailto:vis@nt-rt.ru)