

Алматы (7273)495-231
Ангарск (3955)60-70-56
Архангельск (8182)63-90-72
Астрахань (8512)99-46-04
Барнаул (3852)73-04-60
Белгород (4722)40-23-64
Благовещенск (4162)22-76-07
Брянск (4832)59-03-52
Владивосток (423)249-28-31
Владикавказ (8672)28-90-48
Владимир (4922)49-43-18
Волгоград (844)278-03-48
Вологда (8172)26-41-59
Воронеж (473)204-51-73
Екатеринбург (343)384-55-89

Иваново (4932)77-34-06
Ижевск (3412)26-03-58
Иркутск (395)279-98-46
Казань (843)206-01-48
Калининград (4012)72-03-81
Калуга (4842)92-23-67
Кемерово (3842)65-04-62
Киров (8332)68-02-04
Коломна (4966)23-41-49
Кострома (4942)77-07-48
Краснодар (861)203-40-90
Красноярск (391)204-63-61
Курск (4712)77-13-04
Курган (3522)50-90-47
Липецк (4742)52-20-81

Магнитогорск (3519)55-03-13
Москва (495)268-04-70
Мурманск (8152)59-64-93
Набережные Челны (8552)20-53-41
Нижний Новгород (831)429-08-12
Новокузнецк (3843)20-46-81
Ноябрьск (3496)41-32-12
Новосибирск (383)227-86-73
Омск (3812)21-46-40
Орел (4862)44-53-42
Оренбург (3532)37-68-04
Пенза (8412)22-31-16
Петрозаводск (8142)55-98-37
Псков (8112)59-10-37
Пермь (342)205-81-47

Ростов-на-Дону (863)308-18-15
Рязань (4912)46-61-64
Самара (846)206-03-16
Санкт-Петербург (812)309-46-40
Саратов (845)249-38-78
Севастополь (8692)22-31-93
Саранск (8342)22-96-24
Симферополь (3652)67-13-56
Смоленск (4812)29-41-54
Сочи (862)225-72-31
Ставрополь (8652)20-65-13
Сургут (3462)77-98-35
Сыктывкар (8212)25-95-17
Тамбов (4752)50-40-97
Тверь (4822)63-31-35

Тольятти (8482)63-91-07
Томск (3822)98-41-53
Тула (4872)33-79-87
Тюмень (3452)66-21-18
Ульяновск (8422)24-23-59
Улан-Удэ (3012)59-97-51
Уфа (347)229-48-12
Хабаровск (4212)92-98-04
Чебоксары (8352)28-53-07
Челябинск (351)202-03-61
Череповец (8202)49-02-64
Чита (3022)38-34-83
Якутск (4112)23-90-97
Ярославль (4852)69-52-93

Россия +7(495)268-04-70

Казахстан +7(7172)727-132

Киргизия +996(312)96-26-47

<https://liv.nt-rt.ru/> || vis@nt-rt.ru



Product description

standard Wheel with roller bearing and black rubber tyre with hardness 80 ° Shore A on steel rim with electrogalvanization zinc plating anti-corrosion protection Cr6-free

Wheel diameter x width: 200 x 50 mm

Axle hole: 20 mm

Hub length: 58 mm

Approved and tested load capacity

Dynamic 230 kg

Static 280 kg

Temperature range:

Continuous operation: -20 | +70°C

Short (10 min) exposure: -30 | +80°C

Advantages of this Comfortable drive wheel:

- ✓ to manoeuvre
- ✓ performance on uneven floor or obstacles
- ✓ and strong wheel systems

LIV SYSTEMS standard transport wheel + black rubber tyre Ø200 x W50mm for 230kg Prod ID: 59314

ID 59314: standard Wheel with roller bearing and black rubber tyre with hardness 80 ° Shore A on steel rim with electrogalvanization zinc plating anti-corrosion protection Cr6-free | Axle hole: 20 mm | Hub length: 58 mm | Comfortable drive, easy to manoeuvre

Product information

- Article code 2-172 ISO
- SKU 59314
- EAN 3838461593147



Product description

standard Wheel with ball bearing and black rubber tyre with hardness 80 ° Shore A on steel rim with electrogalvanization zinc plating anti-corrosion protection Cr6-free

Wheel diameter x width: 200 x 50 mm

Axle hole: 15 mm

Hub length: 54 mm

Approved and tested load capacity

Dynamic 230 kg

Static 280 kg

Temperature range:

Continous operation: -20 | +70°C

Short (10 min) exposure: -30 | +80°C

Advantages of this Comfortable drive wheel:

- ✓ to manoeuvre
- ✓ performance on uneven floor or obstacles
- ✓ and strong wheel systems

LIV SYSTEMS standard transport wheel + black rubber tyre Ø200 x W50mm for 230kg Prod ID: 33494

ID 33494: standard Wheel with ball bearing and black rubber tyre with hardness 80 ° Shore A on steel rim with electrogalvanization zinc plating anti-corrosion protection Cr6-free | Axle hole: 15 mm | Hub length: 54 mm | Comfortable drive, easy to manoeuvre

Product information

- Article code 2-106 ISO
- SKU 33494
- EAN 3838461334948



Product description

standard Wheel with plain bearing and grey rubber tyre with hardness 83 ° Shore A on polypropylene

Wheel diameter x width: 200 x 50 mm

Axle hole: 20 mm

Hub length: 58 mm

Approved and tested load capacity

Dynamic 230 kg

Static 280 kg

Temperature range:

Continuous operation: -20 | +70°C

Short (10 min) exposure: -30 | +80°C

Advantages of this Elegant trip wheel:

- ✓ rubber is non-marking and leaves no marks on the floor
- ✓ reduces the transmission of both vibration and noise
- ✓ and outdoor use

LIV SYSTEMS standard wheel + grey rubber tyre Ø200 x W50mm for 230kg

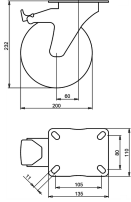
Prod ID: 39383

ID 39383: standard Wheel with plain bearing and grey rubber tyre with hardness 83 ° Shore A on polypropylene | Axle hole: 20 mm | Hub length: 58 mm | Elegant trip, Grey rubber is non-marking and leaves no marks on the floor, rubber reduces the transmission

Product information

- Article code 2-948 ISO
- SKU 39383
- EAN 3838461393839

Specifications



Product description

standard Swivel transport castor with brake with an overall height of 232 mm

Wheel diameter x width: 200 x 50 mm

Top plate with 4 mounting holes of 11 mm, mounting hole distance 105x80 mm and top plate outer dimensions: 135x110 mm

Wheel with roller bearing and black rubber tyre with hardness 80 ° Shore A on steel rim with electrogalvanization zinc plating anti-corrosion protection Cr6-free the double brake system, brakes the turning of the wheel and the swivel rotation.

Approved and tested load capacity

Dynamic 230 kg

Static 280 kg

Temperature range:

Continuous operation: -20 | +70°C

Short (10 min) exposure: -30 | +80°C

Advantages of this Comfortable drive Swivel transport castor with brake:

- ✓ to manoeuvre
- ✓ performance on uneven floor or obstacles
- ✓ and strong wheel systems

LIV SYSTEMS standard Swivel transport castor with brake + black rubber tyre Ø200 x W50mm for 230kg Prod ID: 30343

ID 30343: Castor overall height 232 mm | 4 mounting holes with distance 105x80 mm | Wheel with roller bearing and black rubber tyre with hardness 80 ° Shore A | The double brake system, brakes the turning of the wheel and the swivel rotation. | Comfortabl

Product information

- Article code 2-170 A
- SKU 30343
- EAN 3838461303432

Specifications

The result of our quality is maximum performance!

[Close](#)

[Close](#)



Product description

standard Swivel transport castor with an overall height of 232 mm

Wheel diameter x width: 200 x 50 mm

Top plate with 4 mounting holes of #5 mm, mounting hole distance #50 mm and top plate outer dimensions: 93 mm

Wheel with roller bearing and black rubber tyre with hardness 80 ° Shore A on polypropylene.

Approved and tested load capacity

Dynamic 230 kg

Static 280 kg

Temperature range:

Continuous operation: -20 | +70°C

Short (10 min) exposure: -30 | +80°C

Advantages of this Smooth drive wheel Swivel transport castor:

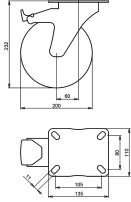
- ✓ wet floor
- ✓ reduces the transmission of both vibration and noise
- ✓ with low obstacles

LIV SYSTEMS standard Swivel transport castor + black rubber tyre Ø200 x W50mm for 230kg Prod ID: 31325

ID 31325: Castor overall height 232 mm | 4 mounting holes with distance #50 mm | Wheel with roller bearing and black rubber tyre with hardness 80 ° Shore A | Smooth drive wheel, for wet floor, rubber reduces the transmission of both vibration and noise, p

Product information

- Article code 2-971 ISO
- SKU 31325
- EAN 3838461313257



Product description

standard Swivel transport castor with brake with an overall height of 232 mm

Wheel diameter x width: 200 x 50 mm

Top plate with 4 mounting holes of 11 mm, mounting hole distance 105x80 mm and top plate outer dimensions: 135x110 mm

Wheel with plain bearing and black rubber tyre with hardness 80 ° Shore A on steel rim with electrogalvanization zinc plating anti-corrosion protection Cr6-free the double brake system, brakes the turning of the wheel and the swivel rotation.

Approved and tested load capacity

Dynamic 230 kg

Static 280 kg

Temperature range:

Continuous operation: -20 | +70°C

Short (10 min) exposure: -30 | +80°C

Advantages of this Comfortable drive Swivel transport castor with brake:

- ✓ to manoeuvre
- ✓ performance on uneven floor or obstacles
- ✓ and strong wheel systems

LIV SYSTEMS standard Swivel transport castor with brake + black rubber tyre Ø200 x W50mm for 230kg Prod ID: 30345

ID 30345: Castor overall height 232 mm | 4 mounting holes with distance 105x80 mm | Wheel with plain bearing and black rubber tyre with hardness 80 ° Shore A | The double brake system, brakes the turning of the wheel and the swivel rotation. | Comfortable

Product information

- Article code 2-625 A
- SKU 30345
- EAN 3838461303456

Specifications

The result of our quality is maximum performance!

[Close](#)

[Close](#)



Product description

standard Wheel with roller bearing and grey rubber tyre with hardness 83 ° Shore A on polypropylene

Wheel diameter x width: 200 x 50 mm

Axle hole: 20 mm

Hub length: 58 mm

Approved and tested load capacity

Dynamic 230 kg

Static 280 kg

Temperature range:

Continuous operation: -20 | +70°C

Short (10 min) exposure: -30 | +80°C

Advantages of this Elegant trip wheel:

- ✓ rubber is non-marking and leaves no marks on the floor
- ✓ reduces the transmission of both vibration and noise
- ✓ and outdoor use

LIV SYSTEMS standard wheel + grey rubber tyre Ø200 x W50mm for 230kg

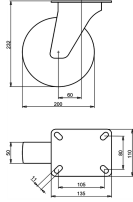
Prod ID: 35463

ID 35463: standard Wheel with roller bearing and grey rubber tyre with hardness 83 ° Shore A on polypropylene | Axle hole: 20 mm | Hub length: 58 mm | Elegant trip, Grey rubber is non-marking and leaves no marks on the floor, rubber reduces the transmissio

Product information

- Article code 2-948 A
- SKU 35463
- EAN 3838461354632

Specifications



Product description

standard Swivel castor with an overall height of 232 mm

Wheel diameter x width: 200 x 50 mm

Top plate with 4 mounting holes of 11 mm, mounting hole distance 105x80 mm and top plate outer dimensions: 135x110 mm

Wheel with plain bearing and grey rubber tyre with hardness 83 ° Shore A on polypropylene.

Approved and tested load capacity

Dynamic 230 kg

Static 280 kg

Temperature range:

Continuous operation: -20 | +70°C

Short (10 min) exposure: -30 | +80°C

Advantages of this Elegant trip Swivel castor:

- ✓ rubber is non-marking and leaves no marks on the floor
- ✓ reduces the transmission of both vibration and noise
- ✓ and outdoor use

LIV SYSTEMS standard Swivel castor + grey rubber tyre Ø200 x W50mm for 230kg Prod ID: 39414

ID 39414: Castor overall height 232 mm | 4 mounting holes with distance 105x80 mm | Wheel with plain bearing and grey rubber tyre with hardness 83 ° Shore A | Elegant trip, Grey rubber is non-marking and leaves no marks on the floor, rubber reduces the tr

Product information

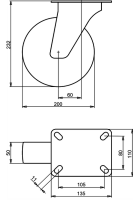
- Article code 2-927 ISO
- SKU 39414
- EAN 3838461394140

Specifications

The result of our quality is maximum performance!

[Close](#)

[Close](#)



Product description

standard Swivel castor with an overall height of 232 mm

Wheel diameter x width: 200 x 50 mm

Top plate with 4 mounting holes of 11 mm, mounting hole distance 105x80 mm and top plate outer dimensions: 135x110 mm

Wheel with roller bearing and grey rubber tyre with hardness 83 ° Shore A on polypropylene.

Approved and tested load capacity

Dynamic 230 kg

Static 280 kg

Temperature range:

Continuous operation: -20 | +70°C

Short (10 min) exposure: -30 | +80°C

Advantages of this Elegant trip Swivel castor:

- ✓ rubber is non-marking and leaves no marks on the floor
- ✓ reduces the transmission of both vibration and noise
- ✓ and outdoor use

LIV SYSTEMS standard Swivel castor + grey rubber tyre Ø200 x W50mm for 230kg Prod ID: 39413

ID 39413: Castor overall height 232 mm | 4 mounting holes with distance 105x80 mm | Wheel with roller bearing and grey rubber tyre with hardness 83 ° Shore A | Elegant trip, Grey rubber is non-marking and leaves no marks on the floor, rubber reduces the t

Product information

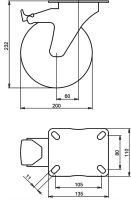
- Article code 2-920 ISO
- SKU 39413
- EAN 3838461394133

Specifications

The result of our quality is maximum performance!

[Close](#)

[Close](#)



Product description

standard Swivel castor with brake with an overall height of 232 mm

Wheel diameter x width: 200 x 50 mm

Top plate with 4 mounting holes of 11 mm, mounting hole distance 105x110 mm and top plate outer dimensions: 135x110 mm

Wheel with plain bearing and grey rubber tyre with hardness 83 ° Shore A on polypropylene

the double brake system, brakes the turning of the wheel and the swivel rotation.

Approved and tested load capacity

Dynamic 230 kg

Static 280 kg

Temperature range:

Continuous operation: -20 | +70°C

Short (10 min) exposure: -30 | +80°C

Advantages of this Elegant trip Swivel castor with brake:

- ✓ rubber is non-marking and leaves no marks on the floor
- ✓ reduces the transmission of both vibration and noise
- ✓ and outdoor use

LIV SYSTEMS standard Swivel castor with brake + grey rubber tyre Ø200 x W50mm for 230kg Prod ID: 39453

ID 39453: Castor overall height 232 mm | 4 mounting holes with distance 105x110 mm | Wheel with plain bearing and grey rubber tyre with hardness 83 ° Shore A | The double brake system, brakes the turning of the wheel and the swivel rotation. | Elegant tri

Product information

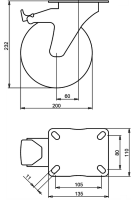
- Article code 2-941 ISO
- SKU 39453
- EAN 3838461394539

Specifications

The result of our quality is maximum performance!

[Close](#)

[Close](#)



Product description

standard Swivel castor with brake with an overall height of 232 mm

Wheel diameter x width: 200 x 50 mm

Top plate with 4 mounting holes of 11 mm, mounting hole distance 105x110 mm and top plate outer dimensions: 135x110 mm

Wheel with roller bearing and grey rubber tyre with hardness 83 ° Shore A on polypropylene

the double brake system, brakes the turning of the wheel and the swivel rotation.

Approved and tested load capacity

Dynamic 230 kg

Static 280 kg

Temperature range:

Continuous operation: -20 | +70°C

Short (10 min) exposure: -30 | +80°C

Advantages of this Elegant trip Swivel castor with brake:

- ✓ rubber is non-marking and leaves no marks on the floor
- ✓ reduces the transmission of both vibration and noise
- ✓ and outdoor use

LIV SYSTEMS standard Swivel castor with brake + grey rubber tyre Ø200 x W50mm for 230kg Prod ID: 35453

ID 35453: Castor overall height 232 mm | 4 mounting holes with distance 105x110 mm | Wheel with roller bearing and grey rubber tyre with hardness 83 ° Shore A | The double brake system, brakes the turning of the wheel and the swivel rotation. | Elegant tr

Product information

- Article code 2-934 ISO
- SKU 35453
- EAN 3838461354533

Specifications

The result of our quality is maximum performance!

[Close](#)

[Close](#)



Product description

standard Swivel castor with an overall height of 232 mm

Wheel diameter x width: 200 x 50 mm

Top plate with 4 mounting holes of #\$\$ mm, mounting hole distance #\$\$ mm and top plate outer dimensions: 93 mm

Wheel with roller bearing and grey rubber tyre with hardness 83 ° Shore A on polypropylene.

Approved and tested load capacity

Dynamic 230 kg

Static 280 kg

Temperature range:

Continuous operation: -20 | +70°C

Short (10 min) exposure: -30 | +80°C

Advantages of this Elegant trip Swivel castor:

- ✓ rubber is non-marking and leaves no marks on the floor
- ✓ reduces the transmission of both vibration and noise
- ✓ and outdoor use

LIV SYSTEMS standard Swivel castor + grey rubber tyre Ø200 x W50mm for 230kg Prod ID: 39494

ID 39494: Castor overall height 232 mm | 4 mounting holes with distance #\$\$ mm | Wheel with roller bearing and grey rubber tyre with hardness 83 ° Shore A | Elegant trip, Grey rubber is non-marking and leaves no marks on the floor, rubber reduces the tran

Product information

- Article code 2-971 ISO
- SKU 39494
- EAN 3838461394942



Product description

standard Swivel castor with brake with an overall height of 232 mm

Wheel diameter x width: 200 x 50 mm

Top plate with 4 mounting holes of 40 mm, mounting hole distance 100 mm and top plate outer dimensions: 93 mm

Wheel with plain bearing and grey rubber tyre with hardness 83 ° Shore A on polypropylene the double brake system, brakes the turning of the wheel and the swivel rotation.

Approved and tested load capacity

Dynamic 230 kg

Static 280 kg

Temperature range:

Continuous operation: -20 | +70°C

Short (10 min) exposure: -30 | +80°C

Advantages of this Elegant trip Swivel castor with brake:

- ✓ rubber is non-marking and leaves no marks on the floor
- ✓ reduces the transmission of both vibration and noise
- ✓ and outdoor use

LIV SYSTEMS standard Swivel castor with brake + grey rubber tyre Ø200 x W50mm for 230kg Prod ID: 39544

ID 39544: Castor overall height 232 mm | 4 mounting holes with distance 100 mm | Wheel with plain bearing and grey rubber tyre with hardness 83 ° Shore A | The double brake system, brakes the turning of the wheel and the swivel rotation. | Elegant trip, G

Product information

- 
- Article code 2-992 ISO
 - SKU 39544
 - EAN 3838461395444



Product description

standard Swivel castor with brake with an overall height of 232 mm

Wheel diameter x width: 200 x 50 mm

Top plate with 4 mounting holes of 40 mm, mounting hole distance 100 mm and top plate outer dimensions: 93 mm

Wheel with roller bearing and grey rubber tyre with hardness 83 ° Shore A on polypropylene the double brake system, brakes the turning of the wheel and the swivel rotation.

Approved and tested load capacity

Dynamic 230 kg

Static 280 kg

Temperature range:

Continuous operation: -20 | +70°C

Short (10 min) exposure: -30 | +80°C


Advantages of this Elegant trip Swivel castor with brake:

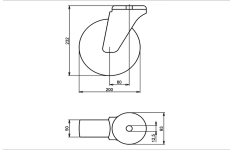
- ✓ rubber is non-marking and leaves no marks on the floor
- ✓ reduces the transmission of both vibration and noise
- ✓ and outdoor use

LIV SYSTEMS standard Swivel castor with brake + grey rubber tyre Ø200 x W50mm for 230kg Prod ID: 39543

ID 39543: Castor overall height 232 mm | 4 mounting holes with distance 100 mm | Wheel with roller bearing and grey rubber tyre with hardness 83 ° Shore A | The double brake system, brakes the turning of the wheel and the swivel rotation. | Elegant trip,

Product information

- 
- Article code 2-985 ISI
 - SKU 39543
 - EAN 3838461395437



Product description

standard Swivel castor with an overall height of 232 mm

Wheel diameter x width: 200 x 50 mm

Top plate with 4 mounting holes of 12,5 mm, mounting hole distance #\$\$ mm and top plate outer dimensions: 93 mm

Wheel with plain bearing and grey rubber tyre with hardness 83 ° Shore A on polypropylene.

Approved and tested load capacity

Dynamic 230 kg

Static 280 kg

Temperature range:

Continious operation: -20 | +70°C

Short (10 min) exposure: -30 | +80°C

Advantages of this Elegant trip Swivel castor:

- ✓ rubber is non-marking and leaves no marks on the floor
- ✓ reduces the transmission of both vibration and noise
- ✓ and outdoor use

LIV SYSTEMS standard Swivel castor + grey rubber tyre Ø200 x W50mm for 230kg Prod ID: 39583

ID 39583: Castor overall height 232 mm | 4 mounting holes with distance #\$\$ mm | Wheel with plain bearing and grey rubber tyre with hardness 83 ° Shore A | Elegant trip, Grey rubber is non-marking and leaves no marks on the floor, rubber reduces the trans

Product information

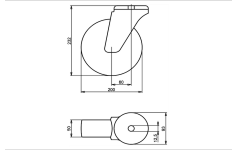
- Article code 2-978 L12
- SKU 39583
- EAN 3838461395833

Specifications

The result of our quality is maximum performance!

[Close](#)

[Close](#)



Product description

standard Swivel castor with an overall height of 232 mm

Wheel diameter x width: 200 x 50 mm

Top plate with 4 mounting holes of 12,5 mm, mounting hole distance #\$\$ mm and top plate outer dimensions: 93 mm

Wheel with roller bearing and grey rubber tyre with hardness 83 ° Shore A on polypropylene.

Approved and tested load capacity

Dynamic 230 kg

Static 280 kg

Temperature range:

Continous operation: -20 | +70°C

Short (10 min) exposure: -30 | +80°C

Advantages of this Elegant trip Swivel castor:

- ✓ rubber is non-marking and leaves no marks on the floor
- ✓ reduces the transmission of both vibration and noise
- ✓ and outdoor use

LIV SYSTEMS standard Swivel castor + grey rubber tyre Ø200 x W50mm for 230kg Prod ID: 39575

ID 39575: Castor overall height 232 mm | 4 mounting holes with distance #\$\$ mm | Wheel with roller bearing and grey rubber tyre with hardness 83 ° Shore A | Elegant trip, Grey rubber is non-marking and leaves no marks on the floor, rubber reduces the tran

Product information

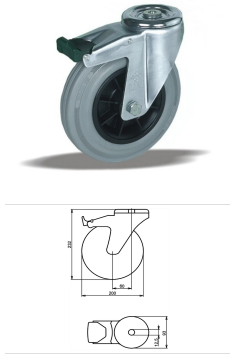
- Article code 2-971 L12
- SKU 39575
- EAN 3838461395758

Specifications

The result of our quality is maximum performance!

[Close](#)

[Close](#)



Product description

standard Swivel castor with brake with an overall height of 232 mm
Wheel diameter x width: 200 x 50 mm
Top plate with 4 mounting holes of 12,5 mm, mounting hole distance #\$\$ mm and top plate outer dimensions: 93 mm
Wheel with plain bearing and grey rubber tyre with hardness 83 ° Shore A on polypropylene
the double brake system, brakes the turning of the wheel and the swivel rotation.

Approved and tested load capacity

Dynamic 230 kg
Static 280 kg

Temperature range:

Continuous operation: -20 | +70°C
Short (10 min) exposure: -30 | +80°C

Advantages of this Elegant trip Swivel castor with brake:

- ✓ rubber is non-marking and leaves no marks on the floor
- ✓ reduces the transmission of both vibration and noise
- ✓ and outdoor use

LIV SYSTEMS standard Swivel castor with brake + grey rubber tyre Ø200 x W50mm for 230kg Prod ID: 39625

ID 39625: Castor overall height 232 mm | 4 mounting holes with distance #\$\$ mm | Wheel with plain bearing and grey rubber tyre with hardness 83 ° Shore A | The double brake system, brakes the turning of the wheel and the swivel rotation. | Elegant trip, G

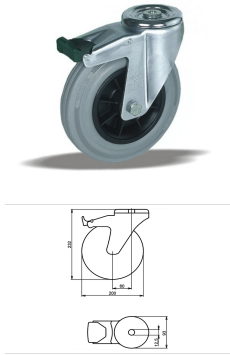
Product information

- Article code 2-992 L12
- SKU 39625
- EAN 3838461396250

Specifications

The result of our quality is maximum performance!

[Close](#)
[Close](#)



Product description

standard Swivel castor with brake with an overall height of 232 mm
 Wheel diameter x width: 200 x 50 mm
 Top plate with 4 mounting holes of 12,5 mm, mounting hole distance #\$\$ mm and top plate outer dimensions: 93 mm
 Wheel with roller bearing and grey rubber tyre with hardness 83 ° Shore A on polypropylene
 the double brake system, brakes the turning of the wheel and the swivel rotation.

Approved and tested load capacity

Dynamic 230 kg
 Static 280 kg

Temperature range:

Continuous operation: -20 | +70°C
 Short (10 min) exposure: -30 | +80°C

Advantages of this Elegant trip Swivel castor with brake:

- ✓ rubber is non-marking and leaves no marks on the floor
- ✓ reduces the transmission of both vibration and noise
- ✓ and outdoor use

LIV SYSTEMS standard Swivel castor with brake + grey rubber tyre Ø200 x W50mm for 230kg Prod ID: 39624

ID 39624: Castor overall height 232 mm | 4 mounting holes with distance #\$\$ mm | Wheel with roller bearing and grey rubber tyre with hardness 83 ° Shore A | The double brake system, brakes the turning of the wheel and the swivel rotation. | Elegant trip,

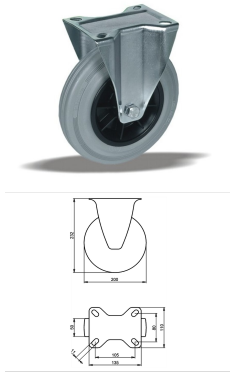
Product information

- Article code 2-985 L12
- SKU 39624
- EAN 3838461396243

Specifications

The result of our quality is maximum performance!

[Close](#)
[Close](#)



Product description

standard Fixed castor with an overall height of 232 mm

Wheel diameter x width: 200 x 50 mm

Top plate with 4 mounting holes of 11 mm, mounting hole distance 105x80 mm and top plate outer dimensions: 135x110 mm

Wheel with plain bearing and grey rubber tyre with hardness 83 ° Shore A on polypropylene.

Approved and tested load capacity

Dynamic 230 kg

Static 280 kg

Temperature range:

Continuous operation: -20 | +70°C

Short (10 min) exposure: -30 | +80°C

Advantages of this Elegant trip Fixed castor:

- ✓ rubber is non-marking and leaves no marks on the floor
- ✓ reduces the transmission of both vibration and noise
- ✓ and outdoor use

LIV SYSTEMS standard Fixed castor + grey rubber tyre Ø200 x W50mm for 230kg Prod ID: 39663

ID 39663: Castor overall height 232 mm | 4 mounting holes with distance 105x80 mm | Wheel with plain bearing and grey rubber tyre with hardness 83 ° Shore A | Elegant trip, Grey rubber is non-marking and leaves no marks on the floor, rubber reduces the tr

Product information

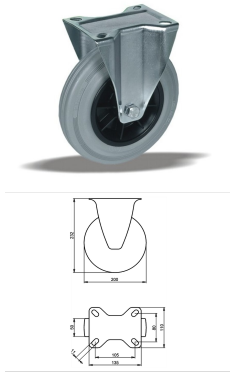
- Article code 2-964 ISO
- SKU 39663
- EAN 3838461396632

Specifications

The result of our quality is maximum performance!

[Close](#)

[Close](#)



Product description

standard Fixed castor with an overall height of 232 mm

Wheel diameter x width: 200 x 50 mm

Top plate with 4 mounting holes of 11 mm, mounting hole distance 105x80 mm and top plate outer dimensions: 135x110 mm

Wheel with roller bearing and grey rubber tyre with hardness 83 ° Shore A on polypropylene.

Approved and tested load capacity

Dynamic 230 kg

Static 280 kg

Temperature range:

Continuous operation: -20 | +70°C

Short (10 min) exposure: -30 | +80°C

Advantages of this Elegant trip Fixed castor:

- ✓ rubber is non-marking and leaves no marks on the floor
- ✓ reduces the transmission of both vibration and noise
- ✓ and outdoor use

LIV SYSTEMS standard Fixed castor + grey rubber tyre Ø200 x W50mm for 230kg Prod ID: 35455

ID 35455: Castor overall height 232 mm | 4 mounting holes with distance 105x80 mm | Wheel with roller bearing and grey rubber tyre with hardness 83 ° Shore A | Elegant trip, Grey rubber is non-marking and leaves no marks on the floor, rubber reduces the t

Product information

- Article code 2-957 ISO
- SKU 35455
- EAN 3838461354557

Specifications

The result of our quality is maximum performance!

[Close](#)

[Close](#)



Product description

standard Wheel with plain bearing and black rubber tyre with hardness 80 ° Shore A on polypropylene

Wheel diameter x width: 200 x 50 mm

Axle hole: 20 mm

Hub length: 58 mm

Approved and tested load capacity

Dynamic 230 kg

Static 280 kg

Temperature range:

Continuous operation: -20 | +70°C

Short (10 min) exposure: -30 | +80°C

Advantages of this Smooth drive wheel wheel:

- ✓ wet floor
- ✓ reduces the transmission of both vibration and noise
- ✓ with low obstacles

LIV SYSTEMS standard transport wheel + black rubber tyre Ø200 x W50mm for 230kg Prod ID: 91054

ID 91054: standard Wheel with plain bearing and black rubber tyre with hardness 80 ° Shore A on polypropylene | Axle hole: 20 mm | Hub length: 58 mm | Smooth drive wheel, for wet floor, rubber reduces the transmission of both vibration and noise, perfect w

Product information

- Article code 2-948 ISO
- SKU 91054
- EAN 3838461910548



Product description

standard Wheel with roller bearing and black rubber tyre with hardness 80 ° Shore A on polypropylene

Wheel diameter x width: 200 x 50 mm

Axle hole: 20 mm

Hub length: 58 mm

Approved and tested load capacity

Dynamic 230 kg

Static 280 kg

Temperature range:

Continuous operation: -20 | +70°C

Short (10 min) exposure: -30 | +80°C

Advantages of this Smooth drive wheel wheel:

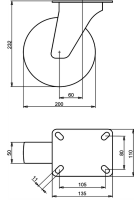
- ✓ wet floor
- ✓ reduces the transmission of both vibration and noise
- ✓ with low obstacles

LIV SYSTEMS standard transport wheel + black rubber tyre Ø200 x W50mm for 230kg Prod ID: 30273

ID 30273: standard Wheel with roller bearing and black rubber tyre with hardness 80 ° Shore A on polypropylene | Axle hole: 20 mm | Hub length: 58 mm | Smooth drive wheel, for wet floor, rubber reduces the transmission of both vibration and noise, perfect

Product information

- Article code 2-948 A
- SKU 30273
- EAN 3838461302732



Product description

standard Swivel transport castor with an overall height of 232 mm

Wheel diameter x width: 200 x 50 mm

Top plate with 4 mounting holes of 11 mm, mounting hole distance 105x80 mm and top plate outer dimensions: 135x110 mm

Wheel with plain bearing and black rubber tyre with hardness 80 ° Shore A on polypropylene.

Approved and tested load capacity

Dynamic 230 kg

Static 280 kg

Temperature range:

Continuous operation: -20 | +70°C

Short (10 min) exposure: -30 | +80°C

Advantages of this Smooth drive wheel Swivel transport castor:

- ✓ wet floor
- ✓ reduces the transmission of both vibration and noise
- ✓ with low obstacles

LIV SYSTEMS standard Swivel transport castor + black rubber tyre Ø200 x W50mm for 230kg Prod ID: 64069

ID 64069: Castor overall height 232 mm | 4 mounting holes with distance 105x80 mm | Wheel with plain bearing and black rubber tyre with hardness 80 ° Shore A | Smooth drive wheel, for wet floor, rubber reduces the transmission of both vibration and noise,

Product information

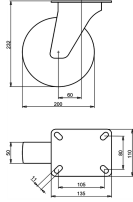
- Article code 2-927 ISO
- SKU 64069
- EAN 3838461640698

Specifications

The result of our quality is maximum performance!

[Close](#)

[Close](#)



Product description

standard Swivel transport castor with an overall height of 232 mm

Wheel diameter x width: 200 x 50 mm

Top plate with 4 mounting holes of 11 mm, mounting hole distance 105x80 mm and top plate outer dimensions: 135x110 mm

Wheel with roller bearing and black rubber tyre with hardness 80 ° Shore A on polypropylene.

Approved and tested load capacity

Dynamic 230 kg

Static 280 kg

Temperature range:

Continuous operation: -20 | +70°C

Short (10 min) exposure: -30 | +80°C

Advantages of this Smooth drive wheel Swivel transport castor:

- ✓ wet floor
- ✓ reduces the transmission of both vibration and noise
- ✓ with low obstacles

LIV SYSTEMS standard Swivel transport castor + black rubber tyre Ø200 x W50mm for 230kg Prod ID: 31165

ID 31165: Castor overall height 232 mm | 4 mounting holes with distance 105x80 mm | Wheel with roller bearing and black rubber tyre with hardness 80 ° Shore A | Smooth drive wheel, for wet floor, rubber reduces the transmission of both vibration and noise

Product information

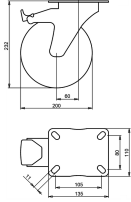
- Article code 2-920 ISO
- SKU 31165
- EAN 3838461311659

Specifications

The result of our quality is maximum performance!

[Close](#)

[Close](#)



Product description

standard Swivel transport castor with brake with an overall height of 232 mm

Wheel diameter x width: 200 x 50 mm

Top plate with 4 mounting holes of 11 mm, mounting hole distance 105x80 mm and top plate outer dimensions: 135x110 mm

Wheel with plain bearing and black rubber tyre with hardness 80 ° Shore A on polypropylene

the double brake system, brakes the turning of the wheel and the swivel rotation.

Approved and tested load capacity

Dynamic 230 kg

Static 280 kg

Temperature range:

Continuous operation: -20 | +70°C

Short (10 min) exposure: -30 | +80°C

Advantages of this Smooth drive wheel Swivel transport castor with brake:

- ✓ wet floor
- ✓ reduces the transmission of both vibration and noise
- ✓ with low obstacles

LIV SYSTEMS standard Swivel transport castor with brake + black rubber tyre Ø200 x W50mm for 230kg Prod ID: 31234

ID 31234: Castor overall height 232 mm | 4 mounting holes with distance 105x80 mm | Wheel with plain bearing and black rubber tyre with hardness 80 ° Shore A | The double brake system, brakes the turning of the wheel and the swivel rotation. | Smooth driv

Product information

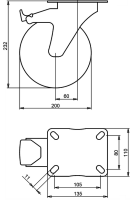
- Article code 2-941 ISO
- SKU 31234
- EAN 3838461312342

Specifications

The result of our quality is maximum performance!

[Close](#)

[Close](#)



Product description

standard Swivel transport castor with brake with an overall height of 232 mm

Wheel diameter x width: 200 x 50 mm

Top plate with 4 mounting holes of 11 mm, mounting hole distance 105x80 mm and top plate outer dimensions: 135x110 mm

Wheel with roller bearing and black rubber tyre with hardness 80 ° Shore A on polypropylene

the double brake system, brakes the turning of the wheel and the swivel rotation.

Approved and tested load capacity

Dynamic 230 kg

Static 280 kg

Temperature range:

Continuous operation: -20 | +70°C

Short (10 min) exposure: -30 | +80°C

Advantages of this Smooth drive wheel Swivel transport castor with brake:

- ✓ wet floor
- ✓ reduces the transmission of both vibration and noise
- ✓ with low obstacles

LIV SYSTEMS standard Swivel transport castor with brake + black rubber tyre Ø200 x W50mm for 230kg Prod ID: 31233

ID 31233: Castor overall height 232 mm | 4 mounting holes with distance 105x80 mm | Wheel with roller bearing and black rubber tyre with hardness 80 ° Shore A | The double brake system, brakes the turning of the wheel and the swivel rotation. | Smooth dri

Product information

- Article code 2-934 ISO
- SKU 31233
- EAN 3838461312335

Specifications

The result of our quality is maximum performance!

[Close](#)

[Close](#)



Product description

standard Swivel transport castor with an overall height of 232 mm

Wheel diameter x width: 200 x 50 mm

Top plate with 4 mounting holes of #5 mm, mounting hole distance #50 mm and top plate outer dimensions: 93 mm

Wheel with plain bearing and black rubber tyre with hardness 80 ° Shore A on polypropylene.

Approved and tested load capacity

Dynamic 230 kg

Static 280 kg

Temperature range:

Continuous operation: -20 | +70°C

Short (10 min) exposure: -30 | +80°C

Advantages of this Smooth drive wheel Swivel transport castor:

- ✓ wet floor
- ✓ reduces the transmission of both vibration and noise
- ✓ with low obstacles

LIV SYSTEMS standard Swivel transport castor + black rubber tyre Ø200 x W50mm for 230kg Prod ID: 31333

ID 31333: Castor overall height 232 mm | 4 mounting holes with distance #50 mm | Wheel with plain bearing and black rubber tyre with hardness 80 ° Shore A | Smooth drive wheel, for wet floor, rubber reduces the transmission of both vibration and noise, pe

Product information

- Article code 2-978 ISO
- SKU 31333
- EAN 3838461313332



Product description

standard Swivel transport castor with brake with an overall height of 232 mm

Wheel diameter x width: 200 x 50 mm

Top plate with 4 mounting holes of #\$\$% mm, mounting hole distance #\$\$% mm and top plate outer dimensions: 93 mm

Wheel with plain bearing and black rubber tyre with hardness 80 ° Shore A on polypropylene the double brake system, brakes the turning of the wheel and the swivel rotation.

Approved and tested load capacity

Dynamic 230 kg

Static 280 kg

Temperature range:

Continuous operation: -20 | +70°C

Short (10 min) exposure: -30 | +80°C


Advantages of this Smooth drive wheel Swivel transport castor with brake:

- ✓ wet floor
- ✓ reduces the transmission of both vibration and noise
- ✓ with low obstacles

LIV SYSTEMS standard Swivel transport castor with brake + black rubber tyre Ø200 x W50mm for 230kg Prod ID: 31454

ID 31454: Castor overall height 232 mm | 4 mounting holes with distance #\$\$% mm | Wheel with plain bearing and black rubber tyre with hardness 80 ° Shore A | The double brake system, brakes the turning of the wheel and the swivel rotation. | Smooth drive w

Product information

- 
- Article code 2-992 ISO
 - SKU 31454
 - EAN 3838461314544



Product description

standard Swivel transport castor with brake with an overall height of 232 mm

Wheel diameter x width: 200 x 50 mm

Top plate with 4 mounting holes of #\$\$ mm, mounting hole distance #\$\$ mm and top plate outer dimensions: 93 mm

Wheel with roller bearing and black rubber tyre with hardness 80 ° Shore A on polypropylene the double brake system, brakes the turning of the wheel and the swivel rotation.

Approved and tested load capacity

Dynamic 230 kg

Static 280 kg

Temperature range:

Continuous operation: -20 | +70°C

Short (10 min) exposure: -30 | +80°C


Advantages of this Smooth drive wheel Swivel transport castor with brake:

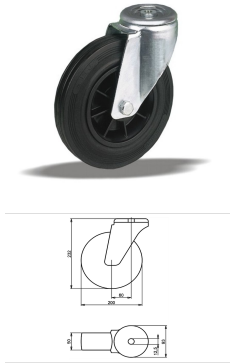
- ✓ wet floor
- ✓ reduces the transmission of both vibration and noise
- ✓ with low obstacles

LIV SYSTEMS standard Swivel transport castor with brake + black rubber tyre Ø200 x W50mm for 230kg Prod ID: 31453

ID 31453: Castor overall height 232 mm | 4 mounting holes with distance #\$\$ mm | Wheel with roller bearing and black rubber tyre with hardness 80 ° Shore A | The double brake system, brakes the turning of the wheel and the swivel rotation. | Smooth drive

Product information

- 
- Article code 2-985 ISO
 - SKU 31453
 - EAN 3838461314537



Product description

standard Swivel transport castor with an overall height of 232 mm

Wheel diameter x width: 200 x 50 mm

Top plate with 4 mounting holes of 12,5 mm, mounting hole distance #\$\$ mm and top plate outer dimensions: 93 mm

Wheel with plain bearing and black rubber tyre with hardness 80 ° Shore A on polypropylene.

Approved and tested load capacity

Dynamic 230 kg

Static 280 kg

Temperature range:

Continuous operation: -20 | +70°C

Short (10 min) exposure: -30 | +80°C

Advantages of this Smooth drive wheel Swivel transport castor:

- ✓ wet floor
- ✓ reduces the transmission of both vibration and noise
- ✓ with low obstacles

LIV SYSTEMS standard Swivel transport castor + black rubber tyre Ø200 x W50mm for 230kg Prod ID: 34193

ID 34193: Castor overall height 232 mm | 4 mounting holes with distance #\$\$ mm | Wheel with plain bearing and black rubber tyre with hardness 80 ° Shore A | Smooth drive wheel, for wet floor, rubber reduces the transmission of both vibration and noise, pe

Product information

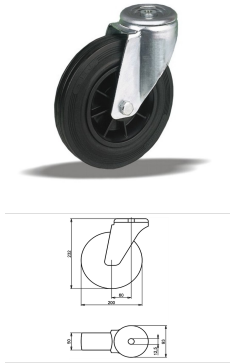
- Article code 2-978 L12
- SKU 34193
- EAN 3838461341939

Specifications

The result of our quality is maximum performance!

[Close](#)

[Close](#)



Product description

standard Swivel transport castor with an overall height of 232 mm

Wheel diameter x width: 200 x 50 mm

Top plate with 4 mounting holes of 12,5 mm, mounting hole distance #\$\$ mm and top plate outer dimensions: 93 mm

Wheel with roller bearing and black rubber tyre with hardness 80 ° Shore A on polypropylene.

Approved and tested load capacity

Dynamic 230 kg

Static 280 kg

Temperature range:

Continuous operation: -20 | +70°C

Short (10 min) exposure: -30 | +80°C

Advantages of this Smooth drive wheel Swivel transport castor:

- ✓ wet floor
- ✓ reduces the transmission of both vibration and noise
- ✓ with low obstacles

LIV SYSTEMS standard Swivel transport castor + black rubber tyre Ø200 x W50mm for 230kg Prod ID: 34185

ID 34185: Castor overall height 232 mm | 4 mounting holes with distance #\$\$ mm | Wheel with roller bearing and black rubber tyre with hardness 80 ° Shore A | Smooth drive wheel, for wet floor, rubber reduces the transmission of both vibration and noise, p

Product information

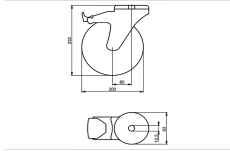
- Article code 2-971 L12
- SKU 34185
- EAN 3838461341854

Specifications

The result of our quality is maximum performance!

[Close](#)

[Close](#)



Product description

standard Swivel transport castor with brake with an overall height of 232 mm

Wheel diameter x width: 200 x 50 mm

Top plate with 4 mounting holes of 12,5 mm, mounting hole distance #\$\$ mm and top plate outer dimensions: 93 mm

Wheel with plain bearing and black rubber tyre with hardness 80 ° Shore A on polypropylene

the double brake system, brakes the turning of the wheel and the swivel rotation.

Approved and tested load capacity

Dynamic 230 kg

Static 280 kg

Temperature range:

Continious operation: -20 | +70°C

Short (10 min) exposure: -30 | +80°C

Advantages of this Smooth drive wheel Swivel transport castor with brake:

- ✓ wet floor
- ✓ reduces the transmission of both vibration and noise
- ✓ with low obstacles

LIV SYSTEMS standard Swivel transport castor with brake + black rubber tyre Ø200 x W50mm for 230kg Prod ID: 34245

ID 34245: Castor overall height 232 mm | 4 mounting holes with distance #\$\$ mm | Wheel with plain bearing and black rubber tyre with hardness 80 ° Shore A | The double brake system, brakes the turning of the wheel and the swivel rotation. | Smooth drive w

Product information

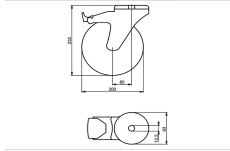
- Article code 2-992 L12
- SKU 34245
- EAN 3838461342455

Specifications

The result of our quality is maximum performance!

[Close](#)

[Close](#)



Product description

standard Swivel transport castor with brake with an overall height of 232 mm
 Wheel diameter x width: 200 x 50 mm
 Top plate with 4 mounting holes of 12,5 mm, mounting hole distance #\$\$ mm and top plate outer dimensions: 93 mm
 Wheel with roller bearing and black rubber tyre with hardness 80 ° Shore A on polypropylene
 the double brake system, brakes the turning of the wheel and the swivel rotation.

Approved and tested load capacity

Dynamic 230 kg
 Static 280 kg

Temperature range:

Continious operation: -20 | +70°C
 Short (10 min) exposure: -30 | +80°C

Advantages of this Smooth drive wheel Swivel transport castor with brake:

- ✓ wet floor
- ✓ reduces the transmission of both vibration and noise
- ✓ with low obstacles

LIV SYSTEMS standard Swivel transport castor with brake + black rubber tyre Ø200 x W50mm for 230kg Prod ID: 34244

ID 34244: Castor overall height 232 mm | 4 mounting holes with distance #\$\$ mm | Wheel with roller bearing and black rubber tyre with hardness 80 ° Shore A | The double brake system, brakes the turning of the wheel and the swivel rotation. | Smooth drive

Product information

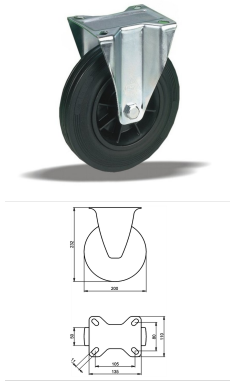
- Article code 2-985 L12
- SKU 34244
- EAN 3838461342448

Specifications

The result of our quality is maximum performance!

[Close](#)

[Close](#)



Product description

standard fixed transport castor with an overall height of 232 mm

Wheel diameter x width: 200 x 50 mm

Top plate with 4 mounting holes of 11 mm, mounting hole distance 105x80 mm and top plate outer dimensions: 135x110 mm

Wheel with plain bearing and black rubber tyre with hardness 80 ° Shore A on polypropylene.

Approved and tested load capacity

Dynamic 230 kg

Static 280 kg

Temperature range:

Continuous operation: -20 | +70°C

Short (10 min) exposure: -30 | +80°C

Advantages of this Smooth drive wheel fixed transport castor:

- ✓ wet floor
- ✓ reduces the transmission of both vibration and noise
- ✓ with low obstacles

LIV SYSTEMS standard fixed transport castor + black rubber tyre Ø200 x W50mm for 230kg Prod ID: 64070

ID 64070: Castor overall height 232 mm | 4 mounting holes with distance 105x80 mm | Wheel with plain bearing and black rubber tyre with hardness 80 ° Shore A | Smooth drive wheel, for wet floor, rubber reduces the transmission of both vibration and noise,

Product information

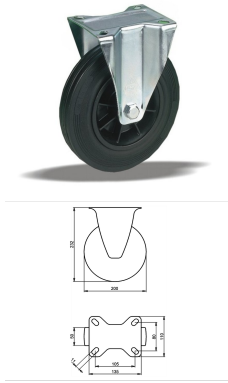
- Article code 2-964 ISO
- SKU 64070
- EAN 3838461640704

Specifications

The result of our quality is maximum performance!

[Close](#)

[Close](#)



Product description

standard fixed transport castor with an overall height of 232 mm

Wheel diameter x width: 200 x 50 mm

Top plate with 4 mounting holes of 11 mm, mounting hole distance 105x80 mm and top plate outer dimensions: 135x110 mm

Wheel with roller bearing and black rubber tyre with hardness 80 ° Shore A on polypropylene.

Approved and tested load capacity

Dynamic 230 kg

Static 280 kg

Temperature range:

Continuous operation: -20 | +70°C

Short (10 min) exposure: -30 | +80°C

Advantages of this Smooth drive wheel fixed transport castor:

- ✓ wet floor
- ✓ reduces the transmission of both vibration and noise
- ✓ with low obstacles

LIV SYSTEMS standard fixed transport castor + black rubber tyre Ø200 x W50mm for 230kg Prod ID: 31524

ID 31524: Castor overall height 232 mm | 4 mounting holes with distance 105x80 mm | Wheel with roller bearing and black rubber tyre with hardness 80 ° Shore A | Smooth drive wheel, for wet floor, rubber reduces the transmission of both vibration and noise

Product information

- Article code 2-957 ISO
- SKU 31524
- EAN 3838461315244

Specifications

The result of our quality is maximum performance!

[Close](#)

[Close](#)



Product description

standard Wheel with plain bearing and black rubber tyre with hardness 80 ° Shore A on steel rim with electrogalvanization zinc plating anti-corrosion protection Cr6-free

Wheel diameter x width: 200 x 50 mm

Axle hole: 20 mm

Hub length: 58 mm

Approved and tested load capacity

Dynamic 230 kg

Static 280 kg

Temperature range:

Continuous operation: -20 | +70°C

Short (10 min) exposure: -30 | +80°C

Advantages of this Comfortable drive wheel:

- ✓ to manoeuvre
- ✓ performance on uneven floor or obstacles
- ✓ and strong wheel systems

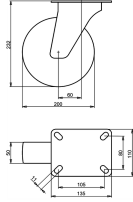
LIV SYSTEMS standard transport wheel + black rubber tyre Ø200 x W50mm for 230kg Prod ID: 61824

ID 61824: standard Wheel with plain bearing and black rubber tyre with hardness 80 ° Shore A on steel rim with electrogalvanization zinc plating anti-corrosion protection Cr6-free | Axle hole: 20 mm | Hub length: 58 mm |

Comfortable drive, easy to manoeuvre

Product information

- Article code 2-228 ISO
- SKU 61824
- EAN 3838461618246



Product description

standard Swivel transport castor with an overall height of 232 mm

Wheel diameter x width: 200 x 50 mm

Top plate with 4 mounting holes of 11 mm, mounting hole distance 105x80 mm and top plate outer dimensions: 135x110 mm

Wheel with plain bearing and black rubber tyre with hardness 80 ° Shore A on steel rim with electrogalvanization zinc plating anti-corrosion protection Cr6-free.

Approved and tested load capacity

Dynamic 230 kg

Static 280 kg

Temperature range:

Continuous operation: -20 | +70°C

Short (10 min) exposure: -30 | +80°C

Advantages of this Comfortable drive Swivel transport castor:

- ✓ to manoeuvre
- ✓ performance on uneven floor or obstacles
- ✓ and strong wheel systems

LIV SYSTEMS standard Swivel transport castor + black rubber tyre Ø200 x W50mm for 230kg Prod ID: 62393

ID 62393: Castor overall height 232 mm | 4 mounting holes with distance 105x80 mm | Wheel with plain bearing and black rubber tyre with hardness 80 ° Shore A | Comfortable drive, easy to manoeuvre, good performance on uneven floor or obstacles, robust and

Product information

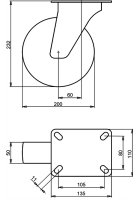
- Article code 2-240 ISO
- SKU 62393
- EAN 3838461623936

Specifications

The result of our quality is maximum performance!

[Close](#)

[Close](#)



Product description

standard Swivel transport castor with an overall height of 232 mm

Wheel diameter x width: 200 x 50 mm

Top plate with 4 mounting holes of 11 mm, mounting hole distance 105x80 mm and top plate outer dimensions: 135x110 mm

Wheel with roller bearing and black rubber tyre with hardness 80 ° Shore A on steel rim with electrogalvanization zinc plating anti-corrosion protection Cr6-free.

Approved and tested load capacity

Dynamic 230 kg

Static 280 kg

Temperature range:

Continuous operation: -20 | +70°C

Short (10 min) exposure: -30 | +80°C

Advantages of this Comfortable drive Swivel transport castor:

- ✓ to manoeuvre
- ✓ performance on uneven floor or obstacles
- ✓ and strong wheel systems

LIV SYSTEMS standard Swivel transport castor + black rubber tyre Ø200 x W50mm for 230kg Prod ID: 56996

ID 56996: Castor overall height 232 mm | 4 mounting holes with distance 105x80 mm | Wheel with roller bearing and black rubber tyre with hardness 80 ° Shore A | Comfortable drive, easy to manoeuvre, good performance on uneven floor or obstacles, robust an

Product information

- Article code 2-242 ISO
- SKU 56996
- EAN 3838461569968

Specifications

The result of our quality is maximum performance!

[Close](#)

[Close](#)



Product description

standard Swivel transport castor with an overall height of 232 mm

Wheel diameter x width: 200 x 50 mm

Top plate with 4 mounting holes of #\$\$ mm, mounting hole distance #\$\$ mm and top plate outer dimensions: 93 mm

Wheel with plain bearing and black rubber tyre with hardness 80 ° Shore A on steel rim with electrogalvanization zinc plating anti-corrosion protection Cr6-free.

Approved and tested load capacity

Dynamic 230 kg

Static 280 kg

Temperature range:

Continuous operation: -20 | +70°C

Short (10 min) exposure: -30 | +80°C


Advantages of this Comfortable drive Swivel transport castor:

- ✓ to manoeuvre
- ✓ performance on uneven floor or obstacles
- ✓ and strong wheel systems

LIV SYSTEMS standard Swivel transport castor + black rubber tyre Ø200 x W50mm for 230kg Prod ID: 65152

ID 65152: Castor overall height 232 mm | 4 mounting holes with distance #\$\$ mm | Wheel with plain bearing and black rubber tyre with hardness 80 ° Shore A | Comfortable drive, easy to manoeuvre, good performance on uneven floor or obstacles, robust and st

Product information

- 
- Article code 2-599
 - SKU 65152
 - EAN 3838461651526



Product description

standard Swivel transport castor with an overall height of 232 mm

Wheel diameter x width: 200 x 50 mm

Top plate with 4 mounting holes of 40 mm, mounting hole distance 80 mm and top plate outer dimensions: 93 mm

Wheel with roller bearing and black rubber tyre with hardness 80 ° Shore A on steel rim with electrogalvanization zinc plating anti-corrosion protection Cr6-free.

Approved and tested load capacity

Dynamic 230 kg

Static 280 kg

Temperature range:

Continuous operation: -20 | +70°C

Short (10 min) exposure: -30 | +80°C


Advantages of this Comfortable drive Swivel transport castor:

- ✓ to manoeuvre
- ✓ performance on uneven floor or obstacles
- ✓ and strong wheel systems

LIV SYSTEMS standard Swivel transport castor + black rubber tyre Ø200 x W50mm for 230kg Prod ID: 65150

ID 65150: Castor overall height 232 mm | 4 mounting holes with distance 80 mm | Wheel with roller bearing and black rubber tyre with hardness 80 ° Shore A | Comfortable drive, easy to manoeuvre, good performance on uneven floor or obstacles, robust and s

Product information

- 
- Article code 2-632
 - SKU 65150
 - EAN 3838461651502



Product description

standard Swivel transport castor with brake with an overall height of 232 mm

Wheel diameter x width: 200 x 50 mm

Top plate with 4 mounting holes of #5 mm, mounting hole distance #50 mm and top plate outer dimensions: 93 mm

Wheel with plain bearing and black rubber tyre with hardness 80 ° Shore A on steel rim with electrogalvanization zinc plating anti-corrosion protection Cr6-free

the double brake system, brakes the turning of the wheel and the swivel rotation.

Approved and tested load capacity

Dynamic 230 kg

Static 280 kg

Temperature range:

Continuous operation: -20 | +70°C

Short (10 min) exposure: -30 | +80°C

Advantages of this Comfortable drive Swivel transport castor with brake:

- ✓ to manoeuvre
- ✓ performance on uneven floor or obstacles
- ✓ and strong wheel systems

LIV SYSTEMS standard Swivel transport castor with brake + black rubber tyre Ø200 x W50mm for 230kg Prod ID: 30425

ID 30425: Castor overall height 232 mm | 4 mounting holes with distance #50 mm | Wheel with plain bearing and black rubber tyre with hardness 80 ° Shore A | The double brake system, brakes the turning of the wheel and the swivel rotation. | Comfortable dr

Product information



- Article code 2-598 A
- SKU 30425
- EAN 3838461304255



Product description

standard Swivel transport castor with brake with an overall height of 232 mm

Wheel diameter x width: 200 x 50 mm

Top plate with 4 mounting holes of #5 mm, mounting hole distance #50 mm and top plate outer dimensions: 93 mm

Wheel with roller bearing and black rubber tyre with hardness 80 ° Shore A on steel rim with electrogalvanization zinc plating anti-corrosion protection Cr6-free

the double brake system, brakes the turning of the wheel and the swivel rotation.

Approved and tested load capacity

Dynamic 230 kg

Static 280 kg

Temperature range:

Continuous operation: -20 | +70°C

Short (10 min) exposure: -30 | +80°C

Advantages of this Comfortable drive Swivel transport castor with brake:

- ✓ to manoeuvre
- ✓ performance on uneven floor or obstacles
- ✓ and strong wheel systems

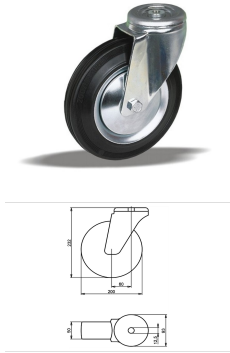
LIV SYSTEMS standard Swivel transport castor with brake + black rubber tyre Ø200 x W50mm for 230kg Prod ID: 30424

ID 30424: Castor overall height 232 mm | 4 mounting holes with distance #50 mm | Wheel with roller bearing and black rubber tyre with hardness 80 ° Shore A | The double brake system, brakes the turning of the wheel and the swivel rotation. | Comfortable d

Product information



- Article code 2-610 A
- SKU 30424
- EAN 3838461304248



Product description

standard Swivel transport castor with an overall height of 232 mm

Wheel diameter x width: 200 x 50 mm

Top plate with 4 mounting holes of 12,5 mm, mounting hole distance #\$\$ mm and top plate outer dimensions: 93 mm

Wheel with plain bearing and black rubber tyre with hardness 80 ° Shore A on steel rim with electrogalvanization zinc plating anti-corrosion protection Cr6-free.

Approved and tested load capacity

Dynamic 230 kg

Static 280 kg

Temperature range:

Continous operation: -20 | +70°C

Short (10 min) exposure: -30 | +80°C

Advantages of this Comfortable drive Swivel transport castor:

- ✓ to manoeuvre
- ✓ performance on uneven floor or obstacles
- ✓ and strong wheel systems

LIV SYSTEMS standard Swivel transport castor + black rubber tyre Ø200 x W50mm for 230kg Prod ID: 34055

ID 34055: Castor overall height 232 mm | 4 mounting holes with distance #\$\$ mm | Wheel with plain bearing and black rubber tyre with hardness 80 ° Shore A | Comfortable drive, easy to manoeuvre, good performance on uneven floor or obstacles, robust and st

Product information

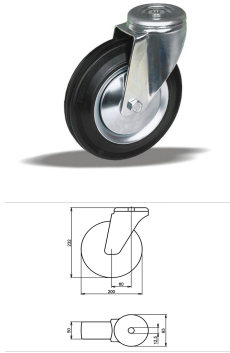
- Article code 2-599 L12
- SKU 34055
- EAN 3838461340550

Specifications

The result of our quality is maximum performance!

[Close](#)

[Close](#)



Product description

standard Swivel transport castor with an overall height of 232 mm

Wheel diameter x width: 200 x 50 mm

Top plate with 4 mounting holes of 12,5 mm, mounting hole distance #\$\$ mm and top plate outer dimensions: 93 mm

Wheel with roller bearing and black rubber tyre with hardness 80 ° Shore A on steel rim with electrogalvanization zinc plating anti-corrosion protection Cr6-free.

Approved and tested load capacity

Dynamic 230 kg

Static 280 kg

Temperature range:

Continuous operation: -20 | +70°C

Short (10 min) exposure: -30 | +80°C

Advantages of this Comfortable drive Swivel transport castor:

- ✓ to manoeuvre
- ✓ performance on uneven floor or obstacles
- ✓ and strong wheel systems

LIV SYSTEMS standard Swivel transport castor + black rubber tyre Ø200 x W50mm for 230kg Prod ID: 34045

ID 34045: Castor overall height 232 mm | 4 mounting holes with distance #\$\$ mm | Wheel with roller bearing and black rubber tyre with hardness 80 ° Shore A | Comfortable drive, easy to manoeuvre, good performance on uneven floor or obstacles, robust and s

Product information

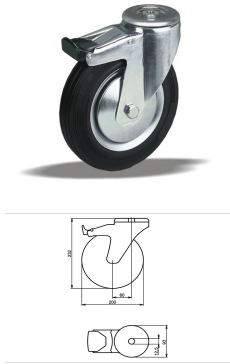
- Article code 2-632 L12
- SKU 34045
- EAN 3838461340451

Specifications

The result of our quality is maximum performance!

[Close](#)

[Close](#)



Product description

standard Swivel transport castor with brake with an overall height of 232 mm

Wheel diameter x width: 200 x 50 mm

Top plate with 4 mounting holes of 12,5 mm, mounting hole distance #\$\$ mm and top plate outer dimensions: 93 mm

Wheel with plain bearing and black rubber tyre with hardness 80 ° Shore A on steel rim with electrogalvanization zinc plating anti-corrosion protection Cr6-free the double brake system, brakes the turning of the wheel and the swivel rotation.

Approved and tested load capacity

Dynamic 230 kg

Static 280 kg

Temperature range:

Continious operation: -20 | +70°C

Short (10 min) exposure: -30 | +80°C

Advantages of this Comfortable drive Swivel transport castor with brake:

- ✓ to manoeuvre
- ✓ performance on uneven floor or obstacles
- ✓ and strong wheel systems

LIV SYSTEMS standard Swivel transport castor with brake + black rubber tyre Ø200 x W50mm for 230kg Prod ID: 34115

ID 34115: Castor overall height 232 mm | 4 mounting holes with distance #\$\$ mm | Wheel with plain bearing and black rubber tyre with hardness 80 ° Shore A | The double brake system, brakes the turning of the wheel and the swivel rotation. | Comfortable dr

Product information

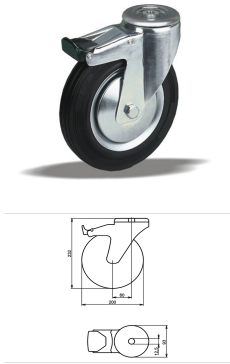
- Article code 2-598 L12
- SKU 34115
- EAN 3838461341151

Specifications

The result of our quality is maximum performance!

[Close](#)

[Close](#)



Product description

standard Swivel transport castor with brake with an overall height of 232 mm

Wheel diameter x width: 200 x 50 mm

Top plate with 4 mounting holes of 12,5 mm, mounting hole distance #\$\$ mm and top plate outer dimensions: 93 mm

Wheel with roller bearing and black rubber tyre with hardness 80 ° Shore A on steel rim with electrogalvanization zinc plating anti-corrosion protection Cr6-free the double brake system, brakes the turning of the wheel and the swivel rotation.

Approved and tested load capacity

Dynamic 230 kg

Static 280 kg

Temperature range:

Continious operation: -20 | +70°C

Short (10 min) exposure: -30 | +80°C

Advantages of this Comfortable drive Swivel transport castor with brake:

- ✓ to manoeuvre
- ✓ performance on uneven floor or obstacles
- ✓ and strong wheel systems

LIV SYSTEMS standard Swivel transport castor with brake + black rubber tyre Ø200 x W50mm for 230kg Prod ID: 34114

ID 34114: Castor overall height 232 mm | 4 mounting holes with distance #\$\$ mm | Wheel with roller bearing and black rubber tyre with hardness 80 ° Shore A | The double brake system, brakes the turning of the wheel and the swivel rotation. | Comfortable d

Product information

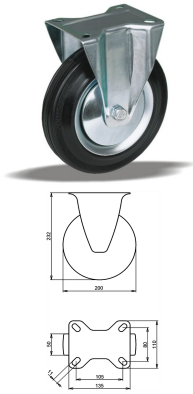
- Article code 2-610 L12
- SKU 34114
- EAN 3838461341144

Specifications

The result of our quality is maximum performance!

[Close](#)

[Close](#)



Product description

standard fixed transport castor with an overall height of 232 mm

Wheel diameter x width: 200 x 50 mm

Top plate with 4 mounting holes of 11 mm, mounting hole distance 105x80 mm and top plate outer dimensions: 135x110 mm

Wheel with plain bearing and black rubber tyre with hardness 80 ° Shore A on steel rim with electrogalvanization zinc plating anti-corrosion protection Cr6-free.

Approved and tested load capacity

Dynamic 230 kg

Static 280 kg

Temperature range:

Continuous operation: -20 | +70°C

Short (10 min) exposure: -30 | +80°C

Advantages of this Comfortable drive fixed transport castor:

- ✓ to manoeuvre
- ✓ performance on uneven floor or obstacles
- ✓ and strong wheel systems

LIV SYSTEMS standard fixed transport castor + black rubber tyre Ø200 x W50mm for 230kg Prod ID: 62403

ID 62403: Castor overall height 232 mm | 4 mounting holes with distance 105x80 mm | Wheel with plain bearing and black rubber tyre with hardness 80 ° Shore A | Comfortable drive, easy to manoeuvre, good performance on uneven floor or obstacles, robust and

Product information

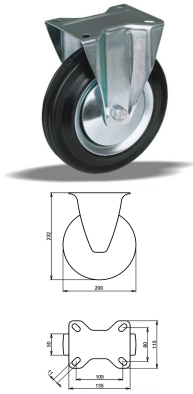
- Article code 2-241 ISO
- SKU 62403
- EAN 3838461624032

Specifications

The result of our quality is maximum performance!

[Close](#)

[Close](#)



Product description

standard fixed transport castor with an overall height of 232 mm

Wheel diameter x width: 200 x 50 mm

Top plate with 4 mounting holes of 11 mm, mounting hole distance 105x80 mm and top plate outer dimensions: 135x110 mm

Wheel with roller bearing and black rubber tyre with hardness 80 ° Shore A on steel rim with electrogalvanization zinc plating anti-corrosion protection Cr6-free.

Approved and tested load capacity

Dynamic 230 kg

Static 280 kg

Temperature range:

Continuous operation: -20 | +70°C

Short (10 min) exposure: -30 | +80°C

Advantages of this Comfortable drive fixed transport castor:

- ✓ to manoeuvre
- ✓ performance on uneven floor or obstacles
- ✓ and strong wheel systems

LIV SYSTEMS standard fixed transport castor + black rubber tyre Ø200 x W50mm for 230kg Prod ID: 55369

ID 55369: Castor overall height 232 mm | 4 mounting holes with distance 105x80 mm | Wheel with roller bearing and black rubber tyre with hardness 80 ° Shore A | Comfortable drive, easy to manoeuvre, good performance on uneven floor or obstacles, robust an

Product information

- Article code 2-243 ISO
- SKU 55369
- EAN 3838461553691

Specifications

The result of our quality is maximum performance!

[Close](#)

[Close](#)



Product description

standard Swivel castor with an overall height of 232 mm

Wheel diameter x width: 200 x 50 mm

Top plate with 4 mounting holes of #5 mm, mounting hole distance #50 mm and top plate outer dimensions: 93 mm

Wheel with plain bearing and grey rubber tyre with hardness 83 ° Shore A on polypropylene.

Approved and tested load capacity

Dynamic 230 kg

Static 280 kg

Temperature range:

Continuous operation: -20 | +70°C

Short (10 min) exposure: -30 | +80°C

Advantages of this Elegant trip Swivel castor:

- ✓ rubber is non-marking and leaves no marks on the floor
- ✓ reduces the transmission of both vibration and noise
- ✓ and outdoor use

LIV SYSTEMS standard Swivel castor + grey rubber tyre Ø200 x W50mm for 230kg Prod ID: 39495

ID 39495: Castor overall height 232 mm | 4 mounting holes with distance #5 mm | Wheel with plain bearing and grey rubber tyre with hardness 83 ° Shore A | Elegant trip, Grey rubber is non-marking and leaves no marks on the floor, rubber reduces the trans

Product information

- Article code 2-978 ISO
- SKU 39495
- EAN 3838461394959

Алматы (7273)495-231
Ангарск (3955)60-70-56
Архангельск (8182)63-90-72
Астрахань (8512)99-46-04
Барнаул (3852)73-04-60
Белгород (4722)40-23-64
Благовещенск (4162)22-76-07
Брянск (4832)59-03-52
Владивосток (423)249-28-31
Владикавказ (8672)28-90-48
Владимир (4922)49-43-18
Волгоград (844)278-03-48
Вологда (8172)26-41-59
Воронеж (473)204-51-73
Екатеринбург (343)384-55-89

Иваново (4932)77-34-06
Ижевск (3412)26-03-58
Иркутск (395)279-98-46
Казань (843)206-01-48
Калининград (4012)72-03-81
Калуга (4842)92-23-67
Кемерово (3842)65-04-62
Киров (8332)68-02-04
Коломна (4966)23-41-49
Кострома (4942)77-07-48
Краснодар (861)203-40-90
Красноярск (391)204-63-61
Курск (4712)77-13-04
Курган (3522)50-90-47
Липецк (4742)52-20-81

Магнитогорск (3519)55-03-13
Москва (495)268-04-70
Мурманск (8152)59-64-93
Набережные Челны (8552)20-53-41
Нижний Новгород (831)429-08-12
Новокузнецк (3843)20-46-81
Ноябрьск (3496)41-32-12
Новосибирск (383)227-86-73
Омск (3812)21-46-40
Орел (4862)44-53-42
Оренбург (3532)37-68-04
Пенза (8412)22-31-16
Петрозаводск (8142)55-98-37
Псков (8112)59-10-37
Пермь (342)205-81-47

Ростов-на-Дону (863)308-18-15
Рязань (4912)46-61-64
Самара (846)206-03-16
Санкт-Петербург (812)309-46-40
Саратов (845)249-38-78
Севастополь (8692)22-31-93
Саранск (8342)22-96-24
Симферополь (3652)67-13-56
Смоленск (4812)29-41-54
Сочи (862)225-72-31
Ставрополь (8652)20-65-13
Сургут (3462)77-98-35
Сыктывкар (8212)25-95-17
Тамбов (4752)50-40-97
Тверь (4822)63-31-35

Тольятти (8482)63-91-07
Томск (3822)98-41-53
Тула (4872)33-79-87
Тюмень (3452)66-21-18
Ульяновск (8422)24-23-59
Улан-Удэ (3012)59-97-51
Уфа (347)229-48-12
Хабаровск (4212)92-98-04
Чебоксары (8352)28-53-07
Челябинск (351)202-03-61
Череповец (8202)49-02-64
Чита (3022)38-34-83
Якутск (4112)23-90-97
Ярославль (4852)69-52-93

Россия +7(495)268-04-70

Казахстан +7(7172)727-132

Киргизия +996(312)96-26-47

<https://liv.nt-rt.ru/> || vis@nt-rt.ru