

Алматы (7273)495-231
Ангарск (3955)60-70-56
Архангельск (8182)63-90-72
Астрахань (8512)99-46-04
Барнаул (3852)73-04-60
Белгород (4722)40-23-64
Благовещенск (4162)22-76-07
Брянск (4832)59-03-52
Владивосток (423)249-28-31
Владикавказ (8672)28-90-48
Владимир (4922)49-43-18
Волгоград (844)278-03-48
Вологда (8172)26-41-59
Воронеж (473)204-51-73
Екатеринбург (343)384-55-89

Иваново (4932)77-34-06
Ижевск (3412)26-03-58
Иркутск (395)279-98-46
Казань (843)206-01-48
Калининград (4012)72-03-81
Калуга (4842)92-23-67
Кемерово (3842)65-04-62
Киров (8332)68-02-04
Коломна (4966)23-41-49
Кострома (4942)77-07-48
Краснодар (861)203-40-90
Красноярск (391)204-63-61
Курск (4712)77-13-04
Курган (3522)50-90-47
Липецк (4742)52-20-81

Магнитогорск (3519)55-03-13
Москва (495)268-04-70
Мурманск (8152)59-64-93
Набережные Челны (8552)20-53-41
Нижний Новгород (831)429-08-12
Новокузнецк (3843)20-46-81
Ноябрьск (3496)41-32-12
Новосибирск (383)227-86-73
Омск (3812)21-46-40
Орел (4862)44-53-42
Оренбург (3532)37-68-04
Пенза (8412)22-31-16
Петрозаводск (8142)55-98-37
Псков (8112)59-10-37
Пермь (342)205-81-47

Ростов-на-Дону (863)308-18-15
Рязань (4912)46-61-64
Самара (846)206-03-16
Санкт-Петербург (812)309-46-40
Саратов (845)249-38-78
Севастополь (8692)22-31-93
Саранск (8342)22-96-24
Симферополь (3652)67-13-56
Смоленск (4812)29-41-54
Сочи (862)225-72-31
Ставрополь (8652)20-65-13
Сургут (3462)77-98-35
Сыктывкар (8212)25-95-17
Тамбов (4752)50-40-97
Тверь (4822)63-31-35

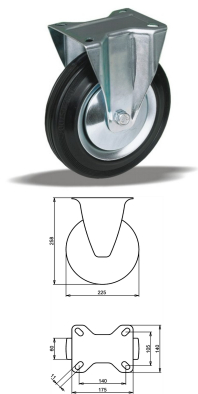
Тольятти (8482)63-91-07
Томск (3822)98-41-53
Тула (4872)33-79-87
Тюмень (3452)66-21-18
Ульяновск (8422)24-23-59
Улан-Удэ (3012)59-97-51
Уфа (347)229-48-12
Хабаровск (4212)92-98-04
Чебоксары (8352)28-53-07
Челябинск (351)202-03-61
Череповец (8202)49-02-64
Чита (3022)38-34-83
Якутск (4112)23-90-97
Ярославль (4852)69-52-93

Россия +7(495)268-04-70

Казахстан +7(7172)727-132

Киргизия +996(312)96-26-47

<https://liv.nt-rt.ru/> || vis@nt-rt.ru



Product description

standard fixed transport castor with an overall height of 258 mm

Wheel diameter x width: 225 x 60 mm

Top plate with 4 mounting holes of 11 mm, mounting hole distance 140x105 mm and top plate outer dimensions: 175x140 mm

Wheel with roller bearing and black rubber tyre with hardness 80 ° Shore A on steel rim with electrogalvanization zinc plating anti-corrosion protection Cr6-free.

Approved and tested load capacity

Dynamic 250 kg

Static 310 kg

Temperature range:

Continuous operation: -20 | +70°C

Short (10 min) exposure: -30 | +80°C

Advantages of this Comfortable drive fixed transport castor:

- ✓ to manoeuvre
- ✓ performance on uneven floor or obstacles
- ✓ and strong wheel systems

LIV SYSTEMS standard fixed transport castor + black rubber tyre Ø225 x W60mm for 250kg Prod ID: 55375

ID 55375: Castor overall height 258 mm | 4 mounting holes with distance 140x105 mm | Wheel with roller bearing and black rubber tyre with hardness 80 ° Shore A | Comfortable drive, easy to manoeuvre, good performance on uneven floor or obstacles, robust a

Product information

- Article code 2-320 ISO
- SKU 55375
- EAN 3838461553752

Specifications

The result of our quality is maximum performance!

[Close](#)

[Close](#)



Product description

standard Wheel with roller bearing and black rubber tyre with hardness 80 ° Shore A on steel rim with electrogalvanization zinc plating anti-corrosion protection Cr6-free

Wheel diameter x width: 225 x 60 mm

Axle hole: 20 mm

Hub length: 39 mm

Approved and tested load capacity

Dynamic 250 kg

Static 310 kg

Temperature range:

Continuous operation: -20 | +70°C

Short (10 min) exposure: -30 | +80°C

Advantages of this Comfortable drive wheel:

- ✓ to manoeuvre
- ✓ performance on uneven floor or obstacles
- ✓ and strong wheel systems

LIV SYSTEMS standard transport wheel + black rubber tyre Ø225 x W60mm for 250kg Prod ID: 25637

ID 25637: standard Wheel with roller bearing and black rubber tyre with hardness 80 ° Shore A on steel rim with electrogalvanization zinc plating anti-corrosion protection Cr6-free | Axle hole: 20 mm | Hub length: 39 mm |

Comfortable drive, easy to manoeuvre

Product information

- Article code 2-173
- SKU 25637
- EAN 3838461256370



Product description

standard Wheel with plain bearing and black rubber tyre with hardness 80 ° Shore A on steel rim with electrogalvanization zinc plating anti-corrosion protection Cr6-free

Wheel diameter x width: 225 x 60 mm

Axle hole: 20 mm

Hub length: 64 mm

Approved and tested load capacity

Dynamic 250 kg

Static 310 kg

Temperature range:

Continuous operation: -20 | +70°C

Short (10 min) exposure: -30 | +80°C

Advantages of this Comfortable drive wheel:

- ✓ to manoeuvre
- ✓ performance on uneven floor or obstacles
- ✓ and strong wheel systems

LIV SYSTEMS standard transport wheel + black rubber tyre Ø225 x W60mm for 250kg Prod ID: 22997

ID 22997: standard Wheel with plain bearing and black rubber tyre with hardness 80 ° Shore A on steel rim with electrogalvanization zinc plating anti-corrosion protection Cr6-free | Axle hole: 20 mm | Hub length: 64 mm |

Comfortable drive, easy to manoeuvre

Product information

- Article code 2-179
- SKU 22997
- EAN 3838461229978



Product description

standard Wheel with ball bearing and black rubber tyre with hardness 80 ° Shore A on steel rim with electrogalvanization zinc plating anti-corrosion protection Cr6-free

Wheel diameter x width: 225 x 60 mm

Axle hole: 17 mm

Hub length: 35 mm

Approved and tested load capacity

Dynamic 250 kg

Static 310 kg

Temperature range:

Continious operation: -20 | +70°C

Short (10 min) exposure: -30 | +80°C

Advantages of this Comfortable drive wheel:

- ✓ to manoeuvre
- ✓ performance on uneven floor or obstacles
- ✓ and strong wheel systems

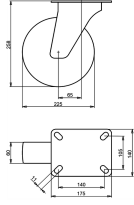
LIV SYSTEMS standard transport wheel + black rubber tyre Ø225 x W60mm for 250kg Prod ID: 22911

ID 22911: standard Wheel with ball bearing and black rubber tyre with hardness 80 ° Shore A on steel rim with electrogalvanization zinc plating anti-corrosion protection Cr6-free | Axle hole: 17 mm | Hub length: 35 mm |

Comfortable drive, easy to manoeuvre

Product information

- Article code 2-107
- SKU 22911
- EAN 3838461229114



Product description

standard Swivel transport castor with an overall height of 258 mm

Wheel diameter x width: 225 x 60 mm

Top plate with 4 mounting holes of 11 mm, mounting hole distance 140x105 mm and top plate outer dimensions: 175x140 mm

Wheel with plain bearing and black rubber tyre with hardness 80 ° Shore A on steel rim with electrogalvanization zinc plating anti-corrosion protection Cr6-free.

Approved and tested load capacity

Dynamic 250 kg

Static 310 kg

Temperature range:

Continuous operation: -20 | +70°C

Short (10 min) exposure: -30 | +80°C

Advantages of this Comfortable drive Swivel transport castor:

- ✓ to manoeuvre
- ✓ performance on uneven floor or obstacles
- ✓ and strong wheel systems

LIV SYSTEMS standard Swivel transport castor + black rubber tyre Ø225 x W60mm for 250kg Prod ID: 91409

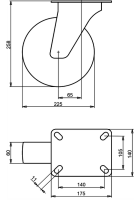
ID 91409: Castor overall height 258 mm | 4 mounting holes with distance 140x105 mm | Wheel with plain bearing and black rubber tyre with hardness 80 ° Shore A | Comfortable drive, easy to manoeuvre, good performance on uneven floor or obstacles, robust an

Product information

- Article code 2-313 ISO
- SKU 91409
- EAN 3838461914096

Specifications

The result of our quality is maximum performance!



Product description

standard Swivel transport castor with an overall height of 258 mm

Wheel diameter x width: 225 x 60 mm

Top plate with 4 mounting holes of 11 mm, mounting hole distance 140x105 mm and top plate outer dimensions: 175x140 mm

Wheel with roller bearing and black rubber tyre with hardness 80 ° Shore A on steel rim with electrogalvanization zinc plating anti-corrosion protection Cr6-free.

Approved and tested load capacity

Dynamic 250 kg

Static 310 kg

Temperature range:

Continuous operation: -20 | +70°C

Short (10 min) exposure: -30 | +80°C

Advantages of this Comfortable drive Swivel transport castor:

- ✓ to manoeuvre
- ✓ performance on uneven floor or obstacles
- ✓ and strong wheel systems

LIV SYSTEMS standard Swivel transport castor + black rubber tyre Ø225 x W60mm for 250kg Prod ID: 55393

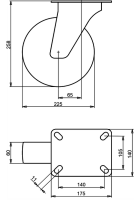
ID 55393: Castor overall height 258 mm | 4 mounting holes with distance 140x105 mm | Wheel with roller bearing and black rubber tyre with hardness 80 ° Shore A | Comfortable drive, easy to manoeuvre, good performance on uneven floor or obstacles, robust a

Product information

- Article code 2-311 ISO
- SKU 55393
- EAN 3838461553936

Specifications

The result of our quality is maximum performance!



Product description

standard Swivel transport castor with an overall height of 258 mm

Wheel diameter x width: 225 x 60 mm

Top plate with 4 mounting holes of 11 mm, mounting hole distance 140x105 mm and top plate outer dimensions: 175x140 mm

Wheel with ball bearing and black rubber tyre with hardness 80 ° Shore A on steel rim with electrogalvanization zinc plating anti-corrosion protection Cr6-free.

Approved and tested load capacity

Dynamic 250 kg

Static 310 kg

Temperature range:

Continuous operation: -20 | +70°C

Short (10 min) exposure: -30 | +80°C

Advantages of this Comfortable drive Swivel transport castor:

- ✓ to manoeuvre
- ✓ performance on uneven floor or obstacles
- ✓ and strong wheel systems

LIV SYSTEMS standard Swivel transport castor + black rubber tyre Ø225 x W60mm for 250kg Prod ID: 56499

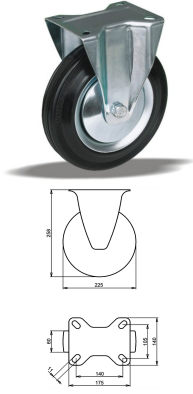
ID 56499: Castor overall height 258 mm | 4 mounting holes with distance 140x105 mm | Wheel with ball bearing and black rubber tyre with hardness 80 ° Shore A | Comfortable drive, easy to manoeuvre, good performance on uneven floor or obstacles, robust and

Product information

- Article code 2-167 ISO
- SKU 56499
- EAN 3838461564994

Specifications

The result of our quality is maximum performance!



Product description

standard fixed transport castor with an overall height of 258 mm

Wheel diameter x width: 225 x 60 mm

Top plate with 4 mounting holes of 11 mm, mounting hole distance 140x105 mm and top plate outer dimensions: 175x140 mm

Wheel with plain bearing and black rubber tyre with hardness 80 ° Shore A on steel rim with electrogalvanization zinc plating anti-corrosion protection Cr6-free.

Approved and tested load capacity

Dynamic 250 kg

Static 310 kg

Temperature range:

Continuous operation: -20 | +70°C

Short (10 min) exposure: -30 | +80°C

Advantages of this Comfortable drive fixed transport castor:

- ✓ to manoeuvre
- ✓ performance on uneven floor or obstacles
- ✓ and strong wheel systems

LIV SYSTEMS standard fixed transport castor + black rubber tyre Ø225 x W60mm for 250kg Prod ID: 22793

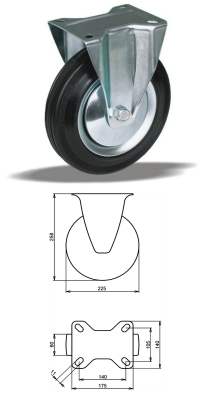
ID 22793: Castor overall height 258 mm | 4 mounting holes with distance 140x105 mm | Wheel with plain bearing and black rubber tyre with hardness 80 ° Shore A | Comfortable drive, easy to manoeuvre, good performance on uneven floor or obstacles, robust an

Product information

- Article code 2-312 ISO
- SKU 22793
- EAN 3838461227936

Specifications

The result of our quality is maximum performance!



Product description

standard fixed transport castor with an overall height of 258 mm

Wheel diameter x width: 225 x 60 mm

Top plate with 4 mounting holes of 11 mm, mounting hole distance 140x105 mm and top plate outer dimensions: 175x140 mm

Wheel with ball bearing and black rubber tyre with hardness 80 ° Shore A on steel rim with electrogalvanization zinc plating anti-corrosion protection Cr6-free.

Approved and tested load capacity

Dynamic 250 kg

Static 310 kg

Temperature range:

Continuous operation: -20 | +70°C

Short (10 min) exposure: -30 | +80°C

Advantages of this Comfortable drive fixed transport castor:

- ✓ to manoeuvre
- ✓ performance on uneven floor or obstacles
- ✓ and strong wheel systems

LIV SYSTEMS standard fixed transport castor + black rubber tyre Ø225 x W60mm for 250kg Prod ID: 56500

ID 56500: Castor overall height 258 mm | 4 mounting holes with distance 140x105 mm | Wheel with ball bearing and black rubber tyre with hardness 80 ° Shore A | Comfortable drive, easy to manoeuvre, good performance on uneven floor or obstacles, robust and

Product information

- Article code 2-137 ISO
- SKU 56500
- EAN 3838461565007

Specifications

The result of our quality is maximum performance!

Алматы (7273)495-231
Ангарск (3955)60-70-56
Архангельск (8182)63-90-72
Астрахань (8512)99-46-04
Барнаул (3852)73-04-60
Белгород (4722)40-23-64
Благовещенск (4162)22-76-07
Брянск (4832)59-03-52
Владивосток (423)249-28-31
Владикавказ (8672)28-90-48
Владимир (4922)49-43-18
Волгоград (844)278-03-48
Вологда (8172)26-41-59
Воронеж (473)204-51-73
Екатеринбург (343)384-55-89

Иваново (4932)77-34-06
Ижевск (3412)26-03-58
Иркутск (395)279-98-46
Казань (843)206-01-48
Калининград (4012)72-03-81
Калуга (4842)92-23-67
Кемерово (3842)65-04-62
Киров (8332)68-02-04
Коломна (4966)23-41-49
Кострома (4942)77-07-48
Краснодар (861)203-40-90
Красноярск (391)204-63-61
Курск (4712)77-13-04
Курган (3522)50-90-47
Липецк (4742)52-20-81

Магнитогорск (3519)55-03-13
Москва (495)268-04-70
Мурманск (8152)59-64-93
Набережные Челны (8552)20-53-41
Нижний Новгород (831)429-08-12
Новокузнецк (3843)20-46-81
Ноябрьск (3496)41-32-12
Новосибирск (383)227-86-73
Омск (3812)21-46-40
Орел (4862)44-53-42
Оренбург (3532)37-68-04
Пенза (8412)22-31-16
Петрозаводск (8142)55-98-37
Псков (8112)59-10-37
Пермь (342)205-81-47

Ростов-на-Дону (863)308-18-15
Рязань (4912)46-61-64
Самара (846)206-03-16
Санкт-Петербург (812)309-46-40
Саратов (845)249-38-78
Севастополь (8692)22-31-93
Саранск (8342)22-96-24
Симферополь (3652)67-13-56
Смоленск (4812)29-41-54
Сочи (862)225-72-31
Ставрополь (8652)20-65-13
Сургут (3462)77-98-35
Сыктывкар (8212)25-95-17
Тамбов (4752)50-40-97
Тверь (4822)63-31-35

Тольятти (8482)63-91-07
Томск (3822)98-41-53
Тула (4872)33-79-87
Тюмень (3452)66-21-18
Ульяновск (8422)24-23-59
Улан-Удэ (3012)59-97-51
Уфа (347)229-48-12
Хабаровск (4212)92-98-04
Чебоксары (8352)28-53-07
Челябинск (351)202-03-61
Череповец (8202)49-02-64
Чита (3022)38-34-83
Якутск (4112)23-90-97
Ярославль (4852)69-52-93

Россия +7(495)268-04-70

Казахстан +7(7172)727-132

Киргизия +996(312)96-26-47

<https://liv.nt-rt.ru/> || vis@nt-rt.ru